

The New York Times... In Your Pocket: A cheeky, well-written series of guidesbooks.



Map Hotels Restaurants Bars Sights

ŠIAULIAI

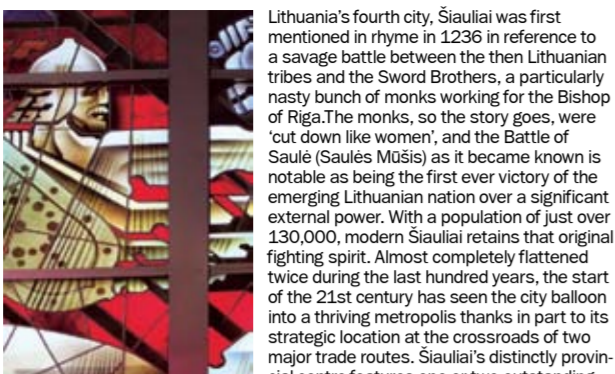
Aistros masazai - erotic, exotic massages. 10% discount with flyer.

In Šiauliai: "AKROPOLIS", "BRUKLINAS". Contact info and hours.

escapē NIGHT STRIP CLUB. 22:00 - 06:00. SAUNA / JACUZZI.

VIP INVITATION. FREE ENTRANCE. FREE DRINK. FREE TABLE DANCE.

INTRODUCING ŠIAULIAI



Lithuania's fourth city, Šiauliai was first mentioned in rhyme in 1236 in reference to a savage battle between the then Lithuanian tribes and the Sword Brothers...

STREET REGISTER

Table with 6 columns listing street names and their directions (e.g., Mickėvėičiaus, Kanapki, Agnasti).

ARRIVING & GETTING AROUND

Tourist information

Tourist Information Centre (Turizmo Informacijos Centras) C-5, Vilnius 213, tel. (+370) 415 231 10...

Located a little northwest of the centre of the country, Šiauliai is agreeably situated for getting there by all forms of transport with the exception of by air.

Arriving in Šiauliai

With two major roads converging on Šiauliai and a convenient if not particularly busy rail route running through the city, arriving is as easy as falling off the proverbial log.

By bus

Regular bus services connect Šiauliai with all major Lithuanian towns and cities. The bus station is right in the centre, meaning it's possible to walk to many of the hotels listed in this guide.

Bus Station C-5/6, Tilžės 109, tel. (+370) 415 250 58, www.busturas.lt.

By car

Šiauliai is at the junction of the main A11 (E272) and A12 (E77) highways, connecting the city directly with several cities including Vilnius, Klaipėda and Riga.

Local bus schedule

Table with 5 columns: Kaunas, Vilnius, Klaipėda, Šiauliai, and other routes with times.

ARRIVING & GETTING AROUND

International bus schedule

Table with 5 columns: Dep., Arr., City, Dep., Arr. for international routes to Riga, Vilnius, Tallinn.

Correct at the time of going to press (October 20, 2009) and subject to change during the lifetime of this mini guide.

By train

Reach Šiauliai directly by train from Vilnius (three daily), Klaipėda (five daily) and several stations in between.

Train Station C-6, Dubljos 44, tel. (+370) 412 034 45/ (+370) 412 034 77, www.litra.lt.

Public transport

Šiauliai is served by an excellent if somewhat dilapidated system of city-run buses. Should you need one, buy a ticket from the driver for 1.60Lt or get one beforehand from a kiosk for just 1.40Lt.

Bus Station C-5/6, Tilžės 109, tel. (+370) 415 250 58, www.busturas.lt.

Trains

Javėna Tel. 1458/(+370) 415 222 22 (11t/km*) Takai Tel. 1400/(+370) 415 015 50 (11t/km*)

Train schedule

Table with 5 columns: Dep., Arr., City, Dep., Arr. for train routes.

Correct at the time of going to press (October 20, 2009) and subject to change during the lifetime of this mini guide.

BASICS

Basic data

Population Lithuania 3,354,500 Šiauliai 126,215 Territory 65,302 square kilometres.

Crime & Safety

Crime is rampant in Lithuania, a great deal of it taking place inside the clandestine world of politics and consequently having little if no effect on the average visitor.

Electricity

Lovely Lithuanian domestic electricity flows out the walls at 220V, AC 50Hz, and nearly all sockets are of the round two-pin European variety.

Floors

The Lithuanians use the same system as the Americans, considering the floor at street level to be the first floor and so on.

Language

Lithuanian is a very odd language indeed. One of the oldest still spoken today, the tongue that time forgot is supposedly similar in grammatical form as well as sharing many of the same words with, of all things, Sanskrit.

Money

The unit of currency in Lithuania is the litas (Lt), which comes in denominations of 10Lt, 20Lt, 50Lt, 100Lt, 200Lt and 500Lt notes, 1, 2 and 5 litas coins and a number of weightless, worthless and perfectly useless cent/litas coins.

CULTURE

For such a small metropolis, Šiauliai packs in a lot of culture. Boasting a serious theatre, concert hall, cultural centre, a large, multi-purpose stadium and a couple of decent cinemas, the city's substantial contribution to art of many persuasions goes without question.

Cinemas

Foreign films are generally shown in their original language with Lithuanian subtitles.

Atlantis Cinemas E-3, Tilžės 225, tel. (+370) 414 229 23, www.siauliculture.lt. Forum Cinemas Šiauliai Aldo 8 (Akropolis), tel. 1567, www.forumcinemas.lt.

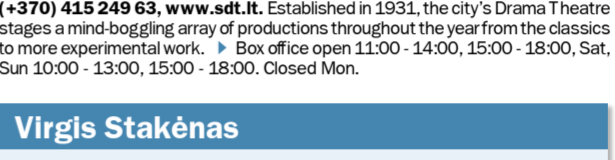
Concert halls

Šiauliai Cultural Centre (Šiaulių Kultūros Centras) C-5, Aušros 31, tel. (+370) 415 241 63. Home to the city's contribution to traditional Lithuanian culture, this crumbling masterpiece hosts regular concerts of folk music as well as providing a base for a plethora of folk-related organisations from singing groups to dance ensembles.

Theatres

Šiauliai Drama Theatre (Šiaulių Dramos Teatras) C-5, Tilžės 155, tel. (+370) 415 249 63, www.sd.lt.

Virgis Stakėnas



During the darkest days of the Cold War way back in the early 1970s, a group of like-minded Lithuanian students would gather together and forget about their academic woes by playing, listening to and talking about music.

anian folk music and finding inspiration in a wide range of individuals including Bob Dylan, the Soviet-era Russian underground figure Artiom Troitsky and the Icelandic dance Björk.



Where next?

With Druskininkai and Šiauliai now Pocketed, we're looking to find the next Lithuanian destinations ready for their own miniguides.

In Your Pocket guides and mini-guides are published in 50 cities across the continent. You can download PDF versions of them all for free at inyourpocket.com.

In Your Pocket Europe's City Guide inyourpocket.com

inyou pocket ESSENTIAL CITY GUIDES. Editorial: Rūta Rėšaitė, Saulina Kochanskaitė. Editor: Scaja

Aistros masazai - erotic, exotic massages. 10% discount with flyer. In Šiauliai: "AKROPOLIS", "BRUKLINAS". escapē NIGHT STRIP CLUB. 22:00 - 06:00. SAUNA / JACUZZI. 10:00 - 06:00.



WHERE TO STAY

Symbol key

Table with 2 columns listing amenities like Air conditioning, Smoking rooms, Child-friendly, etc.

From eclectic four-star luxury to a night in a dormitory with a shared toilet, Šiauliai claims just about every kind of accommodation option with the exception of a hotel chain you've ever heard of.

Upmarket

Medžiotojų Uželgia B-5, Dubljos 20, tel. (+370) 415 245 26, fax (+370) 415 245 25, info@medziotojuuzelgia.lt, www.medziotojuuzelgia.lt.

Saulys C-5, Vasario 16-osios 40, tel. (+370) 415 208 12, fax (+370) 415 209 11, info@saulys.lt, www.saulys.lt.

Šiauliai D-5/6, Draugystės 25, tel. (+370) 414 373 33, fax (+370) 414 383 39, info@hotelšiauliai.lt, www.hotelšiauliai.lt.

Tomas A-7, Tilžės 63a, tel. (+370) 414 151 50, fax (+370) 414 555 41, info@hoteltomas.lt, www.hoteltomas.lt.

WHERE TO STAY



Dubijos g. 20, LT-77207, Šiauliai. Tel. (+370) 411 52 45 26, fax (+370 411) 52 45 25, www.medziotojuuzelgia.lt

Saldūvė C-7, Donelaičio 70, tel. (+370) 415 535 93/ (+370) 415 535 90, fax (+370) 415 535 90, sالدuve@gmail.com.

Mid-range

Saulininkas C-4, Lukauskio 5a, tel. (+370) 414 365 55/ (+370) 686 811 87, fax (+370) 414 218 48, info@saulininkas.com, www.saulininkas.com.

Hostels

Jaunimo Nakvynės Namai D-5, Tilžės 159, tel. (+370) 415 237 64, fax (+370) 415 250 94, info@jaunimostalija.lt, www.jnm-siauliuokleja.lt.

Editor's pick

Nakvynės Šiauliuose B-5, Gumbinės 34, tel. (+370) 614 466 34, info@pirciusiens.lt, www.nakvynesiauliuose.lt.

WHERE TO STAY

Turnė C-6, Rūdės 9, tel. (+370) 415 001 50, fax (+370) 414 292 38, hotel@turne.lt, www.turne.lt.

Budget

Saldūvė C-7, Donelaičio 70, tel. (+370) 415 535 93/ (+370) 415 535 90, fax (+370) 415 535 90, sالدuve@gmail.com.

Guesthouses

Mišiu Verbenų C-4, Zemaitės 89, tel./fax (+370) 412 111 17, verbenas@plius.lt, www.verbena.lt.

Hotels

Jaunimo Nakvynės Namai D-5, Tilžės 159, tel. (+370) 415 237 64, fax (+370) 415 250 94, info@jaunimostalija.lt, www.jnm-siauliuokleja.lt.

Hotels

Geltona A12 (E77), just north of the city (Beržinės Vilajė), tel. (+370) 415 115 11/ (+370) 418 168 45, fax (+370) 415 584 80, info@geltonahotel.com, www.geltonahotel.com.

Out of town

Grafiatės Svaltinė Aušros 1, Ginkūnai, tel. (+370) 415 891 20, fax (+370) 415 021 52, info@hotelgrafiate.com, www.hotelgrafiate.com.