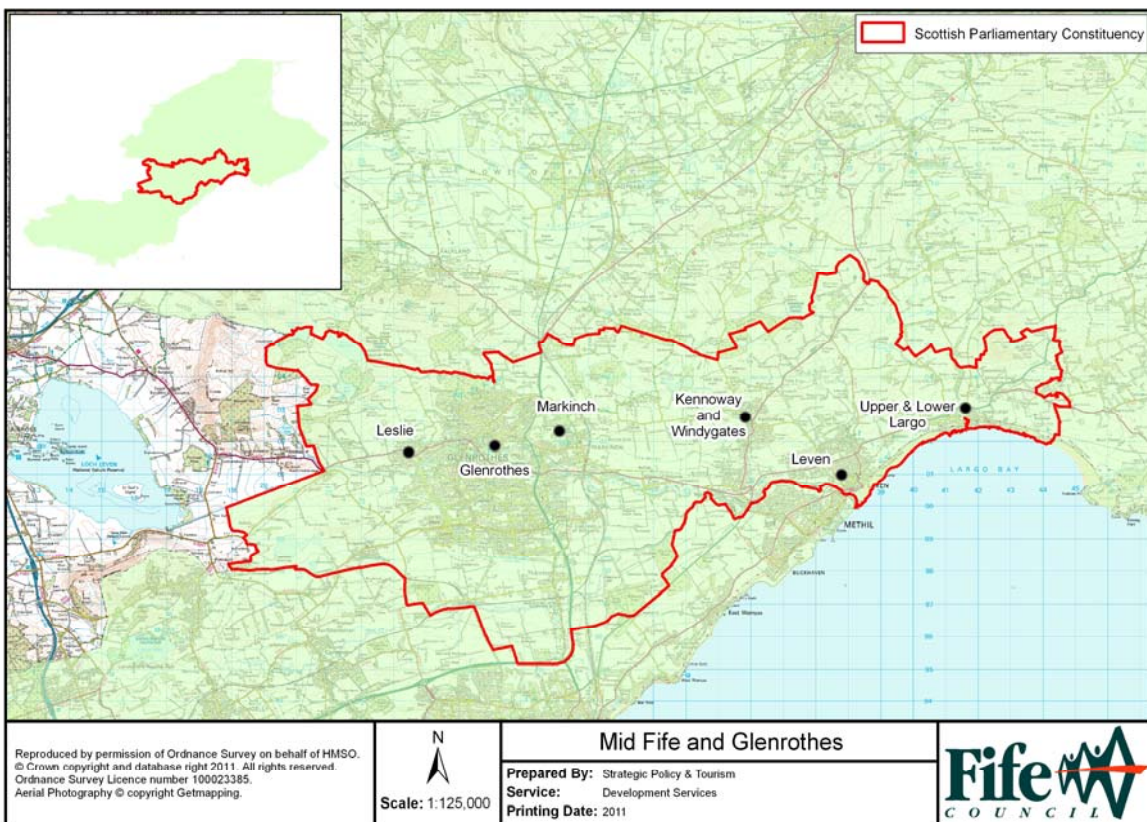


Economic Profiles

Mid Fife and Glenrothes Scottish Parliamentary Constituency

The new Scottish parliamentary constituencies come into effect on 5th May 2011.



POPULATION

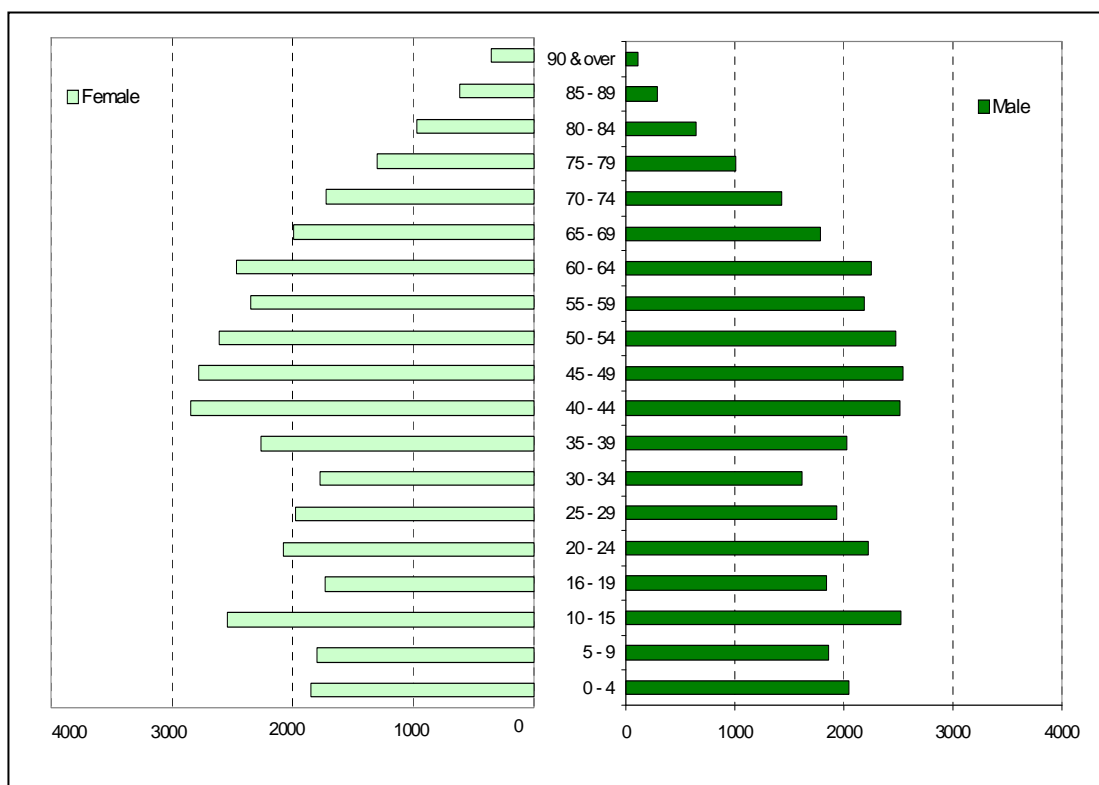
Population by Broad Age Bands, 2009

	Under 16		Working Age		64 and over		Total No
	No	%	No	%	No	%	
Mid Fife and Glenrothes	12,622	18.2	44,492	64.2	12,231	17.6	69,345
Fife	65,538	17.9	241,064	64.8	64,369	17.3	370,971
Scotland	912,340	17.6	3,413,148	65.7	868,512	16.7	5,194,000

Source: General Register Office for Scotland (GROS)

Note: Percentages refer to the percentage share of total population

Male and Female Population Split: Mid Fife and Glenrothes, 2009



Source: General Register for Scotland, 2009

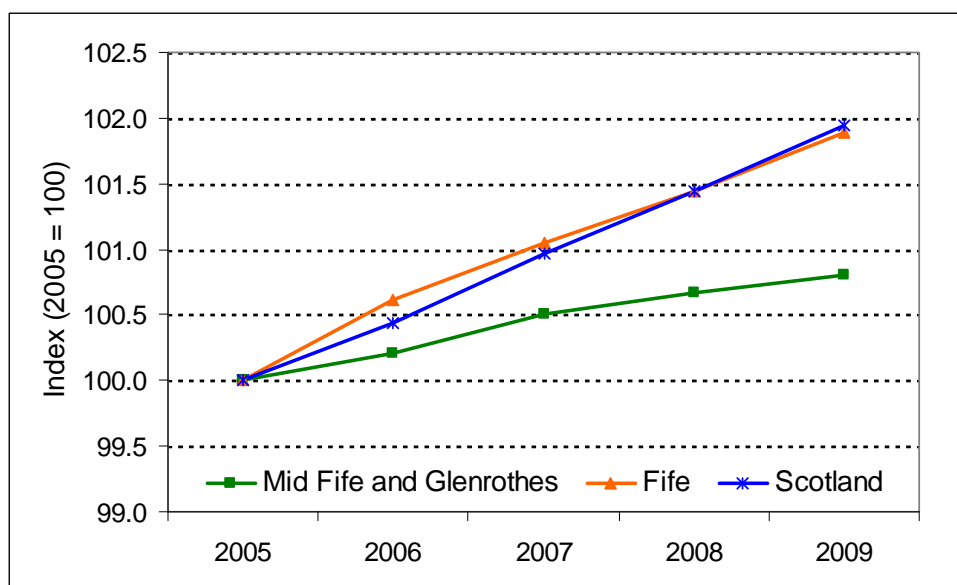
Population by Settlements, 2009

Settlement	Population
Glenrothes	36,593
Leven	8,380
Kennoway	5,531
Markinch / Star	4,147
Leslie	4,128
Lundin Links, Upper and Lower Largo	2,901
Thornton	2,257
Kinglassie	1,504
Cameron Bridge & Duniface	1,290
Coaltown of Balgonie	1,059
Windygates	1,052
Milton of Balgonie	503

Source: General Register Office for Scotland (GROS)

Please note: The figures stated in the settlement statements are derived from aggregating datazones to best fit the settlement boundaries as defined in Fife Council Local Plans. The population of the parliamentary constituency area does not necessarily represent the total population of all the settlements.

Overall Population Trends, 2005 - 2009



Source: General Registers Office for Scotland

ECONOMIC ACTIVITY

Economically active, refers to people aged 16 or over who are either in employment or unemployed. Conversely, economically inactive refers to people who are neither in employment nor unemployed. These include those who want a job but have not been seeking work in the last four weeks, those who want a job and are seeking work but are not available to start, and those who do not want a job.

Economic Activity, July 2009 – June 2010

	Economic Activity		Economic Inactivity	
	No	%	No	%
Mid Fife and Glenrothes	n/a	n/a	n/a	n/a
Fife	183,900	78.4	50,700	21.6
Scotland	2,662,728	76.9	783,940	23.1

Source: Annual Population Survey, Nomis

Note: Percentages refer to the percentage share of the total working age population.

EMPLOYMENT

Employment Rate, July 2009 – June 2010

	Employment Rate	
	No	%
Mid Fife and Glenrothes	n/a	n/a
Fife	166,600	71.1
Scotland	2,461,840	71.0

Source: Economic Briefing, Scottish Government, Analytical Services Division; Annual Population Survey

n/a –Data is not currently available for the new Scottish parliamentary constituencies as a defined geography. This data will be included at a later date.

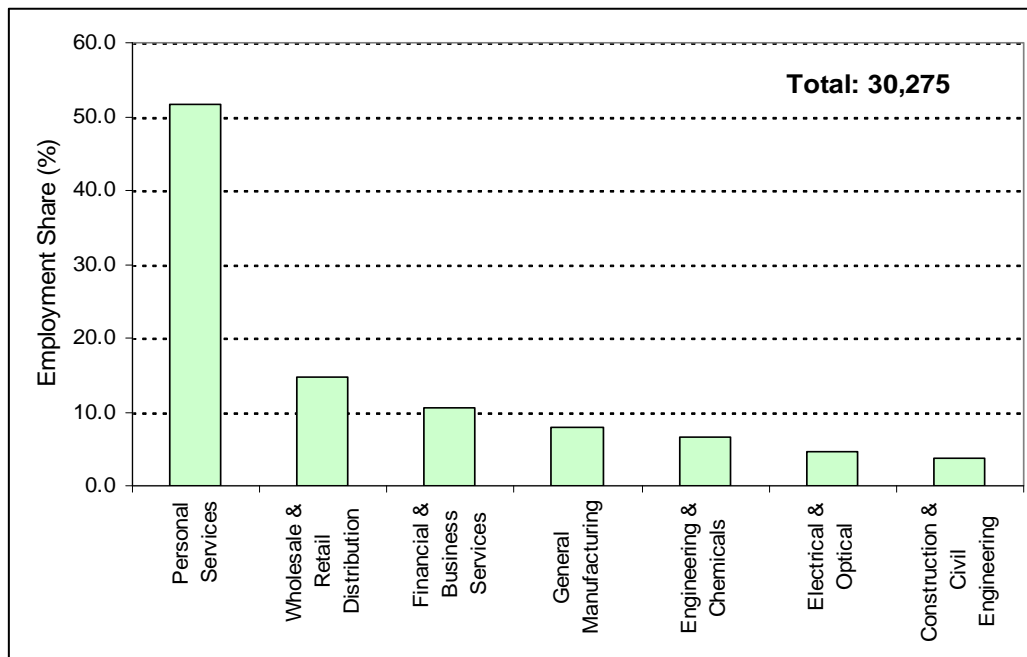
Employment Concentration by Industry (2005 - 2009)

	Number of Employees					% Change 2005 - 09
	2005	2006	2007	2008	2009	
Primary*	423	-	-	-	-	-
Manufacturing - Engineering / Chemicals	2,585	2,523	1,988	1,948	2,019	-21.9
Manufacturing - Electronics / Optical	1,580	1,406	1,480	1,564	1,425	-9.8
Manufacturing - General	2,906	3,380	2,941	2,663	2,390	-17.8
Utilities*	-	-	-	-	-	-
Construction	2,274	1,379	1,426	1,374	1,153	-49.3
Wholesale & Retail Distribution	4,243	4,294	3,901	4,356	4,459	5.1
Financial & Business Services	3,378	3,731	3,070	2,934	3,176	-6.0
Personal Services	13,055	13,949	16,550	15,136	15,653	19.9
Total Employment	30,444	30,662	31,356	29,975	30,275	-0.6

Source: Annual Business Inquiry / Business Register and Employment Survey, NOMIS

*Due to data disclosure very small numbers have been omitted and the totals reduced accordingly.

Total Employment by Industry, 2009



Source: Business Register and Employment Survey, NOMIS

EARNINGS

Gross Weekly Earnings all Employee Jobs, (£ per employee, median), 2009

	Workplace- based	Residence-based
Mid Fife and Glenrothes	n/a	n/a
Fife	345.2	377.3
Scotland	385.4	387.5

Source: Economic Briefing, Scottish Government, Analytical Services Division; Annual Survey of Hours and Earnings (ASHE)

n/a –Data is not currently available for the new Scottish parliamentary constituencies as a defined geography. This data will be included at a later date.

MAJOR EMPLOYERS

In the Mid Fife and Glenrothes Scottish parliamentary constituency, employment is provided across a range of sectors. Some of the constituency's larger employers include:

Industrial Sector	Companies
Defence Technologies	Raytheon Systems Ltd
Paper Makers	Tullis Russell
Food & Drink	Diageo Global Supply
Chemicals	Silberline Ltd
Manufacturing	Brand Rex Bosch Rexroth
Education	Adam Smith College
Timber Merchant	Donaldson Timber
Retailer (online)	Amazon
Hotels	Balbirnie House Hotel Balgeddie House Hotel

Source: Development Services, Fife Council

Note: Employment levels fluctuate as the economic climate changes. The above table is based on information in the public domain as at January 2011.

EMPLOYMENT SITES

Employment sites with the highest concentration of employment in Mid Fife and Glenrothes are shown below.

Core Employment Sites

Settlement	Employment Site
Glenrothes	Southfield Industrial Estate
Glenrothes	Pentland Park
Glenrothes	Viewfield Industrial Estate
Glenrothes	Eastfield Industrial Estate
Glenrothes	Bankhead Industrial Estate
Glenrothes	Whitehill Industrial Estate
Markinch	Haig Business Park
Leven	Banbeath Industrial Estate

Source: Development Services, Fife Council

REPORTED JOB GAINS AND LOSSES

A summary of reported job gains and losses over the last five years is shown below. The jobs are split into Production (which include agriculture and fishing, manufacturing, construction, and utilities), and Services (which cover sales, tourism, financial and other business services). The information excludes jobs gained and lost within the public and retail sectors.

	Production Industries		Service-Related	
	Gains	Losses	Gains	Losses
2010	515	174	89	55
2009	754	350	110	49
2008	134	166	99	0
2007	72	198	80	27
2006	147	300	175	133
Cumulative Total	1,622	1,188	553	264
Net Job Gains (2006 – 2010)	434		289	

Source: Derived from the Jobs and Investment Monitor, Development Services, Fife Council

Note: The above table is based on information in the public domain, from 2006 - 2010, and will not encompass all job gains and losses that have occurred.

UNEMPLOYMENT

Jobseeker's Allowance (JSA) Claimant Levels and Rates, 2006 – 2010

	Mid Fife and Glenrothes		Fife	Scotland
	Number	%	%	%
2010	2,195	4.5	4.3	4.0
2009	2,139	4.4	4.2	3.8
2008	1,322	2.7	2.8	2.4
2007	1,344	2.7	2.6	2.1
2006	1,640	3.3	3.1	2.5
Absolute Change (2006 – 2010)	555	1.2	1.2	1.5
Percentage Change (2006 -2010)	33.8			

Source: Claimant Count, NOMIS

Note: Percentages refer to the percentage share of resident working age population.

CURRENT AND FUTURE DEVELOPMENTS

Glenrothes

Town Centre Development

Proposals by the owners of the Kingdom Centre, CIS Ltd, to extend the centre have been granted planning consent by Fife Council. These include plans to build a Tesco superstore.

Action Planning Work in Glenrothes

Finalised in November 2010, Glenrothes Town Centre is the focus of a three year action plan. This will deliver a series of improvements and help to make the town centre a greater focus for activity during the day and in the evenings.

Adam Smith College

Future Skills Centre - Adam Smith College's new Future Skills Centre at the Stenton Campus in Glenrothes opened its doors to students in September 2010. The £17.5 million Centre includes new teaching laboratories and testing facilities as well as motor vehicle, engineering and construction trade workshops. The new building marks the first stage in a major redevelopment of the Glenrothes campus.

Renewable Energy Partnership - A new partnership between Adam Smith College and The Hydrogen Office was formally launched in December 2010 at the Future Skills Centre in Glenrothes. The college is a key player in developing the skills and knowledge required by existing and potential employers in the renewables and clean-energy sectors, and both organisations champion learning in the renewables and new clean energy sector. Students will benefit through wider access to equipment and technological advances in the energy sector,

and an in-depth insight into new practices being used by companies, as well as the opportunity to work on special projects with The Hydrogen Office.

Kingdom Shopping Centre

The Kingdom Shopping Centre has won a Green Apple award for reducing its carbon footprint by 45% in 5 years. The centre has also accepted an invitation to join the International Green Heroes Group.

New Sports Centre

Plans to build a new sports centre in Glenrothes have been approved by Fife Council. The Fife Institute of Physical and Recreational Education will be replaced with an upgraded centre providing a high level training and competition facility with an eight lane 25 metre competition pool and associated sports facilities.

Markinch

Tullis Russell

The papermaker was awarded more than £8 million in a Regional Selective Assistance (RSA) grant towards building a combined heat and power (CHP) plant at their site in Markinch. Construction of the plant, which will replace the existing coal-fired plant, will safeguard over 500 jobs at the site and is scheduled for completion in 2011. Through a joint venture with energy provider npower, the new biomass plant is anticipated to reduce the company's annual CO2 emissions by 250,000 tonnes, some 70% of current levels. It will also meet 6% of Scotland's renewable generation targets

Leven

Area Economic Regeneration Action Plan for Levenmouth

Work is underway to deliver an economic regeneration action plan for the Levenmouth area. The plan will set out practical steps for public, private and community partners to deliver improvements, over the short and medium term, to the physical environment, access to jobs and training and to enterprise activity that benefit the less prosperous communities. The Plan should be formally adopted in May 2011. The actions will aim to compliment existing policies and programmes such as Fife Energy Zone to maximise regeneration benefit.

Diageo

Diageo has started the work to erect a new £86 million bottling plant at Banbeath in Levenmouth, which will bring over 400 new jobs to the area. The company already employs around 400 people at the plant. The new bottling hall, which could be operational by summer

2011, will increase volumes by eight or nine million cases a year taking production to over 30 million cases per year. New jobs will cover the full spectrum, from administrative staff and operations to management.

Fife Council having made reasonable enquiries believes that the information contained within this publication was accurate at April 2011. Fife Council cannot and does not warrant the veracity of the information and excludes any liability for any party's reliance on the information contained herein.

For further Information on this publication please contact:

margaret.galbraith@fife.gov.uk or telephone 08451 55 55 55 ext. 442277