

A publication for
alumni and friends of
Eastern Michigan University
Fall 2004

The Edge



FANtastic! 2004
HOMECOMING
CALENDAR See Inside >>

Homecoming countdown begins

Established in 1849

ABOUT EMU

117,000 ALUMNI - AND COUNTING

University mission

Eastern Michigan University is committed to excellence in teaching, the extension of knowledge through basic and applied research, and creative and artistic expression. Building on a proud tradition of national leadership in the preparation of teachers, we maximize educational opportunities and personal and professional growth for students from diverse backgrounds through an array of baccalaureate, master's and doctoral programs. We provide a student-focused learning environment that positively affects the lives of students and the community. We extend our commitment beyond the campus boundaries to the wider community through service initiatives and partnerships of mutual interest addressing local, regional, national and international opportunities and challenges.

University's guiding principles

The following guiding principles provide standards the University seeks to achieve: accessibility, relevancy, responsiveness, flexibility, quality, collaboration, accountability, affordability.

TheEdge

Volume 2, Issue 1 Fall 2004

Editor
Kevin Merrill ('86)

Photographers
Richard Schwarze
Craig Watson

Graphic artist
Kristen Wimsatt

Executive director of alumni relations
Vicki Reaume ('91, '96)

Director of alumni programs
Amy Schulz

Assistant director of constituent relations
Ken Ruppel

Assistant director of advancement activities
Taryn M. Reid ('02)

Student assistants
Brian Enright
Cassandra Peters
Rachel Reynolds, senior student assistant
Melanie Seasons

Address changes
Direct address changes, duplicate copy information or requests to:
Eastern Michigan University
Office for Alumni Relations
1349 S. Huron St., Suite 2
Ypsilanti, MI 48197

Telephone: 734.487.0250
1.800.8.ALUMNI

Fax: 734.487.7009

E-mail: alumni.relations@emich.edu

Web: www.emich.edu/alumni

Next issue: Winter 2005

Your home team

New faces and new ideas promise an exciting year focused on YOU!

The new academic year is just around the corner but already excitement is building. The campus is ready to welcome back returning students and embrace thousands arriving for their first year of study. To make that welcome even more special, many EMU alumni volunteered to help with Move-In Day activities. That spirit put on proud display the strong bonds that Eastern Michigan alumni carry with them after graduation.

Mark your calendar for the Oct. 2 "Go Green" Tailgate at Rynearson Stadium.

To help those bonds grow stronger and forge new ones among existing students, the Office for Alumni Relations has added two new faces: Ken Ruppel, assistant director of constituent relations and Taryn M. Reid ('02), assistant director of advancement activities.

Along with Amy Schulz, our director of alumni programs, we are working around the clock on your behalf.

Our efforts over the summer have been focused on making Homecoming 2004 the best ever. Dozens of events are planned, including nearly 30 alone for Oct. 2, the day of this year's Homecoming game. The week-long series of events begins with the always fun "Oozeball Tournament" and includes many other EMU favorites, from the All-Greek Reunion at Theo-Door's to the Wednesday Pep Rally outside the REC/IM. We are also pleased that Dr. Maya Angelou will speak to the EMU community Thursday, Sept. 30.

As with all our events, our office will make sure that the "Go Green" Alumni Tailgate continues to be a must-attend event. Our accomplished and eager team is excited to see you and hear from you. If you can't wait until Oct. 2 to share your ideas or memories, drop me a line now at vicki.reaume@emich.edu. Hope to see you soon and as always ... **Go Green!**

Vicki Reaume ('91, '96)

Executive director of alumni relations



From left: Reaume, Ruppel, Swoop, Schulz and Reid.

Advancement Communications' Publications



e-Edge: Electronic newsletter sent third Friday of the month to friends and alumni of EMU. More than 23,000 subscribers.



Exemplar: University magazine mailed three times a year to key stakeholders of EMU. More than 14,000 recipients.



The Edge: Alumni publication. Mailed three times a year. More than 113,000 recipients.

TheEdge

CONTENTS

Cover story & features



NEW MAN ON CAMPUS 4



THE BEST IN MICHIGAN 7

© Steve Frick



PLAYING TAPS FOR REAGAN 9

© U.S. Army Band

4 Willis takes the helm

Craig Willis, a university president for more than 20 years, brings his well-regarded passion for students and the classroom to EMU as interim president. Among his top goals: helping the University hire his permanent replacement.

COVER STORY

15 The Green Machine

It's Homecoming season again, and with it comes nearly 50 events spread across eight days, from Oozeball and a Shrek 2 screening to barbecues and reunions. And lest we forget: lots and lots of tailgating. **See Homecoming calendar: Pages 16-17.**

7 Best of the best

Alumna Heidi Capraro is traveling Michigan this year on behalf of the teaching profession and education, an honor accorded the middle-school teacher after being named the state's Teacher of the Year.

11 Helping hands

Members of the EMU Occupational Therapy Chapter have wasted no time embarking on a series of professional, social and service projects. Chartered in January, the group already has 72 members and an ambitious agenda.

18 Around the campus

Starting with this issue, The Edge presents a full page of coverage highlighting news, trends, people and events from each of the University's five colleges as well as the Department of Athletics.

30 Icing on the cake

Alumnus Ron Campbell arrived in Tampa Bay five years ago as president of a hockey team once labeled the worst sports franchise in America. In June, he hoisted the Stanley Cup over his head after the Lightning won hockey's ultimate prize.

OTHER



8

Photo Gallery



24

Class Notes



32

Calendar

COVER STORY

BY KEVIN MERRILL



A new era for Eastern

Michigan University began Aug. 16, as Craig Willis officially assumed duties as interim president. President Willis spent his first day touring the campus,

visiting with students and faculty, and contacting EMU constituents.

"I look forward to meeting head-on the challenges that are in front of me, and the opportunity to work closely with our students, faculty and community," President Willis said. "Now is an excellent time to pull together and begin building a strong and promising future that brings hope, change and pride back into the EMU community. I am committed to restoring confidence and accountability at the University, and I am convinced that with the support of this entire community, we will keep to our foremost mission of providing a quality educational experience for students."

President Willis replaces Samuel A. Kirkpatrick, who in June announced plans to leave EMU with an effective resignation date of July 31. Kirkpatrick joined Eastern Michigan May 15, 2000, as its 19th president. He has accepted a position as a research fellow with the American Association of State Colleges and Universities (AASCU) in Washington, D.C.

President Willis has a long and distinguished career in higher education. For the past 22 years, he was president of Lock Haven University in Lock Haven, Pa. The institution has about 4,900 students, and is part of the state's public higher education system.

"Dr. Willis is known for his strong and steady leadership, his integrity and his ability to bring diverse perspectives together," said Karen Valvo, vice-chair of the EMU Board of Regents and chair of the Board's search committee. "We are confident that he is the right man for the job at this critical time in the University's history. We very much look forward to his leadership in helping to successfully resolve the issues that have divided the EMU community in recent months."

Prior to Lock Haven, President Willis had leadership posts at Concord College in West Virginia, Ohio's Wright State University, Dayton Public



President Willis takes the reins

Interim leader brings enthusiasm and experience to Ypsilanti – and a desire to open communication lines on campus.

Schools and Ohio Wesleyan University. He earned a Ph.D. in higher education from Ohio State University.

"I have pledged to bring the EMU community a strong sense of openness, a steady hand at the helm and an unwavering commitment to work collectively to do all that we can for this university," President Willis said. "I am extremely pleased to accept this position and look forward to getting to work."

Key tasks President Willis will handle include advancing the University's position in Lansing, defining better internal controls, resolving relationship issues, and ensuring high-quality educational experiences for all students, and successfully completing all collective bargaining agreements.

His appointment is for a period not to exceed July 31, 2005. Guidelines

for the search process for a permanent president are being developed. The process is expected to get fully under way this fall and will be designed to garner maximum input from across the university community.

As part of the new leadership transition at EMU, Donald Loppnow, who served briefly as acting president until President Willis arrived, will continue his role on the executive team, in addition to heading up strategic planning and continuous improvement processes. Loppnow has been working on identifying and recommending approaches to key University issues and will work closely with President Willis to implement those strategies.

In an e-mail message to the University community Aug. 16, President Willis vowed to “help restore hope, change and pride back into the EMU community.”

“As we begin, our challenges may appear more difficult than ever,” he told students, faculty and staff. “But given the reputation of this great institution for outstanding students, dedicated faculty and hardworking staff, we can use this opportunity to work together to become even stronger.”

President Willis’ first official meeting was with members of the Student Leader Group, including the student body president and vice president. He later met with representatives of the EMU Chapter of the American Association of University Professors.

In accepting Kirkpatrick’s resignation, Philip A. Incarnati, chair of the Board of Regents, said: “One of the many things that attracted us to Dr. Kirkpatrick during his candidacy for the presidency was his passion and vision for metropolitan universities. It’s not surprising that he would find this opportunity to influence thinking and policy regarding metropolitan universities at the national level very attractive professionally.”

Under Kirkpatrick, EMU assumed responsibility for administering the Coalition of Urban and Metropolitan Universities, an association of 73 higher education institutions committed to civic engagement. He was one of the founders of the Coalition nearly 15 years ago, and currently serves as chair of the Commission on the Urban Agenda for the National Association of State Universities and Land-Grant Colleges.

From 1998 to 2000, he chaired an action agenda task force for AASCU, which included an emphasis on public engagement. A subsequent task force has developed a related project of the “stewardship of place.”

“My commitment to this national movement is deep



Craig and Marilyn Willis.
Both have doctorates and college-teaching experience.

and abiding,” Kirkpatrick said. “I was pleased to be invited to join the Association as a Senior Fellow in the nation’s capital to continue work on this important area and to pursue related topics on changes in higher education.”

Citing a personal and professional commitment he made on arriving to enhance the University’s quality, design and implement a strategic plan, and develop its national visibility as a model for the “new metropolitan university,” Kirkpatrick said much had been accomplished during his four years.

“All of the elements of institutional success have materialized with great collegial energy,” Kirkpatrick said. “And we have achieved our successes at a rate uncommon for public universities, especially during a time of severely constrained state resources.”

In outlining the goals of his administration, President Willis said he plans to focus on these priorities:

Students: I plan to help EMU keep to our mission to provide a thriving educational environment for our students.

Faculty: I am committed to empowering the faculty to realize their best academic results.

Sound fiscal responsibility: I will work to ensure EMU is fully accountable.

Unify the EMU community: I look forward to drawing upon the expertise of every campus group to strengthen the University on a long-term basis and make our community whole again.

Restore pride: EMU is a fine institution with a long and respected history. I am eager to work with the University community to build upon this distinguished tradition during the coming year.



‘President’ Loppnow

University veteran serves as acting president

After a 30-year career at EMU, Don Loppnow became president—if only for seven business days. A consummate professional and die-hard EMU supporter, Loppnow was named acting president by the EMU Board of Regents, and served in that role from Aug. 5 to Aug. 15.

“I am honored to be able to help during the transition of leadership here at EMU,” said Loppnow, 58. With President Willis’ arrival, Loppnow maintains his leadership role on the University executive team, in addition to his regular post as senior executive for Strategic Planning and Continuous Improvement. He has served as department head for social work, interim director of the Office of Research Development, and as a professor.

Visit us online >
www.emich.edu/president

ALUMNI NEWS



Scholarly

Sokol (left) and Welling

The EMU Alumni > Association Scholarship is given annually to three freshmen, sophomore or transfer students. The \$1,000 award is renewable up to four consecutive years. Sixteen students are currently receiving the scholarship.

The scholarship was established in 1970 to encourage children and grandchildren of alumni to continue the EMU legacy. To highlight the benefits of the scholarship, The Edge will profile two student recipients in each future issue.

Dave Welling, a junior music education major from Ida, Mich., spent a lot of time researching Michigan colleges on the Web as a high school senior. The research helped him narrow his choices to EMU and one other school. A Web search led him to a scholarship service that listed the EMU Alumni Scholarship, which Welling was eligible for because his stepfather is an EMU graduate.

"I always planned to go to college. I just didn't know where at that time," said

Welling. "By the time I applied for the scholarship, I was pretty sure EMU was my first choice."

"College isn't necessarily cheap," said Welling. "It (the scholarship) definitely makes things easier."

Welling was able to get through his first two years without working a part-time job. His extra time was spent as a trumpet section leader in the marching band and on another passion—computers. He might apply for a student job in the information technology department this year. "I'm a pretty good troubleshooter. I'm moving off campus for the first time, and I might need some help with the rent."

If you've glanced at an EMU publication recently, chances are you've seen a picture of a smiling young

woman at the controls of a Cessna airplane. That's sophomore **Laura Sokol**, an aviation flight technology major, and she's smiling because she's doing what she's always wanted to do—study to become a pilot.

Sokol, from Redford Township, Mich., caught the aviation bug from a cousin who is a helicopter pilot for the Detroit police department. The scholarship, along with grants, part-time work and, hopefully, a very small amount of loans, will help get her through school.

"I am so very thankful for the scholarship," Sokol said. "The flight program is very expensive. If I can finish without thousands of dollars in loans, I will be ecstatic."

Sokol's career focus was evident even in high school. "I took every AP (advanced placement) class I could. I started college with 16 credits, so I'd have less tuition to pay. Wanting this so badly keeps me on track."

— Kathleen Shields

EMU Alumni Association



TAKE FIVE

WITH BILL MALCOLM ('76)

Q: If you were a student at EMU today, what would you major in?

A: I would major in K-12 education. I enjoy working with young people.

Take 5 is a new feature in which The Edge asks five questions of a member of the EMU Alumni Association Board of Directors.

Q: How many items do you own that are imprinted with the EMU Eagle logo or EMU logo?

A: I own several pieces of clothing with the Eagle logo. I also have an EMU hat. The item I treasure the most is my EMU Huron football helmet. Right now, it's on display with other Huron/Eagle memorabilia.

Q: How has EMU made a difference in your life?

A: EMU has given me the opportunity to secure an education that has served me well since my graduation in 1976. I've also formed many solid friendships over the years with other EMU alumni.

Q: If we gave you \$100, how would you spend it?

A: I would donate the money to the Washtenaw County Summer Sports Camps.

Q: Did you attend your graduation ceremonies?

A: Yes, I did. I wore a dress shirt, tie and slacks.

At the time, platform shoes were popular, so I'm sure I wore a pair of those, too!



Learn more about the Alumni Scholarship >>

For eligibility info or to make a donation, please visit www.emich.edu/alumni/awards/scholar.html

ALUMNI PROFILE

BY CAROL ANDERSON

Teacher Heidi L. Capraro

and her sixth-grade students sometimes have their heads in the clouds, and that's a good thing.

"My students get a kick out of identifying clouds and are very cloud-savvy," she said. They are studying weather just as Capraro did as a student in Professor Carl Ojala's weather class, but for the next 12 months EMU grad, Capraro, will enter a new arena.

She will deviate from her 14-year routine of reporting to Hillside Middle School in Northville to take on a new challenge as the 2004-05 Michigan Teacher of the Year, awarded by the Michigan Department of Education.

"Her proven skills as a teacher, mentor and creative leader make her the perfect ambassador for the teaching profession in Michigan," said Tom Watkins, Michigan Superintendent of Public Instruction.

Capraro will travel the state talking about education with teachers, administrators and politicians. She will attend state Board of Education meetings and the Governor's Conference offering a teacher's perspective on various education topics.

Already, Capraro has attended a U.S. Department of Education conference in Washington, D.C., and traveled to Lansing for education briefings.

"The next year will be extremely exciting and challenging," said Capraro. "It's a whole new ball game with a huge learning curve."

The Michigan Teacher of the Year is someone who is a leader and mentor to other teachers, she said.

Educators may not be as fanatical as rock star fans camping out for tickets, but they're just as eager to have Capraro appear. She has received invitations statewide to speak, and Capraro is ready to accept. She wants to support new teachers as well as seasoned veterans and stem the defection of young people from teaching.

"Thirty to 40 percent of teachers leave the profession in their first five years of teaching," she said. "I want to give teachers a positive viewpoint and tell them they are in a very rewarding career."



© Steve Felt

Teaching gains an ambassador

Heidi Capraro embarks on a year-long mission to promote teachers and the profession she loves.

"New teachers need to see the big picture to realize that teaching isn't just a paycheck; it's a career choice with tremendous rewards not available in any other job. Teachers affect the lives of so many children in such a positive way," she said.

Capraro graduated from EMU's College of Education with a bachelor's degree in elementary education (1989) and a master's degree in middle school curriculum (1994). Capraro is the third EMU alumnus in 13 years to win the state Teacher of the Year award.

The Howell resident credits her father, a retired high school chemistry teacher, with steering her toward education and several EMU professors for instilling in her a love of teaching.

ALUMNI PHOTO GALLERY



▲ Recipients of the 43rd Annual Alumni Association Awards, honored at a May 8 dinner, are (from left): Neeta Delaney ('85); Dennis Cockrum ('77, '84); Robert England; Hon. Donald E. Shelton; Barbara Weiss ('50, '69); Daniel J. Minzey ('97, '98); and John C. Herron ('41).



▲ EMU in the Motor City: Among the attendees at the May 12 Detroit Athletic Club reception were Penelope Crummie ('98) and Sonia Ponce de Leon ('98).



▲ Traverse City reception: Among the alumni at the June 25 alumni outreach event up north were Mark Smith ('86) and his wife Kris.



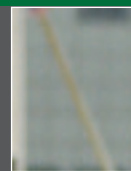
Apparel & souvenirs Got style?

Looking for the coolest EMU apparel and souvenirs? Visit The Competitive Edge Pro Shop in the REC/IM Building. The shop is the only University-owned clothing store on campus. A percentage of revenue goes toward EMU scholarships. Fall and winter hours are 10 a.m.- 8 p.m., Monday-Thursday; 10 a.m.-7 p.m. Friday, and 11 a.m.-5 p.m. Saturday. More info: 734.487.4204.

Visit us online >

www.emich.edu/alumni/merchandise/

Go Green!



**EMU
PRIDE**
PLATES & CARDS



Ride with pride

The EMU license plate is just \$35 in addition to your annual vehicle registration fee. Of the \$35, \$25 supports alumni scholarships and programming initiatives. Since the program began, thousands of EMU plates have been issued, helping to raise nearly \$100,000. To get your plate, visit www.michigan.gov/sos.

Get carded again

Alumni of Eastern Michigan University are eligible to receive our credit card, which helps build scholarships. For more information, call 734.487.0250 or e-mail alumni.relations@emich.edu.

EMU ALUMNI ASSOCIATION

Officers: President: Karen M. Pitton ('79)

President-Elect: Jennifer Rass ('93)

Past President: Eric Rass ('91, '95)

Parliamentarian: Daniel Hunter, Jr. ('93)

Secretary/Treasurer: Bud Schimmelpfenneg ('68)

Other Board Members: Larry Andrewes ('66, '68);

Tom Borg ('79); Toni Bowden ('95); George Eason ('88);

Paula Featherston ('96, '02); Scott Frush ('94);

Gerald Gemignani ('94); Jason Hansen ('83);

Ernie Krumm ('90, '97); Jeannine Kunz ('93);

Rusty Machovec ('80); William Malcolm ('76);

David Mamuscia ('67, '71); Jerry Marszalek ('67, '74)

Dr. Joe Misiewicz ('68, '70); Michelle Owens ('94, '97);

George Papadopoulos ('89, '92);

Ronald Sesvold ('67); Gregory Sheldon ('96);

Jeff Stabnau ('73)

On The Web Alumni Association membership is free.

So what are you waiting for? Sign up today online.

www.emich.edu/alumni/association

ALUMNI PROFILE

BY KEVIN MERRILL

Inside a California hotel room, Sgt. Maj. Woodrow English laid out his U.S. Army Band uniform and readied himself to perform the most-watched rendering of Taps of his career: the sunset internment of President Ronald Reagan. But as he did,

English, the principal bugler for the Band and a 1975 EMU graduate, noticed that his uniform dress shoes were leaking sand.

Less than 48 hours earlier, English had been in France, at Omaha Beach, performing Taps as part of a military ceremony commemorating D-Day. Now, a phone call, an overseas military transport and a transcontinental flight later, English was shaking out sand from one of the world's most famous beaches and preparing for his center-stage role at one of America's most revered national events: a presidential funeral.

"It certainly set me back," English said of the moment. "I realized then that I had come a long way."

An estimated 35 million people watched English perform the 24-note melody at the June 11 internment in Simi Valley, Calif. "It was a really amazing experience—to have the last say after such an outpouring of feeling," he said of the week-long funeral activities. "It was truly an awesome honor."

English has played with the Army Band for 28 years, and as its principal trumpeter and senior soloist, he's known for more than a decade that when President Reagan died, he would be the featured bugler playing Taps. So meticulous is presidential funeral planning that every detail is planned years in advance. "Every time I went on a vacation, I always wondered if I was going to be called back," said English, a native of Coldwater, Mich., who entered EMU in 1971.

As nerve-racking and emotional as the Reagan performance was, especially the hours of waiting for his cue inside the Ronald Reagan Presidential Library, it wasn't the most difficult Taps performance of his life. That occurred in 1971, when he and brother Thomas performed Taps together at the funeral of their father, Harold English. "I said then that I wouldn't do it



Sgt. Maj. Woodrow English played Taps Memorial Day when President Bush laid a wreath at the Tomb of the Unknown Soldier.

Bugler delivers soulful finale

Sgt. Maj. Woodrow English has poignant role as performer of Taps at the sunset internment of President Ronald Reagan.

again. It was so emotional," English said. "And now, I do it for a living."

English's Taps-playing abilities are heard nearly every day in cemeteries across America. The Army recorded his performance and transferred the sound to a microchip that plays and amplifies the sound in "dummy" bugles. The device was created in part to meet the ever-growing demand for Taps at ceremonies honoring World War II veterans.

At EMU, he played in the marching band, concert band and orchestra, and he credits Professor Carter Eggers with shaping his talents. He even played in the faculty brass quintet as a junior and senior. He took up the trumpet in fifth grade. "I knew that's what I wanted to do from an early age," he said.

CHAPTER NEWS



From left: Mike Price of Crown Corr, Inc; Brandon Kinsey ('97 B.S.) of Centria; and Mike Muse and Sonny Hamezadeh of The Collaborative, Inc.

Time for tee

Alumni chapters > and other groups are taking to the fairways this summer and fall in record numbers to help raise money for favorite EMU causes.

The golf season opened May 19 and before the summer was over, 10 groups would schedule golf fund-raisers. Locations varied from Romulus to Hartland, but most were held at the Eagle Crest Golf Club in Ypsilanti.

Golf outings are popular fund-raising tools because they combine a "relaxing" day on the course with social networking. Among the groups and chapters hosting tournaments this year:

- The Construction Management Outing (May 19).
- The Football Alumni Outing (June 11).
- The Kensington Valley Alumni Chapter's 19th Annual "Best of Best" Outing (June 19).
- The annual Lucy Parker Golf Outing, sponsored by the Department of Athletics (June 24).
- The Accounting Alumni Chapter's 9th Annual Alumni/Student Golf Scram-

ble (June 25).

- The Friends of Wrestling Golf Outing (July 12).
- The Black Alumni Chapter's Annual Scholarship Golf Outing (Aug. 14).
- The Latino Alumni Chapter 3rd Annual Golf Outing (Aug. 21).
- The 10th Annual Ron Oestrike Varsity Baseball Alumni and Friends Golf Tournament Sept. 20. Call 734.487.0315 or e-mail roger.coryell@emich.edu.
- Men's Basketball Outing Oct 1, Pineview Golf Course. Contact Mike Malach at michael.malach@emich.edu or 734.487.1050.

GOING GLOBAL



REACHING OUT

EMU'S INTERNATIONAL INITIATIVES

While the United States, and more specifically Michigan, continues to be home to most EMU alumni, thousands do reside around the globe.

As part of stepped-up efforts to serve international alumni,

EMU's Office for Alumni Relations began an outreach effort this spring with a series of receptions that included stops in Bangkok, Thailand; Kuala Lumpur, Malaysia; and Singapore.

The University's Division of Enrollment Services, the office on campus responsible for such activities as admissions and registration, co-hosted the receptions.

The trip was born out of concern over declining enrollment from international students, due in large part to tightened visa restrictions in the wake of the Sept. 11 terrorist attacks. But an equally important motivation stemmed from a desire to more effectively reach our international alumni.

Turnouts were high and enthusiasm was infectious at each reception. Alumni who attended were thrilled to have the opportunity to interact with each other and representatives from Eastern Michigan University. Each reception lasted well past its scheduled ending time, as participants lingered to socialize.

(More details on the outreach efforts, including the Far East receptions, will appear in the Winter issue of The Edge.)



Many thanks: (Far left) Col. William J. Stephens ('60), EMU regent emeritus; (third from right) Jim Moors ('74), president of EMU's National Capital Alumni Chapter; and (second from right) Jacqueline Stephens, wife of Col. Stephens.

Remembering kindness

In February 1964, > a group of EMU students went to Washington, D.C., to advocate on behalf of the civil rights bill. During their visit, the Rev. I. Alphonso Miller graciously hosted them, allowing the students to sleep in the lower auditorium of his Ward Memorial African Methodist Episcopal Church.

When Rev. Miller died unexpectedly a week later, the students—moved by the kindness shown to them—made the first contribution to a scholarship fund in his name. In June, members of the

National Capital Alumni Chapter represented Eastern Michigan University as the church marked the 40th anniversary of the Issac Alphonso Miller Scholarship program.

"The warmth of the reception was remarkable," said Jim Moors ('74), chapter president. "It's such a perfect story for Eastern, because what's Eastern's mission? Education."

Did you go on that February 1964 trip? Do you know someone who did? If so, contact Amy Schulz at 734.487.0250 or amy.schulz@emich.edu.

CHAPTER PROFILE

BY KEVIN MERRILL

The members of one of EMU's newest alumni chapters have wasted no time embarking on a series of professional, social and service projects.

The EMU Occupational Therapy Chapter, now at 72 members and growing, was officially chartered only in January. But the group already has pulled off a series of events, including:

- A kickoff reception in February at an EMU women's basketball game.
- A May conference workshop at William Beaumont Hospital in Royal Oak.
- A summer volunteer project with Habitat for Humanity in Ann Arbor.
- A summer social at University Park, followed by a trip to the Ann Arbor Street Art Fair.

"Our main goal is to get the word out about what OT is: who we are and what we do," said Amanda Manthey, a 2001 OT graduate of EMU who works in the Flower Rehabilitation Center at Flower Hospital in Sylvania, Ohio. "The bottom line for our profession is helping people improve or influence their health through participation in purposeful and meaningful activity."

Chapter officers are: co-presidents Nancy Milligan ('76) and Angela Meyer ('01); co-vice presidents Celeste Gibbons ('00) and Kathy Thompson ('03); treasurer Toni Atkinson ('00); and co-secretaries Manthey and Beth Halpin ('01).

The OT Alumni Chapter is the only one of its kind in Michigan. In addition to alumni, the chapter is open to current EMU OT students, faculty and emeritus faculty; honorary memberships are available to friends of the chapter. Dues are \$15 for professionals, \$7 for students.

Among the chapter's goals for the coming year: increase membership to 100; increase member involvement in professional development, social and service events; and continue to advocate for EMU's OT program and the profession in general. The group also plans to have a reunion outside Rynearson Stadium Oct. 2 as part of Homecoming activities.

The chapter's roots go back only a year, when organizers held a strategy meeting Aug. 28. To get the word out initially, the group contacted more than



Lending Habitat for Humanity a helping hand were (from left): Nancy Milligan, Amanda Manthey, Bob (Habitat for Humanity leader), Cheryl Jean and Kathy Thompson.

Group extends helping hands

Occupational Therapy Alumni Chapter is off to a fast start in serving professional, social and service needs of members.

1,000 alumni through fliers and a newsletter. Among the early boosters of the chapter were three OT department faculty members: Milligan, Judith Olson and Elizabeth Francis-Connolly.

One of the chapter's first acts was to organize the May professional development conference. The speaker was OT Professor Gretchen Reeves. Nearly 50 occupational therapists from around the region paid \$80 each to attend. The chapter is in the early stages of planning a similar fall conference.

The program, founded in 1941, offers a master of occupational therapy (MOT) degree and a master of science degree for graduates with an existing undergraduate degree. The MOT program combines three years of undergraduate coursework and two years of upper-level coursework.

CHAPTER DIGEST

Chapter name	President	E-mail/URL	Phone
• Accounting Alumni	Patrick Gannon ('92)	patrick.gannon@oracle.com	773.267.0469
• Black Alumni	George Eason ('88)	georgeeason@sbcglobal.net	313.657.6050
• Central Arizona Alumni	Keith Klein ('97)	keithtk1@cox.net	480.722.2812
• Construction Mgt. Alumni	James Hogan ('92, '98)	mail@usconstruction-design.com	313.779.8172
• Chicago Alumni	Chris Carollo ('98)	cacarollo@yahoo.com	773.486.1458
• E-Club Alumni	Robin Baun ('75)	robin@mrannarbor.com	734.213.1991
• Greek Alumni	Greg Nixon ('99)	Maxjenn@aol.com	248.414.6501
	Jennifer Rass ('93)	gnixon29@hotmail.com	734.699.4297
• Historic Preservation Alumni	Bill Click ('03)	bill.click@comcast.net	734.461.2251
• Huron Restoration Alumni	Maynard Harris ('53)		517.423.7026
• IT/MLST *	Ric Hogerheide ('96)	Hogerheide5549@aol.com	810.694.1233
• Kensington Valley Alumni	Jason Hansen ('83)	jhansen@wnet.net	734.420.3386
• Latino Alumni	Sonia Ponce de Leon ('98)	emu_latinoalumni@yahoo.com	313.282.0442
• LGBT and Friends Alumni **	Michael Daitch ('75)	daitch@JFMD.org	586.468.7001
• MBA Alumni	Barbara Porter ('81)	porterpytko@aol.com	248.433.3514
• MPA Alumni ***	Maureen Burns ('80, '90)	moburns@umich.edu	734.973.6664
• Military Science Alumni	Maj. Michael Knott	michael.knott@emich.edu	734.487.1020
• National Capital Alumni	James A. Moors ('74)	JMoors4581@aol.com	703.917.1188
• Occupational Therapy Alumni	Nancy Milligan ('76)	nancy.milligan@emich.edu	734.487.6839
	Angela Meyer ('01)	angela.mariameyer@hotmail.com	248.506.2068
• Southern California Alumni	Marian Bliznik ('71, '76, '90)	business2go@adelphia.net	949.729.8008
• Western Wayne County Alumni	Mike Gerou ('79)	mgerou@35thdistrictcourt.org	734.781.0141

* Interdisciplinary Technology/Master of Liberal Studies in Technology

** Lesbian, Gay, Bisexual, Transgender *** Master of Public Administration

HOSTS WITH THE MOST



Members of the National Capital Alumni Chapter showed a group of EMU students a good time this spring in the nation's capital. The students, pictured above on the steps of the U.S. Capitol, received a House tour by Dennis Hertel ('71), a former six-term member of the House. Students and alumni then had dinner and watched a stage production. The following day, the local alumni, using an idea suggested by Mike Ferens ('86), treated for lunch at a local pub.

Visit our alumni chapters online:

www.emuba.org

www.historicpreservationalumni.com

www.emugreekalumni.org

www.huronalumni.org

Point and Click

Don't call him > "The New Bob Vila." At least not yet.

Bill Click ('03) is hosting a new cable series on DIY Network called "Restoration Realities." The show will premiere on the how-to cable network in early 2005. Each 30-minute episode features Click and homeowners across the country and their great old homes.

A resident of Clinton, Mich., and president of EMU's Historic Preservation Alumni Chapter, Click's road to cable "stardom" started with a casting-call e-mail forwarded to him by a friend in Lansing. On a whim, Click had a friend help him with an audition tape. With the experience the network was looking for, "I'd be stupid not to give it a shot," Click recalled. Dozens of tapes

were reviewed; eight candidates auditioned in Knoxville, Tenn. Two weeks later, Click received an offer to host the program. "I was just blown away," Click said.

Click is busy this fall traveling the country and taping 26 episodes. The show follows homeowners as they face the step-by-step challenges of restoration. "It's a show about learning. It's not an entertainment show," Click said. Among the early projects tackled: restoring a wooden baluster on a Federal-style staircase and repairing damaged ornamental plaster in an Italianate home.

Not only is Click versed in historic preservation, he owns his own home-building construction and preservation consulting company.



Lights, camera, Click: Bill on the set.

M

By Susan Hodgson, 2004
EMU Foundation Intern

ost weekday evenings, students at Eastern Michigan make more than 2,000 phone calls—all to benefit their fellow students. Student callers contact alumni and friends throughout the week to promote campus

events, departments and programs and to raise money for the colleges.

The EMU Phone Center, on the University's West Campus, generally employs 21 currently enrolled students who call on behalf of the University's five colleges for three main reasons: to update information; to act as a liaison between alumni, friends and EMU; and to invite them to participate in college fund-raising efforts.

On an average night, each student makes between 200 and 250 attempted calls. Their combined effort adds up to more than 2,000 calls per night.

Every night yields different results. When EMU callers contact alumni who have given before, they average a higher dollar amount than most evenings. The money raised is transferred to each college's development account. The dean designates those funds based on college priorities.

Last year's "top caller" was Robert Gierwatowski, who raised more than \$10,000 in his first year. "I've put a smile on a few people's faces after they spoke to me," Gierwatowski said, "especially the alumni who live on the other side of the country."

After more than three years with the Phone Center, first as a caller and now as a student supervisor, Arthur Burgman II has learned valuable real-world skills such as managing a team, superior customer service, fund-raising and telecommunications.

"It's a really good place to meet people," Burgman said. "By being a caller, you learn a lot about EMU and about fund-raising."

Among the EMU student callers are future nurses, law enforcement officers, psychologists, teachers, artists and computer programmers. "The Phone Center has provided these students with experiences that will prove vital to their success," said Rosa Roberson, Phone Center manager.



Students work the phones in the Cooper Building.

Dialing 'E' for Eastern

Students make hundreds of calls a night to EMU alumni and friends to raise money for colleges and programs.

Visit us online >

www.emufoundation.org

\$15,000 donation

Constructive

Alumni and friends of EMU's > construction management program have given generously through an annual golf outing named in honor of Emeritus Professor John A. Weeks. This year's event, which took place May 19 at Pine View Golf Course in Ypsilanti, raised \$15,000. The scholarship fund, also named for Weeks, benefits construction management majors in the College of Technology who are involved in Eastern Constructors and are student members of the American Institute of Constructors.



From left: Dan Saltsman (kneeling), Vicki Gotts, Jim Stein, Sarah Pinten, Ossie Pfaffman, COT Dean John Dugger, John Weeks, Gino Hogan and Daryl Bell (kneeling on right).

Theo Hamilton has been around EMU for nearly a third of its 155-year existence.



Uncle Theo

In 1941, > 18-year-old Theophilus Elliott Hamilton attended Michigan State Normal College, a campus with seven buildings and a student population of about 1,100.

Sixty-three years later, 81-year-old Hamilton leaves Eastern Michigan University, a campus of 129 buildings and nearly 25,000 students. He officially retired Aug. 7, 37 years to the day from the date he was hired.

Known as "Uncle Theo," Hamilton has been part of EMU for almost one-third of the school's existence: 11 years as a student and 37 as an employee. He attended

from 1941-55 with a three-year break for military service.

One of the biggest changes he's observed: the increased number of African-American students. In 1941, he was one of only 16 on campus. Today, about 15 percent of the student body is African-American.

Hamilton earned a bachelor's, master's and specialist degree and K-12 certification. For the next 12 years,

after graduating in 1955, he taught music in the Upper Peninsula and Highland Park.

But in 1967, a phone call from then-EMU President Harold Sponberg lured him back to campus as assistant director of personnel and its first African-American professional. "He (Sponberg) said I had a gift and should be working with students," said Hamilton, who in 1969 transferred to the Career Services Center. He has helped thousands of students find teaching jobs. Now, he plans to teach piano, start a senior citizen's choir and volunteer with Meals on Wheels.



FRANKLY SPEAKING

This summer, EMU's Bruce T. Halle Library became one of only two libraries in Michigan—and one of only 80 nationwide—to host the traveling exhibition, "Frankenstein: Penetrating the Secrets of Nature." To supplement the exhibition, EMU hosted a series of lectures and movies. The exhibit showed how playwrights, filmmakers and the media have transformed Mary Shelley's saga, published in 1818, into one of the Western world's most enduring myths. "We are delighted to have been selected as a site for this exhibition since it was very competitive," said Julia Nims, information services librarian.

WEAR IN THE WORLD?

Do you have a picture of yourself wearing EMU gear in a faraway location? If so, share it with us. E-mail the images to e-alumni@emich.edu or use regular mail:

The Edge,
EMU
18 Welch Hall,
Ypsilanti, MI
48197

**So start traveling ...
and start shooting!**



On location in:

Mexico

Foreign travelers > Pat (Mannino) Northrup (B.S. '76, M.A. '80) and Jeannette (Mannino) Meyer (B.S. '71 and M.A. '75) traveled to Cancun, Mexico, this summer. They are pictured here at Chichen Itza, the most visited archaeological site in the Yucatan peninsula.

And yes, they climbed all 91 steep steps of The Temple of Kukulcan, rising behind them.



HOMECOMING 2004



Shrek makes an appearance on campus Sept. 29.

© CORBIS

Fire up the grill, > flip through the Rolodex, gas up the car, stock the cooler and press your favorite Eastern Michigan University shirt. It's time for Homecoming again!

The annual week-long series of events begins Sunday, Sept. 26, with the 7th Annual Oozeball Mud Volleyball Tournament at Hoyt Field. The excitement builds toward the 2 p.m. kickoff Saturday, Oct. 2, when the Eagles take on the University of Idaho Vandals.

Nearly 30 events are planned for Saturday, starting with Join the Crew Team, an event on Ford Lake where the

community can meet the EMU women's crew team.

One of this year's new events: a mid-week campus movie shown in Roosevelt Hall auditorium. The feature: "Shrek 2." The show starts at 9 p.m. and admission is free.

As always, there are many reunions as part of Homecoming, such as those for student media, McKenny Union and Campus Life, accounting and LGBT alumni.

A full-week calendar appears on pages 16-17. For more updates and the latest schedules, visit the Homecoming Web site at www.emich.edu/homecoming.

Co-chairs of this year's celebration are Jeff Koras, assistant director of business operations for the Division of Student Affairs; and Vicki Reaume, executive director of alumni relations.

Student tailgating begins at noon, as does the official "Go Green" Alumni Tailgate, sponsored by the Office for Alumni Relations. The Chapter of the Year awards will be presented then.



A Homecoming tradition returns for its 14th annual fall performance, as the Black Greek Step Show kicks, chants and marches its way into the Convocation Center.

The annual event is a fund-raiser for the EMU Black Alumni Chapter, which has endowed a scholarship program for EMU students. The chapter's fund-raising events in the past 15 years have led to the distribution of more than \$100,000, mostly in the form of book-purchase grants for students.

Tickets are \$10 for the Friday, Oct. 1 show. The show starts at 7 p.m. and features eight Greek groups from EMU: Alpha Phi Alpha Fraternity, Inc.; Delta Sigma Theta Sorority, Inc.; Iota Phi Theta Fraternity, Inc.; Kappa Alpha Psi Fraternity, Inc.; Omega Psi Phi Fraternity, Inc.; Phi Beta Sigma Fraternity, Inc.; Sigma Gamma Rho Sorority, Inc.; and Zeta Phi Beta Sorority, Inc.

Black Greek Step Shows are filled with rhythmic marching, chanting and synchronized dancing; the choreography is often elaborate. Eric Brown, a 2003 graduate and chairman of this year's show, was stepmaster for his own fraternity, Kappa Alpha Psi, for its Stepshow performance.

"The show gives the community a chance to view Greek life in a different way," Brown said. "Some students put a lot of time into it, and the performances are truly remarkable."

Said George Eason, president of the Black Alumni Chapter: "Not only does the Step Show benefit students at Eastern through scholarships, they also get a great show for a marginal fee."

(The Edge, the alumni magazine, is one of the show's sponsors.)



MEMORY LANE

The year was 1954. "I love Lucy" topped the charts and the U.S. Supreme Court was issuing its landmark Brown v. Board of Education ruling. It's also the year EMU celebrates this Homecoming season by honoring the Class of 1954 during the annual Golden Years Celebration. Events include a Friday induction luncheon, campus tours and the Saturday brunch, tailgate and game. If you haven't received your invitation by September, and would like to attend the events, contact Mary Cooperwasser at 734.481.2307 or mary.cooperwasser@emich.edu.

© CORBIS

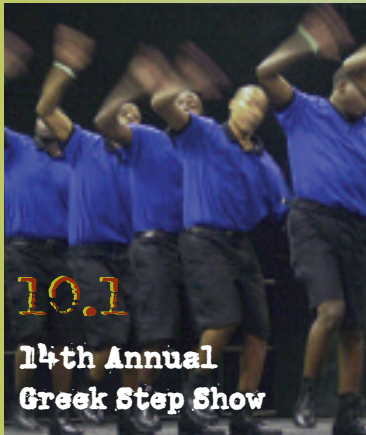
Get calendar updates online:
www.emich.edu/homecoming

Schedule of Events



9.26

Oozeball Mud
Volleyball
Tournament



10.1

14th Annual
Greek Step Show



9.29

4th Annual
Staff Alumni Social



9.27-10.1

Spirit Station

Multi-Day Events

Spirit stations: Monday-Friday, 10 a.m.-2 p.m. Show your EMU spirit and stop by the four spirit stations on campus: McKenny Union, Bruce T. Halle library, Eastern Eateries, REC/IM.

Homecoming Court voting: Sunday (starting at 4 p.m.) through Wednesday (at noon). Vote at www.emich.edu/homecoming.

Sunday, Sept. 26

7th Annual Oozeball Mud Volleyball Tournament: 1 p.m., Hoyt Field. \$45 team registration, four-on-four co-ed teams. DJ, food and giveaways. More info: REC/IM at 487.1338.

Homecoming 2004 Kickoff BBQ: 2-4 p.m., Hoyt Fields. Enjoy competitions, Homecoming King and Queen candidates, football player appearance, DJ, food and prizes. More info: alumni relations at 487.0250.

Homecoming Gala: "Beat Idaho Vandals Buffet" for students. 1-6 p.m., Eastern Eateries, meal plan or flex; all others \$10.95 each.

Monday, Sept. 27

Coach Jeff Genyk Radio Show: WAAM 1600, tune in or drop in, 7-8 p.m. Frenchies in Depot Town.

Banner Decorating Contest
Deadline: 10 p.m., Student Success Office, Putnam Hall. Banners available starting Sept. 17 in the Student Organization Center, McKenny Union. Prizes awarded at the Pep Rally Sept. 29. More info: Student Success Office at 487.0267.

EMU Pride Day: Help clean and beautify campus. 11 a.m.-1:30 p.m. More info: Cynthia Ellis at 487.2360 or cells3@emich.edu.

Tuesday, Sept. 28

All-Campus Picnic: 11:30 a.m.-1 p.m., Mark Jefferson Mall.

No Limit Texas Hold 'Em Poker Tournament: 6:30 p.m., REC/IM. More info: Lou or Michelle at 734.487.1338

EMU Black Alumni Chapter Presents the Undergraduate Networking Symposium: 7-9 p.m., McKenny Union Guild Hall. More info: Rhena D. Holmes at 313.930.6285 or rhenad@yahoo.com; Eric Brown at 734.504.7303 or ebrown@emich.edu.

Wednesday, Sept. 29

4th Annual Staff Alumni Social: 11:30 a.m.-1:30 p.m., McKenny Union Ballroom. Admission is a donation to Alumni Scholarship fund; reservations required. More info: alumni relations at 487.0250.

Pep Rally: 8 p.m., University Park (behind the REC/IM). DJ, cheerleaders, EMU Marching Band and giveaways.

Movie Night featuring "Shrek 2": 9 p.m. Roosevelt Hall auditorium. No charge!

Homecoming 2004 Decorating Contest: Decorate your office/departments door or office space and win a free office lunch. Judging starts at 2 p.m. More info: alumni relations at 487.0250.

Thursday, Sept. 30

EMU T-shirt Exchange: 10:30 a.m.-2:30 p.m. Tent outside northwest corner of Pray-Harold. Trade in another college or university item of clothing or hat for a free EMU T-shirt!

Campus Life presents Dr. Maya Angelou: 8 p.m., EMU Convocation Center. Tickets: \$5 (students), \$10-\$25 (public). More info: Campus Life at 487.3045

Friday, Oct. 1

Campus Green and White Day: Wear that spirited EMU Green and White! You never know who might be watching – you may be handed a free gift.

Football Luncheon: Get the scoop from Coach Jeff Genyk. Noon at Frenchies in Depot Town. More info: athletics at 487.5642.

Men's basketball program golf outing: 1:30 p.m. at Pineview Golf Course. More info: Mike Malach at michael.malach@emich.edu or 487.1050

Golden Years Reunion Honoring the Class of 1954: Coffee and registration start at 10:30 a.m. in McKenny Union foyer area. Noon-2 p.m., lunch and induction ceremony in McKenny Union Ballroom. Campus tours are available. More info: Mary Cooperwasser at 734.481.2307 or mary.cooperwasser@emich.edu.

Black Alumni Chapter 14th Annual Greek Step Show:

Doors open at 6 p.m., show begins at 7 p.m., Convocation Center. Advance tickets \$10. More info: Eric Brown at 734.844.9061. For tickets, contact EMU Ticket Office at 487.2282.

EMU Black Alumni Afterglow: 9:30 p.m.-1:30 a.m., Frenchies Restaurant in Depot Town. \$10 in advance; slightly higher at the door. Bring your Step Show ticket stub to the door and receive a discount. More info: George Eason at 313.657.6050 or georgeeason@sbcglobal.net.

EMU women's soccer vs. Western Michigan University: 4 p.m., free. EMU soccer field.



EASTERN MICHIGAN UNIVERSITY

GAME DAY October 2

9:30 a.m.: Meet the EMU Crew Team. At Ford Lake Park. More info: Pamela Besteman at 487.6690.

10 a.m.: EMU Campus Tours. Schedule in advance; 10 a.m. and noon. More info: Andrea Helfer in admissions at 487.8947.

11 a.m.: Golden Years Reunion Brunch. University House. More info: Mary Cooperwasser at 734.481.2307 or mary.cooperwasser@emich.edu.

11 a.m.-1 p.m.: College of Technology Homecoming Brunch. Carillon Room, library. More info: Milt Jackson at 487.0354 or milton.jackson@emich.edu.

11 a.m.: 9th Annual Alumni Baseball Game and Reunion. Oestrike Stadium. More info: Coach Coryell at 487.0315.

11:30 a.m.-12:30 p.m.: Fans' Coaching Clinic: Instruction, drills with Coach Genyk. Free T-shirt for all participants. To R.S.V.P., contact athletics at 487.5642.

11:30 a.m.-1:30 p.m.: College of Health and Human Services' Distinguished Alumni Awards and Scholarship Recognition Reception. 108 Marshall Building. More info: 487.0077.

11 a.m.-2 p.m.: Student tailgating at Ryneerson Stadium. More info: athletics at 487.7859.

11 a.m.-1 p.m.: International students tailgate and BBQ. West side of Ryneerson Stadium. More info: Ken Ruppel at 487.0250.

11 a.m.-2 p.m.: LGBT Alumni Chapter Tailgate. Ryneerson. More info: Michael Daitch at 586.468.7001.

Noon-6 p.m.: Shuttle Service to Ryneerson Stadium. Bus stops at Ann Street by Putnam residence hall, Forest Street at Sill Hall, McKenny Union and The Village. More info: Convocation Center ticket office at 487.2282.

Noon-2 p.m.: Go Green Alumni Tailgate. Ryneerson. Benefits EMU Alumni Scholarship. First 500 guests receive EMU giveaway item compliments of Continuing Education. More info: alumni relations at 487.0250.

Noon: Former Homecoming King and Queen Reunion. Go Green Alumni Tailgate. More info: Katie Holdgreve-Resendez in Campus Life at 487.3045.

Noon: Alumni Wall of Fame. Go Green Alumni Tailgate. Bring your business card to display.

Noon-2 p.m.: REC/IM Alumni Staff Reunion. Porter's Park. More info: Michelle Owens at 487.1338 or michelle.owens@emich.edu.

Noon-2 p.m.: McKenny Union and Campus Life Reunion. Ryneerson. More info: Katie Holdgreve-Resendez at 487.304. michelle.owens@emich.edu.

Noon-2 p.m.: Student Media Alumni Reunion. Porter's Park. More info: Kevin Devine at 487.1026.

Noon-2 p.m.: Accounting Alumni Chapter Alumni/Student Tailgate. Ryneerson. More info: Howard Bunsis at 487.2519.

Noon-2 p.m.: Alumni Cheerleaders Reunion. Go Green Alumni Tailgate, Ryneerson. Wear green and white and cheer on the Eagles with the EMU cheerleaders. More info: Amy Schulz at 487.0250.

Noon: Alumni Marching Band Reunion. Ryneerson. Check in at noon at game-day practice field (north of the stadium); alumni band rehearsal at 12:30 p.m. More info: Amy Wagner at 487.4380.

1 p.m.: Alumni Chapter of the Year Presentation. Go Green Alumni Tailgate, Ryneerson.

1:45 p.m.: Parade of Nations. More than 90 flags from EMU students' home countries. To volunteer to be a flag bearer, contact Ken Ruppel at 487.0250 or ken.ruppel@emich.edu.

2 p.m.: KICKOFF! EMU vs. Idaho Vandals. Ryneerson Stadium. NCAA Take a Kid to the Game Day all kids 17 and under are free. Free Thunderstix to the first 5,000 fans. Bring a used, unwanted cell phone to donate to the American Cellular Donation organization. EMU welcomes back the 1954 football team. Join us as we honor them during pre-game. Ticket info: 487.2282.

Half Time: Half Time Show featuring Homecoming Court Coronation and Alumni Band Performance.

During the game: \$1,000 Spirit Contest: Sign up with 10 friends and show the most spirit at the game and win \$1,000. Call 487.5642 to register.

4 p.m.: 5th Annual Greek Alumni Chapter All-Greek Reunion at Theo-Door's. Proceeds benefit Greek Scholarship Fund. More info: Greg Nixon at 734.699.4297 or Jennifer Rass at 248.414.6501.

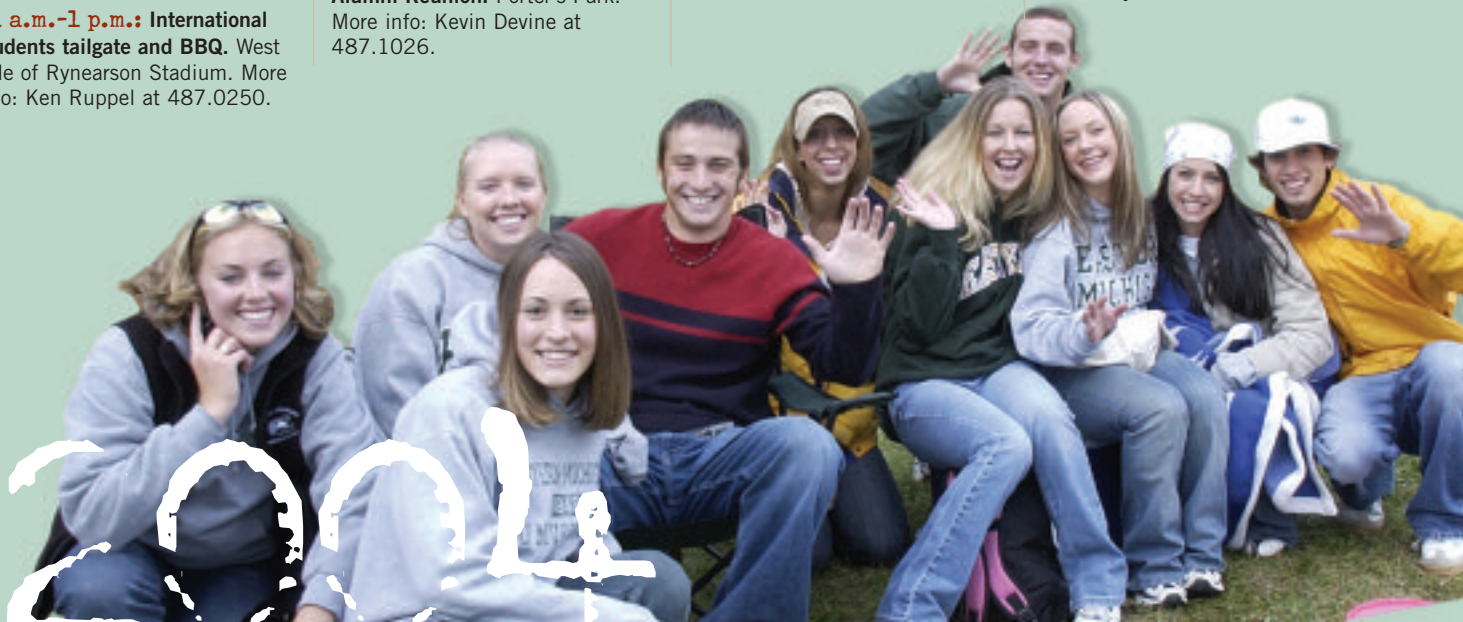
4:30-6:30 p.m.: Baseball Reunion Reception at Paesano's Restaurant. More info: Coach Coryell at 487.0315.

7 p.m.: EMU women's volleyball vs. CMU. Bowen Field House.

8 p.m.: In concert: Fat Joe and The Terror Squad and Slum Village. Convocation Center. Tickets: 487.2282 or online at www.emich.edu/convocation.

9 p.m.-1 a.m.: EMU Black Alumni Chapter Homecoming After Set. Featuring live jazz, dancing at Eagle Crest Golf Clubhouse. Tickets \$20 in advance. More info: George Eason at 313.657.6050 or georgeeason@sbcglobal.net.

Sunday, 1 p.m.: EMU women's soccer vs. Northern Illinois University. Free. EMU soccer field.



FROM THE DESK OF ...


**LINDA
PRITCHARD**

DEAN, ARTS AND SCIENCES

On the march

The College of Arts and Sciences bustles with activity and I am proud to lead it.

We can point to many signs of progress, but these recent notable achievements stand out:

- We are working on broadcasting a common message—"Where a liberating education opens doors to the future"—on our recently remodeled Web site and in new printed materials.

- We are coming off our best fundraising year ever as well as a successful period of applying for and receiving federal research grants.

- We've started our exciting master's-level program in bioinformatics, which fuses the fields of information technology and molecular biology. Building on that collaborative achievement, we are working on another interdisciplinary program, this one in language technology and computational linguistics.

- And, as always, at the College of Arts and Sciences, we are looking forward to the Undergraduate Symposium, which marks its 25th anniversary this winter semester (see related story on this page).

Personnel changes give us important opportunities, at the same time we mourn the loss of valued comrades.

Fifteen new faculty in nine departments join us this fall, 50 percent more than a year ago. Twenty-three faculty took advantage of the University's retirement incentive. While we no longer have their important service, we have been approved this year for 23 new searches in 14 departments.

The college recently appointed two associate deans: Robert Neely (who served as an interim last year) and Laura George, who is filling the position left by Margot Duley.

I hope you take the time to visit EMU again soon. Until then, you can drop me a line at linda.pritchard@emich.edu.

Visit us online >
www.emich.edu/public/art_sci

Student recitals
are helping to
enliven the
Symposiums
every year.



Nurturing potential

Celebrating its 25th > anniversary this year, the 2005 Undergraduate Symposium will again proudly feature student research projects and creative endeavors across all disciplines.

The College of Arts and Sciences at EMU has hosted the annual tradition since the first event in 1981. Symposium XXV will be April 5, 2005.

"The Undergraduate Symposium continues to symbolize all that the collegiate experience should strive to be," said Linda Pritchard, dean of the college. "There's the reach for excellence by students, the collaboration with faculty, the formal presentation

of research and creative projects, and yes, the celebratory nature of the day itself."

Since the second Undergraduate Symposium, a keynote speaker has been invited to the culminating luncheon. Among the event's distinguished keynote speakers: Anthony W. England (1989), former NASA astronaut; David Adamany (1993), past president and professor of law and political science at Wayne State University; Blenda

Wilson (1995), president of California State University at Northridge; Rodney Slater (1996), former Secretary of Transportation in the Clinton administration and a 1977 EMU graduate; Fiona Wood (2003), director and chief medical officer of clinical cell culture from Perth, Australia; and Percy Mangoela (2004), former United Nations ambassador for the Kingdom of Lesotho.

The Symposium has provided a venue for more than 2,500 students to showcase outstanding academic projects under the direction of 600-plus faculty mentors. The first Symposium featured 17 students and 19 faculty sponsors. By contrast, Symposium XXIV on March 26, 2004, provided an opportunity for 207 students to present work through 125 oral presentations and 37 poster displays.

"The experience is one that often influences the direction students take in their respective fields once they complete their undergraduate degree program," said Dennis Beagan, a planning committee member since 1983 and an event chair for more than 20 events.

Students see the value as well. "The possibility of being honored to present my work to my colleague and peers, as well as the faculty of my department and college, added a new level of excitement to my work in the laboratory," said Jennifer Stephens, representing the Department of Chemistry and a 2004 recipient of the Barry A. Fish Undergraduate Symposium Scholarship.

BY THE NUMBERS

25

Number of years EMU has presented the Undergraduate Symposium. The first event featured 17 students; in 2004, 207 participated.

Dean Mielke sees great opportunities to build on the college's strong foundations.



David E. Mielke > joined EMU July 1. The new College of Business dean has a doctorate in accounting and strong business-community experience. Here is his welcome address to alumni:

Change brings new opportunities. As the new dean for the College of Business, I see great opportunities to build on our strong foundation; to develop our competitive advantages to ensure distinctiveness; to attract the best students; and to eventually attain national visibility.

This foundation and its strength are based on the faculty and the quality academic programs they deliver. You can be assured that they are as committed as ever to our students and to the academic mission of Eastern Michigan University.

As the new dean, in my first few months I will:

- Work with the faculty to increase opportunities for our students. This includes international initiatives, student internships and new programs.
- Expand our interaction with and service to the busi-

"I am anxious to meet you and to develop new alumni initiatives."

ness community. Our new "Professional Education Center" will offer, in our tradition, practically-oriented education to meet the challenging and changing business environment of working professionals. This includes tailored corporate degree programs, certificate learning and management/executive education.

- Practice continuous improvement for teaching and degree programs. As we progress, the value of your degree will be enhanced.
- Increase external funding for the College of Business. Given the condition of the state's budget, external

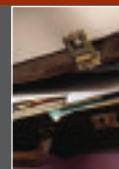
resources must play an increasing role for our success. We will "kick off" the Great Teachers Scholarship campaign with a dedicated group of our alumni leading the charge.

You may know that the University has received a lot of publicity and the president resigned this summer. This will not interrupt our progress, change our commitment to deliver quality education or alter our plans to reach the "next level."

I am anxious to meet you and to develop new alumni initiatives. Please let me know what's important to you. I look forward to seeing you at alumni events planned for fall. Mark your calendar for a reception before Homecoming Oct. 2.

In the meantime, please call, e-mail or stop by to see me or one of your favorite faculty members. You can reach me via e-mail on campus at david.mielke@emich.edu or by calling my office at 734.487.4140. You are always welcomed here.

AACSB ACCREDITED



BUSINESS BRIEFS

NEWS FROM THE OWEN BUILDING

Fraud squad

Forty EMU students became honorary IRS agents April 2 as part of the University's first Fraud Investigation Day at the College of Business.

EMU is partnering with the IRS to provide its students with increased job options and to assist the IRS in recruiting future agents. Stephen Moore, an IRS agent, said 2004 should be a big year for employment. The agency has plans to hire about 500 agents nationwide to conduct criminal investigation. The Fraud Investigation Day was co-sponsored by the IRS and the Michigan Association of Certified Public Accountants.

"Students have a great opportunity to learn what a fraud investigator does. It's exciting to see all the diverse career opportunities out there for an accountant," said Dan Brickner, an assistant professor in EMU's Department of Accounting and Finance.

Best practices

Alyson Huntington-Jones of Masco Corporation was presented with the Merlanti Ethics Best Practices Award at the College of Business' 2004 Honors Banquet. The Ernest and Jeanne Merlanti Ethics Initiative supports the award, which is open to area businesses to recognize corporate social responsibility programs and ethical leadership. The Merlanti Scholars, 15 academically strong undergraduate students from a variety of majors, were in charge of designing a formal nomination procedure and administering an ethics best-practices competition to recognize a regional business person for valuable contributions to the field. The students also handled publicity, the selection criteria, careful review of applications and conducted interviews of the finalists.

Visit us online >
www.cob.emich.edu

FROM THE DESK OF ...



ALANE STARKO

INTERIM DEAN, EDUCATION

Fresh starts

One of the things I like best about Eastern is the way we stand firmly connected to both the past and the future. Eastern has been a leader in professional education for more than 150 years. More immediately, we stand on the shoulders of Jerry Robbins, whose leadership as dean brought us through the joys and struggles of phenomenal growth, emerging new technologies, a new building and the chance to work together as a college in one facility.

We continue to develop at the forefront of our rapidly changing field. This year, with the help of Porter Chair Joyce Epstein, we will be focusing on the ways we prepare all education professionals to collaborate with families and communities.

It is a time of change. We enter 2004-05 with a new interim dean, a new associate dean and a new college structure. On July 1, I assumed the position of interim dean and Virginia Harder began her role as associate dean in the College of Education Office of Academic Services. Donald Bennion has stepped in as interim department head in the Department of Teacher Education.

The college itself also has changed. The Department of Health, Physical Education, Recreation and Dance is no longer here. It was reconfigured in the College of Health and Human Services. Our remaining three departments—Teacher Education, Special Education and Leadership and Counseling—come together with the potential for increased focus and collaboration around all aspects of education.

It is an exciting time to be in education, especially at Eastern Michigan University. We look forward to hearing from our alumni. Your eyes and ears bring us valuable lessons from the classrooms of the country. I look forward to shaping the future together.

Visit us online >

www.emich.edu/education

Robbins started teaching in 1960 in Clinton, Ark.



Class act departs

After 13 years > of dedicated service, Jerry Robbins has retired as dean of the College of Education. He joined the Eastern Michigan University family in 1991.

During his tenure as dean, the College of Education has experienced an amazing rate of growth and sustained itself as the largest producer of education personnel in the country.

That quality was again corroborated this summer, when Eastern Michigan University scored extremely well against the state's 31 other teacher preparation institutions on state tests required for certification. EMU ranked as high or high-

er than 29 out of the 32 state teacher preparation institutions for mastery of information (initial pass rate) and second in the overall number of test-takers.

"Our students have done exceptionally well in the basic skills tests, and in nearly all fields we exceed the statewide norms for specific subject areas," said Paul Schollaert, EMU provost and vice president for academic affairs. "These results

confirm what we know very well on this campus—Eastern Michigan is the state's leader in the preparation of high quality teachers for our public schools."

Robbins' career began some 40 years ago. He received his master's and doctorate degrees in educational administration from the University of Arkansas and his undergraduate degree in mathematics from Hendrix College. His love for education took him from Arkansas to Georgia and then finally to Ypsilanti.

When asked to reflect upon his proudest accomplishments during his tenure, Robbins often mentions the remodeling of the John W. Porter College of Education Building, which serves as home for all units associated with the college. The building provides advanced technology opportunities for students and faculty.

During Robbins' tenure, the college has remained dedicated to preserving the strong history and tradition of our education programs while meeting the immediate needs of new teachers in our country.

He may return to EMU as a full- or part-time faculty member with the Educational Leadership program within the Department of Leadership and Counseling.

Alane Starko is serving as interim dean. She recently served as head of the Department of Teacher Education, one of the university's largest departments. A national search for a new dean will be conducted this academic year.

BY THE NUMBERS

1

Eastern Michigan University is the largest producer of teacher personnel - teachers, administrators, school counselors - in the United States.

Dean Thomas in the
Everett L. Marshall
Building atrium.



Jeanne Thomas > joined EMU July 1. The new College of Health and Human Services (CHHS) dean has a doctorate in life-span psychology. Here is her welcome address to alumni:

Greetings! I view our college as a community in which all work to improve the quality of life for our students, faculty, staff, alumni and friends, and for our region.

Our students are preparing for promising careers in health care and health education, fitness and human performance, and social services. These fields enjoy ever-expanding employment opportunities; our graduates can look forward to intellectual growth and professional ad-

vancement throughout their careers. Our faculty and staff are enriched by helping students develop into professionals, and by their own dynamic contributions via research and service.

Remaining connected with our alumni is crucial for CHHS. We need our graduates' advice about our programs so we can improve on an ongoing basis. And we hope that CHHS alumni will look to EMU when they are ready for continuing profes-

sional education.

Perhaps the most promising opportunities for CHHS are partnerships with the community. There are no better opportunities for students to learn than via community-based research and clinical education. But at least as important are the benefits to the community through clients served, patients treated and relationships established. When senior centers, clinics, hospitals and schools become our classrooms, everyone benefits. Our Boulevard Temple project in Detroit is a superb example.

I look forward to meeting you and learning about your visions for the college.

Motown care

This fall, CHHS students will have the chance to practice their skills in an innovative care setting. They will be part of a model for coordinated interdisciplinary care built around the individual and his or her environment.

For many years, Professors Elizabeth Schuster and Sylvia Sims Gray have believed that in order to successfully address the needs of senior citizens residing in rehabilitation and long-term care, care givers and health practitioners must respect the residents and understand the environment that shapes their values and lives. That philosophy underlies the partnership they are coordinating between EMU and Boulevard Temple in Detroit to create a model of interdisciplinary health care. They expect the model to have a significant impact on the concept of culturally-competent practice.

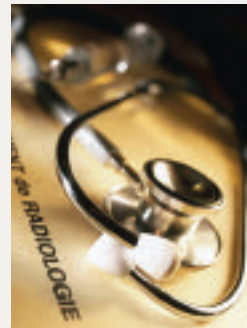
Boulevard Temple provides short-term rehabilitation services and long-term care options to African-American residents

who have limited resources. For the past year, Gray and Schuster have been working with Boulevard Temple staff to build a coordinated interdisciplinary team.

They also have set the groundwork for involvement of families and the surrounding community in initiatives that will benefit the health and well-being of the neighborhood.

This fall, EMU students step in. They will be involved in building innovative health care teams reflective of the needs of the community being served at Boulevard Temple.

Student interns will receive orientation about the model and related theories and experience a day of "immersion" in Detroit history and culture. This is designed to help them understand the impact of racism and Detroit's uneven economic development on the lives of African-American seniors. As interns, they will work with residents whose complicated circumstances and conditions will provide extensive experience in a short time.



Nursing skills Go high tech

Traditionally, nursing > students spend hours in the Nursing Skills Lab learning basic procedures. Now, learning those skills is a bit easier. EMU School of Nursing faculty have produced a series of DVDs demonstrating those skills. Students may play the DVDs in the lab next to their practice manikin; purchase copies for study at home, or visit the department's Web site for more information. "Use of the DVDs ensures a consistent model for students to follow," said Barb Scheffer, the professor who pioneered the project.



Visit us online >

www.emich.edu/chhs

FROM THE DESK OF ...



JOHN DUGGER

DEAN, TECHNOLOGY

25 and counting

Hello to all our alumni and friends! As dean of the College of Technology, I want to thank you for your support and encourage you to reestablish your connection with us by visiting campus. Your participation and input are instrumental in meeting our goal of continuous improvement on behalf of our students.

Established in 1980 to address 21st century educational challenges, the College of Technology (COT) boasts two schools (the School of Engineering Technology and the School of Technology Studies) and a Department of Military Science and Leadership, along with a Research and Development Unit that houses four centers and institutes.

We currently offer 27 undergraduate programs, 10 master's programs and a new Ph.D. in Technology as we strive to expand Eastern's presence both regionally and globally.



As we prepare to celebrate the college's 25th anniversary in 2005, a number of special events are planned to commemorate our progress and accomplishments, as well as to focus on our future. And for the second year, a Homecoming brunch at the Bruce T. Halle Library is planned for Oct. 2 to celebrate our alumni, friends and associates. We hope to see you there!

On behalf of the COT faculty and staff, we congratulate you on your successes and appreciate your continuing support. Please contact us at 734.487.0354 for further information. Go Green!

Visit us online >
cot.emich.edu



EMU graduate Deborah Hense performs work inside the Coatings Research Institute.

Project: Progress

As with the fields > of technology and engineering, the College of Technology is rapidly evolving to meet the latest academic needs while setting new benchmarks for future progress.

Here is a summary of some of the college's more recent accomplishments:

- Launched new programs in aviation flight technology, computer engineering technology and manufacturing engineering technology.
- Absorbed several programs transferred from the College of Health and Human Services: interior design; apparel, textiles and merchandising; and hotel restaurant management graduate and

undergraduate programs. The transfers were made based on determinations that some existing departments and programs should be restructured and aligned more closely with the mission of a different college.

- Selected members of the first cohort for the Ph.D. in Technology program. The cohort enrolls this fall. The college also hired the program's first director, Mary Brake, and added a faculty

member, Sema Kalaian, to teach some of the new courses.

- Received reaccreditation from the American Council on Construction Education, the American Bar Association, and the National Association of Industrial Technology.

- Created the Center of Product Research and Development and the Center for Regional and National Security. The security center's mission is to support citizenship through excellence and innovation in teaching, consulting and research.

- Formed a unit to house the four centers and institutes within the college.

- Helped launch the Washtenaw County/EMU Legal Resource Center in collaboration with Washtenaw County, the Washtenaw County Bar Association, Washtenaw County Unified Trial Court and Legal Services of South Central Michigan.

The center opens Sept. 7 and will dispense legal self-help information to individuals who don't know where to turn for legal help.

A grand opening ceremony is scheduled Oct. 21 for the center, which is near the main courthouse in Ann Arbor at 110 North Main St., Suite 100.

- Reorganized the college, an effort that yielded a new School of Engineering Technology and the School of Technology Studies. The School of Engineering Technology will be led by Bob Lahidji. Morell Boone will serve as interim head of the School of Technology Studies.

BY THE NUMBERS

27

The number of undergraduate programs offered in the College of Technology, from aviation management to vocational education.



Jeff Genyk was born in Ann Arbor and grew up in Milan.

High hopes

There will be > a new attitude on the Eastern Michigan University football team when the Eagles take the field for the 2004 season. The program has undergone some major changes.

It started at the top with the hiring of Jeff Genyk as head coach. Genyk was named head man Dec. 2 after spending 12 years as an assistant coach in the program at Northwestern University.

Genyk was hired to take over an EMU program that suffered through four straight losing seasons, and the first thing that the new coach accomplished was to bring a huge dose of enthusiasm to

the program.

"We're going to host and win a Mid-American Conference Championship," Genyk said. "Every player must believe in the concept of continuous improvement."

The team and new coaching staff had their first opportunity to implement new systems during 2004 spring drills. The result was a coaching staff and a team that learned to practice together,

building trust in one another and building confidence as a team to compete at the highest level of college football.

"I spent 10 years in the business world and 12 years as a football coach preparing for this opportunity," Coach Genyk said. "Everyone I met during the interview process had a passion and desire to have a successful program here at Eastern Michigan University, and they are really ready to win."

The new Genyk philosophy premieres Thursday, Sept. 2, when the Eagles open the season at home against Buffalo. Game time is 7 p.m.

FROM THE DESK OF ...



**DAVE
DILES**

ATHLETICS DIRECTOR

Teamwork

The Department of Intercollegiate Athletics enjoyed tremendous success during the 2003-04 academic year. The women's basketball team captured the Mid-American Conference Championship and nearly defeated highly-ranked Boston College in the NCAA tournament.

Similarly, women's soccer won another MAC title, the men's swimming team maintained their hold on the MAC Championship with a dominating performance at the Jones Natatorium and congratulations are due for the men's indoor track team for yet another conference title.

Several individual student-athletes performed exceedingly well nationally. Jordan Desilets won an NCAA title in the steeplecase, and Brian Bixler earned several First-Team All-American honors for the baseball program. Brian was selected in the second round of the baseball draft by the Pittsburgh Pirates and has launched a promising professional career.

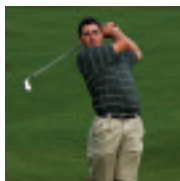
As we look forward to the 2004-05 academic year, our department is most proud of our commitment to representing EMU with distinction. Please join us in support of our student-athletes, teams and coaches throughout the 2004-05 year.

Visit us online >

www.emich.edu/goeagles

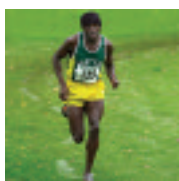
Fall Sports

A look at the other Eagle teams and when their seasons begin



Golf

Women: Sept. 1
Men: Sept. 2



Cross country

Women: Sept. 1
Men: Sept. 2



Rowing

Women: Sept. 1



Soccer

Women: Sept. 1



Swimming & Diving

Women: Sept. 1
Men: Sept. 2



Tennis

Women: Sept. 1



Volleyball

Women: Sept. 1

CLASS NOTES



Made in Michigan

More than 88,500 EMU graduates - more than 75 percent of all our U.S. alumni - live in Michigan. In recognition of that fact, all locations for hometowns and employers for alumni listed in Class Notes are in Michigan, unless otherwise indicated.

'40s

GORDON RAYMOND (B.S. '43) is 91 and living in St. Peters, a suburb of St. Louis, Mo. He spent most of his teaching years at Mary Institute and St. Louis Country Day School.

CHARLES L. REULE (B.S. '49) lives in Albuquerque, N.M. He received seven overdue medals from the U.S. Army Department of Records recognizing his service in World War II.


'50s

NEIL COLLARD (B.S. '50) retired from teaching

business education in 1986. In his spare time, he is known as the "Voice of the Vikings" for track and volleyball games at Marysville Public Schools.

JAMES M. GARFIELD (B.A. '51, M.A. '56, S.P.A. '68) is president of the Flora-Bama Chapter of Michigan Retired School Personnel for the 2004-2005 school year. He lives in Pensacola, Fla.

RICHARD SLAKER (B.S. '51) is in the travel business after retiring from teaching, counseling and being a school principal. He is president of the Orange County/San Diego Caribbean Tourism Organization and the western regional director of the CTO Chapter.

GLENN ALLEN GOERKE (B.A. '52, M.A. '55) was awarded NASA's Distinguished Public Service Medal in recognition of his leadership in higher education and his accomplishments in partnering with business and industry in Houston.  (Page 25)

ROBERT C. PARKS (B.S. '52) retired from coaching track and field at EMU in 2000. He since has been an assistant coach for track and field at high schools in Florida and Michigan.

ROSEMARY WILLIAMSON TOWNSEND (B.S. '54) retired to Florida after teaching around the world and recently traveled to Bulgaria, Brazil and Mexico with her husband, Ted.

FLORENCE ROWE (B.S. '57) lives in Flushing Township. Rowe spent nearly 50 years as a teacher and recently attended a high school reunion at Flushing Community Schools.


LUCY PARKER (B.S. '58, M.S. '66) enjoyed her winter in Florida playing in a senior softball tournament. She is a member of the EMU emeritus faculty.

'60s


TAYLOR JACOBSEN (B.S. '60) lives in Saline

with wife Charlene, an EMU alumna. Their home and gardens, Saline Mills, were recently featured in a wedding issue of Martha Stewart's Living magazine.

JOAN HILL (B.S. '61) retired after a long teaching career. Hill spent her final years with developmentally challenged and disabled students at a St. Clair County charter school.

W. CURT BOLLER (B.S. '62, M.S. '69) is an assistant county executive for Wayne County, and oversees the departments of public service and environment.  (Page 28)

LAURA SCHULTZ (B.S. '62) was named to the Monroe County Community College Alumni Association Board of Directors. In 1998, she was EMU's Distinguished BSW Alumna of the Year winner.

CLAUDIA WASIK (B.S. '62), an EMU emeritus faculty member, resides in Ypsilanti.  (Page 27)

JERRY SVENDOR (B.B.A. '64, M.B.A. '68) was promoted to vice president of academic services for West Shore Community College in Ludington. He was vice president of arts and sciences.

MICHELE "MITZI" MANNING (B.S. '65) retired from the Marine Corps as a colonel in 1999. She graduated from Wesley Theological Seminary and, in June, was commissioned a probationary deacon at the 2004 Virginia annual conference of the United Methodist Church.

PATRECIA ROSS (B.A. '66) was named "Citizen of the Year" by the Marlette Area Chamber of Commerce for her involvement in the community.

FRED SHAW (B.S. '66, M.S. '75) is retiring after 33 years as a teacher and coach with the East China School District.

HOWARD WEBSTER (B.S. '66, M.A. '69) chairs the special education department and supervises 15 special education teachers for Clarkston Community Schools.

THOMAS J. RUNDQUIST (B.S. '67, MA. '69, CE '77) of Nova Counseling Associates Inc. is on Business Wire's database of expert sources. He has 30 years of experience counseling and writing on social issues.

ROBERT L. CLIFTON (M.A. '68) retired after 23 years as dean of student affairs at the Medical College of Virginia campus of Virginia Commonwealth University.

MARIANNE K. MARTIN (B.S. '68) releases her sixth novel, "Under the Witness Tree," in September by Bywater Books.

HAROLD SIMONS (B.S. '68) is a physical education teacher and men's golf coach at Huron High School for Ann Arbor Public Schools.

BARBARA A. BROWN (M.A. '69) is retiring after 31 years of teaching, including 29 with the Chelsea Community Schools.

SANDRA O'KEY RICHARDSON (B.S. '69) retired after 26 years of teaching with the San Luis Coastal Unified Schools in San Luis Obispo, Calif.

GUIDE TO DEGREES

B.A.	Bachelor of arts
B.B.A.	Bachelor of business administration
B.F.A.	Bachelor of fine arts
B.M.E.	Bachelor of music education
B.S.	Bachelor of science
H.H.L.	Doctor of humane letters
H.L.W.	Doctor of law
H.S.C.	Doctor of science
M.A.	Master of arts
M.B.A.	Master of business administration
M.L.S.	Master of liberal studies
M.M.E.	Master of music education
M.P.A.	Master of public administration
M.S.	Master of science
M.S.W.	Master of social work
S.P.A.	Specialist of arts

CLASS NOTES

'70s **MARV DICK (B.S. '70, M.A. '74)** is the new superintendent for Ida Public Schools. He was hired in April from seven candidates.

CHARLENE JACOBSEN (B.A.E. '70, E.L.P.U. '70) is an art teacher at Pleasane Ridge Elementary for Saline Area Schools. Her home was recently featured on the Annual Garden Walk of the Women's National Farm and Garden Association-Ann Arbor Branch.

JOE NUZZO (M.A. '70) teaches technology classes at Lincoln High School for Lincoln Consolidated Schools. Nuzzo recently won the International Technology Education Association's 2004 award for program excellence.


JOHN M. BARACY (B.B.A. '71, M.A. '83) is the new superintendent of Scottsdale Unified District in Scottsdale, Ariz.

FRANCES DECKARD (B.S. '71) was honored by the Washtenaw Community College Foundation's Women's Council for her volunteering, position as a role model and community involvement.

ANDREW M. EGGAN (B.B.A. '71) received the distinguished service award from the Ypsilanti Chamber of Commerce. Eggan has been an attorney with the firm of Pear Sperling Eggan & Daniels P.C. since 1975.

GAIL FAULKNER (B.S. '71, M.A. '77) is the transition coordinator at the Michigan School for the Deaf in Flint.

DON FREDERICK (C.E. '71, M.S. '75) announced his retirement as South Lake High School athletic director after 34 years with South Lake Schools in St. Clair Shores.

MARILYN JANIK (B.S. '71) retired after teaching at Dearborn Public Schools. She lives in Royal Oak.  (Page 27)

JACKIE JENKINS-SCOTT (B.S. '71) was named president of Wheelock College in Boston and began her duties in July.

STEPHEN H. JORDAN (B.S. '71) was named one of eight Pennsylvania Super Lawyers, a distinction that recognizes the top 5 percent of lawyers in Pennsylvania, by Law and Politics magazine and Philadelphia magazine.

DARYL PRICE (B.S. '71) teaches social studies for Baldwin Community Schools.

KEN BURDZINSKI (B.B.A. '72) was the co-recipient of the 2003 International Outstanding Business Officer Award given by the Community College Business Officers.

NANCY BERKOMPAS (M.A. '72) was honored by the Alpha Iota Chapter of Delta Kappa Gamma, an honors society of women educators. Berkompas is the superintendent of Rudyard Area Schools.


TIM COGSWELL (B.S. '72, M.A. '78) retired after 31 years of teaching for Pinckney Community Schools. He has been inducted into the Michigan High School

Football Coaches Hall of Fame. He coaches at Brighton High School in Brighton.

MARY GARBARINO (B.S. '72, M.A. '77) is retiring after 32 years of teaching at Huron High School for Huron (New Boston) School District. Garbarino worked 11 years as a vocational support teacher in the fields of automotive, machine and drafting technology.

CRYSTAL BARBER (M.A. '73) will be lending her writing talents to The Sanilac County News. She will be contributing to the Opinion page for the next year.

BRIAN CIESIELCZYK (B.S. '73), a former math teacher with Ironwood Area Schools, was invited in June to send off this year's graduates as the keynote speaker.

FREDERICK COHEN (B.S. '73) received a plaque from the Michigan High School Athletic Association honoring his 30 years of experience of basketball officiating at the high school and collegiate level. Cohen is in his 29th year of teaching for Detroit Public Schools.  (Page 28)

PATRICIA GAKSTATTER (M.A. '74) was honored as The Detroit News "Teacher of the Week." She teaches fourth grade for Armada Area Schools.



Clockwise from upper left: Barbara Porter (M.B.A. '81), Laurie Streling (B.A. '82), Glenn Allen Georke (B.A. '52, M.A. '55) and Kelly (Bruner) Lambert (M.A. '92).

ALLEN GREEN (B.S. '74, M.A. '75) published his first novel in June, "Blind Baseball: A Father's War." The story depicts family relations and domestic law for some fathers in the United States.

CAROLYN LUCADO GRIFFIN (M.A. '74) was a speaker at the Michigan Council of Teachers of English conference and the Michigan Reading Association conference and was nominated for a sixth time for "Who's Who Among America's Teachers." Since 1968, she has taught language arts at Ypsilanti High School.

SCOTTIE GRIFFIN (M.A. '74, C.N.C.E. '76) was named superintendent of Charlottesville City Public Schools in Charlottesville, Va.

SANDRA HARRIS (B.B.E. '74, M.A. '80, E.E.D. '97) was named superintendent of Lincoln Consolidated Schools.

DAVID NICHOLSON (B.S. '74) is planning director for Ypsilanti Township, overseeing plan reviews, zoning administration and special project planning.

MIKE MOURADIAN (B.S. '75, M.A. '81) is a photography - and science teacher at Community High School for Ann Arbor Public Schools. He recently produced several cable access shows for the Ann Arbor community.

CHARLES C. SMITH (M.A. '76) received his doctorate in educational leadership from Oakland University. Smith is the superintendent of Croswell-Lexington Community Schools.

CLASS NOTES SUBMISSION

NOW HEAR THIS:

Do you have news about yourself you want to share with fellow alumni? You can send the update through the mail, but be sure to include your name, address, city/state/zip, e-mail address and telephone number. We'd also like to know the degree you earned and in what year.



Mail to:
Eastern Michigan University
Office for Alumni Relations
1349 S. Huron St., Suite 2
Ypsilanti, MI 48197

Send us your photo, too. We prefer color prints or high-resolution digital color images. For faster delivery, use our online submission form, which can be found at:

www.emich.edu/alumni/association/classnotes

CLASS NOTES

ANN STRESSMAN (B.S. '76)

published her first book, "Parenting Someone Else's Child: The Foster Parents' How-to Manual." Stressman and her husband have fostered more than 100 children.

KATHY ZIBBELL (B.S. '76)

was elected chair of the Monroe County Community College Alumni Association Board of Directors. She is an English teacher at Summerfield High School in Summerfield (Petersburg) Area Schools.

LAURA BARKER (B.S. '77)

hosted a full-day workshop on sensory processing in the brain for the Manistee Intermediate School District. The workshop provided a basic understanding of how sensory techniques create optimal learning environments for children and adults.

NANCY MYERS (B.S. '77,

M.A. '94) retired after 25 years of teaching for the Newaygo Public School District.

ELECTRA STAMELOS (M.F.A.

'77) showcased her newest artwork at an April show in Ann Arbor. This summer, she taught a two-week art course in Italy.

KAREN DEAN (B.S. '78, M.S.

'86) is an author and illustrator in southeastern Michigan. In April, Dean held a promotion-

al singing at the Midland Barnes & Noble for her children's book, "Let's Go To Mackinac Island."

DOTTIE DAVIS (B.S. '78) is a teacher at Huron High School for Ann Arbor Public Schools.



(Page 27)

ARTHUR F. WRIGHT (M.B.A.

'78) is the Brownstown Township supervisor. He is seeking his first full term in August after serving as the chief executive for the township the past two years.

DAVID ZACKS (B.S. '78)

joined the law firm of Ishbia and Gagleard, P.C. in Birmingham as counsel. Zacks concentrates on federal white-collar crime.

LYNN CLEARY (B.M.E. '79,

M.A. '86) received an educational leadership award from the Ypsilanti Area Chamber of Commerce for her work as principal of Lincoln Middle School for Lincoln Consolidated Schools.

LAVERN ROBINSON (M.A.

'79) has been named to the Monroe County Community College Alumni Association Board of Directors. He is the program manager for the Bureau of Juvenile Justice's W.J. Maxey Center in Whitmore Lake.

LUCY TAYLOR (M.A. '79)

returned to ReviewWorks, a Farmington Hills-based company, as the supervisor of vocational rehabilitation services.

'80s

EILEEN BIGGS-LONG (B.S. '80) is the senior human

resources manager with the Seminole County Sheriff's office in Sanford, Fla.

ELENA FARMER (B.F.A. '80)

was named one of the Most Influential African-American Women in Metropolitan Detroit for 2004 by the Women's Informal Network. Farmer is the principal graphic designer for the city of Detroit's communications and creative services department.

KEVIN GREEN (B.S. '80) is executive director of Lansing's Principle Shopping District.

LEE C. LIEN (M.S. '80) is vice president and portfolio manager for the Private Client Group in Birmingham. She manages equity and fixed-income portfolios for clients in Birmingham and Ann Arbor.

ILENE MACDONALD (M.A.

'80) was a principal, teacher and counselor for Algonac Community Schools and Port Huron Schools before becoming director of education services for St. Clair Intermediate Schools.



George Farrell (B.S. '91) is a senior airman in the Air Force and is serving in the Air Force Reserve.

RON VERDONK (B.S. 1980)

is a foreign affairs officer and heads the U.S. Agricultural Trade Office at the U.S. Consulate General, Sao Paulo, Brazil.

BARBARA FREEDMAN (M.A.

'81) is an artist specializing in watermedia in Sun City, Ariz. Her work is on display in Texas, Missouri and Arizona.

SHARON HAMERSCHMIDT

(B.S. '81, M.A. '95) was honored by the Michigan Interscholastic Athletic Administrators Association for her work as an athletic director, physical education teacher and softball coach.

BARBARA PORTER (M.B.A.

'81) is corporate marketing manager for SmithGroup, an architecture, engineering and interior design firm in Detroit.



(Page 25)

THE HON. GREG MATHIS

(B.S. '82) served as the keynote speaker at the Urban League of Flint's annual luncheon in April. Mathis is the star of "The Judge Mathis Show."

LAURIE STRELING (B.A. '82)

was named senior vice president of The Johnson Group, a Chicago-based finance consulting firm. She has more than 25 years experience in telecommunications and public accounting.



(Page 25)

CONNIE JOHNSON-OVERBAY

(B.B.A. '83) was named enforcement coordinator for the Environmental Protection Agency's Region 6 office in Dallas, Tex.

JOHN WILKINS (B.M.E. '84)

directs the University of Michigan alumni pep and Mumford (Detroit Public Schools) High School bands.

spotlight KENT BAILO ('73, '77, '92)

Women's wrestling made its Olympic debut this year, and no one could be happier than Kent Bailo.

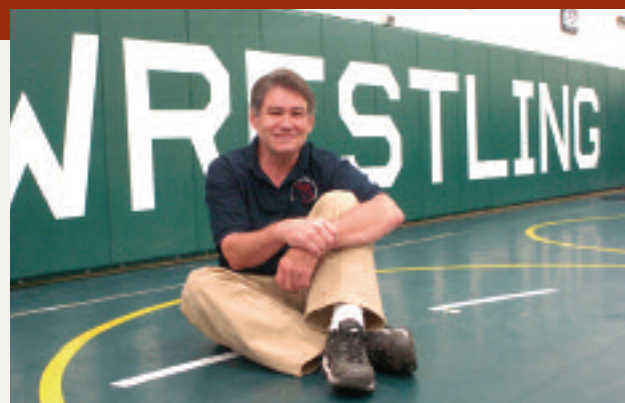
Bailo, who has a bachelor's ('73), master's ('77) and a specialist's degree ('92) from EMU, not to mention 11 majors and minors, is considered the "father" of girls' wrestling nationwide. In 1997, he started the first tournament in Michigan for girls, and a year later, helped form the United States Girls Wrestling Association (USGWA). The

2003 championships had 604 entries.

In fact, three of the four women on the first U.S. women's Olympic team received their first exposure through competing in Bailo's USGWA National Championships.

"The Olympics will make a big difference at the high school level, and it will force college programs to take a look as well," said Bailo, a resident of Ortonville, Mich.

His efforts on behalf of girls' wrestling recently earned him Wrestling USA's "Man of the Year" award.



Bailo helped coach EMU men's wrestling for two years as a graduate assistant.

CLASS NOTES

RICHARD L. BOYCE (B.S. '84) joined the Bank of Lenawee as senior vice president of the investment services group.

PAUL KOEBNICK (B.S. '85) teaches stagecraft, or technical theater, for Singapore American School in Singapore.

EMANUEL SWEIGEL (B.S. '85) received a superior honor award for his contribution to the U.S. Department of State's Public Diplomacy Tradecraft efforts.

GREGORY ADAMUS (M.A. '86) delivered a presentation in Alpena in May on the multiple intelligences theory. He is principal at Alpena High School for Alpena Public Schools.

LINDA SILVER (B.S. '86, M.A. '90) joined the sales team of the real estate offices of Weichert, Realtors - Atkins Presidential.

SANDY BURNS (B.S. '87) was named "Metropark Employee of the Year" by colleagues and supervisors. Burns is park secretary for Lower Huron Metropark.

ALICE CERNIGLIA (M.S. '87) is the Washtenaw County Historical Society's part-time museum director.

ERIC BARNABY (B.S. '87) joined Foote Health System in Jackson as the director of business development.

TIM CLUE (M.A. '87) co-authored "Leaving Iowa," a play performed in March by the Purple Rose Theatre Company in Chelsea.

PAMELA JONES-SEXTON (M.B.A. '87) received the 2004 ATHENA award from the Ypsilanti Area Chamber of Commerce Women's Council for her contribution to business.

JOE PALKA (B.S. '87) accepted an assistant football coaching job at EMU.

JACK WICKENS (B.S. '87, M.A. '90, M.A. '92) is a counselor at Meads Mill Middle School in Northville Public Schools. He coaches basketball, cross-country and track.

ROBERT DURECKA (B.S. '88) is principal at Central Middle School in Port Huron Schools. He was the assistant principal of Port Huron High School.

JAMES F. MCGAUGH (B.S. '88) is president and owner of ADAPT Consulting firm in East Lansing.

BARBARA ROBERTSON (B.A. '88, M.A. '95) volunteers as the field-trip coordinator at Ann Arbor Open School at Mack, part of Ann Arbor Public Schools. She also leads monthly support meetings at La Leche League of Ann Arbor.

JOE ROSSI (S.P.A. '88) is retiring after serving as the Saline High School principal and the director of operations.

JEFFREY ALDERMAN (B.S. '89) was named the executive director of the Kansas State Bar. Alderman previously served as the executive director of the Camden County Bar Association in New Jersey.

PHIL OLLILA (B.S. '89) accepted a position with Ingram Book Group in Nashville, Tenn., as the vice president of publisher services.


ALLEN SELLINGER (B.S. '89) is a senior scientist at the Institute of Materials Research and Engineering in Singapore.

'90s **JEFFREY BRADLEY (M.S. '90)** received the Presidential

Award For Mathematics and Science Teaching. He was one of 95 teachers nationwide and only one of two from Michigan. Bradley teaches at Slauson Middle School for Ann Arbor Public Schools.

AMY BODRIE (M.F.A. '90) joined the staff of the Visiting Nurse Association/Covenant HealthCare in Saginaw as the community relations specialist. She will be in charge of the marketing, public relations and businesses development.

JAMI BRONSON (B.S. '90) is the new principal at Mill Creek Middle School in Dexter Community Schools. Bronson has been with the district for her entire career.

GEORGE FARRELL (B.S. '91) is a senior airman in the Air Force and is serving in the Air Force Reserve. He recently graduated from the Air Force supplier apprentice course at the Lackland Air Force Base in Texas.  (Page 26)

PATRICIA FAIR (M.A. '91) is a middle school teacher at Our Lady of Good Counsel in Plymouth. The Engineering Society of Detroit Affiliate Council recently selected her as Science Teacher of the Year.

WILLIAM HAUG (M.A. '90) is retiring after 14 years as the superintendent of Schoolcraft Community Schools.

JOHN KOERNKE (B.S. '90) is president of Football Quest International, an Ann Arbor-based non-profit organization and the president of America's Football League, which begins its inaugural season in 2006.

JEFFREY MOODY (B.B.A. '90) is controller and manager for The Center for Physical Rehabilitation. He is also a Sunday school teacher at the Church of the Dunes Methodist Church.

YVONNE MOODY (B.F.A. '91) announced the merger of her company, Moody Creative LLC, with Fine Line Creative Inc. She will take over as the marketing firm's creative director.

CHRISTINE O'CALLAGHAN (B.S. '91) is downtown coordinator for Midland. She was marketing coordinator for Coldwell Banker Commercial in Denver, Colo.



GIRLS OF SUMMER From left: Dottie Davis (B.S. '78), Marilyn Janik (B.S. '71) and Claudia Wasik (B.S. '62).

CYDNEY RAX (B.S. '91) published her first novel, "My Daughter's Boyfriend," in June.

KAREN SUSALLA (B.B.A. '91) moved to Sarasota, Fla., and established Indigo Blue LLC, a marketing and public relations company.

LEONARD WOODSIDE (B.S. '91) is the Anchor Bay School District superintendent. His excellence in maintaining relationships with the school and community earned him a positive review on his annual performance appraisal.

HENRY BOWMAN (B.S. '92) is the director of the parks and recreation department for the city of Warren.

KELLY (BRUNER) LAMBERT (M.A. '92) joined NET-WORKS Productions as music director/conductor for two of their Broadway touring shows. Last year, she traveled with the touring company of "Cinderella" and "Suessical the Musical."  (Page 25)

KURT LINDEMANN (B.S. '92, M.A. '97) earned a top paper award at the February 2004 Western States Communication Association in Albuquerque, N.M., and a top paper

award in the disability issues division and a top four paper award in performance studies at the November 2004 National Communication Association in Chicago.

SHANDRA SHELLEY (B.S. '92) is a supervisor with the Department of Justice, Executive Office for Immigration Review, in Detroit.

THOMAS K. COGSWELL (B.B.A. '93) is the city administrator for Rockwood and is working on his master's degree at EMU.

CLASS NOTES



From left: Frederick Cohen (B.S. '73), Beth (Gwaltney) Allie (M.S. '98), and W. Curt Boller (B.S. '62, M.S. '69).

JOE SAYER (B.S. '93, MLS '95) joined the Ann Arbor office of Real Estate One. He is also a state-licensed residential builder and a journeyman electrician.

FERN WARD (B.S. '93) earned her Juris Doctorate degree from George Mason University School of Law. She is the director of contracts for IntelliDyne-L.L.C. in Falls Church, Va.

JEFF WELLER (B.S. '93) was named 'The Detroit News' "Teacher of the Week." He teaches science for Wyandotte City Schools.

MARK BRENTON (E.L.P.U. '94, M.A. '00) is principal of Mayville Elementary School, part of Mayville Community Schools. He was the instructional technology coordinator for Plymouth-Canton Community Schools.

KOLIN CONVERTINI (B.S. '94) is operations manager for Muskegon-based homebuilder Galloway Homes.

SCOTT FRUSH (B.B.A. '94) authored "Optimal Investing: How to Protect and Grow Your Wealth with Asset Allocation." The book is a how-to guide for new investors and is published by Marshall Rand Publishing.

MAJ. EDWARD STRAUB III (B.S. '94) was promoted to major in the Marine Corps and is stationed in Virginia.

CAPT. DAVE COLES, USN (M.S. '95) was appointed chief of staff of the naval service training command at Great Lakes, Ill.

STACIE RICKER-GREENIA (B.M.E. '95) was named Elementary School Teacher of the Year by the Bridgeport-Spaulding Community Schools. She teaches music at the K-4 level.

T. ROSE ROANE (M.A. '95) celebrated the one-year anniversary of her franchise business, Contours Express Ladies Only Fitness Studio, in Ann Arbor. Roane owns the business with her three sisters.

MATTHEW YOUNG (S.E.P.U. '95) was promoted to assistant principal at Bemis Junior High School for Utica Community (Sterling Heights) Schools. Young was an administrative intern at the school.

LISA DUMAN (M.A. '96) is principal of Chippewa Middle School, part of Port Huron Area Schools. She spent the last four years as assistant principal.

JANE IRWIN (B.F.A. '96) released a graphic novel in 2003 and has given a workshop on comic illustration through Chelsea Community Education in Chelsea.

JENNIFER POWELL (P.F.C.E. '96, M.A. '96) has been teaching with St. Ignace Area Schools for four years.

TODD THOMASSON (B.S. '96) is the supervisor of the radiation oncology department in the Cancer Center at Saint Mary's Mercy Medical Center in Grand Rapids. Thomasson and his wife were on Wheel of Fortune's "Sweethearts Week" and won nearly \$43,000. The show was taped in Phoenix in January and aired during the week of Valentine's Day.

MICHAEL DI LAURA (B.S. '97) joined Jaffe, Raitt, Heuer & Weiss P.C. as an associate in the firm's bankruptcy group. Di Laura specializes in bankruptcy, insolvency and complex commercial litigation.

JODY GIELINSKI (B.S. '97) was named principal-director of the South and West Washtenaw Consortium. The consortium provides career and technical courses for juniors and seniors in Washtenaw County-area school districts.

BETH (GWALTNEY) ALLIE (M.S. '98) is owner of Baby Travels Equipment Renter, which provides rental equipment for parents with young children who do not have the means to transport heavy cribs and high chairs when traveling or visiting in the Metro-Detroit area.  (Page 28)

DONNA MCKNEELEN (B.S. '98) graduated with a juris doctorate from Thomas M. Cooley Law School in 2002. McKneelen is employed full-time as the staff attorney with the Cooley Innocence Project and is an adjunct professor teaching Introduction to Law I and II.

SGT. JEREMIAH BOYD (B.S. '99) is serving in the 7th Cavalry in Iraq.

KARIN HAMLING (M.S.W. '99) was appointed by the Family Independence Agency as director of the FIA for Alcona and Iosco counties. Previously, Hamling worked as the program manager for children's services for the FIA in Bay County.

'00s **KIMBERLY DEVORE (B.B.A. '00)** joined the Ann Arbor office of Real Estate One in April.

ANGULNETTE JENERETTE (M.S.W. '00) is the supervisor in charge of the food assistance payment accuracy program in Detroit for the Michigan Family Independence Agency.

MARCUS KAEMMING (M.A. '00) is principal of North Creek Elementary School, part of Chelsea Community Schools.

ADRIANA RODRIGUEZ (B.A. '00) is an accountant at BKR Dupuis and Ryden in Flint and is working on a master's degree.

JAMES TODD BELCIK (B.S. '01) is a research sonographer at the University of Virginia's School of Medicine, Department of Internal Medicine, Cardiovascular Division. Belcik is a founding member and past president of the Greater Houston Society of Echocardiography, a Fellow of the American Society of

Echocardiography (ASE) and the recipient of the 2004 ASE Sonographer Research Award

ELIZABETH DANIELS (M.S. '01) received the Teacher of the Year Award at Twin Beach School, part of Walled Lake Consolidated Schools.

THOMAS L. HERNICK (B.S. '01) is working at the Saginaw offices of AKT Peerless Environmental Services, an environmental consulting firm.

STEVE STIER (M.S. '01) is a self-employed preservation practitioner and collections curator at Tillers International in Kalamazoo.

SCOTT SUMNER (B.B.A. '01) is chief of police in Chelsea. Sumner served as the interim chief since the post was vacated.

JAMES HOOD (M.B.A. '02) has been promoted to assistant vice president of mortgage and lending for United Bank & Trust Washtenaw.

TIMM KELLY (S.P.A. '02) is principal of Richmond Middle School, part of Richmond Community Schools. Kelly was chosen from a field of 44 candidates.

JAMES R. LOTHSCUTZ (M.A. '02) was named assistant principal at St. Clair High School, part of the East China School District. He previously worked as an assistant principal and athletic director in the same district.

LINDSAY MICHALIK (B.S. '02) formed Little Volcano Productions and directed its inaugural play "Art" at the Riverside Arts Center in Ypsilanti.

CLASS NOTES

AMBER NEUENSCHWANDER (B.S. '02) is a public speaker for high school and college students with Making It Count. She also was a presenter at Diversity Leadership Programs this summer in California and New York.

TIMOTHY PETROSKY (M.A. '02) is public information director for Consumers Energy. He has been with the company since 1981 and has held positions in marketing and sales, community services and public information.

LISA ROOKARD-SWETZ (B.S. '02) joined the staff of Dr. Keith Barbour at Rehabilitation Specialists of Monroe as a manual medicine technician.

SHAWN RYAN (M.A. '02) is principal of Clarkston Middle School, part of Clarkston Community Schools. Ryan previously was assistant principal for Clarkston High School.

DARCY SCHRIEBER (B.S. '02) is the owner of Curves for Women, a workout facility designed for women. He owns the business with his wife, Amanda, also an EMU graduate.

NICHOLE SHORT (E.L.P.U. '02) is the children's services librarian at the Canton Public Library and a children's service library assistant at the Allen Park Public Library.

KEVIN SUMMEY (M.A. '02) is assistant principal of Carman-Ainsworth Middle School, part of Carman-Ainsworth Community Schools near Flint. Summey started his career with the district as its high school varsity basketball coach.

CHAD ADAMOWSKI (B.F.A. '03) showcased artwork titled "Adventures in Maximalism" in Saginaw. Adamowski teaches art at Delta College.

SEAN CROUDY (M.S.W. '03) is school social worker at Homes Middle School in Flint. He has been with the Flint City Schools for 10 years.

DAN GERICS (M.A. '03) is the founder of the Flint City Theatre. His company performs Shakespeare classics for a coffee shop theatre in Traverse City.

TERA S. SIPOS (E.L.P.U. '03) is a substitute teacher for Ann Arbor Public Schools.

APRIL STRONGARONE (B.S. '03) is working as a social worker/case manager for a family homeless shelter in San Francisco. Strongarone will be pursuing her master's degree in social work at New York University in the fall.

KYLE ANN TEICHOW (M.A. '03) has been named a speech-language pathologist for the University of Michigan's Residential Aphasia Program.

KIMBERLY WARREN (B.S. '03) has been named group editor for the agricultural publications of Great American Publishing in Sparta. She will now be the head editor for The Fruit Growers News and The Vegetable Growers News, as well as Spudman magazine – all national trade publications for the agriculture industry.

TODD WRISKA (B.S. '03) is a K-5 physical education instructor at Bingham Farms Elementary School for Birmingham Public Schools.

spotlight BRIAN KELIHER ('84)



The Eastern Echo, eventually handling all the student newspaper's major accounts. "The experience at *The Eastern Echo* was instrumental in everything I've done since then," he said.

After graduation, he worked a year at *The Detroit News* in a similar role, but then decided to literally up and move overnight to the California. "I didn't move out

Brian Keliher left Michigan 19 years ago and moved to the West, seeking a change of pace and a taste of the southern California lifestyle. But if things go his way Nov. 2, he will be spending a lot more time back East—as a U.S. Congressman.

Keliher, a 1984 EMU graduate, is the Democratic candidate in the 52nd District Congressional House race. He faces Duncan Hunter, a 12-term incumbent and powerful Republican who chairs the influential House Armed Services Committee.

Keliher has all his party's key endorsements, but realizes it's a David vs. Goliath campaign.

"We accept the fact that this is going to be a grass-roots campaign," he said. "But should I get lucky and work very, very hard, I could be in Congress."

"And that's the part of the system that I like," he said, referring to the role of the underdog.

The 52nd District has a 60-40 Republican advantage in voter registrations, but that hasn't deterred Keliher.

"I think everybody should run," he said. "You get to see what's broken and what's not. And what's broken is money." He supports providing free TV time to legitimate candidates.

Keliher was born in Dearborn Heights, Mich., in 1961, and turned 43 in August. A graduate of Crestwood High School, he spent two years at Schoolcraft College before enrolling at EMU, where he graduated with a marketing degree. He's the youngest of three sons, and now the entire family has followed him to The Golden State.

While a student, he worked nearly three years as an account executive for

here with a job. I came out here to experience the southern California lifestyle," he said.

He landed in San Diego, changed careers and became a public relations adviser and agent to writers. He entered the Thomas Jefferson School of Law in San Diego in order to expand the services he could offer writers. He entered the California Bar in 1994.

One of his notable recent clients is Dave Catrow, the illustrator on "Lu and the Swamp Ghost," the children's book coming out this fall from James Carville, former Clinton campaign manager. In his law business, Keliher practices intellectual property law and estate planning issues.

Keliher received national attention from 1992-96 as editor and publisher of "The Flush Rush Quarterly," a 16-page newsletter critiquing radio show host Rush Limbaugh, which had 15,000 subscribers at its peak. But after receiving 13 death threats and trying to balance school and a full-time editor's role, Keliher published his ceased publication.

Keliher has been a college instructor for seven years and has volunteered extensively with the San Diego Volunteer Lawyers and Legal Aid, where he helps children unfairly denied special education services and teaches mediation skills to school children. He twice was awarded the Wiley W. Manuel Award for Pro Bono Legal Services.

With wife Christina and daughter Emily, San Diego is now home for Keliher. But he wouldn't mind spending time away from them in Washington, D.C. As he enters the final weeks of the campaign, he takes some solace in the fact the Duncan Hunter won his seat 24 years ago—from a Democrat.

More info on Brian > www.brianforcongress.org

CLASS NOTES

spotlight RON CAMPBELL ('77)

As the game clock ran down the final minute of the 2004 Stanley Cup final, an anxious Ron Campbell studied the action from the Tampa Bay Lightning's owner's box and waited.

While he knew the "Fat Lady" was somewhere inside the St. Pete Times Forum arena, he hadn't heard her sing yet. And after surviving a National Hockey League-record 13 straight playoff games without winning twice in a row, Campbell—the team's president—and the Lightning were hardened realists, if not a bit superstitious.

But on June 7, it finally was over. The game clock read :00, and Campbell, a 1977 cum laude graduate of EMU with a bachelor of business administration degree, and the Tampa Bay Lightning were on top of the hockey world.

"It was such an intense feeling," said Campbell, recalling the euphoria and great sense of relief that evening in defeating the Calgary Flames 2-1 in a seventh-game showdown. "I was enjoying the win, but also savoring it from a big-picture perspective. Looking back at where we came from, winning the Stanley Cup was improbable and totally unbelievable."

The Lightning, while a playoff participant the year before, had hardly been viewed as Stanley Cup material. In 1997, *Sports Illustrated* named the club the worst franchise in professional sports. The Lightning had fewer fans, wins and traditions than just about anybody else. And in a town focused more on the local professional football team, the Buccaneers, the team was easy to miss altogether.

That's the landscape Campbell encountered in 1999, when William Davidson's Palace Sports and Entertainment (PS&E) company bought the Lightning for \$100 million. Campbell, then the top financial executive at PS&E (best known as owners of the Detroit Pistons), was the organization's clear choice to lead the Tampa Bay Lightning.

As president, the 48-year-old Campbell is responsible for all day-to-day aspects of the hockey club and arena, including sales, marketing, finance, team operations and arena management. He reports to PS&E's Tom Wilson and the company's ownership. He also serves as an executive vice president for PS&E and the Detroit Pistons Basketball Company.



Team effort: Campbell congratulates players after winning the Cup.

After buying the company, Davidson asked his managers for a sound, long-term management plan and then empowered them to implement it. "We have incorporated PS&E's first-class way of doing things, but to be successful in our business, you have to be flexible and react to opportunities very quickly.

"As the top executive in Tampa, I've been entrusted and have been fortunate to shape the organization into one we have become very proud of," Campbell said. "Like any good entrepreneur, you live and breathe the company every day."

Before the Stanley Cup-winning season started, Campbell gave John Tortorella, the Lightning's coach, a copy of "Good to Great: Why Some Companies Make the Leap... and Others Don't." The book's message resonated with the coach, who in turn gave a copy to each player.

"John fell in love with the first line from the book: 'Good is the enemy of great.' We had become a good team. Were we

ready to become more focused, disciplined and make the commitment to take the next step?" Campbell asked. "Well, we hoped to improve but didn't really ever expect to become Stanley Cup champions so quickly."

"Truly, we won because we played as a team, we stayed healthy all year and we got

the necessary fortuitous bounces," he added. "It was a fun year."

One of the Stanley Cup's traditions is that the Cup gets to travel for a year with the winning team's coaches and players. Campbell recently had his day July 11, where he shared the most famous trophy in sports with family and friends here in Michigan.

Campbell, who is an emeritus trustee on the EMU Foundation governing board, grew up in Redford Township and graduated from Redford Union High School, where he lettered in basketball and baseball. His wife, Jane (Foldi) Campbell, was an EMU Presidential Scholar and graduated in 1977 as a med-tech major.

His experiences during the past five years have changed his favorite sports passion to hockey. "Hockey, live, is the greatest sport to watch," he said. "The skill, speed and the physical nature of the game and its players keep your attention. More than any other major sport, every player has to compete at their fullest potential whenever in the game if your team is going to be successful. Any letdown so often will cost you a precious goal, whether in the first minute of the game or the last, and it can change the game because of the momentum shifts of each score."

The new passion, coupled with a love for Tampa, has helped make Campbell optimistic about the future. "It's going to be more than a football town going forward," he said.

More info on the Tampa Bay Lightning > www.tampabaylightning.com

CLASS NOTES & MEMORIALS

RUTH E. RIGGS
(B.S. '23) Belleville,
Jan. 29

FRANK MILLER
(A.B. '27) Locust
Grove, Va., Jan. 25

LEONA IRENE
DISBROW (B.A.
'32) Ypsilanti, Jan. 24

EVA-DEANE
ELWELL (C.L. '32)
Ypsilanti Township,
Jan. 19

HARRY A.
GRAICHEN (B.A.
'32) Traverse City,
Feb. 26

KATHRYN R.
NEUMAN (B.S. '39)
Grosse Pointe, Jan. 6

SUSANNA
BALTZER (B.S. '41)
Ludington, March 14

JOSEPH AUGUST
VERSICAL (B.A.
'43) Detroit,
March 22

BENJAMIN J.
STANDEN (B.S.
'47) St. Joseph, Feb
29

HELEN ALLISON
JONES HEIDAMOS
(B.S. '48) Three
Rivers, Jan. 31

DONALD W.
HOCHREIN (B.S.
'49) Parker Dam,
Calif., Feb. 10

ELIZABETH
UPHAM MCWEBB
(B.S. '50) Monroe,
Jan. 29

SUE HAWKINS
LEUTHEUSER (B.A.
'53) Incline Village,
Nev., March 19

ROYCE G.
BLOOMER (B.S.
'56) Riverview, Fla.,
Feb. 21

JOYCE MARIE
FANGBONER (B.S.
'58) Elk Rapids,
Jan. 20

PAULINE E. DAVIS
(B.A. '57) Clarkston,
Jan. 15

THELMA I. FRAYER
(M.A. '58) Ridgeway,
Jan. 2

SIGRID F. ELSNER
(B.S. '59) Durand,
March 11

MILDRED IRENE
SMITH (B.S. '63)
Ann Arbor, March 1

EDITH MAE
PINTER (B.S. '64,
C.E. '67) Ann Arbor,
Jan 16

JOSPEH
ZAWADZKI (M.A.
'64) Canton, Feb. 16

FREDERICK
CHARLES KAUMP
(M.A. '68) Madison,
Feb. 26

JAMES DUANE
PLAIN (B.B.E. '69)
Mayville, Feb. 8

MARIAN R.
RICHARDS (B.B.E.
'70) Ann Arbor,
Feb. 6

JOAN NORA
WAISANEN (B.S.
'71) Waterford, Feb 1

RICHARD V.
LYNDON (B.B.A.
'74) Gishen, Ind.,
Jan 30

DIANA TANNER
(B.S. '83, E.L.P.U.
'88) Canton
Township, March 4

PHILLIP GLENN
FRIEDRICK (M.L.S.
'89) Concord,
March 4

HELEN KAREN
MASON (B.S. '90)
Ida, Feb. 17

LEIGH ZEHNDER
NAJERA (B.B.A.
'93) Frankenmuth,
March 10

DAVID P. LITTLE
(B.S. '96, M.S. '01)
Pinckney, Feb 28

JEFFREY M.
MINICH (B.B.A.
'76) Fountain Hills,
Ariz., March 27

MARIE CLEARY
MANGAS (B.A. '62,
M.A. '65) Ypsilanti,
March 24

MARIAN E.
OSBORN (B.A. '45,
M.A. '67) Davison,
March 15

PHILIP H.
HADDRILL (B.S.
'38) Dearborn
Heights, March 10

PAULINE N.
CRAVER (B.S. '56)
St. Petersburg, Fla.,
March 26

KRISTINE
GUSTAFSON (B.S.
'70) Clinton
Township, March 29

CRAIG BELL
(M.A. '75) Canton
Township, April 6

ELEANOR
HAMMOND (C.L.
'29) Climax, April 4

STUART DOUGLAS
GEDDES (B.B.S.
'67) East Lansing,
March 20

PAMELA A. WHITE
(B.S.N. '01) Jackson,
April 3

LINDA MARIE
CLARK (B.S. '76)
Lansing, Feb. 25

DONALD L. LABUN
(B.S. '59) Dundee,
April 1

IRENE GRACE
WEBSTER (B.A.
'56, M.A. '61) Flint,
April 11

ERVIN DAVID
JOHNSON (M.B.A.
'72) Gansevoort, N.Y.,
April 2

MARIAN NOTT
(B.S. '31) Hillsdale,
May 3

FORD
RICHARDSON
BRYAN (B.A. '34)
Dearborn, May 14

WALTER GIBBS
(C.L. '35) Whitehall,
March 31

CHARLES
PILLSBURY (B.S.
'42, M.A. '51)
Fremont, April 10

ROBERT WHITE
(B.S. '49) Royal Oak,
April 17

MICHELLE PESEK
(B.S. '59, M.A. '64)
Ann Arbor,
April 21

IOWN DARLING
(B.S. '61, M.A. '66)
London Township,
April 17

HELEN KNIGHT
(M.A. '69) Eagle
Harbor, April 19

RICHARD M.
WITTE (B.S. '70,
M.A. '73) Big
Rapids, Jan. 1

MILDRED N.
BOLTON (B.S. '71)
Osseo, Mich.,
May 11

STAFF & FACULTY Memorials

Taki J. Anagnostou, a former professor,
died Feb. 17.

Lt. Col. (Ret.) Miles W. Holmes Jr. (S.P.A.) died April 6 in Bessemer. In addition to being an alumnus, he was a former faculty member in the military science department.

Charles E. Helppie was a professor of economics from 1965 to 1976. He was the president of the EMU Faculty Senate from 1969 to 1970.

James Robert Palasek, a professor emeritus from the Department of Special Education/Speech-Language Pathology, died June 14 at his residence in Ypsilanti. He taught at EMU from 1966 to 1998. He was 68.

Jim Amitage, a former assistant men's basketball coach, died May 1 in West Palm Beach, Fla. He also had earned two master's degrees from EMU. He was 57.

Marion Grudier Carr, a former professor of English in the 1950s and '60s, died April 27.

spotlight JOHN HEFFRON ('93)

Even while a student at Eastern Michigan University, John Heffron was doing stand-up comedy. In fact, the winner of this year's "Last Comic Standing" competition had a long run at The Improv in Chicago while still a student.

Today, Heffron's humor is getting national attention. The South Lyon, Mich., native, who graduated from EMU with a bachelor of science degree in 1993, was the top vote-getter Aug. 12 among three finalists who appeared live on the talent show's season finale. Voters nationwide called in their votes and in picking Heffron, helped him earn an NBC talent contract, a half-hour special on cable's Comedy Central network and an appearance on "The Tonight Show with Jay Leno."

On his Web site, Heffron wrote that the experience had been exhausting and exhilarat-

ing. "I have run through the whole gamut of emotions on the show. I have hated it and I've loved it," Heffron wrote on his site's blog.

Sally McCracken, a professor in EMU's Department of Communication and Theatre Arts, taught Heffron in several courses during his undergraduate years on campus. "He was a great guy. He had a clever sense of humor in class," she said.

"Even then, he always picked the drama of childhood and youth as source material," she said. "He's now 'big time.' My whole family voted for him. That's 21 votes right there!"

Heffron, who now calls California home, already has had a special on the Comedy Channel and has appeared on "Star Search." He acknowledged his home state at the end of his Aug. 12 routine, shouting "Michigan, hello" to the audience.



Heffron has released two comedy CDs.

More info on our "Last Comic Standing" > www.johnheffron.com

© NBC

CAMPUS CALENDAR

More info: www.emich.edu/calendars

September

18 | Governing

EMU Alumni Association Board of Directors' meeting, 9 a.m., Foundation Building.

18 | Go Green!

Alumni Association tailgate. Eagles vs. Toledo Rockets. 4-6 p.m., Rynearson Stadium.

20 | Swing away

Baseball Alumni Golf Outing. 10 a.m. shotgun start, Majestic Golf Club, Hartland. More info: 734.487.0315.

24 | Heritage

Latino Alumni Chapter Hispanic Heritage Month Meet and Greet. 6 p.m., University House. More info: emu_latinoalumni@yahoo.com.

25 | Third Annual Walk for Women's Athletics

Raises scholarship money for female athletes competing in 12 sports. Last year, 340 people par-

ticipated. 9 a.m., Convocation Center. More info: 734.487.7859.

26 | Welcome home!

Homecoming Week festivities begin with Oozeball Tournament. 7 p.m., fields by Hoyt Towers. Events run through Sunday, Oct. 3.

October

7 | Capitol idea

Washington, D.C., alumni reception. 6-8 p.m., Van Scoyoc and Associates. More info: 734.487.0250.

9 | Family Day

Annual EMU tradition. Family-oriented events across campus, including the "Yo-Yo Man" (left). Noon-4 p.m. More info: 734.487.2483 or 734.487.4400.



9 | Saluting excellence

Convocation of Excellence. 10:30 a.m. - noon, Pease Auditorium. By invitation only. More info: 734.487.2483.

18 | Class project

Alumni reception for College of Education graduates. 6-8 p.m., Radisson Hotel, Lansing. More info: 734.487.2316.

21 | Ryder revisited

Alumni and friends reception, Oakland Hills Country Club, site of 2004 Ryder Cup. 6-8 p.m., Bloomfield Hills. Tickets: \$15. More info: 734.487.0250.

23 | Top teachers

14th Annual Teaching Excellence Awards. 9:30 a.m., McKenny Union. More info: 734.487.0250.

November

2 | Zap! Pow! Bam!

"Holey Moley: More Comic Art at Eastern." Original artwork of cartoons, comic strips and comic books. Ford Gallery through Nov. 30. More info: 734.487.0465.

5 | Simon says

"Broadway Bound," presented by EMU Theatre. Nov. 5-6, 11-13. 8 p.m., Quirk Theatre. More info: 734.487.1221.

13 | Banderama

An EMU bands spectacular. 7 p.m., Pease Auditorium. General admission: \$8 More info: 734.487.2282.

20 | Governing

EMU Alumni Association Board of Directors' meeting, 9 a.m., Foundation Building.

DECEMBER

4

Deck the halls EMU Alumni Holiday Concert and dessert reception. Reception is 6-7:45 p.m., followed by EMU Choir and Chamber singers in concert. 8 p.m., Pease Auditorium. More info: 734.487.0250.

Save the Date Nov. 6

Ford Field will be the site of a memorable MAC showdown as the EMU Eagles take on Central Michigan University in the "Collegiate Clash" Saturday, Nov. 6. The Eagles' kickoff is 4:30 p.m.; the double-header day begins with a noon contest between Wayne State University and Hillsdale College. Tickets are \$20, \$15 and \$5 and are good for both games. Ticket info: contact EMU (734.487.2282) or Ticketmaster. For suite rentals, contact Doug Kose at 734.487.5642. Those interested in tailgating with the Alumni Association, contact their office at 734.487.0250.

**EASTERN MICHIGAN
UNIVERSITY™**

Office for Alumni Relations
1349 S. Huron St., Suite 2
Ypsilanti, MI 48197

NON-PROFIT
ORGANIZATION
U.S. POSTAGE
PAID
PERMIT NO. 80
DETROIT, MI

