

INSIDE

Jason Aldean
Zooms Past Two
Bands At CMT
>page 4

Phil Vassar
Launches
A Label
>page 4

Sara Evans
Leads A Sony
Chart Onslaught
>page 5

Lady
Antebellum,
Craig Campbell
Hit The Tube
>page 6

Nashville
Marks Flood
Anniversary
>page 6

BLAKE SHELTON USES TV TO STRETCH SALES, AWARENESS

When he took a co-hosting slot with **Reba McEntire** at the Academy of Country Music (ACM) Awards on April 3, **Blake Shelton** made maximum use of the platform with two performance slots and a chance to show off his snarky sense of humor.

Warner Bros. took optimal advantage of the opportunity. Shelton's latest single, "Honey Bee," was delivered digitally through PlayMPE within minutes of his debut performance of the song. And the label followed up with a 10-second ad in 20 key markets encouraging viewers to download the single at iTunes or the singer's website.

The results were impressive. "Honey Bee" sold 139,000 downloads, according to Nielsen SoundScan, in the ensuing week, setting a digital-era record for first-week track sales by a male country act to debut at No. 1 on Billboard's Country Digital Songs chart.

In addition, 11 other Shelton tracks more than doubled their sales over the previous week, leading to an increase of more than 300% total in his singles sales.

"Honey Bee," which has so far reached No. 16 on Billboard's Hot Country Songs in its four charted weeks, comes at a time when Shelton seems to be transforming from a well-regarded singer to one of the genre's major faces. In addition to the ACM co-hosting gig, he had a key introductory position on CBS' April 22 ACM special "Girls' Night Out: Superstar Women of Coun-

try" and he began a high-profile role on April 26 as one of four judges on NBC talent series "The Voice." "Girls' Night Out" was the most-watched show of the night, reaching 8.5 million viewers. And "The Voice" finished No. 2—behind "Dancing With the Stars"—in its first hour, then took No. 1 in its final hour with more than 12 million viewers.

"You can't [write] scripts like this," Warner Music Nashville president **John Esposito** says. "Who would have imagined a year-and-a-half ago we'd be co-hosting the ACMs and appearing on a TV show that's doing ratings like that?"

The flood of exposure wasn't calculated. Shelton had to realign some concert dates to make room for "The Voice," which reaches its conclusion with live tapings in Los Angeles this summer, just prior to the July 12 release of the "Honey Bee" album. Shelton rushed into the studio at the end of April to finish work on the project, using time he had blocked out for personal matters. He's slated

to marry fellow artist **Miranda Lambert** on May 14.

"I've been doing this too long to be hitting like a new artist again all of a sudden," says Shelton, who released his first album in 2001. "But on the other hand, this type of opportunity just don't happen, and I'm glad that I put my man pants on and said, 'Let's do it. Let's get on this thing and see where it takes us.'"



Blake Shelton celebrated his No. 1 single "Who Are You When I'm Not Looking" April 28 with the song's writers, Earl Bud Lee and John Wiggins, at BMI's Music Row office. From left are BMI VP of writer/publisher relations for Nashville Jody Williams, Shelton, Lee and Wiggins.

LADY ANTEBELLUM

THE HIGHLY ANTICIPATED NEW SINGLE

"JUST A KISS"

Available Now on Play MPE
ON YOUR DESK THIS WEEK
GOING FOR IMMEDIATE ADDS

CATCH THE LIVE PERFORMANCE ON AMERICAN IDOL MAY 5TH!

CLICK HERE TO LISTEN

Shelton's role as a judge on "The Voice" gives him a chance to put that decade of experience to work in front of a national audience alongside better-known pop stars **Christina Aguilera**, **Cee Lo Green** and **Maroon 5's Adam Levine**.

In the last decade, Shelton has stubbornly walked his own line in many ways. He refused for several years to cut his hair, though he eventually gave in. But he hasn't cut back on his use of blue humor and one-liners in public settings. Knowing when to tow the line as drawn by his advisers and when to test the limits has served him well.

"The worst thing you can do is blend in and not stand out," he says. "That's the reason that a lot of television opportunities have come along all of a sudden. With television comes a new fan base, and with a renewed fan base comes more sales, and with more sales, radio pays attention and it kind of becomes a snow-ball effect."



TOM ROLAND
Editor
Tom.Roland@billboard.com

Shelton's acerbic tendencies were, in fact, one of the reasons his co-hosting role with McEntire succeeded. He brought some unpredictability to the role, acknowledged in advance by Lambert, who suggested censors might have to watch him closely, and by Dick Clark Productions' **R.A. "Rac" Clark**, executive producer of the ACM Awards and "Girls' Night Out."

"Blake's known to be a little bit of a loose cannon," Clark says. "I said those very words in a lot of interviews, and Blake came to me—he'd read a few [stories]—and said, 'Rac, I'm gonna be OK.' I said, 'Blake, I trust you, but

in the heat of the moment, who knows what you're gonna do?' He said, 'That's right!' I said, 'Don't say that to me!' He likes to mess with you."

But it's a calculated move on Shelton's part. He has, likely through trial and error, learned the limits of acceptability.

"He plays that I'm-gonna-mess-with-you [card]," Clark says. In the "Girls' Night Out" special, "he had a few things that didn't make it to air, but he knew we were a taped show. When we were live on CBS, [he was the] consummate pro."

Shelton's performance on the ACM Awards may set up a long-term co-hosting partnership with McEntire, who has hosted the show 13 times. She inadvertently created the opportunity for Shelton, who's managed by **Narvel Blackstock** and **Brandon Blackstock** through her Starstruck Management Group, when she opted one year not to host the ACMs. The organization and Dick Clark Productions realized it would be served by grooming someone to be a successor if she should decide to stop.

Not that anyone is pushing her out of the role.

"I personally hope she does it forever and I get to [co-host] it with her," Shelton says.

Shelton is already feeling the buzz from last month's TV exposure. When he made a late-night stop at a gas station, an African-American woman—someone who "in my history has not been my demographic," Shelton says—recognized him and "freaked out," he says with a laugh.

THIS WEEK AT CALLOUT AMERICA

TOBY KEITH IS 'SOMEWHERE ELSE' WHILE SCORING AT CALLOUT

Toby Keith, who's in the midst of a USO tour in the Middle East, is posting consistent gains on "Somewhere Else," which finishes the week at No. 3, up strong from No. 13. The strength of appeal is with core 35-44s at No. 1, up from No. 9. Core males are at No. 2 and No. 6 passion. Core females are at No. 11. Younger females 18-34 give it a No. 10 placement.



Josh Turner repeats as the No. 1 song at Callout America with "I Wouldn't Be a Man," which also comes in as the No. 3 passion song. Adults 25-54 are at No. 1 and No. 2 passion. Females 18-plus rank the Don Williams cover at No. 2 and No. 3 passion. Men 25-34 are at No. 1 and No. 4 passion. Listeners are well in front of radio.

Rascal Flatts continues in a strong growth trend with "I Won't Let Go" at No. 2, up from No. 9. It duplicates the overall score with a No. 2 passion ranking. Adults 25-44 place the song at No. 1, up strong from No. 9. Females are at No. 1, up from No. 5. Men are also strong with the title at No. 4, up from No. 15.

Taylor Swift maintains strong research with "Mean," which ranks at No. 5 overall and at No. 9 passion. Younger 25-34s give it a similar No. 5 positive score and add a higher No. 3 passion ranking. Adults 25-44 are at No. 5 and No. 9 passion. Females also put it at No. 5. Male strength is in the 25-44 demo at No. 4 and No. 2 passion.

Sara Evans has been seeing strong growth on "A Little Bit Stronger." Younger 18-34s are the strength at No. 6 and No. 8 passion. Females 18-34 are strong at No. 5 positive and passion, and females 25-44 are at No. 9. Sara is testing top 10 in 75% of all Callout America markets.

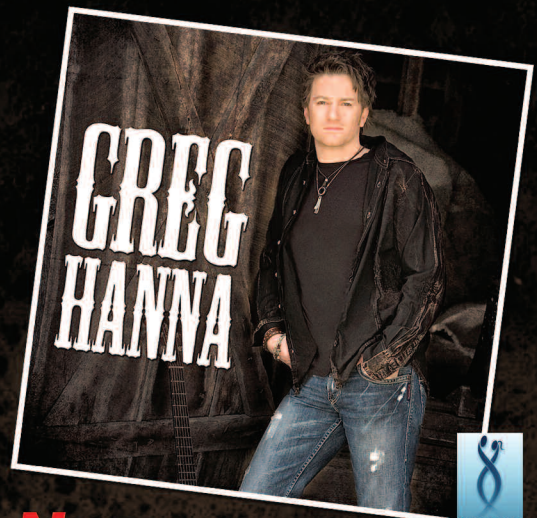
—John Hart, Bullseye Marketing Research
email: hart@bullsi.com

FALL IN LOVE WITH

GREG HANNA

AND "MAKIN' LOVE REAL"

Going For Adds Now



Special song. Special singer.

**THANK YOU
Country Radio
for
believing!**

Sara Evans

*"A Little Bit
Stronger"*



RCA RECORDS LABEL
NASHVILLE

**Thanks
for Sara's 5th
#1!!**

"She didn't talk to me as Blake Shelton the country singer," he recalls. "She talked to me as the guy from that show. It hit me, man—['The Voice'] has aired one time. That's just the power of television. Hopefully now because of that show, she'll go and investigate and find out I make records and hopefully pick one of them up."

It's a scenario WMN's Esposito suggests is likely.

"I think we're just at the beginning of something very magical for decades to come," he says. "I mean that. He's in that class."

JASON ALDEAN PASSES CMT LEAK LEADERS

The **Band Perry** and **Zac Brown Band** did indeed accrue three nominations apiece when the CMT Music Awards nominees were announced last week, though **Jason Aldean** passed both acts after an accidental post suggested the two bands might be the most-nominated acts in the field.

Aldean ended up a finalist in four categories as clips featuring "My Kinda Party" collected nods for video, male video and best Web video of the year. His duet with **Kelly Clarkson**, "Don't You Wanna Stay," also made him a finalist for collaborative video.

AceShowbiz.com had ascertained a partial list of finalists when CMT mistakenly unveiled seven of the 10 categories on its website a week ago. AceShowbiz then posted a story that laid out the nominees before taking it down at CMT's request.

As reported in last week's Billboard Country Update, the Band Perry and Zac Brown Band appeared three times in those first seven fields, though neither act added another nomination to its tally. They ultimately tied for second place among the finalists with triple nominees—**Rascal Flatts**, **Miranda Lambert**, **Taylor Swift** and **Lady Antebellum**—during the official announcement on April 27.

Nine acts received a pair of nominations.

The CMT Music Awards will be presented June 8 in Nashville. Go [here](#) for the complete list of nominees.

MOVERS & SHAKERS

Chuck Taylor, host of the syndicated show "The Official Texas Countdown," started April 29 as a morning personality on KHYI Dallas-Fort Worth, sharing duties with "**Big**" **Gus Samuelson**. Taylor replaced **Chance Cody**, who left the post to focus full-time on his career as lead singer for Spur 503. Taylor will continue to host the countdown, which airs in 40 markets. Reach Taylor [here](#) . . . **Jim Murphy** has taken the PD reins at KATC Colorado Springs, Colo. His résumé includes programming posts at several radio networks, GAC and such stations as KFKF Kansas City, Kan., and WOKQ Portsmouth, N.H. Reach him [here](#) . . . **Chris Bender** was set to join **Bob Cole** and **Jamie Ivey** on the morning show at KVET Austin on May 2, according to the Austin American-Statesman . . . Sports-talk KJCS Lufkin-Nacogdoches, Texas, was slated to adopt a country format on May 2, according to the Lufkin Daily News . . . Clear Channel has hired Steve Casey Research International founder **Steve Casey** as senior VP of program research strategy, reporting to executive VP of programming development **Tom Owens** . . . Clear Channel Radio has established a Big Machine Radio channel for iheartradio, available online or through an app. Delivering commercial-free music from the likes of **Taylor Swift**, **Martina McBride** and **Justin Moore**, it's one of more than 750 iheartradio channels . . . Country Radio Broadcasters welcomes nine new members to the agenda committee for the 2012 Country Radio Seminar. The newcomers include **Ken Boesen**, WKIS Miami; **Craig Cohn**, KPLX Dallas-Fort Worth; **Greg Hill**, McGhee Entertainment; **Stephen Linn**, CMT; **Nick Martin**, WXFL Florence-Muscle Shoals, Ala.; **Mike Preston**, KKWF Seattle; **Ron Rodrigues**, Arbitron; **Jennifer Thorpe**, Columbia Nashville; and **Jeff Winfield**, NRG Media . . . **Steve Geoffries** has taken the Clear Channel/Charlotte, N.C., OM post, Inside Radio reports. Geoffries held a similar role for Clear Channel in the Greenville-Spartanburg market. Duties in the new location will include serving as PD for WKKT Charlotte . . . Also from Inside Radio: Former KILT Houston afternoon personality **Rowdy Yates** has joined KVOO Tulsa, Okla., to do mornings with **Sunny Leigh** and **Luke Dawg**.


'ROUND THE ROW

Phil Vassar officially launched his label and management company, Rodeowave Entertainment, with the May 2 release of his new single, "Let's Get Together." Former Universal South and Arista promotion executive **Teddi Bonadies** heads the staff, which also includes recent Stroudavarious exec **Bill Macky**, who will oversee the promotion team. **Stan Marczewski** will handle Northeast and Midwest promotion with **Ken Rush** assigned the Southwest. Another regional promotion exec is expected to be named in coming weeks. Reach Bonadies [here](#), Macky [here](#), Marczewski [here](#) and Rush [here](#) . . . Singer/songwriter **Brady Seals** and former Gibson Guitars Web editor **Gabriel Hernandez** have formed Music City Pickers, a company designed to buy and resell vintage musical instruments. The duo makes its first stop May 20-22 in Mason, Ohio. Go [here](#) for more in-



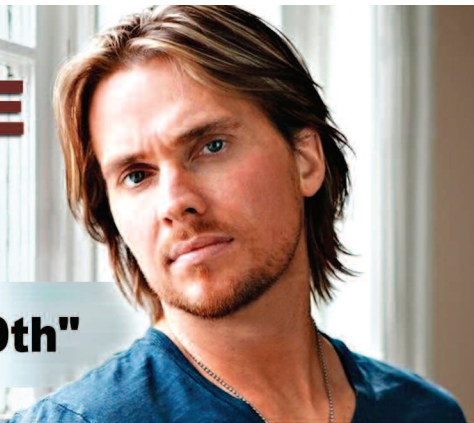
BILLBOARD COUNTRY BOXSCORE			
Gross Ticket Price(s)	Artist Venue/Date(s)	Attendance Capacity	Promoter(s)
\$4,173,338 \$252, \$27	KENNY CHESNEY Cowboys Stadium, Arlington, Texas, April 16	46,551 47,256	THE MESSINA GROUP/AEG LIVE
\$1,301,040 \$125, \$95	KENNY CHESNEY Mohegan Sun Arena, Uncasville, Conn., April 8-9	14,781 two sellouts	LIVE NATION, THE MESSINA GROUP/AEG LIVE
\$608,879 \$75, \$29.50	KENNY CHESNEY INTRUST Bank Arena, Wichita, Kan., April 13	10,372 sellout	VARNELL ENTERPRISES, THE MESSINA GROUP/AEG LIVE
\$449,286 \$58.50, \$38.50	ZAC BROWN BAND The Dell Diamond, Round Rock, Texas, April 17	9,103 10,000	JAM PRODUCTIONS, OUTBACK CONCERTS
\$420,240 \$75, \$25	KENNY CHESNEY Cumberland Co. Civic Ctr., Portland, Maine, April 7	6,722 sellout	THE MESSINA GROUP/AEG LIVE

Reported worldwide boxscore figures for Country artists. Boxscore figures should be submitted to Bob Allen by phone (615-793-0466), fax (615-793-2891) or email (bob.allen@billboard.com).




"I COULD BE THE ONE"

"GOING FOR ADDS THIS MONDAY MAY 9th"



I just listened to the song and was frankly blown away-- very good song and strongly delivered! It's been a long time since something came to me so seemingly out of the blue that was so "in the pocket."
 —John Sebastian PD/WWQM Q106, MADISON, WI

"SINGLE IS GREAT!" "GUY CAN SING HIS ASS OFF!"
 —LUKE JENSEN, PD/OM KVOO, TULSA



formation on the company . . . AristoMedia has promoted employees in various departments within the media, marketing and promotion firm. Senior publicist **Christy Watkins** has been upped to senior director of publicity, while **Ryan**



Moore was promoted to publicist/media relations manager. **Jon Walker** has become senior director of digital initiatives and new media for the AristoWorks new-media wing, while **Jaime Marconette** is now video promotion manager for Aristo Video. **Bobbie Morhiser** was promoted to manager of dance club marketing for Marco Promotions, with **Sarah Matlock** elevated to radio promotion coordinator. **Matt Watkins** has been promoted to AristoMedia director of operations . . .

Stefanie Porolniczak has been promoted from marketing rep at Outback Concerts of Tennessee to VP of new media. Reach her [here](#) . . . Texas artist **Kristen Kelly** has signed a recording deal with Sony Music Nashville's RCA imprint. She's set to record her first tracks for the label with producers Paul Overstreet and **Tony Brown** . . . Singer/songwriter **Scott Lindsey** has signed a management contract with Marty Martel's Midnight Special Productions . . . Former Ryman Auditorium GMG. **Scott Walden** has been appointed executive director of the Alabama Music Hall of Fame, the Florence, Ala.-based Times Daily reports. Walden takes over the position May 13 from **Hank Adam Locklin**, who held the job on an interim basis for more than four months . . . Record executive **Charlie Fach** died April 25 in Nashville at the age of 82. As head of Mercury's Smash label and an A&R rep for PolyGram, he worked with such acts as **Roger Miller**, **Bachman Turner Overdrive** and the **Ohio Players**. After moving to Nashville, he played supporting roles in country hits by **George Burns** and the **Kendalls** and founded the Compleat imprint, which provided **Vern Gosdin** a series of mid-'80s hits. A memorial service will be held May 7 at the Hermitage Funeral Home in Nashville. In lieu of flowers, the family asks that donations be made to the ASPCA or the Grammy Foundation.

GOOD WORKS

Martina McBride, **Dierks Bentley**, **Kix Brooks** and **Lady Antebellum's Charles Kelley** were among the celebrities who took part in the 12th annual Eco-Energy Best



The Diamond Rio charity organization Team Rio raised more than \$100,000 for Big Brothers Big Sisters of Middle Tennessee running in the Country Music Marathon and Half-Marathon on April 30. From left at a carb-loading dinner two days earlier are Travis Television producer Jeanette Jolley, Billboard Country Update editor Tom Roland, Modern Management VP Renee Behrman-Greiman, Diamond Rio guitarist Jimmy Olander, Modern Management director of new media and tour marketing Jack Furr and executive assistant/office manager Jackie Stammen.

Cellars Dinner, which raised more than \$170,000 for the T.J. Martell Foundation. **Big Kenny** served as an auctioneer at the event, which brought the total raised for cancer research since the dinner's inception to more than \$2 million.

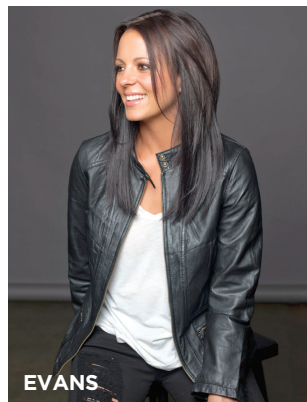
Among others at the gathering, which included a four-course dinner prepared by chef **Ken Frank** of La Toque in Napa, Calif., were **Kellie Pickler**, **Rascal Flatts** guitarist **Joe Don Rooney**, **Blake Shelton**, **Laura Bell Bundy**, three members of **Little Big Town**, **Clint Black**, **Lisa Hartman Black**, former **Journey** keyboardist **Jonathan Cain** and **Amy Grant**.

ON THE CHARTS

SONY MUSIC MAKES HISTORY ON HOT COUNTRY SONGS; SIX FIGURES FOR BRYAN ON DIGITAL LIST

As **Brad Paisley** (featuring **Alabama**) leaps 10-5 with "Old Alabama" (Arista Nashville), the artist joins four other Sony Music Nashville acts in the chart's upper tier, marking the first time in the Nielsen BDS era (since January 1990) that any label or label group has occupied the entire top five on Billboard's Hot Country Songs chart. There have been numerous instances where a label or label group has had three of the top five, and a handful of times when four of the top five belonged to the same company. Prior to the four Sony songs that populated last week's top five, the most recent four-out-of-five occasions also belonged to Sony—two weeks in March 2008 and a pair in July 2008.

Starting at the top, the most celebrated of those five ranks is **Sara Evans'** first leader in almost six years (her fifth overall), achieved with "A Little Bit Stronger" (RCA), which shifts 2-1. Evans most recently topped the chart when "A Real Fine Place to Start" spent two weeks at the summit in September 2005—her other No. 1 singles are "No Place That Far" (1999), "Born to Fly" (2001) and "Suds in the Bucket" (2004). During the past five years (since the Billboard issue dated May 13, 2006), Evans is one of only five solo female artists to achieve No. 1 songs—the others are **Miranda Lambert**, **Reba McEntire**, **Taylor Swift** and **Carrie Underwood**. At 33 weeks, the new No. 1 is Evans' slowest trek to the top—three weeks longer than



"Suds." Her return to the top closes the longest gap between No. 1 songs—five years, seven months, three weeks—since **Garth Brooks** (nine years, one month, two weeks between "To Make You Feel My Love" and "More Than a Memory," 1998-2007). Evans' spread is the longest for a female artist since **Dolly Parton** (14 years, 10 months between "Rockin' Years," with **Ricky Van Shelton**, and **Brad Paisley's** "When I Get Where I'm Goin'," on which she guested, 1991-2006). It's the longest for a woman in a lead role since McEntire (six years, one month, one week between "If You See Him/If You See Her," with **Brooks & Dunn**, and "Somebody," 1998-2004).

This week's top five is rounded out by Lambert's "Heart Like Mine" (Columbia), which steps 3-2 in its 19th chart week, followed by a 1-3 slide by **Kenny Chesney's** "Live a Little" (BNA), while **Jerrod Niemann's** "What Do You Want" (Arista Nashville) bullets for a second week at No. 4, its best rank so far.

On Billboard's Country Digital Songs, **Luke Bryan** ropes his best rank and biggest Nielsen SoundScan week since the chart was introduced at the beginning of last year, as "Country Girl (Shake It for Me)" (Capitol Nashville) opens at No. 1 with 106,000 downloads. That outpaces "Rain Is a Good Thing," which logged its best sales week with 36,000 downloads and peaked at No. 5 on the May 8, 2010, chart.

Also noteworthy is **Carrie Underwood's** No. 32 start with "How Great Thou Art," which moves 13,000 downloads following her performance on "Girls Night Out: Superstar Women of Country" (April 22, CBS). The retail download is a 2008 live performance that originally appeared on "How Great Thou Art: Gospel Favorites Live From the Grand Ole Opry" (Opry/RCA/SMN). The track also opens at No. 2 on Billboard's Christian Digital Songs.

HOUSEKEEPING: Due to excessive weather-related downtime, **WDRM** Huntsville, Ala., has been temporarily removed from the Hot Country Songs panel. Concurrently, **WTQR** Greensboro, N.C., is removed after switching to Clear Channel Premium Choice programming.



WADE JESSEN
Senior Chart Manager
wade.jessen@billboard.com

MUSIC NOTES

Craig Campbell and Lady Antebellum have valuable TV slots in the offing. Lady A will perform new single "Just a Kiss" during the May 5 edition of Fox's "American Idol." The song was released to radio through PlayMPE on May 2. Campbell's "Family Man" will be heard in the HBO vampire series "True Blood" on July 3. That's the day before Campbell appears at Willie Nelson's Fourth of July Picnic at Billy Bob's in Fort Worth along with Jamey Johnson, Randy Houser, Lee Brice and Lukas Nelson & Promise of the Real.



A year after the Nashville flood, at least three venues overwhelmed by the water will mark the anniversary with live performances. The Grand Ole Opry House will host a flood-themed Opry edition on May 3 that includes Brad Paisley with Alabama, the Charlie Daniels Band, Trace Adkins, Dierks Bentley and Little Jimmy Dickens. Vince Gill, Will Hoge and the Nashville Symphony were scheduled to play a May 2 Voices Rising event at the Schermerhorn Symphony Center. And Keith Anderson headlines ReTune Nashville on May 3 at the SoundCheck facility with Chad Warrix, songwriter Don Schlitz, the Harters and GAC's Nan Kelley.

Taylor Swift is set to deliver the final performance of the 2011 Country Music Assn. Music Festival at Nashville's LP Field on June 12. The rest of the night's lineup includes Blake Shelton, Miranda Lambert, Darius Rucker, the Band Perry and the JaneDear Girls.

Sheryl Crow is recording a country album, according to the Minneapolis Star-Tribune. A double nominee at this year's CMT Music Awards, she also contributes to a track on Brad Paisley's album "This Is Country Music," due May 23. Crow hopes to release her project in 2012.

POWER PLAYLISTS

WBEE Rochester, NY PD: Billy Kidd Entercom: 585 423-2900		WBEE 92.5 Today's Country		KEGA Great Lake City, PD: Alan Hague APD/MD: Jon Watkins Simmons: 801 524-2600		101.5 The Eagle FRESH COUNTRY	
		Plays TW LW				Plays TW LW	
1	Zac Brown Band Colder Weather	46	43	1	Keith Urban Without You	67	59
2	Jerrold Niemann What Do You Want	46	43	2	Sara Evans A Little Bit Stronger	66	63
3	Thompson Square Are You Gonna Kiss	44	42	3	Thompson Square Are You Gonna Kiss	63	65
4	Rascal Flatts I Won't Let Go	43	40	4	Zac Brown Band Colder Weather	61	62
5	Darius Rucker This	43	42	5	Brad Paisley Feat. A Old Alabam	60	61
6	Jason Aldean With Kelly Don't You	43	43	6	Chris Young Tomorrow	57	24
7	Billy Currington Let Me Down Easy	42	40	7	Jason Aldean With Kelly Don't You	57	60
8	Kenny Chesney Live A Little	27	22	8	Kenny Chesney Live A Little	42	52
9	Brad Paisley Feat. A Old Alabam	26	15	9	Taylor Swift Mean	36	43
10	Keith Urban Without You	26	24	10	Billy Currington Let Me Down Easy	35	35
11	Ronnie Dunn Bleed Red	25	23	11	Darius Rucker This	35	45
12	Toby Keith Somewhere Else	25	24	12	Blake Shelton Who Are You When I'm	33	49
13	Little Big Town The Reason Why	24	21	13	Jerrold Niemann What Do You Want	31	23
14	Sara Evans A Little Bit Stronger	24	25	14	Ronnie Dunn Bleed Red	31	31
15	Rodney Atkins Farmer's Daughter	23	2	15	Kenny Chesney Somewhere With You	31	35
16	Lady Antebellum Our Kind Of Love	23	4	16	Miranda Lambert Heart Like Mine	30	28
17	Brett Eldredge Raymond	23	23	17	Luke Bryan Someone Else Calling You	28	19
18	Easton Corbin I Can't Love You Back	22	23	18	Lady Antebellum Hello World	28	30
19	Miranda Lambert Heart Like Mine	22	24	19	Toby Keith Somewhere Else	27	22
20	Craig Campbell Family Man	22	24	20	Sugarland Stuck Like Glue	26	19
21	Blake Shelton All About Tonight	21	2	21	Rascal Flatts I Won't Let Go	26	39
22	Sugarland Stuck Like Glue	20	3	22	Brad Paisley American Saturday Nigh	25	13
23	The JaneDear Girls Wildflower	20	20	23	Blake Shelton Honey Bee	24	26
24	Joe Nichols The Shape I'm In	20	21	24	Lady Antebellum American Honey	20	13
25	Chris Young Voices	19	17	25	Justin Moore If Heaven Wasn't So Fa	18	13
26	Tim McGraw Felt Good On My Lips	19	21	26	Lady Antebellum Need You Now	18	15
27	The Band Perry If I Die Young	18	2	27	Craig Campbell Family Man	18	15
28	Jerrold Niemann Lover, Lover	18	3	28	Keith Urban Kiss A Girl	18	20
29	Jason Aldean My Kinda Party	18	13	29	The Band Perry You Lie	18	24
30	Keith Urban Put You In A Song	18	16	30	Tim McGraw Where The Green Grass Gr	17	15

Billboard		COUNTRY		DIGITAL SONGS		nielsen SoundScan	
TW	LW	WKS ON CHART	TITLE ARTIST (IMPRINT/LABEL)	TW	LW	WKS ON CHART	TITLE ARTIST (IMPRINT/LABEL)
1	NEW		COUNTRY GIRL (SHAKE IT FOR ME) LUKE BRYAN (Capitol Nashville)	26	25	68	NEED YOU NOW LADY ANTEBELLUM (Capitol Nashville)
2	4	3	HONEY BEE BLAKE SHELTON (Warner Bros./WMN)	27	26	26	SOMEWHERE WITH YOU KENNY CHESNEY (BNA)
3	3	15	COLDER WEATHER ZAC BROWN BAND (Southern Ground/Atlantic/Bigger Picture)	28	27	20	COUNTRY BOY AARON LEWIS FEAT. GEORGE JONES & CHARLIE DANIELS (Soulshred)
4	1	25	DON'T YOU WANNA STAY JASON ALDEAN WITH KELLY CLARKSON (Broken Bow)	29	29	14	I CAN'T LOVE YOU BACK EASTON CORBIN (Mercury)
5	5	27	ARE YOU GONNA KISS ME OR NOT THOMPSON SQUARE (Stoney Creek)	30	31	42	THE CLIMB MILEY CYRUS (Walt Disney/Hollywood/Lyric Street)
6	6	32	A LITTLE BIT STRONGER SARA EVANS (RCA)	31	30	27	BACK TO DECEMBER TAYLOR SWIFT (Big Machine)
7	2	2	OLD ALABAMA BRAD PAISLEY FEAT. ALABAMA (Arista Nashville)	32	NEW		HOW GREAT THOU ART (LIVE FROM THE GRAND OLE OPRY) CARRIE UNDERWOOD (Opry/RCA)
8	11	6	DIRT ROAD ANTHEM JASON ALDEAN (Broken Bow)	33	32	29	WHO ARE YOU WHEN I'M NOT LOOKING BLAKE SHELTON (Reprise/WMN)
9	8	16	I WON'T LET GO RASCAL FLATTS (Big Machine)	34	34	36	MY KINDA PARTY JASON ALDEAN (Broken Bow)
10	7	11	MEAN TAYLOR SWIFT (Big Machine)	35	36	67	CHICKEN FRIED ZAC BROWN BAND (Home Grown/Atlantic/Bigger Picture)
11	9	12	YOU LIE THE BAND PERRY (Republic Nashville)	36	44	5	LOOK IT UP ASHTON SHEPHERD (MCA Nashville)
12	12	10	TOMORROW CHRIS YOUNG (RCA)	37	48	4	AM I THE ONLY ONE DIERKS BENTLEY (Capitol Nashville)
13	10	12	HEART LIKE MINE MIRANDA LAMBERT (Columbia)	38	37	58	THE HOUSE THAT BUILT ME MIRANDA LAMBERT (Columbia)
14	13	7	GIVE IN TO ME GARRETT HEDLUND & LEIGHTON MEESTER (Screen Gems Productions/Madison Gate)	39	49	7	LIVE A LITTLE KENNY CHESNEY (BNA)
15	16	45	IF I DIE YOUNG THE BAND PERRY (Republic Nashville)	40	35	5	LIFE IS A HIGHWAY RASCAL FLATTS (Walt Disney/Lyric Street)
16	19	7	HOMEBOY ERIC CHURCH (EMI Nashville)	41	28	16	LITTLE MISS SUGARLAND (Mercury)
17	15	8	WITHOUT YOU KEITH URBAN (Capitol Nashville)	42	38	25	FELT GOOD ON MY LIPS TIM MCGRAW (Curb)
18	22	7	CRAZY GIRL ELI YOUNG BAND (Republic Nashville)	43	RE-ENTRY		COUNTRY STRONG GWYNETH PALTROW (RCA)
19	14	40	STUCK LIKE GLUE SUGARLAND (Mercury)	44	43	4	SAVE A HORSE (RIDE A COWBOY) BIG & RICH (Warner Bros./WMN)
20	24	11	BLEED RED RONNIE DUNN (Arista Nashville)	45	46	4	TIMING IS EVERYTHING GARRETT HEDLUND (Screen Gems Productions/Madison Gate)
21	18	27	WHAT DO YOU WANT JERROD NIEMANN (Sea Gayle/Arista Nashville)	46	39	37	AS SHE'S WALKING AWAY ZAC BROWN BAND FEAT. ALAN JACKSON (Southern Ground/Atlantic/Bigger Picture)
22	21	7	IF HEAVEN WASN'T SO FAR AWAY JUSTIN MOORE (Valory)	47	47	4	FAMILY MAN CRAIG CAMPBELL (Acoustic Peach/Bigger Picture)
23	20	19	THIS DARIUS RUCKER (Capitol Nashville)	48	50	55	TOES ZAC BROWN BAND (Home Grown/Atlantic/Bigger Picture)
24	17	2	BAREFOOT BLUE JEAN NIGHT JAKE OWEN (RCA)	49	RE-ENTRY		SUMMERTIME KENNY CHESNEY (BNA)
25	23	25	LET ME DOWN EASY BILLY CURRINGTON (Mercury)	50	RE-ENTRY		FROM A TABLE AWAY SUNNY SWEENEY (Republic Nashville)

Top-selling paid download country songs compiled from sales reports collected and provided by Nielsen SoundScan for week ending April 24, 2011. Charts update weekly on Thursdays at www.Billboard.biz/charts. Copyright 2011, Prometheus Global Media, LLC and Nielsen SoundScan, Inc. All rights reserved.



Dierks Bentley hit the ice with WBWN Bloomington, Ill., morning personalities Kevin Bessler and JD Justice for a hockey scrimmage with the Bloomington Prairie Thunder hockey team and the city's police and fire departments. From left are Bessler, Bentley and Justice.

MAY 2 2011		Billboard			HOT COUNTRY SONGS					AIRPLAY MONITORED BY nielsen BDS
TW	LW	WKS ON CHART	TITLE/IMPRINT/LABEL	ARTIST	AUDIENCE (IN MILLIONS)		PLAYS			
					TW	+/-	TW	+/-	RANK	
1	2	33	A LITTLE BIT STRONGER RCA	Sara Evans	35.213	+1.278	5379	170	1	
2	3	19	HEART LIKE MINE Columbia	Miranda Lambert	33.832	+0.612	5214	53	2	
3	1	13	LIVE A LITTLE BNA	Kenny Chesney	33.510	-1.377	5175	-191	3	
4	4	32	WHAT DO YOU WANT Sea Gayle/Arista Nashville	Jerrod Niemann	30.258	+0.045	4782	34	4	
5	10	8	OLD ALABAMA Arista Nashville	Brad Paisley Featuring Alabama	27.992	+3.798	4599	731	6	
6	6	17	I WON'T LET GO Big Machine	Rascal Flatts	27.936	+0.280	4610	61	5	
7	9	13	WITHOUT YOU Capitol Nashville	Keith Urban	26.270	+1.179	3905	180	7	
8	5	25	THIS Capitol Nashville	Darius Rucker	23.315	-6.214	3434	-1116	9	
9	12	9	MEAN Big Machine	Taylor Swift	21.997	+1.346	3363	105	11	
10	11	21	YOU LIE Republic Nashville	The Band Perry	21.770	+0.686	3462	121	8	
11	13	13	BLEED RED Arista Nashville	Ronnie Dunn	20.120	-0.255	3389	4	10	
12	17	12	IF HEAVEN WASN'T SO FAR AWAY Valory	Justin Moore	18.751	+1.794	3123	347	14	
13	15	12	TOMORROW RCA	Chris Young	18.725	+1.322	3219	229	12	
14	14	40	FAMILY MAN Bigger Picture	Craig Campbell	18.700	-0.427	3142	-17	13	
15	16	25	I CAN'T LOVE YOU BACK Mercury	Easton Corbin	17.870	+0.812	2984	93	15	
16	20	4	HONEY BEE Warner Bros./WMN	Blake Shelton	17.716	+3.887	2812	568	17	
17	18	11	SOMEWHERE ELSE Show Dog-Universal	Toby Keith	16.074	+0.452	2856	149	16	
18	19	7	COUNTRY GIRL (SHAKE IT FOR ME) Capitol Nashville	Luke Bryan	15.693	+1.234	2686	364	18	
19	22	7	TEENAGE DAUGHTERS Republic Nashville	Martina McBride	10.928	+0.720	1682	143	23	
20	21	18	LOOK IT UP MCA Nashville	Ashton Shepherd	10.836	+0.375	2201	56	19	
21	25	15	DIRT ROAD ANTHEM Broken Bow	Jason Aldean	10.579	+2.384	1770	426	22	
22	23	6	AM I THE ONLY ONE Capitol Nashville	Dierks Bentley	10.181	+1.671	1833	293	20	
23	24	11	HOMEBOY EMI Nashville	Eric Church	9.519	+1.218	1784	175	21	
24	26	31	RAYMOND Atlantic/WAR	Brett Eldredge	7.997	+0.289	1462	7	25	
25	27	27	I WOULDN'T BE A MAN MCA Nashville	Josh Turner	7.801	+0.133	1542	17	24	
26	30	6	JUST FISHIN' Show Dog-Universal	Trace Adkins	6.810	+1.464	1214	205	28	
27	28	20	LAST NIGHT AGAIN Big Machine	Steel Magnolia	6.723	+0.492	1378	105	26	
28	29	23	WON'T BE LONELY LONG Columbia	Josh Thompson	5.839	+0.269	1312	46	27	
29	34	6	BAREFOOT BLUE JEAN NIGHT RCA	Jake Owen	5.057	+1.746	915	328	32	
30	32	11	CRAZY GIRL Republic Nashville	Eli Young Band	4.798	+0.391	928	105	31	



iTunes Sales 30% increase to 47,132!

JASON ALDEAN
DIRT ROAD ANTHEM

21 BB 23 MB

JASON'S FASTEST MOVING SINGLE TO DATE!

48 DEBUT IN MB
5 place move from **53** to **48** in BB!

JAMES WESLEY
DIDN'T I

60 stations already playing including new adds from: **WWYZ, WCTO, WQYK, WTGE, KATM, KATC, KWNR**
First week iTunes doubled first week on Real!

MAY 2 2011		Billboard®		HOT COUNTRY SONGS					AIRPLAY MONITORED BY nielsen BDS	
TW	LW	WKS ON CHART	TITLE/IMPRINT/LABEL	ARTIST	AUDIENCE (IN MILLIONS)		PLAYS			
					TW	+/-	TW	+/-	RANK	
31	31	28	BEAUTIFUL EVERY TIME Curb	Lee Brice	4.723	-0.057	1158	7	29	
32	33	17	LOVE DON'T RUN Curb	Steve Holy	3.941	+0.154	992	57	30	
33	35	3	KNEE DEEP Southern Ground/Atlantic/Bigger Picture ★ Most Added ★ Zac Brown Band Feat. Jimmy Buffett		3.673	+1.059	531	221	34	
34	36	11	A BUNCHA GIRLS Warner Bros./WAR	Frankie Ballard	2.228	+0.234	525	26	35	
35	41	2	TAKE A BACK ROAD Curb	Rodney Atkins	1.749	+0.305	312	152	41	
36	45	3	LOVE DONE GONE Mercury	Billy Currington	1.718	+0.421	283	120	43	
37	54	2	TONIGHT Mercury	Sugarland	1.670	+0.970	241	119	48	
38	37	13	LET IT RAIN MCA Nashville	David Nail	1.645	-0.245	559	-45	33	
39	39	16	1,000 FACES Mercury	Randy Montana	1.595	+0.055	515	36	36	
40	40	4	COUNTRY MUST BE COUNTRY WIDE Valory	Brantley Gilbert	1.595	+0.136	248	47	47	
41	38	13	SONGS LIKE THIS 19/Arista Nashville	Carrie Underwood	1.437	-0.145	182	-19	53	
42	42	11	SHOTGUN GIRL Warner Bros./WMN	The JaneDear Girls	1.379	+0.019	363	9	38	
43	43	7	MR. BARTENDER Columbia	Bradley Gaskin	1.369	+0.039	351	9	39	
44	44	9	THE REASON WHY Capitol Nashville	Little Big Town	1.288	-0.033	385	-9	37	
45	46	8	WANNA TAKE YOU HOME Emblem/Warner Bros./WAR	Gloriana	1.225	+0.187	275	35	44	
46	47	6	AMEN Big Machine	Edens Edge	1.060	+0.120	326	-6	40	
47	48	3	WHEN LOVE GETS A HOLD OF YOU Starstruck/Valory	Reba	0.907	+0.047	240	41	49	
48	53	3	DIDN'T I Broken Bow	James Wesley	0.883	+0.175	312	52	42	
49	50	10	SOMETHING BETTER Warner Bros./WMN	The Dirt Drifters	0.868	+0.018	275	-18	45	
50	52	13	COUNTRY BOY Stroudavarious Aaron Lewis Featuring George Jones & Charlie Daniels		0.723	-0.022	188	0	51	
51	49	13	I'D LOVE TO BE YOUR LAST Redneck	Gretchen Wilson	0.680	-0.172	178	-38	55	
52	55	7	MARY WAS THE MARRYING KIND MCA Nashville	Kip Moore	0.680	+0.025	250	19	46	
53	56	5	STAY UP LATE Curb	Heidi Newfield	0.606	-0.042	215	-2	50	
54	59	2	IN GOD'S TIME Show Dog-Universal	Randy Houser	0.600	+0.191	181	61	54	
55	57	11	COUNTRY THANG Average Joe's	Colt Ford	0.545	-0.088	169	-12	56	
56	58	2	I'M DOING ALRIGHT DMG/Nine North	Jacob Lyda	0.433	-0.006	186	0	52	
57	NEW	1	GENERATION LOVE Capitol Nashville ★ Hot Shot Debut ★ Jennette McCurdy		0.418	+0.080	92	47	60	
58	NEW	1	COLLIDE Top Dog/Atlantic/Bigger Picture Kid Rock Featuring Sheryl Crow & Bob Seger		0.394	+0.200	86	38	-	
59	RE-ENTRY	4	OH, TONIGHT Pretty Damn Tough Josh Abbott Band Featuring Kacey Musgraves		0.384	+0.007	58	-9	-	
60	NEW	1	STORM WARNING Atlantic/WMN Hunter Hayes		0.345	+0.045	53	11	-	



STEALING ★ ANGELS

“PAPER HEART”

PRODUCED BY PAUL WORLEY
WRITTEN BY GORDE SAMPSON, JILLARY LINDSEY AND STEVE McEWEN

WATCH NOW

**KNIX, KIXZ, KUPL, WCTQ,
WTGE, WTQR, WWQM, KSOP,
KBUL, WQHK, KNTY, WIWF,
WKSJ, WKXC, KJJY, KRST,
WUSH, KWRN, KEGA, WXBM,
KKYT, KUBL, WIVK**



SKYVILLE
RECORDS

MAY
2
2011



AIRPLAY
MONITORED BY
nielsen
BDS

COUNTRY

MOST ADDED™

TITLE/LABEL	ARTIST	ADDS
KNEE DEEP Southern Ground/Atlantic/Bigger Picture	Zac Brown Band Feat. Jimmy Buffett	26
TAKE A BACK ROAD	Curb Rodney Atkins	16
DIRT ROAD ANTHEM	Broken Bow Jason Aldean	15
JUST FISHIN'	Show Dog-Universal Trace Adkins	15
LOVE DONE GONE	Mercury Billy Currington	15
BAREFOOT BLUE JEAN NIGHT	RCA Jake Owen	13
AM I THE ONLY ONE	Capitol Nashville Dierks Bentley	9
COUNTRY MUST BE COUNTRY WIDE	Valory Brantley Gilbert	9
STAYING'S WORSE THAN LEAVING	Republic Nashville Sunny Sweeney	9
GENERATION LOVE	Capitol Nashville Jennette McCurdy	7

MOST INCREASED AUDIENCE

TITLE/LABEL	ARTIST	GAIN (IN MILLIONS)
HONEY BEE	Warner Bros./WMN Blake Shelton	+3.887
OLD ALABAMA	Arista Nashville Brad Paisley Featuring Alabama	+3.798
DIRT ROAD ANTHEM	Broken Bow Jason Aldean	+2.384
IF HEAVEN WASN'T SO FAR AWAY	Valory Justin Moore	+1.794
BAREFOOT BLUE JEAN NIGHT	RCA Jake Owen	+1.746
AM I THE ONLY ONE	Capitol Nashville Dierks Bentley	+1.671
JUST FISHIN'	Show Dog-Universal Trace Adkins	+1.464
MEAN	Big Machine Taylor Swift	+1.345
TOMORROW	RCA Chris Young	+1.322
A LITTLE BIT STRONGER	RCA Sara Evans	+1.278

MOST INCREASED PLAYS

TITLE/LABEL	ARTIST	GAIN
OLD ALABAMA	Arista Nashville Brad Paisley Featuring Alabama	+731
HONEY BEE	Warner Bros./WMN Blake Shelton	+568
DIRT ROAD ANTHEM	Broken Bow Jason Aldean	+426
COUNTRY GIRL (SHAKE IT FOR ME)	Capitol Nashville Luke Bryan	+364
IF HEAVEN WASN'T SO FAR AWAY	Valory Justin Moore	+347
BAREFOOT BLUE JEAN NIGHT	RCA Jake Owen	+328
AM I THE ONLY ONE	Capitol Nashville Dierks Bentley	+293
TOMORROW	RCA Chris Young	+229
KNEE DEEP	Southern Ground/Atlantic/Bigger Picture Zac Brown Band Feat. Jimmy Buffett	+221
JUST FISHIN'	Show Dog-Universal Trace Adkins	+205

COUNTRY INDICATOR

MOST ADDED™

TITLE/LABEL	ARTIST	ADDS
KNEE DEEP Southern Ground/Atlantic/Bigger Picture	Zac Brown Band Feat. Jimmy Buffett	33
TAKE A BACK ROAD	Curb Rodney Atkins	19
LOVE DONE GONE	Mercury Billy Currington	17
TONIGHT	Mercury Sugarland	11
STAYING'S WORSE THAN LEAVING	Republic Nashville Sunny Sweeney	10
BAREFOOT BLUE JEAN NIGHT	RCA Jake Owen	9
IN GOD'S TIME	Show Dog-Universal Randy Houser	9
DIDN'T I	Broken Bow James Wesley	6
HOMEBOY	EMI Nashville Eric Church	4
DIRT ROAD ANTHEM	Broken Bow Jason Aldean	4

MOST INCREASED AUDIENCE

TITLE/LABEL	ARTIST	GAIN (IN MILLIONS)
OLD ALABAMA	Arista Nashville Brad Paisley Feat. Alabama	+0.978
KNEE DEEP	Southern Ground/Atlantic/Bigger Picture Zac Brown Band Feat. Jimmy Buffett	+0.941
HONEY BEE	Warner Bros./WMN Blake Shelton	+0.859
DIRT ROAD ANTHEM	Broken Bow Jason Aldean	+0.597
TAKE A BACK ROAD	Curb Rodney Atkins	+0.573
BAREFOOT BLUE JEAN NIGHT	RCA Jake Owen	+0.547
AM I THE ONLY ONE	Capitol Nashville Dierks Bentley	+0.503
MEAN	Big Machine Taylor Swift	+0.500
COUNTRY GIRL (SHAKE IT FOR ME)	Capitol Nashville Luke Bryan	+0.487
TEENAGE DAUGHTERS	Republic Nashville Martina McBride	+0.453

MOST INCREASED PLAYS

TITLE/LABEL	ARTIST	GAIN
OLD ALABAMA	Arista Nashville Brad Paisley Feat. Alabama	+433
KNEE DEEP	Southern Ground/Atlantic/Bigger Picture Zac Brown Band Feat. Jimmy Buffett	+416
HONEY BEE	Warner Bros./WMN Blake Shelton	+371
DIRT ROAD ANTHEM	Broken Bow Jason Aldean	+283
TAKE A BACK ROAD	Curb Rodney Atkins	+280
LOVE DONE GONE	Mercury Billy Currington	+249
COUNTRY GIRL (SHAKE IT FOR ME)	Capitol Nashville Luke Bryan	+245
BAREFOOT BLUE JEAN NIGHT	RCA Jake Owen	+238
MEAN	Big Machine Taylor Swift	+234
AM I THE ONLY ONE	Capitol Nashville Dierks Bentley	+192

BILLBOARD HOT COUNTRY SONGS PANEL – 127 STATIONS

Akron, Ohio	WQMX	Detroit	WYCD	Little Rock, Ark.	KSSN	Roanoke, Va.	WSLC
Albany, N.Y.	WGNA	Ft. Myers, Fla.	WCKT	Los Angeles	KKGO	Rochester, N.Y.	WBEE
Albuquerque, N.M.	KRST		WWGR	Louisville, Ky.	WAMZ	Sacramento, Calif.	KNCI
Allentown, Pa.	WCTO	Ft. Wayne, Ind.	WQHK	Madison, Wis.	WWQM		KNTY
Asheville, N.C.	WKSF	Fresno, Calif.	KSKS	McAllen, Texas	KTEX	St. Louis	KSD
Atlanta	WKHX	Gainesville, Fla.	WOGK	Memphis	WGXX		WIL
	WUBL	Grand Rapids, Mich.	WBCT	Miami	WKIS	Salt Lake City	KEGA
Augusta, Ga.	WKXC		WTNR	Milwaukee	WMIL		KSOP
Austin, Texas	KASE	Greensboro, N.C.	WPAW	Minneapolis, Minn.	KEEY		KUBL
Bakersfield, Calif.	KUZZ	Greenville, S.C.	WESC	Mobile, Ala.	WKSJ	San Antonio, Texas	KAJA
Baltimore	WPOC		WSSL	Modesto, Calif.	KATM		KCYA
Baton Rouge, La.	WYNK	Harrisburg, Pa.	WRBT	Monmouth/Ocean, N.J.	WKMK	San Diego	KSON
Birmingham, Ala.	WDXB	Hartford, Conn.	WWYZ	Nashville	WKDF	San Jose, Calif.	KRTY
Boise, Idaho	KIZN	Houston	KILT		WSIX	Santa Rosa, Calif.	KFGY
Boston	WKLB		KKBQ	New Bern, N.C.	WRNS	Seattle	KKWF
Buffalo, N.Y.	WYRK	Huntsville, Ala.	WDRM	Norfolk, Va.	KGH	Shreveport, La.	KMP5
Charleston, S.C.	WEZL	Indianapolis	WFMS	Oklahoma City, Okla.	KJKE	Spokane, Wash.	KKKS
Charleston, W. Va.	WQBE		WLHK		KTST	Springfield, Mass.	KDRK
Charlotte, N.C.	WKKT	Jackson, Miss.	WUSJ	Omaha, Neb.	KXKT	Springfield, Mo.	WPRX
	WSOC	Jacksonville, Fla.	WCNE	Pensacola, Fla.	WXGM	Syracuse, N.Y.	KTTS
Chattanooga, Tenn.	WUSY	Johnson City, Tenn.	WBQO	Philadelphia	WXIU	Tampa, Fla.	WBBS
Chicago	WUSN	Kansas City	KBEQ	Phoenix	KMLE		WFUS
Cincinnati	WUBE		KFKF		KNIX		WQYK
Cleveland	WCAR		WDAF	Pittsburgh	WDSY	Tucson, Ariz.	KIIM
Colorado Springs, Colo.	KATC	Knoxville, Tenn.	WIVK		WOGI	Tulsa, Okla.	KVOO
Columbia, S.C.	WCOS	Lafayette, La.	KMDL	Portland, Ore.	KUPL	Washington, D.C.	WMZQ
Columbus, Ohio	WCOL	Lakeland, Fla.	WPCV		KWJJ	West Palm Beach, Fla.	WIRK
Dallas	KPLX	Lancaster, Pa.	WIOV	Portsmouth, N.H.	WOKQ	Wichita, Kan.	KFDI
	KSCS	Lansing, Mich.	WITL	Providence, R.I.	WCKT	Wilkes Barre, Pa.	WGGY
Denver	KWOF	Las Vegas	KCYE	Raleigh, N.C.	WQDR	Wilmington, Del.	WCXY
	KYGO		KWNR	Reno, Nev.	KBUL	York, Pa.	WGTY
Des Moines, Iowa	KJYY	Lexington, Ky.	WBUL	Riverside, Calif.	KFRG		

MAY
2
2011



AIRPLAY
MONITORED BY
nielsen
BDS

NEW AND ACTIVE

TITLE/LABEL	ARTIST	TOTAL AUDIENCE	TOTAL STATIONS	ADDS
I GOT YOU Stoney Creek	Thompson Square	0.343	5	2
FIVE MORE MINUTES Curb	Ashley Gearing	0.316	22	1
YOU AND TEQUILA BNA	Kenny Chesney Feat. Grace Potter	0.222	3	3
MAYBE TONIGHT Emrose/Stroudavarious	Margaret Durante	0.216	12	1
WHEN THE SMOKE CLEARS Black River	Due West	0.197	12	2
PAPER HEART Skyville	Stealing Angels	0.133	16	3

INDICATOR NEW AND ACTIVE

TITLE/LABEL	ARTIST	TOTAL PLAYS	TOTAL STATIONS	ADDS
MAYBE TONIGHT Emrose/Stroudavarious	Margaret Durante	91	10	2
GENERATION LOVE Capitol Nashville	Jennette McCurdy	89	12	4
I GOT YOU Stoney Creek	Thompson Square	83	9	4
WHERE WOULD YOUR HEART BE Identical/Turnpike	Tonja Rose	81	7	0
FIVE MORE MINUTES Curb	Ashley Gearing	76	7	0
STAY UP LATE Curb	Heidi Newfield	65	7	1

RECURRENTS

TW	TITLE/LABEL	ARTIST	TOTAL AUD. (IN MILLIONS)
1	ARE YOU GONNA KISS ME OR NOT Stoney Creek	Thompson Square	21.862
2	DON'T YOU WANNA STAY Broken Bow	Jason Aldean With Kelly Clarkson	21.172
3	COLDER WEATHER Southern Ground/Antlantic/Bigger Picture	Zac Brown Band	20.495
4	LET ME DOWN EASY Mercury	Billy Currington	12.768
5	SOMEWHERE WITH YOU BNA	Kenny Chesney	11.445
6	FELT GOOD ON MY LIPS Curb	Tim McGraw	11.357
7	WHO ARE YOU WHEN I'M NOT LOOKING Reprise/WMN	Blake Shelton	10.715
8	AS SHE'S WALKING AWAY Southern Ground/Antlantic/Bigger Picture	Zac Brown Band Feat. Alan Jackson	10.512
9	SOMEONE ELSE CALLING YOU BABY Capitol Nashville	Luke Bryan	10.491
10	VOICES RCA	Chris Young	10.284

GOING FOR ADDS

5/9

GLEN TEMPLETON
I Could Be The One
Capstone

GREG HANNA
Makin' Love Real
Pheromone

JESSE KEITH WHITLEY
Kentucky Thunder
Octabrook

THOMPSON SQUARE
I Got You
Stoney Creek

ZAC BROWN BAND FEAT. JIMMY BUFFETT
Knee Deep
Southern Ground/
Atlantic/Bigger Picture

5/16

BURNS & POE
Second Chance
Blue Steel

DAVID ADAM BYRNES
She Only
Wanted Flowers
Better Angels

HUNTER HAYES
Storm Warning
Atlantic/WMN

5/23

SHELLY RANN
Hell On Heels
Mirror Lake

THE LUNABELLES
A Place To Shine
BNA



TEXAS REGIONAL RADIO REPORT

WEEK ENDING
MAY
1
2011

TW	LW	WKS ON CHART	TITLE (LABEL)	ARTIST	TW	LW	WKS ON CHART	TITLE (LABEL)	ARTIST
1	1	12	THE CRICKET SONG (Independent) ** 2 Weeks at 1 **	Rich O'Toole	16	18	10	GONE AIN'T FAR ENOUGH (Carved)	No Justice
2	2	15	LORD I HOPE THIS DAY IS GOOD (Smith)	Brandon Rhyder	17	20	6	LEAD ME ON (Independent)	Cory Morrow
3	4	14	I HOLD THE BOTTLE YOU HOLD THE WHEEL (Yep Roc)	Reckless Kelly	18	11	14	LET ME LOVE YOU (Independent)	Casey Donahew Band
4	3	11	CRAZY GIRL (Republic Nashville)	Eli Young Band	19	17	15	KMAG YOYO (Lost Highway)	Hayes Carll
5	5	16	YOU'RE NOT LOOKIN' FOR (Smith)	Deryl Dodd	20	21	12	BAR, GUITAR AND HONKY TONK CROWD (Independent)	Whiskey Myers
6	7	10	HALFWAY TO HOUSTON (All-Tex)	James Lann	21	19	20	GIRL IN A TRUCK (Independent)	Kevin Fowler
7	6	15	LONG WAY TO GET (Blind Nello)	Max Stalling	22	25	12	SHE'S THE ONLY REASON (Winding Road)	Bart Crow Band
8	9	11	THIS AIN'T THE FIRST TIME (Smith)	Eleven Hundred Springs	23	22	11	JESUS AND JOHNNY CASH (Winding Road)	Jarrod Birmingham
9	10	11	BEST FOR LAST (BIG Label)	Aaron Watson	24	23	16	OUTLAW BAND (Proud Souls/Apex)	Jason Boland & The Stragglers
10	13	10	BLOOD RED LINCOLN (Independent)	Bleu Edmondson	25	27	47	MY GIRL (Blackland)	John David Kent
11	12	14	TEXAS KIND OF WAY (Independent)	Cody Johnson	26	28	15	BREAKIN' STUFF (Propel)	George Ducas
12	8	13	INTERSTATE (MCA Nashville)	Randy Rogers Band	27	24	20	EASIER BY NOW (Winding Road)	Jamie Richards
13	14	16	BLUE EYED ANGELS (Carnival)	Rob Baird	28	29	10	WON'T LET IT SHOW (Independent)	Mike Ryan
14	15	15	LIE BABY LIE (Apex Nashville)	Sean McConnell	29	37	12	SILENCE IN ME (Winding Road)	Six Market BLVD
15	16	12	SAY IT AGAIN (Smith)	Tejas Brothers	30	31	14	FOR A WHILE (Independent)	Ryan Beaver

Texas Regional Radio Report Top 100 is compiled from weekly online playlist reports from 87 radio stations located in Texas and surrounding states, including reports from specialty shows, internet and satellite radio outlets. Songs are ranked by total plays. For tracking, complete chart methodology and more information, visit www.texasregionalradio.com, or contact Dave Smith at 817-283-7984. Copyright 2011, Texas Regional Radio Report

MAY 2 2011		Billboard		COUNTRY INDICATOR				
TW	LW	WKS ON CHART	TITLE/IMPRINT/LABEL	ARTIST	PLAYS		AUDIENCE (IN MILLIONS)	
					TW	+/-		
1	1	18	HEART LIKE MINE Columbia	★★ No. 1 (3 weeks) ★★	Miranda Lambert	3944	+18	8.111
2	4	18	I WON'T LET GO Big Machine		Rascal Flatts	3771	+86	7.645
3	2	12	LIVE A LITTLE BNA		Kenny Chesney	3756	-123	7.600
4	3	31	A LITTLE BIT STRONGER RCA		Sara Evans	3747	-21	7.337
5	6	8	OLD ALABAMA Arista Nashville	★ Most Increased Plays ★	Brad Paisley Feat. Alabama	3727	+433	7.547
6	5	13	WITHOUT YOU Capitol Nashville		Keith Urban	3417	+108	6.824
7	8	18	YOU LIE Republic Nashville		The Band Perry	3150	+106	6.341
8	9	14	BLEED RED Arista Nashville		Ronnie Dunn	3068	+30	6.111
9	13	11	SOMEWHERE ELSE Show Dog-Universal		Toby Keith	2814	+165	5.504
10	11	26	I CAN'T LOVE YOU BACK Mercury		Easton Corbin	2771	+60	5.793
11	12	12	TOMORROW RCA		Chris Young	2753	+76	5.571
12	15	8	MEAN Big Machine		Taylor Swift	2680	+234	5.377
13	14	12	IF HEAVEN WASN'T SO FAR AWAY Valory		Justin Moore	2663	+131	5.432
14	17	5	HONEY BEE Warner Bros./WMN		Blake Shelton	2332	+371	4.673
15	16	7	COUNTRY GIRL (SHAKE IT FOR ME) Capitol Nashville		Luke Bryan	2303	+245	4.586
16	19	6	AM I THE ONLY ONE Capitol Nashville		Dierks Bentley	1958	+192	3.866
17	18	17	LOOK IT UP MCA Nashville		Ashton Shepherd	1940	+36	4.012
18	21	7	TEENAGE DAUGHTERS Republic Nashville		Martina McBride	1802	+149	3.730
19	22	7	JUST FISHIN' Show Dog-Universal		Trace Adkins	1724	+163	3.469
20	20	28	I WOULDN'T BE A MAN MCA Nashville		Josh Turner	1708	+3	3.533
21	23	10	HOMEBOY EMI Nashville		Eric Church	1639	+142	3.274
22	24	5	DIRT ROAD ANTHEM Broken Bow		Jason Aldean	1526	+283	3.233
23	25	31	RAYMOND Atlantic/WAR		Brett Eldredge	1124	+16	2.204
24	26	26	WON'T BE LONELY LONG Columbia		Josh Thompson	1123	+57	2.583
25	27	18	LAST NIGHT AGAIN Big Machine		Steel Magnolia	1114	+57	2.213
26	28	11	CRAZY GIRL Republic Nashville		Eli Young Band	1113	+76	2.074
27	31	4	BAREFOOT BLUE JEAN NIGHT RCA		Jake Owen	897	+238	1.781
28	29	16	LOVE DON'T RUN Curb		Steve Holy	882	+90	1.792
29	34	3	KNEE DEEP Southern Ground/Atlantic/Bigger Picture	★ Most Added ★	Zac Brown Band Feat. Jimmy Buffett	861	+416	1.723
30	30	28	BEAUTIFUL EVERY TIME Curb		Lee Brice	729	-21	1.554

BILLBOARD COUNTRY INDICATOR PANEL – 100 STATIONS

Abilene, Texas	KEAN	Evansville, Ind.	WKDQ	Lubbock, Texas	KLLL	Sheboygan, Wis.	WBFM
Alexandria, La.	KRRV	Fargo, N.D.	KVOX	Lufkin, Texas	KYKS	Sioux City, Iowa	KSUX
Amarillo, Texas	KGNC	Fayetteville, N.C.	WKML	Mason City, Iowa	KIAI	South Bend, Ind.	WBYT
Atlantic City, N.J.	WPUR	Flagstaff, Ariz.	KAFF	Medford, Ore.	KRWQ	Terre Haute, Ind.	WTHI
Beaumont, Texas	KYKR	Flint, Mich.	WFBE	Meridian, Miss.	WOKK	Topeka, Kan.	WIBW
Beckley, W. Va.	WJLS	Florence, Ala.	WXFL	Morgantown, W. Va.	WKWK	Traverse City, Mich.	WTCM
Billings, Mont.	KCTR	Florence, S.C.	WEGX	Muncie, Ind.	WMDH	Tupelo, Miss.	WWZD
Biloxi, Miss.	WZKX	Ft. Smith, Ark.	KTCS	Muskegon, Mich.	WMUS	Tuscaloosa, Ala.	WFFN
Binghamton, N.Y.	WHWK	Frederick, Md.	WFRE	Myrtle Beach, S.C.	WGTR	Tyler, Texas	KYKX
Bloomington, Ill.	WBWN	Fredericksburg, Va.	WFLS	New London, Conn.	WCTY	Utica, N.Y.	WFRG
Bluefield, W. Va.	WHKX	Green Bay, Wis.	WNCY	Odessa, Texas	KHKX	Visalia, Calif.	KJUG
Burlington, Vt.	WOKO	Hagerstown, Md.	WAYZ	Palm Springs, Calif.	KPLM	Waco, Texas	WACO
Charleston, W. Va.	WKWS	Hot Springs, Ark.	KQUS	Panama City, Fla.	WPAP	Wausau, Wis.	WDEZ
College Station, Texas	KAGG	Huntington, Ky.	WDGG	Portland, Maine	WPOR	Wheeling, W. Va.	WOVK
Columbus, Ga.	WKCN	Huntington, W. Va.	WTCR		WTHT	Williamsport, Pa.	WILQ
Cookeville, Tenn.	WGSQ	Idaho Falls, Idaho	KTHK	Poughkeepsie, N.Y.	WRWD	Yakima, Wash.	KXDD
Corpus Christi, Texas	KFTX	Jonesboro, Ark.	KDXY	Rapid City, S.D.	KOUT	Youngstown, Ohio	WWGY
	KRYS	Joplin, Mo.	KIXQ	Rocky Mount, N.C.	WDWG	Citadel Media	TODAY'S BEST COUNTRY
Dothan, Ala.	WTVY	Kalamazoo, Mich.	WNWN	Saginaw, Mich.	WCEN	Dial Global	HOT COUNTRY
Duluth, Minn.	KKCB	Kalispell, Mont.	KDBR		WKCCQ		MAINSTREAM COUNTRY
Eau Claire, Wis.	WAXX	Lafayette, Ind.	WKOA	Salina, Kan.	KYEZ	Music Choice	TODAY'S COUNTRY
	WQRB	Lake Havasu/Bullhead City, Ariz.	KFLG	Salisbury, Md.	WKTT	Sirius XM	THE HIGHWAY
Elizabeth City, N.C.	WRSF	Laurel, Miss.	WBBN	San Angelo, Texas	KGKL		
Erie, Pa.	WTWF	Lebanon, N.H.	WXXX	San Luis Obispo, Calif.	KKJG		
	WXTA	Lincoln, Neb.	KFGE	Santa Barbara, Calif.	KRAZ		
Eugene, Ore.	KKNU		KZKX	Santa Maria, Calif.	KSNI		

MAY 2 2011		Billboard COUNTRY INDICATOR					
TW	LW	WKS ON CHART	TITLE/IMPRINT/LABEL	ARTIST	PLAYS		AUDIENCE (IN MILLIONS)
					TW	+/-	TW
31	32	8	THE REASON WHY Capitol Nashville	Little Big Town	552	+38	0.868
32	49	2	TAKE A BACK ROAD Curb	Rodney Atkins	530	+280	1.005
33	44	3	LOVE DONE GONE Mercury	Billy Currington	518	+249	0.963
34	33	7	MR. BARTENDER Columbia	Bradley Gaskin	505	+3	1.030
35	36	4	WHEN LOVE GETS A HOLD OF YOU Starstruck/Valory	Reba	475	+121	0.992
36	48	2	TONIGHT Mercury	Sugarland	436	+184	0.840
37	35	14	WHATEVER IT TAKES Evergreen	DJ Miller	418	+10	0.707
38	38	13	LET IT RAIN MCA Nashville	David Nail	354	+24	0.684
39	37	9	HARD ROAD Ride	Steve Azar	343	+5	0.629
40	47	3	DIDN'T I Broken Bow	James Wesley	327	+67	0.584
41	39	12	HARD TIME MOVIN' ON Gecko	David Bradley Feat. Rodney Crowell	309	+9	0.547
42	43	13	I'M DOING ALRIGHT DMG/Nine North	Jacob Lyda	301	+15	0.602
43	40	10	SOMETHING TO DO WITH YOUR HANDS Black River	Sarah Darling	300	+6	0.619
44	50	7	A BUNCHA GIRLS Warner Bros./WAR	Frankie Ballard	295	+87	0.595
45	41	13	COUNTRY BOY Stroudavarious	Aaron Lewis Feat. George Jones & Charlie Daniels	294	+3	0.694
46	46	7	SHOTGUN GIRL Warner Bros./WMN	The JaneDear Girls	275	+12	0.473
47	54	2	COUNTRY MUST BE COUNTRY WIDE Valory	Brantley Gilbert	243	+70	0.459
48	51	7	WHEN THE SMOKE CLEARS Black River	Due West	235	+28	0.485
49	45	13	I'D LOVE TO BE YOUR LAST Redneck	Gretchen Wilson	230	-39	0.443
50	58	2	IN GOD'S TIME Show Dog-Universal	Randy Houser	214	+102	0.411
51	55	8	COUNTRY THANG Average Joe's	Colt Ford	186	+20	0.440
52	56	4	NUMBERS For The Lonely/Quarterback	Jason Michael Carroll	183	+51	0.407
53	NEW	1	STAYING'S WORSE THAN LEAVING Republic Nashville	★ Hot Shot Debut ★ Sunny Sweeney	175	+107	0.332
54	53	22	OH, TONIGHT Pretty Damn Tough	Josh Abbott Band Feat. Kacey Musgraves	142	-38	0.227
55	57	7	SOMETHING BETTER Warner Bros./WMN	The Dirt Drifters	136	+6	0.302
56	52	5	SONGS LIKE THIS 19/Arista Nashville	Carrie Underwood	134	-65	0.267
57	NEW	1	PAPER HEART Skyville	Stealing Angels	116	+26	0.235
58	60	4	WANNA TAKE YOU HOME Emblem/Warner Bros./WAR	Gloriana	113	+21	0.208
59	59	2	AMEN Big Machine	Edens Edge	104	+6	0.178
60	NEW	1	LOOKING FOR AMERICA Big Red M	Mark Wills	95	+5	0.170



IN ASSOCIATION WITH 

SAVE THE DATE

JUNE 6-7, 2011 NASHVILLE, TN

SECURE YOUR PLACE TODAY AND SAVE

CountryMusicSummit.com

For more information and group rates, call 212.493.4263
or email conferences@billboard.com

MAY
2
2011

Bullseye CALLOUT AMERICA

TW	LW	TITLE/IMPRINT/LABEL	ARTIST	TOTAL PASSION	POSITIVE	INDEX	NEUTRAL	DISLIKE	STRONGLY DISLIKE
1	1	I WOULDN'T BE A MAN MCA Nashville	Josh Turner	22.4%	66.7%	3.82	26.1%	7.2%	0.0%
2	9	I WON'T LET GO Big Machine	Rascal Flatts	22.8%	64.8%	3.75	23.7%	10.4%	1.1%
3	13	SOMEWHERE ELSE Show Dog-Universal	Toby Keith	16.5%	60.2%	3.65	28.0%	11.3%	0.4%
4	6	FAMILY MAN Bigger Picture	Craig Campbell	19.1%	60.0%	3.66	27.2%	12.8%	0.0%
5	3	MEAN Big Machine	Taylor Swift	19.1%	60.0%	3.63	26.3%	11.5%	2.2%
6	2	THIS Capitol Nashville	Darius Rucker	19.3%	59.6%	3.68	30.2%	9.3%	0.9%
7	8	BLEED RED Arista Nashville	Ronnie Dunn	20.7%	59.3%	3.67	28.3%	12.0%	0.4%
8	4	OLD ALABAMA Arista Nashville	Brad Paisley w Alabama	19.6%	59.1%	3.67	30.2%	9.8%	0.9%
9	14	A LITTLE BIT STRONGER RCA	Sara Evans	18.3%	58.9%	3.61	25.9%	14.1%	1.1%
10	11	TOMORROW RCA	Chris Young	17.8%	58.5%	3.64	30.4%	10.0%	1.1%
11	10	HEART LIKE MINE Columbia	Miranda Lambert	18.5%	58.5%	3.64	29.6%	10.9%	1.1%
12	7	WHAT DO YOU WANT Sea Gayle/Arista Nashville	Jerrold Niemann	25.7%	58.3%	3.72	30.7%	10.2%	0.9%
13	17	COUNTRY GIRL (SHAKE IT FOR ME) Capitol Nashville	Luke Bryan	18.7%	57.8%	3.61	28.3%	12.0%	2.0%
14	12	LIVE A LITTLE BNA	Kenny Chesney	18.7%	57.6%	3.64	30.2%	11.7%	0.4%
15	15	I CAN'T LOVE YOU BACK Mercury	Easton Corbin	17.4%	57.4%	3.62	30.4%	11.5%	0.7%
16	20	JUST FISHIN' Show Dog-Universal	Trace Adkins	12.2%	55.7%	3.57	33.7%	10.0%	0.7%
17	16	DIRT ROAD ANTHEM Broken Bow	Jason Aldean	19.4%	53.4%	3.53	30.4%	12.9%	3.2%
18	19	YOU LIE Republic Nashville	The Band Perry	15.0%	53.0%	3.49	30.4%	13.9%	2.6%
19	24	AM I THE ONLY ONE Capitol Nashville	Dierks Bentley	16.1%	52.8%	3.52	31.7%	13.7%	1.7%
20	21	RAYMOND Atlantic/WAR	Brett Eldredge	13.7%	52.8%	3.48	30.0%	15.9%	1.3%
21	18	HONEY BEE Warner Bros/WMN	Blake Shelton	13.9%	52.8%	3.53	34.6%	11.3%	1.3%
22	22	WITHOUT YOU Capitol Nashville	Keith Urban	13.9%	52.0%	3.49	32.6%	13.7%	1.7%
23	26	LOVE DON'T RUN Curb	Steve Holy	12.4%	51.5%	3.43	30.0%	16.3%	2.2%
24	23	WON'T BE LONELY LONG Columbia	Josh Thompson	12.6%	51.3%	3.49	35.0%	12.6%	1.1%
25	—	KNEE DEEP Southern Ground/Arista/Bigger Picture	Zac Brown Band f Jimmy Buffett	16.8%	51.0%	3.49	33.5%	12.3%	3.2%
26	29	KEEP IN MIND Stroud/Various	LoCash Cowboys	8.9%	50.0%	3.42	34.6%	14.3%	1.1%
27	25	A BUNCHA GIRLS Warner Bros/WAR	Frankie Ballard	7.4%	50.0%	3.42	35.2%	13.9%	0.9%
28	27	IF HEAVEN WASN'T SO FAR AWAY Valory	Justin Moore	13.9%	49.6%	3.47	35.9%	12.8%	1.7%
29	28	BEAUTIFUL EVERY TIME Curb	Lee Brice	8.0%	49.3%	3.38	32.4%	17.4%	0.9%
30	30	LAST NIGHT AGAIN Big Machine	Steel Magnolia	9.1%	48.9%	3.41	35.2%	14.6%	1.3%
31	31	CRAZY GIRL Republic Nashville	Eli Young Band	5.4%	43.3%	3.30	39.8%	15.4%	1.5%
32	33	TEENAGE DAUGHTERS Republic Nashville	Martina McBride	7.6%	42.8%	3.24	34.6%	18.9%	3.7%
33	34	HOMEBOY EMI Nashville	Eric Church	8.3%	42.2%	3.27	37.8%	16.7%	3.3%
34	32	LOOK IT UP MCA Nashville	Ashton Shepherd	8.5%	41.7%	3.28	38.7%	17.0%	2.6%
35	35	BAREFOOT BLUE JEAN NIGHT RCA	Jake Owen	6.1%	39.8%	3.25	42.1%	15.2%	2.9%

The Callout America sample is 450 persons in each weekly report. Sample is 50% Male/Female and taken from 20 U.S. Markets. Demos are evenly balanced in 18-24, 25-34, 35-44 and 45-54 cells. Song scores are on a 1 to 5 differential with "1" meaning strong dislike and "5" meaning like it a lot. The positive index is an average of all 1 to 5 scores. Total Positive is the combined 4 and 5 scores. Market breakouts by geographical region are: MIDWEST: Cincinnati, Indianapolis, Kansas City, Omaha and Wichita. SOUTH: Atlanta, Charleston, Charlotte, Mobile/Pensacola and Nashville. EAST: Philadelphia, Pittsburgh, Providence RI, Rochester, Virginia Beach. WEST: Colorado Springs, Houston, Modesto, Phoenix and Portland OR.

CHART LEGEND

RANKINGS

Hot Country Songs is ranked by total audience impressions for the week ending Sunday based on monitored airplay of 127 stations by Nielsen BDS. Audience totals on the chart are derived, in part, using certain Arbitron Inc. copyrighted Persons 12+ audience estimates (under license © 2011, Arbitron Inc.). Country Indicator is tabulated using reported playlists and Nielsen BDS-monitored airplay at 100 stations, ranked by total plays.

BULLETS

● Awarded on Hot Country Songs to titles gaining audience or remaining flat from the previous week. A song will also receive a bullet if its percentage loss in audience does not exceed the percentage of monitored station downtime for the format.

Titles that decline in audience but increase in detections will also receive a bullet if the total audience erosion for the week does not exceed 3%. Bullets are awarded on Country Indicator to titles gaining plays or remaining flat from the previous week.

TIES

On Hot Country Songs, if two songs are tied in total audience, the song with the larger increase in audience is placed first. On Country Indicator, if two songs are tied in total plays, the song with the larger increase in plays is placed first.

RECURRENTS

On Hot Country Songs, descending titles below No. 10 in either audience or detections are moved to recurrent after 20 weeks, provided that they

are not still gaining enough audience points to bullet or if they rank below No. 10 and post a third consecutive week of audience decline, regardless of total chart weeks. On Country Indicator, descending, non-bulleted titles below No. 10 are moved to recurrent after 20 weeks.

HOT SHOT DEBUT

Awarded to the highest-ranking new entry on Hot Country Songs and Country Indicator, respectively.

MOST ADDED

The total number of new adds officially reported to Billboard by each reporting station, or by an automatic-add threshold (seven plays for the first time in a chart tracking week, according to Nielsen BDS) for stations that do not report adds.

MOST INCREASED AUDIENCE/PLAYS

Most Increased Audience on Hot Country Songs and Most Increased Plays on Country Indicator list the songs with the greatest week-to-week increases in total audience or plays, respectively.

AIRPOWER

Awarded on Hot Country Songs to titles ranking inside top 20 in plays and audience rankings for the first time, with increases in both plays and audience.

BREAKER

Awarded on Hot Country Songs to titles achieving airplay (at least one detection) at 60% of reporting stations for the first time.

MAY
2
2011



RADIOFEEDBACK

TW	LW	TITLE/IMPRINT/LABEL	ARTIST	TOTAL PASSION	POSITIVE	INDEX	NEUTRAL	DISLIKE	STRONGLY DISLIKE
1	1	A LITTLE BIT STRONGER RCA	Sara Evans	46.4%	74.1%	4.10	15.9%	5.7%	4.3%
2	2	WITHOUT YOU Capitol Nashville	Keith Urban	45.6%	73.3%	4.10	18.3%	4.5%	3.9%
3	3	TOMORROW RCA	Chris Young	43.5%	72.2%	4.00	17.8%	6.6%	3.4%
4	5	BLEED RED Arista Nashville	Ronnie Dunn	43.4%	70.2%	4.00	19.5%	5.4%	4.9%
5	4	HEART LIKE MINE Columbia	Miranda Lambert	43.6%	69.6%	3.90	17.0%	7.6%	5.8%
6	7	IF HEAVEN WASN'T SO FAR AWAY Valory	Justin Moore	36.6%	69.5%	3.90	20.9%	4.9%	4.6%
7	6	I CAN'T LOVE YOU BACK Mercury	Easton Corbin	36.7%	68.5%	3.90	21.6%	6.6%	3.3%
8	9	I WON'T LET GO Big Machine	Rascal Flatts	40.7%	68.0%	3.90	18.6%	7.0%	6.4%
9	10	I WOULDN'T BE A MAN MCA Nashville	Josh Turner	40.0%	67.8%	3.90	21.1%	7.1%	4.1%
10	8	RAYMOND Atlantic/WAR	Brett Eldredge	41.4%	67.4%	3.90	19.1%	8.3%	5.3%
11	12	THIS Capitol Nashville	Darius Rucker	34.8%	67.0%	3.80	19.9%	6.7%	6.4%
12	11	FAMILY MAN Bigger Picture	Craig Campbell	36.4%	66.5%	3.90	21.8%	8.2%	3.6%
13	13	WHAT DO YOU WANT Sea Gayle/Arista Nashville	Jerrod Niemann	40.9%	65.4%	3.80	18.3%	9.9%	6.3%
14	15	KEEP IN MIND Stroudavarious	LoCash Cowboys	32.0%	64.4%	3.80	25.0%	6.8%	3.7%
15	14	OLD ALABAMA Arista Nashville	Brad Paisley f Alabama	35.2%	63.9%	3.80	23.7%	6.7%	5.7%
16	16	HONEY BEE Warner Bros./WMN	Blake Shelton	38.4%	62.4%	3.90	24.8%	10.1%	2.7%
17	17	LIVE A LITTLE BNA	Kenny Chesney	28.9%	61.1%	3.60	20.3%	9.1%	9.5%
18	19	LOVE DON'T RUN Curb	Steve Holy	26.7%	59.9%	3.70	27.3%	7.4%	5.3%
19	18	LOOK IT UP MCA Nashville	Ashton Shepherd	34.2%	59.4%	3.60	17.3%	12.2%	11.2%
20	20	YOU LIE Republic Nashville	The Band Perry	30.2%	57.7%	3.60	22.1%	10.8%	9.3%
21	22	SOMEWHERE ELSE Show Dog-Universal	Toby Keith	25.6%	56.3%	3.50	24.3%	11.6%	7.7%
22	21	WON'T BE LONELY LONG Columbia	Josh Thompson	22.6%	55.2%	3.60	28.4%	10.6%	5.7%
23	23	CRAZY GIRL Republic Nashville	Eli Young Band	20.5%	55.1%	3.60	29.2%	11.1%	4.6%
24	25	LAST NIGHT AGAIN Big Machine	Steel Magnolia	23.9%	53.9%	3.50	27.5%	12.5%	6.1%
25	24	JUST FISHIN' Show Dog-Universal	Trace Adkins	19.4%	53.0%	3.50	31.5%	10.8%	4.7%
26	27	GOOD TO BE ME Top Dog/Atlantic/Bigger Picture	Uncle Kracker w Kid Rock	24.8%	51.0%	3.40	26.6%	12.0%	10.4%
27	28	MEAN Big Machine	Taylor Swift	24.1%	49.7%	3.20	19.6%	11.5%	19.2%
28	29	BEAUTIFUL EVERY TIME Curb	Lee Brice	19.6%	48.4%	3.40	34.0%	12.1%	5.5%
29	26	AM I THE ONLY ONE Capitol Nashville	Dierks Bentley	28.8%	46.8%	3.30	21.3%	21.3%	10.5%
30	30	TEENAGE DAUGHTERS Republic Nashville	Martina McBride	20.8%	45.5%	3.40	32.9%	15.0%	6.6%
31	31	COUNTRY GIRL (SHAKE IT FOR ME) Capitol Nashville	Luke Bryan	23.2%	43.3%	3.20	23.6%	19.0%	14.1%
32	33	A BUNCHA GIRLS Warner Bros./WAR	Frankie Ballard	13.9%	41.0%	3.20	32.0%	15.6%	11.3%
33	32	HOMEBOY EMI Nashville	Eric Church	18.6%	40.3%	3.20	33.1%	17.1%	9.5%
34	34	DIRT ROAD ANTHEM Broken Bow	Jason Aldean	20.1%	38.6%	2.90	15.9%	20.5%	25.0%
35	35	BAREFOOT BLUE JEAN NIGHT RCA	Jake Owen	14.0%	36.2%	3.00	28.3%	21.9%	13.6%

RADIOFEEDBACK THIS WEEK

ELI YOUNG BAND MAKES 'CRAZY' RADIOFEEDBACK MARK

"Crazy Girl" is getting traction for the **Eli Young Band** online at No. 23, up from No. 29 two weeks ago. Younger adults 18-34 are at No. 17, up from No. 25 during the last two weeks. Females 12-plus are at No. 21, as are females in the 18-34 demo. Male strength online is with 18-34s, at No. 9 overall and No. 23 passion. Core males 25-44 rank "Crazy" at No. 18 for the week.



ELI YOUNG BAND

Sara Evans has the dominant song online as "A Little Bit Stronger" ranks at No. 1 positive and passion. Core 25-44s are at No. 1 positive and passion. Core females are also at No. 1 positive and passion, and females 12-plus are almost identical, placing it at No. 1 and No. 2 passion. Men 12-plus rank the song at No. 1 posi-

tive and passion. A solid power.

Ronnie Dunn moves inside the top five with "Bleed Red" at No. 4, up from No. 5. Dunn also claims No. 5 passion standing. Adults 25-54 are at No. 3 and No. 4 passion. Females 12-plus are at No. 4 and No. 5 passion, and core 25-44 females are at No. 7. Core males rank the song No. 3 and No. 6 passion, and males overall 12-plus are at No. 4 and No. 2 passion.

Ashton Shepherd stays strong with "Look It Up" coming in at No. 19 and No. 16 passion. Younger listeners 18-34 are at No. 18 and No. 19 passion. Men 12-plus rank the title at No. 15 and No. 12 passion. Male strength is with adults 35-plus at No. 13 and No. 6 passion. Females 12-plus score it at No. 19 and No. 16 passion. Core 25-44 females are at No. 17 positive and passion.

—John Hart, Bullseye Marketing Research
email: hart@bullsi.com

Radiofeedback is solicited weekly via email to Country Radio listeners and fans in Radio Station Loyal Listener data bases and from Social Media Data Bases. Listeners score 40 songs online via a link to the Radiofeedback study. Song clips are :20 seconds in length and are scored on a 1 to 5 differential with "1" meaning "I Don't Like This Song At All" and "5" meaning "I Like this Song A Lot" they also answer a follow up question asking if they hear the song "Too Much", "Not Enough" or "Just About Right" on the radio. Radiofeedback's Top 30 contributing markets are: Atlanta, Austin, Birmingham, Boston, Buffalo, Charlotte, Chicago, Dallas, Denver, Houston, Indianapolis, Jacksonville FL, Knoxville, Las Vegas, Los Angeles, Minneapolis, Nashville, New York City, Omaha, Orlando, Oklahoma City, Philadelphia, Phoenix, Pittsburgh, Portland, San Antonio, San Diego, Seattle, St. Louis and Washington DC. For more information, contact John Hart (hart@bullsi.com).

