

Bruce Highway upgrade at Isis River Bridge

October 2010

A project to replace the 54-year-old Isis River Bridge on the Bruce Highway south of Childers is on target to start this month.

The Bruce Highway plays a significant role in providing freight movement and access to north Queensland. About 7200 vehicles travel on this section of the road each day.

The new bridge has been a state and federal government priority in recent years. However a number of incidents at or near the bridge last year renewed calls from the community, local media and local government to replace the bridge.

To ensure timely construction of a new bridge, the Department of Transport and Main Roads accelerated the project and started the behind-the-scenes work.

Suitably pre-qualified contractors were invited to submit an expression-of-interest application to tender for the project earlier in the year.

In the past six months workers have finalised surveying work, environmental studies, cultural heritage studies, geotechnical works, land resumptions and service relocations.

The design is now complete and is shown overleaf. The new bridge will be higher and wider, with new approaches to improve the alignment. A strengthened road surface will minimise road surface failures and provide a smoother driving surface for motorists.

Local property owners have been contacted about improvements to their accesses. New signage, guardrail and lighting are also included in the project.

During construction, motorists will continue to use the current Isis River Bridge. Construction is expected to be completed by September 2011, weather permitting.

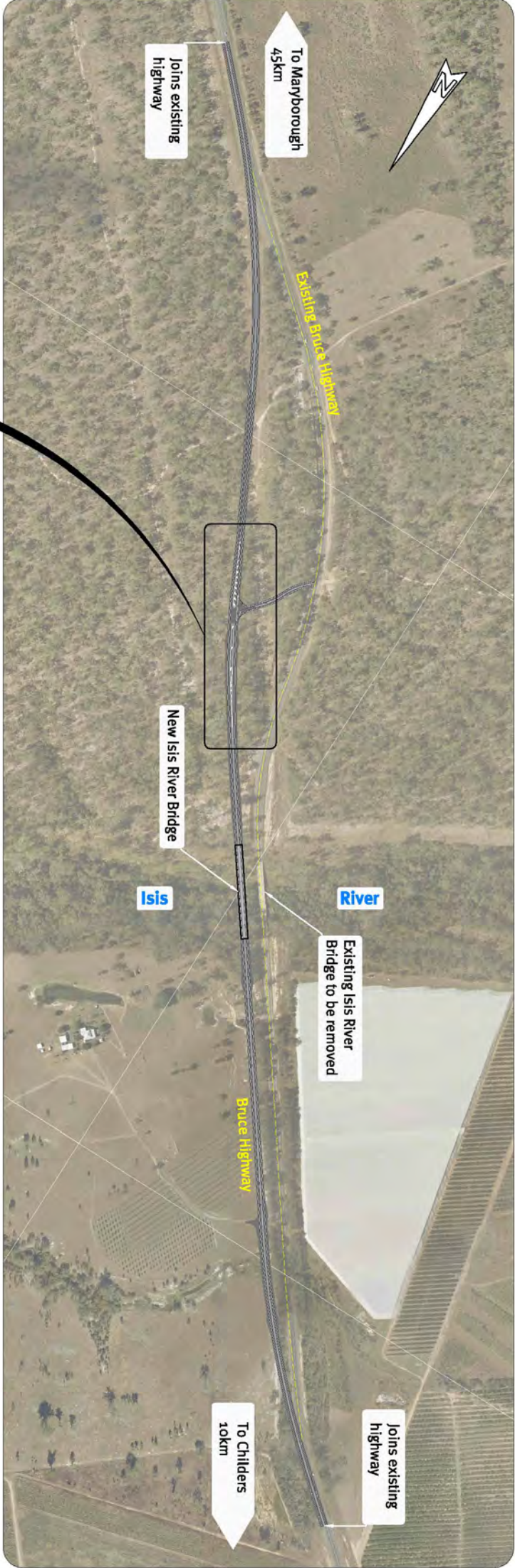


Benefits of the upgrade

- Improved safety for all road users
- Higher and wider bridge
- Improved road alignment
- New and smoother road surface
- Improved property accesses
- New guardrail
- Better signage
- Removal of roadside obstacles

Who to contact:

Name : Communication Team
Phone: 1300 728 390
Fax: 4152 3878
Email: bundaberg.office@tmr.qld.gov.au



**Bruce Highway (Maryborough to Childers)
New Isis River Bridge
10km south of Childers**