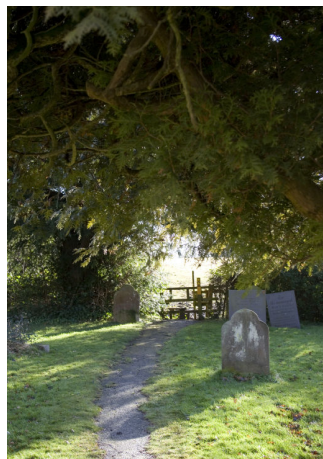


Village Guide 2009-10

produced by Village Voice



Welcome

We hope that you enjoy using this Village Guide for Bottesford, Easthorpe, Normanton and Muston. The Village Voice group has worked hard to produce this Guide and we hope that you will find it useful. Why not join one of the groups mentioned? If your Group is not listed then please get in touch so that we can include you in the next issue.

Information has been provided to us by members of the Groups listed. The Village Voice group accepts no responsibility for any inaccuracies/consequences which may arise from them.

Dilys Shepherd, Village Voice. Tel: 843505, email: vv@bottesford.org.uk.

Useful Numbers

Health

Belvoir Vale Surgery, Walford Close.....842341
The Welby Surgery 842325
Grantham Hospital 01476 565232
QMC.....01159 249924
Royal, Leics & Glenfield Hospitals 0300 3031573
NHS Direct:.....0845 4647
Sexwise (for Under 19's)0800 282930
Vets: Grantham.....01476 563371
 Bottesford 843277
Pharmacy.....843786

Emergency Services 999
Vale First Responder.....999
Belvoir First Aid (non-emergency)860167
Leics Police (non emergency).....0116 222222
Bottesford Police.... 842311
Severn Trent water/sewerage.....07834444
Gas-Transco.....0800 111999
East Midlands Electricity0800 0568090
BT: Fault reporting 0800 800151

Environment agency:

Enquiries08708 506506
Emergencies 0800 807060
Floodline.....0845 9881188

Council Information

Melton Borough Council01664 502502
Leicestershire County Council0116 2323232
Consumer Advice/Complaints.....08454 040 506
Business Advice/Complaints.....0116 3058000
Customer Service Centre.....01522 782010
Registrar (births/marriages/deaths)
Melton.....0116 3058781
Grantham Library01522 782010
Bottesford Library.....0116 3053 550

Travel/Bus companies

Paul James01530 832399
West End Travel.....01664 561116
National Rail Enquiries08457 484950
Travel Line (Nottm Bus services) 08712 002233

Councillors

District Councillors: David Wright..... 842610
 Pru Chandler.....842355
County Councillor, Byron Rhodes.....860029
Parish Council Clerk... bottlesfordpc@tiscali.co.uk
Mrs B Taylor Mon-Fri, 9am-4pm.....843611

Leisure/Tourism

Melton Leisure Centre/Theatre.....01664 851111
Melton Waterfield Leisure/Pool.....01664 63550
Meres Leisure Centre, Grantham...01476 581930
Bingham Leisure Centre.....838628
Grantham Tourist Info01476 406166
Melton Museum.....01664 569946
Grantham Museum.....01476 568783

Agencies/Charities/Misc.

Child Line Nottm0870 3362955
NSPCC0808 8005000
Parent Line Plus.....0808 8002222
Samaritans ... (National, 24 hrs) 0845 7909090
Samaritans (Grantham).....01476 591551
Talk to Frank about drugs.....0800 776600
Probation Service01664 410410
Relate0116 2543011
Post Office Sorting Office (Bingham)842034
Victim Support.....0845 303 0900
Cruse Bereavement Care.....0870 167 1677
Citizens Advice Bureau Lincs0844 4994199

Voluntary Action Melton.....01664 483043
Transport Scheme.....01664 482903
Care Scheme.....01664 481777
Carers Development.....01664 485304
Healthlink Workers.....01664 485302
Pyramid Project.....01664 485303
Volunteer Development Officer...01664 485 300

Schools

Bottesford Primary842224
Belvoir High School844920

Contents

- P2 Useful Numbers
- P3 Library/Community Centre/Churches
- P4 Groups/Societies
- P5 Groups Societies
- P6 Sport/Meeting venues
- P7 Schools/Youth groups

Bottesford Library

Leicestershire Library Service, The Old School, Grantham Road, tel: 0116 3053 550

As well as a good variety of books in normal and extra large print you can do photocopying and faxing. You can also book lessons on the Internet, e-mail, spreadsheets, etc. To search the library catalogue, or join the library and reserve books on line go to: www.leics.gov.uk/index/community/libraries.htm

Opening Hours:

Monday 2 – 5 pm

Tuesday 5 – 7.30 pm

Wednesday Closed

Thursday 2 – 5 pm

Friday 9 – 12 noon and 5 – 7.30 pm

Saturday 9.30 – 1 pm and 2 – 5 pm

Bottesford Community Centre - Belvoir High School, Barkestone Lane.

The Community Centre offers a wide range of part-time activities for adults and children of all ages in the day and evening. Daytime classes are within school times and terms and there is a daytime crèche available for 0 – 8 year olds.

Opportunities available include taster sessions, short and longer courses - from subjects purely for fun through to computer qualifications and GCSEs. The average cost of a community course is between £2.20 and £3.30 per hour. Reductions are available for people in receipt of certain benefits. Call the Community Centre for more information, a brochure or to book a place on a course. Tel: 844199 or e-mail: jhmadgewick@leics.gov.uk



The Bede House,
Bottesford

Churches

The Methodist Chapel, Devon Lane, Bottesford

As well as regular services activities include a Women's Fellowship and a Bible Study Group. A fortnightly "Lite-Bite" takes place on 1st, 3rd and 5th Wednesdays from 12noon. Tel: Rev Lesley Taylor on 842952 or Angela Baldwin on 842579

St Mary the Virgin, Bottesford

Our services are as follows:

1st Sunday – Come and Praise 10.30 a.m.

Choral evensong 6.00 p.m. (4.00 p.m. during winter months)

2nd Sunday- Parish Eucharist 10.30 a.m.

3rd Sunday – Parish Eucharist 10.30 a.m.

4th Sunday – Informal Eucharist 10.30 a.m.

4th Sunday of the month – Sunday School, meeting in Church @ 10.20am then moving to the Fuller Room.

Benefice Office Tel. 842859

e-mail stmarysbottesford@tiscali.co.uk

St John the Baptist, C of E, Muston.

1st Sunday—Holy Communion 8.30am

2nd Sunday—Evensong 6.00pm (4pm in winter months)

3rd Sunday—Holy Communion 8.30am

4th Sunday—Evensong 6.00pm (4pm during winter months)

Bottesford Baptist Church, Queens Street, Bottesford

Meets every Sunday at 10.30am for Morning Worship and BBC Kids (Sunday School). Communion is celebrated on the 3rd Sunday of each month.

Various other activities take place throughout the week including Housegroup, BBC Toddlers (Wednesday and Thursday) Pop Ins (for coffee and a chat on a Friday) and Dads Allowed (on the 3rd Saturday of each month)

For further information contact Helen Dixon on 843704 or e-mail r.johnd@tiscali.co.uk

St Mary's Catholic Church, North Parade, Grantham NG31 8AT

Services Saturday evening – 6.00pm, Sunday morning – 8.00am and 10.00am and Weekdays as announced.

Tel: Canon Anthony Dolan on 01476 563935

Clubs/Groups

American Square Dancing

At Allington Village Hall, Tuesday 8pm.
Beginners welcome, contact G Pedge on 842619

BBC Toddlers, Baptist Church, Queen Street

The group is open to all in order to provide a safe friendly environment for the adults and children to meet, chat and play. Mums and carers can enjoy a cup of coffee. We have a range of toys and activities for those from birth to 4+. The group meets on Wednesdays and Thursdays from 9.30 a.m. to 11.30 a.m. at the Baptist Church. Tel: Margaret Isdale, 843687 or Helen Dixon. 843704.

Bell ringers - St Mary's Church, Bottesford

The group meets to ring the bells for the church services, for national and local events and to promote the art of Change Ringing.

Practice night - Wednesdays 7.45 to 9.00 pm

Service ringing - Sundays 10.00 to 10.30 am

Tel: David Jones on 843634 or e-mail

jones.family2@tiscali.co.uk "

Belvoir Locals Oppose Turbines (BLOT)

A local group opposed to industrial wind turbines being sited too close to communities, because of their negative impact on quality of life, environment and health. It is not opposed to the development of renewable energy sources where adequate independent research has been carried out and proper precautions taken. More info on www.blot-online.org and info@blot-online.org

Bottesford Amateur Theatrical Society (B.A.T.S.)

This is a small friendly group who aim to stage one or two productions each year. There are no auditions required. Everyone is welcome either to act or to help back stage. Contact Julia Burton on 850340 or email julia@swells.co.uk

Bottesford & District Gardens Association

The Group runs a shop on Grantham Road, opposite the Easthorpe Road junction, open Sundays from 10.00am to 11.30am and Wednesday evenings from 6.30pm to 7pm, except for the months of December & January.

Seeds, compost and other garden sundries are available with all profits going towards funding the Annual Show. If you would like to join the Association call into the shop where one of our helpful committee members will be pleased to assist you, or contact Vic Martin on 842683

Bottesford Environmental/Conservation Volunteers - B.E.C.V.

An informal grouping of residents prepared to be involved in occasional voluntary projects of an environmental or conservational nature. BECV also manages the continuing Bottesford Living History Project in conjunction with the Bottesford Local History Society. Contact Barbara Pizzey (01949 844026) or Neil Fortey (01949 843320)."

Bottesford Parish Neighbourhood Watch

Help the police fight crime and anti-social behaviour: get involved with the NHW wherever you live in the Parish. The network of Area Coordinators and Street Contacts helps to provide a two-way flow of information and assistance and is supplemented by a rapid e-mail alert facility. The remit of the NHW now includes **Flood Warden** activities. For more information contact the Principal Coordinator, Brian Kelk, on 842241 or by e-mail: brian.kelk@onetel.net

Bottesford Pre-School

Daily 9am-4pm for children 2yrs 9mths to 5 years. Now takes Govt. funding. Purpose built premises with extensive outdoor play area. Located in grounds of Belvoir High School. Contact Kim Doleman or Lucinda Tongue on 844489.

Bottesford Reading Groups

The groups meet monthly at either members' homes or in the pub. Members read a book a month and discuss informally and go on book related outings. The groups are supported by the Leicestershire Library service.

For Bottesford Bookworms contact: Ros Willis on 842641 or r_willis@madasafish.com

For Readers United contact: Jane Spencer on 844234

East Midlands Orchid Society

Meets third Sunday each month at 2.30pm in the Village Hall, non-members welcome. Contact Mike Armstrong 842668.

Friends of Bottesford Primary School

A gathering of parents, friends and staff working together to raise funds for the school & for outings. Contact Joanne Skerritt 843923.

Friends Of Chernobyl's Children

The group is trying to improve the lives of children who live near Chernobyl and who come here for a month each summer for three years. If you would like to help raise funds, or assist in any way, contact Anne Ablewhite on 842259

or anneablewhite@hotmail.com

Local History Society

The group endeavours to promote awareness of local heritage within Bottesford and surrounding areas. Local knowledge is shared and debated by members. Guest speakers with specialist knowledge are also invited. They meet on the 2nd Thursday of each month - Sept to June - in the Fuller Rooms at 7.30pm. Tel: Peggy Topps on 842228 or ptopps@talktalk.net

Mothers Union

The purpose of the Mothers Union is to be specially concerned with all that strengthens and preserves Marriage and Christian family life. Membership is open to all, men also welcome. Meets on the first Wednesday of the month in the Parish Room or in the Church in warm weather. Tel: Eileen Boyce on 843317

Patchwork

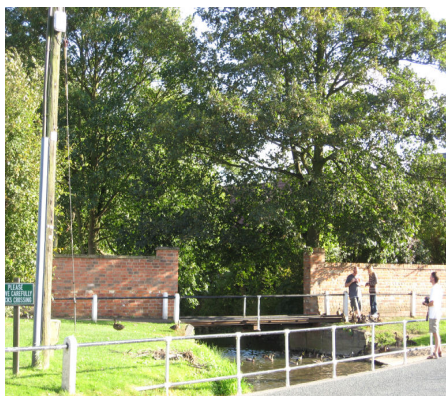
Patchwork, quilting, various embroidery techniques and crochet. Meet Wednesdays, 1.15—3.15pm at the Community Centre. Tel: Kathleen Panter on 842544 or contact the Community Centre on 844199.

University of the Third Age (U3A), Vale of Belvoir

U3A provides educational, recreational and leisure activities for people who "enjoy being retired but not retiring". Main meeting is second Tuesday at 2.00 pm each month (except August) in the Village Hall. For details telephone either Dorothy Baines on 05601769249 or Miranda Martin on 843519

Vale of Belvoir Art Society

The group is open to members of all ages and abilities who work with paint & other media. Demonstrations are given about once a month. The Group meets Tuesday 7.30 pm at Methodist Chapel Hall, Devon Lane. Tel: Glenda Gibson 845106.



The footbridge by St Mary's Church, Bottesford

Vale of Belvoir Lions Club

The club, formed in 1979, has raised thousands of pounds, organising events such as the annual firework display, Boxing Day Duck race and Santa's Christmas collections throughout the Vale. Members are people who share a common interest in raising funds for worthwhile causes, having fun and at the same time helping those less fortunate than most. They meet at 8 p.m. on the 2nd and 4th Wednesday of each month at the Vale of Belvoir Inn on the A52 at Whatton. Tel: Lion Phil Salathiel on 843034 or visit their website at www.voblions.org.uk

Vale of Belvoir Ramblers

The Group meets every week for long or short walks both locally and further afield. For programme of local walks see www.ramblers.org.uk or call Jan Tilsley on 0115 9825600.

Vale of Belvoir Probus Club

For retired/semi-retired professional, businessmen or the like - meets at the Vale of Belvoir Inn and Hotel on the 2nd and 4th Wednesdays every month. More information from Membership Secretary David French on 875466.

Vale of Belvoir Theatre Group

Organises trips to local theatres to see a variety of shows. Meets twice a year to plan the programme. Tel: Susan Meech on 843402 or email s_meech@yahoo.co.uk.

Village Voice

The group publishes the bi-monthly newsletter that is distributed free to the four villages in the parish of Bottesford. We meet monthly and are always interested in new helpers. Tel: Susan Meech on 843402 or Dilys Shepherd on 843505 or email: vv@bottesford.org.uk

Warwick Flats

Coffee Morning every Tuesday 10.30 — 12.00 and hold other ad hoc events. All Senior Citizens welcome. Tel: Trish or Alison for more information on 842334.

Womens Institute (W.I.) Meets third Tuesday in the month with speakers, outings and theatre trips. They have a darts team and new members are welcome.

Tel: Angela Kappellar on 842043.

Wriggly Readers

Meets at Bottesford Library on the first Friday of the month, between 10.00-10.30am. An informal rhyme and story session for babies and toddlers along with their parents/carers. For more information contact the Library 0116 305 3550

Sport

Football

Bottesford Football Club runs several senior and junior sides catering for all ages from 5 to 50+. Plays regularly throughout the season & meets 1st Sunday in month at Bull Inn

Chairman: Chris Hart on 843391

Senior section: First Team, Reserves, Under 16s, Veterans (35+). Contact: Danny Gribby 843858

Junior section: Under 8s, Under 9s, Under 10s, Under 11s, Under 12s, Under 14s and Under 15s at Belvoir High School. Also an open session on Saturday mornings 9.45 - 11am for boys and girls aged 5 to 12. Contact: Chris Hart on 843391

Long Bennington Football Club

For under 7s up to adults.

Contact Stacy Marriott on 01400 281414.

Karate Club (Cougar Martial Arts)

Karate, self defence, fitness – all age groups. Families welcome

Meet Fridays from 7.00 to 8.30 pm. at the VC Hall Tel: Graeme Walden on 01476 577169 (Mob. 07843 097042).

Bowling Club, Belvoir Road.

The Club organises bowling at home and away during the summer season and indoors on Thursdays during the winter at Belvoir High School. It also has a Whist Drive every Wednesday during the winter at the club house. Tel: Bernard Hawes on 843206.

Netball - at Belvoir High School.

Children and ladies welcome. Contact Sally Johnson on 01400 281993.

Bottesford Anglers Club

The club holds weekly matches, juniors welcome, and meets on the first Wednesday of each month in the Red Lion at 8pm. Tel: Brian Cross on 843164.

Pub teams

The pubs have a number of darts, dominoes, pool, skittles and football teams.

The Bull, tel: Mark and Sarah on 842288

The Red Lion, tel: Barry on 842218

The Rutland, tel: Roger on 843031

Shape Aerobics

Contact Rose Thorpe 07763 848449

Belvoir Badminton Club

League matches played and social events. New members welcome. Wednesdays 7.30-10pm.

Tel: Sally Gilbert on 01476 575 056

Bottesford Badminton Club.

Fridays 7-10pm September to April.

Tel: Linda Hallam 01664 854790

or Bruce Baxter 843859

Bottesford Junior Badminton Club.

Open to all abilities .

Mon: 8-12 yrs 7.30-8.30 &

13-16 yrs 8.30-10pm

Fri: 8-12 yrs (2nd group) 6-7pm

Tel: Mike Bennett 843041,

mikebennet33@talktalk.net

Cricket Club - Bottesford Cricket and Social Club, Belvoir Road

Cricket: Saturdays -1st and 2nd Teams;

Sundays - 1st and 2nd Teams; Thursday -

Belvoir League and various Junior Sides,

starting from Kwik Cricket upwards.

Social: Winter months, Men's darts – Fridays.

Dominoes - Mondays & Wednesdays.

Tel: Lynne Bradshaw 843337or 842084 or

Meeting Venues

Village Hall, Belvoir Road:

The Victory Commemoration Village Hall provides village hall facilities to the community. A main hall is approx. 13.5 by 14.4 metres, has a stage and accommodates up to 150. A separate meeting room takes up to 25. Both available for hire, with separate kitchen facilities. The meeting room can double as a bar. For rates, availability and information see the Village Hall noticeboard or contact Mim Forsey on 0777 5753866.

Methodist School Room, Devon Lane:

Available for day and evening hire (not Sundays). Contact Angela Baldwin on 842579

Belvoir High School:

See Page 7 for further details.

Fuller Rooms, Grantham Road

Room for up to 50 people, available at £7 per hour Contact Mrs B Taylor on 843611 or e-mail bottesfordpc@tiscali.co.uk

Bottesford Cricket and Social Club:

Available for hire for meetings/children's parties. See above for contact details.

Youth Clubs & Groups

Bottesford Youth Club, Old School, Grantham Road

The Youth Club is open on week nights for young people aged 12–19. For information contact Adam McGlone (Youth Development Worker) on 844531 or belvoiryouth@btconnect.com

SCOUTS

Cub Scouts (8 – 10½), Scouts (10 – 14)
Explorer Scouts (Age 14 – 18)
Tel: Viv Money for days and times of meeting on 842713

Belvoir High School

As a Foundation School, Belvoir High is happy to share and encourage further use of their facilities with the larger community in as many ways as possible, offering competitive rates for junior & adult clubs, meetings & private functions. A variety of local clubs currently use the amenities including football, badminton, netball and bowls clubs and exercise classes. They have hosted pantomimes, presentation evenings and community meetings.

The school is undergoing an ambitious redevelopment programme and additional facilities for conferencing and other functions may be available for community use in the future.

Sports facilities comprise: Large sports hall, two refurbished changing rooms, large outdoor sports area suitable for football in the winter and spring & athletics in the summer and tennis courts.

Facilities for private functions include:

- Large main hall with stage & lighting
- Small hall
- Drama/Dance Studio
- Library

For further information contact the Lettings Officer, Belvoir High School, Barkestone Lane, Bottesford.

Tel: 844920

Fax: 01949 844939 and

admin@belvoirhigh.leics.sch.uk

Girl Guides

1st Bottesford Rainbow Guides. Girls aged 5 – 7, meeting on Monday 5 - 6 pm

2nd Bottesford Rainbow Guides. Girls aged 5 – 7, meeting on Friday, 5 – 6 pm.

1st Bottesford Brownie Pack. Girls aged 7 – 10, meeting on Thursday, 5 – 6.30 p.m.

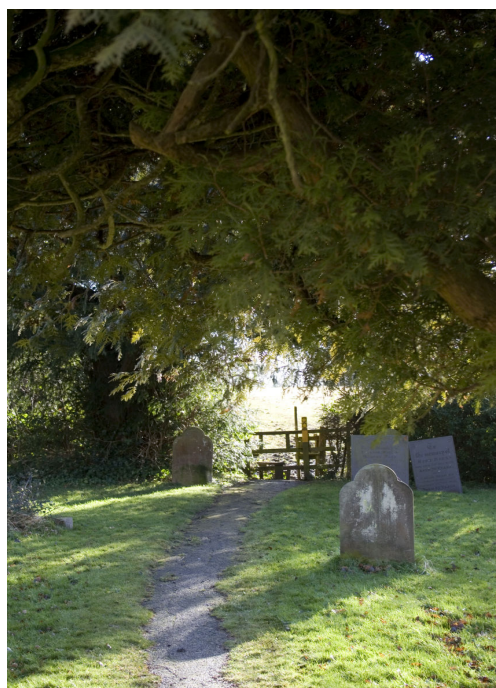
2nd Bottesford Brownie Pack. Girls aged 7 – 10, meeting on Wednesday, 4.15 to 5.30 pm.

1st Bottesford Guides: Girls aged 10 – 14, meeting on Tuesday 7-9pm (9.30pm in summer)

2nd Bottesford Guides: Girls 10 – 14, meeting on Wednesday 7 – 9 pm.

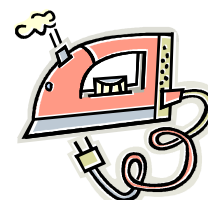
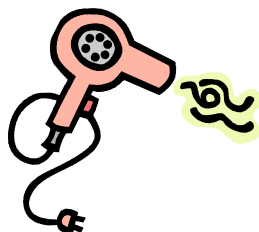
For further details on Girlguiding UK contact Adelle Glossop on 01476 870548.

Churchyard at St John's, Muston



Photographs by www.sands-photography.com

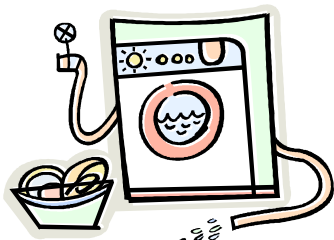
**Do You Need Something
Electrical?
Then You Need**



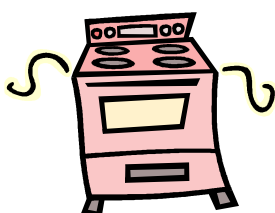
L R Mees Ltd

Established 1965

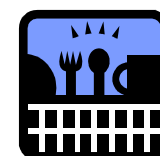
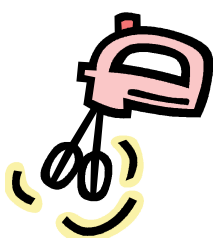
**We can supply most
electrical appliances
TVs, videos, DVDs, Hi-Fis
Washers, Cookers,
Dishwashers, Fridges,
Fridge/Freezers
and many more**



**Our Prices are Competitive
Delivery and Installation
free for major appliances**



**We repair most
electrical equipment and carry
out work that includes
burglar alarms, re-wiring
security lighting, inspections
testing, etc**



retra
The sign of a fair deal



National Inspection Council for
Electrical Installation Contracting



**5 Market Street
Bingham
Notts
01949 838597**

**The Shopping Centre
(inc. the Service Dept)
Cotgrave
Notts
0115 9892312**

Web site: www.lrmees.co.uk Email: sales@lrmees.co.uk