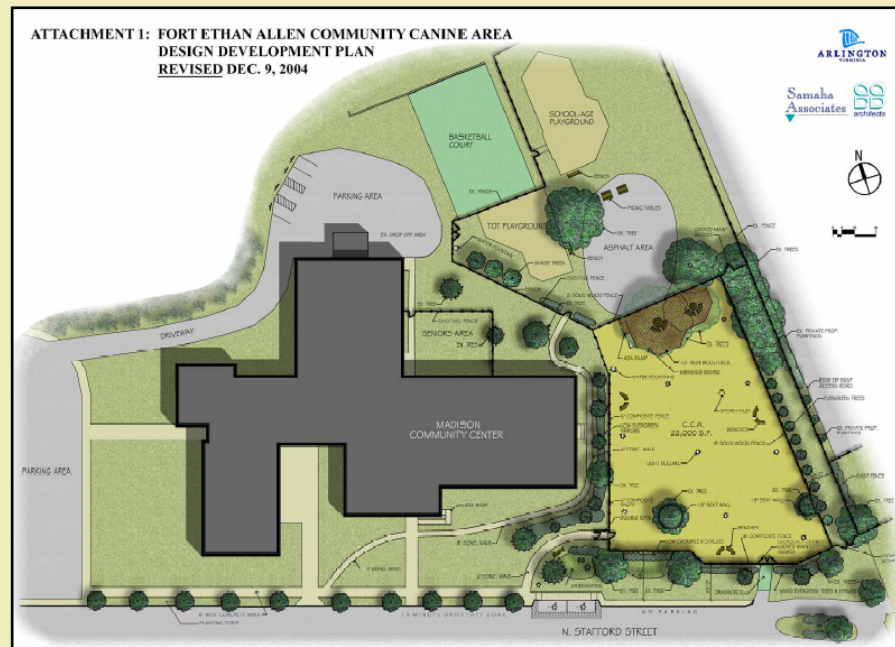




Fort Ethan Allen Community Canine Area

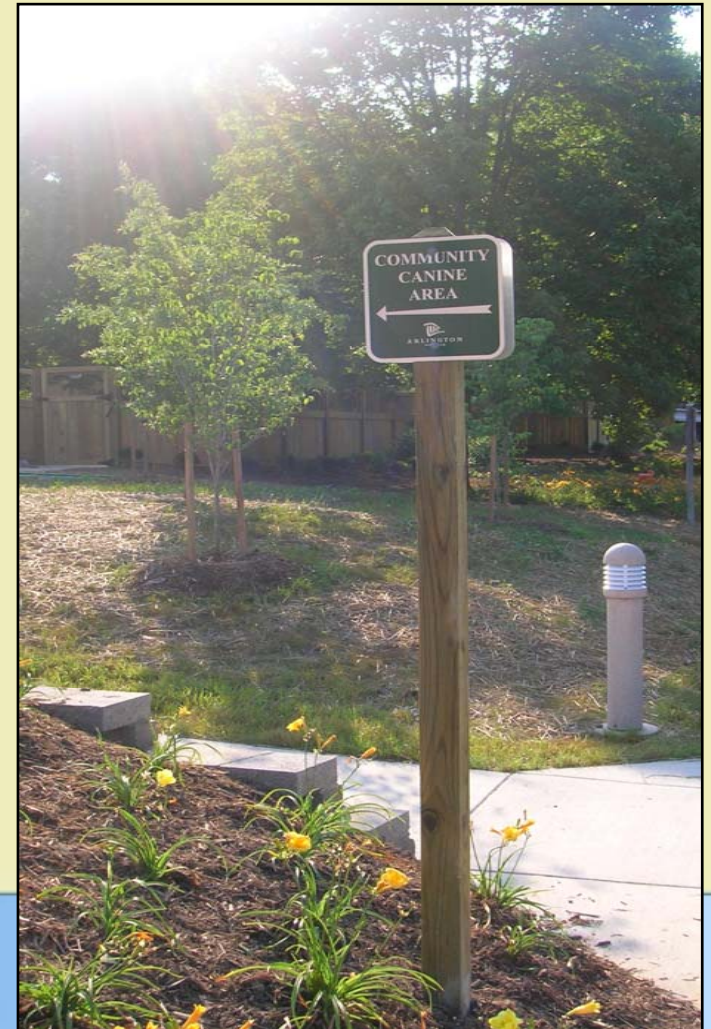
ATTACHMENT 1: FORT ETHAN ALLEN COMMUNITY CANINE AREA
DESIGN DEVELOPMENT PLAN
REVISED DEC. 9, 2004





Fort Ethan Allen Community Canine Area (CCA)

- Region's most innovative community canine area
- 3829 North Stafford Street

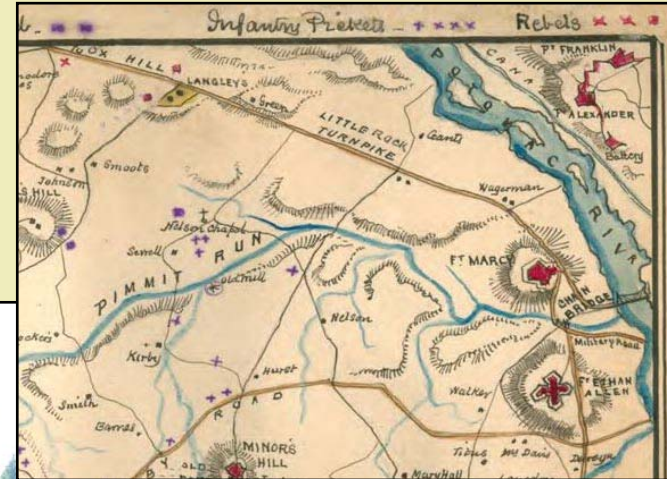




Fort Ethan Allen CCA

Preserving history

- Historic Preservation site
- Fort Ethan Allen CCA moved to improve access to, and interpretation of, Fort Ethan Allen earthworks



Area to be restored.

JUN 6 2015





Fort Ethan Allen CCA

Preserving history

- Archaeological Discoveries:
 - Historic artifacts, some from Civil War era, uncovered during construction
 - Artifacts potentially impacted by construction were recovered for future interpretive use





Fort Ethan Allen CCA

Design protects water quality, trees, neighbors

- Buffer zones from neighbors
- Storm water filtration system protects water quality
- Path system resolves potential conflicts



- Deck protects trees and provides gathering space
- Decorative fencing and landscape





Fort Ethan Allen CCA

A community asset

- Community information kiosk
- Drinking fountains for people and dogs
- Double gates for taking dogs off leash
- Fully accessible to persons with disabilities



06.08



Fort Ethan Allen CCA

Streetscape and accessibility improvements

Ribbon
Cutting
Ceremony:

Saturday,
June 17

10:00 a.m.

- Streetscape improvements along N. Stafford Street
- Access improvements for persons with disabilities
 - Ramp to Madison Community Center



- Drinking fountain, benches and picnic tables in playground area

