

BETTENDORF
COMMUNITY
SCHOOL
DISTRICT

Student Achievement & Reports

2010 DISTRICT REPORT CARD



Passion
Purpose
Pride!

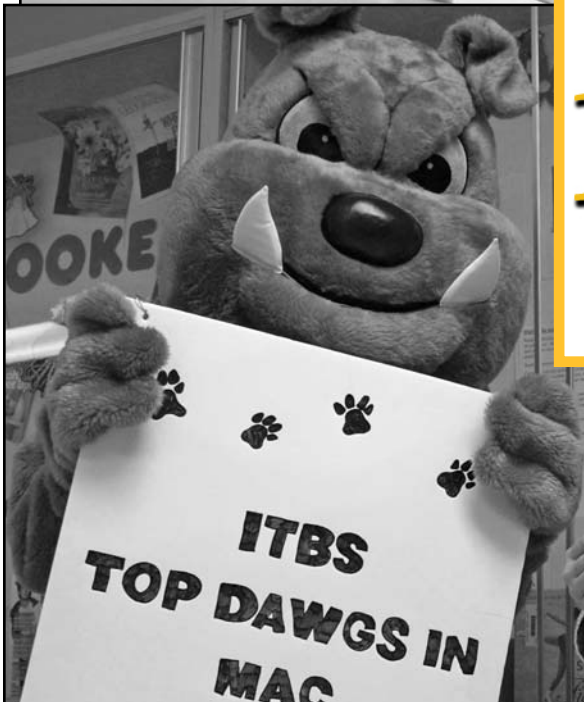


TABLE OF CONTENTS

District Goals

Reading, Math, Science4-5

District Information

Administration12
Board of Education12
Staff Information3
Student Information3
Average Daily Attendance, Class Size,
Enrollment, Ethnicity, Free & Reduced,
Gender

Financial Information

Financial Profile12
General Fund Revenue12
General Fund Expenditures12

High School Information

ACT Assessment Results10
Advanced Placement (AP) Testing10
Athletic Eligibility10
Core Program Completion10
Dropout Information11
Graduation Rate11
Post-Secondary Intentions10
SAT Results10

Student Achievement

National Assessment of Educational
Progress (NAEP)7
State & Regional Comparison6

Additional Assessments:

Developmental Reading Assessment
(DRA)8
Group Reading & Diagnostic Evaluation8
Math Developmental Assessment9
Science Developmental Assessment9

Special Programs/Reports

Early Intervention Programs9
Federal Funded Programs6
Title I - Reading/Math, Title II - Quality
Teachers, Title III - English Language
Learners
At Risk Funding7
Core Team Outreach, Homeless, Police
Liaison
Reading Recovery8
Safe & Connected Goals11

BETTENDORF COMMUNITY SCHOOL DISTRICT

The Bettendorf Community School District is a flagship school district established in 1907. The District provides a wide variety of educational programs for preschool through 12th grade students living within the District boundaries, nearly nine square miles of Bettendorf, Iowa as well as a small section of Davenport, Iowa. There are eight schools in the District: six elementary schools, one middle school, one high school with an alternative high school program (shared with two other neighboring school districts).



Above State & National Averages

Results from 2009-2010 testing show that Bettendorf Community School District students' continue to exceed state and national averages. Our high level of academic achievement is a credit to our students and teachers, and could not be attained without the positive collaborative relationship between students, parents,

community, and the school district.

Although testing is essential in education, academic excellence is not defined solely on the basis of high scores on a standardized assessment. Academic excellence occurs when students engage in rigorous and relevant educational experiences that link learning to life with passion, purpose and pride so that all students can make a positive difference.

I invite you to read through our District Report Card and learn more about our district and our student achievement. The report reveals areas where we excel as well as areas we need to focus on for improvement.

I also encourage you to help support education by getting involved through volunteering, attending public events at our schools, and becoming aware of issues affecting local education.

Thank you for your support and interest in the Bettendorf Community School District.

Sincerely,

Theron J. Schutte, Ph.D.
Superintendent

Passion
Purpose
Pride!

Vision

Bettendorf Community School District will link learning to life with passion, purpose and pride so that all students can make a positive difference.

STUDENT INFORMATION

ENROLLMENT (Oct. 2010)

Bettendorf High School (9-12)	1,445	Paul Norton Elementary (K-5)	444
Bettendorf Middle School (6-8)	1,039	Thomas Jefferson Elementary (EC-5)	154
Grant Wood Elementary (EC-5)	332	<i>Elementary Total</i>	<i>1,933</i>
Herbert Hoover Elementary (K-5)	395	PreSchool with Local Providers	250
Mark Twain Elementary (EC-5)	301	Total Students Served	4,667
Neil Armstrong Elementary (EC-5)	307	<i>Weighted Students Served</i>	<i>4,543</i>

EC - Early Childhood Special Education Enrollment numbers include open enrolled students.

Four Year Enrollment History

(Weighted students served - Includes preschool students with local providers)
 2010-2011 4,543 2009-2010 4,555 2008-2009 4,537 2007-2008 4,514

STUDENT ETHNICITY (2009-2010 Iowa Department of Education Data)

	Elem	MS	HS	District		Elem	MS	HS	District
Amer. Indian	.3%	1%	1%	1%	Hispanic	7%	5%	5%	6%
Asian	3%	2%	2%	2%	Pacific Island	0%	.1%	.1%	.1%
Black	7%	4%	5%	6%	White	82%	87%	87%	85%

CLASS SIZE AVERAGES (Oct. 2010)

Elementary					
K	1	2	3	4	5
22.77	23.62	23.23	25.31	26.67	26.25

Middle School				
Grade	Lang. Arts	Math	Science	Soc. Studies
6	26.38	25.43	27.31	27.31
7	27.58	23.87	26.67	27.69
8	23.92	20.47	24.64	24.25

High School							
Subject	Average	Sections	Courses	Subject	Average	Sections	Courses
Lang. Arts	24.00	136	22	Science	25.70	107	18
Math	22.97	117	17	Social Studies	22.79	129	16

Elem Class Size Average
Elem - 24.59 Core - 16.03

Elem - Number of kindergarten-5th grade students divided by number of sections. Core teachers work with small groups of 1st-2nd grade students on reading and math.

CLASS SIZE LIMITS

Grades K-2 - 25
 Grades 3-5 - 27

AVERAGE DAILY ATTENDANCE

K-8	2009-2010	2008-2009	2007-2008	2006-2007
BCSD	96%	96.05%	95.93%	96.1%
State	N/A	95.84%	95.72%	95.83%

STUDENT GENDER

	Elem	MS	HS	District
Male	52%	52%	51%	52%
Female	48%	48%	49%	48%

FREE & REDUCED QUALIFYING

Families that meet income eligibility are able to receive free or reduced school meals and fee assistance. Below is the percentage of BCSD students receiving Free & Reduced benefits.

2010-2011 - 26% 2009-2010 - 25.6% 2008-2009 - 22.7% 2007-2008 - 20.7%

BCSD STAFF

A total staff of 594 are employed by the District in full or part-time positions for 2010-2011.

Accounting	5
Building Administrators	13
Administration	9
Counselors	13
Custodians/Maintenance	34
Food Service	35
Nurses	7
Outreach	3
Paraeducators	111
Secretaries	41
Teachers	290
Technology	3
Transportation	20
Other	10

BCSD Faculty

All classes are taught by highly qualified teachers.

11

Years with the District
 (AEA9 & State Average - 11.2)

14.2

Years in education
 (AEA9 Average - 16.5 | State Average - 14.8)

45.4%

Teachers with advanced degrees
 (AEA9 Average - 41.9% | State Average - 29.2%)

41.5

Age of teachers
 (AEA9 Average - 45.7 | State Average - 42.2)

(2009-2010 Iowa Dept. of Education)



How does the District select annual

GOALS?

The Iowa Department of Education requires that school districts establish an annual goal for each educational level (elementary, middle school and high school). Goals are established based on need for improvement as shown on subgroup data from ITED (Iowa Tests of Educational Development) and ITBS (Iowa Tests of Basic Skills) testing. Goals often continue for multiple years.

Mission

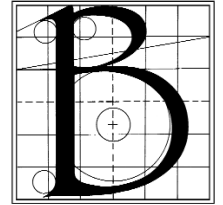
Educational excellence is the foundation of the Bettendorf Community School District. Working in partnership with the family and community, we will instill and nurture in all students the knowledge, skills, creativity, and confidence to pursue their dreams and to succeed in a global society.

DISTRICT GOALS

All PK-12 students will achieve at high levels in reading comprehension, prepared for success beyond high school.

All PK-12 students will achieve at high levels in mathematics, prepared for success beyond high school.

All PK-12 students will achieve at high levels in science, prepared for success beyond high school.
(PK-12 - prekindergarten through 12th grade)



BETTENDORF
COMMUNITY
SCHOOL
DISTRICT

2009-2010 DISTRICT READING GOAL

ELEMENTARY - 3rd-5th Grade Proficiency Goal

Increase the percentage of students in the 3rd through 5th grade span who demonstrate proficiency by scoring above the 40th percentile as measured by National Percentile Rank on the Reading Comprehension subtest of the Iowa Tests of Basic Skills.

2009-2010	Students above the 40th percentile	84.69%
2008-2009	Students above the 40th percentile	88.48%

This is a 3.79% decrease from the previous year.

Goal not met. The district did not reach its annual reading improvement goal for 3rd - 5th grade students. The following actions will be implemented during 2010-2011:

1. The Bettendorf Literacy curriculum work done in 2009-2010 to align with Iowa Core will be realigned with the new Iowa Core than now contains the national Common Core. In addition, the defined responsibilities for each grade level by quarter will be monitored and evaluated with vertical articulation. Instructions and assessments will also be correlated.
2. The District will continue researching Best Practices in Education and bring in quality professional development on the Best Practices.
3. The District will revise Reading and Title I services to better meet the needs of the students. We will also develop a consistent process that will identify those students with the most need for additional Reading services.

2010-2011 Goal:

Increase the percentage of students in the 3rd through 5th grade span who demonstrate proficiency by scoring above the 40th percentile as measured by National Percentile Rank on the Reading Comprehension subtest of the Iowa Tests of Basic Skills. In 2009-10, 84.69% of students in the 3-5 grade span scored at the proficient level.





2009-2010 DISTRICT MATH GOAL

MIDDLE SCHOOL - 7th Grade Proficiency Goal

Increase the percentage, from 6th grade, of 7th grade students who demonstrate proficiency by scoring above the 40th percentile as measured by National Percentile Rank on Math Total of the Iowa Tests of Basic Skills.

2009-2010	Students above the 40th percentile	86.8%
2008-2009	Students above the 40th percentile	82.57%

This is a 4.23% increase from the previous year.

GOAL ACHIEVED!



2010-2011 Goal:

Increase the percentage, from 7th grade, of 8th grade students who demonstrate proficiency by scoring above the 40th percentile as measured by National Percentile Rank on Math Total of the Iowa Tests of Basic Skills. In 2009-10, 86.8% of students in 7th grade scored at the proficient level.

2009-2010 DISTRICT SCIENCE GOAL

HIGH SCHOOL - 11th Grade Proficiency Goal

Increase the percentage of 11th grade students who demonstrate proficiency by scoring above the 40th percentile as measured by National Percentile Rank on the Science subtest of the Iowa Tests of Educational Development.

2009-2010	Students above the 40th percentile	81.3%
2008-2009	Students above the 40th percentile	81.2%

This is a .1% increase from the previous year.

GOAL ACHIEVED!



2010-2011 Goal:

Increase the percentage of 11th grade students who demonstrate proficiency by scoring above the 40th percentile as measured by National Percentile Rank on the Science subtest of the Iowa Tests of Educational Development. In 2009-10, 81.3% of students in 11th grade scored at the proficient level.



Equity Statement

It is the policy of the Bettendorf Community School District not to discriminate on the basis of race, color, gender, creed, marital status, sexual orientation, gender identity, national origin, religion, disability, geographic location or socioeconomic background in its educational programs, activities, or employment practices. If you believe you have (or your child has) been discriminated against or treated unjustly at school, please contact Assistant Superintendent Mike Raso at 563/359-3681.



Test scores are only

ONE

measure of educational excellence.

Assessment of student performance is an important component of instruction and is accomplished in ways that measure both the quality of the learning process and outcomes. Attitudes, motivation, caring, and a positive environment are also essential factors in a total education.

Assessment methods include student portfolios, teacher observations, long-term projects, anecdotal records, writing samples, student interviews, teacher-made tests, standardized norm reference tests, and criterion reference tests.

FEDERAL & ARRA FUNDS

The Bettendorf Community School District received nearly \$4M in federal funds to help support programming in 2009-2010. Of that funding \$2.2M was from ARRA (America Recovery & Reinvestment Act) funds.

Title I - Reading/Math

Title I is a federally funded supplemental program to improve student achievement. Students receive instruction on an individual basis through the first grade Reading Recovery Program and in small groups at other grade levels. The BCSD employed seven Title I reading/math teachers during the 2009-2010 school year.

The District received \$293,082 in federal funds and \$99,208 in ARRA funds to help support elementary reading programs in the 2010-11 school year.

Title II - Quality Teachers

Title II funds are allocated to improve student achievement. During 2009-2010 the District used Title II to help fund elementary teachers who worked with small groups of children during guided reading.

The District received \$119,562 in federal funds to help support elementary guided reading.

Title III - ELL (English Language Learners)

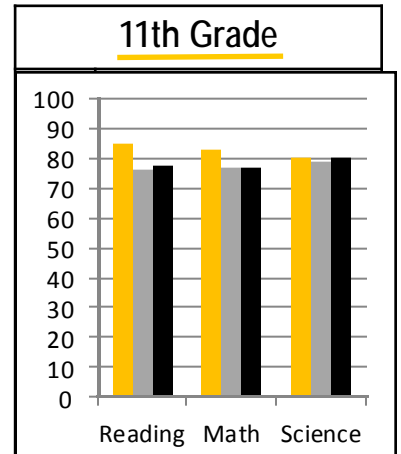
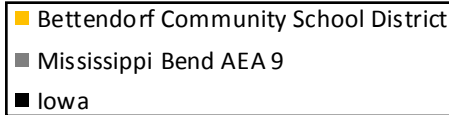
The BCSD ELL instructional program helps students become English proficient in the language skills of reading, writing, speaking, and listening. In 2009-2010, the District employed one full time teacher coordinator and three part time tutors to work with ELL students and families.

The District received \$4,435 in federal funds to help support ELL in the 2010-11 school year through Title III funds.

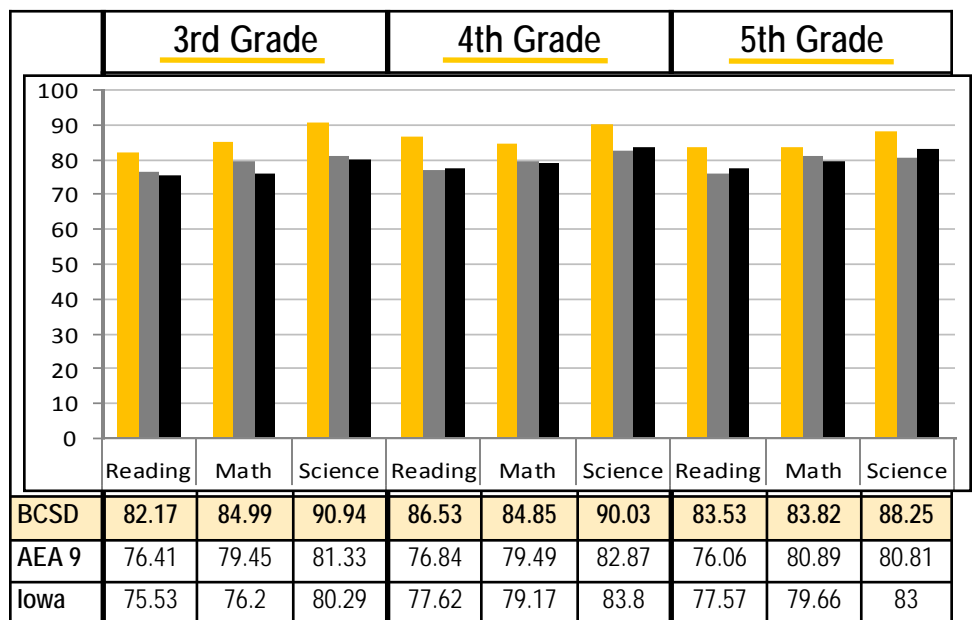
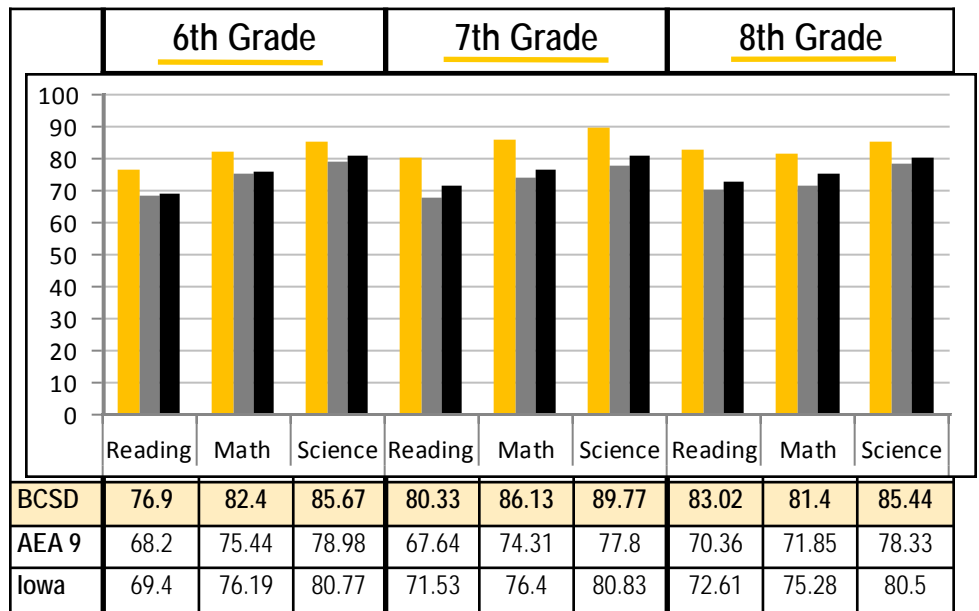
REGIONAL & STATE COMPARISON

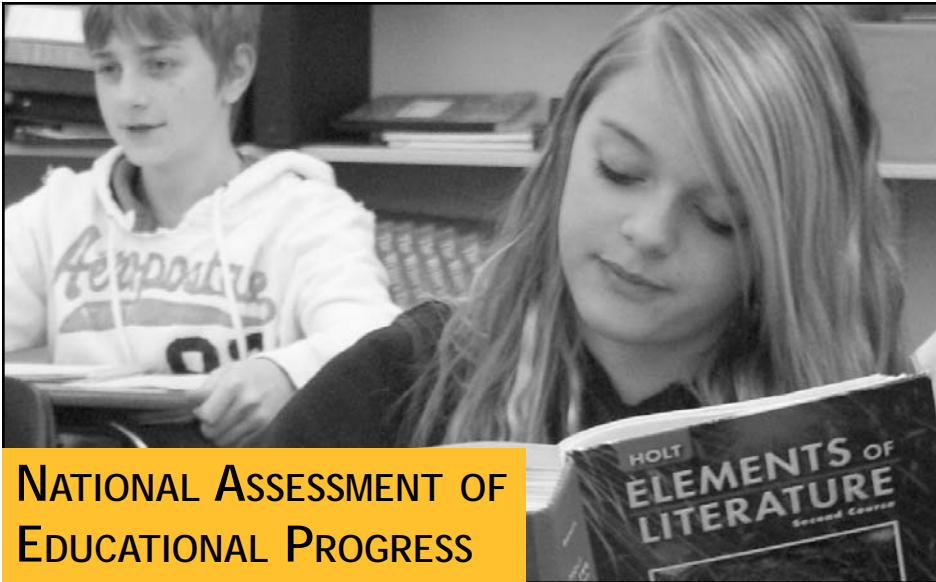
USING PERCENTILE RANKS

Data available on the Iowa Department of Education - APR State Student Achievement Data website:
<https://www.edinfo.state.ia.us/data/aprchart.asp>



The Mississippi Bend Area Education Agency (AEA 9) is one of nine AEAs in the state created to provide educational services to local schools. The Mississippi Bend AEA area includes all of Clinton, Scott and Muscatine counties, as well as parts of Cedar, Jackson and Louisa counties.





NATIONAL ASSESSMENT OF EDUCATIONAL PROGRESS

The information below includes the 2009 average scale score and percent of students at each achievement level for Iowa and the nation. NAEP is an integral part of our nation's evaluation of the condition and progress of education.

In Iowa, NAEP scores are available at the state level; no individual student, school, or district level results are available.

AVERAGE SCALE SCORE		Average Score	Below Basic	Basic	Proficient	Advanced	
<u>Reading</u>	Grade 4	Iowa	221	31%	35%	27%	7%
		Nation	220	34%	34%	24%	7%
	Grade 8	Iowa	265	23%	45%	30%	2%
		Nation	262	26%	43%	28%	2%
<u>Mathematics</u>	Grade 4	Iowa	243	13%	45%	36%	5%
		Nation	239	19%	43%	33%	6%
	Grade 8	Iowa	284	24%	42%	27%	7%
		Nation	282	29%	39%	25%	7%

SOURCE: U.S. Department of Education, Institute of Education Sciences, National Center for Education Statistics, National Assessment of Educational Progress (NAEP), 2009 Assessment.

Note: NAEP "Percent At or Above Basic" is the most directly comparable statistic for ITBS/ITED "Percent At or Above Proficient."

INCLUSION RATES		<u>Reading</u>		<u>Mathematics</u>	
Percent included in the assessment		Grade 4	Grade 8	Grade 4	Grade 8
<u>Students with Disabilities</u>	Iowa	71.6%	87.7%	71.7%	83.9%
	Nation	71.4%	84.3%	72.1%	78.2%
<u>Limited English Proficient Students</u>	Iowa	80.1%	93.9%	81.4%	84.7%
	Nation	83.8%	94.4%	82.5%	91.9%

SOURCE: U.S. Department of Education, Institute of Education Sciences, National Center for Education Statistics, National Assessment of Educational Progress (NAEP), 2009 Assessment.

AT-RISK FUNDING

BCSD receives special funding to help support "at-risk" students. An at-risk student may need additional support to help meet some goals of the educational program (academic, personal/social, career/vocational). At-risk allowable growth funding supports dropouts and returning dropouts.

Core Team Outreach

The Core Team Outreach Program supports the District's elementary and middle schools with a staff of three who provide interventions to at-risk students and their families.

The District will spend \$80,829 in At Risk and ARRA (American Recovery & Reinvestment Act) funds to help support Core Team Outreach in the 2010-11 school year.

Homeless

BCSD works to help assure that all students are afforded an opportunity to pursue their right to an education. Staff work with homeless families and students to connect them with support, services and supplies.

The District received \$6,950 in ARRA funds to help support homeless assistance programs in the 2010-11 school year.

Police Liaison

The Bettendorf Community School District partners with the Bettendorf Police Department to provide a police liaison officer at both the Bettendorf Middle School and the Bettendorf High School. The officers work with school administration, staff, students, and families to help students be successful in school.

The District will spend \$89,534 of At-Risk funding funds to help support the Police Liaison program in the 2010-11 school year.

A continuous commitment to READING & WRITING

The Bettendorf Community School District staff knows that a solid foundation in reading and writing is important to the educational success of all students in every grade level and in every subject. Teachers integrate a variety of techniques at each grade level to help students improve their ability to read and write for success. Elementary teachers use a balanced instructional approach to teach literacy skills and strategies with a focus on authentic experiences and differentiation to meet students' individual needs. At Bettendorf Middle School, teachers integrate increasingly more complex literacy concepts across curricular areas while teaching for learner differences. At the high school level, students participate in required and elective options, following a sequential program that allows them to refine their literacy skills and explore various genres.

Our goal is to help instill and nurture a love for and understanding of reading, writing, listening, viewing, and speaking that will help our students realize success during their PK-12 education and throughout their adult lives.

READING RECOVERY

Reading Recovery is a short term intervention of one-to-one tutoring for our district's lowest achieving first grade students learning how to read. All six elementary schools have a trained Reading Recovery teacher who provides up to four individual students a half-hour lesson each school day for 12 to 20 weeks.

As soon as students can read within the average range of their classmates and demonstrate that they can continue to achieve without the support of the Reading Recovery teacher, their lessons are discontinued and new students begin individual instruction. An important component of the program is the support of parents who listen to their children read a previously-taught book each night.

DISTRICT DEVELOPMENTAL ASSESSMENTS

Developmental Reading Assessment

The Developmental Reading Assessment (DRA) was administered to all Bettendorf kindergarten and first grade students during the 2009-2010 school year. The assessment is administered as a pre-test in September and a post-test in April in grade one and is given to all kindergarten students at the end of the school year. Kindergarten students who are at Levels 2-4 are considered proficient; first grade students who perform at Levels 18-22 are considered proficient.

Percentage of students scoring at proficiency or greater :

	<u>Kindergarten</u>	<u>Grade 1</u>
2009-2010	91.5%	84.6%
2008-2009	93.2%	91.8%
2007-2008	92.4%	85.5%

Group Reading and Diagnostic Evaluation

The Group Reading and Diagnostic Evaluation (GRADE) is given as a pre and post-test assessment in grades 2-5. Post-test results for students at grade level (2.8, 3.8, 4.8, 5.8) are below for 2006-2007 (base line year), 2007-2008, 2008-2009, and 2009-2010.

Percentage of students scoring at proficiency or greater :

	<u>2009-2010</u>	<u>2008-2009</u>	<u>2007-2008</u>	<u>2006-2007</u>
Grade 2	78.9%	71.6%	70.1%	75.0%
Grade 3	70.2%	82.6%	68.2%	68.8%
Grade 4	77.3%	71.7%	72.7%	71.1%
Grade 5	76.5%	77.3%	78.3%	76.6%



DISTRICT DEVELOPMENTAL ASSESSMENTS

1st-5th Grade Math

Students in 1st-5th grades were administered the District Math Assessment. The math assessment assesses students' abilities to reason, solve problems, and communicate through the application of mathematical concepts and procedures. Students solve open-ended problems using multiple solution strategies.

Percentage of students scoring 85% or greater (*Students scoring 85% and above on the assessment are considered proficient.*):

	<u>2009-2010</u>	<u>2008-2009</u>
Grade 1	70.0%	83.3%
Grade 2	50.8%	66.7%
Grade 3	49.3%	64.8%
Grade 4	26.4%	31.1%
Grade 5	17.5%	33.9%



EARLY INTERVENTION PROGRAMS

The goals of the Early Intervention programs are to:

- Reduce class size ratios to approximately 17:1 during reading/language arts instruction
- Improve student achievement in reading at grades K-2
- Provide a solid academic foundation in skill readiness for students to be successful learners

To accomplish these goals, the following strategies were adopted and implemented:

- Continued professional development in assessment, data-driven instruction, and literacy strategies
- Additional staff to reduce class size ratios in grade 1 to a district average of 16:1 during a 3-hour language arts block and in grade 2 to a district average of 17:1 during a 2-hour language arts block
- Two hours of paraeducator time assigned to each kindergarten classroom to reduce the adult-student ratio to 11:1 for a 2-hour block of literacy instruction

These strategies yielded the following student achievements:

- 91.5% of the kindergarten students were reading books at Reading Recovery Levels 2-4 by the end of the year (students are not assessed beyond Level 4 on the DRA).
- 84.6% of the first grade students scored at the proficient level (greater than Level 16) on the DRA at the end of the year; 41.5% of those students read at a Level 30 (students are not assessed beyond Level 30) compared to 37.1% in 2008-2009.
- 78.9% of the second grade students were reading at grade level (2.8) on the Group Reading Assessment and Diagnostic Evaluation at the April testing compared to 71.6% in 2008-2009.



High School Science

During 2009-2010, all high school students enrolled in biology were assessed on two components of scientific inquiry: data collection and data analysis. These were scored using a rubric with 25 points possible. Students who received 20-25 points exceeded expectations and scored in the high performance band; those scoring 11-19 points met the expectations for the intermediate performance band; and those scoring less than 11 points did not meet the grade level expectations and performed within the low performance band.

In 2010, 95.9% of the students demonstrated proficiency on the benchmark.

PERFORMANCE BAND

	High	Interm.	Low
2009-2010	60.2%	35.7%	4.1%
2008-2009	73.9%	18%	8.1%
2007-2008	32.5%	53.2%	14.3%

CLASS OF 2010

Post-Secondary Plans

- 320 Seniors who intend to pursue post-secondary education/training
- 359 Total number of seniors who have graduated
- 89% Total percentage
Total percentage 2009 - 88.63%

Core Program

- 359 High school graduates who completed a core program (*four years language arts; three years math, science, and social studies*)
- 359 Total number of high school graduates
- 100% Total percentage
Total percentage 2009 - 85.71%



Athletic Eligibility

The district enforces the State Athletic Eligibility Standards.

Our high school moved to a Composite schedule for 2008-2009. All grades 9-11 students must take a full load which is four blocks or a combination of blocks and "skinnies" equaling a full load. Grades 9-11 athletes must pass all classes to be eligible. Seniors are not required to take a full load. Their requirement, like grades 9-11, is to be passing all classes.

The assistance mentioned above is not athlete-specific. All high school students have access or are required to participate if receiving a D or F in a class.

BETTENDORF HIGH SCHOOL

2010 ACT Assessment Results

The ACT test assesses high school students' general educational development and their ability to complete college-level work. ACT compares the scores of students who have completed a recommended college preparatory core program (includes four years of English and three or more years of mathematics, social studies, and science).

In 2010 - 85% of the students tested (220) scored 20 or above.

20 is the cut score for probable post-secondary success.

BHS Senior ACT Data												
School Year	#	% of Class	COMPOSITE		ENGLISH		MATH		READING		SCIENCE	
			BHS	State	BHS	State	BHS	State	BHS	State	BHS	State
2009-2010	258	72%	23.8	22.2	23.7	21.8	23.3	21.8	24.2	22.6	23.4	22.3
2008-2009	223	74.1%	22.7	22.4	22.4	21.9	22.3	21.9	23.1	22.9	22.1	22.4
2007-2008	257	77.9%	23.9	22.4	24.4	21.9	23.1	22.0	24.2	22.9	23.4	22.3
2006-2007	237	69.7%	22.8	22.3	22.6	21.6	22.5	21.9	23.5	22.6	22.4	22.3
2005-2006	216	69.7%	22.6	22.1	23.1	21.6	22.3	21.8	22.6	22.5	22.1	22.1

2010 Advanced Placement (AP) Testing

AP consists of college-level courses taught at Bettendorf High School which offer special challenges and rewards for highly motivated students. The courses are taught by teachers who have had special training to present their subject area in this manner. Courses are part of a national program administered by the College Board and, in many cases, have a curriculum which is specifically designed to present the subject matter using college-level materials and techniques. Students may also elect to take an AP Exam in May for college credit.

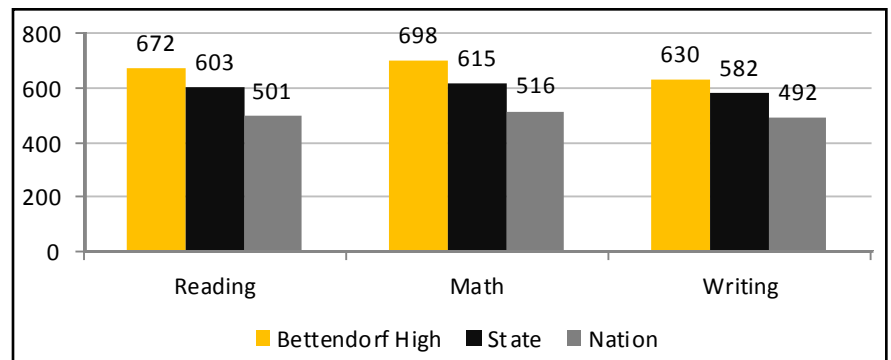
In 2010: 313 students enrolled in AP classes | Students took a total of 363 exams | 16 students took as many as 5 to 7 exams | The average score was 3.13 on a 1 to 5 scale

Bettendorf High School offers **16 AP classes** (*more than any other MAC school*):

Government and Politics, Economics, European History, Psychology, English Literature, Biology, Chemistry, Physics, Calculus (AB & BC), Statistics, French, German, Spanish, Studio Art, Music Theory

2010 SAT Results

The SAT is a test that measures students' basic knowledge of subjects they have learned in the classroom such as reading, writing and mathematics, in addition to evaluating how they think, solve problems and communicate. Many college admission officers use SAT scores to help them assess a student's academic preparedness for college. **Ten BHS students took the SAT in 2010. Their average scores outrank state and national averages.**



2009-2010 Annual SAFE & CONNECTED GOAL



All students will feel safe at and connected to school.

The following indicators will measure district progress with the goal:

- Attendance rate as measured by the average daily attendance data calculated and reported on the Adequate Yearly Progress report (AYP)
- Number of students in middle and high school receiving discipline referrals
- Number of students reported using alcohol or drug use from Infinite Campus reports
- Percentage of students in grades 6, 8, and 11 that report that they "feel safe at school"

Violence

Goal: The total number of incidents of fighting, theft, or property damage at Bettendorf Middle School and Bettendorf High School will be reduced by 10% compared to the number of incidents recorded during 2008-2009.
Goal Not Accomplished: 156 incidents in 2009-2010 compared to 151 incidents in 2008-2009

Climate

Goal 1: The average daily attendance rate reported on the AYP will increase by 0.5% at the K-8 level.
Goal Not Accomplished: 96% in 2009-2010 - 96.1% in 2008-2009

Goal 2: 95% of students will respond positively on an annual survey indicating they "feel safe at school."
Goal Not Accomplished: 89.0% in 2009-2010

Alcohol

Goal: The total number of incidents involving alcohol use/abuse will be 5 incidents or less.
Goal Accomplished: 2 incidents in 2009-2010 - 2 in 2008-2009 - 11 in 2007-2008

**GOAL
ACHIEVED!** 

Drugs

Goal: The total number of incidents involving drug use/abuse will decrease by 25% compared to 2008-2009.
Goal Not Accomplished: 18 incidents in 2009-2010 (increase by 28.6%) - 14 incidents in 2008-2009 - 9 incidents in 2007-2008

CLASS OF 2010

Graduation Rate

Year	BHS	IOWA
2009	86.3%	87.2%
2008	87.5%	88.7%
2007	92.1%	90.5%
2006	92.8%	90.8%
2005	92.8%	90.7%

Source: Iowa Department of Education, Bureau of Planning, Research, Development, and Evaluation, Project EASIER Files.

What does graduation rate measure?

The percentage of students who graduate, on time, within four years.

"Although not all students learn at the same time or in the same manner, all students can and shall learn."

BCSD Belief Statement

*BHS faculty and staff make it a priority to help **ALL** students graduate even if they need more than four years to accomplish that goal.*

Dropouts Rate

24 Total number of all non-graduates, grades 7-12
 2130 Total number of all students, grades 7-12
1.13% Total percentage
Total percentage from 2008 - 2.44%

Dropout means a school-age student who is served by a public school district, or accredited nonpublic school, and enrolled in any of grades seven through twelve and who does not attend school or withdraws from school for a reason other than death or transfer to another approved school or school district or has been expelled with no option to return.

Dropout data lags by one year. This data is from the 2008-2009 school year.

The District Report Card is the annual progress report summarizing student learning and other data. For more information about this report contact us at 563/359-3681.

Published November 2010

**Bettendorf Community School District
Administration Center**
800 23rd Street, Bettendorf, IA 52722
563/359-3681
www.bettendorf.k12.ia.us

ADMINISTRATION

Superintendent

Theron J. Schutte, Ph.D.

Assistant Superintendent

Michael Raso

Director of Financial & Business Services

Maxine McEnany

Director of Human Resources

Sue Alborn-Yilek, Ph.D.

Director of Student Services

Kim Hofmann

Director of Communications

Celeste R. Miller

Director of Food Service

Cindy Jacobsen

Director of Operations

John Campbell

Director of Technology

Marcia Hartman

Bettendorf High School

Jimmy Casas, Principal

Bettendorf Middle School

Lisa Reid, Principal

Grant Wood Elementary

John Cain, Principal

Herbert Hoover Elementary

Jeff Johannsen, Principal

Mark Twain Elementary

Caroline Olson, Principal

Neil Armstrong Elementary

Kevin Hatfield, Principal

Paul Norton Elementary

Julie Trepka, Principal

Thomas Jefferson Elementary

Lisa Stevenson, Principal



**Passion
Purpose
Pride!**

FINANCIAL INFORMATION

Financial Profile

	<u>2010-2011*</u>	<u>2009-2010</u>	<u>2008-2009</u>
Operating Expenditures	\$41,000,000	\$40,284,517	\$39,929,044
Assessed Valuation Per Pupil	\$287,994	\$287,994	\$279,690
Per Pupil Expenditure (<i>operating fund</i>)	\$8,800	\$8,844	\$8,801
Tuition Cost	\$5,957	\$5,842	\$5,620
Tax rate per \$1,000 of Taxable Valuation	\$15.00	\$14.85	\$14.85
\$.01 Local Option Sales Tax Revenue	\$3,100,000	\$3,342,860	\$3,859,816
Open Enrollment Revenue	\$3,360,000	\$3,298,871	\$3,103,326
Average Teacher Salary	\$55,500	\$54,433	\$51,172

General Fund

* 2010-2011 - Projected Data

Revenue

	<u>2010-2011*</u>	<u>2009-2010</u>	<u>2008-2009</u>
State	\$20,192,099 47%	\$17,504,523 43%	\$20,222,946 50%
Property Tax	\$14,916,290 35%	\$14,116,710 35%	\$14,057,789 35%
Federal	\$3,352,256 7%	\$3,888,589 10%	\$1,833,248 5%
Other	\$4,665,460 11%	\$5,021,819 12%	\$4,499,033 10%
Total	\$43,126,105	\$40,531,641	\$40,613,016

Expenditures

	<u>2010-2011*</u>	<u>2009-2010</u>	<u>2008-2009</u>
Salaries	\$24,600,000 60%	\$24,238,954 60%	\$23,748,394 59%
Benefits	\$7,380,000 18%	\$7,327,350 18%	\$7,073,535 18%
Services	\$4,510,000 11%	\$4,187,502 11%	\$4,191,295 10%
Supplies	\$2,050,000 5%	\$2,030,932 5%	\$2,369,509 6%
AEA	\$1,651,099 4%	\$1,605,501 4%	\$1,454,278 4%
Equipment	\$808,901 2%	\$894,278 2%	\$1,092,033 3%
Total	\$41,000,000	\$40,284,517	\$39,929,044

The BCSD Annual Report Card is also available online @ www.bettendorf.k12.ia.us

Iowa Department of Education Resources:

- Iowa Department of Education- www.iowa.gov/educate "Education Statistics" under Resources header - lower right
- Annual Progress Report - Student Achievement Data <https://www.edinfo.state.ia.us/data/aprchart.asp?s=00090000>
- School Profiles - <http://www.iowaschoolprofiles.com>

U.S. Department of Education - State Comparisons:

- <http://nces.ed.gov/nationsreportcard/statecomparisons/>

BETTENDORF BOARD OF EDUCATION

Directors (left to right): Barry Anderson, *President*, Jeannine Crockett, *Vice President*, Paul Castro, Melinda Duncan Foreman, Betsy Justis, Scott Tinsman, Pepper Trahan

