

SOUTH SENIOR HIGH 2010

District Name: MINNEAPOLIS PUBLIC SCHOOL DIST.

Principal: CECELIA SADDLER

Address: 3131 19TH AVENUE S
MINNEAPOLIS, MN 55407

Website:

Phone: 612-668-4300

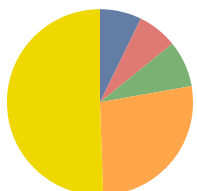
Grades served: 9,10,11,12

(Data from 2009-10 school year unless otherwise noted)

Student Information

2009-10 School Year Data

Enrollment Demographics



American Indian	7.1%
Asian	6.9%
Hispanic	8.3%
Black	27.0%
White	50.7%
Total:	100.0%

Student Population 1,963

Limited English Proficient 7%

Special Education 11%

Free and Reduced Price Lunch 42%

Is school eligible for open enrollment at any single grade level(s) for school year 2010-11? Yes

District Mobility

2008-09 School Year Data

Students from other districts who attend school in this district	1,382
Students from this district who attend school in another district	13,221
Rate of students transferring out of the district	11.32%
Rate of students transferring between schools in district	9.08%
Rate of students transferring into the district	8.31%

Adequate Yearly Progress

This school does not meet AYP requirements for 2010. The school is Title I in 2011 - Implementing Corrective Action.

Reading and Mathematics requirements are: All student groups of 40 or more must have a 95% participation rate in the accountability tests and all student groups of 20 or more must be proficient or on track for 100% proficiency by 2014.	Reading		Mathematics		Graduation
	Participation	Proficiency	Participation	Proficiency	
All students	Yes	Yes	Yes	Yes	This school has met requirements for Graduation. Schools must have an 80% Graduation rate from 2009 or show improvement when compared to previous years. AYP Graduation Rate 87.47%
American Indian/Alaskan Native	-	Yes	-	Yes	
Asian/Pacific Islander	Yes	Yes	-	Yes	
Hispanic	Yes	Yes	-	Yes	
Black, not of Hispanic origin	Yes	No	Yes	No	
White, not of Hispanic origin	Yes	Yes	Yes	Yes	
Limited English Proficient	Yes	Yes	-	Yes	
Special Education	Yes	Yes	No	No	
Free and Reduced-Price Meals	Yes	Yes	Yes	Yes	

2010 Minnesota Comprehensive Assessment Series II Scores

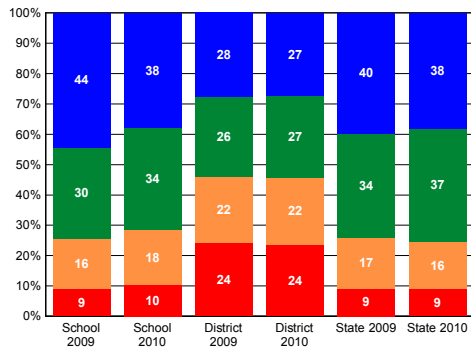
2009-10 School
Year Data

Exceeds standard
Meets standard

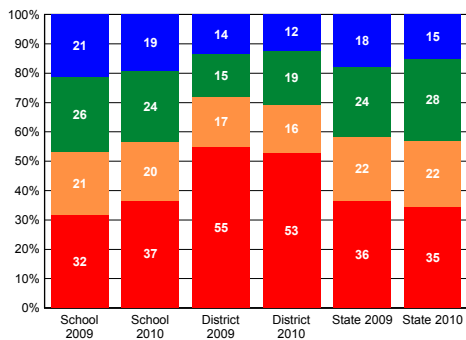
Partially meets standard
Does not meet standard

Values are percentages - test documents with valid
test scores relative to total test documents.

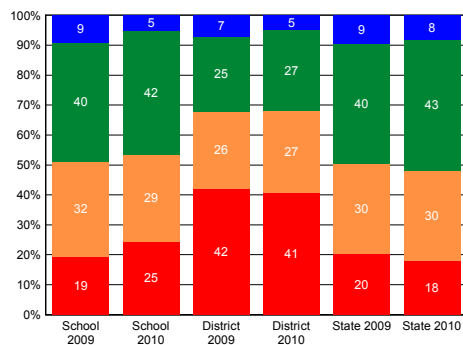
Reading - Grade 10



Math - Grade 11



High School Science



High School:

Students at this school can participate in:

Competitive Athletics	Yes
Non-competitive Athletics	Yes
Co-curricular Athletics	Yes
Dance, Media Arts, Music, Theater and/or Visual Arts	Yes

(Information collected directly from schools)

2009-10 School Year Data

Number of School Staff by Position	School #	State #	Teacher Degree Preparation	School %	State %
Teachers	90.02	52,734	Bachelor's	42.79%	45.14%
Media Specialists	1.80	767	Master's	54.99%	52.56%
Other Licensed Professionals	19.50	7,153	Doctorate	1.11%	0.19%
Paraprofessionals	36.09	11,948	Teacher Years of Experience	School %	State %
Administrators	4.00	2,742			
Other Staff Including Non-licensed Staff	14.75	33,718			
Total Staff	166.16	109,062	Less than 3 years	3.78%	4.11%
			More than 10 years	79.09%	64.46%

State Licensure Compliance	School %	State%	Federal Highly Qualified Requirements	School %	State %
Staff in compliance by licensure	99.48	98.42	Teachers meeting Federal requirements for "Highly Qualified".	100.00%	97.62%
Staff in compliance by permission	0.52	1.42	Teachers not meeting Federal requirements for "Highly Qualified".	0.00%	2.38%
This school is considered neither high nor low poverty.					
			Title I Paraprofessionals considered "Highly Qualified".	Data not available.	97.08%
			Inequitable Distribution of Non-HQ Teachers	Data not available.	
Full Time Equivalent (FTE)				Data not available.	

2009-10 School Year Data

Number of District Staff by Position	District #	State #	Teacher Degree Preparation	District %	State %
Teachers	2369.30	52,734	Bachelor's	39.01%	45.14%
Media Specialists	47.17	767	Master's	54.34%	52.56%
Other Licensed Professionals	663.70	7,153	Doctorate	0.47%	0.19%
Paraprofessionals	858.23	11,948	Teacher Years of Experience	School %	State %
Administrators	127.22	2,742			
Other Staff Including Non-licensed Staff	1470.16	33,718			
Total Staff	5535.78	109,062	Less than 3 years	8.87%	4.11%
			More than 10 years	71.08%	64.46%

State Licensure Compliance	District %	State%	Federal Highly Qualified Requirements	District %	State %
Staff in compliance by licensure	97.75	98.42	Teachers meeting Federal requirements for "Highly Qualified".	96.14%	97.62%
Staff in compliance by permission	1.87	1.42	Teachers meeting federal requirements for "Highly Qualified" in high poverty schools in district	95.01%	
			Teachers meeting federal requirements for "Highly Qualified" in low poverty schools in district	99.65%	
			Title I Paraprofessionals considered "Highly Qualified".	Data not available.	97.08%
			Number of Schools with Inequitable Distribution of Non-HQ Teachers	Data not available.	37
			Full Time Equivalent (FTE)		

Average Administrative Salaries	District	State	Teacher Salary Information	District	State
Superintendents:	\$190,218	\$110,449	Average Teacher salary	\$62,644	\$52,431
Principals:			Bachelor's Degree - beginning level*	\$34,153	
Elementary:	\$106,682	\$95,630	Bachelor's Degree - highest level*	\$69,835	
Middle School:	\$110,512	\$102,821	Master's Degree - highest level*	\$74,795	
High School:	\$113,517	\$92,489			
School Board Members: *	\$9,600				

(*Information collected directly from districts for 08-09 school year)

		Core Academic Classes	Core Academic Classes Taught by Highly Qualified Teachers		Core Academic Classes Not Taught by Highly Qualified Teachers	
		Total #	Total #	Percent	Total #	Percent
Elementary level	High Poverty Schools	7,662	7,450	97.23%	212	2.77%
	Low Poverty Schools	8,188	8,054	98.36%	134	1.64%
	All Elementary Schools	30,538	30,002	98.24%	536	1.76%
Secondary level	High Poverty Schools	8,583	7,797	90.84%	786	9.16%
	Low Poverty Schools	22,682	22,384	98.69%	298	1.31%
	All Secondary Schools	61,900	60,238	97.32%	1,662	2.68%
All Schools in State		92,438	90,240	97.62%	2,198	2.38%

Q Comp and Professional Development for Staff

Is the school/district approved for Q Comp? No

Information Coming Soon