

12/28/2010



MOVIE-
THEATRE.ORG

ST. LOUIS MOVIE THEATRES



Includes Alton | Mike Rivest

ST. LOUIS

Ambassador

701 Locust

1926-? 1975

2,999 seats

* August 26, 1926 opened and built for the Skouras Brothers

* Late 1920's sold to Warner Bros.

* Early 1930's sold to Fanchon & Marco

* 1935 movies only

* 1953 renovated for Cinerama at a cost of \$USD 146,000 and reduced seating to 1,400 seats. This was the largest Cinerama screen in the USA at the time at 77 x 28 ft. this theatre was leased to Stanley Warner Cinerama

* February 10, 1954 "This is Cinerama" opened

* Late 1950's sold to St. Louis Amusements

* 1959 Cinerama screen removed to a new building on Lindell

* 1970's The Ambassador under the direction of the Arthur Theatres made many attempts through the 70's to make it as a movie theater and live concert venue but they all failed



American

619 Market

1907-1953

500 seats.

* 1907 opened

* 1918 changed to vaudeville to legitimate

* 1930 owner: Rex Amusements

* 1953 The building was sold to another firm, which had it demolished for a 1,500-car garage.



Amtyis

4300 St. Ferdinand

? 1935-1958

This Afro-American theatre had 500 seats.

Annex

8006 Gravois

1923-1950

Apache

2227 South Broadway

? 1961-? 1964

Mid-America Theatres owned this theatre.

Apollo

323 DeBaliviere

August 19, 1936-1960

635 seats

* August 19, 1936 opened

* 1960 owned by Grace Peccoine and renamed Apollo art and shown foreign and independent films

* August 31, 1970 police raided the theatre and arrested the manager and projectionist for showing "Man and Wife", the print was confiscated.

* 1982 closed and demolished

Apollo Art

323 DeBaliviere

1960-1975

Arcade Airdome

4030 W. Pine

1924-? 1945

500 seats

This theatre had no roof, seating was provided on benches.

Arco

4207 Manchester

1911-? 1930

Owners:

1920 Famous Players Missouri Corporation

1925 others

1930 Warner Brothers

Armba Airdome

? 1940

Armo Airdrome

3192 Morganford

1937-1952

500 seats

Name came from ARsnel and MOrganford

The Wehrenberg chain initially planned to build an indoor theater at this site, but downgraded it to an airdome before construction began

Arsnel

3103 S Grand

? 1920-? 1930

Owners:

1920 Smith Management

1925 St. Louis Amusements

1930 Warner Brothers

Art

AKA: The Movies

3143 Olive

1938-1952

140 seats

Ashland

3520 N Newsted

1935-1955

650 seats

Owner in 1950: Wehrenberg

Astor

? 1925-? 1930

Owner in 1930: Leventhal & Goldman

Aubert

4949 Martin Luther King
April 1922-January 26, 1953
1064 seats
* April 1922 opened
* March 1946 renovated with 1,000 seats
* January 26, 1953 last showing. Now a dollar store



Avalon

4225 South Kingshighway
September 11, 1935-January 24, 1999
1042 seats
* September 11, 1935 opened
* 1942 Fanchon & Marco took it over
* Late 1950's to St. Louis Amusements
* 1972 remodeled
* Early 1980's St. Louis Amusements sells it
* January 24, 1999 final day of operation.



Baden

8201 N Broadway
1932-1972
750 seats
It was an independent theatre built, owned and operated by a German family.
Owners:
1935 Kaimann Theatres
1945 others
1950 Wehrenberg
1955 others

Best

South Jefferson at Cherokee Streets
? 1905
It had wooden benches for seats and Mrs. Wehrenberg would play the piano during the movies.

Beverly

Check St. Louis County documents.
(Outside of city limits)

Bismarck

1819 Lynch
1936-1948
433 seats



Booker Washington

2248 Market (was Olive Street)
1913-1956
* 1913 opened seating 506 often it was always full
* 1919 Josephine Baker made her stage debut here.
* 1956 closed
The street was known as Olive at the time of opening.

Bremen

1929 Bremen
? 1920-1968
900 seats
Owners:
1920 Joe Mocier
1925 others
1935-1940: Kaimann Theatres

Bridge

4869 Natural Bridge Av.
1920-1953
600 seats
* April 1920 opened as Bridge
* 1920's renamed for a short time as the Kazy theatre
* March 1935 closed
* April 1935 remodeled by Kaimann Theatres
* Late 1940's no longer listed as owned by Kaimann Theatres
* March 16, 1953 closed



Broadway

1440 S Broadway
? 1925-? 1925

Broadway

AKA: Cameo, Hollywood, Hollywood Newsreel, World
506 St. Charles
1922-1930

Broadway Drive-In

4200 S Broadway
1954-1962
800 cars
Ray Parker owned this drive-in

Broadway-Family

? 1920
Frank Root owned this theatre.

Cameo

AKA: Broadway, Hollywood, Hollywood Newsreel, World
506 St. Charles
1930-1936

Capitol

101 N 6th St
1921-1953
835 seats
Owners:
1930 Warner Brothers
1940 Fanchon & Marco

Carver

1310 Franklin
? 1945-? 1955
This Afro-American theatre had 652 seats

Casino

? 1920-? 1925

John Karzin owned this Afro-American theatre in 1920

The Civilized alternative to the megaplex

Chase Park Cinema 6

212 North Kingshighway

? 2000-

Chase Park Plaza Cinemas



Cherokee

2714 Cherokee

1912-1948

Wehrenberg owned this theatre until the early 1930's

Cinderella

2735 Cherokee

? 1920-? 1961

1,500 seats

Owners:

1920 E. Freund

1925 others

1930 Wehrenberg

Cine / A

? 1995

Wehrenberg owned this theatre.

Cine 1 & 2

? 1985

Wehrenberg owned this twin cinema.

Circle

4472 Easton

? 1940-1958

580 seats

1940 owner: Kaimann Theatres

City Drive-In

? 1961-? 1975

Colonial

AKA: Majestic, Monarch, West End

4819 Delmar

1910-1911

Columbia

5257 Southwest Av.

1919-? 1975

1,200 seats

Now a private home, the auditorium is a courtyard and the stage is the house proper.

Owner 1969-1975: St. Louis Amusements



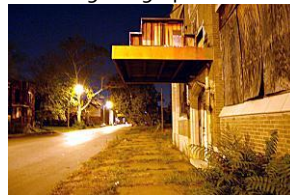
Comet

4106 Finney

? 1925-1972

This Afro-American theatre had 900 seats.

Owner 1961-1964: Goldman-Plikos Circuit



Compton

AKA: Park

3415 Park

1934-1945



Congress

AKA: Olive

4023 Olive

1915-? 1950

850 seats

1911-1915 opened as Olive.

Owners:

1925 H. M. E. Pasmegogu

1930 Warner Brothers

1940 Fanchon & Marco

Crest

AKA: Savoy

8800 Gravois

? 1955-? 1975

Owners:

1955 Fanchon & Marco

1961 St. Louis Amusements

Criterion

2644 Franklin

? 1930-1963

799 seats

This Afro-American theatre had 799-seats

Dakota

4557 Virginia

? 1940-1956

Wehrenberg owned this 430-seat theatre in 1950



Delmonte

? 1920-? 1925

St. Louis Amusements owned this theatre in 1925

Douglas

4201 Finney

? 1930-? 1955

This Afro-American theatre had 650 seats

Downtown Central

? 1920

Eagle

? 1920-? 1920

Easton

? 1940

Easton-Taylor

Easton St.

? 1930-? 1935

580 seats

Empress

3616 Olive

? 1935-? 1961

Owner 1955-1961: Ansell Brothers

1,476 seats

Excello

AKA: Salisbury
2405 Salisbury
? 1925

Fairy

5640 Martin Luther King (was Easton)
1923-1957
650 seats

Family

1611 S Broadway
? 1925-1951
Owner in 1930: Rex Amusements

Florissant

2138 East Grand
? 1940-? 1945
Owner in 1940: Fanchon & Marco

Florissant Cinema Gardens

? 1940-? 1945
Owner in 1940: Fanchon & Marco

Fort Jefferson

? 1940

Fox

527 N Grand
1928-1978
5,037 seats
* 1929 opened at the same time as its twin in Detroit as the Fox's studio Midwest flagship theatre.
* 1934 Fanchon & Marco takes it over
* 1930's-1950's big stage shows like Nat King Cole and major movies play here
* 1936 Fox studios go bankrupt
* 1940 Bob Hope and Jerry Colonna and his whole radio troupe to the fox and sold 80,000 tickets in a week.
* 1957 "The Spirit of St. Louis" had its world premiere here.
* 1959 the Arthurs buy it and place it in the St. Louis Amusements chain
* Late 1960-1970's the Fox reduced to screening Kung-Fu epics to nearly empty houses.
* 1978 closed
* 1981 renovated into a very popular performing arts center.
<http://www.fabulousfox.com/>



Garden

? 1935
800 seats

Garrick

517 Chestnut
1904-1954
1,206 seats
* 1904 opened
* 1930 for a short time it was owned by Loew's
* 1940's shown "adults only" movies
* October 19, 1954 demolished



Garrison

? 1925

Globe

? 1935-? 1940
750 seats

Granada

4533 Gravois
October 1, 1927-? 1983
1,566 seats
* October 1, 1927 opened by Warner Brothers
* Late 1930's taken over by Fanchon & Marco
* Late 1950's became part of St. Louis Amusements
* about 1983 closed.



Grand Central

? 1930-? 1945
1,800 seats
Owner in 1935: Fanchon & Marco

Grand Florissant

AKA: Tower
2138 East Grand
1919-? 1940
1,750 seats

Grand Opera

705 North Grand
1913-1945

Grant

? 1940-? 1945

Gravois

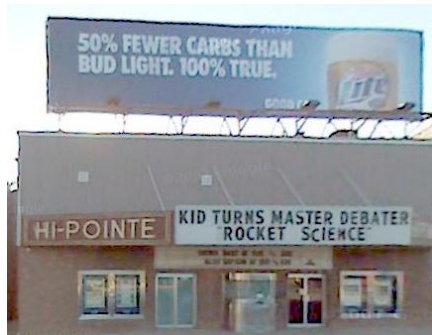
4519 Gravois
1926-1968
983 seats
* 1926 opened by Warner Brothers
* Late 1930 are taken over by Fanchon & Marco
* Late 1950's became part of St. Louis Amusements

Guild

? 1940
Fanchon & Marco owned this theatre

Hi Pointe

1001 McCausland
1922-
864 seats
* 1922 opened
* Late 1920 are taken over by Warner Brothers
* Late 1930 are taken over by Fanchon & Marco
* Late 1950's became part of St. Louis Amusements
* Early 1980's sold by St. Louis Amusements
* 1990's became part of Landmark Theatres.
* 2008 Landmark sells it



Hi-Way

AKA: Montgomery
2705 N Florissant
1937-1961
1,190 seats

Hollywood

AKA: Broadway, Cameo, Hollywood Newsreel, World
506 St. Charles
1936-? 1945
450 seats

Hollywood Newsreel

AKA: Broadway, Cameo, Hollywood, World
? 1945-? 1950

Hudson

Park
? 1935
500 seats

IMAX Gateway Arch's Odyssey

1993-



Irma

? 1935
500 seats

Ivanhoe

3239 Ivanhoe
1925-1965
678 seats
* 1925 opened
* 1942 sold to Sam Komm
* 1944 sold to Bess Schuler adding it to her chain of theatre, which had the Avalon, Columbia, Powhatan and Roxy
* 1944 she sold it to St. Louis Amusements, which was operating it for her
* early 1960's art house format
* 1965 demolished for an apartment building.

Ivory

? 1925
Wehrenberg owned this theatre.

Jane

? 1940
Kaimann owned this theatre.

Jem

? 1950

Juanita

AKA: Ritz
3147 S. Grand
1910-1924
Famous Players Missouri Corporation owned this theatre, no relation with Famous Players in Canada.

King Bee

1710 N Jefferson
1915-1950
700 seats
* 1915 opened by Mike Nash
* 1931 Benjamin Paulter took it over
* 1952 closed

Kings

818 N Kingshighway
1912-1935
1,180 seats
* 1912 opened, had an adjoining airdome that seated 3,600, the largest theatre at the time
* 1920 Owner: Famous Players Missouri Corporation
* 1923 Loew's cancelled its midwest vaudeville for movies
* Late 1920 are taken over by Warner Brothers
* 1935 demolished

Kingsland

6457 Gravois
1924-1951, 1984-1997
1,507 seats
* October 22, 1924 opened
* 1951 Stopped showing movies
* 1964 Heschel Lester, who ran it is Lester's Old Fashioned Gospel Singing.
* March 1984 reopened as cinema by Herman Carnell with "Sudden Impact", the new owner converted the small balcony into a 2nd cinema. Seating: 700 90 total 790 seats
* 1997 sold to a developer who demolished it for a supermarket, with the funds Carnell bought the Melba in DeSoto MO

Knickerbocker

AKA: Compton, Park
3415 Park
1910-1930

Laclade

3116 LaClade
1940-1963
550 seats
Owner in 1961: Goldman-Plikos Circuit

Lafayette

1643 S Jefferson

1926-1972

756 seats

- * 1926 opened by Warner Brothers
- * Late 1930 are taken over by Fanchon & Marco
- * Late 1950 are taken over by St. Louis Amusements

Lee

Lee/Newsted

? 1935-? 1955

665 seats

Owner 1935-1940: Kaimann

Lemax

? 1940

Wehrenberg owned this theatre,? Spelling error on the part of the Film Daily Yearbook.

Lemay

318 Lemay Ferry Road

? 1930-? 1945

Lexington

3408 Union

? 1936-? 1956

602 seats

Liberty

? 1920-? 1925

Lidel

? 1925

Wehrenberg owned this theatre.

Lincoln

? 1925

Lindell

3511 N Grand

1914-? 1961

1,650 seats

- * August 23, 1914 opened
- * 1919 sold to William Goldman
- * 1920 sold to Famous Players-Missouri
- * 1921 sold to City Wide Amusements and to St. Louis Amusements later that year
- * Late 1930's sold to Fanchon & Marco
- * Late 1950's became part of St. Louis Amusements

Lowell

5036 N Broadway

1910-1954

600 seats

Owners:

1940 Kaimann

1945 others

1950 Wehrenberg

Lyric

114 N 6th St

? 1920-1958

500 seats

Owners:

1920 Famous Players Missouri Corparation

1925 St. Louis Amusements

1930 others

This was a grindhouse theatre.

Macklind

5415 Arsenal

1932-1954

644 seats

Maffitt

2812 Vandeventer

? 1920-? 1956

950 seats

- * Late 1910 are opened by Famous Players-Missouri
- * Early 1920's sold to St. Louis Amusements
- * Early 1930's sold to Warner Brothers
- * Late 1930's sold to Fanchon & Marco
- * Late 1950's became part of St. Louis Amusements

Majestic

4819 Delmar

AKA: Colonial, Monarch, West End

1911-1913

Majestic

? 1920-? 1935

1,000 seats

1920 owner: John Karzin

Manchester

4247 Manchester

1922-1967

1,546 seats

- * 1922 opened by St. Louis Amusements
- * Early 1930's sold to Warner Brothers
- * Late 1930's sold to Fanchon & Marco
- * Late 1950's became part of St. Louis Amusements

Manion's Summer

? 1925-? 1930

Wehrenberg owned this theatre.

Maplewood

7170 Manchester

1930-1967

* 1930 opened

- * Early 1930's sold to Warner Brothers
- * Late 1930's sold to Fanchon & Marco
- * 1967 closed



Marguerite

? 1925

Wehrenberg owned this theatre

Marquette

1806 Franklin

1931-1957

700 seats

Martin Cinerama

AKA: Trans-Lux Cinerama

4218 Lindell

1963-1968

* January 10, 1963 opened by Martin Theatres

* July 8, 1968 sold to Trans-Lux

* February 19, 1974 closed to become a church, it has been demolished for a parking lot.



the FIRST NEW MILLION DOLLAR theatre built in ST. LOUIS in *35 years!*

the only SUPER CINERAMA THEATRE in the entire AREA

Super Cinerama will not or cannot be shown in any other theatre in the entire AREA.

Martin CINERAMA Theatre

ORDER BLANK

Martin Cinerama Theatre
3218 Lindell Boulevard • St. Louis 8, Missouri
Most Modern Form Projected Apparatus

Ready and set to go on 2, 3, 4, 5, 6, 7, 8, 9, 10, 11, 12, 13, 14, 15, 16, 17, 18, 19, 20, 21, 22, 23, 24, 25, 26, 27, 28, 29, 30, 31, 32, 33, 34, 35, 36, 37, 38, 39, 40, 41, 42, 43, 44, 45, 46, 47, 48, 49, 50, 51, 52, 53, 54, 55, 56, 57, 58, 59, 60, 61, 62, 63, 64, 65, 66, 67, 68, 69, 70, 71, 72, 73, 74, 75, 76, 77, 78, 79, 80, 81, 82, 83, 84, 85, 86, 87, 88, 89, 90, 91, 92, 93, 94, 95, 96, 97, 98, 99, 100

PRICE SCALE

MATINEE—2:00

Orchestra	\$1.55
Balcony	1.25
Box, Box & Balcony	2.25
Orchestra	\$2.25
Balcony	1.75

EVENING—7:30

Orchestra	\$2.25
Balcony	1.75
Box, Box & Balcony	\$2.25
Orchestra	\$2.25
Balcony	1.75

All prices include tax

Maryland

1856 S 13th St

1910-1957

585 seats

Owners:

1950 Komm

1955 Holiday Amusements

McNeir

2867 McNeir

? 1935-? 1950

583 seats

Melba

3608 S Grand

? 1920-1960

1,124 seats

Owners:

1920 Famous Players Missouri Corporation

1925 Wehrenberg

Melvin

2912 Chippewa

1914-1979

550 seats



Meramec

? 1925

Wehrenberg owned this theatre

Merry Widow

1539 Choteau

1937-1956

920 seats

* 1937 opened as New Merry Widow

* 1947 fire guts this theatre, rebuilt later that same year

* Late 1940's sold to Komm

* 1951 "New" dropped from the name

* Early 1950's owned by Holiday Amusements

* May 1956 closed

Michigan

7224 Michigan

? 1925-? 1964

1,100 seats

Wehrenberg owned this theatre



Mid-City

? 1969

Loew's owned this theatre.

Midtown

AKA: Empress (Live)

3616 Olive Street

? 1930

Warner Brothers owned this theatre.

Midtown Art 2

AKA: Uptown

4938 Delmar

? 1955-1967

* 1926 opened as uptown

* Mid 1950's renamed Midtown art and the balcony became a 2nd cinema and adult movies were shown

* 1967 closed

Mikado

AKA: Victory

Martin Luther King

1911-1940

1,348 seats

* 1911 opened

* Late 1920's owned by Warner Brothers

* Late 1930's owned by Fanchon & Marco

* 1940 renamed Victory



Missouri

634 N Grand

1921-1957

3,447 seats

* 1921 opened

* Late 1920's owned by Warner Brothers

* Early 1930's owned by Fanchon & Marco

* Late 1950's owned by St. Louis Amusements

* 1957 closed

* June 26, 1959 demolished

Moffett

? 1930

Warner Brothers owned this theatre.

Mogler

? 1920-? 1925
Owner in 1920: Joe Mocier

Monarch

AKA: Colonial, Majestic, West-End
4819 Delmar
1913-1914

Monroe

? 1925
H. M. E. Pasmezogu owned this theatre.

Montgomery

AKA: Hi-Way
? 1920-1937
1,000 seats

Moolah Temple Cinema

3821 Lindell
2004-
400 seats
* 1912 The Moolah Temple opened for the St. Louis Chapter of the Shriners
* 1988 Shriners closed it and moved out to the suburbs
* December 22, 2004 reopened as a cinema.



New

? 1940

New Criterion

AKA: Criterion
2644 Franklin
1919-? 1925
Owner in 1925: H. M. E. Pasmezogu

New Delmar

? 1925
H. M. E. Pasmezogu owned this theatre.

New Granada

? 1940

New Grand Central

705 N Grand
1913-1935
1,850 seats
* March 31, 1913 opened as Grand Central.
* Late 1910's The Skouras bros took it over
* 1928 shown 1st sound movie "The Jazz Singer", theatre was owned by Warner Brothers
* October 1, 1935 last performance
* Fanchon & Marco announced plans to convert this theatre into an arthouse cinema called Guild Cinema
* 1937 plans were dropped
* December 30, 1948 Demolition permit issued

New Movie

2351 Market
1921-1957
This Afro-American theatre had 268 seats.

New Shenandoah

2227 S Broadway
? 1930-? 1955
878 seats
Owners:
1950 Komm
1955 Holiday Amusements

Newstead

? 1925

Norside

3628 N Grand
1937-1966
1,000 seats
Owner 1955-1961: Ansell Brothers



North Grand Airdome

? 1925
St. Louis Amusements owned this outdoor theatre.

Novelty

? 1920-? 1930
Owners:
1920 Famous Players Missouri Corporation
1925 St. Louis Amusements
1930 others

Odeon

N Grand
? 1925-? 1935
1,907 seats
Owner in 1930: Warner Brothers

O'Fallon

4026 Florissant
1931-1959
750 seats
Owners:
1935 Kaimann
1945 Loew's
1950 others



Old Central

? 1920
Skouras Brothers owned this theatre.

Olympia

? 1920-? 1930
John Karzin owned this Afro-American theatre in 1925

Olympic

? 1920
Skouras Brothers owned this theatre.

Orpheum

AKA: American (II)
416 N 9th St.
1917-? 1964
1,992 seats
Owners:
1935 Warner Brothers
1940 others
1950 Loew's

Pageant

5851 Delmar
1915-? 1964
1,000 seats
* September 18, 1915 opened
* 1916 Skouras Brothers took this theatre over
* 1921 St. Louis Amusements takes this theatre over
* Late 1920's Warner Brothers takes this theatre over
* Late 1930's became part of Fanchon & Marco
* 1939 remodelled and seating reduced to 990
* Late 1950's became part of St. Louis Amusements
* 1960's roadshow engagement, seating reduced to 907

Palace

? 1930
Afro-American theatre

Palm

3010 Union
May 15, 1926-January 6, 1953
700 seats
* May 15, 1926 opened
* January 6, 1953 closed
* 1965 demolished for additional parking for the GM plant down the street.

Park

AKA: Knickerbocker, Compton
3415 Park
1930-1934
595 seats
* 1910 opened as Knickerbocker
* 1930 renamed Park
* 1934 renamed Compton

Park (Delmar St.)

AKA: Pershing
5917 Delmar
January 19, 1914-1919
* January 19, 1914 opened as Park
* 1919 Renamed Pershing
* 1935 demolished

Pauline

5000 Claxton Avenue
1932-1956

Peerless

1915 S Broadway
1916-1957
738 seats
Owners:
1920 Frank Root
1925 others
1930 Rex Amusements
1935 others
1950 Komm
1955 Holiday Amusements

Pershing

AKA: Park
5917 Delmar
1919-1935
* January 19, 1914 opened as Park
* 1919 Renamed Pershing by Famous Players Missouri
* Late 1920's taken over by Warner Brothers
* 1935 demolished

Plaza

1200 Clara
? 1925-? 1955
550 seats

Plum

? 1930

Plymouth

1175 Hamilton
? 1935-? 1958
500 seats

Princess

2841 Pestalozzi
1925-? 1950
650 seats
This theatre had an outdoor airdome before it was air-conditioned.

Queens

4705 Maifit
1919-1955
630 seats
This theatre had an outdoor airdome before it was air-conditioned.

Radio

Shaw
? 1935
682 seats

Radio-Orpheum

? 1930
Owner in 1930: Leventhal & Goldman

Rainbow

N Broadway
? 1925-? 1935
363 seats

Red Wing

Virginia
? 1930-? 1935
450 seats

Regal

3144 Martin Luther King
1931-1986
846 seats
This theatre catered to Afro-American audiences, in the early 1960's it was owned by The Goldman-Plikos Circuit



Retina

? 1925-? 1930
Afro-American theatre.

Rialto

? 1920

Rio

5566 Riverview
Nov 22, 1939-1973
1,012 seats
Owners:
1950 Fanchon & Marco
1961 St. Louis Amusements

Ritz

AKA: Juniata

3147 S Grand

1924-? 1975

998 seats

* 1910 opened as Juniata

* 1924 renamed Ritz when the Ansell Brothers took over



Rivoli

AKA: Towne

210 N 6th St

? 1925-? 1969

816 seats

Owner in 1930: Leventhal & Goldman



Robin

5479 Robin

? 1930-? 1955

500 seats

Roosevelt

810 N. Leffingwell

1927-1991

591 seats

Afro-American theatre.

Roxy

5500 Lansdowne

? 1935-? 1955

600 seats



Royal

? 1920

Famous Players Missouri owned this theatre.

Salisbury

AKA: Excello

2394 Salisbury

1931-? 1955

450 seats

Owner 1935-1940: Kaimann

Senate

9 N Broadway

? 1930-1962

565 seats

Owner in 1935: Leventhal & Goldman

Owner in 1961: Goldman-Plikos Circuit

Shaw

3901 Shaw

1915-1957

996 seats

Owners:

1920 Skouras Brothers

1925 St. Louis Amusements

1930 Warner Brothers

1940 Fanchon & Marco

1961 St. Louis Amusements

Shenandoah

2312 S Grand

1913-1977

1,331 seats

* 1912 opened as a legitimate theater

* 1916 vaudeville and movies as it was

taken over by Famous Players Missouri

* Early 1920's owned by Stout Theatre

Circuit

* Late 1920's owned by Warner Brothers

* Late 1930's owned by Fanchon & Marco

* 1941 remodelled in an Art Moderne 703

seats on the main floor and 369 seats in the balcony

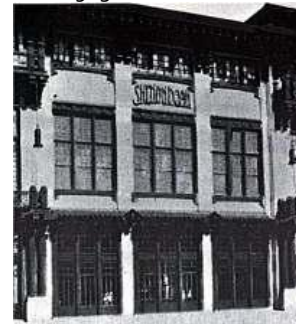
* late 1950's taken over by St. Louis

Amusements

* 1960's B movies were shown here

* 1977 closed and demolished for a parking

lot in 1983



Shenandoah

S Broadway

? 1935

1,050 seats

Sheubert-Rialto

318 N Grand

? 1935-? 1955

1,546 seats

St. Louis

Delmar/Grand

November 25, 1925-1966

3,869 seats

* Opened November 25, 1925 with 3,881 seats by Fanchon & Marco

* 1950's new widescreen screen installed

* Late 1950's were owned by St. Louis Amusements

* 1965-66 the Sound of Music was the last movie to be shown in this theatre.

* 1967 restoration work started for the symphony orchestra 2,700 seats

* 1968 reopened as a concert

* 1995 another restoration and the theatre renamed Powell Hall



St. Louis Science Center

OMNIMAX

5050 Oakland

1991-



Stadium Cinema I & II

614 Chestnut

1961-1983

* May 24, 1967 opened

* Early 1980's closed

Star

16 S Jefferson

1922-1969

627 seats

Afro-American theatre.

State

AKA: Loew's State

715 Washington

1923-1977

3,166 seats

* August 21, 1924 opened

* Early 1970's became a 2nd-run cinema

* August 28, 1977 closed



Strand

500 Market

? 1935-? 1955

This Afro-American theatre had 500 seats

Thunderbird Drive-In

3501 Hamilton

1957-1978

Mid America owned this drive-in.

Tower

2138 East Grand

? 1950-1972

1,850 seats

* September 1, 1919 opened as Grand-Florissant

* 1921 taken over by St. Louis

Amusements

* 1930 Renamed Florissant

* 1946 Renovated by Fanchon & Marco and renamed Tower

* Late 1950's became part of St. Louis

Amusements

* 1972 closed

Towne

AKA: Rivoli

210 N 6th St

1969-? 1975

Mid America owned this adult cinema.



Trans-Lux Cinerama

AKA: Martin Cinerama

4218 Lindell

1968-1974

Union

1510 Union Blvd.

1910-1968

925 seats

Owners:

1935 Warner Brothers

1940 Fanchon & Marco

1961 others

Union Station 10 Cine'

AKA: Union Station Cinemas 10

1820 Market

1989-2003

3,650 seats

* 1989 opened by Wehrenberg

* 1998 closed and taken over by Wallace Theatre Corporation

* 2003 closed when the landlord refuse to reduce the rent.



Uptown

AKA: Midtown Art

4938 Delmar

1926-? 1950

839 seats

* 1926 opened as uptown

* Mid 1950's renamed Midtown art and the balcony became a 2nd cinema and adult

movies were shown

* 1967 closed

Venus

? 1930-? 1945

Afro-Americana theatre.

Victory

AKA: Mikado

5955 Martin Luther King

1942-1955

1,101 seats

* 1911 opened as Mikado

* 1939 renovated in a ultra modern design

by Fanchon & Marco, seating 650 on the main floor and 453 in the balcony totaling

1,103

* February 1942 renamed Victory, the name was chosen in a contest

Virginia

5117 Virginia

1910-1956

Wehrenberg owned this 700-seat theatre.



Webster

2117 Hadley

1931-1956

700 seats

Wellston

6226 Martin Luther King

1921-1978

1,095 seats

* 1921 opened with 950 seats

* April 1944 burned

* November 1945 reopened 1,100 seats by Fanchon & Marco

* Mid 1960's sold

* 1978 closed

Wellstone

? 1955

West End

4819 Delmar

1937-1956

970 seats

West End Art

4819 delmar

1956-1964

West End Lyric

4819 Delmar

1914-1937

1,032 seats

* 1910 opened as Colonial with 990 seats, it flopped

* ? 1911 renamed Majestic

* 1913 renamed Monarch

* 1914 renamed West End Lyric

* 1917 Skouras Brothers takes it over

* Early 1920's St. Louis Amusements takes it over

* 1927 became a 2nd run house as it is taken over by Warner Brothers

* 1937 renovated and renamed West End

* Late 1930's taken over by Fanchon & Marco

* Early 1950's Fanchon & Marco sells it

* 1956 renamed West End Art and shown adult movies

* 1964 closed when the back of the roof caved in

Tennessee Williams patronized this theatre

Whiteway

1150 S 6th St

1915-1948

685 seats

Will Rogers

1217 Union blvd

? 1936-? 1962

700 seats

Wilson

? 1925

Woodland

? 1920-? 1930

Owners:

1920 E. Freund

1930 Warner Brothers

World

6th/St. Charles

? 1950-March 5th, 1974

505 seats

* 1922 opened as Broadway

* 1930 renamed Cameo

* 1936 renamed Hollywood

* 1937 "Ecstasy" an adults only movie opened

* WWII closed

* ? 1944 reopened as Hollywood Newsreel

* ? 1950's renamed World and shown adult movies

* March 5, 1974 closed, last movie: The Great Massage Parlor Bust.

Yale

3700 Minnesota

1914-1953

656 seats

Owner in 1925: H. M. E. Pasmazogu

Zelphia Airdome

? 1925

207 theatres in St. Louis City.

ST. LOUIS COUNTY

AFFTON

Crest
? 1950

BRECKENRIDGE HEIGHTS

Gem
? 1955

Opera House
? 1940-? 1945

BRENTWOOD

Brentwood
2529 Brentwood
1942-1986
680 seats
* March 14, 1942 opened by Komm Theatres
* Early 1950's part of the Holiday Amusements circuit.
* Late 1950's listed under Mid-America Theatres
* 1965 a bomb threat was made
* 1968 an bungled burglary (netting \$11.00)
* 1972 another bomb threat, showing adult movies at the time
* Early 1980's Mid-America Theatres sells it
* 1986 closed when AMC opened their quad down the road in the Galleria Mall

BRIDGETON

Bridgeton 4
AKA: Jerry Lewis I-IV
12758 Natural Bridge Road
? 1975-1976
1,050 seats

Jerry Lewis I-IV
AKA: Bridgeton 4
12758 Natural Bridge Road
1972-? 1975
1,050 seats

Parker's Skyline Drive-In
? 1955-? 1961

CHESTERFIELD

Chesterfield 14
3000 Chestfield Mall
March 30, 2006-
AMC owns this cinema.



Chesterfield 4
595 Chestfield Center
1978-2000
1,250 seats
Wehrenberg owned this theatre.

Clarkson 6 Cine'
1785 Clarkson
1984-2004
* 1984 opened by General Cinemas
* Late 1980's sold to Wehrenberg
1,756 seats

Four Seasons I & II
Four Season Mall
? 1961-? 1980
500 seats
Owner in 1975: Mid-America Theatres

Galaxy and MEGA Screen 14
450 THF Boulevard
2004-
Wehrenberg owns this cinema, which includes a large format screen.



Woods Mill Cinema I & II
21 Woods Mill Plaza
? 1975-1989
500 seats
Owner in 1980: Mid-America Theatres

CLAYTON

Screening Room at the Ritz
Carlton
100 E Carondelet
2001-2002

Shady Oaks
7630 Forsythe
1933-2000
676 seats
* May 3, 1933 opened
* Late 1930's taken over by Fanchon & Marco
* Late 1950's became a part of St. Louis Amusements
* 1973 renovated
* Early 1980's Wehrenberg takes it over
This theatre was popular with the Cardinals baseball team members.

COUNTRY CLUB HILLS

Northland Cinema
6 Northland Shopping Ctr
1966-1999
800 seats
General Cinemas twinned this cinema in the late 1970's

CRESTWOOD

66 Park-In
9438 Watson
September 26, 1947-1993
1,200 cars
* September 26, 1947 opened by Flexer Drive-In Theatres for the first season
* 1948 Wehrenberg takes it over
* 1993 closed

Crestwood
9821 Watson Road
? 1969-1986
Mid-America Theatres owned this theatre.

Crestwood Triplex
? 1985
RKO Century Warner owned this cinema.

Crestwood
248 Crestwood Plaza Mall
1986-
* 1986 opened with 5 screens
* Early 1990's expanded to 10 screens as part of mall renovations. This theatre is owned by AMC



CREVE COEUR

Creve Coeur 12 Cine'
10465 Olive
1999-
2,950 seats
AMC owns this stadium-seating cinema.



Creve Coeur Cine'
10570 Olive Street Road
July 19, 1969-1999
918 seats
* July 19, 1969 opened
* 1977 Star Wars opened here
* By 1998 triplexed
* 1999 the nearby AMC 12-plex opened forcing this theatre to close

West Olive 16
12657 Olive
1997-
3,750 seats
American Multi-Cinemas owns this cinema.



DES PERES

Des Peres 14 Cine'
1215 Des Peres
1989-
Wehrenberg owns this cinema



Des Peres 4 Cine'
1215 Des Peres
1973-1989
Wehrenberg owned this cinema.

Manchester Drive-In
12500 Manchester
1940-? 1969
500 cars
Owners:
1961 General Drive-Ins
1964 General Cinemas

Midwest Drive-In
? 1950

Great Escape 12
Bluffs 754 Gravois Bluffs Blvd
Late 2008-
Great Escape Theatres owns this cinema.



ELLISVILLE

Ellisville
1185 Manchester
1964-1980
1,000 seats
* 1964 opened by St, Louis Amusements
* Late 1970's twinned and taken over by Wehrenberg
* 1989 closed

EUREKA

Eureka 6

99 Hilltop Village Center
1984-2004

Wehrenberg owned this cinema. It has been demolished.



FERGUSON

Crown

AKA: Savoy
119 S Florissant
1969-1980

Wehrenberg owned this cinema.

Halls Ferry 14 Cine'

2845 Target

1978-2002

2,468 seats

- * 1978 opened by Wehrenberg with 6 screens
- * Early 1980's expanded to 8 screens
- * Late 1980's expanded to 14 screens
- * 2002 closed



Savoy

AKA: Crown
119 S Florissant
December 25, 1936-1969
Wehrenberg owned this theatre.

FLORISSANT

270 Drive-In

2925 Dunn

1971-1980

St, Louis Amusements owned this drive-in

Crosskeys Cinema

110 Cross Keys

1969-1999

- * 1969 opened by St, Louis Amusements
- * Early 1980's taken over by Wehrenberg
- * Late 1980's twinned
- * 1999 closed

Grandview Cinema

1625 Dunn

1962-1987

Twinned in the late 1970's by General Cinemas

Jamestown 14 Cine'

209 Jamestown Mall

<http://www.jamestown14.cine.com/>

1998-

2,123 seats

Owners:

1998-2009 Wehrenberg

2009- mall management.



Jamestown Cinema I & II

1972-? 1990

General Cinemas owned this cinema.

Paddock I & II

1002 Paddock Hills Shopping Center

1962-1989

Mid-America Theatres owned this twin cinema

Strollway Twin

1970

FRONTENAC

Frontenac Plaza Cinemas 6

210 Plaza Frontenac

1998-

1,400 seats

Landmark Theatres owns this art house cinema.



GLASGOW VILLAGE

Electric

? 1935-? 1955

325 seats

HAZELWOOD

St. Louis Mills Stadium & IMAX 18

5555 St. Louis Mills blvd.

2005-

This is the first and only theatre owned by Regal Cinemas in the St. Louis area. An IMAX screen was added in 2010.



Village

100 Village Square Shopping Center

? 1969-? 1975

* by 1969 opened by Mid-America

* Late 1970's 3 screens

* 1981 closed

JEFFERSON

BARRACKS

Army Hospital

? 1935-? 1940

Barracks

? 1955

JENNINGS

Cardinal

? 1935

Janet

6900 W Florissant

1937-1959

425 seats



KINLOCH

Harlem

? 1935-? 1945

KIRKWOOD

Kirkwood

116 N Clay

1924-? 1955

620 seats

Kirkwood Cinema

AKA: Ostage

338 South Kirkwood Road

1961-1998

* 1932 opened as Ostage

* 1961 Arthur takes it over and remodeled it as the Kirkwood Cinema, 596 seats, it was with the St Louis Amusements circuit until the early 1980's

* 1998 stopped showing movies became a children's theatre until about 2000

Osage

AKA: Kirkwood Cinema

338 Kirkwood

? 1945-? 1955

662 seats

LEMAY

Lemay

? 1930-? 1950

630 seats

Longwood (I)

9409 S Broadway

1927-1938

300 seats

Longwood (II)

9415 S Broadway

1938-1962

781 seats

Owner in 1950: Komm Theatres

South Twin Drive-In

2516 South Lemay Ferry Road

1954-1982

600 cars

Wehrenberg owned this drive-in

Southway

9736 S Broadway

November 5, 1938-1962

546 seats

* November 5, 1938 opened

* 1954 Wehrenberg's lease runs out

* 1962 closed



MANCHESTER

Colonial

? 1940-? 1955

400 seats

Manchester Cinema I & II

#2 Manchester Plaza

1967-? 1980

500 seats

Mid-America Theatres owned this cinema.

Lyceum

? 1935

MARLBOROUGH

Kenrick 8 Cine'

7505 Watson

? 1985-2008

Wehrenberg owns this theatre



MAPLEWOOD

Maplewood

7170 Manchester

? 1930-? 1969

1,353 seats

Owner in 1930: Wehrenberg

Owner Late 1950's to closing: Mid-America Theatres

Powhattan

3111 Sutton
? 1915-1949
954 seats
*? 1915 opened
* November 27, 1949 closed
* 2 "suspicious" fires in April 1956
* 1965 demolished

MATTESE

Keller 8 Cine'

4572 Lemay Ferry Road
December 07, 1984-? 2000, 2003-
2586 seats, 1,688 in 2009
* 1986 Opened Wehrenberg
* by 2000 closed
* 2003 New Era Cinemas reopens it



MEHVILLE

Lexington

3408 Union
1936-1956
602 seats

South City I & II

New Halls Ferry Road and Interstate 270
1962-1989
500 seats

MELWOOD

Lindbergh 8

7545 South Lindbergh Blvd
1987-2000
Owners:
1987 General Cinemas
1995 Wehrenberg



South County Cinema

Across the Lindbergh 8
? 1969-? 1985
General Cinemas owned this cinema, which
was twinned in the late 1970's



MOLINE ACRES

Lewis & Clark

Lewis & Clark (Highway 367) & Chambers
Road
? 1969-? 1980
St. Louis Amusements owned this cinema.



North Drive-In

9425 Lewis & Clark Blvd.
1948-2001
1,000 cars
1948 - opened by Wehrenberg
1974 - added a second screen
2001 - closed
2002 - sold



NORMANDIE

Normandy
? 1940-? 1950

Normandy Airdome

? 1940

OVERLAND

Holiday Drive-In

9900 Page
1952-? 1985
1,050 cars
4 screens in the late 1970's
* 1952 opened by Holiday Amusements
* Late 1950's taken over by Mid-America
* Late 1970's divided up into 4 screens
* Late 1980's closed

Overland

2512 Woodson
1932-1957
718 seats
Owner 1950-1957: Smith Management



PAGEDALE

Olympic Drive-In

6896 St. Charles Rock Road
? 1964-? 1975
400 cars
* Early 1960's opened
* Mid 1970's Wehrenberg takes this theatre
over and started to show adult movies,
they had to install a large screen around
the drive-in so it could not be seen from
Rock Road
* 1981 closed, now a junkyard



Rock Road Drive-In

6896 St. Charles Rock Road
? 1980-1981
400 cars

PEERLESS PARK

I-44 Drive-In

I-44 and Highway 141

1972-1983

Wehrenberg owned this drive-in.

PINE LAWN

Normandie

7324 Natural Bridge Road

1937-1951

Owner in 1940 listed as Wehrenberg

Studio

6235 National Bridge Road

? 1935-? 1961

670 seats

Wehrenberg owned this theatre in 1961

RICHMOND HEIGHTS

Esquire

6706 Clayton

November 8, 1939-

* November 8, 1939 opened by Komm Theatres on the outskirts of the city. 1,850 seats

* Early 1950's sold to Ansell Brothers

* Mid 1960's balcony became 2 more cinemas, sold to Mid-America

* Late 1980's an auditorium were added to the east side of the theatre making it 4 screens as this theatre is sold to American Multi-Cinemas

* Early 1990's main auditorium split into 4 cinemas making it 7 screens with 2,202 seats This theatre is very popular with its old Movie Palace atmosphere.

* Around the World in 80 days played here



Galleria 6

30 Saint Louis Galleria

? 1990-

American Multi-Cinemas sold it to St. Louis Cinemas in 2003



Richmond

1025 South Big Bend

1935-? 1955

Fanchon & Marco owned this cinema.

ROCKHILL

Paramount

? 1935

SAPPINGTON

Fox Mark Twain

4532 S Lindbergh

1969-1982

1006 seats

* Opened in 1969 by National General Cinemas, which became Mann Theatres.

* 1977 Star Wars played here

* 1982 stopped showing movies, now a banquet center



Ronnie's 20 Cine'

5320 S Lindbergh blvd

1998-

3,288 seats

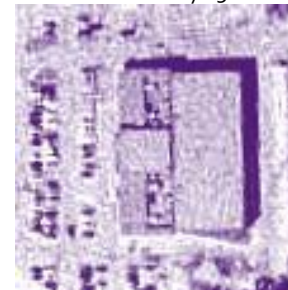
An IMAX system was installed in the largest cinema in 2005. Wehrenberg owns it, which is their flagship cinema.



Ronnie's 8 Cine'

? 1980-1998

Opened with 6 screens and expanded to 8 screens in the early 1980's



Ronnie's Drive-In

1948-1983

500 cars

Wehrenberg owned this drive-in



ST. ANN

4-Screen Drive-In

AKA: St. Ann Drive-In

10425 Saint Charles Rock

June 2nd, 1951-? 1955

1,000 cars

Airway Drive-In

10634 Saint Charles Rock

? 1950-? 1985

800 cars

* Late 1940's opened by Smith Management

* by 1961 owned by General Drive-Ins

* 1964 owned by General Cinemas

* Late 1970's sold to Wehrenberg who twinned it

* Late 1980's closed

Cypress Village

11129 Saint Charles Rock

1969-1986

1102 seats

* 1969 opened by Mann Theatres

* Late 1970's twinned

* Early 1980's sold to Wehrenberg

* 1986 closed and demolished for a strip mall

La Costa

? 1955

North St. Anne Drive-In ? 1955

Northwest 10

11150 Old St Charles Rock Rd
1986-2000
2,275 seats
American Multi-Cinemas owned this cinema.



Northwest Plaza 8 Cine'

300 Northwest Plaza
? 1990-2005
2,140 seats
* December 1989 opened in the mall by Wehrenberg
* Early 1990's expanded from 8-9 screens
* September 7, 2005 closed



Northwest Plaza Cinema

300 Northwest Plz
? 1969-? 1990
4 screens in the early 1980's, General Cinemas owned it

St. Ann

10552 Saint Charles Rock
? 1961-? 1980
St. Louis Amusements owned this cinema.

St. Anne Drive-In

10425 Saint Charles Rock
? 1955 -? 1985
1,000 cars
Twinned in the early 1980's

Westport 1 & 2

? 1975-2001
Wehrenberg owned this cinema.

ST. JOHN

Art Theatre

AKA: Gem, St. John Cinema
8840 St. Charles Rock Road
1970-? 1975
Mid-America owned this cinema.

Gem

AKA: Art, St. John Cinema
8840 St. Charles Rock Road
1926-1969
* 1926 opened as Gem by Henry Holloway
* November 23, 1935 completely renovated
* August 24, 1944 a fire in the rear of the theatre caused a part of the roof to collapse causing \$60,000 in damage
* January 16, 1946 reopened with stagehands picketing the Gem.
* Mid 1960's General Cinemas takes it over
* 1969 closed
* 1970 reopened as Art Theatre by Mid-America
* Mid 1970's renamed St. John's Cinema
* 1977 Mid-America drops it from their chain
* On April 29, 1979 two police officers demanded that the show stop so that they could search the premises for a couple of suspicious youths. When they failed to present a warrant to Moseley he turned them away. Early the next morning there was a fire that did damage to the amount of \$100,000. At first it was blamed on a faulty pop corn machine. A couple weeks later Moseley received a letter from a neighbor explaining that the fire was set by the two police officers. The two police officers were arrested along with a sergeant for arson. The theatre never reopened.
* Now a van conversion shop

St. John Cinema

8840 St. Charles Rock Road
? 1970-April 29, 1979
512 seats



SUNSET HILLS

Sunset Hills Cinema

10925 Sunset Plaza
* 1964 opened with 1 screen
* 1974 3 screens
* 1982 4 screens
* 1997 closed and demolished for the expansion of the mall.
General Cinemas owned this theatre.

UNIVERSITY CITY

Beverly

AKA: Fine Arts
7740 Olive
? 1940-1964
678 seats
* Late 1930's opened
* February 1964 taken over by Mid-America Theatres and renamed Fine Arts, family movies during the day and adult movies at night
* 1984 People Theatre takes it over
* 1986 closed



Fine Arts

AKA: Beverly
7740 Olive
February 1964-1984

Magic Lantern Cinema

? 1975
St. Louis Amusements owned this cinema.

Tivoli

6350 Delmar
May 24, 1924-
1,313 seats
* May 24, 1924 opened by St. Louis Amusements
* Late 1920's became part of Wehrenberg
* Late 1930's owned by Fanchon & Marco
* Late 1950's listed as a St. Louis Amusements theatre, which sold it in the early 1970's
* 1994 closed
* May 19, 1995 Landmark Theatres reopened this theatre as a triplex



University City

AKA: U City
6324 Bartmer
1936-1958
450 seats

Varsity

6610 Delmar
December 5, 1935-? 1961
993 seats
Ansell Brothers owned this theatre from the early 1950's until closing.



UPLANDS PARK

Studio
6227 Natural Bridge Road
1924-1956
Wehrenberg owned this theatre.

VALLEY PARK

Park
? 1935-? 1955

WILDWOOD

Wildwood 10 with Marquee Suites

16820 Main St.
2010-
This is owned by B & B Theatres

B&B Theatres
Wildwood 10
With Marquee Suites
Bringing Hollywood to your Hometown Since 1924

B&B invites you to join us for the opening of the Wildwood 10 With Marquee Suites!
Ribbon cutting ceremony begins at 6:00pm Oct. 1st.

B&B Grand Screen A MASSIVE WALL-TO-WALL SCREEN XL 3D DIGITAL PROJECTION 360° SOUND EXPERIENCE XL STADIUM SEATING	B&B Marquee Suites A LOBBY AND LOUNGE DEDICATED EXCLUSIVELY TO PATRONS 21 AND OLDER FULL BAR AND MENU CHOICES PLUSH LEATHER RECLINING SEATS
---	--

For Showtimes and Tickets go to B&BTHEATRES.COM

16820 Main Street, Wildwood, MO 63040

WEBSTER GARDENS

Ozark
103 E Lockwood
<http://www.ozarktheater.com>
1921-? 1970
1,000 seats
This theatre is in the process of being restored.



Ozark Theater
and AIRDOME
103 East Lockwood Avenue

A home institution, owned and operated for the best interests of the community by an independent corporation of Webster Groves stockholders.

Theater—Seating 1100 Summer Airdome—Seating 1500

Western Electric Wide Range Sound Equipment

Offering for your entertainment all of the best Pictures produced by

M-G-M	PARAMOUNT
FOX	UNITED ARTISTS
UNIVERSAL	R. K. O.
FIRST NATIONAL	WARNER BROTHERS

SPECIAL MATINEE FOR CHILDREN SATURDAY AT 2 P. M.
Except During Summer Months

THIS THEATER DOES NOT OPERATE ON SUNDAYS

We invite you and your family to be our guests. Simply clip this coupon, sign, and present at the box office.

Name _____
Address _____
No. in Family _____ Adults _____ Children _____

JOHN A. SHEPHERD,
Vice President and Manager.

Each Fifty-Cent

112 theatres found in St. Louis County

JEFFERSON COUNTY

ANTONIA

Miller's Hall
? 1945

ARNOLD

Arnold 14 Cine'

1912 Richardson Road,
1999-
Wehnerberg owns this cinema.



CRYSTAL CITY

Crystal
? 1935-? 1940

Hiway

212 Bailey Road
1947-1956
416 seats

Roxy

? 1940-? 1955
725 seats

Twin City Cinema Twin

416 Truman Blvd
1966-? 1985
Owners:
1966-1975 Mid-America
1985 RKO Century Warner

DE SOTO

Colonies
? 1955-? 1955

De Soto

1100 N. Main
? 1935-1958
638 seats
Collins Theatres owned this theatre. 1940-1945.

Jefferson

? 1930-? 1945
Collins Theatres owned this theatre. 1940-1945.

Melba

300 S. Main
? 2005-2008
The marquee came from the Melba theatre in St. Louis. No showtimes online in 2008.



Skyview Drive-In

? 1955-? 1985

Weeks

? 1955

FESTUS

Festus Cinemas

1522 West Parkway
1994-
* 1994 opened by B & B Theatres (Bills & Bagby) with 5 screens
* 1998 expanded to 8 cinemas and 1,600 seats.



Gem

? 1950-? 1955
464 seats

Idle Hour

? 1935-? 1935

La Jade

125 E. Main
? 1990-2002
643 seats



Miller

AKA: La Jade
125 E. Main
1936-? 1955

HERCULANEUM

Fairyland

? 1935

Riverview

? 1940-? 1945

Venita

? 1955-? 1955
385 seats

PEVELY

No. 61 Drive-In

? 1955-? 1985

21 theatres found in Jefferson County

ST CHARLES COUNTY

O'FALLON

O'Fallon
? 1945-? 1950

ST. CHARLES

Cinema 4 Center
672 N 5th St
1969-1988
750 seats
Owner 1980-1988: Wehrenberg

Family
? 1940-? 1945

Hollywood
? 1940-? 1945

Lindenwood College
? 1990

Plaza Drive-In

2140 W Clay
1957-1983
550 cars
Mid-America Theatres owned this drive-in



Regency 8

1095 Regency
? 1990-? 2000
AMC owned this cinema.



Ritz

412 S Main
? 1940-? 1950
300 seats

Roxy

218 N Main
? 1945-? 1961
Frisina Amusements owned this 349-seat theatre.

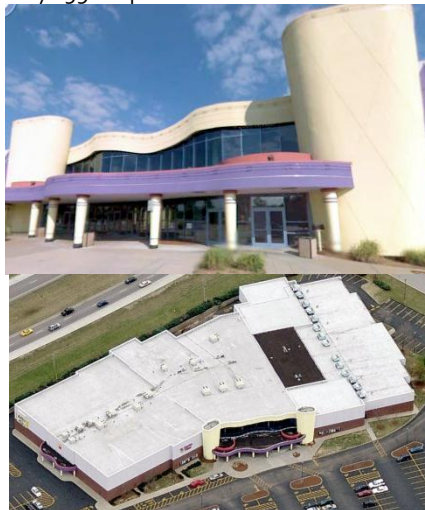
St. Andrew's Cinema

2025 Golfway
1969-
* 1969 opened by St, Louis Amusements
* 1983 became a discount cinema as is sold to Wehrenberg
* Late 1980's Wehrenberg sells it
* 1997 3 screens



St. Charles Cine'

1830 S First Capitol
1988-
* 1988 opened by Wehrenberg with 10 screens
* By 1998 expanded to 18 screens



St. Charles Drive-In

? 1955-? 1964
550 cars

Strand

220 2nd Av
1932-1968
946 seats
Frisina Amusements owned this 946-seat theatre.

ST. PETERS

I-70 Drive-In

4801 Veterans Memorial Parkway
? 1975-? 1985
800 cars

Mid Rivers Cine'

1220 Mid Rivers Mall
? 1990-
* Late 1980's opened with 10 screens by Wehrenberg
* 1998 expanded to 18 screens



WENTZVILLE

American

? 1950-? 1955
459 seats

16 theatres found in St. Charles County

MADISON COUNTY, IL

ALTON

Airdome

227 E 2nd St
1910-1919

Alton Cine' 1 & 2

2640 Claire Avenue
1976-1998
* April 9, 1970 opened by Wehrenberg
* April 9, 1998 city inspector found this theatre in a state of disrepair with filthy seats, it closed.



Bac Cine

? 1980-? 1985
BAC Theatres owned this cinema.

Bijou

1910

Cameo

AKA: Uptown
1622 Washington
1967-1988
* 1936 opened as Uptown
* Fall 1954 a new "panoramic" screen was installed
* 1967 renovated and reopened as Cameo by Mid-America Theatres
* Early 1980's BAC took it over
* 1987 Kerasotes takes it over and closed later that year.

Cameo Drive-In

1969-1980
Mid-America Theatres owned this drive-in

Dreamland

2405 State
1914-1917

Electric

230 Market
1907-1914

Gem

AKA: Ouatoga
1662 Washington
? 1924-1945
503 seats
* 1913 opened as Ouatoga with 503 seats.
* Between 1921-1924 renamed Gem
* 1945 closed

Grand

230 Market
1920-1977
1,037 seats
* 1920 opened at a cost of \$150,000 by Balaban and Katz Great States
* 1954 CinemaScope installed
* 1977 theatre was "temporarily" closed

Hippodrome

101 W Broadway
1912-1931

Nina

210 W 3rd St
1910-1912

Norside

2602 State
1937-1955
600 seats
* July 15, 1937 opened
* Early 1950's the union insisted upon having 2 men in the booth but the owner only wanted 1 man; theatre was closed until the owners won in June.
* January 5, 1955 closed

Ouatoga

AKA: Gem
1662 Washington
1913-? 1921

Princess

634 E Broadway
1912-1967
700 seats
* 1908 or 1912 opened
* 1915 Pipe organ installed.
* 1920's taken over by Balaban and Katz Great States
* 1937 This theatre gets an Art Deco facelift and the organ removed
* 1970 closed
* 1981 demolished for a parking lot

Starlight Drive-In

3500 College Avenue
1950-1984
Owner in 1980: BAC Theatres
Twinned in the late 1970's



State

1314 E Broadway
1939-1955
500 seats
* December 25, 1939 opened as "Alton's finest amusement spot" to a sold out crowd (in the one of the worst snowstorm to hit the area).
* 1955 closed
* Late 1950's converted into a storage space

Temple

200 East 2nd Street
1906-1937
* 1906 opened inside the Western Star Lodge of the I. O. O. F with 1102 seats
* 1937 2 fires in the basement in a 10-day period damaging the lobby.
* 1941 another fire force the building owners to tear the theatre building down
* 1976 demolished

Uptown

AKA: Cameo

1622 Washington

1938-1967

657 seats

* 1936 opened as Uptown

* Fall 1954 a new "panoramic" screen was installed

* 1967 renovated and reopened as Cameo by Mid-America Theatres

* Early 1980's BAC took it over

* 1987 Kerasotes takes it over and closed later that year.

COLLINSVILLE

Miner's

202 E Main

1920-? 1985

1,000 seats

Petit 4

2002 Mall St

1974-2004

* 1973 opened

* Early 1990 are taken over by the

Excellence Theatres Corporation

* By 1998 Carmike Cinemas takes it over

* February 19, 2004 closed

* March 20, 2004 burned



ShowPlace 10 BUILDING

This Kerasotes has been put on hold.

Strand

? 1920

Joseph Erber owned this cinema.

Will Rogers

103 E Main

1936-? 1961

600 seats

Owners:

1950: Kerasotes

1955: Mid-America

EAST ALTON

East Cinema 1 & 2

? 1980-? 1985

Boomer Amusement Corporation (BAC) owned this cinema.

Eastgate

625 Lewis And Clark Blvd

? 1990-

* Late 1980's opened by Kerasotes with 2 screens

* Early 1990's 6 screens

* 2010 Taken over by AMC



Ritz

405 St. Louis

1934-1987

500 seats

EDWARDSVILLE

Lux

AKA: Oh-Gee

114 N Main

1939-1958

600 seats

Oh-Gee

AKA: Lux

114 N Main

1920-1939

ShowPlace 12

6633 Center Grove

? 2000

Owners:

2000-2010 Kerasotes

2010- American Multi-Cinemas



Wildey

252 N Main

1909-1984

702 seats

* 1909 opened as a opera house and a meeting hall on the 2nd floor.

* 1937 renovated art Deco style.

* 1984 last movie: "The Big Chill"

GLEN CARBON

Cottonwood III Cinemas

Myrtle

? 1985-2007

Owners:

1985 Boomer Amusement Corporation (BAC)

1995 others

2000 Kerasotes

Imaginary

? 1935-? 1940

GODFREY

Green Valley Drive-In

Alton-Jerseyville road

1942

Short-lived drive-in

GRANITE CITY

Bac Cinema 4

? 1990

Boomer Amusement Corporation (BAC) owns this theatre.

City

1917 State

? 1950

300 seats

Franco and Marco Service Corp. own this theatre.

Columbia

? 1935-? 1945

Garden

? 1920

Lillian Amusement Co. owns this theatre.

Granite Cinema 3

1243 Merchanchaus Av.
August 20th, 2010-



Ken

3120 Namoki
1948-1958

Nameoki Cinema

30 Namoki Village
? 1975-2004

- * Opened in the early 1970's by Mid-America
- * Late 1970's: twinned
- * Early 1980 are taken over by Boomer Amusement Corporation (BAC)
- * Late 1980 are taken over by Kerasotes
- * 2004 closed

Rialto

1917 State
? 1920-? 1945
Owners:
1920: Lillian Amusement Co.
1925 others
1940 F & M St. Louis Theatres

Washington

1346 19th st
1923-1977
1,199 seats
* 1910 opened by Franchon and Marco
* 1923 closed and demolished for a new Washington Theatre by St Louis Amusements.
* 1946 fire in the theatre.
* 1975 renovated
* 1982 closed
* 1993 demolished for a bus station

HIGHLAND

Air Park Drive-In

? 1950-? 1955

Airport Drive-In

? 1950

Bartlett

? 1940

Lory

? 1945-
650 seats
Twinned in the late 1970's,
Owners:
1945-2010 Kerasotes
2010- American Multi-Cinemas



Opera House

? 1935

LIVINGSTON

Eagle

? 1930-? 1940

Heart

? 1935

LOVEJOY

Joy

? 1950-? 1955
385 seats

MADISON

Madison

1527 3rd st
? 1930-? 1955
500 seats

Newport

? 1945

Yalta

? 1950

MITCHELL

Bel-Air Drive-In

270/211
? 1955-1987
* Early 1950's opened by Mid-America
* Late 1970's twinned
* Early 1980's Boomer Amusement Corporation (BAC)
* 1987 closed



NAMEOKI

Ken

? 1950-? 1955
600 seats

Nameoki

? 1950-? 1955

ROXANNA

Cine

AKA: Roxana
400 N. Central Avenue
? 1990-2002
* 1949 a tornado blew off the roof
* February 2002 Kerasotes closes this theatre
* Now a community center for the church next door

Roxana

400 N. Central Avenue
? 1950-? 1955
600 seats

TROY

Lions

? 1950-? 1955
600 seats

Troy

? 1935-? 1945

UPPER ALTON

Uptown

? 1940-? 1945

WOOD RIVER

Altwood Drive-In

1949-? 1961

Capri Drive-In

? 1964-? 1980

Kilkare

56 E Ferguson

1915-1929

Midtown

149 E. Ferguson Avenue

? 1949-? 1956

650 seats

Wood River

113 N Wood River

? 1930-? 1961

1,050 seats

Bablan & Katz Great State Theatres owned
this theatre.

WORDEN

Redwing

? 1940-? 1945

68 theatres found in Madison County.

MONROE COUNTY, IL

COLUMBIA

State

? 1945-? 1950

1,351 seats

Turner Hall

? 1935-? 1945

WATERLOO

Capitol

Main

? 1935-? 1955

425 seats

Waterloo Cinema 8

113 Plaza Drive

? 2001-

RMC Theatres owns this cinema.



4 Cinemas in this county.

ST. CLAIR COUNTY, IL

BELLEVILLE

Airdome

335 W Main
1912-1920

BAC Cine

AKA: Quad
5700 N Belt W
1966-1985

1,400 seats
* 1966 with a single 800-seat auditorium
* 1985 3 more screens added
* 1990 Kerasotes leases this theatre
* 2000 closed



Cozy

23 W Main
1915

Cozy Airdome

9 N Main
1914-1915

Dreamland

13 N 2nd st.
1921-shortly after

Fairview Cinema 1 & 2

? 1980-? 1985
Boomer Amusement Corporation owned this theatre.

Gem

215 E Main
1911-1912

Illinois

320 W Main
? 1940-? 1964
910 seats
Owners:
1940 Fox Midwest
1961 NT & T Amusement Corporation

Lincoln

103 E Main
October 26, 1921-
1,514 seats
* October 26, 1921 opened at a cost of \$50,000
* 1927 new organ installed at a cost of \$30,000
* 1931 became part of the Fox circuit
* 1937 large chandelier installed in the auditorium
* 1953 CinemaScope installed
* 1980 Mann sells it to Richard Wright who splits it into 3 screens.
* 1988 Wright install a new vertical marquee
* 1996 new pipe organ installed
This theatre hosts live performances



Quad

5700 N Belt W
1985-2000
See BAC Cine for more information.

Rex

1415 W Main
1924-1953
600 seats
* 1924 opened
* Late 1920's this was the first Boomer Amusement theatre to be wired for sound
* 1953 closed
* Early 1980's demolished, a plaque in the now closed BAC Quad commemorated the Rex

Ritz

403 E Main
1929-1997
1,000 seats
* 1929 opened by Boomer Amusement Corporation
* 1946 renovated and enlarged
* 1971 The balcony was sealed off to become a 2nd cinema.
* 1980 The balcony became 2 screens
* 1990 Boomer Amusement Corporation sells it to Kerasotes, which screened 2nd run double in the main cinema downstairs and art films in the "Ritz Upstairs" balcony theatres.
* 1997 the Lincoln next door buys it but it did not stay open for long
* 2000 became a church

Scott Field

? 1935

Sky-Vu Drive-In

5700 N Belt W
July 8, 1949-
* July 8, 1949 opened by Boomer Amusement Corporation
* 1953 "wings" added for CinemaScope
* 1955 a tornado destroyed the screen and replaced with a larger 114 ft screen.
* 1966 Boomer Amusement Corporation opens the cine on the property.
* 1981 another storm damaged the screen and tower
* 1982 reopened with 2 screens
* 2007 Last season.



Washington

214 W Main
1913-1955

BROOKLYN

Travel Show

? 1940

CAHOKIA

Cahokia Drive-In

Route 3

? 1980-? 1985

Boomer Amusement Corporation owned this drive-in

Plaza Twin Cine

? 1980-? 1985

Boomer Amusement Corporation owned this twin cinema.

CASEYVILLE

East St. Louis Drive-In

1942-? 1969

* Publix-Great States owned this drive-in

French Village Drive-In

8601 St. Clair

? 1950-1984

* 1942 opened as East St. Louis Drive-in by Publix Great States with space for 500 cars. The screen had a stage and dressing rooms below it. This drive-in featured tiered ramps that cars had to back up to get out.

* Late 1940's renamed French Village drive-in

* 1970's switched to adult features

* 1984 closed

* Fall 2005 demolished



DUPO

Dupo

? 1935-? 1950

EAST ST. LOUIS

40th St.

4000 Waverly

? 1935-? 1945

650 seats

* 1921 opened as Colony

* About 1924 listed as Waverly

* About 1940 listed under 40th St. Theatre

* 1960's renamed Colony and became an adult cinema. (it moved nearby in the 1970's)

Airdome

1112 St. Clair

? 1916

This theatre had no roof, just a dirt floor and benches.

American

1026 Mississippi Avenue

? 1935-? 1945

750 seats

Avenue

219 Collinsville

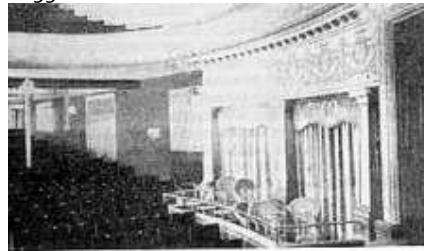
1907-1952

800 seats

* 1907 opened as Erba's

* By 1917 renamed Avenue

* 1952 closed



Bond

3617 Bond Avenue

1925-shortly after

Sam Greenberg owned this theatre

Broadway

AKA: Little Broadway

1320 E Broadway

1906-? 1945

This theatre catered to Afro-American patrons

Colony

AKA: 40th St, Waverly

4000 Waverly

? 1955-? 1975

Colony Theatre and Cocktails 3

4506 Forest Blvd

? 1980-

Adult cinemas.



Columbia

1501 State

1924-? 1935

628 seats

* 1924 opened as Columbia

* by 1942 renamed Roxy

Columbus

? 1930

De Val Drive-In

? 1955

DeLuxe

1500 Walnut

? 1935-? 1955

This Afro-American theatre had 500 seats.

Drake

418 Collinsville

1933-shortly after

Eagle

324 E Broadway

? 1909-? 1930

Erber's

AKA: Erber's, Majestic, Lyric, New Orpheum

349 Collinsville

1907

Erco

? 1920

Esquire

2416 State

? 1940-? 1961

750 seats

Frisina Circuit owned this theatre.

Falcon Drive-In

7400 Collinsville

? 1970-? 1980

Adult movies were shown here.

Gaty

1701 Gaty

1940-1951

500 seats

This theatre replaced an airdome on the site.



Granada

910 Exchange Ave

? 1940

Grand

AKA: Esquire, State

2416 State

? 1925-? 1945

Harlem

11 S Main

? 1950-? 1964

This Afro-American theatre had 500 seats.

Home

1701 Gaty

? 1930-1940

600 seats

This outdoor theatre had a dirt floor with benches. The Gaty theatre was built on the site.

Idlewood

2250 Illinois

? 1925

Liberty

321 Missouri

? 1925-? 1945

485 seats

Lincoln

? 1940

Little Broadway

1320 E Broadway

? 1950-? 1955

This Afro-American theatre had 600 seats

Lyric

AKA: Erber's, Majestic, Lyric, New Orpheum

349 Collinsville

1924-1931

Majestic

AKA: Erber's, Majestic, Lyric, New Orpheum

349 Collinsville

1907-1924

* February 24, 1907 opened as the Erber.

* September 1907 renamed Majestic (not to be confused with the Majestic at 244 Collinsville)

* 1924, renamed Lyric

* 1931 renamed New Orpheum



Majestic

242 Collinsville

1928-1960

1,767 seats

Balaban and Katz Great States owned this theatre.

Mounds Drive-In

AKA: Falcon Drive-In

7400 Collinsville

? 1949-? 1970

New Granada

? 1940-? 1945

New Orpheum

AKA: Erber's, Majestic, Lyric, New Orpheum

349 Collinsville

? 1931

Orpheum

301 Collinsville

? 1935-? 1940

Balaban and Katz Great States owned this 1,674-seat theatre.

Park

? 1935-? 1940

400 seats

Pontoon

1969-closed shortly after

Roosevelt

? 1940-? 1945

700 seats

Roxy

AKA: Columbia

1501 State

? 1940-? 1950

575 seats

Shop City Drive-In

5900 Summit

? 1956-? 1985

Mid-America owned this drive-in

St. Clair

818 St. Clair

? 1935-? 1945

900 seats

Star

? 1925

State

AKA: Grand, Esquire

2416 State

? 1930-? 1935

750 seats

Tokie

426 E Broadway

? 1916

Washington

817 Trendley Avenue

1928-? 1945

400 seats

Waverly

AKA: 40th Street, Colony

? 1924-? 1930

FAIRVIEW HEIGHTS

St. Clair 10 Cine'

50 Ludwig

? 1990-

Wehrenberg Theatres owns this cinema.



FREEBURG

Freeburg

? 1945-? 1950

Gayety

? 1930-? 1940

Owner in 1930: Boomer Amusement Corporation

LEBANON

Alamo

? 1935-? 1955

324 seats

Reopened as a playhouse called "Looking Glass" in 1972

MARISSA

Gem

? 1935-? 1955

290 seats

MASCOUTAH

Grand

? 1935

Norton

? 1945-? 1955

275 seats

NEW ATHENS

Community

? 1935-? 1940

Town

? 1945-? 1955

400 seats

NEW BADEN

Clinton

? 1940-? 1945

Modern

? 1940

State

? 1945-? 1955

300 seats

O'FALLON

O'Fallon

? 1940-? 1945

O'Fallon 15 Cine'

1320 Central Park

? 1998-

Wehrenberg Theatres owns this megaplex cinema.



Opera House

? 1935

State

Main

? 1940-? 1950

455 seats

82 listings