

General Information

OPEN 10 a.m. to 4 p.m. Tuesday – Saturday
CLOSED Sunday, Monday, and State holidays

Admission is free. Donations are welcomed.

GUIDED TOURS

Group tours by special arrangement

HAWAII STATE ART MUSEUM (HiSAM)

No. 1 Capitol District Building
250 South Hotel Street, 2nd floor
Honolulu, Hawai'i 96813
Phone: 808-586-0900
Fax: 808-586-0308
TDD: 808-586-0740
Website: www.hawaii.gov/sfca
Email: sfca@hawaii.gov

ACCESSIBILITY

Accessibility route is from the Richards Street entrance gate

TRANSPORTATION

TheBus

- From Waikiki: Route: #2 (School Street – Middle Street); Route #13 (Liliha – Pu'unui Avenue); or Route B City Express
- From Ala Moana Center: most 'Ewa (west) bound routes stop at or near the museum

For exact routes and schedules call TheBus at 808-848-5555 daily from 5:30 a.m. to 10 p.m. or visit www.thebus.org

The Waikiki Trolley

- The Red Line State Capitol stop is a short walk from HiSAM

PARKING

- Metered on-street parking and commercial parking lots are available within easy walking distance. Check posted rates and times
- Ali'i Place, directly across from the museum on South Hotel Street, entrance on Alakea Street up from King Street
- Honolulu City Municipal Parking Garage (underground), entrances on Alapa'i Street and Beretania Street
- Marks Garage at Chaplin Lane between Bethel and Nu'uaniu Streets, enter from Nu'uaniu Street
- Chinatown Gateway (Bethel Street between King and Hotel Streets)
- Kukui Plaza (Kukui Street between Fort and Nu'uaniu Streets)

METERED LOTS

- Beretania Street between Alakea and Bishop Streets
- Kina'u Hale (State Department of Health) at Beretania and Punchbowl Streets (enter from Punchbowl)
- State Capitol underground (enter from Miller Street)
- Kalanimoku Building underground at Punchbowl and Beretania Streets (enter from either street)

HAWAII STATE ART MUSEUM



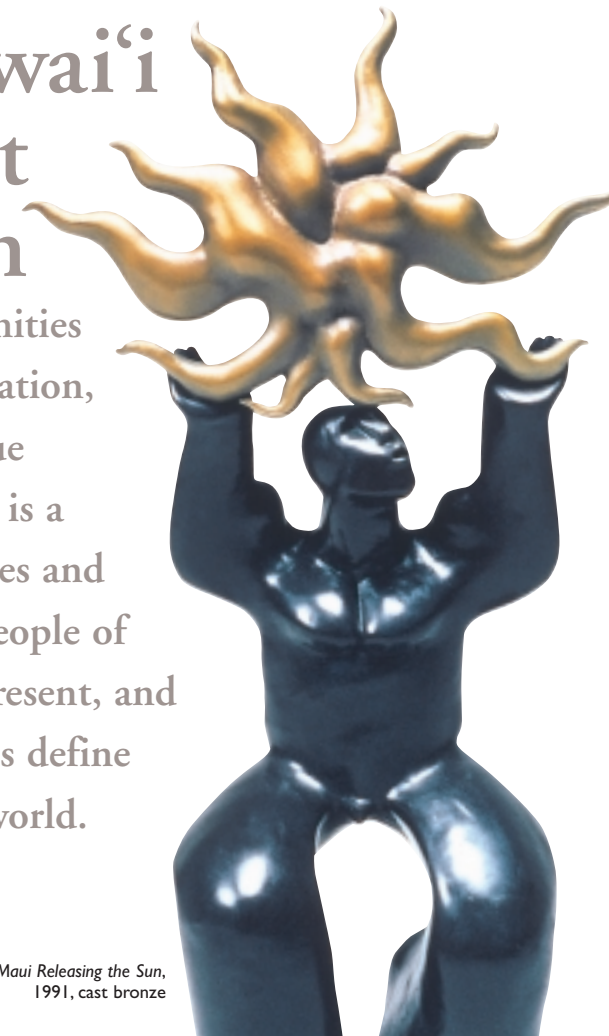
THE STATE FOUNDATION
ON CULTURE AND THE ARTS



Jean Charlot, *Ko Ke Kumulipo (The Drummer)*, 1954, oil on canvas

The Hawai'i State Art Museum

provides opportunities for insight, inspiration, and growth unique to each person. It is a mirror of our times and a mosaic of the people of Hawai'i – past, present, and future – that helps define our place in the world.



Shige Yamada, *Maui Releasing the Sun*, 1991, cast bronze

The Hawai'i State Art Museum

is dedicated to presenting the largest and finest collection of work by Hawaii artists. The museum honors and inspires artistic excellence and promotes education and cultural enrichment.

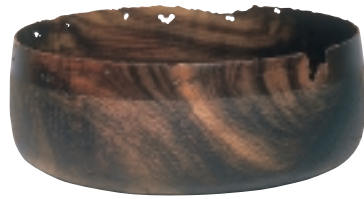
The Hawai'i State Art Museum marks a milestone for the State Foundation on Culture and the Arts (SFCA) and the fulfillment of a 35-year dream for a principal venue where the public can view a large selection from the SFCA's Art in Public Places Collection.

In 1968, Hawai'i leaders and civic planners recognized the Capital District's unique value as the seat of Hawai'i government, its architectural dignity and beauty, and its rich history and culture. They recommended the acquisition of the historic, Spanish-Mission style YMCA building for a gallery, restaurant, government offices and as a focal point for cultural activities.

The State of Hawai'i acquired the building in December 2000 and dedicated the second floor with its grand lobby, high ceilings, and architectural accents for the Hawai'i State Art Museum. Renovations began in November 2001 and the museum opened to the public on November 3, 2002.



The State Foundation on Culture and the Arts



Robert Hamada, *Bowl*, 1990, turned and carved kou wood

The State Foundation on Culture and the Arts was established in 1965 by the Hawai'i State Legislature as the state's official arts agency. The SFCA promotes, perpetuates, preserves, and encourages culture and the arts, history, and the humanities as central to the quality of life of the people of Hawai'i. Its programs include Art in Public Places; Grants; Arts in Education; Community Outreach; Folk Arts; History and Humanities, and Individual Artist Fellowships.

Inspire

Percent for Art Law

Art in Public Places Program (APP)

In 1967, the Hawai'i State Legislature passed the Art-in-State-Buildings Law. Signed by Governor John A. Burns, the law established the SFCA's Art in Public Places (APP) Program. Hawai'i became the first state to set aside one percent of the cost of state buildings to acquire and commission works of visual art that beautify and humanize the built environment. Since then, many states and municipalities have adopted this visionary legislation.

Today, the APP Collection, comprised of commissioned and relocatable artworks, has approximately 5,000 pieces of art by 1,400 artists. Displaying works in nearly 500 state offices, schools, college campuses, libraries, airports, and hospitals, the APP Program is a "museum without walls" that takes art to places where people can interact with it daily.

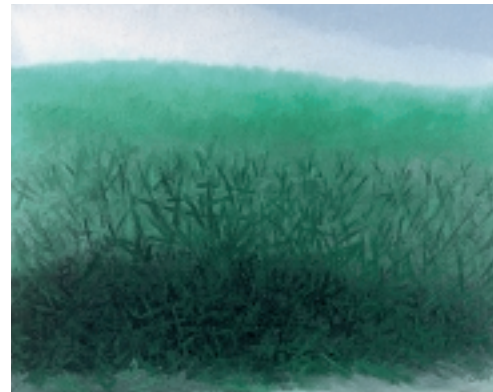
Commissions – usually monumental, site-specific pieces – are designed to grace Hawai'i public schools, libraries, auditoriums, gymnasiums, colleges, office buildings, hospitals, civic centers and airports.

The relocatable collection includes paintings, prints, drawings, photographs, textiles, and smaller-scaled three-dimensional works of art that can be moved and displayed in different buildings.

The objectives of the Art in Public Places Program are to enhance the environmental quality of public buildings and spaces throughout the state; cultivate the public's awareness of visual arts; contribute to the development and recognition of a professional artistic community; and acquire, interpret, preserve, and display works of art expressive of the multicultural heritage of Hawaii's people and the creative interests of its artists.



Reuben Tam, *Red Anahola*, 1974, oil on canvas



Francis Haar, *'Iolani Luahine*, 1961, black and white photograph



Isami Doi, *The Green Cradle*, 1957, oil on canvas

The Exhibition

The Hawai'i State Art Museum's inaugural exhibition, *Enriched by Diversity: The Art of Hawai'i*, includes 360 works by 284 artists that celebrate a rich artistic and cultural legacy. In a wide variety of materials, styles, and techniques, the exhibition illustrates the varied influences that fuel the creativity of Hawai'i artists.

Predominately comprised of works dating from the 1960s to the present, the exhibition showcases artists and their contributions toward understanding the people of Hawai'i and their aspirations.

Throughout the exhibition, Western aesthetic meets Pacific Island and Asian cultures, a testament to the Islands' unique geographic location and history as a crossroads for people and ideas.

Enriched by Diversity: The Art of Hawai'i will be an ongoing exhibition with periodic rotations of selected works from the APP Collection. The Museum will also feature thematic exhibitions from the APP Collection.

History of the Building

The Hawai'i State Art Museum is located on the site of the original Royal Hawaiian Hotel built in 1872 during the reign of Lot Kamehameha V. Situated across from 'Iolani Palace, it was Honolulu's leading hotel for 45 years, hosting distinguished foreign visitors and friends of the royal family.

The YMCA purchased the building and opened the Army and Navy YMCA in 1917.

By 1926 the wooden structure, showing its years, was demolished for the current Spanish-Mission style concrete and stucco building. Designed by local architects Walker Emory and Marshall Webb, with San Diego architect Lincoln Rogers, the new building opened in 1928 and featured cast stone detailing, iron grill work, and ornamental light fixtures. The Italian scrollwork and other architectural details were modeled after the Davanzatti Palace in Florence. Original tile work can be seen on the first and second floors.

Renamed the Armed Services YMCA after World War II began, the building housed and entertained United States military personnel throughout the war years. In 1978 the building was added to the National Register of Historic Properties. After extensive restorations in 1989 it was renamed the No. 1 Capitol District Building.



Rick Mills, *Once Empty, Twice Full*, 1992, cast glass and bronze



Herb Kawainui Kane, *The Discovery of Hawai'i*, 1974, oil on canvas

Feel



Satoru Abe, *East and West*, 1961, copper



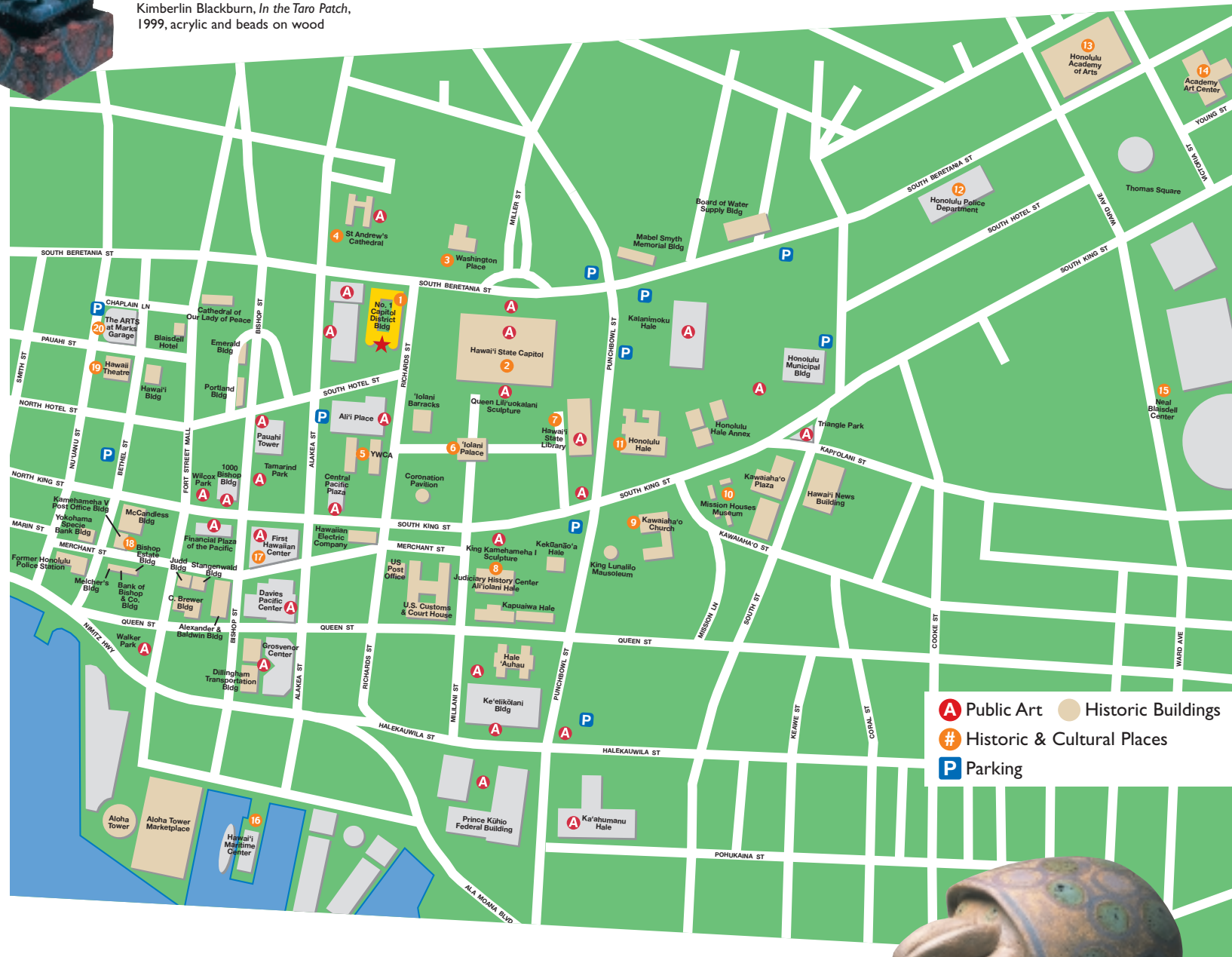
Imagine



Art and History All Around You

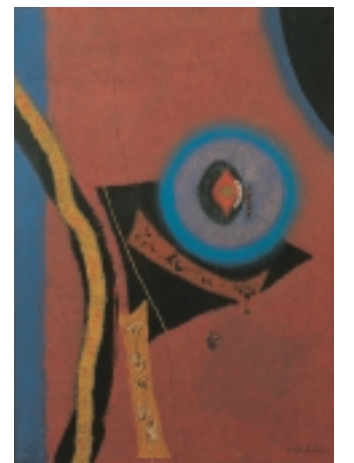
Many works of art from the SFCA's Art in Public Places Collection are on display in and around State buildings in the Capital and Civic districts. In every direction from the Hawai'i State Art Museum, the Capital, Civic, Downtown, and Nu'uano-Bethel-Pauahi (Chinatown) Districts contain historic, cultural, and artistic sites that are open to the public. Here are additional sites you should explore. Call or ask at the Hawai'i State Art Museum information desk for hours of operation, schedules, and events at these sites.

Kimberlin Blackburn, *In the Taro Patch*, 1999, acrylic and beads on wood



Historical and Cultural Points of Interest

- 1 **Hawai'i State Art Museum**
Phone: (808) 586-0900
- 2 **Hawai'i State Capitol, Governor's Office of Information, Capitol Tours**
Phone: (808) 586-0178
- 3 **Washington Place Foundation**
Phone: (808) 536-8040
- 4 **St. Andrew's Cathedral**
Phone: (808) 524-2822
- 5 **Laniākea Center, YWCA of O'ahu**
Phone: (808) 538-7061
- 6 **'Iolani Palace**
Phone: (808) 522-0832
- 7 **Hawai'i State Library**
Phone: (808) 586-3500
- 8 **Judiciary History Center - Ali'iolani Hale**
Phone: (808) 539-4999
- 9 **Kawaiaha'o Church**
Phone: (808) 522-1333
- 10 **Mission Houses Museum**
Phone: (808) 531-0481
- 11 **Honolulu Hale, Mayor's Office on Culture and the Arts**
Phone: (808) 527-5666 or (808) 523-4674
- 12 **Honolulu Police Department's Law Enforcement Museum**
Phone: (808) 529-3351 or (808) 529-3352
- 13 **Honolulu Academy of Arts**
Phone: (808) 532-8700
- 14 **Academy Art Center at Linekona**
Phone: (808) 532-8741
- 15 **EXTENDED CULTURAL PARTNER**
Neal S. Blaisdell Center Concert Hall
Home of:
Hawai'i Opera Theatre
Box Office: (808) 596-7858
Administration: (808) 59-OPERA (596-7372)
Honolulu Symphony
Ticket office: (808) 538-8863 or (808) 792-2000
Administration: (808) 524-0815
- 16 **Hawai'i Maritime Center**
Phone: (808) 536-6373 or (808) 523-6151
- 17 **The Contemporary Museum at First Hawaiian Center**
Phone: (808) 526-0232
- 18 **Kumu Kahua Theatre**
Phone: (808) 536-4222
- 19 **Hawai'i Theatre Centre**
Phone: (808) 528-5535
- 20 **The ARTS at Mark's Garage**
Phone: (808) 521-2903



Tetsuo Ochikubo, *Infinity Manifested*, 1964, acrylic on canvas



Toshiko Takaezu, *Shiro Momo*,
1992, porcelain

Harue McVay, *Cuttlepus 2*,
2001, ceramic

FREE PUBLIC PROGRAMS EVERY MONTH!

First Friday

Concerts & Performances
Every First Friday
5:00 pm - 9:00 pm



Second Saturday

Family Art Activities
11:00 am - 3:00 pm



Museum visitors of all ages learn by creating their own artwork. Professional teaching artists demonstrate techniques and provide guidance.

Art Lunch

Lecture Series
Last Tuesday of Each Month
12:00 pm - 1:00 pm

Featured presenters are notable artists and cultural practitioners. Lectures are at noon on the last Tuesday of each month.



The Exploration Station

in Diamond Head Gallery

Visitors learn about art through interactive exhibits and hands-on experiences.



Michael Tom, *Crossing*,
1982, red brass, copper and bamboo

Please Kōkua

The Hawai'i State Art Museum is the "People's Museum" and belongs to everyone. Please respect those around you and let them enjoy their own museum experience.

Please join us in preserving the artwork for future generations. Artwork can be damaged by even the slightest contact. Please refrain from touching the art.

Backpacks, Large Bags/Items, and Umbrellas

For safety reasons, all items larger than 11 x 15 inches must be checked in and held at the Security Desk.

Smoking & Food

Smoking is prohibited throughout State buildings. No food or drink is allowed in the museum galleries.

Cellular Phones

Use of cellular phones and pagers is not permitted in the galleries.

Pets

No animals are permitted in the museum with the exception of trained assistance animals.

Photography

Flash photography is not permitted. Hand-held still and video photography in existing light is allowed in the galleries for private, noncommercial, or educational use. Photography is not permitted in special exhibitions or areas designated as "No photography." For press and other special photography, please contact the Art in Public Places Program. No photographs taken in the Museum may be reproduced, distributed, or sold without permission.

Downtown

@ the HiSAM

Hours:

Monday - Friday

7:00 am - 2:00 pm

Saturday

11:00 am - 2:00 pm

Reservations 536-5900



Explore