

Omega Phi Alpha National Service Sorority

The Chevron

September 1980

Volume 13 Number 1

Convention '80--a huge success

Aggieland, College Station, Texas, a beautiful city and a terrific place to have a convention. A time when new friends were made and the sisterhood became more unified.

The sisters of Delta had worked hard and long to make this the super convention that it was. Surrounded by their southern hospitality delegates from Beta, Delta, Epsilon, Kappa and the Alumni Administration had a fun and productive four days.

The picnics on Mt. Aggie, pizza from Pasta's, Mexican food from Zarapes and the wonderful banquet on Friday night supplied the delegates with out-

standing strength to face those long business meetings and to enjoy the night life with visits to the Hall of Fame, Dixie Chicken, and the Holiday Inn (for the older generation.)

Along with learning how to kick dance and some of the traditions of Texas A&M the delegates seemed to draw a special unity as they sat around singing and writing songs. They shared new ideas and expanded on old ones. Overall it was four days of memories and everyone went home with an added excitement for the coming year.

The election of officers was held on the second business day. The results

are: President - Leslie Houston - Alpha Alum (this is Leslie's second term); Vice President - Margie Gronski - Beta Alum and last year's Executive Secretary; Executive Secretary - Christy Pask - Kappa Alum; Treasurer - Bonnie Edmund - Delta Alum and last year's Historian; and Publications Secretary - Rosa Derry - Epsilon Active.

Rounding out the slate of officers are: Alumni Administrator - Suzan Burnett - Epsilon Alum; Expansions Director - Cindy Viktorin - Delta Alum and last year's Publication Secretary; and Historian Sandi Kindig - Alpha Alum and last year's Expansions Director.

Jan Sedory presented Terizan Award

Several years ago it was decided to initiate an award that could be given to an individual, group, or chapter that had made an outstanding achievement or a significant contribution to the sorority; the award was named after Susan Terzian--a past national president who was killed during her term of office.

This year the award was presented for only the second time in its history, to Jan Schnack Sedory.

Jan has been involved with O Phi A since its beginnings. She has served as an officer in her local chapter (Pledgemaster-Alpha chapter) and on the national level she has been Vice President, Alumni Administrator, and an unprecedented four terms as National President. Jan was involved in the early organization of our sorority, helping to write and rewrite the constitution, defining national programs and services, promoting ex-

pansions and growth of the sorority.

Jan continues to stay active and gives of her time and knowledge by serving as a member of the Alumni Board of Directors. She has made significant contributions to this sorority for nearly 15 years. She's been actively involved since she joined and has had a hand in shaping our organization and guiding it to where we are today.

CONGRATULATIONS JAN--AND THANKS FOR ALL YOU'VE DONE!

President excited about coming year

Dear Sisters,

We certainly welcomed in the 80's with a bang and convention '80 was no exception. Other than the Texas heat(!), convention was a big success and seemed to be one exciting moment after another. After my first year at chairing this wonderful yearly get-together, I came home with lots of great memories and want to say thank-you to all the delegates, participants, and especially the convention committee, for being so supportive, co-operative, and enjoyable to work with.

We had so many new things to share this summer it was a little mind boggling. New posters, new stationery, ideas on pepping up meetings, making pledging fun, a "surprise" vote on dues, unveiling the new handbook, the President's Manual, the Chapter Excel-

lence Program, plans for a grant study, first night introductions, last night initiations--and lots of late night work and fun sessions. WHAT A WEEK!!

And what a year this next one promises to be! Although many of you may feel the pinch of a \$5 dues increase, I'm sure you'll have to agree that considering the rising inflation, you're still getting a lot for your money. And I want us to continue providing better and better support and services to the chapters. In addition to the new materials unveiled at convention, we've already made plans to print notecards and invitations to join for chapter use, and will be initiating an individual achievement award for members that give above average hours of service to others.

Our top priority this year however is expansions,

not only of new chapters but also membership within chapters. For without healthy and growing membership we can't exist! I will be up to each and everyone of us--active, inactive, alumnae--to promote our sorority and recruit new members.

The President's Project for this year is "Hand Across the Ages---Working With the Elderly". Growing old is something we all have to do, and I feel there is much our sorority can do to help the elderly and perhaps improve conditions for the future.

We have an exciting decade to look forward to. We hope we continue to meet the next years with increased strength and involvement. Remember--Omega Phi Alpha is YCU. Don't let us down.

In service
and sisterhood
Leslie Houston

Informally speaking

Dear Sisters,

My deepest apologies for this issue being so very late. Everyone told me that the first issue would be the hardest and they were right. It seemed as though Murphy's Law took control right from the beginning.

Considering that this is my first contact with many of you please allow me to tell you a little about myself.

I am a senior journalism major at Tennessee Tech and an active member of Epsilon chapter where I am the 1st Vice President.

the fact that I live on campus, I cannot accept any collect calls, but you can call Suzan Burnett collect and she will give me a message or I will return the call.

I will continue to use the "freebie" ads so please continue to send them. Also there will be no charge for any pictures that you want to appear in the Chevron.

I am looking forward to a productive year for O Phi A and to working with each chapter.

O Phi A Love,

The CHEVRON is the National publication of Omega-Phi Alpha Service Sorority.

Editor: Rosa Derry
P.O. Box 6209
Tenn. Tech. Univ.
Cookeville, TN 38501

Publication information:

Issue	Postmark Deadline	Published
1	August 15	September
2	October 1	November
3	December 1	January
4	February 1	March
5	April 1	May

Information on pre-paid personal ads:
2" x 1" No charge

(publication subject to available space)	
1/8 page	\$ 2.50
1/4 page	\$ 5.00
1/2 page	\$10.00
1 page	\$20.00

Please adhere to the above deadlines and charges so the CHEVRON will be published on schedule. The National publication welcomes the written comment of any member or affiliate of Omega Phi Alpha National Service Sorority.

“Hands Across the Ages... Working With the Elderly ”

The President's Project for the coming year is "Hands Across the Ages--Working With the Elderly." Growing old is often treated as a handicap or a sickness in this country. However, it is a condition that we all will face. A great many senior citizens have lots of vigor and knowledge and often just need a place to share it. And those that are weak or infirm very often don't get the help and support they need.

In this, the International Year of the Family, what better way to give service than by promoting the rights and concerns of our nation's elderly. We can reach our hands of service across the so called "generation gap" to work with and for the senior citizens of our communities.

In planning projects for this year, try to stay away from the "band-aid" or "Lady Bountiful" approaches. Singing Christmas

carols or having Halloween parties are certainly enjoyed by all but don't do anything to treat problems and often simply puts a "band-aid" over an ugly wound. Likewise the "Aren't the poor and pathetic" (Lady Bountiful) approach just relegates the elderly into being second class citizens. Surely we can do more.

Talk to old people. Find out what they want, what they need, and what they can share. You don't have to start a nursing home riot, but listed below are some of the ways that our sorority can help:

- Campaign for legislation for better benefits for the elderly. Find out what's already available in your city or state. Are there any changes already proposed?

- Find ways to get senior citizens more active and useful. Set up a job sharing pool where they can trade off services to each other. For example, a woman might bake bread for some-

one that would keep her lawn mowed.

- Find ways to better the living conditions of those that need it--clean house, do the shopping, cook, etc.
- Volunteer for (or initiate your own programs if none exist in your community) a Meals on Wheels, or one of the Phone a Friend programs. Check with local social service agencies or senior citizen centers to find out what is available or what needs to be done.
- "Adopt" some "grandparents"--find some senior citizens that you can get to know well--especially those with little or no family. Invite them to chapter meetings, projects, get-togethers. . .Celebrate holidays together...

You'll probably find other ideas for things to do in your own communities. Be a little creative and work on problems, not just symptoms. Remember you'll go down the same path someday. Maybe you can do something to make it better when you get there.

NSC gets into full swing

The National Service Council will swing into action this year, with a chance for council members to contribute input on national decisions.

Margie Gronski will be consulting with chapter service chairpersons, who comprise the council, about national service issues

ual Achievement Award for any sister who completes 100 service hours or more in a school year, and (2) a clarification of and an uniform focus for the National Service Award guidelines.

This program will also help all service chairpersons as they plan ahead for

grams. A packet of service project resource ideas will be sent to them sometime in November. It will feature project ideas for the small, medium, and large chapters, ways to organize projects that have been tried-and-true successes, and suggestions on where to acquire resources for the

Expansions-"A Thought to Grow On"

Omega Phi Alpha has not had the privilege of welcoming a new chapter into the sisterhood since 1978. In previous years focus on the National level has been directed to strengthening internal communications, but this year the #1 goal and objective of OPA is to increase expansions efforts to form new colonies. Who? How? When? and above all, Where?

Who? The answer is not me or you, but us, polling our resources and working together to spread our principles on other college campuses-National officers, active sisters, and yes, even pledges.

How? By formulating a plan that you feel will work in your geographical area. Stay in close contact with the National Expansions Director, Cindy Viktorin, and she'll direct

and guide your actions. Involve your actives as well as your pledges. This must be a group effort!

When? Now! Why not make plans now to start action during the months of October and November? Could we possibly have a colony by Mid-Year in January? What a wonderful thought!

Where? Preferably at one of the following:

#1-at a university near yours.

#2-at a university where you know someone who could organize a group.

#3-at a university where an alumnae sister from your chapter has transferred.

You are only limited to one important restraint when considering possible universities to concentrate on-limit your targets to four-year schools. It has been the experience of the

sorority (Theta and Eta are good examples) that two

year schools "come and go with their level of participation in the sorority. In essence, chapters never really stabilize because almost as soon as a sister becomes active, it's time to graduate or transfer.

To get us "growing" in the right direction, each National officer has agreed to hold an organizational meeting at a university before January 1. Local chapters, will you accept the challenge of doing the same? Local liaisons, is it feasible?

The National Expansions Director will mail out approximately 100 brochures to colleges and universities in the Southwest and follow up with phone calls (Imagine the bill...imagine the possible colonies!).

And hey alums! We'll be calling on you for support in more ways than one

(cont'd on page 8)

\$10 per year

Delegates vote \$5 increase in dues

In a resounding and somewhat surprising vote, the delegates at this year's convention voted to increase by \$5 per payment (\$10 per year). After lengthy discussions and workshops on the sorority's financial situation, the following points were brought out:

1.-National officers stayed well within their budgetary limits for 1979-80, but since income was not as much as was needed, we will

reserves to cover costs for the rest of the year.

2.-A national fund raising project might not be agreeable or even feasible for all chapters and is expensive in both time and money

3.-A larger dues increase at this time would eliminate the need to make adjustments for the next few years.

The vote on the \$10 increase was unanimous by all delegates present. With the extra financial backing, the sorority can continue to provide high quality

continue to grow successfully.

Bonnie Edmund, the 1980 national treasurer, will be sending the chapters a letter about the payment of dues and pledge fees. This letter will also include a sample membership roster and an explanation of how to complete it.

The deadline for the payment of dues for the fall is November 1st. Be sure to write in advance if you need additional roster forms. Both the roster and the dues should be mailed to reach Bonnie by the

Alumni on the local level

Dear Sisters,

Hope each of you has started the year off right with lots of exciting things planned. Are you wondering how the start of school has anything to do with my office as Alumni Administrator? Well, you see, by the end of the year there will be somewhere in the neighborhood of one hundred new alums. As of this writing in late August there are only around one hundred and fifty active alums! Pretty sad when you think that we have been an active organization for about 25 years! By the end of the year I hope to have all of the correct for those graduating sisters plus current addresses of Alums from each chapter. Since every chapter may not have the office of alumni secretary, I'm asking that each chapter President be responsible for sending a current list of their alums to me as soon as possible.

You may wonder why its so important to keep in touch with your local chapter and national organization of O Phi A--I'm glad you asked! I really hope

that many of you feel as I do when I say that as I took those vows of giving of myself in friendship, leadership, and service, I did not mean that I would develop those areas of my life only while I was in college! The many sisters I have made through O Phi A have taught me to be a friend, a leader and to be of service. As Alums not only do we need to continuously support our home chapter, but we owe it to ourselves and our community to become active as leaders friend and continue our service to others.

As you can tell already, another goal I've set is to organize new Alum Chapters. We now have three alum chapters--two in Tennessee and one in Conn. Not bad at all but we can do better. How about you girls in Tx., Tenn., Ohio, N.C., etc.? Now why don't some of you that have been wanting to organize an alum chapter drop me a line. I'm trying to get a huge map to pinpoint where there are groups of sisters. By the end of the year we should have more alums to support you collegiate sisters.

Also remember that positions on the Alumni Board will be opening soon. Sound interesting? Just remember unless you let the board members or myself know about these wonderful and exciting ideas you want us to do, we'll never know about them! Think there's nothing you can do since you've been out of touch for who-knows-how-long and you think you live in the middle of nowhere? Well for starters surely some of the sisters you were close to have become "Mrs.", mothers have gotten advanced degrees, moved and maybe forgot to let us know of their new address, etc.. Come on girls, you know more than your letting on!!!

If you want to know more exciting plans just drop me a line or call anytime. I'm working for you until Convention '81 so put me to work! I hope each of you at both the collegiate and alum levels will become involved in making the Alum Administrator a successful office this year.

Through our Bonds of Friendship, Leadership, and Service,
Suzan Burnett

Gold, silver and bronze awards

With seals of gold, silver and bronze, the Chapter Excellence Program is launched this year to recognize outstanding achievement within chapters.

CEP applications and instructions are being distributed to all chapter officers this fall and chapters may begin working on the program right away. This program features 11 areas of endeavor from

communication to the national projects.

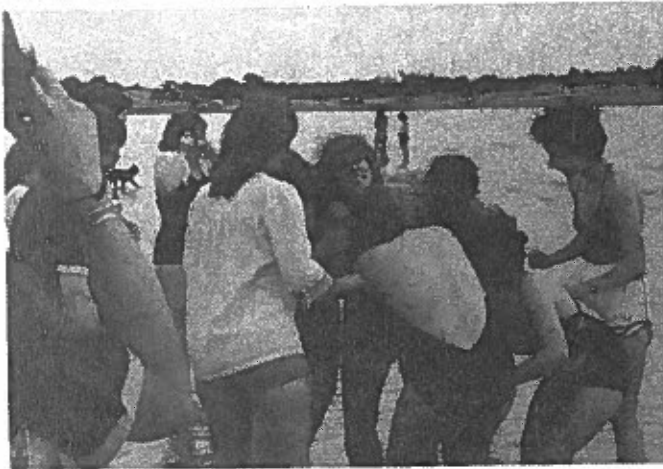
CEP is a series of requirements encouraging high standards in areas such as service, leadership, friendship, expansions, conventions, and others. The chapters will have an opportunity to receive national recognition for their achievements.

The CEP award will be a large certificate on which

can be affixed seals for each year the chapter receives the recognition. Chapters do not compete against each other, but against a set of standards, therefore all chapters have an opportunity to be awarded either the gold, silver or bronze seals each year. The first presentation of these awards will be at Convention '80.

(cont'd on page 12)

MEMORIES OF



"You can't do this to me -
I'm the National President!"

ALUMNI
NANCY PAMELA
CATHI
PAM
TEXAS A & M

KAPPA
SUE
GRETCHEN

Delta
C
Pre
BETSY

BECKY

CONE

DELTA
KATHY
JOYCE
ZARAPES
MT. AGGIE

HALL OF FAME
RUDDER TOWER
MSC



Beta takes a clean sweep
in all awards.

A-1 LOUNGE



THE 1980-81 EXECUTIVE BOARD

(from left to right) Cindy
Viktorin, Bonnie Edmund,
Rosa Derry, Sandi Kindig,
Margie Gronski, and Leslie
Houston. Not pictured are
Suzan Burnett and Christie
Pask.

EX-BOARD
LINDA SANDI BONNIE
CINDY MARGIE
LESLIE

COLLEGE STATION



Joining together in song...
a favorite "thing to do" at
conventions.

SUSAN

EPSILON
TERESA
ROSA

LAKE SOMERVILLE

DIXIE CHICKEN



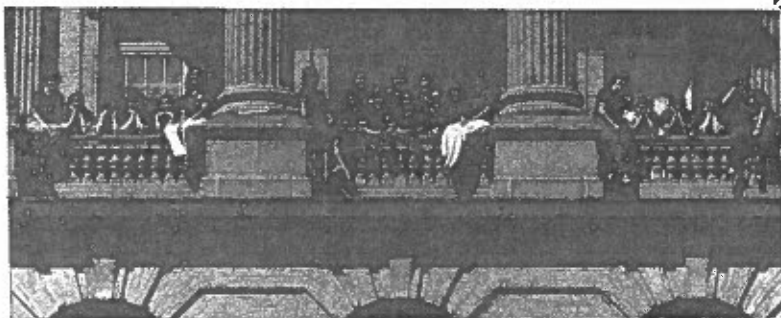
"...And we LOVE you!"

PASTA'S PIZZA

BETA
JEAN
WENDY



First year "initiations" for
the new delegates.



The delegates pause from their busy
schedule for a picture of memories.

CONVENTION '80

ster
its
Omega
hi Alpha
10 '80

Delta Chapter News

Howdy from Delta Chapter! We've had a great summer and now we're looking forward to a great year for OPA. We have lots of plans brewing for the fall semester, and we want to let you in on a few of them.

First of all, we elected our new officers last spring. They are:

President-Betsy Nussbaum
1st V.P.-Susan Wallace
2nd V.P.-Rita Jo Brown
Secretary-Mary Stallings
Treasurer-Janna Fain
Pledge Master-Diane Jungman
Congratulations to these girls! Also, we recently got a new faculty advisor. She is Dr. Gwen Ellisalde and is in Veterinary Microbiology.

School starts in Aggie-land on September 1. On the following Saturday, September 6, we will partici-

pate in MSC Open House on campus. Open House is held annually at A&M to introduce campus organizations to new students and gives us a good opportunity to make ourselves known.

Rush will be the next week on September 11, and our first pledge meeting will follow on September 17. We're hoping for an enthusiastic and hardworking pledge class for this fall.

Three officers from OPA will be attending the MSC Fall Leadership Conference. Betsy Nussbaum, Rita Jo Brown, and Diane Jungman will be going to a camp in Athens for the weekend conference.

We want to say thanks to all of you who attended Convention '80 and helped to make it such a success. We had fun and hope you did too.

In closing, we really are planning for a great semester here at Delta Chapter. We'd really love to hear from ya'll and hope you will participate in the pen pal program and let us know about your plans for the fall.

IS IT TRUE THAT OUR
NATIONAL PRESIDENT WILL BE
HEARING WEDDING BELLS ON
NOVEMBER 22. HOW ABOUT IT
LESLIE???

★ Expansions growing

(cont'd from page 4)

Could you go with you chapter on visits to colleges? (Think you could spare a day from work?) Plus, we'll all need a lot of encouragement, especially at chapter meetings (Tell us you know we can do it!)

As of late August, the National Expansions Director reported that Epsilon, with help from their two alumnae chapters, will focus efforts on Middle Tennessee State University. According to Rosa Derry, Epsilon sisters are having problems getting permission to advertize or recruit on campus because there wasn't an existing interested group. They found a pos-

sister's sister is a student at MTSU and is interested in the sorority. She has offered to try and get a group together on campus. Kellie Arnhart, Epsilon's national liaison, is organizing the effort. Epsilon is working on a slide presentation to show to the prospective colony.

The slide presentation will give a well rounded view of the sorority. It will contain information from pledging to becoming an alumnae. This presentation will show the Epsilon sisters at work participating in the areas of friendship, leadership and service.

Thanks to
Betsy Nussbaum
and her
Convention
Committee
and
Delta Chapter
for a
FANTASTIC
Convention
The Executive Board



A new year...

A new beginning...

★
Becky Goff,
Thanks for the joke book.
I love it. I'll write
soon, I've got lots of
things to tell you. Thanks
for the pictures.

Rosa

★
Leslie,
The 52 minute call, CT to
CA cost \$8.38. Well, it
could have been worse.
Margie

★
Wendy M.,
Only 10 months till
Bridgeport! Can't wait!
Good luck with everything
this year!

Cindy V.

★
★
Congratulations Beta on
all the awards. What a
sweep!

Leslie

★
Congratulations Rosa and
Suzan. We are proud of
you.
Epsilon

★
Teresa and Jean,
You'll be glad to know
that the bruises on my
arms have finally healed!
Leslie

★
Delta,
Thanks for all the fun.
Convention '80 was fan-
tastic.

Rosa

★
PJ,
Ophia's waiting...
MG

★
Epsilon Sisters,
Good luck this year girls
We're here if you need us
Cookeville and
Nashville Alumni

★
Hey Leslie,
How's the water?
Teresa

★
Jeannie H. P.,
Congratulations! Sure am
glad to have you back in
town.

Suzan

Betsy,
Thanks for a smooth run-
ning convention. You done
good!
L.H.

Cindy V.,
Thanks for all your help.
Let's keep our fingers
crossed for MTSU.

Rosa

Epsilon,
Best of luck for a
successful year-REMEMBER
I'LL BE WATCHING
Ophellia

Jeannie,
Congratulations! Good to
have you close by.
Epsilon

Pam Faulkner,
Good to see you again!
Don't be such a stranger-
this sorority still needs
you!!
Leslie

1980 Convention Delegates,
Remember to send in the
money for the posters and
stationery you took home
by October 1.

Rosa

Gretchen,
Thanks for sending the
posters.
Rosa

Nancy A.,
Thank-you so much for the
Dr. Scholl's!
Margie

Kellie,
Thanks for doing the art
work.

Rosa

★

Beta,
The Bridgeport Bunch has
done it again! Congratul-
ations on a job well done
especially in earning the
Nat'l Service Award. It
was a thrill to present
it to you. And now . . .
here comes Convention '81!
Margie

★

Good luck to the 1980-81
National officers.
Epsilon

★

SRB,
Looking forward to work-
ing on PuPa stuff with
you.
RLD

★

Epsilon,
Looking forward to a
great year. Thanks for
all your support and care.
Lots of love,
Teresa

★

Beta,
Congrats on winning it
all!
CV

★

Ann DeMatteo,
B.A. Sounds great! Had a
wonderful time at the
celebration party.
Margie

★

★

Three cheers for Melissa
McDonald! Yea, Yea Yea!

★

ATTENTION ALL CHAPTERS,
The deadline for the next
Chevron is the week of
Oct. 1-Oct. 8. Please get
your chapter news in on
time.

Rosa

★

Gretchen and Susan,
Thanks again for the ride
to the airport.

Leslie

★

Terry B.,
Thanks for always being
there when I need you.
MTSU here we come!!!

SRB

★

Delta,
Convention '80 was GREAT!
Thanks for the Southern
hospitality.

Teresa

★

Lyndy Dawson,
I miss your collect
phone calls. How's Wash-
burn? Let me know.
Cindy V.

★

★

SK,
We finally decided. The
sunset will go in the
bedroom, Thanks again.
CV

★

Christy,
I was only off by a zero!
Hope you had fun visiting
home while all the con-
fusion reigned.
Margie

★

Sue,
Still awaiting the arrival
of Kappa to Cookeville!
Come on down.
Teresa

★

Teresa H.,
Congratulations! Keep in
touch.
Epsilon

★

SK,
What motel in Nashville?
Rosa

★

The "Close But No Cigar"
Award goes to Zetachapter
delegates. They got as
far as Houston but
couldn't get to College
Station!

★

Chapter News (cont'd)

Epsilon

Joyous laughter, smiling faces and the aroma of charcoaled hamburgers lingering in the air, is it the county fair? Well, almost.. it's however Epsilon chapter's summer picnic. Despite the unexpected rain, we had a fantastic time. We were blessed with the presence of sisters, alumni, advisors, boyfriends and especially our honorary sister Renee. Yes, summer has been exciting for us. Several sisters have braved summer school and an even greater experience, marriage!

We are looking forward to a busy year with our new officers:

President-Teresa Spencer
1st V.P.-Rosa Derry
2nd V.P.-Donise Church
Rec. Sec.-Jenny Roberts
Treasurer-Karen Smith
Corr. Sec.-Becky Roberson
Alum. Sec.-Alison Farrow
Nat'l L.-Kellie Arnhart
Chapl.-Terrie Bess
Historian-Connie Edwards
Parlin.-Lynn Bradford
Fall quarter begining
Sept. 18th with our first meeting being the 21st and pledging gets underway the week of the 28th.

So it's off to a busy start!

O Phi A Love,
Epsilon

Nashville Alumni

A big HELLO from Nashville! We've had a great summer and have been busy with projects and celebrations. The Yard and Craft Sale raised about \$400 for our scholarship fund, and although temperatures soared into the hundreds, all alums and customers weathered the heat just fine.

Our Labor Day included a visit to the Nashville M Telethon where we answered phones and helped with pledges.

We celebrated our first anniversary on August 13 at a joint picnic with the Cookeville alumni. This past year gave us many memorable experiences, and we look forward to the coming year with more excitement to build friendships, develop leadership, and render service.

CREATIVITY CORNER SCHEDULE

Issue 2 Zeta and Kappa
Issue 3 Delta and Epsilon
Issue 4 Alpha and Iota
Issue 5 Eta and Beta

IMPORTANT ADDRESSES

NATIONAL EXECUTIVE BOARD

President
Larlie Houston
6675-H Palm Ave.
Riverside, Ca 92506
714-781-9869

Vice President
Margie Gronski
137 Jordan St.
New Britain, Ct. 06053
203-229-7577

Secretary
Christie Pask
12479 Lee Rd.
Albion, NY 14411
716-758-0784 (until End of Sept.)

Treasurer
Bonnie Sue Edmund
2018A Secretariat St.
Longview, TX 75604
214-759-8336

Publications Secretary
Rosa Derry
P.O. Box 6209 Tenn Tech
Cookeville, TN 38501
615-528-8911

Expansions Director
Cindy Viktorin
10507 Westedge
SugarLand, TX 77478
713-491-3412

Alumni Administrator
Susan Burnett
1801 Lee Ave #20
Cookeville, TN 38501
615-528-7772

Historian
Sandra Kindig
1533 West Third Ave.
Columbus, Ohio 43212
614-488-9279

as of 9/80

CHAPTERS

Alpha ✓
Box 48
University Hall
Bowling Green State U.
Bowling Green, Ohio 43403
President--April Cherault

Beta ✓
University of Bridgeport
Student Center Activities Office
244 University Ave.
Bridgeport, CT 06602
President--Georgianna Scovill

Delta ✓
Texas A & M University
Box 5144
College Station, TX 77841 (new zip)
President--Betsy Nussbaum

Epsilon ✓
Box 5265
Tennessee Tech U.
Cookeville, TN 38501
President -- Teresa Spencer

Iota
1315 Student Services
Western Michigan U.
Kalamazoo, MI 49001
President--Donise & Mary Beth Christensen

Kappa ✓
Box 139
Capital University
Columbus, Ohio 43209
President--Becky Stellhorn

Zeta ✓
C/O Cindy Brazeal
2010 E. Fifth Space 27
Plainview, TX 79072
President--Cindy Brazeal

Eta
C/O Susan Crain
Director of Student Development
Amarillo College
Box 447
Amarillo, TX 79109
President--

★ CEP first year

(cont'd from page 5)

Since this is the first year of implementing the CEP, the program itself may be less than excellent! Therefore, if there are any difficulties in completing the application, or if you have any suggestions, questions, or gripes send them to Margie Gronski and the program will be adjusted accordingly.