



North American Investors and Developers in Real Estate

A NEW BEGINNING

2009 USA
GRI

NEW YORK
26 FEBRUARY

THE GRI A GLOBAL CLUB 2009

The GRI is a global club of senior investors, developers, lenders and hotel companies active across three continents. It runs its activities through a series of annual meetings focused on different regions of the globe. If building close relationships with the driving elite of the real estate industry at the most senior levels can be useful, we welcome you to join us.

www.globalrealestate.org
info@globalrealestate.org
Tel (011 from USA) +44.20 8492 2629



**GRI EUROPE
CHAIRMEN'S RETREAT 2009**
St Moritz, January 15-18



TURKEY GRI 2009
Istanbul, 20 January



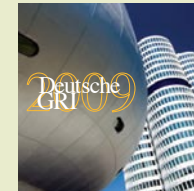
USA GRI 2009
New York, 26 February



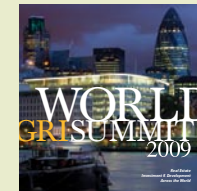
ASIA GRI 2009
Singapore, 4-5 March



MIDDLE EAST GRI 2009
Dubai, 22-23 April



DEUTSCHE GRI 2009
Frankfurt, 27-28 April



GRI WORLD SUMMIT 2009
London, 5-6 May



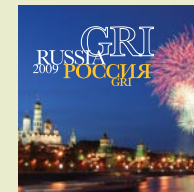
CHINA GRI 2009
Shanghai, 2-3 June



GRI EUROPE SUMMIT 2009
Paris, 14-15 September



INDIA GRI 2009
Mumbai, 23-24 September



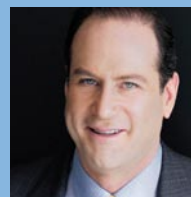
RUSSIA GRI 2009
Moscow, 30 September - 1 October



**GRI MIDDLE EAST
CHAIRMEN'S RETREAT 2009**
16-17 November



NEW EUROPE GRI 2009
Warsaw, 23-24 November



PHILIP BLUMBERG
BLUMBERG CAPITAL PARTNERS



ANTHONY BREAUTL
OREGON STATE RETIREMENT SYSTEM



CIA BUCKLEY
DUNE CAPITAL MANAGEMENT



MIKE CROFT
COMMONWEALTH PARTNERS



RICHARD DANSEREAU
CADIM



MIKE FASCITELLI
VORNIADO



DENNIS FRIEDRICH
BROOKFIELD PROPERTIES



SABINE GAEDKE STENER
GAEDKE GROUP



GLORIA GIL
UNIVERSITY OF CALIFORNIA REGENTS



Henri Alster

No speeches. No presentations. But plenty of speakers. You. Everybody.

On 26 February , the GRI will bring together leading players in US and international real estate for a concentrated day of over 25 discussions addressing the most pressing issues driving the business today.

As with all GRI events, there will be no speeches, no panels, no presentations. Only discussions where everybody participates equally, whether or not Discussion (co-)Chair or regular delegate.

GRI meetings do not aim to gather the greatest number of participants, only the most senior.

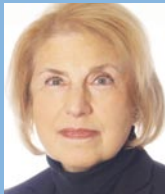
If finding new business partners or connecting with peers on topics of mutual interest is useful to you, we would be delighted to welcome you.

Ongoing updates at www.globalrealestate.org

Henri Alster
Chairman, GRI - Global Real Estate Institute



DENNIS IRVIN
ROCKEFELLER GROUP



KATHY JASSEM
STATE OF NJ TREASURY



CHAIM KATZMAN
GAZIT GROUP USA



RICK KLEEMAN
WHEELOCK STREET CAPITAL



HERBERT KOLBEN
UNION LABOR LIFE



TED LEARY
CROSSWATER REALTY ADVISORS



STEVE LEBLANC
TEXAS TEACHERS RETIREMENT SYSTEM



BRIAN LIKHALA
MICHIGAN RETIREMENT SYSTEM



JAY MANTZ
MORGAN STANLEY

TIMETABLE



TIMETABLE



Wednesday 25 February

19h00 - 21h30 GRI Board Dinner
(By invitation only - reserved for GRI Members, Sponsors and USA GRI Discussion (co-) Chairs.)

Thursday 26 February

07h45 onwards Check-in
08h30 - 09h45 Keynote
10h00 - 13h15 USA GRI Program
13h15 - 14h15 Lunch
14h15 - 17h00 USA GRI Program
17h00 - 18h00 Closing Drinks

Dress code: Business Casual, no tie required.



BEN MARCIANO
EUROHYPO



DAVID MAZUJIAN
ING REAL ESTATE FINANCE



CAROLINE MCBRIDE
FORUM PARTNERS



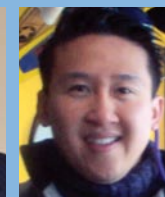
GARY MENDELL
HEI HOTELS



CONNIE MOORE
BRE PROPERTIES



LEE NEIBART
APOLLO



TIM NGUYEN
UNIVERSITY OF CONNECTICUT ENDOWMENT



SAM PLIMPTON
BAUPOST



MICHAEL PRALLE
JER

KEYNOTE

Thursday 26 February 08h30 - 09h45

BRAVE NEW WORLD

*how will it look like when we get there?
how far the journey?*



MICKEY LEVY
chief economist
BANK OF AMERICA
usa



STEPHEN QUAZZO
TRANSWESTERN INVESTMENT



JEFFREY QUICKSILVER
WALTON STREET CAPITAL



PHILIP RESTIFO
HAVELAND PROPERTIES



RUIFEN XU
DOW CORPORATE PENSION



GAYLE STARR
AMB PROPERTY



BARRY STERNLICHT
STARWOOD CAPITAL GLOBAL



FRANK SURYAN
LYON APARTMENT COMPANIES



STEVE VAN
PRISM HOTELS

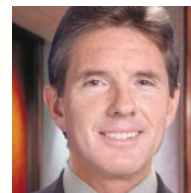


WIEBKE WANNER-BORCHARDT
TAA-CREF

PLEASE NOTE:
GROUP
DISCUSSIONS
REQUIRE
PRIOR SIGN-UP
ON REGISTRATION
FORM

US DISTRESS INVESTING *where, when and what?*

MICHAEL PRALLE
president & coo
JE ROBERT COMPANIES usa



Michael Pralle

LISA AMZALLAG
director
LAZARD FRÈRES & CO. usa



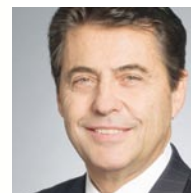
Lisa Amzallag

CATHLEEN CROWLEY-PISCITELL
executive vice president
CIT COMMERCIAL
REAL ESTATE usa



Cathleen Crowley-Piscitell

JAY HENRY
managing member
TRIGATE CAPITAL usa



Herbert Kolben

HERBERT KOLBEN
chief re investment officer
UNION LABOR LIFE usa



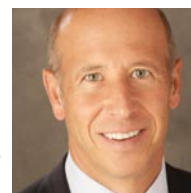
Jeffrey Quicksilver

JEFFREY QUICKSILVER
managing principal
WALTON STREET CAPITAL usa



Chip Rodgers

CHIP RODGERS
senior vice president
REAL ESTATE ROUNDTABLE usa



Barry Sternlicht

BARRY STERNLICHT
chairman & ceo
STARWOOD CAPITAL GLOBAL
usa

All material throughout
this brochure is subject
to change without notice.
Ongoing updates at
www.globalrealestate.org

The mission of the Discussion Chairs
is to make everybody talk...

Discussions

US PENSIONS & TAX-EXEMPTS IN GLOBAL REAL ESTATE: LPs MEETING GPs
do strategies need adjusting?

RUIFEN XU
 global real estate portfolio investment manager
DOW CORPORATE PENSION FUND usa



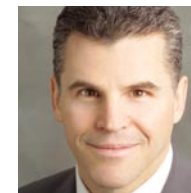
Ruifen Xu

LIJIAN CHEN
 managing director
UBS/GEMDALE CHINA FUND usa



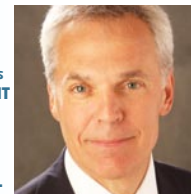
Lijian Chen

BRUCE COHEN
 chief executive officer
WRIGHTWOOD CAPITAL usa



Bruce Cohen

VICTOR DEL PIZZO
 senior manager, re investments
ALCATEL-LUCENT INVESTMENT MANAGEMENT usa



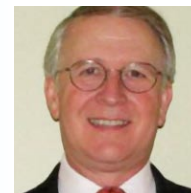
Barden Gale

BARDEN GALE
 vice chair, real estate
STARWOOD CAPITAL GLOBAL usa



Nimesh Grover

JAMES GOULDING
 managing partner
LIMETREE CAPITAL ASIA PARTNERS usa



Phillip Wiggins

NIMESH GROVER
 executive director
UBS/K RAHEJA CORP INDIA FUND india



Eddie Wong

BRUNO LASKOWSKY
 ceo
CYRELA COMMERCIAL PROPERTIES brazil

BRIAN LIIKALA
 administrator, mortgage and real estate division
MICHIGAN RETIREMENT SYSTEM usa

PHILLIP WIGGINS
 president
STRATFORD LAND FUND usa

EDDIE WONG
 head
WINNINGTON CAPITAL hong kong



Brian Liikala



... getting everybody to share,
 connect and make friends

Discussions

FUND AND ASSET RESTRUCTURING
is it workout time again?

TED LEARY
president
CROSSWATER REALTY ADVISORS USA



Ted Leary

JOHN BACZEWSKI
president
REAL ESTATE FIDUCIARY SERVICES USA



John Baczewski

MIKE CROFT
ceo
COMMONWEALTH PARTNERS USA



Mike Croft

RICHARD FOOTE
managing director
BERKSHIRE CAPITAL SECURITIES USA



Richard Foote

TOM GOCHBERG
ceo
TGM ASSOCIATES USA



Tom Gochberg

MICHAEL LEHRMAN
managing director / co-head of the americas, refs
CREDIT SUISSE USA



James Neal

JAMES NEAL
ceo
METZLER REALTY ADVISORS USA



Josh Scoville

JOSH SCOVILLE
director of strategic research
PPR - PROPERTY & PORTFOLIO RESEARCH USA



Bleecker Seaman

BLEECKER SEAMAN
managing director
LOWE ENTERPRISES INVESTORS USA



Doug Wilson

DOUG WILSON
chairman & ceo
DOUGLAS WILSON COMPANIES USA

...as if an after-dinner conversation
in one's own living room.

Discussions

NORTH AMERICA 2009

*bargain hunter
Eldorado or long
term funk?*

RICHARD DANSEREAU
president & coo
CADIM canada



Richard Dansereau

RUSS APPELL
president
PRAEDIUM GROUP usa



Russ Appell

PIERRE FERLAND
president
MAESTRO MANAGEMENT
canada



Pierre Ferland

DEEPAK ISRANI
senior vp
PACIFICA COMPANIES usa



Deepak Israni

NELSON MILLS
president & coo
WILLIAMS REALTY ADVISORS
usa



Lee Neibart

LEE NEIBART
deputy global head,
real estate
APOLLO usa



Gordon Vollmer

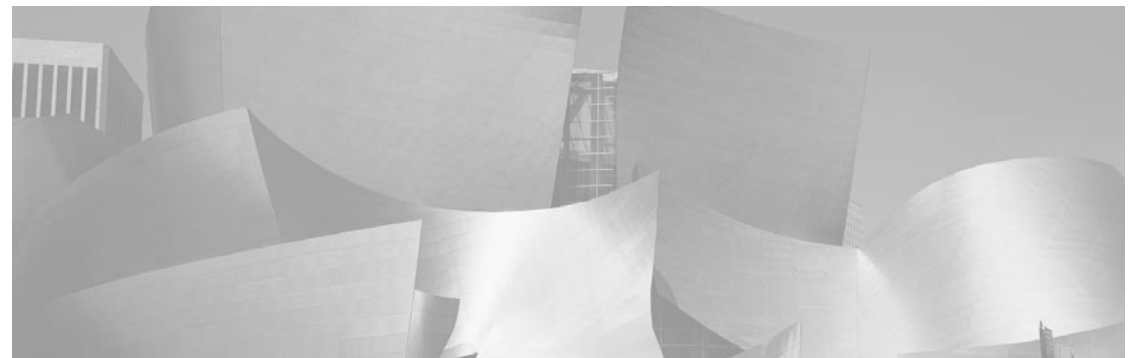
FRANK SCHMITZ
managing principal
PARK HILL GROUP usa



Frank Schmitz

GORDON VOLLMER
senior vice president,
investments
MORGUARD INVESTMENTS
canada

OFER YARDENI
managing director
STONEHENGE PARTNERSHIP usa



Discussions

DISTRESS INVESTING
is this "déjà vu" or something entirely different?

CIA BUCKLEY
 partner
DUNE CAPITAL MANAGEMENT
 usa



Cia Buckley

DAVID BRUSH
 founder & principal
CHALCOT PROPERTY PARTNERS
 uk



David Brush



Louis Dubin

CHRISTOPHER CHEE
 managing director, re
BLACKSTONE usa

LOUIS DUBIN
 president & ceo
LMD WORLDWIDE usa

JEFF GAULT
 ceo
LAND CAP PARTNERS usa



Jeff Gault



Jeffrey Giller



Ed Kavounas

JEFFREY GILLER
 managing principal & cio
LIQUID REALTY PARTNERS usa

ED KAVOUNAS
 executive managing director
ROCKWOODCAP usa



Rick Kleeman



Tim Nguyen



Sam Plimpton

RICK KLEEMAN
 managing partner
WHEELOCK STREET CAPITAL usa

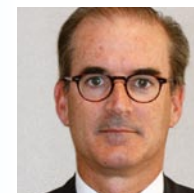
TIM NGUYEN
 senior analyst
UNIVERSITY OF CONNECTICUT ENDOWMENT usa

KEN PICACHE
 partner
APOLLOCAPITAL usa

SAM PLIMPTON
 managing director
BAUPOST GROUP usa

IF US IS ON SALE, WHY SHOP ELSEWHERE?

MICHAEL ERRICETTI
 managing director
JP MORGAN usa



Michael Errichetti

DAVID GILBERT
 managing director
ING CLARION usa



David Gilbert

STUART MACKINTOSH
 managing director, direct re
EUROPEAN INVESTORS usa



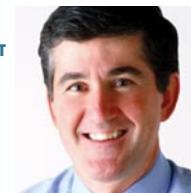
John Perkins

JOHN PERKINS
 managing director
BANK OF AMERICA SECURITIES
 usa

Discussions

PRIVATE EQUITY REAL ESTATE FUND INVESTING
are returns and risks too opaque?

STEPHEN QUAZZO
chief executive officer
TRANSWESTERN INVESTMENT
usa



Stephen Quazzo

WILLIAM BOWMAN
senior vice president,
real estate
HARTFORD INVESTMENT
MANAGEMENT usa



William Bowman

BRUCE BRICKMAN
principal
BRICKMAN usa



Steve Leblanc

STEVE LEBLANC
senior managing director,
private markets
TEACHER RETIREMENT
SYSTEM OF TEXAS usa

DEVIN MURPHY
managing partner
COVENTRY ADVISORS usa

STRATEGIES 2009
where are the opportunities?

GREGORY SHULTZ
partner
NEWBRIDGE SEARCH
PARTNERS usa



Gregory Shultz

ED CAREY
managing director
ING CLARION usa



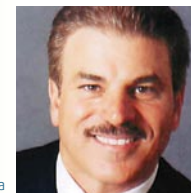
Ed Carey

EVAN DENNER
deputy ceo
HYPO REAL ESTATE CAPITAL
CORPORATION usa



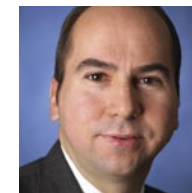
Evan Denner

MIKE FASCITELLI
president
VORNADO usa



Mike Fascitelli

DENNIS FRIEDRICH
president & coo,
us commercial operations
BROOKFIELD PROPERTIES usa



Dennis Friedrich

WILLIAM HUGHES
head of us research
UBS REALTY INVESTORS usa



William Hughes

CHIP OWEN
president & coo
THE LIGHTSTONE GROUP usa

Discussions

DEBT FINANCING
who will fill the void?

GAYLE STARR
senior vice president,
capital markets
AMB PROPERTY usa



Gayle Starr

MARK FINERMAN
managing partner
MARK FINERMAN usa



Mark Finerman

WENDELL KURTZ
managing director
ALLIANZ OF AMERICA usa



Wendell Kurtz

GREG MICHAUD
vice president re finance -
head of production
**ING INVESTMENT
MANAGEMENT AMERICAS** usa



Greg Michaud

KIP SANFORD
executive director - co head of
syndications - new york
EUROHYPO usa



Fred Van Overbeek

FRED VAN OVERBEEK
principal
PRUDENTIAL usa

**DEBT FINANCING
TOMORROW**
how will it change real estate banking, property values and investor returns?

JANE LYONS
partner
RHODES usa



Jane Lyons

JUERGEN FENK
chief executive officer
**HYPO REAL ESTATE CAPITAL
CORPORATION** usa



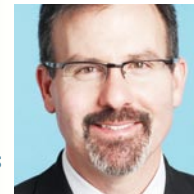
Juergen Fenk

JOHN GUNTHER-MOHR
head of us real estate finance
BANK OF SCOTLAND USA usa



John Gunther-Mohr

FRED KELLY
managing director -
us finance
TISHMAN SPEYER usa



Fred Kelly

BRIAN LANCASTER
chief investment officer and
head of portfolio strategy
WACHOVIA CAPITAL MARKETS
usa



Brian Lancaster

BEN MARCIANO
general manager
EUROHYPO usa



Ben Marciano

DAVID MAZUJIAN
managing director
ING REAL ESTATE FINANCE usa



David Mazujian

SHECKY SCHECHNER
managing director, us head
of re investment banking
BARCLAYS CAPITAL usa



Shecky Schechner

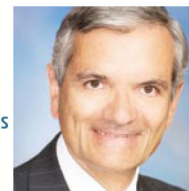
STEVEN SCHWARTZ
co-head of real estate
finance group
JP MORGAN usa

All material throughout this brochure is subject to change without notice. Ongoing updates at www.globalrealestate.org

Discussions

**US OFFICE
MARKETS
IN THE AGE
OF LESS**
*what works,
what doesn't?*

PHILIP RESTIFO
president
HAVELAND PROPERTIES usa



Philip Restifo

PHILIP BLUMBERG
chairman & ceo
BLUMBERG CAPITAL PARTNERS
usa



Philip Blumberg

SABINE GAEDEKE STENER
ceo
GAEDEKE GROUP usa



Sabine Gaedeke Stener

DENNIS IRVIN
president
& chief executive officer
ROCKEFELLER GROUP usa



Dennis Irvin

MICHAEL YUZON
vice president /
chief compliance officer
URBAN AMERICA usa



Michael Yuzon

**SHOPPING
CENTER BUYERS
AND SELLERS
AND
THE YAWNING
PRICE GAP**
*who will
blink first?*

NEIL SOSKIN
vice president
WEINGARTEN REALTY usa



WILL GLASGOW
senior executive vice president,
principal
SCANLANKEMPERBARD
COMPANIES usa



KEN HUGHES
president
HUGHES DEVELOPMENT usa



Ken Hughes

HAL SCUDDER
senior vice president,
peco capital
PHILLIPS EDISON & COMPANY
usa



Hal Scudder

Discussions

**RESIDENTIAL
REAL ESTATE**

*is there light
at the end
of the tunnel
and if so
is it another
train
or the exit?*

RICARDO KOENIGSBERGER
managing director
XE CAPITAL MANAGEMENT USA



Ricardo Koenigsberger

BOBBY GHISELLI
managing director
of acquisitions
DOUGLAS WILSON COMPANIES
USA



Bobby Ghiselli

JEFFREY L. GOLDBERG
managing partner
MILESTONE GROUP USA



Jeffrey L. Goldberg

DAVID KISLIN
managing director
SLEEPY HUDSON USA



Chris Rosenstock

ANUPAM LADHA
**MARATHON ASSET
MANAGEMENT** USA

CABOT LODGE
managing partner
ARC GLOBAL PARTNERS USA

CHRIS ROSENSTOCK
managing director
PACIFICA EQUITY PARTNERS
USA

US RESIDENTIAL
*brave new world
or just another
down cycle?*

GREG LOZINAK
executive vice president,
chief operating officer
WATERTON RESIDENTIAL USA



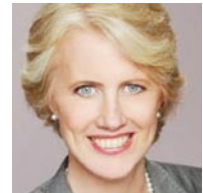
Greg Lozinak

TOM BOZZUTO
chairman
BOZZUTO GROUP USA



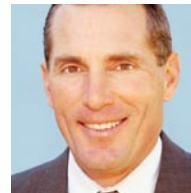
Tom Bozzuto

BEN FRIEDMAN
president
ABACUS CAPITAL GROUP USA



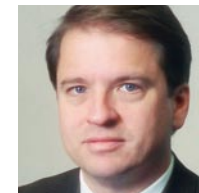
Connie Moore

CONNIE MOORE
president and ceo
BRE PROPERTIES USA



Frank Suryan

FRANK SURYAN
chairman & ceo
LYON APARTMENT COMPANIES
USA



Mark Tennison

MARK TENNISON
executive vice president
EQUITY RESIDENTIAL USA



Derek Thomas

DEREK THOMAS
vice chairman and
chief investment officer
NEWLAND COMMUNITIES USA

Discussions

**HOTEL/LODGING
INVESTOR
TODAY**
*foresight
or delusion?*

THOMAS ENGEL
president
THE T.R.ENGEL GROUP usa



Thomas Engel

JOHN HAMILTON
svp business development
PYRAMID HOTEL GROUP usa



John Hamilton

ETHAN KRAMER
president
PARAMOUNT HOTEL GROUP
usa



Ethan Kramer

GARY MENDELL
chairman and ceo
HE HOTELS usa



Gary Mendell

DAVID SOARES
president & ceo
BERKSHIRE CAPITAL usa



David Soares

ALYSON TOOMBS
principal
MERRITT CAPITAL INVESTORS
usa



Alyson Toombs

STEVE VAN
president & ceo
PRISM HOTELS usa



Steve Van

**INDUSTRIAL
PROPERTIES**
*where are the
opportunities?*

MICHAEL FRANKEL
managing partner
REXFORD INDUSTRIAL usa



Michael Frankel

BRIAN BODE
executive director
UBS usa



Brian Bode

JAY CORNFORTH
svp, managing director,
east region
AMB INVESTMENT usa



Jay Cornforth

JEAN TEASDALE
MONTREAL AIRPORT usa

Discussions

**PUBLIC
TO PRIVATE**
*out-of-date
or compelling?*

MERRIE FRANKEL
senior credit officer/vice
president, re finance group
MOODY'S INVESTORS USA



Merrie Frankel

BRUCE BATKIN
president
TERRA CAPITAL USA



Bruce Batkin

GEORGE PANDALEON
president
**INLAND INSTITUTIONAL
CAPITAL PARTNERS** USA

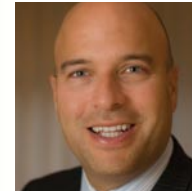


George Pandaleon

STEPHEN SMITH
founding principal
BRYANSTON REALTY PARTNERS
USA

**NEW
(RE-)DEVELOPMENT**
*is now
the best time?*

KEN SEGAL
president & ceo
SEGBRO USA



Ken Segal

KATHY JASSEM
portfolio manager
STATE OF NJ TREASURY USA



Kathy Jassem

MARK MARTIAK
vice president investments
UBS USA

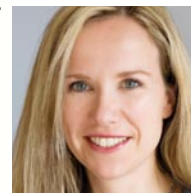
TODD VENDER
vice president
BLUE VISTA USA

All material throughout
this brochure is subject
to change without notice.
Ongoing updates at
www.globalrealestate.org

Discussions

GLOBAL INVESTING
more compelling than ever or compromised case?

WIEBKE WANNER-BORCHARDT
 director - foreign acquisitions
TIAA-CREF usa

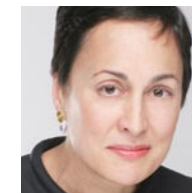


Wiebke Wanner-Borchardt

SIEGMUT BOEHM
 senior real estate investment manager
AM ALPHA germany



Siegmüt Boehm



Joanne Douvas

JOANNE DOUVAS
 principal
CLERESTORY CAPITAL PARTNERS usa

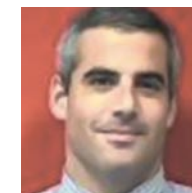
TIMOTHY GRADY
 managing director
MERRILL LYNCH hong kong



Timothy Grady



Michelle LeRoy



Jay Mantz

MICHELLE LEROY
 managing director, capital transactions
MACQUARIE REAL ESTATE usa

JAY MANTZ
 global co-head real estate
MORGAN STANLEY usa

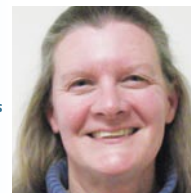
GREGORY RUSH
 managing director
DUNE CAPITAL MANAGEMENT usa



Gregory Rush

WESTERN EUROPE
great value or "has been"?

CAROLINE MCBRIDE
 managing director
FORUM PARTNERS usa



Caroline McBride

GLORIA GIL
 managing director, real assets
UNIVERSITY OF CALIFORNIA REGENTS usa



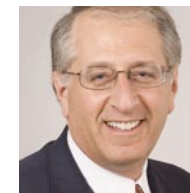
Gloria Gil

JEFFREY HAROLDSON
 president
HDG MANSUR usa



Jeffrey Haroldson

HOWARD ROTH
 global & americas real estate leader
ERNST & YOUNG usa



Howard Roth

Discussions

**EMERGING
MARKETS
INVESTING**
*15 minutes
of fame or
a sustainable
investment
strategy?*

KEN MUNKACY
senior managing director
GENERAL INVESTMENT usa



Ken Munkacy

ANTHONY BREault
real estate investment officer
OREGON STATE
RETIREMENT SYSTEM usa



Anthony Breault

MICHAEL BUCKLEY
director, re development
program
COLUMBIA UNIVERSITY usa



Michael Buckley

**CENTRAL
EASTERN
EUROPE**
*Eldorado
or too late?*

TORE BORTHEN
managing partner
REAL KAPITAL norway



Tore Borthen

GREG GELETKA
chief operating officer
AMSTAR GLOBAL usa



Greg Geletka

EDWARD GLUSCHENKO
president & ceo
UKRAINIAN
REAL ESTATE FUND ukraine



Edward Gluschenko

CHAIM KATZMAN
chairman
GAZIT GROUP USA usa

WOLFGANG LUNARDON
ceo
AKRON RETAIL usa

INDIA
*what holds
it back?*

SKIP CONOVER
chairman
BHAVANA DEVELOPERS usa



Skip Conover

THOMAS BOYTINCK
managing director
FARRAGUT CAPITAL usa



Thomas Boytinck

SOURAV GOSWAMI
managing director
WALTON STREET CAPITAL
INDIA india



Sourav Goswami

MARK HERTZ
managing director
AMSTAR GLOBAL usa



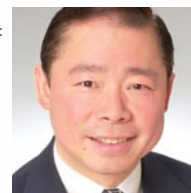
Mark Hertz

SANDEEP MATHRANI
executive vice president
VORNADO usa



Sandeep Mathrani

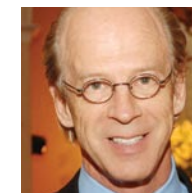
Discussions

**INVESTING
IN CHINA**
*where are
the risks?***WILLIAM TUNG**
managing director asia pacific
ROCKEFELLER GROUP usa

William Tung

HENDRIK GIENOW
managing director
and regional head
EUROHYPO germany

Hendrik Gienow

JOHN ("JACK") PORTMAN III
vice chairman
PORTMAN usa

John ("Jack") Portman III

DAVID SU
partner
GLOBAL CAPITAL
INVESTMENTS GROUP china

David Su

BING WANG
managing director
YONGYOU INVESTMENTS
usa

Bing Wang

CHARLIE WANG
managing director
OAKTREE CAPITAL usa

Christopher Taube

RICHARD YUE
ceo
ARCH CAPITAL MANAGEMENT
hong kong

Richard Yue

CHRISTOPHER TAUBE
director
AETOS CAPITAL hong kong**RUSSIA**
*repricing
or meltdown?***THEODORE LIEBMAN**
principal
PERKINS EASTMAN usa

Theodore Liebman

TIMOTHY FENWICK
managing director
QUANTUM POTES russia

Timothy Fenwick

BORIS KOROL
chairman of finance committee
MIRAX GROUP russia

Boris Korol

JEFF RUTISHAUSER
chief executive officer
AMSTAR GLOBAL usa

Jeff Rutishauser

Discussions

**ATTRACTING
THE BEST
TALENT**
*who matters
now?*

THOMAS WILLIAMS
senior managing director
SPECIALTY CONSULTANTS usa

BOB DEWITT
member of executive committee
**GENERAL INVESTMENT &
DEVELOPMENT CORPORATION**
usa

PAUL EARLE
evp-multifamily division
COLONIAL PROPERTIES usa

AL NEELY
chief development officer
ARCHSTONE usa



Al Neely

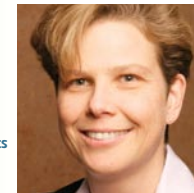
SUSTAINABILITY
*can one make
money out of it?*

ULRICH DISCHLER
director,
alternative investments
**CREDIT SUISSE ASSET
MANAGEMENT** usa

CAROLINE ANGOORLY
head of environmental markets
– north america
JP MORGAN usa

RON HERBST
head of energy management
and sustainability
DEUTSCHE BANK uk

JONATHAN WESTEINDE
managing partner
WINDMILL DEVELOPMENT
canada



Caroline Angoorly



Ron Herbst



Jonathan Westeinde

**VISIONS
& VALUATIONS**
*whose opinion
matters most?*

JOHN PETERS
president
PETERS AND ASSOCIATES usa

FRANK CREAMER
MMA REALTY CAPITAL usa

DOUGLAS LAWRENCE
managing director
JP MORGAN usa

TOM LYDON
president
CITY INVESTMENT FUND usa



John Peters



Douglas Lawrence



Tom Lydon

All material throughout
this brochure is subject
to change without notice.
Ongoing updates at
www.globalrealestate.org



ASIAGRI

Singapore 4-5 March

2009

Real Estate Investment & Development in Asia

www.MyGRI.com/Asia



Individual and Corporate Membership of the GRI is open to senior players in the real estate industry that find it beneficial to belong to a global community of elite achievers in their industry

INDIVIDUAL MEMBERSHIP

- GRI Members as of December 31 are listed in the GRI Yearbook of the subsequent year.
- GRI Members benefit from reduced Member rates when registering to attend GRI Meetings.
- GRI Members are invited to private GRI Board Dinners.
- Complete list of membership benefits available on request.

CORPORATE MEMBERSHIP

- Please contact Henri Alster, Chairman, GRI:
henri.alster@globalrealestate.org



The GRI Yearbook celebrates GRI Corporate and Individual Members annually.

Profiling in the Yearbook is automatic with annual membership.

The Yearbook is available to GRI Members only.
www.MyGRI.com/Yearbook2008



Caisse de dépôt et placement
du Québec

Cadim is a global real estate investment manager that focuses on a wide range of equity products in association with prominent partners. Cadim distinguishes itself by its flexibility, creativity and ability to adapt to specific market needs and practices.

Richard Dansereau
rdansereau@cadim.com
Tel +1 514 673 1356

COMMERZBANK
Group



Eurohypo is the leading specialist bank for commercial real estate and public finance. The Bank has an excellent position in the global market. For professional clients Eurohypo offers worldwide the entire added value chain in complex real estate financing transactions, covering traditional loans business as well as real estate investment. Eurohypo is a global player with presence in nearly every European country and is one of the top-players in the USA. The bank has also established its corporate finance business in Asia/Pacific as well as in Latin America.

Dr. Frank Poerschke
frank.poerschke@eurohypo.com
Tel +49 69 2548 20040

Ben Marciano
ben.marciano@ehy-us.com
Tel +1 212 479 5700



ING Real Estate is a leader in international real estate lending. We serve clients in major markets across the globe. Our experience, ability and insight place us in an ideal position to offer clients competitive, flexible and creative solutions for their real estate financing needs. Our products include investment finance, development and construction finance, securitisation, sale and leaseback transactions and syndicated loans.

Emmanuel Verhoosel
emmanuel.verhoosel@ingrealestate.com
Tel +44 20 7767 5239

David Mazujian
david.mazujian@ingrealestate.com
Tel +1 212 883 2620

USA GRI

SPONSORSHIP OPPORTUNITIES

Please contact
Henri Alster, Chairman, GRI

henri.alster@globalrealestate.org
Tel (011 from USA) +44.20 8445 6600

REGISTRATION NOTES

USA GRI 2009 26 FEBRUARY

THE PLAZA Fifth Avenue @ Central Park South, New York

VENUE

The Plaza A Fairmont Managed Hotel
Fifth Avenue @ Central Park South
New York, NY 10019

ACCOMMODATION

Lodging costs are not included in conference fees.

GRI attendees benefit from a preferential rate at the Plaza and at the Le Parker Meridien, 6 minutes away, subject to availability, if booking online (not available through travel agents).

Please book directly with the hotels.

To book at the Plaza hotel: download Plaza reservation form from GRI website, <http://www.mygri.com/GRI2009UHotelReservation.pdf> complete and fax it to the hotel
Phone: +1 212 546-5225 Fax: +1 212-546-5260
Email: plazareservation@fairmont.com

To book at the Le Parker Meridien hotel: please book online. Copy and paste the following link in your web browser, <http://www.starwoodmeeting.com/Book/gri09>
Le Parker Meridien, 118 West 57th Street New York NY 10019-3318
Phone: +1 212 245-5000 Fax: +1 212-307-1776 email: reservations@parkermeridien.com

BADGES

Delegates must wear badges at all times. Admission will regrettably not be possible otherwise.

TERMS AND CONDITIONS

Payment is required by return. Delegate fee must be paid in full prior to conference or admission is regrettably not possible.

Confirmation will be sent on receipt of payment. If you have not received confirmation within 14 days of registration, please contact us to confirm your booking.

Cancellation and transfer to colleagues must be in writing. Transfer to colleagues is possible at any time. 90% refund will apply if cancellation notice is received by 26th Jan 2009. We regret no refunds are possible for cancellations received thereafter.

ONSITE REGISTRATIONS

Fee for onsite payment (credit card or cash only) \$175

(1) CHECK

Payment methods other than credit card incur additional \$100 charge. Pay "GRI". Mail check and registration form to:
GRI, 1379 High Road, London N20 9LP, UK

(2) GROUP RATE

Group rate is per person.
Applies to groups of 3 or more participants.
Need not be from the same company.
Please note that registration fee reductions are not cumulative.

Group rate - 3 or more, save \$200

[FOR DISCUSSION (CO-)CHAIRS AND MEMBERS ONLY:]

Please email before Jan 26th to: og@globalrealestate.org



PLEASE PROVIDE:

1. COMPANY SPECIALITY - maximum 16 words:

- Investors/lenders: criteria (type • where • amount range • existing vs development...)

Example:

"office, hotels, bulk sales • Germany, CEE, China • US\$100-500 million • existing or development • major metros only"

- Developers: product speciality (type • where • size range • existing v development...)

- Other: describe speciality bullet point style

2. COLOR PORTRAIT PHOTO: **HIGH RESOLUTION .JPG**

3. LOGO: COLOR • B/W • INVERSE (.EPS FORMAT)

4. PERSONAL BIOGRAPHY + DIVISION'S PROFILE

- 75 words maximum total, in 1 or 2 languages [adjust pro-rata if other language takes less space (e.g. Mandarin - 2 to 1) or more].
- Division's profile: division's specific activity (more relevant & useful than company's overall)

INDUSTRY PARTNER



20th anniversary 10-13 March 2009
Palais des Festivals, Cannes, France

WWW.MIPIM.COM

All material throughout this brochure is subject to change without notice. Ongoing updates at www.globalrealestate.org

Inquiries and further information:

Olga Giles
Tel: (011 from USA) + 44.20 8492 2629
og@globalrealestate.org

Main office:

511 Ave of the Americas
suite 4100, New York,
N.Y 10011 USA

European Services:

1379 High Road
11th floor, London,
N20 9LP, UK

Ongoing updates at
WWW.GLOBALREAL ESTATE.ORG



**GLOBAL
REAL
ESTATE
INSTITUTE**

Fax to: (011 from USA) +44.20 8445 6633

MR/MRS/DR	FIRST	INITIALS	LAST	(III/JR/...)	NICK/BADGE NAME
POSITION					
DIRECT TEL			EMAIL		
FAX			COMPANY		
ASSISTANT		TEL	EMAIL		
ADDRESS					
CITY	STATE	POSTCODE	COUNTRY		
DIVISION'S WEB ADDRESS (EX: WWW.COMPANY.EXT/DIVISION...)					

- | | | |
|---|---|---|
| <input type="checkbox"/> INVESTOR | <input type="checkbox"/> CORPORATE (User) | <input type="checkbox"/> ECONOMIC DEVELOPMENT |
| <input type="checkbox"/> PENSION (Investor) | <input type="checkbox"/> AGENT (Surveyor) | <input type="checkbox"/> ACADEMIC (Think Tank) |
| <input type="checkbox"/> PROPERTY COMPANY (Developer) | <input type="checkbox"/> ADVISOR (Accountant/Tax) | <input type="checkbox"/> MEDIA |
| <input type="checkbox"/> INFRASTRUCTURE COMPANY | <input type="checkbox"/> LAWYER | <input type="checkbox"/> TRADE (Group/Exhibit/
Conference Organiser) |
| <input type="checkbox"/> LENDER | <input type="checkbox"/> A&E (Architect/Engineer) | <input type="checkbox"/> OTHER _____ |
| <input type="checkbox"/> HOTEL (Company) | <input type="checkbox"/> TITLE (COMPANY) | |
| <input type="checkbox"/> INVESTMENT BANK | <input type="checkbox"/> GOVERNMENT (Officials) | |

PAYMENT DETAILS *A receipt will be returned.*

PLEASE TICK VISA MASTERCARD AMEX CHECK (+\$100)⁽¹⁾

CARD NUMBER _____

NAME ON CARD _____

EXPIRY _____ SIGNATURE _____

CREDIT CARD BILLING ADDRESS, if different from above (important, please provide)

STREET ADDRESS _____

CITY _____ STATE/COUNTY _____ POSTCODE _____

USA GRI 2009 NYC, 26 February	Single Non Member	Group rate ⁽²⁾ Non Member	Discussion Chair or GRI Member
Until 26 Jan	<input type="checkbox"/> \$2,275	<input type="checkbox"/> \$2,075	<input type="checkbox"/> \$1,875
After 26 Jan	<input type="checkbox"/> \$2,375	<input type="checkbox"/> \$2,175	<input type="checkbox"/> \$1,975
Fee for payment methods other than credit card			<input type="checkbox"/> \$100
Fee for onsite payment (credit card or cash only):			<input type="checkbox"/> \$175
Public Pensions special rate: email - og@globalrealestate.org			

Early registration - Save \$100 prior to Jan 26th 2009

RESERVE YOUR SPACE: SIGN UP FOR GROUP DISCUSSIONS

- US DISTRESS INVESTING** where, when and what?
- US PENSIONS & TAX-EXEMPTS IN GLOBAL RE: LPs MEETING GPs** do strategies need adjusting?
- FUND AND ASSET RESTRUCTURING** is it workout time again?
- NORTH AMERICA 2009** bargain hunter Eldorado or long term funk?
- DISTRESS INVESTING** is this "déjà vu" or something entirely different?
- IF US IS ON SALE, WHY SHOP ELSEWHERE?**
- PRIVATE EQUITY REAL ESTATE FUND INVESTING** are returns and risks too opaque?
- STRATEGIES 2009** where are the opportunities?
- DEBT FINANCING** who will fill the void?
- DEBT FINANCING TOMORROW** how will it change re banking, property values & investor returns?
- US OFFICE MARKETS IN THE AGE OF LESS** what works, what doesn't?
- SHOPPING CENTER BUYERS AND SELLERS AND THE YAWNING PRICE GAP** who will blink first?
- RESIDENTIAL REAL ESTATE** is there light at the end of the tunnel; another train or the exit?
- US RESIDENTIAL** brave new world or just another down cycle?
- HOTEL/LODGING INVESTOR TODAY** foresight or delusion?
- INDUSTRIAL PROPERTIES** where the opportunities?
- PUBLIC TO PRIVATE** out-of-date or compelling?
- GLOBAL INVESTING** more compelling than ever or compromised case?
- EMERGING MARKETS INVESTING** 15 minutes of fame or a sustainable investment strategy?
- CENTRAL EASTERN EUROPE** Eldorado or too late?
- INDIA** what holds it back?
- INVESTING IN CHINA** where are the risks?
- RUSSIA** repricing or meltdown?
- ATTRACTING THE BEST TALENT** who matters now?
- NEW (RE-)DEVELOPMENT** is now the best time?
- SUSTAINABILITY** can one make money out of it?
- VISIONS & VALUATIONS** whose opinion matters most?

Sign-up for group discussions

Group discussions run concurrently for 75 minutes each, in successive series of 6 to 7 at a time. Prior sign-up is required for participation, as there is limited seating capacity. While the GRI is committed to trying to satisfy sign-up requests, it regrettably cannot guarantee availability. Please tick (✓).

GRI ANNUAL

MEMBERSHIP FEES (Optional)

	US\$
Regular	<input type="checkbox"/> \$2,400
Discussion co-Chair**	<input type="checkbox"/> \$800

** Available for confirmed & fee-paying Discussion co-Chairs after settling event fees and before the event has taken place.

Senior Partners



Media and Industry Partners

