

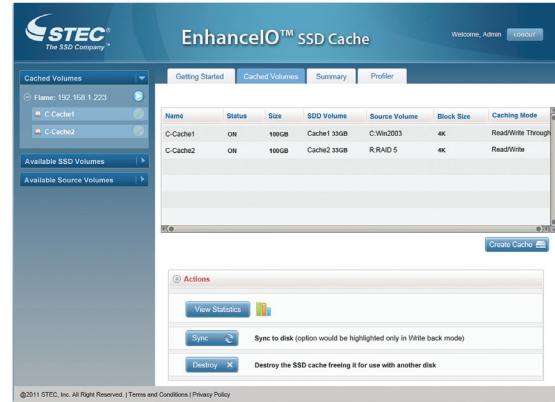
STEC EnhanceIO™ SSD Cache Software

Cost-Effective Application Acceleration



Until now, IT departments have struggled to find ways to fully realize the benefits of SSD technology because many servers were not capable of full performance through the simple replacement of traditional hard disk drive (HDD) storage with SSDs. To meet the growing demand for cost-effective scalability, enterprise server environments need a solution running below the application layer that utilizes the full IO capabilities of the SSD. For practical adoption, this solution must be both easy to implement and transparent to the application.

STEC's EnhanceIO™ SSD Cache Software provides a reliable, easy and flexible way to scale your data center and speed performance using your server platforms. STEC EnhanceIO SSD Cache Software accelerates data access response time by delivering performance at the speed of SSDs, with HDD capacity and price points, to dramatically reduce your total cost of ownership.



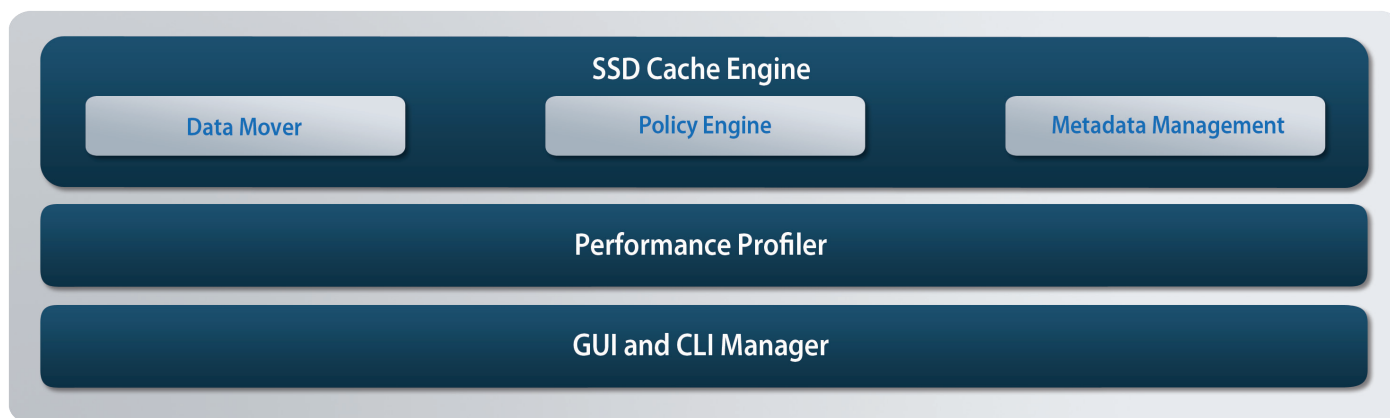
Features	Benefits
Cross-platform solution	Simplifies integration into existing server infrastructure and works with SSDs to accelerate many enterprise applications running under Windows, Linux and VMware
Performance profiler	Identifies opportunities for performance optimization and enables customized solutions for specific workloads
SSD performance with HDD capacity	Enables cost-effective scalability, so you can support growing numbers of users and larger data volumes, while minimizing total cost of ownership
Optimized for STEC SSDs	Provides data persistence and instant backup and recovery in the event of an unplanned power failure
IO manageability through a Web-based GUI	Manage setup and connection of storage volumes according to user-defined policies
Data protection	Manages all data written back to the target storage volume to prevent loss of user data

Cost-Effective Scalability

By adding STEC's EnhanceIO SSD Cache Software and SSDs, IT managers can cost-effectively scale the existing enterprise IT infrastructure and increase the speed of application performance, without incurring the cost of additional hardware. STEC EnhanceIO SSD Cache Software installs easily in a target host server, is easy to configure, and operates with virtually no monitoring or maintenance.

STEC EnhanceIO™ SSD Cache Software

Specifications	
Overview	Software solution independent of hardware for accelerating any host block based storage volume DAS/RAID, iSCSI LUN, Fibre Channel LUN, SAN volume
Compatible SSD devices	Any solid-state device (SAS, SATA, PCIe, Fibre Channel)
Operating systems	64-Bit Microsoft Server 2008/2008 R2 64-Bit Linux Distributions - RHEL 5/6, Suse enterprise 11
Cache mode	Read Cache, Write Back Cache or Write-through Cache
System CPU utilization	<5%
System RAM utilization	0.01 (1/10 th of 1% or 100MB for 100GB SSD Cache)
Management	GUI or CLI utilities to create or remove cache and monitor performance



STEC: The Leader in Enterprise-Class Solid-State Solutions

From storage to server applications, STEC enterprise-class solid-state solutions are designed from the ground up to help you manage unprecedented volumes of data by accelerating access to the data you need, and reducing the cost to access that data. By incorporating STEC SSDs top-to-bottom in your enterprise infrastructure, you can deploy tiered solutions tailored to your exacting requirements, from reducing server sprawl to optimizing server utilization and optimizing address space.

At STEC, we are maintaining our enterprise storage leadership by investing world-class engineering resources to design and develop advanced solid-state technologies that maximize reliability, availability and serviceability, while reducing total cost of ownership in your storage and server applications.

For more information on STEC products, solutions and technology, please visit www.stec-inc.com

 facebook.com/userstecinc

 twitter.com/stec_inc

 youtube.com/user/stecincssd

+1.949.476.1180
3001 Daimler Street, Santa Ana, CA 92705

©2011 STEC, Inc. The STEC name, logo, and design are trademarks of STEC, Inc.
All other trademarks are the property of their respective owners. 07/11 61000-09002-001

