



# Become a Cowboy



*Excellence with a Personal Touch*



## Fact Book 2010-2011

Prepared by: Office of Institutional Research

[www.mcneese.edu/ir](http://www.mcneese.edu/ir)

**McNeese State University**  
4205 Ryan Street  
Lake Charles, LA 70609

# **Fact Book 2010 - 2011**

## **Table of Contents**

<b>History.....</b>	<b>1</b>
<b>Mission Statement.....</b>	<b>2</b>
<b>Institutional Goals.....</b>	<b>3</b>
<b>Organizational Chart.....</b>	<b>4</b>
<b>Accreditation .....</b>	<b>5</b>
<b>Inventory of Degree Programs .....</b>	<b>6</b>
<b>Fall Enrollment .....</b>	<b>9</b>
<b>Historical Fall Enrollment Data Since 1939 .....</b>	<b>31</b>
<b>First-Time Freshmen .....</b>	<b>33</b>
<b>Transfers.....</b>	<b>43</b>
<b>Spring Enrollment .....</b>	<b>47</b>
<b>Historical Spring Enrollment Data Since 1940 .....</b>	<b>67</b>
<b>Degrees Conferred .....</b>	<b>72</b>
<b>Student Credit Hours (SCH).....</b>	<b>79</b>
<b>Financial Aid .....</b>	<b>88</b>
<b>Full-Time Average Annual Fees .....</b>	<b>88</b>
<b>Revenues .....</b>	<b>89</b>
<b>Expenditures.....</b>	<b>89</b>
<b>Faculty/Staff .....</b>	<b>90</b>
<b>Facilities .....</b>	<b>92</b>



## History

McNeese State University was established by the Louisiana Legislature in 1939. The institution was first named Lake Charles Junior College, and was a division of Louisiana State University with the opening session beginning on September 11, 1939. The following fall, the school changed its name to John McNeese Junior College to honor John McNeese, a renowned Southwest Louisiana educator and the first superintendent of schools in Imperial Calcasieu Parish. In 1950, McNeese became a four-year college in its own right and came under the authority of the Louisiana Board of Education. Finally, in 1970, McNeese State University became the official name of the school.

McNeese achieved Commission on Colleges/Southern Association of Colleges and Schools accreditation in 1954 and maintains its regional accreditation status as a Level IV institution authorized to award associate, bachelor, master, and specialist degrees.

The University also provides opportunities for continuing education in support of its mission to value lifelong learning. As a member of the University of Louisiana System and a selective admissions institution, McNeese offers degrees through the six academic colleges of Business, Education, Engineering and Engineering Technology, Liberal Arts, Nursing, and Science, and the Doré School of Graduate Studies, and General and Basic Studies. McNeese's student body is comprised of students from throughout Louisiana, the United States, and over 50 countries. McNeese's athletic program fields 16 NCAA men and women's athletic teams.

The McNeese State University campus in Lake Charles, Louisiana, features 68 buildings on 500 acres dotted with live oak trees and azalea bushes. The McNeese community continues to use the university's three original structures — Kaufman Hall, Ralph O. Ward Memorial Gym (the Arena), and Francis G. Bulber Auditorium. Bulber Auditorium, a striking example of Art Deco architecture, is listed on the National Register of Historic Places.

In fall 2010, the 59,918 square foot addition to the Shearman Fine Arts Building opened. The addition, which houses the Departments of Performing Arts and Visual Arts, features a state-of-the-art 526-seat theatre, dressing rooms, rehearsal hall, costume and scene shops, ceramics and sculpture studios, digital and traditional photography areas, additional exhibition space, practice rooms and a choral library.

McNeese State University upholds a long tradition of service to the Southwest Louisiana community and the nation. The University motto of "Excellence with a Personal Touch" extends beyond the classroom to offering help to others in times of need. During World War II, the campus was the headquarters of the Louisiana Maneuvers, an extensive military exercise to prepare American soldiers for battle. In 1957, the McNeese community gave aid and comfort to the victims of Hurricane Audrey and served as the National Guard's base of rescue operations. Recently, McNeese provided shelter for New Orleans residents and university students fleeing from Hurricane Katrina. McNeese faced one of its greatest challenges when Hurricane Rita struck in the fall of 2005. The storm caused devastating damage to campus facilities and infrastructure. The recovery effort after Hurricane Rita demonstrated the resilience and commitment of the McNeese faculty, staff, and students to higher education and to moving forward in support of the core values of academic excellence, student success, fiscal responsibility, and university/community alliances.

## **Mission Statement**

McNeese State University, a selective admissions institution, provides education, research, and service that support core values of academic excellence, student success, fiscal responsibility, and university-community alliances. The University's fundamental educational mission is to offer associate, baccalaureate, and specific graduate curricula distinguished by academic excellence. The University engages in collaborative ventures to benefit industry and to enhance economic development and cultural growth in this region and beyond.

The foundation for student success begins with faculty commitment to excellence in teaching, research, and creative and scholarly activity. At McNeese State University, a member of the University of Louisiana System, students cultivate skills for critical thinking and effective expression and gain an understanding of the global community. The learning and social environment integrates discipline-specific knowledge with the values of lifelong learning, ethical responsibility, and civic engagement.

*Adopted by McNeese State University - 2/21/05*

*Approved by the Board of Supervisors of the University of Louisiana System - 4/29/05*

# Institutional Goals

*Adopted 6/29/05*

*Revised 8/11/05*

## Academic Excellence

1. Emphasize excellence in instruction.
2. Develop programs that are viable, innovative, and relevant to market needs.
3. Infuse a global outlook and ethical standards in course content and curriculum development.
4. Uphold the commitment to regional and national program accreditation.
5. Encourage undergraduate and graduate research in appropriate disciplines.

## Student Success

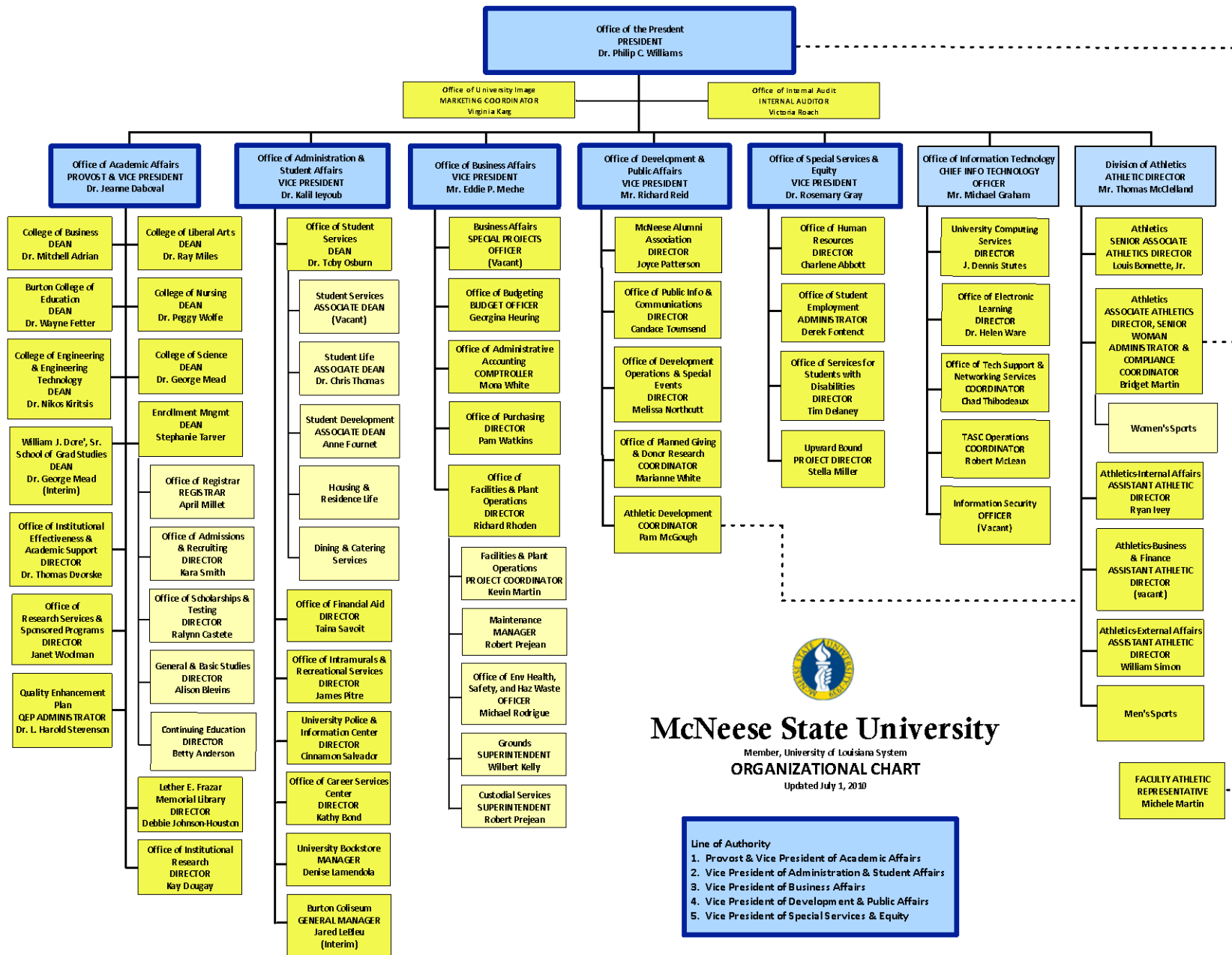
1. Foster a climate that enhances student learning, focuses on retention, values advising, and enriches the quality of campus life.
2. Nurture an environment to support cultural diversity.
3. Present students opportunities for leadership.
4. Provide venues for learning to attract non-traditional students.
5. Provide an aesthetically-pleasing campus, functional facilities, and state-of-the-art equipment.

## Fiscal Responsibility

1. Engage in continuous assessment, evaluation, and improvement.
2. Utilize the role of technology to increase the efficiency and effectiveness of campus operations.
3. Garner outside funding sources to support the University mission.
4. Capitalize on efficient use of resources.
5. Support efforts to obtain federal funding.

## University-Community Alliances

1. Support mutually beneficial university/community collaborations.
2. Strengthen economic development through partnerships that provide technical assistance and information transfer to business and industry.
3. Enhance artistic, humanistic, and cultural opportunities in the area.
4. Retain certification and maintain competition in NCAA athletic programs
5. Partner with educational agencies to improve the quality of life in our region.



## Accreditation

McNeese State University is accredited by the Commission on Colleges of the Southern Association of Colleges and Schools, 1866 Southern Lane, Decatur, Georgia 30033-4097, P-404.679.4500, [www.sacscoc.org](http://www.sacscoc.org), to award associate, bachelor, master, and specialist degrees. A comprehensive list of other agencies included in the Board of Regents General Policy on Program Accreditation that have accredited or approved McNeese academic programs follows:

- AACSB International – The Association to Advance Collegiate Schools of Business International, 7777 South Harbor Island Blvd., Suite 750, Tampa, FL 33602-5730, P- (813) 769-6500, [www.aacsb.edu/](http://www.aacsb.edu/).
- AAFCS – American Association of Family and Consumer Sciences, 400 N. Columbus St., Suite 202, Alexandria, VA 22314, P- (703) 706-4600, [www.aafcs.org](http://www.aafcs.org).
- ACS – American Chemical Society, 1155 Sixteenth St. NW, Washington, DC 20036, P- (800) 227-5558, [www.acs.org](http://www.acs.org).
- CADE – Commission on Accreditation for Dietetics Education, American Dietetic Association, 120 S. Riverside Plaza, Suite 2000, Chicago, IL 60606-6995, P- (800)877-1600, [www.eatright.org](http://www.eatright.org).
- CAC/ABET Inc. – Computing Accreditation Commission of the Accreditation Board of Engineering and Technology, 111 Market Place, Suite 1050, Baltimore, MD 21202-4012, P- (410) 347.7700, [www.abet.org](http://www.abet.org).
- CCNE – Commission on Collegiate Nursing Education for American Association of College of Nursing, One Dupont Circle, NW, Suite 530, Washington, DC 20036, P- (202)463-6930, [www.aacn.nche.edu/index.htm](http://www.aacn.nche.edu/index.htm).
- EAC/ABET Inc. – Engineering Accreditation Commission of the Accreditation Board of Engineering and Technology, 111 Market Place, Suite 1050, Baltimore, MD 21202-4012, P- (410) 347-7700, [www.abet.org](http://www.abet.org).
- JRCERT – Joint Review Committee on Education in Radiologic Technology, 20 N. Wacker Drive, Suite 2850, Chicago, IL 60606-3182, P- (312) 704-5300, [www.jrcert.org](http://www.jrcert.org).
- NAACLS – National Accrediting Agency for Clinical Laboratory Sciences, 8410 W. Bryn Mawr Ave., Suite 670, Chicago, IL 60631, P- (773) 714-8880, [www.naacls.org](http://www.naacls.org).
- NASAD – National Association of Schools of Art and Design, 11250 Roger Bacon Dr., Suite 21, Reston, VA 20190, P-(703) 437-0700, <http://nasad.arts-accredit.org/>.
- NASM – National Association of Schools of Music, 11250 Roger Bacon Drive, Suite 21, Reston, VA 20190-5248, P-(703) 437-0700, <http://nasm.arts-accredit.org>.
- NCATE – National Council for Accreditation of Teacher Education, 2010 Massachusetts Ave. NW, Suite 500, Washington, DC 20036, P- (202) 466-7496, [www.ncate.org](http://www.ncate.org).
- NLNAC – National League for Nursing Accrediting Commission, 61 Broadway, New York, NY 10006, P- (800) 669-1656, [www.nln.org](http://www.nln.org).
- TAC/ABET Inc. – Technology Accreditation Commission of the Accreditation Board of Engineering and Technology, 111 Market Place, Suite 1050, Baltimore, MD 21202-4012, P- (410) 347-7700, [www.abet.org](http://www.abet.org).

Other agencies that have approved or certified programs include:

- AAHPERD/NASPE – American Alliance for Health, Physical Education, Recreation and Dance/National Association for Sport and Physical Education
- ACEI – Association for Childhood Education International
- CEC – Council for Exceptional Children
- ISTE – International Society for Technology Education
- BESE – Louisiana Board of Elementary and Secondary Education
- ELCC – Educational Leaders Constituency Consortium
- LSBN – Louisiana State Board of Nursing
- NAEYC – National Association for the Education of Young Children
- NCAA – National Collegiate Athletic Association
- NCTE – National Council of Teachers of English
- NCTM – National Council of Teachers of Mathematics
- NSTA – National Science Teachers Association
- OAKE – Organization of American Kodály Educators



## Inventory of Degree Programs

<b>General and Basic Studies</b>		
General Studies		A.G.S.
General Studies		B.G.S.
<b>College of Business</b>		
Accounting		B.S.
Business Administration		M.B.A.
Finance		B.S.
General Business Administration		B.S.
Management		B.S.
Marketing		B.S.
<b>Burton College of Education</b>		
Athletic Training		B.S.
Business Education-Grades 6-12		B.S.
Curriculum and Instruction		M.Ed.
Early Childhood Education-Grades PK-3		B.S.
Educational Leadership		M.Ed.
Educational Leadership		Ed.S.
Educational Technology Leadership		M.Ed.
Elementary Education-Grades 1-5		B.S.
Elementary Education-Grades 1-5		M.A.T.
Health and Physical Education-Grades K-12		B.S.
Health and Human Performance, General		B.S.
Health and Human Performance		M.S.
Instructional Technology		M.S.
Psychology		B.S.
Psychology		M.A.
School Counseling		M.Ed.
Secondary Education-Grades 6-12		M.A.T.
Special Education		M.Ed.
<b>College of Engineering &amp; Engineering Technology</b>		
Engineering		B.S.
Engineering		M. Eng.
Engineering Technology		A.S.
Engineering Technology		B.S.

<b>College of Liberal Arts</b>		
Art		B.A.
Art Education-Grades K-12		B.A.
Communication Studies		B.A.
Creative Writing		M.F.A.
Criminal Justice		B.S.
English		B.A.
English		M.A.
English Education-Grades 6-12		B.A.
Foreign Languages		B.A.
French Education-Grades 6-12		B.A.
Government		B.A.
History		B.A.
Latin Education-Grades 6-12		B.A.
Liberal Studies		B.A.
Mass Communication		B.S.
Music Education- Instrumental Grades K-12		B.M.Ed.
Music Education-Kodály Studies		P.B.C.
Music Education-Vocal Grades K-12		B.M.Ed.
Music Performance		B.M.
Paralegal Studies		A.A.
Social Studies Education-Grades 6-12		B.A.
Sociology		B.A.
Spanish Education-Grades 6-12		B.A.
Speech Education-Grades 6-12		B.S.
Theatre Arts		B.A.
<b>College of Nursing</b>		
Nursing		A.D.N.
Nursing		B.S.N.
Nursing		M.S.N.
<b>College of Science</b>		
Agricultural Education-Grades 6-12		B.S.
Agricultural Sciences		B.S.
Biological Science		B.S.
Biology Education-Grades 6-12		B.S.
Chemistry		B.S.
Chemistry Education-Grades 6-12		B.S.
Clinical Laboratory Science		B.S.
Computer Information Technology		A.S.
Computer Science		B.S.
Environmental and Chemical Sciences		M.S.
Environmental Science Education-Grades 6-12		B.S.
Family and Consumer Sciences		B.S.
Family and Consumer Sciences Education-Grades 6 -12		B.S.
Mathematics Education-Grades 6-12		B.S.
Mathematical Sciences		M.S.
Mathematics		B.S.
Natural Resource Conservation Management		B.S.
Physics		B.S.
Radiologic Sciences		B.S.

This Page is Intentionally Left Blank

# Fall Enrollment Fall 2010

## Fall 2010 Enrollment by Level

	<u>Enrollment</u>	<u>Percent</u>
Undergraduate	7,881	88.1%
Graduate	1,060	11.9%
<b>Total</b>	<b>8,941</b>	<b>100.0%</b>

## Fall 2010 Full-Time Equivalent Enrollment by Level

	<u>SCH's</u>	<u>FTE</u>	<u>Percent</u>
Undergraduate	104,870	8,739.2 (12 hours)	91.4%
Graduate	7,433	825.9 (9 hours)	8.6%
<b>Total</b>	<b>112,303</b>	<b>9,565.1</b>	<b>100.0%</b>

## Fall 2010 Enrollment by Rank

	<u>Enrollment</u>	<u>Percent</u>
Early Admissions	695	7.8%
Freshman	2,373	26.5%
Sophomore	1,421	15.9%
Junior	1,340	15.0%
Senior	2,023	22.6%
Masters Candidate	829	9.3%
Education Specialist	11	0.1%
Special Graduate	208	2.3%
Non-Credit/Non-Degree	41	0.5%
<b>Total</b>	<b>8,941</b>	<b>100.0%</b>

### Fall 2010 Enrollment by Full-Time/Part-Time Status

	<u>Undergraduate</u>	<u>Graduate</u>	<u>Total</u>	<u>Percent</u>
Full-Time	6,114	402	6,516	72.9%
Part-Time	1,767	658	2,425	27.1%
<b>Total</b>	<b>7,881</b>	<b>1,060</b>	<b>8,941</b>	<b>100.0%</b>

### Fall 2010 Enrollment by Current Entry Status

	<u>Undergraduate</u>	<u>Graduate</u>	<u>Total</u>	<u>Percent</u>
Early Admissions	695		695	7.8%
Continuing	5,138	784	5,922	66.2%
First-Time Freshmen	1,332		1,332	14.9%
New Graduate		197	197	2.2%
Re-Entry	329	53	382	4.3%
Transfer	365	23	388	4.3%
Other Undergraduate	7		7	0.1%
Visiting	15	3	18	0.2%
<b>Total</b>	<b>7,881</b>	<b>1,060</b>	<b>8,941</b>	<b>100.0%</b>

### Fall 2010 Enrollment by Gender

	<u>Undergraduate</u>	<u>Graduate</u>	<u>Total</u>	<u>Percent</u>
Female	4,772	738	5,510	61.6%
Male	3,109	322	3,431	38.4%
<b>Total</b>	<b>7,881</b>	<b>1,060</b>	<b>8,941</b>	<b>100.0%</b>

### Fall 2010 Enrollment by Ethnicity

	<u>Undergraduate</u>	<u>Graduate</u>	<u>Total</u>	<u>Percent</u>
Amer Indian/Alaska Native	49	5	54	0.61%
Asian	82	12	94	1.05%
Black	1,383	151	1,534	17.16%
Foreign	293	130	423	4.73%
Hawaiian or Pacific Isl	3		3	0.03%
Hispanic	140	19	159	1.78%
White	5,833	730	6,563	73.40%
Two or More Races	69	10	79	0.88%
Race/Ethnicity Unknown	29	3	32	0.36%
<b>Total</b>	<b>7,881</b>	<b>1,060</b>	<b>8,941</b>	<b>100.00%</b>

### Fall 2010 Enrollment by Gender and Ethnicity

	<b><u>Female</u></b>	<b><u>Male</u></b>	<b><u>Total</u></b>	<b><u>Percent</u></b>
Amer Indian/Alaska Native	38	16	54	0.61%
Asian	55	39	94	1.05%
Black	1,037	497	1,534	17.16%
Foreign	173	250	423	4.73%
Hawaiian or Pacific Isl		3	3	0.03%
Hispanic	99	60	159	1.78%
White	4,039	2,524	6,563	73.40%
Two or More Races	52	27	79	0.88%
Race/Ethnicity Unknown	17	15	32	0.36%
<b><i>Total</i></b>	<b><i>5,510</i></b>	<b><i>3,431</i></b>	<b><i>8,941</i></b>	<b><i>100.00%</i></b>

### Fall 2010 Undergraduate Enrollment by Gender and Ethnicity

	<b><u>Female</u></b>	<b><u>Male</u></b>	<b><u>Total</u></b>	<b><u>Percent</u></b>
Amer Indian/Alaska Native	33	16	49	0.62%
Asian	46	36	82	1.04%
Black	913	470	1,383	17.55%
Foreign	124	169	293	3.72%
Hawaiian or Pacific Isl		3	3	0.04%
Hispanic	84	56	140	1.78%
White	3,510	2,323	5,833	74.01%
Two or More Races	46	23	69	0.87%
Race/Ethnicity Unknown	16	13	29	0.37%
<b><i>Total</i></b>	<b><i>4,772</i></b>	<b><i>3,109</i></b>	<b><i>7,881</i></b>	<b><i>100.00%</i></b>

### Fall 2010 Graduate Enrollment by Gender and Ethnicity

	<b><u>Female</u></b>	<b><u>Male</u></b>	<b><u>Total</u></b>	<b><u>Percent</u></b>
Amer Indian/Alaska Native	5		5	0.5%
Asian	9	3	12	1.1%
Black	124	27	151	14.2%
Foreign	49	81	130	12.3%
Hispanic	15	4	19	1.8%
White	529	201	730	68.9%
Two or More Races	6	4	10	0.9%
Race/Ethnicity Unknown	1	2	3	0.3%
<b><i>Total</i></b>	<b><i>738</i></b>	<b><i>322</i></b>	<b><i>1,060</i></b>	<b><i>100.0%</i></b>

### Fall 2010 Undergraduate Enrollment by Rank and Ethnicity

	<u>EA</u>	<u>FR</u>	<u>SO</u>	<u>JR</u>	<u>SR</u>	<u>ND</u>	<u>Total</u>
Amer Indian/Alaska Native	7	15	4	7	16		49
Asian	8	26	8	18	21	1	82
Black	75	474	256	206	372		1,383
Foreign	1	75	49	70	92	6	293
Hawaiian or Pacific Isl		1	1	1			3
Hispanic	8	45	22	29	35	1	140
White	589	1,699	1,066	994	1,464	21	5,833
Two or More Races	4	29	13	8	15		69
Race/Ethnicity Unknown	3	9	2	7	8		29
<b>Total</b>	<b>695</b>	<b>2,373</b>	<b>1,421</b>	<b>1,340</b>	<b>2,023</b>	<b>29</b>	<b>7,881</b>

EA – Early Admissions  
FR- Freshman  
SO – Sophomore

JR – Junior  
SR – Senior  
ND – Non-Credit/Non-Degree

### Fall 2010 Graduate Enrollment by Rank and Ethnicity

	<u>MC</u>	<u>ES</u>	<u>SG</u>	<u>ND</u>	<u>Total</u>
Amer Indian/Alaska Native	2		3		5
Asian	9		3		12
Black	108	3	39	1	151
Foreign	127		3		130
Hispanic	18		1		19
White	555	8	156	11	730
Two or More Races	8		2		10
Race/Ethnicity Unknown	2		1		3
<b>Total</b>	<b>829</b>	<b>11</b>	<b>208</b>	<b>12</b>	<b>1,060</b>

MC – Masters Candidate  
ES – Education Specialist

SG – Special Graduate  
ND – Non-Credit/Non-Degree

### Fall 2010 Admissions Scores First-Time Full-Time Graduates

<u>Test</u>	<u>Average</u>
GMAT Total	499
GRE Combined Verbal/Quant	912

### Fall 2010 Enrollment by Age

	<u>Undergraduate</u>	<u>Graduate</u>	<u>Total</u>	<u>Percent</u>
Under 18	719		719	8.0%
18 – 19	2,093		2,093	23.4%
20 – 21	1,872	7	1,879	21.0%
22 – 24	1,430	265	1,695	19.0%
25 – 29	828	311	1,139	12.7%
30 – 34	391	182	573	6.4%
35 – 39	223	98	321	3.6%
40 – 49	231	131	362	4.1%
50 – 64	89	63	152	1.7%
Over 64	5	3	8	.1%
<b>Total</b>	<b>7,881</b>	<b>1,060</b>	<b>8,941</b>	<b>100.0%</b>

### Fall 2010 Enrollment by Age Group

	<u>Undergraduate</u>	<u>Graduate</u>	<u>Total</u>	<u>Percent</u>
Under 25	6,114	272	6,386	71.4%
25 and Older	1,767	788	2,555	28.6%
<b>Total</b>	<b>7,881</b>	<b>1,060</b>	<b>8,941</b>	<b>100.0%</b>

### Fall 2010 Average Age

	<u>Average Age</u>	<u>Median Age</u>
All Students	23.8	21
First-Time Freshmen	18.9	18
Undergraduate	22.8	21
Graduate	31.5	28



## Fall 2010 Enrollment by Parish of Origin

<u>Parish</u>	<u>Enrollment</u>		<u>Parish</u>	<u>Enrollment</u>
Acadia	250		St Landry	152
<b>Allen</b>	<b>332</b>		St Martin	43
Ascension	14		St Mary	31
Assumption	5		St Tammany	38
Avoyelles	19		Tangipahoa	11
<b>Beauregard</b>	<b>561</b>		Terrebonne	16
Bienville	2		Vermilion	124
Bossier	11		Vernon	143
Caddo	23		Washington	6
<b>Calcasieu</b>	<b>4,577</b>		Webster	4
<b>Cameron</b>	<b>235</b>		West Baton Rouge	5
Catahoula	1		West Carroll	2
Concordia	3		West Feliciana	9
DeSoto	4		Winn	2
East Baton Rouge	62			
East Feliciana	1		Total Louisiana	7,954
Evangeline	144		% of Total Enrollment	88.9%
Franklin	2		Number of Parishes	57
Grant	17			
Iberia	55			
Iberville	8		<b>Five Parish Total</b>	<b>6,313</b>
Jackson	1		<b>% of Total Enrollment</b>	<b>70.6%</b>
Jefferson	17			
<b>Jefferson Davis</b>	<b>608</b>			
Lafayette	155			
Lafourche	10			
LaSalle	3			
Lincoln	2			
Livingston	18			
Madison	2			
Morehouse	5			
Natchitoches	14			
Orleans	41			
Ouachita	24			
Plaquemines	2			
Pointe Coupee	40			
Rapides	61			
Richland	1			
Sabine	13			
St Bernard	3			
St Charles	12			
St James	5			
St John	5			

## Fall 2010 Enrollment by State of Origin

State	Enrollment
Alabama	3
Arizona	5
Arkansas	6
California	18
Colorado	2
Connecticut	1
Florida	13
Georgia	5
Idaho	2
Illinois	4
Indiana	5
Iowa	4
Kansas	2
Louisiana	7,954
Maryland	1
Michigan	1
Minnesota	4
Mississippi	15
Missouri	3
Nebraska	2
Nevada	2
New Hampshire	1
New Jersey	3
New Mexico	1
New York	4
North Carolina	3
Ohio	5
Oklahoma	6
Oregon	3
Rhode Island	2
South Carolina	5
Tennessee	3
Texas	376
Virginia	2
Washington	1
Wisconsin	3
Total	8,470
Total Out of State	516
% Out of State of Total Enrollment	5.8%
Number of States (Other than Louisiana)	35

## Fall 2010 Enrollment by Foreign Country of Origin

<u>Country</u>	<u>Enrollment</u>		<u>Country</u>	<u>Enrollment</u>
Azerbaijan	1		Thailand	9
Bangladesh	2		Togo	1
Benin	1		Tonga	1
Bolivia	8		Trinidad and Tobago	1
Brazil	1		Turkey	6
Bulgaria	1		Turkmenistan	1
Cameroon	1		Ukraine	3
Canada	4		United Kingdom	6
Chile	2		Venezuela	1
China	64		Vietnam	64
Colombia	12			
Costa Rica	1		Total Foreign	471
Cote d' Ivoire	1		% of Total Enrollment	5.3%
Croatia	2		Number of Countries (Other than USA)	54
Ecuador	6			
Equatorial Guinea	1			
Ethiopia	1			
France	6			
Germany	1			
Ghana	1			
Honduras	3			
India	74			
Indonesia	17			
Ireland	4			
Israel	1			
Jamaica	3			
Kenya	4			
Korea, Republic of	17			
Lithuania	1			
Mexico	9			
Mongolia	1			
Nepal	81			
Nigeria	12			
Pakistan	3			
Peru	5			
Philippines	4			
Romania	5			
Russia	3			
Saudi Arabia	1			
Serbia	2			
South Africa	2			
Sweden	1			
Syria	1			
Taiwan	7			

### Fall 2010 Undergraduate Enrollment by Residency

	<b><u>Full-Time</u></b>	<b><u>Part-Time</u></b>	<b><u>Total</u></b>	<b><u>Percent</u></b>
Louisiana	5,391	1,706	7,097	90.0%
Out of state	413	43	456	5.8%
Foreign	310	18	328	4.2%
<b><i>Total</i></b>	<b><i>6,114</i></b>	<b><i>1,767</i></b>	<b><i>7,881</i></b>	<b><i>100.0%</i></b>

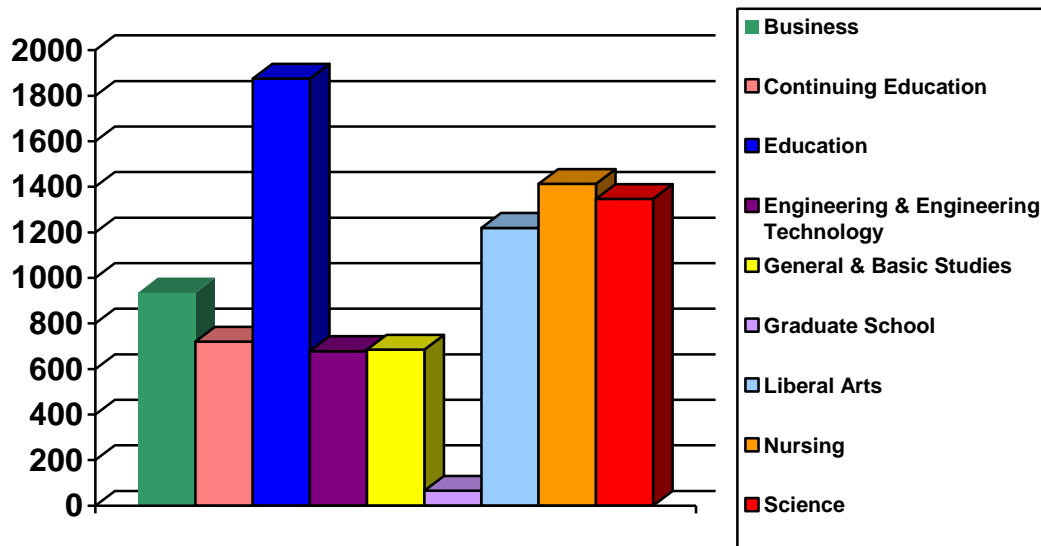
### Fall 2010 Graduate Enrollment by Residency

	<b><u>Full-Time</u></b>	<b><u>Part-Time</u></b>	<b><u>Total</u></b>	<b><u>Percent</u></b>
Louisiana	254	603	857	80.8%
Out of state	40	20	60	5.7%
Foreign	108	35	143	13.5%
<b><i>Total</i></b>	<b><i>402</i></b>	<b><i>658</i></b>	<b><i>1,060</i></b>	<b><i>100.0%</i></b>

This Page is Intentionally Left Blank

## Fall 2010 Enrollment by College

	<u>Undergraduate</u>	<u>Graduate</u>	<u>Total</u>	<u>Percent</u>
Business	849	87	936	10.5%
Continuing Education	709	11	720	8.0%
Education	1,239	636	1,875	21.0%
Engineering & Engineering Technology	624	55	679	7.6%
General & Basic Studies	685		685	7.7%
Graduate School		66	66	0.7%
Liberal Arts	1,185	35	1,220	13.6%
Nursing	1,329	84	1,413	15.8%
Science	1,261	86	1,347	15.1%
<b>Total</b>	<b>7,881</b>	<b>1,060</b>	<b>8,941</b>	<b>100.0%</b>



### Historical Fall Undergraduate Enrollment by College

	<u>2006</u>	<u>2007</u>	<u>2008</u>	<u>2009</u>	<u>2010</u>
Business	1,071	975	1,013	871	849
Continuing Education*	10	12	10	505	709
Education	1,218	1,168	1,143	1,214	1,239
Engineering & Engineering Technology	529	528	579	582	624
General & Basic Studies*	1,017	1,010	1,099	749	685
Liberal Arts	1,103	1,004	1,037	1,113	1,185
Nursing	1,133	1,139	1,181	1,244	1,329
Science	1,255	1,217	1,220	1,257	1,261
<b>Total</b>	<b>7,336</b>	<b>7,053</b>	<b>7,282</b>	<b>7,535</b>	<b>7,881</b>

\* In Fall 2009, Early Admissions was moved from General & Basic Studies to Continuing Education.

### Historical Fall Graduate Enrollment by College

	<u>2006</u>	<u>2007</u>	<u>2008</u>	<u>2009</u>	<u>2010</u>
Business	74	80	99	105	87
Continuing Education	16	20	12	11	11
Education	570	576	567	622	636
Engineering & Engineering Technology	78	100	71	80	55
Graduate School	96	54	77	71	66
Liberal Arts	34	34	38	34	35
Nursing	58	82	88	89	84
Science	81	96	60	98	86
<b>Total</b>	<b>1,007</b>	<b>1,042</b>	<b>1,012</b>	<b>1,110</b>	<b>1,060</b>

## Fall 2010 Enrollment by College and Department

<b>College</b>	<b>Department Name</b>	<b>Undergraduate</b>	<b>Graduate</b>	<b>Total</b>
Business	Accounting, Fin, & Economics	348		348
	Mgmt, Marketing and Bus Admin	501	87	588
<b>College of Business Total</b>		<b>849</b>	<b>87</b>	<b>936</b>
Continuing Education	Continuing Education	709	11	720
<b>Continuing Education Total</b>		<b>709</b>	<b>11</b>	<b>720</b>
Education	Educ Leadership & Instr Tech	30	126	156
	Health & Human Performance	436	48	484
	Psychology	245	75	320
	Teacher Education	528	387	915
<b>College of Education Total</b>		<b>1,239</b>	<b>636</b>	<b>1,875</b>
Engineering & Engineering Technology	Engineering	489	55	544
	Engineering Technology	135		135
<b>College of Engineering &amp; Engineering Technology Total</b>		<b>624</b>	<b>55</b>	<b>679</b>
General & Basic Studies	Basic Studies	685		685
<b>General &amp; Basic Studies Total</b>		<b>685</b>		<b>685</b>
Graduate School	Graduate School		66	66
<b>Graduate School Total</b>			<b>66</b>	<b>66</b>
Liberal Arts	English & Foreign Languages	173	34	207
	History	154		154
	Mass Communication	175		175
	Performing Arts	131	1	132
	Social Sciences	372		372
	Visual Arts	180		180
<b>College of Liberal Arts Total</b>		<b>1,185</b>	<b>35</b>	<b>1,220</b>
Nursing	Graduate Nursing		84	84
	Undergraduate Nursing	1,329		1,329
<b>College of Nursing Total</b>		<b>1,329</b>	<b>84</b>	<b>1,413</b>
Science	Agriculture	307	34	341
	Biology & Health Sciences	533		533
	Chemistry	90	14	104
	Math, Computer Science, & Stat	190	38	228
	Nutrition and Family Studies	123		123
	Physics	18		18
<b>College of Science Total</b>		<b>1,261</b>	<b>86</b>	<b>1,347</b>
<b>University Total</b>		<b>7,881</b>	<b>1,060</b>	<b>8,941</b>



## Fall 2010 Undergraduate Enrollment by College and Department

<u>College</u>	<u>Department Name</u>	<u>Full-Time</u>	<u>Part-Time</u>	<u>Total</u>
Business	Accounting, Fin, & Economics	303	45	348
	Mgmt, Marketing and Bus Admin	448	53	501
<b><i>College of Business Total</i></b>		<b>751</b>	<b>98</b>	<b>849</b>
Continuing Education	Continuing Education		709	709
<b><i>Continuing Education Total</i></b>			<b>709</b>	<b>709</b>
Education	Educ Leadership & Instr Tech	29	1	30
	Health & Human Performance	404	32	436
	Psychology	225	20	245
	Teacher Education	446	82	528
<b><i>College of Education Total</i></b>		<b>1,104</b>	<b>135</b>	<b>1,239</b>
Engineering & Engineering Technology	Engineering	441	48	489
	Engineering Technology	105	30	135
<b><i>College of Engineering &amp; Engineering Technology Total</i></b>		<b>546</b>	<b>78</b>	<b>624</b>
General & Basic Studies	Basic Studies	538	147	685
<b><i>General &amp; Basic Studies Total</i></b>		<b>538</b>	<b>147</b>	<b>685</b>
Liberal Arts	English & Foreign Languages	150	23	173
	History	134	20	154
	Mass Communication	167	8	175
	Performing Arts	120	11	131
	Social Sciences	323	49	372
	Visual Arts	152	28	180
<b><i>College of Liberal Arts Total</i></b>		<b>1,046</b>	<b>139</b>	<b>1,185</b>
Nursing	Undergraduate Nursing	1,015	314	1,329
<b><i>College of Nursing Total</i></b>		<b>1,015</b>	<b>314</b>	<b>1,329</b>
Science	Agriculture	284	23	307
	Biology & Health Sciences	478	55	533
	Chemistry	80	10	90
	Math, Computer Science, & Stat	161	29	190
	Nutrition and Family Studies	95	28	123
	Physics	16	2	18
<b><i>College of Science Total</i></b>		<b>1,114</b>	<b>147</b>	<b>1,261</b>
<b>University Total</b>		<b>6,114</b>	<b>1,767</b>	<b>7,881</b>

## Fall 2010 Graduate Enrollment by College and Department

<u>College</u>	<u>Department Name</u>	<u>Full-Time</u>	<u>Part-Time</u>	<u>Total</u>
Business	Mgmt, Marketing and Bus Admin	54	33	87
<b><i>College of Business Total</i></b>		<b>54</b>	<b>33</b>	<b>87</b>
Continuing Education	Continuing Education		11	11
<b><i>Continuing Education Total</i></b>			<b>11</b>	<b>11</b>
Education	Educ Leadership & Instr Tech	14	112	126
	Health & Human Performance	42	6	48
	Psychology	46	29	75
	Teacher Education	105	282	387
<b><i>College of Education Total</i></b>		<b>207</b>	<b>429</b>	<b>636</b>
Engineering & Engineering Technology	Engineering	37	18	55
<b><i>College of Engineering &amp; Engineering Technology Total</i></b>		<b>37</b>	<b>18</b>	<b>55</b>
Graduate School	Graduate School	13	53	66
<b><i>Graduate School Total</i></b>		<b>13</b>	<b>53</b>	<b>66</b>
Liberal Arts	English & Foreign Languages	25	9	34
	Performing Arts		1	1
<b><i>College of Liberal Arts Total</i></b>		<b>25</b>	<b>10</b>	<b>35</b>
Nursing	Graduate Nursing	8	76	84
<b><i>College of Nursing Total</i></b>		<b>8</b>	<b>76</b>	<b>84</b>
Science	Agriculture	21	13	34
	Chemistry	12	2	14
	Math, Computer Science, & Stat	25	13	38
<b><i>College of Science Total</i></b>		<b>58</b>	<b>28</b>	<b>86</b>
<b>University Total</b>		<b>402</b>	<b>658</b>	<b>1,060</b>

## Historical Fall Undergraduate Enrollment by College and Department

<b>College</b>	<b>Department Name</b>	<b>2006</b>	<b>2007</b>	<b>2008</b>	<b>2009</b>	<b>2010</b>
Business	Accounting, Fin, & Economics	370	335	349	342	348
	Mgmt, Marketing and Gen Bus	701	640	664	529	501
<b>College of Business Total</b>		<b>1,071</b>	<b>975</b>	<b>1,013</b>	<b>871</b>	<b>849</b>
Continuing Education	Continuing Education	10	12	10	505	709
<b>Continuing Education Total</b>		<b>10</b>	<b>12</b>	<b>10</b>	<b>505</b>	<b>709</b>
Education	Educ Leadership & Instr Tech	21	20	20	29	30
	Health & Human Performance	368	381	394	418	436
	Psychology	233	244	238	241	245
	Teacher Education	596	523	491	526	528
<b>College of Education Total</b>		<b>1,218</b>	<b>1,168</b>	<b>1,143</b>	<b>1,214</b>	<b>1,239</b>
Engineering & Engineering Technology	Engineering	361	372	409	430	489
	Engineering Technology	168	156	170	152	135
<b>College of Engineering &amp; Engineering Technology Total</b>		<b>529</b>	<b>528</b>	<b>579</b>	<b>582</b>	<b>624</b>
General & Basic Studies	Basic Studies	1,017	1,010	1,099	749	685
<b>Gen &amp; Basic Studies Total</b>		<b>1,017</b>	<b>1,010</b>	<b>1,099</b>	<b>749</b>	<b>685</b>
Liberal Arts	English & Foreign Languages	135	131	141	134	173
	History	129	132	129	150	154
	Mass Communication	186	154	164	164	175
	Performing Arts	110	99	104	120	131
	Social Sciences	369	317	327	367	372
	Visual Arts	174	171	172	178	180
<b>College of Liberal Arts Total</b>		<b>1,103</b>	<b>1,004</b>	<b>1,037</b>	<b>1,113</b>	<b>1,185</b>
Nursing	Undergraduate Nursing	1,133	1,139	1,181	1,244	1,329
<b>College of Nursing Total</b>		<b>1,133</b>	<b>1,139</b>	<b>1,181</b>	<b>1,244</b>	<b>1,329</b>
Science	Agriculture*	214	225	236	305	307
	Biological & Envr Sciences*	619	608	600		
	Biology & Health Sciences*				532	533
	Chemistry	102	91	108	111	90
	Math, Computer Science, & Stat	164	165	170	180	190
	Nutrition and Family Studies	145	118	97	110	123
	Physics	11	10	9	19	18
<b>College of Science Total</b>		<b>1,255</b>	<b>1,217</b>	<b>1,220</b>	<b>1,257</b>	<b>1,261</b>
<b>University Total</b>		<b>7,336</b>	<b>7,053</b>	<b>7,282</b>	<b>7,535</b>	<b>7,881</b>

\*In Fall 2009 Environmental Science enrollment was moved from Biological & Environmental Sciences to Agriculture.

## Historical Fall Graduate Enrollment by College and Department

<b>College</b>	<b>Department Name</b>	<b>2006</b>	<b>2007</b>	<b>2008</b>	<b>2009</b>	<b>2010</b>
Business	Mgmt, Marketing and Gen Bus	74	80	99	105	87
<b><i>College of Business Total</i></b>		<b>74</b>	<b>80</b>	<b>99</b>	<b>105</b>	<b>87</b>
Continuing Education	Continuing Education	16	20	12	11	11
<b><i>Continuing Education Total</i></b>		<b>16</b>	<b>20</b>	<b>12</b>	<b>11</b>	<b>11</b>
Education	Educ Leadership & Instr Tech	138	117	115	124	126
	Health & Human Performance	26	26	39	46	48
	Psychology	53	67	63	64	75
	Teacher Education	353	366	350	388	387
<b><i>College of Education Total</i></b>		<b>570</b>	<b>576</b>	<b>567</b>	<b>622</b>	<b>636</b>
Engineering & Engineering Tech	Engineering	78	100	71	80	55
<b><i>College of Engineering &amp; Engineering Technology Total</i></b>		<b>78</b>	<b>100</b>	<b>71</b>	<b>80</b>	<b>55</b>
Graduate School	Graduate School	96	54	77	71	66
<b><i>Graduate School Total</i></b>		<b>96</b>	<b>54</b>	<b>77</b>	<b>71</b>	<b>66</b>
Liberal Arts	English & Foreign Languages	28	28	33	30	34
	Performing Arts	6	6	5	4	1
<b><i>College of Liberal Arts Total</i></b>		<b>34</b>	<b>34</b>	<b>38</b>	<b>34</b>	<b>35</b>
Nursing	Graduate Nursing	58	82	88	89	84
<b><i>College of Nursing Total</i></b>		<b>58</b>	<b>82</b>	<b>88</b>	<b>89</b>	<b>84</b>
Science	Agriculture*	7	8	11	25	34
	Biological & Envr Sciences*	9	7	9		
	Chemistry	19	11	14	18	14
	Math, Computer Science, & Stat	38	62	26	55	38
	Nutrition and Family Studies	8	8			
<b><i>College of Science Total</i></b>		<b>81</b>	<b>96</b>	<b>60</b>	<b>98</b>	<b>86</b>
<b>University Total</b>		<b>1,007</b>	<b>1,042</b>	<b>1,012</b>	<b>1,110</b>	<b>1,060</b>

\*In Fall 2009 Environmental Science enrollment was moved from Biological & Environmental Sciences to Agriculture.

### Fall 2010 Enrollment by Department and Major

<u>College/Department</u>	<u>Major</u>	<u>Undergraduate</u>	<u>Graduate</u>	<u>Total</u>
<b>Business</b>				
Accounting, Fin & Economics	Accounting	256		256
	Finance	92		92
<i>Department Total</i>		<b>348</b>		<b>348</b>
Mgmt, Marketing, & Gen Bus	Business Administration		87	87
	Gen Business Administration	196		196
	Management	190		190
	Marketing	111		111
	Undeclared	4		4
<i>Department Total</i>		<b>501</b>	<b>87</b>	<b>588</b>
<b>College of Business Total</b>		<b>849</b>	<b>87</b>	<b>936</b>
<b>Continuing Education</b>				
Continuing Education	EASE Program	14	11	25
	Undeclared	695		695
<i>Department Total</i>		<b>709</b>	<b>11</b>	<b>720</b>
<b>Continuing Education Total</b>		<b>709</b>	<b>11</b>	<b>720</b>
<b>Education</b>				
Educ Leadership & Instr Tech	Business Education – Grades 6-12	30		30
	Educational Leadership		85	85
	Educational Technology Leadership		17	17
	Instructional Technology		24	24
<i>Department Total</i>		<b>30</b>	<b>126</b>	<b>156</b>
Health & Human Performance	Athletic Training	72		72
	Health & Human Performance		48	48
	Health & Human Performance, Education	6		6
	Health & Human Performance, General	204		204
	Health & Physical Education, Gr K-12	153		153
	Undeclared	1		1
<i>Department Total</i>		<b>436</b>	<b>48</b>	<b>484</b>
Psychology	Psychology	245	75	320
<i>Department Total</i>		<b>245</b>	<b>75</b>	<b>320</b>

### Fall 2010 Enrollment by Department and Major (continued)

<u>College/Department</u>	<u>Major</u>	<u>Undergraduate</u>	<u>Graduate</u>	<u>Total</u>
Teacher Education	Add-on Teacher Certification		10	10
	Alt Certification – Grades 1-12 Mild/Moderate Sp Ed		22	22
	Alt Certification – Grades K-12 Health & Physical Ed		9	9
	Alt Certification – Grades 1-5		47	47
	Alt Certification – Grade 6-12		32	32
	Alt Certification – K-12 Art Ed		4	4
	Alt Certification – Grades PK-3		19	19
	Curriculum and Instruction		12	12
	Early Childhood Education	1		1
	Early Childhood Educ – Grades PK- 3	237		237
	Elementary Education – Grades 1–5	270	74	344
	School Counseling		31	31
	Secondary Education	1		1
	Secondary Education Grades 6-12		94	94
	Special Education, Mild/Mod Gr 1-12		25	25
	Special Education		8	8
	Special Education, General	19		19
<i>Department Total</i>		<i>528</i>	<i>387</i>	<i>915</i>
<i>College of Education Total</i>		<i>1,239</i>	<i>636</i>	<i>1,875</i>
<b>Engineering &amp; Engineering Technology</b>				
Engineering	Engineering	487	55	542
	Undeclared	2		2
<i>Department Total</i>		<i>489</i>	<i>55</i>	<i>544</i>
Engineering Technology	Engineering Technology	135		135
<i>Department Total</i>		<i>135</i>		<i>135</i>
<i>College of Engineering &amp; Engineering Technology Total</i>		<i>624</i>	<i>55</i>	<i>679</i>
<b>General &amp; Basic Studies</b>				
Basic Studies	Basic Studies	199		199
	General Studies	480		480
	Undeclared	6		6
<i>Department Total</i>		<i>685</i>		<i>685</i>
<i>General &amp; Basic Studies Total</i>		<i>685</i>		<i>685</i>

## Fall 2010 Enrollment by Department and Major (continued)

<u>College/Department</u>	<u>Major</u>	<u>Undergraduate</u>	<u>Graduate</u>	<u>Total</u>
<b>Graduate School</b>				
Graduate School	Non-degree		66	66
<i>Department Total</i>			66	66
<b>Graduate School Total</b>			<b>66</b>	<b>66</b>
<b>Liberal Arts</b>				
English & Foreign Languages	Creative Writing		19	19
	English	66	15	81
	English Education Grades 6 – 12	76		76
	Foreign Language Education Gr 6-12	9		9
	Foreign Languages	9		9
	French	2		2
	Spanish	11		11
<i>Department Total</i>		173	34	207
History	History	56		56
	Liberal Studies	29		29
	Social Studies Education Gr 6 – 12	68		68
	Undeclared	1		1
<i>Department Total</i>		154		154
Mass Communication	Communication Studies	8		8
	Mass Communication	162		162
	Speech	2		2
	Speech Education Grades 6-12	3		3
<i>Department Total</i>		175		175
Performing Arts	Music Education	1	1	2
	Music Educ–Instrumental, Gr K–12	55		55
	Music Education – Vocal, Gr 6 – 12	23		23
	Music Performance	32		32
	Theatre Arts	20		20
<i>Department Total</i>		131	1	132
Social Sciences	Criminal Justice	174		174
	Criminal Justice Online	62		62
	General Studies	4		4
	Government	32		32
	Paralegal Studies	34		34
	Sociology	66		66
<i>Department Total</i>		372		372

### Fall 2010 Enrollment by Department and Major (continued)

<u>College/Department</u>	<u>Major</u>	<u>Undergraduate</u>	<u>Graduate</u>	<u>Total</u>
Visual Arts	Art	138		138
	Art Education	4		4
	Art Education – Grades K – 12	38		38
<i>Department Total</i>		<i>180</i>		<i>180</i>
<b><i>College of Liberal Arts Total</i></b>		<b><i>1,185</i></b>	<b><i>35</i></b>	<b><i>1,220</i></b>
<b>Nursing</b>				
Graduate Nursing	Nursing		84	84
<i>Department Total</i>			<i>84</i>	<i>84</i>
Undergraduate Nursing	Nursing	1,307		1,307
	Nursing Online Program	22		22
<i>Department Total</i>		<i>1,329</i>		<i>1,329</i>
<b><i>College of Nursing Total</i></b>		<b><i>1,329</i></b>	<b><i>84</i></b>	<b><i>1,413</i></b>
<b>Science</b>				
Agriculture	Agricultural Education – Grs 6 – 12	18		18
	Agricultural Sciences	214		214
	Environmental & Chemical Sciences		34	34
	Environmental Science	7		7
	Environmental Science Education Grades 6-12	1		1
	Natural Resource Conservation Mgmt	47		47
	Wildlife Management	20		20
<i>Department Total</i>		<i>307</i>	<i>34</i>	<i>341</i>
Biology & Health Sciences	Biological Science	250		250
	Biology Education – Grades 6 – 12	17		17
	Clinical Laboratory Science	54		54
	Radiologic Technology	212		212
<i>Department Total</i>		<i>533</i>		<i>533</i>
Chemistry	Chemistry	89		89
	Chemistry Education – Grades 6-12	1		1
	Environmental & Chemical Sciences		14	14
<i>Department Total</i>		<i>90</i>	<i>14</i>	<i>104</i>



### Fall 2010 Enrollment by Department and Major (continued)

<u>College/Department</u>	<u>Major</u>	<u>Undergraduate</u>	<u>Graduate</u>	<u>Total</u>
Math, Computer Sci and Stat	Computer Information Tech	25		25
	Computer Science	94		94
	Mathematical Sciences		38	38
	Mathematics	30		30
	Mathematics Education – Grades 6-12	41		41
<i>Department Total</i>		<i>190</i>	<i>38</i>	<i>228</i>
Nutrition & Family Studies	Family & Consumer Sciences	96		96
	Family & Consumer Sciences Education Grades 6-12	2		2
	Family & Consumer Sciences Online	19		19
	General Studies	5		5
	Undeclared	1		1
<i>Department Total</i>		<i>123</i>		<i>123</i>
Physics	Physics	18		18
<i>Department Total</i>		<i>18</i>		<i>18</i>
<b><i>College of Science Total</i></b>		<b><i>1,261</i></b>	<b><i>86</i></b>	<b><i>1,347</i></b>
<b>University Total</b>		<b>7,881</b>	<b>1,060</b>	<b>8,941</b>

Undergraduates taking developmental classes	640	7.2%
---	-----	------

### Historical Fall Enrollment Data Since 1939

<u>Fall</u>	<u>Under-graduate</u>	<u>Graduate</u>	<u>Total</u>		<u>Fall</u>	<u>Under-graduate</u>	<u>Graduate</u>	<u>Total</u>
<b>2010</b>	7,881	1,060	8,941		<b>1974</b>	4,841	845	5,686
<b>2009</b>	7,535	1,110	8,645		<b>1973</b>	4,922	915	5,837
<b>2008</b>	7,282	1,012	8,294		<b>1972</b>	5,226	959	6,185
<b>2007</b>	7,053	1,042	8,095		<b>1971</b>	5,067	958	6,025
<b>2006</b>	7,336	1,007	8,343		<b>1970</b>	4,844	750	5,594
<b>2005</b>	7,847	1,145	8,992		<b>1969</b>	4,568	582	5,150
<b>2004</b>	7,724	1,060	8,784		<b>1968</b>	4,618	472	5,090
<b>2003</b>	7,330	1,117	8,447		<b>1967</b>	4,234	308	4,542
<b>2002</b>	7,010	1,019	8,029		<b>1966</b>	3,983	333	4,316
<b>2001</b>	6,845	935	7,780		<b>1965</b>	3,512	295	3,807
<b>2000</b>	6,731	901	7,632		<b>1964</b>	3,149	211	3,360
<b>1999</b>	6,865	1,014	7,879		<b>1963</b>	2,663	164	2,827
<b>1998</b>	6,978	1,017	7,995		<b>1962</b>	2,999	132	3,131
<b>1997</b>	7,050	1,087	8,137		<b>1961</b>	2,848	98	2,946
<b>1996</b>	7,063	1,024	8,087		<b>1960</b>	2,697		2,697
<b>1995</b>	7,381	1,063	8,444		<b>1959</b>	2,502		2,502
<b>1994</b>	7,658	1,071	8,729		<b>1958</b>	2,444		2,444
<b>1993</b>	7,347	1,057	8,404		<b>1957</b>	2,024		2,024
<b>1992</b>	7,316	1,158	8,474		<b>1956</b>	1,916		1,916
<b>1991</b>	6,818	1,013	7,831		<b>1955</b>	1,661		1,661
<b>1990</b>	6,662	1,062	7,724		<b>1954</b>	1,367		1,367
<b>1989</b>	6,557	1,022	7,579		<b>1953</b>	1,192		1,192
<b>1988</b>	6,383	1,040	7,423		<b>1952</b>	993		993
<b>1987</b>	6,457	1,036	7,493		<b>1951</b>	905		905
<b>1986</b>	6,430	950	7,380		<b>1950</b>	501		501
<b>1985</b>	6,650	1,174	7,824		<b>1949</b>	397		397
<b>1984</b>	6,645	1,336	7,981		<b>1948</b>	575		575
<b>1983</b>	6,491	1,535	8,026		<b>1947</b>	615		615
<b>1982</b>	5,888	1,463	7,351		<b>1946</b>	640		640
<b>1981</b>	5,461	1,556	7,017		<b>1945</b>	233		233
<b>1980</b>	4,700	691	5,391		<b>1944</b>	131		131
<b>1979</b>	4,435	721	5,156		<b>1943</b>	146		146
<b>1978</b>	4,626	750	5,376		<b>1942</b>	169		169
<b>1977</b>	4,883	642	5,525		<b>1941</b>	223		223
<b>1976</b>	5,048	758	5,806		<b>1940</b>	242		242
<b>1975</b>	5,058	955	6,013		<b>1939</b>	254		254

This Page is Intentionally Left Blank

## First-Time Freshmen

### Fall 2010 First-Time Freshmen by Full-Time/Part-Time Status

	<b>Total</b>	<b>Percent</b>
Full-Time	1,267	95.1%
Part-Time	65	4.9%
<b>Total</b>	<b>1,332</b>	<b>100.0%</b>

### Fall 2010 First-Time Freshmen by Gender

	<b>Full-Time</b>	<b>Part-Time</b>	<b>Total</b>	<b>Percent</b>
Female	760	33	793	59.5%
Male	507	32	539	40.5%
<b>Total</b>	<b>1,267</b>	<b>65</b>	<b>1,332</b>	<b>100.0%</b>

### Fall 2010 First-Time Freshmen by Ethnicity

	<b>Full-Time</b>	<b>Part-Time</b>	<b>Total</b>	<b>Percent</b>
Amer Indian/Alaska Native	6		6	0.5%
Asian	10	1	11	0.8%
Black	225	19	244	18.3%
Foreign	31		31	2.3%
Hispanic	24	3	27	2.0%
White	950	39	989	74.3%
Two or more races	17	3	20	1.5%
Race/Ethnicity Unknown	4		4	0.3%
<b>Total</b>	<b>1,267</b>	<b>65</b>	<b>1,332</b>	<b>100.0%</b>

### Fall 2010 First-Time Freshmen Admissions

	<b>Total</b>
Applied	2,778
Accepted	1,903
Enrolled Full-Time	1,267
Enrolled Part-Time	65

### ACT Class Profile

#### First-Time Full-Time Degree Seeking Freshman

	<b>Avg ACT</b>
Fall 2009	21.3
Fall 2008	20.6

### Fall 2010 First-Time Freshmen by Parish of Origin

Parish	Enrollment	Parish	Enrollment
Acadia	42		
Allen	37	Total Louisiana	1,213
Ascension	2	% of Total FTF	91.1%
Assumption	1	Number of Parishes	43
Beauregard	94		
Bienville	1		
Bossier	1	Five Parish Total	946
Caddo	6	% of Total FTF	71.0%
Calcasieu	676		
Cameron	43		
Catahoula	1		
Concordia	1		
East Baton Rouge	18		
Evangeline	23		
Grant	10		
Iberia	18		
Iberville	1		
Jefferson	2		
Jefferson Davis	96		
Lafayette	24		
Lafourche	4		
Lincoln	1		
Livingston	2		
Morehouse	1		
Natchitoches	3		
Orleans	8		
Ouachita	3		
Rapides	11		
Sabine	1		
St Charles	1		
St John	1		
St Landry	16		
St Martin	7		
St Mary	4		
St Tammany	7		
Tangipahoa	2		
Terrebonne	2		
Vermilion	15		
Vernon	19		
Webster	3		
West Baton Rouge	1		
West Feliciana	3		
Winn	1		

## Fall 2010 First-Time Freshmen by State of Origin

State	Enrollment
Alabama	2
Arizona	2
California	3
Florida	4
Kansas	1
Louisiana	1,213
Mississippi	1
Nebraska	1
New Hampshire	1
New Jersey	1
North Carolina	1
South Carolina	1
Texas	68
Total	1,299
Total Out of State	86
% of Total FTF	6.4%
Number of States (Other than Louisiana)	12

### Fall 2010 First-Time Freshmen by Foreign Country of Origin

<u>Country</u>	<u>Enrollment</u>
Bangladesh	1
Canada	2
China	7
Colombia	1
Mexico	2
Nepal	5
Nigeria	2
Peru	1
Sweden	1
Taiwan	1
Turkey	2
United Kingdom	1
Vietnam	7
<b>Total Foreign</b>	<b>33</b>
<b>% of Total FTF</b>	<b>2.5%</b>
<b>Number of Countries (Other than USA)</b>	<b>13</b>

### Fall 2010 First-Time Freshmen by Residency

	<u>Full-Time</u>	<u>Part-Time</u>	<u>Total</u>	<u>Percent</u>
Louisiana	1,153	60	1,213	91.1%
Out of state	82	4	86	6.4%
Foreign	32	1	33	2.5%
<b>Total</b>	<b>1,267</b>	<b>65</b>	<b>1,332</b>	<b>100.0%</b>

### Fall 2010 First-Time Freshmen Enrollment by College

	<b>Full-Time</b>	<b>Part-Time</b>	<b>Total</b>	<b>Percent</b>
Business	111	5	116	8.7%
Education	190	4	194	14.6%
Engineering & Engineering Technology	134	2	136	10.2%
General & Basic Studies	147	27	174	13.1%
Liberal Arts	164	7	171	12.8%
Nursing	253	14	267	20.0%
Science	268	6	274	20.6%
<b>Total</b>	<b>1,267</b>	<b>65</b>	<b>1,332</b>	<b>100.0%</b>

### Historical Fall First-Time Freshmen Enrollment by College

	<b>2006</b>	<b>2007</b>	<b>2008</b>	<b>2009</b>	<b>2010</b>
Business	134	125	150	104	116
Continuing Education	3	3			
Education	164	167	192	195	194
Engineering & Engineering Technology	105	125	116	114	136
General & Basic Studies	272	251	187	217	174
Liberal Arts	153	139	181	173	171
Nursing	212	212	197	210	267
Science	276	279	319	304	274
<b>Total</b>	<b>1,319</b>	<b>1,301</b>	<b>1,342</b>	<b>1,317</b>	<b>1,332</b>



## Fall 2010 First-Time Freshmen by College and Department

<u>College</u>	<u>Department</u>	<u>Full-Time</u>	<u>Part-Time</u>	<u>Total</u>
Business	Accounting, Fin & Economics	36	2	38
	Mgmt, Marketing, & Bus Admin	75	3	78
<b><i>College of Business Total</i></b>		<b><i>111</i></b>	<b><i>5</i></b>	<b><i>116</i></b>
Education	Educ Leadership & Instr Tech	2		2
	Health & Human Performance	83	2	85
	Psychology	42		42
	Teacher Education	63	2	65
<b><i>College of Education Total</i></b>		<b><i>190</i></b>	<b><i>4</i></b>	<b><i>194</i></b>
Engineering & Engineering Technology	Engineering	119	2	121
	Engineering Technology	15		15
<b><i>College of Engineering &amp; Engineering Technology Total</i></b>		<b><i>134</i></b>	<b><i>2</i></b>	<b><i>136</i></b>
General & Basic Studies	Basic Studies	147	27	174
<b><i>General &amp; Basic Studies Total</i></b>		<b><i>147</i></b>	<b><i>27</i></b>	<b><i>174</i></b>
Liberal Arts	English & Foreign Languages	31	1	32
	History	21		21
	Mass Communication	19	2	21
	Performing Arts	40		40
	Social Sciences	37	2	39
	Visual Arts	16	2	18
<b><i>College of Liberal Arts Total</i></b>		<b><i>164</i></b>	<b><i>7</i></b>	<b><i>171</i></b>
Nursing	Undergraduate Nursing	253	14	267
<b><i>College of Nursing Total</i></b>		<b><i>253</i></b>	<b><i>14</i></b>	<b><i>267</i></b>
Science	Agriculture	64	2	66
	Biology & Health Sciences	131	2	133
	Chemistry	25		25
	Math, Computer Sci and Stat	34	2	36
	Nutrition & Family Studies	11		11
	Physics	3		3
<b><i>College of Science Total</i></b>		<b><i>268</i></b>	<b><i>6</i></b>	<b><i>274</i></b>
<b>University Total</b>		<b>1,267</b>	<b>65</b>	<b>1,332</b>

## Historical First-Time Freshmen Enrollment by College and Department

<b>College</b>	<b>Department Name</b>	<b>2006</b>	<b>2007</b>	<b>2008</b>	<b>2009</b>	<b>2010</b>
Business	Accounting, Fin, & Economics	39	46	42	28	38
	Mgmt, Marketing and Bus Admin	95	79	108	76	78
<b>College of Business Total</b>		<b>134</b>	<b>125</b>	<b>150</b>	<b>104</b>	<b>116</b>
Continuing Education	Continuing Education	3	3			
<b>Continuing Education Total</b>		<b>3</b>	<b>3</b>			
Education	Educ Leadership & Instr Tech	1	1	3	2	2
	Health & Human Performance	51	64	86	72	85
	Psychology	52	48	41	54	42
	Teacher Education	60	54	62	67	65
<b>College of Education Total</b>		<b>164</b>	<b>167</b>	<b>192</b>	<b>195</b>	<b>194</b>
Engineering & Engineering Technology	Engineering	85	100	92	100	121
	Engineering Technology	20	25	24	14	15
<b>College of Engineering &amp; Engineering Technology Total</b>		<b>105</b>	<b>125</b>	<b>116</b>	<b>114</b>	<b>136</b>
General & Basic Studies	Basic Studies	272	251	187	217	174
<b>General &amp; Basic Studies Total</b>		<b>272</b>	<b>251</b>	<b>187</b>	<b>217</b>	<b>174</b>
Liberal Arts	English & Foreign Languages	18	22	23	26	32
	History	16	13	11	17	21
	Mass Communication	28	17	35	21	21
	Performing Arts	26	22	38	35	40
	Social Sciences	42	37	54	51	39
	Visual Arts	23	28	20	23	18
<b>College of Liberal Arts Total</b>		<b>153</b>	<b>139</b>	<b>181</b>	<b>173</b>	<b>171</b>
Nursing	Undergraduate Nursing	212	212	197	210	267
<b>College of Nursing Total</b>		<b>212</b>	<b>212</b>	<b>197</b>	<b>210</b>	<b>267</b>
Science	Agriculture*	36	42	69	78	66
	Biological & Envr Sciences*	168	162	159		
	Biology & Health Sciences*				147	133
	Chemistry	16	28	39	34	25
	Math, Computer Science, & Stat	36	43	35	27	36
	Nutrition & Family Studies	15	4	13	12	11
	Physics	5		4	6	3
<b>College of Science Total</b>		<b>276</b>	<b>279</b>	<b>319</b>	<b>304</b>	<b>274</b>
<b>University Total</b>		<b>1,319</b>	<b>1,301</b>	<b>1,342</b>	<b>1,317</b>	<b>1,332</b>

\*In Spring 2009 Environmental Science was moved from Biological & Environmental Sciences to Agriculture.

## Fall 2010 First-Time Freshmen by Department and Major

<u>College/Department</u>	<u>Major</u>	<u>Full-Time</u>	<u>Part-Time</u>	<u>Total</u>
<b>Business</b>				
Accounting, Fin & Economics	Accounting	25	1	26
	Finance	11	1	12
<i>Department Total</i>		<b>36</b>	<b>2</b>	<b>38</b>
Mgmt, Marketing, & Bus Admin	Gen Business Administration	45	2	47
	Management	16		16
	Marketing	14	1	15
<i>Department Total</i>		<b>75</b>	<b>3</b>	<b>78</b>
<b>College of Business Total</b>		<b>111</b>	<b>5</b>	<b>116</b>
<b>Education</b>				
Educ Leadership & Instr Tech	Business Education – Grades 6-12	2		2
<i>Department Total</i>		<b>2</b>		<b>2</b>
Health & Human Performance	Athletic Training	21		21
	Health & Human Performance, General	44	2	46
	Health & Physical Education, Grades K–12	18		18
<i>Department Total</i>		<b>83</b>	<b>2</b>	<b>85</b>
Psychology	Psychology	42		42
<i>Department Total</i>		<b>42</b>		<b>42</b>
Teacher Education	Early Childhood Education–Grades PK–3	28	1	29
	Elementary Education – Grades 1–5	35	1	36
<i>Department Total</i>		<b>63</b>	<b>2</b>	<b>65</b>
<b>College of Education Total</b>		<b>190</b>	<b>4</b>	<b>194</b>
<b>Engineering &amp; Engineering Technology</b>				
Engineering	Engineering	119	2	121
<i>Department Total</i>		<b>119</b>	<b>2</b>	<b>121</b>
Engineering Technology	Engineering Technology	15		15
<i>Department Total</i>		<b>15</b>		<b>15</b>
<b>College of Engineering &amp; Engineering Technology Total</b>		<b>134</b>	<b>2</b>	<b>136</b>

### Fall 2010 First-Time Freshmen by Department and Major (continued)

<u>College/Department</u>	<u>Major</u>	<u>Full-Time</u>	<u>Part-Time</u>	<u>Total</u>
<b>General &amp; Basic Studies</b>				
Basic Studies	Basic Studies	138	26	164
	General Studies	9	1	10
<i>Department Total</i>		<i>147</i>	<i>27</i>	<i>174</i>
<b>General &amp; Basic Studies Total</b>		<b>147</b>	<b>27</b>	<b>174</b>
<b>Liberal Arts</b>				
English & Foreign Languages	English	6		6
	English Education Grades 6 – 12	20	1	21
	Foreign Languages	5		5
<i>Department Total</i>		<i>31</i>	<i>1</i>	<i>32</i>
History	History	8		8
	Liberal Studies	1		1
	Social Studies Education Grades 6 – 12	12		12
<i>Department Total</i>		<i>21</i>		<i>21</i>
Mass Communication	Mass Communication	19	2	21
<i>Department Total</i>		<i>19</i>	<i>2</i>	<i>21</i>
Performing Arts	Music Educ–Instrumental Grades K–12	21		21
	Music Education – Vocal Grades 6 – 12	7		7
	Music Performance	8		8
	Theatre Arts	4		4
<i>Department Total</i>		<i>40</i>		<i>40</i>
Social Sciences	Criminal Justice	26	2	28
	Government	7		7
	Paralegal Studies	2		2
	Sociology	2		2
<i>Department Total</i>		<i>37</i>	<i>2</i>	<i>39</i>
Visual Arts	Art	12	2	14
	Art Education – Grades K – 12	4		4
<i>Department Total</i>		<i>16</i>	<i>2</i>	<i>18</i>
<b>College of Liberal Arts Total</b>		<b>164</b>	<b>7</b>	<b>171</b>

### Fall 2010 First-Time Freshmen by Department and Major (continued)

<u>College/Department</u>	<u>Major</u>	<u>Full-Time</u>	<u>Part-Time</u>	<u>Total</u>
<b>Nursing</b>				
Undergraduate Nursing	Nursing	253	14	267
<i>Department Total</i>		<b>253</b>	<b>14</b>	<b>267</b>
<b>College of Nursing Total</b>		<b>253</b>	<b>14</b>	<b>267</b>
<b>Science</b>				
Agriculture	Agricultural Education, Grades 6 – 12	3	1	4
	Agricultural Sciences	50		50
	Natural Resource Conservation Mgmt	11	1	12
<i>Department Total</i>		<b>64</b>	<b>2</b>	<b>66</b>
Biology & Health Sciences	Biological Science	77		77
	Biology Education – Grades 6 – 12	2	1	3
	Clinical Laboratory Science	4		4
	Radiologic Sciences	48	1	49
<i>Department Total</i>		<b>131</b>	<b>2</b>	<b>133</b>
Chemistry	Chemistry	25		25
<i>Department Total</i>		<b>25</b>		<b>25</b>
Math, Computer Sci and Stat	Computer Information Tech	1		1
	Computer Science	17	2	19
	Mathematics	6		6
	Mathematics Education – Grades 6-12	10		10
<i>Department Total</i>		<b>34</b>	<b>2</b>	<b>36</b>
Nutrition & Family Studies	Family & Consumer Sciences	9		9
	Family & Consumer Sciences Online	1		1
	Family & Consumer Sci Ed – Gr 6-12	1		1
<i>Department Total</i>		<b>11</b>		<b>11</b>
Physics	Physics	3		3
<i>Department Total</i>		<b>3</b>		<b>3</b>
<b>College of Science Total</b>		<b>268</b>	<b>6</b>	<b>274</b>
<b>University Total</b>		<b>1,267</b>	<b>65</b>	<b>1,332</b>

## Transfers

### Fall 2010 Transfer Enrollment by Full-Time/Part-Time Status

	<u>Undergraduate</u>	<u>Graduate</u>	<u>Total</u>	<u>Percent</u>
Full-Time	299	8	307	79.1%
Part-Time	66	15	81	20.9%
<b>Total</b>	<b>365</b>	<b>23</b>	<b>388</b>	<b>100.0%</b>

### Fall 2010 Undergraduate Transfer Enrollment by College

	<u>Full-Time</u>	<u>Part-Time</u>	<u>Total</u>	<u>Percent</u>
Business	37	5	42	11.5%
Education	46	8	54	14.8%
Engineering & Engineering Technology	30	7	37	10.1%
General & Basic Studies	23	8	31	8.5%
Liberal Arts	53	2	55	15.1%
Nursing	54	27	81	22.2%
Science	56	9	65	17.8%
<b>Total</b>	<b>299</b>	<b>66</b>	<b>365</b>	<b>100.0%</b>

### Historical Fall Undergraduate Transfer Enrollment by College

	<u>2006</u>	<u>2007</u>	<u>2008</u>	<u>2009</u>	<u>2010</u>
Business	45	56	48	43	42
Education	51	42	56	65	54
Engineering & Engineering Technology	27	20	28	39	37
General & Basic Studies	32	23	39	52	31
Liberal Arts	40	36	40	73	55
Nursing	64	72	78	95	81
Science	62	74	61	55	65
<b>Total</b>	<b>321</b>	<b>323</b>	<b>350</b>	<b>422</b>	<b>365</b>

## Fall 2010 Undergraduate Transfers by College and Department

<u>College</u>	<u>Department</u>	<u>Full-Time</u>	<u>Part-Time</u>	<u>Total</u>
Business	Accounting, Fin & Economics	15	3	18
	Mgmt, Marketing, & Gen Bus	22	2	24
<b><i>College of Business Total</i></b>		<b>37</b>	<b>5</b>	<b>42</b>
Education	Health & Human Performance	24	1	25
	Psychology	10	2	12
	Teacher Education	12	5	17
<b><i>College of Education Total</i></b>		<b>46</b>	<b>8</b>	<b>54</b>
Engineering & Engineering Technology	Engineering	25	6	31
	Engineering Technology	5	1	6
<b><i>College of Engineering &amp; Engineering Technology Total</i></b>		<b>30</b>	<b>7</b>	<b>37</b>
General & Basic Studies	Basic Studies	23	8	31
<b><i>General &amp; Basic Studies Total</i></b>		<b>23</b>	<b>8</b>	<b>31</b>
Liberal Arts	English & Foreign Languages	8		8
	History	8		8
	Mass Communication	7	1	8
	Performing Arts	8		8
	Social Sciences	14	1	15
	Visual Arts	8		8
<b><i>College of Liberal Arts Total</i></b>		<b>53</b>	<b>2</b>	<b>55</b>
Nursing	Undergraduate Nursing	54	27	81
<b><i>College of Nursing Total</i></b>		<b>54</b>	<b>27</b>	<b>81</b>
Science	Agriculture	19	2	21
	Biology & Health Sciences	21	5	26
	Chemistry	1		1
	Math, Computer Sci and Stat	10	2	12
	Nutrition & Family Studies	3		3
	Physics	2		2
<b><i>College of Science Total</i></b>		<b>56</b>	<b>9</b>	<b>65</b>
<b>University Total</b>		<b>299</b>	<b>66</b>	<b>365</b>

## Fall 2010 Undergraduate Transfers by Department and Major

<u>College/Department</u>	<u>Major</u>	<u>Full-Time</u>	<u>Part-Time</u>	<u>Total</u>
<b>Business</b>				
Accounting, Fin & Economics	Accounting	8	2	10
	Finance	7	1	8
<i>Department Total</i>		<i>15</i>	<i>3</i>	<i>18</i>
Mgmt, Marketing, & Bus Admin	Gen Business Administration	7	2	9
	Management	12		12
	Marketing	3		3
<i>Department Total</i>		<i>22</i>	<i>2</i>	<i>24</i>
<b>College of Business Total</b>		<b>37</b>	<b>5</b>	<b>42</b>
<b>Education</b>				
Health & Human Performance	Athletic Training	5	1	6
	Health & Human Performance, General	10		10
	Health & Physical Education, Grades K–12	9		9
<i>Department Total</i>		<i>24</i>	<i>1</i>	<i>25</i>
Psychology	Psychology	10	2	12
<i>Department Total</i>		<i>10</i>	<i>2</i>	<i>12</i>
Teacher Education	Early Childhood Education–Grades PK–3	5	2	7
	Elementary Education – Grades 1–5	7	3	10
<i>Department Total</i>		<i>12</i>	<i>5</i>	<i>17</i>
<b>College of Education Total</b>		<b>46</b>	<b>8</b>	<b>54</b>
<b>Engineering &amp; Engineering Technology</b>				
Engineering	Engineering	25	6	31
<i>Department Total</i>		<i>25</i>	<i>6</i>	<i>31</i>
Engineering Technology	Engineering Technology	5	1	6
<i>Department Total</i>		<i>5</i>	<i>1</i>	<i>6</i>
<b>College of Engineering &amp; Engineering Technology Total</b>		<b>30</b>	<b>7</b>	<b>37</b>
<b>General &amp; Basic Studies</b>				
Basic Studies	Basic Studies	1		1
	General Studies	22	8	30
<i>Department Total</i>		<i>23</i>	<i>8</i>	<i>31</i>
<b>General &amp; Basic Studies Total</b>		<b>23</b>	<b>8</b>	<b>31</b>



**Fall 2010 Undergraduate Transfers by Department and Major (continued)**

<u>College/Department</u>	<u>Major</u>	<u>Full-Time</u>	<u>Part-Time</u>	<u>Total</u>
<b>Liberal Arts</b>				
English & Foreign Languages	English	3		3
	English Education – Grades 6-12	4		4
	Foreign Languages	1		1
<i>Department Total</i>		<b>8</b>		<b>8</b>
History	History	2		2
	Liberal Studies	1		1
	Social Studies Education Grades 6 – 12	5		5
<i>Department Total</i>		<b>8</b>		<b>8</b>
Mass Communication	Mass Communication	7	1	8
<i>Department Total</i>		<b>7</b>	<b>1</b>	<b>8</b>
Performing Arts	Music Educ–Instrumental Grades K–12	1		1
	Music Performance	2		2
	Theatre Arts	5		5
<i>Department Total</i>		<b>8</b>		<b>8</b>
Social Sciences	Criminal Justice	9	1	10
	Criminal Justice Online	4		4
	Sociology	1		1
<i>Department Total</i>		<b>14</b>	<b>1</b>	<b>15</b>
Visual Arts	Art	7		7
	Art Education – Grades K-12	1		1
<i>Department Total</i>		<b>8</b>		<b>8</b>
<b>College of Liberal Arts Total</b>		<b>53</b>	<b>2</b>	<b>55</b>
<b>Nursing</b>				
Undergraduate Nursing	Nursing	54	26	80
	Nursing Online		1	1
<i>Department Total</i>		<b>54</b>	<b>27</b>	<b>81</b>
<b>College of Nursing Total</b>		<b>54</b>	<b>27</b>	<b>81</b>
<b>Science</b>				
Agriculture	Agricultural Education - Grades 6-12	1		1
	Agricultural Sciences	15	1	16
	Natural Resource Conservation Mgmt	3	1	4
<i>Department Total</i>		<b>19</b>	<b>2</b>	<b>21</b>

**Fall 2010 Undergraduate Transfers by Department and Major (continued)**

<b><u>College/Department</u></b>	<b><u>Major</u></b>	<b><u>Full-Time</u></b>	<b><u>Part-Time</u></b>	<b><u>Total</u></b>
Biology & Health Sciences	Biological Science	5	1	6
	Biology Education – Grades 6-12	1		1
	Clinical Laboratory Science	2	1	3
	Radiologic Sciences	13	3	16
<i>Department Total</i>		<i>21</i>	<i>5</i>	<i>26</i>
Chemistry	Chemistry	1		1
<i>Department Total</i>		<i>1</i>		<i>1</i>
Math, Computer Sci and Stat	Computer Science	7	1	8
	Mathematics	1		1
	Mathematics Education – Grades 6-12	2	1	3
<i>Department Total</i>		<i>10</i>	<i>2</i>	<i>12</i>
Nutrition & Family Studies	Family & Consumer Sciences	3		3
<i>Department Total</i>		<i>3</i>		<i>3</i>
Physics	Physics	2		2
<i>Department Total</i>		<i>2</i>		<i>2</i>
<b><i>College of Science Total</i></b>		<b><i>56</i></b>	<b><i>9</i></b>	<b><i>65</i></b>
<b>University Total</b>		<b>299</b>	<b>66</b>	<b>365</b>

This Page is Intentionally Left Blank

# Spring Enrollment Spring 2011

## Spring 2011 Enrollment by Level

	<u>Enrollment</u>	<u>Percent</u>
Undergraduate	7,312	88.0%
Graduate	1,001	12.0%
<b>Total</b>	<b>8,313</b>	<b>100.0%</b>

## Spring 2011 Full-Time Equivalent Enrollment by Level

	<u>SCH's</u>	<u>FTE</u>	<u>Percent</u>
Undergraduate	98,308	8,192.3 (12 hours)	91.2%
Graduate	7,087	787.4 (9 hours)	8.8%
<b>Total</b>	<b>105,395</b>	<b>8,979.7</b>	<b>100.0%</b>

## Spring 2011 Enrollment by Rank

	<u>Enrollment</u>	<u>Percent</u>
Early Admissions	661	8.0%
Freshman	1,813	21.8%
Sophomore	1,434	17.2%
Junior	1,243	15.0%
Senior	2,143	25.8%
Masters Candidate	767	9.2%
Education Specialist	13	0.2%
Special Graduate	210	2.5%
Non-Credit/Non-Degree	29	0.3%
<b>Total</b>	<b>8,313</b>	<b>100.0%</b>

### Spring 2011 Enrollment by Full-Time/Part-Time Status

	<u>Undergraduate</u>	<u>Graduate</u>	<u>Total</u>	<u>Percent</u>
Full-Time	5,720	379	6,099	73.4%
Part-Time	1,592	622	2,214	26.6%
<b>Total</b>	<b>7,312</b>	<b>1,001</b>	<b>8,313</b>	<b>100.0%</b>

### Spring 2011 Enrollment by Current Entry Status

	<u>Undergraduate</u>	<u>Graduate</u>	<u>Total</u>	<u>Percent</u>
Early Admissions	661		661	7.95%
Continuing	6,043	780	6,823	82.08%
First-Time Freshmen	122		122	1.47%
New Graduate		149	149	1.79%
Other Undergraduate	3		3	0.03%
Re-Entry	246	44	290	3.49%
Transfer	229	28	257	3.09%
Visiting	8		8	0.10%
<b>Total</b>	<b>7,312</b>	<b>1,001</b>	<b>8,313</b>	<b>100.0%</b>

### Spring 2011 Enrollment by Gender

	<u>Undergraduate</u>	<u>Graduate</u>	<u>Total</u>	<u>Percent</u>
Female	4,431	687	5,118	61.6%
Male	2,881	314	3,195	38.4%
<b>Total</b>	<b>7,312</b>	<b>1,001</b>	<b>8,313</b>	<b>100.0%</b>

### Spring 2011 Enrollment by Ethnicity

	<u>Undergraduate</u>	<u>Graduate</u>	<u>Total</u>	<u>Percent</u>
Amer Indian/Alaska Native	43	2	45	0.54%
Asian	74	12	86	1.03%
Black	1,293	163	1,456	17.52%
Foreign	292	119	411	4.94%
Hawaiian or Pacific Isl	2		2	0.02%
Hispanic	122	20	142	1.71%
White	5,390	675	6,065	72.96%
Two or More Races	62	5	67	0.81%
Race/Ethnicity Unknown	34	5	39	0.47%
<b>Total</b>	<b>7,312</b>	<b>1,001</b>	<b>8,313</b>	<b>100.00%</b>

### Spring 2011 Enrollment by Gender and Ethnicity

	<u>Female</u>	<u>Male</u>	<u>Total</u>	<u>Percent</u>
Amer Indian/Alaska Native	30	15	45	0.54%
Asian	52	34	86	1.03%
Black	1,008	448	1,456	17.52%
Foreign	168	243	411	4.94%
Hawaiian or Pacific Isl		2	2	0.02%
Hispanic	89	53	142	1.71%
White	3,709	2,356	6,065	72.96%
Two or More Races	41	26	67	0.81%
Race/Ethnicity Unknown	21	18	39	0.47%
<b>Total</b>	<b>5,118</b>	<b>3,195</b>	<b>8,313</b>	<b>100.00%</b>

### Spring 2011 Undergraduate Enrollment by Gender and Ethnicity

	<u>Female</u>	<u>Male</u>	<u>Total</u>	<u>Percent</u>
Amer Indian/Alaska Native	28	15	43	0.59%
Asian	45	29	74	1.01%
Black	872	421	1,293	17.68%
Foreign	122	170	292	3.99%
Hawaiian or Pacific Isl		2	2	0.03%
Hispanic	74	48	122	1.67%
White	3,234	2,156	5,390	73.71%
Two or More Races	38	24	62	0.85%
Race/Ethnicity Unknown	18	16	34	0.47%
<b>Total</b>	<b>4,431</b>	<b>2,881</b>	<b>7,312</b>	<b>100.00%</b>

### Spring 2011 Graduate Enrollment by Gender and Ethnicity

	<u>Female</u>	<u>Male</u>	<u>Total</u>	<u>Percent</u>
Amer Indian/Alaska Native	2		2	0.2%
Asian	7	5	12	1.2%
Black	136	27	163	16.3%
Foreign	46	73	119	11.9%
Hispanic	15	5	20	2.0%
White	475	200	675	67.4%
Two or More Races	3	2	5	.5%
Race/Ethnicity Unknown	3	2	5	.5%
<b>Total</b>	<b>687</b>	<b>314</b>	<b>1,001</b>	<b>100.0%</b>

### Spring 2011 Undergraduate Enrollment by Rank and Ethnicity

	<u>EA</u>	<u>FR</u>	<u>SO</u>	<u>JR</u>	<u>SR</u>	<u>ND</u>	<u>Total</u>
Amer Indian/Alaska Native	2	10	4	7	20		43
Asian	8	20	10	9	27		74
Black	81	373	266	202	371		1,293
Foreign		82	50	57	103		292
Hawaiian or Pacific Isl			1		1		2
Hispanic	8	33	21	22	37	1	122
White	547	1,266	1,067	936	1,557	17	5,390
Two or More Races	6	22	13	5	16		62
Race/Ethnicity Unknown	9	7	2	5	11		34
<b>Total</b>	<b>661</b>	<b>1,813</b>	<b>1,434</b>	<b>1,243</b>	<b>2,143</b>	<b>18</b>	<b>7,312</b>

EA – Early Admissions  
FR- Freshman  
SO – Sophomore

JR – Junior  
SR – Senior  
ND – Non-Credit/Non-Degree

### Spring 2011 Graduate Enrollment by Rank and Ethnicity

	<u>MC</u>	<u>ES</u>	<u>SG</u>	<u>ND</u>	<u>Total</u>
Amer Indian/Alaska Native	2				2
Asian	9		3		12
Black	116	3	43	1	163
Foreign	117		2		119
Hispanic	18		2		20
White	499	10	156	10	675
Two or More Races	4		1		5
Race/Ethnicity Unknown	2		3		5
<b>Total</b>	<b>767</b>	<b>13</b>	<b>210</b>	<b>11</b>	<b>1,001</b>

MC – Masters Candidate  
ES – Education Specialist

SG – Special Graduate  
ND – Non-Credit/Non-Degree

### Spring 2011 Enrollment by Age

	<u>Undergraduate</u>	<u>Graduate</u>	<u>Total</u>	<u>Percent</u>
Under 18	452		452	5.4%
18 – 19	1,875		1,875	22.6%
20 – 21	1,851	9	1,860	22.4%
22 – 24	1,430	219	1,649	19.8%
25 – 29	783	309	1,092	13.1%
30 – 34	379	171	550	6.6%
35 – 39	233	93	326	3.9%
40 – 49	220	130	350	4.2%
50 – 64	84	61	145	1.8%
Over 64	5	9	14	0.2%
<b>Total</b>	<b>7,312</b>	<b>1,001</b>	<b>8,313</b>	<b>100.0%</b>

### Spring 2011 Enrollment by Age Group

	<u>Undergraduate</u>	<u>Graduate</u>	<u>Total</u>	<u>Percent</u>
Under 25	5,608	228	5,836	70.2%
25 and Older	1,704	773	2,477	29.8%
<b>Total</b>	<b>7,312</b>	<b>1,001</b>	<b>8,313</b>	<b>100.0%</b>

### Spring 2011 Average Age

	<u>Average Age</u>	<u>Median Age</u>
All Students	24.2	21
First-Time Freshmen	23.5	20
Undergraduate	23.1	21
Graduate	32.0	29



## Spring 2011 Enrollment by Parish of Origin

<u>Parish</u>	<u>Enrollment</u>		<u>Parish</u>	<u>Enrollment</u>
Acadia	228		St Martin	43
<b>Allen</b>	<b>319</b>		St Mary	32
Ascension	14		St Tammany	33
Assumption	5		Tangipahoa	14
Avoyelles	14		Tensas	1
<b>Beauregard</b>	<b>530</b>		Terrebonne	16
Bienville	2		Vermilion	101
Bossier	10		Vernon	133
Caddo	25		Washington	6
<b>Calcasieu</b>	<b>4,226</b>		Webster	3
<b>Cameron</b>	<b>203</b>		West Baton Rouge	6
Catahoula	1		West Carroll	2
Concordia	2		West Feliciana	8
DeSoto	4		Winn	3
East Baton Rouge	64			
East Feliciana	2		Total Louisiana	7,371
Evangeline	136		% of Total Enrollment	88.7%
Franklin	2		Number of Parishes	57
Grant	14			
Iberia	46			
Iberville	9		<b>Five Parish Total</b>	<b>5,824</b>
Jackson	1		<b>% of Total Enrollment</b>	<b>70.1%</b>
Jefferson	22			
<b>Jefferson Davis</b>	<b>546</b>			
Lafayette	159			
Lafourche	7			
LaSalle	4			
Lincoln	2			
Livingston	11			
Madison	2			
Morehouse	5			
Natchitoches	14			
Orleans	39			
Ouachita	23			
Plaquemines	2			
Pointe Coupee	41			
Rapides	51			
Sabine	11			
St Bernard	3			
St Charles	13			
St James	6			
St John	5			
St Landry	147			

## Spring 2011 Enrollment by State of Origin

State	Enrollment
Alabama	3
Arizona	5
Arkansas	6
California	17
Colorado	2
Connecticut	2
Florida	11
Georgia	5
Idaho	2
Illinois	4
Indiana	5
Iowa	4
Kansas	2
Louisiana	7,371
Maryland	1
Massachusetts	1
Michigan	2
Minnesota	2
Mississippi	13
Missouri	4
Nebraska	1
Nevada	2
New Hampshire	1
New Jersey	2
New Mexico	1
New York	2
North Carolina	3
Ohio	5
Oklahoma	5
Oregon	3
Rhode Island	1
South Carolina	4
Tennessee	5
Texas	350
Virginia	2
Washington	1
Wisconsin	5
Total	7,855
Total Out of State	484
% Out of State of Total Enrollment	5.8%
Number of States (Other than Louisiana)	36

## Spring 2011 Enrollment by Foreign Country of Origin

<u>Country</u>	<u>Enrollment</u>		<u>Country</u>	<u>Enrollment</u>
Azerbaijan	1		Thailand	9
Bangladesh	2		Togo	1
Bolivia	5		Tonga	1
Brazil	2		Trinidad and Tobago	1
Bulgaria	1		Turkey	6
Cameroon	1		Ukraine	4
Canada	3		United Kingdom	5
Chile	1		Venezuela	1
China	62		Vietnam	66
Colombia	13			
Costa Rica	1		Total Foreign	458
Cote d' Ivoire	1		% of Total Enrollment	5.5%
Croatia	2		Number of Countries (Other than USA)	51
Ecuador	6			
Equatorial Guinea	1			
Ethiopia	1			
France	1			
Germany	2			
Ghana	1			
Honduras	3			
India	69			
Indonesia	15			
Ireland	4			
Israel	1			
Jamaica	4			
Kenya	6			
Korea, Republic of	18			
Lithuania	1			
Mexico	6			
Mongolia	1			
Nepal	81			
Nigeria	12			
Pakistan	4			
Peru	6			
Philippines	4			
Romania	5			
Russia	5			
Saudi Arabia	2			
Serbia	2			
South Africa	1			
Sweden	1			
Taiwan	6			

### Spring 2011 Undergraduate Enrollment by Residency

	<b><u>Full-Time</u></b>	<b><u>Part-Time</u></b>	<b><u>Total</u></b>	<b><u>Percent</u></b>
Louisiana	5,024	1,537	6,561	89.7%
Out of state	384	35	419	5.7%
Foreign	312	20	332	4.6%
<b><i>Total</i></b>	<b><i>5,720</i></b>	<b><i>1,592</i></b>	<b><i>7,312</i></b>	<b><i>100.0%</i></b>

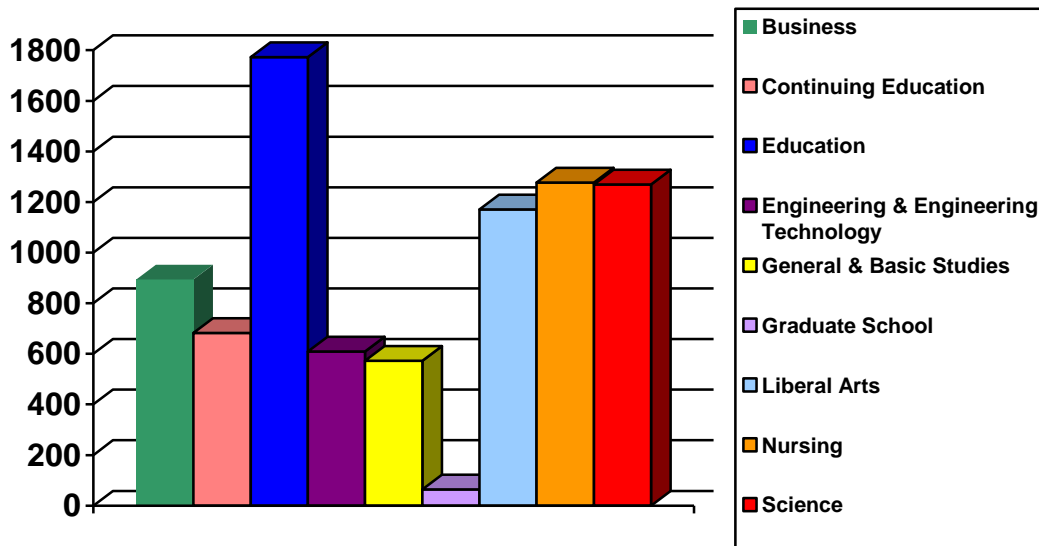
### Spring 2011 Graduate Enrollment by Residency

	<b><u>Full-Time</u></b>	<b><u>Part-Time</u></b>	<b><u>Total</u></b>	<b><u>Percent</u></b>
Louisiana	243	567	810	80.9%
Out of state	38	27	65	6.5%
Foreign	98	28	126	12.6%
<b><i>Total</i></b>	<b><i>379</i></b>	<b><i>622</i></b>	<b><i>1,001</i></b>	<b><i>100.0%</i></b>

This Page is Intentionally Left Blank

## Spring 2011 Enrollment by College

	<u>Undergraduate</u>	<u>Graduate</u>	<u>Total</u>	<u>Percent</u>
Business	819	75	894	10.7%
Continuing Education	670	13	683	8.2%
Education	1,188	585	1,773	21.3%
Engineering & Engineering Technology	559	50	609	7.3%
General & Basic Studies	573		573	6.9%
Graduate School		64	64	0.8%
Liberal Arts	1,136	35	1,171	14.1%
Nursing	1,180	97	1,277	15.4%
Science	1,187	82	1,269	15.3%
<b>Total</b>	<b>7,312</b>	<b>1,001</b>	<b>8,313</b>	<b>100.0%</b>



### Historical Spring Undergraduate Enrollment by College

	<u>2007</u>	<u>2008</u>	<u>2009</u>	<u>2010</u>	<u>2011</u>
Business	1,018	967	876	792	819
Continuing Education*	8	15	21	435	670
Education	1,160	1,094	1,089	1,175	1,188
Engineering & Engineering Technology	485	524	539	534	559
General & Basic Studies*	849	938	977	627	573
Liberal Arts	1,060	968	1,040	1,100	1,136
Nursing	1,008	1,081	1,034	1,169	1,180
Science	1,130	1,062	1,099	1,146	1,187
<b>Total</b>	<b>6,718</b>	<b>6,649</b>	<b>6,675</b>	<b>6,978</b>	<b>7,312</b>

\* In Fall 2009, Early Admissions was moved from General & Basic Studies to Continuing Education.

### Historical Spring Graduate Enrollment by College

	<u>2007</u>	<u>2008</u>	<u>2009</u>	<u>2010</u>	<u>2011</u>
Business	72	86	100	89	75
Continuing Education	17	14	15	16	13
Education	537	588	595	648	585
Engineering & Engineering Technology	101	69	57	63	50
Graduate School	64	61	61	87	64
Liberal Arts	32	32	39	32	35
Nursing	54	78	77	87	97
Science	94	104	77	99	82
<b>Total</b>	<b>971</b>	<b>1,032</b>	<b>1,021</b>	<b>1,121</b>	<b>1,001</b>

## Spring 2011 Enrollment by College and Department

<u>College</u>	<u>Department Name</u>	<u>Undergraduate</u>	<u>Graduate</u>	<u>Total</u>
Business	Accounting, Fin, & Economics	348		348
	Mgmt, Marketing and Gen Bus	471	75	546
<b><i>College of Business Total</i></b>		<b>819</b>	<b>75</b>	<b>894</b>
Continuing Education	Continuing Education	670	13	683
<b><i>Continuing Education Total</i></b>		<b>670</b>	<b>13</b>	<b>683</b>
Education	Educ Leadership & Instr Tech	30	98	128
	Health & Human Performance	438	37	475
	Psychology	245	76	321
	Teacher Education	475	374	849
<b><i>College of Education Total</i></b>		<b>1,188</b>	<b>585</b>	<b>1,773</b>
Engineering & Engineering Technology	Engineering	455	50	505
	Engineering Technology	104		104
<b><i>College of Engineering &amp; Engineering Technology Total</i></b>		<b>559</b>	<b>50</b>	<b>609</b>
General & Basic Studies	Basic Studies	573		573
<b><i>General &amp; Basic Studies Total</i></b>		<b>573</b>		<b>573</b>
Graduate School	Graduate School		64	64
<b><i>Graduate School Total</i></b>			<b>64</b>	<b>64</b>
Liberal Arts	English & Foreign Languages	152	35	187
	History	140		140
	Mass Communication	180		180
	Performing Arts	124		124
	Social Sciences	370		370
	Visual Arts	170		170
<b><i>College of Liberal Arts Total</i></b>		<b>1,136</b>	<b>35</b>	<b>1,171</b>
Nursing	Graduate Nursing		97	97
	Undergraduate Nursing	1,180		1,180
<b><i>College of Nursing Total</i></b>		<b>1,180</b>	<b>97</b>	<b>1,277</b>
Science	Agriculture	301	31	332
	Biology & Health Sciences	496		496
	Chemistry	74	21	95
	Math, Computer Science, & Stat	174	30	204
	Nutrition and Family Studies	129		129
	Physics	13		13
<b><i>College of Science Total</i></b>		<b>1,187</b>	<b>82</b>	<b>1,269</b>
<b>University Total</b>		<b>7,312</b>	<b>1,001</b>	<b>8,313</b>



## Spring 2011 Undergraduate Enrollment by College and Department

<b>College</b>	<b>Department Name</b>	<b>Full-Time</b>	<b>Part-Time</b>	<b>Total</b>
Business	Accounting, Fin, & Economics	312	36	348
	Mgmt, Marketing and Bus Admin	406	65	471
<b>College of Business Total</b>		<b>718</b>	<b>101</b>	<b>819</b>
Continuing Education	Continuing Education	3	667	670
<b>Continuing Education Total</b>		<b>3</b>	<b>667</b>	<b>670</b>
Education	Educ Leadership & Instr Tech	28	2	30
	Health & Human Performance	400	38	438
	Psychology	218	27	245
	Teacher Education	380	95	475
<b>College of Education Total</b>		<b>1,026</b>	<b>162</b>	<b>1,188</b>
Engineering & Engineering Technology	Engineering	406	49	455
	Engineering Technology	89	15	104
<b>College of Engineering &amp; Engineering Technology Total</b>		<b>495</b>	<b>64</b>	<b>559</b>
General & Basic Studies	Basic Studies	454	119	573
<b>General &amp; Basic Studies Total</b>		<b>454</b>	<b>119</b>	<b>573</b>
Liberal Arts	English & Foreign Languages	135	17	152
	History	123	17	140
	Mass Communication	172	8	180
	Performing Arts	113	11	124
	Social Sciences	324	46	370
	Visual Arts	150	20	170
<b>College of Liberal Arts Total</b>		<b>1,017</b>	<b>119</b>	<b>1,136</b>
Nursing	Undergraduate Nursing	938	242	1,180
<b>College of Nursing Total</b>		<b>938</b>	<b>242</b>	<b>1,180</b>
Science	Agriculture	275	26	301
	Biology & Health Sciences	455	41	496
	Chemistry	68	6	74
	Math, Computer Science, & Stat	147	27	174
	Nutrition and Family Studies	112	17	129
	Physics	12	1	13
<b>College of Science Total</b>		<b>1,069</b>	<b>118</b>	<b>1,187</b>
<b>University Total</b>		<b>5,720</b>	<b>1,592</b>	<b>7,312</b>

## Spring 2011 Graduate Enrollment by College and Department

<b>College</b>	<b>Department Name</b>	<b>Full-Time</b>	<b>Part-Time</b>	<b>Total</b>
Business	Mgmt, Marketing and Bus Admin	48	27	75
<b><i>College of Business Total</i></b>		<b>48</b>	<b>27</b>	<b>75</b>
Continuing Education	Continuing Education	1	12	13
<b><i>Continuing Education Total</i></b>		<b>1</b>	<b>12</b>	<b>13</b>
Education	Educ Leadership & Instr Tech	34	64	98
	Health & Human Performance	33	4	37
	Psychology	45	31	76
	Teacher Education	88	286	374
<b><i>College of Education Total</i></b>		<b>200</b>	<b>385</b>	<b>585</b>
Engineering & Engineering Technology	Engineering	33	17	50
<b><i>College of Engineering &amp; Engineering Technology Total</i></b>		<b>33</b>	<b>17</b>	<b>50</b>
Graduate School	Graduate School	9	55	64
<b><i>Graduate School Total</i></b>		<b>9</b>	<b>55</b>	<b>64</b>
Liberal Arts	English & Foreign Languages	27	8	35
<b><i>College of Liberal Arts Total</i></b>		<b>27</b>	<b>8</b>	<b>35</b>
Nursing	Graduate Nursing	8	89	97
<b><i>College of Nursing Total</i></b>		<b>8</b>	<b>89</b>	<b>97</b>
Science	Agriculture	22	9	31
	Chemistry	18	3	21
	Math, Computer Science, & Stat	13	17	30
<b><i>College of Science Total</i></b>		<b>53</b>	<b>29</b>	<b>82</b>
<b>University Total</b>		<b>379</b>	<b>622</b>	<b>1,001</b>

## Historical Spring Undergraduate Enrollment by College and Department

<u>College</u>	<u>Department Name</u>	<u>2007</u>	<u>2008</u>	<u>2009</u>	<u>2010</u>	<u>2011</u>
Business	Accounting, Fin, & Economics	339	340	352	340	348
	Mgmt, Marketing and Gen Bus	679	627	524	452	471
<b><i>College of Business Total</i></b>		<b>1,018</b>	<b>967</b>	<b>876</b>	<b>792</b>	<b>819</b>
Continuing Education	Continuing Education	8	15	21	435	670
<b><i>Continuing Education Total</i></b>		<b>8</b>	<b>15</b>	<b>21</b>	<b>435</b>	<b>670</b>
Education	Educ Leadership & Instr Tech	21	17	22	33	30
	Health & Human Performance	360	363	384	393	438
	Psychology	239	228	205	219	245
	Teacher Education	540	486	478	530	475
<b><i>College of Education Total</i></b>		<b>1,160</b>	<b>1,094</b>	<b>1,089</b>	<b>1,175</b>	<b>1,188</b>
Engineering & Engineering Technology	Engineering	319	349	380	402	455
	Engineering Technology	166	175	159	132	104
<b><i>College of Engineering &amp; Engineering Technology Total</i></b>		<b>485</b>	<b>524</b>	<b>539</b>	<b>534</b>	<b>559</b>
General & Basic Studies	Basic Studies	849	938	977	627	573
<b><i>Gen &amp; Basic Studies Total</i></b>		<b>849</b>	<b>938</b>	<b>977</b>	<b>627</b>	<b>573</b>
Liberal Arts	English & Foreign Languages	120	129	139	146	152
	History	129	127	139	142	140
	Mass Communication	173	141	158	156	180
	Performing Arts	102	81	105	107	124
	Social Sciences	369	313	322	368	370
	Visual Arts	167	177	177	181	170
<b><i>College of Liberal Arts Total</i></b>		<b>1,060</b>	<b>968</b>	<b>1,040</b>	<b>1,100</b>	<b>1,136</b>
Nursing	Undergraduate Nursing	1,008	1,081	1,034	1,169	1,180
<b><i>College of Nursing Total</i></b>		<b>1,008</b>	<b>1,081</b>	<b>1,034</b>	<b>1,169</b>	<b>1,180</b>
Science	Agriculture*	198	192	252	283	301
	Biological & Envr Sciences*	551	548	485		
	Biology & Health Sciences*				470	496
	Chemistry	95	72	95	100	74
	Math, Computer Science, & Stat	149	142	162	169	174
	Nutrition and Family Studies	127	100	94	109	129
	Physics	10	8	11	15	13
<b><i>College of Science Total</i></b>		<b>1,130</b>	<b>1,062</b>	<b>1,099</b>	<b>1,146</b>	<b>1,187</b>
<b>University Total</b>		<b>6,718</b>	<b>6,649</b>	<b>6,675</b>	<b>6,978</b>	<b>7,312</b>

\*In Fall 2009 Environmental Science enrollment was moved from Biological & Environmental Sciences to Agriculture.

## Historical Spring Graduate Enrollment by College and Department

<u>College</u>	<u>Department Name</u>	<u>2007</u>	<u>2008</u>	<u>2009</u>	<u>2010</u>	<u>2011</u>
Business	Mgmt, Marketing and Gen Bus	72	86	100	89	75
<b><i>College of Business Total</i></b>		<b>72</b>	<b>86</b>	<b>100</b>	<b>89</b>	<b>75</b>
Continuing Education	Continuing Education	17	14	15	16	13
<b><i>Continuing Education Total</i></b>		<b>17</b>	<b>14</b>	<b>15</b>	<b>16</b>	<b>13</b>
Education	Educ Leadership & Instr Tech	116	126	122	135	98
	Health & Human Performance	20	22	41	32	37
	Psychology	61	63	64	59	76
	Teacher Education	340	377	368	422	374
<b><i>College of Education Total</i></b>		<b>537</b>	<b>588</b>	<b>595</b>	<b>648</b>	<b>585</b>
Engineering & Engineering Tech	Engineering	101	69	57	63	50
<b><i>College of Engineering &amp; Engineering Technology Total</i></b>		<b>101</b>	<b>69</b>	<b>57</b>	<b>63</b>	<b>50</b>
Graduate School	Graduate School	64	61	61	87	64
<b><i>Graduate School Total</i></b>		<b>64</b>	<b>61</b>	<b>61</b>	<b>87</b>	<b>64</b>
Liberal Arts	English & Foreign Languages	27	30	35	30	35
	Performing Arts	5	2	4	2	
<b><i>College of Liberal Arts Total</i></b>		<b>32</b>	<b>32</b>	<b>39</b>	<b>32</b>	<b>35</b>
Nursing	Graduate Nursing	54	78	77	87	97
<b><i>College of Nursing Total</i></b>		<b>54</b>	<b>78</b>	<b>77</b>	<b>87</b>	<b>97</b>
Science	Agriculture*	6	11	25	33	31
	Biological & Envr Sciences*	8	10			
	Biology & Health Sciences*					21
	Chemistry	16	16	15	20	30
	Math, Computer Science, & Stat	56	59	37	46	
	Nutrition and Family Studies	8	8			
<b><i>College of Science Total</i></b>		<b>94</b>	<b>104</b>	<b>77</b>	<b>99</b>	<b>82</b>
<b>University Total</b>		<b>971</b>	<b>1,032</b>	<b>1,021</b>	<b>1,121</b>	<b>1,001</b>

\*In Fall 2009 Environmental Science enrollment was moved from Biological & Environmental Sciences to Agriculture.

## Spring 2011 Enrollment by Department and Major

<u>College/Department</u>	<u>Major</u>	<u>Undergraduate</u>	<u>Graduate</u>	<u>Total</u>
<b>Business</b>				
Accounting, Fin & Economics	Accounting	253		253
	Finance	95		95
<i>Department Total</i>		<b>348</b>		<b>348</b>
Mgmt, Marketing, & Gen Bus	Business Administration		75	75
	Gen Business Administration	180		180
	Management	187		187
	Marketing	104		104
<i>Department Total</i>		<b>471</b>	<b>75</b>	<b>546</b>
<b>College of Business Total</b>		<b>819</b>	<b>75</b>	<b>894</b>
<b>Continuing Education</b>				
Continuing Education	EASE Program	9	13	22
	Undeclared	661		661
<i>Department Total</i>		<b>670</b>	<b>13</b>	<b>683</b>
<b>Continuing Education Total</b>		<b>670</b>	<b>13</b>	<b>683</b>
<b>Education</b>				
Educ Leadership & Instr Tech	Business Education – Grades 6-12	30		30
	Educational Leadership		63	63
	Educational Technology Leadership		20	20
	Instructional Technology		15	15
<i>Department Total</i>		<b>30</b>	<b>98</b>	<b>128</b>
Health & Human Performance	Athletic Training	73		73
	Health & Human Performance		37	37
	Health & Human Performance, Education	3		3
	Health & Human Performance, General	200		200
	Health & Physical Education, Gr K-12	162		162
<i>Department Total</i>		<b>438</b>	<b>37</b>	<b>475</b>
Psychology	Psychology	245	76	321
<i>Department Total</i>		<b>245</b>	<b>76</b>	<b>321</b>

### Spring 2011 Enrollment by Department and Major (continued)

<u>College/Department</u>	<u>Major</u>	<u>Undergraduate</u>	<u>Graduate</u>	<u>Total</u>
Teacher Education	Add-on Teacher Certification		10	10
	Alt Certification – Grades 1-12 Mild/Moderate Sp Ed		16	16
	Alt Certification – Grades K-12 Health & Physical Ed		9	9
	Alt Certification – Grades 1-5		47	47
	Alt Certification – Grade 6-12		42	42
	Alt Certification – K-12 Art Ed		5	5
	Alt Certification – Grades PK-3		15	15
	Curriculum and Instruction		16	16
	Early Childhood Educ – Grades PK- 3	214		214
	Elementary Education – Grades 1–5	247	62	309
	School Counseling		38	38
	Secondary Education	1		1
	Secondary Education Grades 6-12		83	83
	Special Education, Mild/Mod Gr 1-12		22	22
	Special Education		9	9
	Special Education, General	12		12
	Undeclared	1		1
<i>Department Total</i>		<i>475</i>	<i>374</i>	<i>849</i>
<i>College of Education Total</i>		<i>1,188</i>	<i>585</i>	<i>1,773</i>
<b>Engineering &amp; Engineering Technology</b>				
Engineering	Engineering	455	50	505
<i>Department Total</i>		<i>455</i>	<i>50</i>	<i>505</i>
Engineering Technology	Engineering Technology	104		104
<i>Department Total</i>		<i>104</i>		<i>104</i>
<i>College of Engineering &amp; Engineering Technology Total</i>		<i>559</i>	<i>50</i>	<i>609</i>
<b>General &amp; Basic Studies</b>				
Basic Studies	Basic Studies	92		92
	General Studies	475		475
	Undeclared	6		6
<i>Department Total</i>		<i>573</i>		<i>573</i>
<i>General &amp; Basic Studies Total</i>		<i>573</i>		<i>573</i>

### Spring 2011 Enrollment by Department and Major (continued)

<u>College/Department</u>	<u>Major</u>	<u>Undergraduate</u>	<u>Graduate</u>	<u>Total</u>
<b>Graduate School</b>				
Graduate School	Non-degree		64	64
<i>Department Total</i>			<b>64</b>	<b>64</b>
<b>Graduate School Total</b>			<b>64</b>	<b>64</b>
<b>Liberal Arts</b>				
English & Foreign Languages	Creative Writing		18	18
	English	60	17	77
	English Education Grades 6 – 12	64		64
	Foreign Language Education Gr 6-12	6		6
	Foreign Languages	13		13
	French	2		2
	Spanish	7		7
<i>Department Total</i>		<b>152</b>	<b>35</b>	<b>187</b>
History	History	48		48
	Liberal Studies	30		30
	Social Studies Education Gr 6 – 12	62		62
<i>Department Total</i>		<b>140</b>		<b>140</b>
Mass Communication	Communication Studies	11		11
	Mass Communication	166		166
	Speech	1		1
	Speech Education Grades 6-12	2		2
<i>Department Total</i>		<b>180</b>		<b>180</b>
Performing Arts	Music Education	1		1
	Music Educ–Instrumental, Gr K–12	47		47
	Music Education – Vocal, Gr 6 – 12	20		20
	Music Performance	33		33
	Theatre Arts	23		23
<i>Department Total</i>		<b>124</b>		<b>124</b>
Social Sciences	Criminal Justice	165		165
	Criminal Justice Online	77		77
	General Studies	4		4
	Government	36		36
	Paralegal Studies	27		27
	Sociology	60		60
	Undeclared	1		1
<i>Department Total</i>		<b>370</b>		<b>370</b>

### Spring 2011 Enrollment by Department and Major (continued)

<u>College/Department</u>	<u>Major</u>	<u>Undergraduate</u>	<u>Graduate</u>	<u>Total</u>
Visual Arts	Art	130		130
	Art Education	3		3
	Art Education – Grades K – 12	37		37
<i>Department Total</i>		<i>170</i>		<i>170</i>
<i>College of Liberal Arts Total</i>		<i>1,136</i>	<i>35</i>	<i>1,171</i>
<b>Nursing</b>				
Graduate Nursing	Nursing		97	97
<i>Department Total</i>			<i>97</i>	<i>97</i>
Undergraduate Nursing	Nursing	1,161		1,161
	Nursing Online	19		19
<i>Department Total</i>		<i>1,180</i>		<i>1,180</i>
<i>College of Nursing Total</i>		<i>1,180</i>	<i>97</i>	<i>1,277</i>
<b>Science</b>				
Agriculture	Agricultural Education – Grs 6 – 12	19		19
	Agricultural Sciences	212		212
	Environmental & Chemical Sciences		31	31
	Environmental Science	5		5
	Environmental Science Education Grades 6-12	2		2
	Natural Resource Conserv Mgmt	51		51
	Wildlife Management	12		12
<i>Department Total</i>		<i>301</i>	<i>31</i>	<i>332</i>
Biology & Health Sciences	Biological Science	220		220
	Biology Education – Grades 6 – 12	19		19
	Clinical Laboratory Science	59		59
	Radiologic Sciences	198		198
<i>Department Total</i>		<i>496</i>		<i>496</i>
Chemistry	Chemistry	73		73
	Chemistry Education – Grades 6-12	1		1
	Environmental & Chemical Sciences		21	21
<i>Department Total</i>		<i>74</i>	<i>21</i>	<i>95</i>



### Spring 2011 Enrollment by Department and Major (continued)

<u>College/Department</u>	<u>Major</u>	<u>Undergraduate</u>	<u>Graduate</u>	<u>Total</u>
Math, Computer Sci and Stat	Computer Information Tech	28		28
	Computer Science	80		80
	Mathematical Sciences		30	30
	Mathematics	26		26
	Mathematics Education – Grades 6-12	40		40
<i>Department Total</i>		<i>174</i>	<i>30</i>	<i>204</i>
Nutrition & Family Studies	Family & Consumer Sciences	125		125
	Family & Consumer Sciences Education Grades 6-12	1		1
	General Studies	3		3
<i>Department Total</i>		<i>129</i>		<i>129</i>
Physics	Physics	13		13
<i>Department Total</i>		<i>13</i>		<i>13</i>
<b><i>College of Science Total</i></b>		<b><i>1,187</i></b>	<b><i>82</i></b>	<b><i>1,269</i></b>
<b>University Total</b>		<b>7,312</b>	<b>1,001</b>	<b>8,313</b>

## Historical Spring Enrollment Data Since 1940

<u>Spring</u>	<u>Under-graduate</u>	<u>Graduate</u>	<u>Total</u>		<u>Spring</u>	<u>Under-graduate</u>	<u>Graduate</u>	<u>Total</u>
<b>2011</b>	7,312	1,001	8,313		<b>1975</b>	4,585	942	5,527
<b>2010</b>	6,978	1,121	8,099		<b>1974</b>	4,544	932	5,476
<b>2009</b>	6,675	1,021	7,696		<b>1973</b>	4,659	1,015	5,674
<b>2008</b>	6,649	1,032	7,681		<b>1972</b>	4,659	943	5,602
<b>2007</b>	6,718	971	7,689		<b>1971</b>	4,332	830	5,162
<b>2006</b>	6,915	993	7,908		<b>1970</b>	4,016	616	4,632
<b>2005</b>	7,178	981	8,159		<b>1969</b>	4,045	488	4,533
<b>2004</b>	6,877	1,003	7,880		<b>1968</b>	3,990	376	4,366
<b>2003</b>	6,587	1,008	7,595		<b>1967</b>	3,555	362	3,917
<b>2002</b>	6,332	995	7,327		<b>1966</b>	3,009	300	3,309
<b>2001</b>	6,171	990	7,161		<b>1965</b>	2,866	240	3,106
<b>2000</b>	6,319	1,115	7,434		<b>1964</b>	2,416	172	2,588
<b>1999</b>	6,315	1,068	7,383		<b>1963</b>	2,468	139	2,607
<b>1998</b>	6,172	1,111	7,283		<b>1962</b>	2,617	87	2,704
<b>1997</b>	6,313	1,117	7,430		<b>1961</b>	2,506		2,506
<b>1996</b>	6,689	1,106	7,795		<b>1960</b>	2,369		2,369
<b>1995</b>	6,993	1,142	8,135		<b>1959</b>	2,163		2,163
<b>1994</b>	7,023	1,058	8,081		<b>1958</b>	1,943		1,943
<b>1993</b>	6,618	1,134	7,752		<b>1957</b>	1,638		1,638
<b>1992</b>	6,387	1,071	7,458		<b>1956</b>	1,648		1,648
<b>1991</b>	6,015	1,036	7,051		<b>1955</b>	1,380		1,380
<b>1990</b>	6,080	1,089	7,169		<b>1954</b>	998		998
<b>1989</b>	5,884	1,066	6,950		<b>1953</b>	928		928
<b>1988</b>	5,901	1,022	6,923		<b>1952</b>	933		933
<b>1987</b>	6,096	1,057	7,153		<b>1951</b>	601		601
<b>1986</b>	6,031	1,195	7,226		<b>1950</b>	336		336
<b>1985</b>	6,146	1,487	7,633		<b>1949</b>	501		501
<b>1984</b>	6,049	1,343	7,392		<b>1948</b>	529		529
<b>1983</b>	5,704	1,399	7,103		<b>1947</b>	560		560
<b>1982</b>	5,206	1,521	6,727		<b>1946</b>	268		268
<b>1981</b>	4,837	723	5,560		<b>1945</b>	116		116
<b>1980</b>	4,203	709	4,912		<b>1944</b>	107		107
<b>1979</b>	4,198	650	4,848		<b>1943</b>	173		173
<b>1978</b>	4,396	721	5,117		<b>1942</b>	181		181
<b>1977</b>	4,720	688	5,408		<b>1941</b>	215		215
<b>1976</b>	4,817	903	5,720		<b>1940</b>	na		na

## Retention and Graduation Rates

### First-Time Full-Time Bachelor's Degree Seeking Freshman First to Second Year Retention Rate

	<u>% Retained</u>
Fall 2009 to Fall 2010	69.6%
Fall 2008 to Fall 2009	67.2%
Fall 2007 to Fall 2008	68.4%
Fall 2006 to Fall 2007	65.5%

### IPEDS Graduation Rates

	<u>2003 Cohort</u>
4 Years	12%
5 Years	28%
6 Years	35%

### Time to Degree

### First-Time Full-Time Bachelor's Degree Seeking Freshman

2009-2010 Completers	5.6 years
2008-2009 Completers	5.7 years
2007-2008 Completers	5.7 years

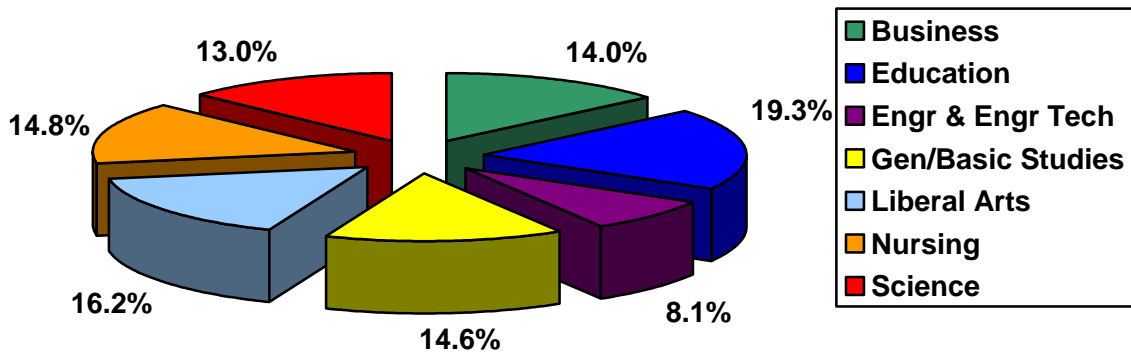
\*Source Board of Regents TTDRPTBOR

**Degrees Conferred  
July 1, 2009 – June 30, 2010**

**Degrees Conferred by College and Level**

	<u>Associate</u>	<u>Bachelor's</u>	<u>Master's</u>	<u>Education Specialist</u>	<u>Total</u>
Business		158	38		196
Education		128	140	3	271
Engineering & Engineering Technology	30	48	36		114
General & Basic Studies	58	147			205
Liberal Arts	15	191	22		228
Nursing	37	155	16		208
Science	12	148	23		183
<b>Total</b>	<b>152</b>	<b>975</b>	<b>275</b>	<b>3</b>	<b>1,405</b>

**Degrees Conferred by College**



### Historical Degrees Conferred by College

	<b>05-06</b>	<b>06-07</b>	<b>07-08</b>	<b>08-09</b>	<b>09-10</b>
Business	206	230	197	216	196
Education	328	295	263	302	271
Engineering & Engineering Technology	133	125	163	122	114
General & Basic Studies	219	250	264	218	205
Liberal Arts	226	221	223	194	228
Nursing	132	163	179	227	208
Science	168	169	177	189	183
<b>Total</b>	<b>1,412</b>	<b>1,453</b>	<b>1,466</b>	<b>1,468</b>	<b>1,405</b>

### Historical Degrees Conferred by Level

	<b>05-06</b>	<b>06-07</b>	<b>07-08</b>	<b>08-09</b>	<b>09-10</b>
Associate	120	138	148	122	152
Bachelor	1,041	1,043	1,055	1,049	975
Master	248	268	262	297	275
Education Specialist	3	4	1		3
<b>Total</b>	<b>1,412</b>	<b>1,453</b>	<b>1,466</b>	<b>1,468</b>	<b>1,405</b>

### 2009-2010 Degrees Conferred by Gender and Ethnicity

	<u>Female</u>	<u>Male</u>	<u>Total</u>
Amer Indian/Alaska Native	4	4	8
Asian/Pacific Islander	9	9	18
Black	138	52	190
Foreign	48	52	100
Hispanic	14	7	21
White	689	374	1,063
Race/Ethnicity Unknown	3	2	5
<b>Total</b>	<b>905</b>	<b>500</b>	<b>1,405</b>

### 2009-2010 Degrees Conferred by Gender and Level

	<u>Associate</u>	<u>Bachelor's</u>	<u>Master's</u>	<u>Education Specialist</u>	<u>Total</u>
Female	87	642	174	2	905
Male	65	333	101	1	500
<b>Total</b>	<b>152</b>	<b>975</b>	<b>275</b>	<b>3</b>	<b>1,405</b>

### Historical Degrees Conferred by Gender

	<u>05-06</u>	<u>06-07</u>	<u>07-08</u>	<u>08-09</u>	<u>09-10</u>
Female	865	909	912	904	905
Male	547	544	554	564	500
<b>Total</b>	<b>1,412</b>	<b>1,453</b>	<b>1,466</b>	<b>1,468</b>	<b>1,405</b>

### 2009-2010 Degrees Conferred by Ethnicity and Level

	<u>Associate</u>	<u>Bachelor's</u>	<u>Master's</u>	<u>Education Specialist</u>	<u>Total</u>
Amer Indian/Alaska Native	1	7			8
Asian/Pacific Islander	2	14	2		18
Black	39	130	20	1	190
Foreign		34	66		100
Hispanic		16	5		21
White	110	770	181	2	1,063
Race/Ethnicity Unknown		4	1		5
<b>Total</b>	<b>152</b>	<b>975</b>	<b>275</b>	<b>3</b>	<b>1,405</b>

### Historical Degrees Conferred by Ethnicity

	<u>05-06</u>	<u>06-07</u>	<u>07-08</u>	<u>08-09</u>	<u>09-10</u>
Amer Indian/Alaska Native	10	8	8	6	8
Asian/Pacific Islander	12	14	13	12	18
Black	209	235	234	223	190
Foreign	95	96	121	127	100
Hispanic	23	12	18	17	21
White	1,059	1,083	1,066	1,075	1,063
Race/Ethnicity Unknown	4	5	6	8	5
<b>Total</b>	<b>1,412</b>	<b>1,453</b>	<b>1,466</b>	<b>1,468</b>	<b>1,405</b>

### Top 10 Bachelor's Degrees Conferred 2009–2010

	<u>Number of Degrees</u>
BSN Nursing	155
BGS General Studies	147
BS Accounting	42
BS Management	42
BS Criminal Justice	37
BS Engineering	35
BS Marketing	35
BS Elementary Education Gr 1-5	32
BS Mass Communication	32
BS Psychology	31

### Top 5 Associate Degrees Conferred 2009–2010

	<u>Number of Degrees</u>
AGS General Studies	58
ADN Nursing	37
AS Engineering Technology	30
AS Computer Information Technology	11
AA Paralegal Studies	7

### Top 5 Master's Degrees Conferred 2009–2010

	<u>Number of Degrees</u>
MBA Business Administration	38
MEng Engineering	36
Med Educational Leadership	25
MS Health and Human Performance	22
MAT Elementary Educ Grades 1-5	19



### Future Plans of Fall 2009 / Spring 2010 Graduates\*

<b><u>All Degree Levels</u></b>	<b><u>Fall 2009</u></b>	<b><u>Spring 2010</u></b>	<b><u>2009-10</u></b>
Employment, FT paid	79.90%	72.5%	75.68%
Employment, PT paid	3.30%	1.75%	2.43%
Grad/Prof school FT	4.70%	12.25%	9.01%
Grad/Prof school PT	5.70%	8.00%	7.01%
Additional UG coursework	2.40%	1.75%	2.00%
Volunteer activity (Peace Corp)	0.00%	0.75%	0.72%
Military	0.70%	1.00%	0.57%
Starting or raising a family	1.30%	1.00%	1.14%
Other	2.00%	1.00%	1.43%
Total	100.00%	100.00%	100.00%
<b><u>Bachelor Degree Level Only</u></b>	<b><u>Fall 2009</u></b>	<b><u>Spring 2010</u></b>	<b><u>2009-10</u></b>
Employment, FT paid	80.10%	70.90%	74.47%
Employment, PT paid	2.55%	0.65%	1.39%
Grad/Prof school FT	5.62%	12.94%	10.10%
Grad/Prof school PT	6.12%	9.71%	8.32%
Additional UG coursework	2.04%	1.94%	1.98%
Volunteer activity (Peace Corp)	0.00%	1.29%	0.79%
Military	0.00%	0.97%	0.59%
Starting or raising a family	1.02%	1.00%	1.01%
Other	2.55%	0.60%	1.36%
Total	100.00%	100.00%	100.00%

\*Survey administered each semester at GRAD Fest

56% of Completers responded to College portrait question: What is most likely to be your principal activity upon graduation?

## Student Credit Hours (SCH) Fall 2010 SCH's by Department and Level

Student rank classification is used to determine SCH level according to BOR definition.

	<u>Lower UG</u>	<u>Upper UG</u>	<u>Graduate</u>	<u>Total</u>
Accounting, Fin & Econ	819	3,177	270	4,266
Mgmt, Marketing and Gen Bus	1,233	2,619	456	4,308
<b><i>College of Business Total</i></b>	<b><i>2,052</i></b>	<b><i>5,796</i></b>	<b><i>726</i></b>	<b><i>8,574</i></b>
Educ Leadership & Instr Tech	621	426	1,191	2,238
Health & Human Performance	2,393	2,436	357	5,186
Psychology	4,119	2,247	718	7,084
Teacher Education	981	2,646	936	4,563
Stdnt Tchng & Prof Educ Srvc		513	207	720
<b><i>College of Education Total</i></b>	<b><i>8,114</i></b>	<b><i>8,268</i></b>	<b><i>3,409</i></b>	<b><i>19,791</i></b>
Engineering	813	2,015	295	3,123
Engineering Technology	311	612		923
<b><i>College of Engineering and Engineering Technology Total</i></b>	<b><i>1,124</i></b>	<b><i>2,627</i></b>	<b><i>295</i></b>	<b><i>4,046</i></b>
English & Foreign Languages	7,568*	2,621	337	10,526
History	4,266	1,872	18	6,156
Mass Communications	2,783	1,484	3	4,270
Performing Arts	2,032	1,448	9	3,489
Social Sciences	4,211	4,472	33	8,716
Visual Arts	1,258	1,655	3	2,916
<b><i>College of Liberal Arts Total</i></b>	<b><i>22,118</i></b>	<b><i>13,552</i></b>	<b><i>403</i></b>	<b><i>36,073</i></b>
Graduate Nursing			516	516
Undergraduate Nursing	159	5,586		5,745
<b><i>College of Nursing Total</i></b>	<b><i>159</i></b>	<b><i>5,586</i></b>	<b><i>516</i></b>	<b><i>6,261</i></b>
Agriculture	1,743	1,864	299	3,906
Biology & Health Sciences	6,230	3,012	36	9,278
Chemistry	2,326	1,393	118	3,837
Math, Comp Sci, & Stat	10,604**	3,816	493	14,913
Nutrition and Family Studies	672	1,298	108	2,078
Physics	1,181	745	3	1,929
<b><i>College of Science Total</i></b>	<b><i>22,756</i></b>	<b><i>12,128</i></b>	<b><i>1,057</i></b>	<b><i>35,941</i></b>

\* Includes 792 developmental

\*\* Includes 1,892 developmental

**Fall 2010 SCH's by Department and Level (continued)**

	<u>Lower UG</u>	<u>Upper UG</u>	<u>Graduate</u>	<u>Total</u>
General and Basic Studies	9	83		92
<i>Division of General and Basic Studies Total</i>	<i>9</i>	<i>83</i>		<i>92</i>
Freshmen Foundations	1,408	7		1,415
<i>Freshman Foundations Total</i>	<i>1,408</i>	<i>7</i>		<i>1,415</i>
Military Science	16	10		26
<i>Military Science Total</i>	<i>16</i>	<i>10</i>		<i>26</i>
<i>University Total</i>	<i>57,756</i>	<i>48,057</i>	<i>6,406</i>	<i>112,219</i>

## Historical Fall SCH's by Department

	<b><u>2006</u></b>	<b><u>2007</u></b>	<b><u>2008</u></b>	<b><u>2009</u></b>	<b><u>2010</u></b>
Accounting, Fin & Econ	4,308	3,852	3,891	4,023	4,266
Mgmt, Marketing and Gen Bus	5,565	5,433	5,574	4,683	4,308
<b><i>College of Business Total</i></b>	<b>9,873</b>	<b>9,285</b>	<b>9,465</b>	<b>8,706</b>	<b>8,574</b>
Educ Leadership & Instr Tech	2,394	2,046	2,046	2,387	2,238
Health & Human Performance	4,643	5,380	4,882	5,551	5,186
Psychology	5,869	5,846	6,024	6,191	7,084
Teacher Education	3,958	3,592	3,605	4,497	4,563
Student Tchng & Prof Educ Srvc	726	636	477	555	720
<b><i>College of Education Total</i></b>	<b>17,590</b>	<b>17,500</b>	<b>17,034</b>	<b>19,181</b>	<b>19,791</b>
Engineering	2,467	3,129	2,877	2,970	3,123
Engineering Technology	1,143	1,129	1,157	917	923
<b><i>College of Engineering and Engineering Technology Total</i></b>	<b>3,610</b>	<b>4,258</b>	<b>4,034</b>	<b>3,887</b>	<b>4,046</b>
English & Foreign Languages	10,254	9,890	10,207	10,171	10,526
History	5,136	4,575	5,697	6,069	6,156
Mass Communications	3,811	3,923	4,106	4,266	4,270
Performing Arts	4,429	3,395	3,245	3,207	3,489
Social Sciences	8,578	8,106	7,922	8,756	8,716
Visual Arts	2,676	2,476	2,682	2,640	2,916
<b><i>College of Liberal Arts Total</i></b>	<b>34,884</b>	<b>32,365</b>	<b>33,859</b>	<b>35,109</b>	<b>36,073</b>
Graduate Nursing	355	578	607	583	516
Undergraduate Nursing	5,477	5,933	6,504	5,863	5,745
<b><i>College of Nursing Total</i></b>	<b>5,832</b>	<b>6,511</b>	<b>7,111</b>	<b>6,446</b>	<b>6,261</b>
Agriculture*	1,973	1,992	2,090	3,525	3,906
Biological & Envr Sciences*	8,719	9,845	9,529		
Biology & Health Sciences*				8,704	9,278
Chemistry	4,404	3,743	3,747	3,744	3,837
Math, Comp Sci, & Stat	14,386	13,573	14,110	14,493	14,913
Nutrition and Family Studies	2,847	2,276	1,982	2,303	2,078
Physics	2,150	1,881	1,743	2,276	1,929
<b><i>College of Science Total</i></b>	<b>34,479</b>	<b>33,310</b>	<b>33,201</b>	<b>35,045</b>	<b>35,941</b>

\*In Spring 2009 Environmental Science was moved from Biological & Environmental Sciences to Agriculture.

### Historical Fall SCH's by Department (continued)

	<u>2006</u>	<u>2007</u>	<u>2008</u>	<u>2009</u>	<u>2010</u>
General and Basic Studies	1,351	1,276	98	77	92
<b><i>Division of General and Basic Studies Total</i></b>	<b><i>1,351</i></b>	<b><i>1,276</i></b>	<b><i>98</i></b>	<b><i>77</i></b>	<b><i>92</i></b>
Freshmen Foundations			1,351	1,392	1,415
<b><i>Freshman Foundation Total</i></b>			<b><i>1,351</i></b>	<b><i>1,392</i></b>	<b><i>1,415</i></b>
Military Science			13	26	26
<b><i>Military Science Total</i></b>			<b><i>13</i></b>	<b><i>26</i></b>	<b><i>26</i></b>
<b><i>Total</i></b>	<b><i>107,619</i></b>	<b><i>104,505</i></b>	<b><i>106,166</i></b>	<b><i>109,869</i></b>	<b><i>112,219</i></b>

## Spring 2011 SCH's by Department and Level

Student rank classification is used to determine SCH level according to BOR definition.

	<u>Lower UG</u>	<u>Upper UG</u>	<u>Graduate</u>	<u>Total</u>
Accounting, Fin & Econ	942	2,994	312	4,248
Mgmt, Marketing and Gen Bus	1,026	2,649	285	3,960
<b><i>College of Business Total</i></b>	<b><i>1,968</i></b>	<b><i>5,643</i></b>	<b><i>597</i></b>	<b><i>8,208</i></b>
Educ Leadership & Instr Tech	699	453	1,071	2,223
Health & Human Performance	2,437	2,440	266	5,143
Psychology	3,582	2,283	784	6,649
Teacher Education	877	2,661	814	4,352
Stdnt Tchng & Prof Educ Srvc		657	162	819
<b><i>College of Education Total</i></b>	<b><i>7,595</i></b>	<b><i>8,494</i></b>	<b><i>3,097</i></b>	<b><i>19,186</i></b>
Engineering	568	2,041	393	3,002
Engineering Technology	168	597		765
<b><i>College of Engineering and Engineering Technology Total</i></b>	<b><i>736</i></b>	<b><i>2,638</i></b>	<b><i>393</i></b>	<b><i>3,767</i></b>
English & Foreign Languages	6,469	2,699	404	9,572
History	3,855	1,917	30	5,802
Mass Communications	2,437	1,655	13	4,105
Performing Arts	1,633	1,589	6	3,228
Social Sciences	4,169	4,509	21	8,699
Visual Arts	1,330	1,708	6	3,044
<b><i>College of Liberal Arts Total</i></b>	<b><i>19,893</i></b>	<b><i>14,077</i></b>	<b><i>480</i></b>	<b><i>34,450</i></b>
Graduate Nursing			615	615
Undergraduate Nursing	684	5,644		6,328
<b><i>College of Nursing Total</i></b>	<b><i>684</i></b>	<b><i>5,644</i></b>	<b><i>615</i></b>	<b><i>6,943</i></b>
Agriculture	1,453	1,863	290	3,606
Biology & Health Sciences	5,155	3,288	9	8,452
Chemistry	2,394	1,533	179	4,106
Math, Comp Sci, & Stat	8,229**	3,553	245	12,027
Nutrition and Family Studies	817	1,369	96	2,282
Physics	856	1,023		1,879
<b><i>College of Science Total</i></b>	<b><i>18,904</i></b>	<b><i>12,629</i></b>	<b><i>819</i></b>	<b><i>32,352</i></b>

\* Includes 464 developmental

\*\* Includes 876 developmental

**Spring 2011 SCH's by Department and Level (continued)**

	<u>Lower UG</u>	<u>Upper UG</u>	<u>Graduate</u>	<u>Total</u>
General and Basic Studies	4	83		87
<i>Division of General and Basic Studies Total</i>	<i>4</i>	<i>83</i>		<i>87</i>
Freshmen Foundations	247	5		252
<i>Freshman Foundations Total</i>	<i>247</i>	<i>5</i>		<i>252</i>
Military Science	18	12		30
<i>Military Science Total</i>	<i>18</i>	<i>12</i>		<i>30</i>
<b><i>University Total</i></b>	<b><i>50,049</i></b>	<b><i>49,225</i></b>	<b><i>6,001</i></b>	<b><i>105,275</i></b>

## Historical Spring SCH's by Department

	<b><u>2007</u></b>	<b><u>2008</u></b>	<b><u>2009</u></b>	<b><u>2010</u></b>	<b><u>2011</u></b>
Accounting, Fin & Econ	4,368	4,020	3,780	4,329	4,248
Mgmt, Marketing and Gen Bus	5,265	5,142	4,761	4,083	3,960
<b><i>College of Business Total</i></b>	<b><i>9,633</i></b>	<b><i>9,162</i></b>	<b><i>8,541</i></b>	<b><i>8,412</i></b>	<b><i>8,208</i></b>
Educ Leadership & Instr Tech	2,177	2,328	2,004	2,365	2,223
Health & Human Performance	4,975	5,343	5,041	5,210	5,143
Psychology	5,831	5,628	5,923	6,067	6,649
Teacher Education	3,919	3,812	3,816	4,986	4,352
Student Tchng & Prof Educ Srvc	801	744	567	804	819
<b><i>College of Education Total</i></b>	<b><i>17,703</i></b>	<b><i>17,855</i></b>	<b><i>17,351</i></b>	<b><i>19,432</i></b>	<b><i>19,186</i></b>
Engineering	2,991	2,745	2,711	2,712	3,002
Engineering Technology	1,051	1,149	959	826	765
<b><i>College of Engineering and Engineering Technology Total</i></b>	<b><i>4,042</i></b>	<b><i>3,894</i></b>	<b><i>3,670</i></b>	<b><i>3,538</i></b>	<b><i>3,767</i></b>
English & Foreign Languages	8,454	8,437	8,564	9,169	9,572
History	4,857	4,641	5,658	5,682	5,802
Mass Communications	3,819	3,976	4,059	4,107	4,105
Performing Arts	3,824	2,965	2,893	3,011	3,228
Social Sciences	8,068	7,822	7,900	8,463	8,699
Visual Arts	2,812	2,616	2,652	2,697	3,044
<b><i>College of Liberal Arts Total</i></b>	<b><i>31,834</i></b>	<b><i>30,457</i></b>	<b><i>31,726</i></b>	<b><i>33,129</i></b>	<b><i>34,450</i></b>
Graduate Nursing	338	553	522	553	615
Undergraduate Nursing	5,890	6,128	6,232	6,134	6,328
<b><i>College of Nursing Total</i></b>	<b><i>6,228</i></b>	<b><i>6,681</i></b>	<b><i>6,754</i></b>	<b><i>6,687</i></b>	<b><i>6,943</i></b>
Agriculture*	1,442	1,651	2,824	3,170	3,606
Biological & Envr Sciences*	8,895	9,208			
Biology & Health Sciences*			7,779	8,115	8,452
Chemistry	4,123	3,495	3,400	3,719	4,106
Math, Comp Sci, & Stat	12,075	11,939	11,762	12,153	12,027
Nutrition and Family Studies	2,790	2,354	2,067	2,465	2,282
Physics	1,918	1,646	1,724	1,919	1,879
<b><i>College of Science Total</i></b>	<b><i>31,243</i></b>	<b><i>30,293</i></b>	<b><i>29,556</i></b>	<b><i>31,541</i></b>	<b><i>32,352</i></b>

\*In Spring 2009 Environmental Science was moved from Biological & Environmental Sciences to Agriculture.



### Historical Spring SCH's by Department (continued)

	<u>2007</u>	<u>2008</u>	<u>2009</u>	<u>2010</u>	<u>2011</u>
General and Basic Studies	216	177	98	67	87
<b><i>Division of General and Basic Studies Total</i></b>	<b>216</b>	<b>177</b>	<b>98</b>	<b>67</b>	<b>87</b>
Freshmen Foundations		57	296	274	252
<b><i>Freshman Foundation Total</i></b>		<b>57</b>	<b>296</b>	<b>274</b>	<b>252</b>
Military Science		12	14	18	30
<b><i>Military Science Total</i></b>		<b>12</b>	<b>14</b>	<b>18</b>	<b>30</b>
<b><i>Total</i></b>	<b>100,899</b>	<b>98,588</b>	<b>98,006</b>	<b>103,098</b>	<b>105,275</b>

## Academic Year 2010 -2011 Average Teaching Load by Department

Accounting, Fin & Econ	20.20
Mgmt, Marketing and Gen Bus	20.09
<b><i>College of Business Total</i></b>	<b><i>20.14</i></b>
Educ Leadership & Instr Tech	25.29
Health & Human Performance	31.67
Psychology	27.08
Teacher Education	25.31
Student Tchng & Prof Educ Srvc	21.43
<b><i>College of Education Total</i></b>	<b><i>27.03</i></b>
Engineering	24.54
Engineering Technology	28.50
<b><i>College of Engineering and Engineering Technology Total</i></b>	<b><i>25.86</i></b>
English & Foreign Languages	25.57
History	25.11
Mass Communications	28.78
Performing Arts	29.65
Social Sciences	26.50
Visual Arts	24.82
<b><i>College of Liberal Arts Total</i></b>	<b><i>26.85</i></b>
Graduate Nursing	45.00
Undergraduate Nursing	33.33
<b><i>College of Nursing Total</i></b>	<b><i>33.69</i></b>
Agriculture	25.82
Biology & Health Sciences	28.62
Chemistry	26.78
Math, Comp Sci, & Stat	26.75
Nutrition and Family Studies	28.76
Physics	28.83
<b><i>College of Science Total</i></b>	<b><i>27.37</i></b>
<b><i>University Total</i></b>	<b><i>27.24</i></b>

Teaching load only reflects teaching load in organized class sections and does not reflect other required work duties such as course grading, curriculum development, accreditation, advising, research, public service and university service.

## Financial Aid

	<u>05-06</u>	<u>06-07</u>	<u>07-08</u>	<u>08-09</u>	<u>09-10</u>
Unduplicated Count of Students	10,393	9,828	9,776	9,969	10,358
Undergraduates Receiving Aid	6,702	6,201	6,400	6,556	6,978
% of Undergraduates Receiving Aid	75%	74%	77%	77%	79%
Amount of Undergraduate Aid	\$40,892,953	\$37,426,588	\$39,984,240	\$44,056,716	\$49,475,010
Graduates Receiving Aid	794	769	912	834	909
% of Graduates Receiving Aid	51%	52%	59%	54%	55%
Amount of Graduate Aid	\$5,550,945	\$4,545,992	\$5,615,722	\$6,029,461	\$6,775,767
Students Receiving Federal Aid	4,697	4,390	4,338	4,442	5,100
Amount of Federal Aid	\$29,7960,446	\$27,491,063	\$27,279,743	\$30,642,301	\$39,352,112

### Fall 2009 Full-Time First-Time UG Students Receiving Aid

<u>Type of Aid</u>	<u>% Receiving Aid</u>	<u>Average Amount</u>
Grants/Scholarships	71%	\$5,040
PELL Grants	34%	\$4,056
Federal Student Loans	38%	\$6,804

### Full-Time Average Annual Fees 2010-2011 (Fall and Spring Semesters)

	<u>Undergraduate</u> (15 hours)	<u>Graduate</u> (9 hours)
In-State Undergraduate Tuition & Fees	\$3,987	\$4,397
Out-of-State Undergraduate Tuition & Fees	\$11,659	\$12,069

### Student Charges 2010-2011 Academic Year

Room (based on semi-private dorm)	\$3,300
Board (maximum plan)	\$2,282

**Revenues**  
**Operating (Unrestricted) Fund**

	<u>Actual</u> <u>2008-2009</u>	<u>%</u>	<u>Actual</u> <u>2009-2010</u>	<u>%</u>	<u>Budgeted</u> <u>2010-2011</u>	<u>%</u>
<b>Revenues by Source</b>						
State Funds	\$43,479,359	65.9%	\$29,751,083	47.9%	\$28,021,413	44.1%
Interagency Transfers - ARRA			\$5,749,198	9.3%	\$9,210,526	14.5%
Self-Generated Funds	\$22,526,603	34.1%	\$26,606,231	42.8%	\$26,255,010	41.4%
<b>Total Revenues</b>	<b>\$66,005,962</b>	<b>100.0%</b>	<b>\$62,106,512</b>	<b>100.0%</b>	<b>\$66,486,949</b>	<b>100.0%</b>

**Expenditures**  
**Operating (Unrestricted) Fund**

	<u>Actual</u> <u>2008-2009</u>	<u>%</u>	<u>Actual</u> <u>2009-2010</u>	<u>%</u>	<u>Budgeted</u> <u>2010-2011</u>	<u>%</u>
<b>Expenditures by Function</b>						
Instruction	\$29,890,505	45.3%	\$26,507,344	42.7%	\$27,462,716	41.3%
Research	\$869,862	1.3%	\$2,898,630	4.6%	\$3,407,156	5.1%
Academic Support	\$6,640,597	10.0%	\$5,590,258	9.0%	\$5,587,631	8.4%
Student Services	\$4,229,407	6.4%	\$3,972,160	6.4%	\$3,963,163	6.0%
Institutional Services	\$7,767,754	11.8%	\$7,628,724	12.3%	\$7,536,593	11.3%
Scholarships/Fellowships	\$3,941,381	6.0%	\$4,278,333	6.9%	\$4,635,000	7.0%
Plant Operations/Maintenance	\$6,602,292	10.0%	\$5,394,862	8.7%	\$8,219,062	12.4%
Transfers out of agency	\$2,068,656	3.1%	\$1,813,673	2.9%	\$2,006,631	3.0%
Athletics	\$3,748,818	5.7%	\$3,342,003	5.4%	\$3,087,393	4.6%
Other	\$246,688	0.4%	\$680,525	1.1%	\$581,604	0.9%
<b>Total Expenditures</b>	<b>\$66,005,962</b>	<b>100.0%</b>	<b>\$62,106,512</b>	<b>100.0%</b>	<b>\$66,486,949</b>	<b>100.0%</b>

	<u>Actual</u> <u>2008-2009</u>	<u>%</u>	<u>Actual</u> <u>2009-2010</u>	<u>%</u>	<u>Budgeted</u> <u>2010-2011</u>	<u>%</u>
<b>Expenditures by Expense Category</b>						
Salaries	\$37,198,471	56.3%	\$35,922,430	56.4%	\$35,443,850	53.31%
Other Compensation	\$714,961	1.1%	\$693,676	1.1%	\$649,927	0.98%
Related Benefits	\$11,182,209	16.9%	\$10,932,120	16.9%	\$12,719,699	19.13%
Travel	\$238,270	.04%	\$86,018	0.4%	\$133,057	0.20%
Operating Services	\$3,883,626	5.9%	\$3,236,642	5.9%	\$4,188,606	6.30%
Supplies	\$712,242	1.1%	\$430,254	1.1%	\$733,139	1.10%
Professional Services	\$302,018	0.5%	\$159,779	0.4%	\$100,543	0.15%
Other Charges	\$8,262,568	12.5%	\$8,582,372	12.5%	\$8,607,496	12.94%
Interagency Transfers	\$2,068,656	3.1%	\$1,813,673	3.1%	\$2,006,631	3.02%
General Acquisitions	\$259,492	0.4%	\$153,850	0.4%	\$4,000	0.01%
Library Acquisitions	\$307,565	0.5%	\$83,437	0.5%	\$100,000	0.15%
Major Repairs	\$875,884	1.3%	\$12,259	1.3%	\$1,800,000	2.71%
<b>Total Expenditures</b>	<b>\$66,005,962</b>	<b>100.0%</b>	<b>\$62,106,512</b>	<b>100.0%</b>	<b>\$66,486,949</b>	<b>100.0%</b>

## Faculty/Staff

### Fall 2010 Full-Time Faculty by Rank

	<u>Tenured</u>	<u>On tenure track</u>	<u>Not on tenure track</u>	<u>Total</u>	<u>Percent</u>
Professors	61		1	62	19.6%
Associate Professors	52	1	1	54	17.0%
Assistant Professors	56	86	8	150	47.3%
Instructors			51	51	16.1%
<b>Total</b>	<b>169</b>	<b>87</b>	<b>61</b>	<b>317</b>	<b>100.0%</b>

### Fall 2010 Full-Time Faculty by Highest Degree

	<u>Tenured</u>	<u>On tenure track</u>	<u>Not on tenure track</u>	<u>Total</u>	<u>Percent</u>
Bachelors			1	1	0.3%
Masters	40	22	47	109	34.4%
Terminal Masters	12	10	7	29	9.1%
Doctorate	117	55	6	178	56.2%
<b>Total</b>	<b>169</b>	<b>87</b>	<b>61</b>	<b>317</b>	<b>100.0%</b>

### Fall 2010 Full-Time Faculty by Race and Gender

	<u>Men</u>	<u>Women</u>	<u>Total</u>	<u>Percent</u>
Asian	19	3	22	7.0%
Black, non-Hispanic	4	11	15	4.7%
Foreign	4	2	6	1.9%
Hispanic	2	4	6	1.9%
White, non-Hispanic	146	121	267	84.2%
Two or more races		1	1	0.3%
<b>Total</b>	<b>175</b>	<b>142</b>	<b>317</b>	<b>100.0%</b>

### Full-Time Equivalent Faculty

<b>10-11</b>	361.7
<b>09-10</b>	343.1
<b>08-09</b>	362.3
<b>07-08</b>	368.7
<b>06-07</b>	339.3
<b>05-06</b>	343.0
<b>04-05</b>	343.2

### Student to Faculty Ratio\*

<b>Fall 2010</b>	20 to 1
<b>Fall 2009</b>	21 to 1
<b>Fall 2008</b>	19 to 1
<b>Fall 2007</b>	20 to 1
<b>Fall 2006</b>	21 to 1
<b>Fall 2005</b>	22 to 1

\* (Full-Time students + 1/3 Part-Time students) / (Full-Time faculty + 1/3 Part-Time faculty)

### Fall 2010 Classes taught by Faculty Type

	<b>Dev</b>	<b>Lower Level</b>	<b>Upper Level</b>	<b>Graduate</b>	<b>Total</b>
Full-Time Faculty	2	851	736	252	1,841
Part-Time Faculty	36	164	72	19	291
<b>Total</b>	<b>38</b>	<b>1,015</b>	<b>808</b>	<b>271</b>	<b>2,132</b>

### Fall 2010 Employees by Occupational Activity

	<b>Full-Time</b>	<b>Part-Time</b>	<b>Total</b>	<b>Percent</b>
Primarily Instruction	317	126	443	49.2%
Executive/administrative/managerial	50	0	50	5.5%
Other professionals (support/service)	152	12	164	18.2%
Technical and paraprofessionals	11	1	12	1.3%
Clerical and secretarial	124	4	128	14.2%
Skilled crafts	5	0	5	0.6%
Service/Maintenance	97	2	99	11.0%
<b>Total</b>	<b>756</b>	<b>145</b>	<b>901</b>	<b>100.0%</b>

### Fall 2010 Employees by Race and Gender

	<b>Men</b>	<b>Women</b>	<b>Total</b>	<b>Percent</b>
American Indian/Alaska Native	1	1	2	0.2%
Asian	22	8	30	3.3%
Black, non-Hispanic	49	74	123	13.7%
Foreign, Non-Resident	6	3	9	1.0%
Hispanic	4	5	9	1.0%
White, non-Hispanic	305	422	727	80.7%
Two or more races		1	1	0.1%
<b>Total</b>	<b>387</b>	<b>514</b>	<b>901</b>	<b>100.0%</b>

## Facilities

	<u>Owned</u>	<u>Leased</u>	<u>Total</u>
Land Holdings	500.95 Acres	265.45 Acres	766.40 Acres
Building Gross Square Footage	1,485,292	344,096	1,829,388
Building Net Assignable Square Footage	1,026,552	265,289	1,291,841

## Net Assignable Space by Allocation Category

	<u>Square Feet</u>	<u>% Total</u>
Academic	520,983	54.7%
Administrative	63,204	6.6%
Athletics	68,184	7.2%
Auxiliary*	210,594	22.1%
Residential**	89,472	9.4%
<b>Total</b>	<b>952,437</b>	<b>100.0%</b>

\* Does not include 265,289 square feet for Burton Coliseum which is leased from Calcasieu Parish Police Jury and is used for basketball games and graduation twice a year.

\*\* Does not include 74,115 square feet for Burton Dorm which is currently closed.