



KINGDOM OF CAMBODIA
Nation Religion King

Ministry of Culture & Fine Arts

SUBJECT: Discovery of Gilded Bronze Pinnacle Face Tower 18N

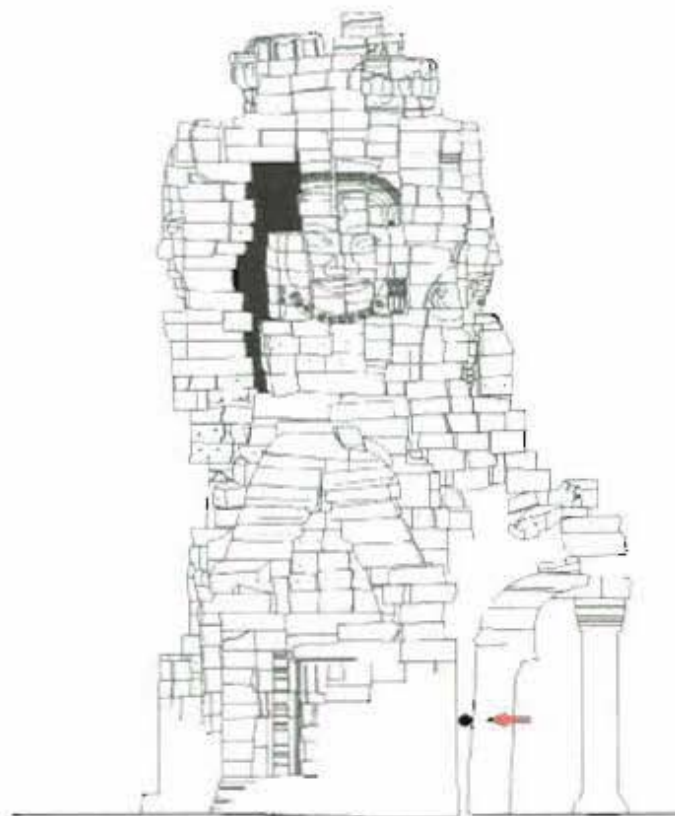
DATE & TIME: 25th August 2011 10:30 am

DESCRIPTION: Work is progressing on the consolidation of the base of Face Tower 18N which due to its structural stability had to be partially dismantled. The task of consolidating the lower layers of the sand stone blocks forming the base of the tower has required the removal of much of the fallen blocks and the clearing of debris that has accumulated around the tower. Three of the four bases which support the tower have been cleaned and consolidated. Work on the final base has been under way for the last week (22–25 August 2011).

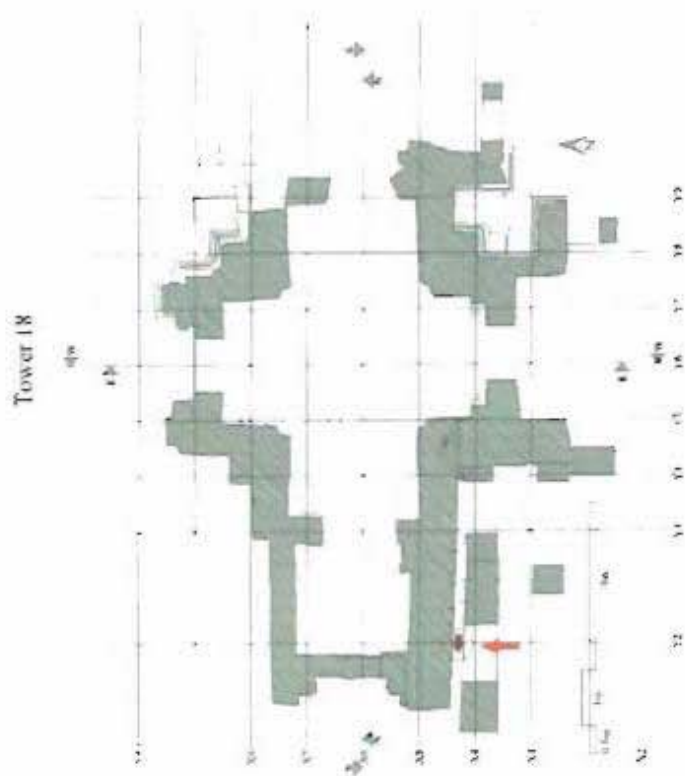


On 25th August 2011 around 10:30 am the work force was cleaning out a space between the Southwest section of the tower base and the adjacent structure to the South and the chef de groupe Mr Soeum noticed something glinting in this crevice about 1.25 metres from ground level. The Chef de Chantier, Mr Lo and the MCFA's Archaeologist Mr Mauth Sokha were called and under the direction of Architects Ritha and Chhiv the artifact was carefully removed. It was identified as a cast bronze? gilded pinnacle which, no doubt, had fallen from the top of Face Tower 18N. From its location there is no question of its origin as the pinnacle of Face Tower N18.

The team has been able to locate the stone blocks that make up the lotus capping to the tower upon which the pinnacle would have been placed. These stones will eventually be replaced once the tower reconstruction is complete,



West Elevation



Elevation and Plan of Face Tower N 18
Banteay Chhmar Temple



GILDED BRONZE PINNACLE

