

The History of the Northeast District

Rai Mordente
Kappa Kappa Psi
Northeast District Alumni Liaison
2003-2004

Adam Bates
Kappa Kappa Psi
Northeast District Alumni Liaison
2005-2006

A note from Brother Mordente: Please understand that this History of the Northeast District is in no way, shape, or form complete. There might be some mistakes when it comes to the list of Governors/Counselors and Councils. There is still much work to be done! I encourage every Brother and Sister to please talk with their Alumni and ask questions about our past! The Northeast District has so much to be proud of. There are many more interesting facts about our District that will come to light only if we Actives use our resources and the question the creators of our History, the Alumni

A note from Brother Bates: Choosing to expand Brother Mordente's District History led to a difficult dilemma – which facets of our District and Fraternity's past were most in need of further illumination? Having finished, I can reiterate to that this History of the Northeast District is still "in no way, shape or form complete." However, it is, one step closer, containing new information regarding early Chapters, traveling items, and influential and famous Brothers in the East. To continue the growth of this District History project, future historians must seek out documentation of the stories and traditions of the active and alumni Brothers within our District. Our history is alive today, here on the east coast, not entombed in the archives of Stillwater, Oklahoma.

The Districts

During World War II the District level was created at the National Convention of 1941. The National Constitution created eleven districts. The belief was that a District level would allow for a sense of National purpose and National unifying bond. The distance between chapters during this time was quite notable. Also many chapters were going inactive due to the war.

These districts would be reorganized due to expansion in 1949. The eleven districts were comprised of 45 active chapters of Kappa Kappa Psi and 18 chapters of Tau Beta Sigma¹ and their boundaries were based on divisions of state lines and region. Each district was designated with a Roman numeral one through eleven. Along with this reorganization it is noted that both Kappa Kappa Psi and Tau Beta Sigma shared the same boundaries and district numbers.

The National Chapter sought to reorganize these districts at the National Convention of 1955 due to the expansion of both organizations. This reorganization of the eleven districts attempted to give equal strength to each district. By 1969, the Districts were once more reorganized. There were now ten districts, one of which was an International District.²

Over the years the numeral naming system of the Districts and their reorganization lead to much confusion. The numeral designation system was changed to regional references in 1987. Also that National Convention under Kappa Kappa Psi National President Frank Stubbs and Tau Beta Sigma President Anne Cunningham Sheets, the Districts once more were reorganized. The latest redistricting created seven district boundaries. This regional name and boundary system is still in effect today.

¹ *The Podium* December 1950 pg. 3

² *The Podium* Spring 1981 pg. 28 by Rick Albani

History of the Northeast District

The first District Designation of the present day to include the Northeast was the Eastern District³. From 1949-1955 District X and District XI occupied the boundaries of the Northeast District. The reorganization of District Lines at 1955's National Convention caused Districts X and XI be redistricted to allow balance due to the expansion of both organizations.⁴ District X consisted of Connecticut, Maine, Massachusetts, New Hampshire, New Jersey, New York, Rhode Island, and Vermont. District XI consisted of Pennsylvania, Maryland, Delaware, District of Columbia, Virginia, and West Virginia. Both Districts agreed to meet together for Convention in 1958. This was also the first time that Tau Beta Sigma had appeared at any District Convention in the Northeast. By 1969 District IX took the place of Districts X and XI. In 1987 District IX was dubbed the Northeast District and continues with this designation to the present.



District X
1949-1955



District XI
1949-1955



District IX
1969-1987
Northeast District
1987- Present

³ Due to the fire damage of the Archives little is known of the Eastern District and its boundaries. However Raymond D. Shannon is named the Eastern District Governor in the Beta Zeta Petitioning Document.

⁴ *The Podium* May 1955 pg. 8

History of Kappa Kappa Psi in the Northeast District

There were many local band fraternities during the early stages of colonization and installation of Kappa Kappa Psi chapters. After receiving information of the National Fraternity, a band club at Pennsylvania State University showed interest. The first chapter of Kappa Kappa Psi present in the Northeast was the Zeta Chapter installed April 25, 1923. Many of the beginning chapters in the Northeast found most of their members in the R.O.T.C. Bands. Military recruitment would lead to the inactive status of many chapters during World War II. Once World War II ended many men came back to their respective chapters. However, the war took a toll on the chapter level for more than a fourth of the Brotherhood had been called to active duty⁵. Many chapters faced financial difficulties and were disheartened at the loss of their fellow comrades. Many chapters folded for good.

During the 1950's the role of expansion and revitalization became the most important aspect of the Fraternity. Many chapters flourished from Pennsylvania, Maryland and Virginia. Unfortunately, many new chapters folded within the first two years of activation due to the instability of their new band programs. Revitalization of old chapters became the District's priority in the 1970's and 1980's. A few early chapters were reinstalled to serve their bands. Some revitalization efforts failed and those chapters have remained inactive. From the 1980's to the present the Northeast District of Kappa Kappa Psi has expanded to having a chapter present in all states in its boundaries except for Vermont, and New Jersey.



The Zeta Chapter of Kappa Kappa Psi

⁵ 2003 Historical Snap shot of Kappa Kappa Psi

History of Tau Beta Sigma in the Northeast District

Tau Beta Sigma made its first appearance in the Northeast with a chapter at Long Island University. The Nu chapter was established February 11, 1949 under the sponsorship of Mrs. Esther Shannon, wife of Raymond D. Shannon. This chapter was only active until 1952. Once the Nu chapter went inactive, the Northeast was devoid of the sisterhood. Five years later a National Installation Team came to the Northeast to start two chapters of Tau Beta Sigma. The Beta Epsilon and Beta Eta chapters were the first established presence of Tau Beta Sigma on the Eastern seaboard. The women of these two chapters were present for the District Convention of 1958. With Beta Epsilon folding in 1958 expansion became the priority of Tau Beta Sigma in the Northeast. This need for growth resulted in an expansion boom during the 1960's. The resilience and dedication to expansion of these chapters allow Tau Beta Sigma to continue to be a strong and active force in the Northeast today.



*Naomi Viertel, Frances Centrowitz, Mrs. Raymond Shannon, sponsor;
Adele Nissenfeld, Madelon Feuerman.*

The Nu Chapter of Tau Beta Sigma

The Music of the Northeast District

- 1958 District X and XI Convention held the first ever District Intercollegiate Band.
- Vaclav Nelhybel conducted at the 1969 District Convention.
- The Kappa Kappa Psi *District IX Hymn* was composed by the Gamma Xi chapter in 1974. The hymn was nominated to be the National Hymn at convention in 1975. Since the hymn was not made the National Hymn, District IX made it the District's official song. This was sung at the end of District Convention at Banquets.
- The *Tau Beta Sigma National Hymn* was written by the Beta Eta Chapter and accepted as the National hymn in 1977.
- The *Kappa Kappa Psi National Hymn* was written by the Eta Gamma Chapter and accepted as the National hymn in 1995.

Publications of the Northeast District

The first publications from the present day Northeast District were just reports in *The Baton* and later *The Podium*. By 1970 the District publication of *Lines from IX* was created and distributed to the entire district. It was also the responsibility of the convention site hosts to create an un-official newsletter to be sent out throughout the year. In 1987 to coincide with the name change *Northeast Notes* became the official newsletter of the Northeast district. It is published twice a year

Lines from Nine Publishers

1970- Kappa Kappa Psi- Alpha Phi

1971- Kappa Kappa Psi- Alpha Omega

 Tau Beta Sigma- Gamma Omega

1972 Kappa Kappa Psi- Epsilon Iota

 Tau Beta Sigma- Gamma Chi

1973 Kappa Kappa Psi- Epsilon Nu

 Tau Beta Sigma- Delta Delta

1974

Unofficial Publications

1970- *The Mountain Dewer*- West Virginia University

1971- *The Pitt Stop*- University of Pittsburg

Convention Site:

1958 University of Virginia (Districts X and XI)	1986 University of Maine
1959 University of Pittsburg	1987 University of Connecticut
1969 University of Connecticut	1988-1992 Not Complete
1970 West Virginia University	1993 Syracuse University
1971 University of Pittsburg	1994 Virginia Tech
1972 Mansfield State College	1995 James Madison University
1973 Clarion University	1996 University of Massachusetts Amherst
1974 University of Massachusetts Amherst	1997 West Virginia University
1975 University of Maryland	1998 University of Connecticut
1976-1978 Not Complete	1999 Clarion University
1979- University of Maryland	2000 West Virginia University
1980- West Virginia University	2001 Syracuse University
1981 University of Massachusetts Amherst	2002 University of Pittsburg
1982 Kutztown University	2003 James Madison University
	2004 Kutztown University
	2005 University of Connecticut
	2006 Virginia State University

Travel Paddles of the Northeast District

The idea of Travel Paddles and Travel Items were encouraged to promote travel throughout the District.

The Traveling Baritone:

At the 1959 National Convention in Tallahassee, Florida, the Alpha Omicron Chapter at Texas Tech University presented the “Traveling Baritone” trophy to the National delegation. The baritone was an older silver-plated model that had been reconditioned, with a plate on the bell of the trophy which stated its name and nature. After being nationally adopted, the baritone was presented to the delegation of the Gamma Xi Chapter at the University of Maryland.

The Traveling Baritone was started to promote communication between chapters. Unlike many traveling items today, there were specific rules governing the transfer of the Baritone from university to university. These were actually voted on by the National delegation before the Traveling Baritone was adopted. A point system was adopted for Chapters hosting the Baritone. Distance traveled, number of Brothers present, and the “the type of program given to the [new] host Chapter” all earned the Chapter extra points. In 1959, it was decided that the Baritone would travel until the 1961 Convention at Wichita University, where assumedly the Chapter with the most “Traveling Baritone Points” would be recognized. A host Chapter had a year to hold on to the baritone before passing it on. Later on, however, a tradition of stealing the baritone from the host Chapter was established.

Detailed Account of the Baritone's Travels

After leaving the 1959 Convention in the hands of Gamma Xi delegate John Hillhase ("Jack Hillhouse" according to the 1961 Podium Article), the baritone visited 18 states and the District of Columbia before reaching the University of Maryland campus. The baritone visited the Universities of Baylor, Oklahoma, Oklahoma State, and Wichita along the way, with John taking pictures as proof of the visit. It later visited University of Michigan, University of Arkansas, and Ohio State University. Under Gamma Xi's possession, the Baritone traveled 3,000 miles.

Gamma Xi kept the Baritone for a year before presenting it to the Alpha Phi Chapter of Rutgers University. Gamma Xi Brother Bill Signor III passed the Baritone off to W. Dennis Stires, Alpha Phi President.

Rutgers kept the Baritone until the Spring of 1961 when it was presented to the Gamma Pi Chapter at Purdue University. During the transfer, accompanying documents which described the rules of the Traveling Baritone were lost. A 1961 Podium article states that the Brothers of Gamma Pi were trying to recover these materials before taking the Baritone on the road again. Whether the Baritone made it to the 1961 National Convention is currently unknown.

In 1963, Gamma Xi received the Traveling Baritone again through unknown means. They promptly presented it to the Beta Chi Chapter at the University of Virginia. Shortly after, Beta Chi folded and the Baritone was tucked away in band storage. In 1969, the band secretary found the baritone and contacted the University of Maryland. That December, 5 Maryland Brothers took a trip to Charlottesville to reclaim the artifact. After 6 years of disregard, the horn was showing signs of age. There was a dent, and the chain connecting the horn to its travel log was missing. Gamma Xi did what it could to repair it, polishing the horn and replacing the log's chain. Gamma Xi wrote an article in the Podium relating the Traveling Baritone. They expressed their eagerness to acquaint themselves with a new Chapter by presenting the heirloom, claiming the new slogan of the Maryland Marching band was "Do it, Traveling Baritone!"

Gamma Xi finally passed the Baritone off in October of 1970, in the World's first "Baritone Bowl" held at Mansfield University. The game took place on a "very, very, very muddy field at Mansfield State College." "At stake: absolutely nothing." Mansfield was scheduled to receive the Baritone regardless of the outcome of the game. The game resulted in a 7-7 tie, and the Traveling Baritone found a new home in Pennsylvania.



Gamma Xi, "Visiting team"



Epsilon Iota, "Home Team"

Epsilon Iota presented the Traveling Baritone to Epsilon Omicron at Wagner College on December 12, 1970. Wagner held onto the Baritone until the 1971 District IX Convention on the University of Pittsburgh campus, where it is reasonable to speculate that they presented it to Alpha Omega.

In any case, Alpha Omega had the Traveling Baritone in 1973 for the National Convention in Storrs, Connecticut. At the time, Alpha Omega was choosing to strictly follow the national rules and regulations of the Traveling Baritone. As a result, they entrusted the safe-keeping of the heirloom to Delta Omicron, the host Chapter. During the course of the Convention, the Baritone went missing. This is evidenced by Alpha Omega Secretary Mark Featon's letter to the National Office later in the year, voicing his anger over the disappearance. The National Office turned a deaf ear to Alpha Omega's concerns, assuring them that the Baritone was in good hands and that they were resolved of all responsibility.

Through the personal accounts of Brother Steve Berkowitz, Gamma Xi Alumnus, it appears that Gamma Xi participated in some "skullduggery" with the help of Delta Omicron, stealing the Baritone over the course of the convention. After reclaiming the Baritone, it is unclear who Gamma Xi next presented it to. However, over the next several years the Traveling Baritone finally made its way out of the Northeast.

After receiving the Traveling Baritone in 1978 from Zeta Gamma, Baylor University contacted the National Office with the news that the baritone was in bad shape. They offered to have it reconditioned, which the National Council happily agreed to. An article written from the perspective of the Traveling Baritone was later written, in which the Baritone announced that it would be leaving its friends at Baylor at the upcoming National Convention in Atlanta, Georgia.

Chapters who have received the Traveling Baritone

1959	Alpha Omicron (Texas Tech) <i>Creators of the Traveling Baritone</i>
1959-1960	Gamma Xi (University of Maryland)
1960-1961	Alpha Phi (Rutgers University)
1961-1962	Gamma Pi (Purdue University)
1962-1963	Gamma Xi (University of Maryland)
1963-1969	Beta Chi (University of Virginia)
1969-1970	Gamma Xi (University of Maryland)
1970	Epsilon Iota (Mansfield University)
1970-1971	Epsilon Omicron (Wagner College)
1971-1973	Alpha Omega (University of Pittsburgh) *
1973	Gamma Xi (University of Maryland)
1873-1976	????
1976	Psi (UCLA)
1976-1977	Alpha Omicron (Texas Tech)
1977-1978	Beta Gamma (Texas Lutheran University)
1978-1979	Beta Alpha (Baylor University)
1979-Present	????

* Speculation that Epsilon Omicron passed the Baritone to Alpha Omega. However, AO is known to have had the Baritone at the 1973 National Convention.

** Speculation that Gamma Xi stole and took the Baritone back from the 1973 National Convention, with the help of Delta Omicron

The Traveling Drumhead: This drumhead was passed around the District as a means of communication. Each chapter that received it drew on a logo of their school.

Clue Bus II:

A traveling item started by Andrea Straka, Eta Alpha Alumnus of the Alpha Kappa class. The Clue Bus is a toy bus with an open interior. After receiving the bus, it is customary for the Chapter to modify or add to the bus in some way. Chapters have added items to the interior (boxers, tea packets, key chains, small stuffed animals), or decorating the exterior (University Stickers and Pins, drawing and painting on the bus body).

The large percentage of the Chapters in the Northeast District have hosted the Clue Bus, and are represented on it – Omicron, Alpha Omega, Eta Alpha, Eta Beta, Eta Omicron, Delta Omicron, Lambda Nu, Gamma Xi, Theta Upsilon, Iota Delta, Epsilon Upsilon. Notable individual Brothers represented include Vice President of Student Affairs Adam Cantley and Vice President for Colonization & Membership Malinda Matney. Clue Bus II has visited multiple district conventions and the 1999 National Convention in St. Louis, Missouri.



The District Flags

The tradition that the Northeast District began when the first District IX flag was presented was to have this prize stolen. The chapter that stole the flag got to keep it. Many Alumni went to great lengths to take the District Flag. After the name change in 1987 the District IX flag was given as a gift to the Gamma Xi Chapter of Kappa Kappa Psi. It resides in their home, the Reckord Armory on the University of Maryland campus, to this day.

District IX Flag: This flag was adopted in 1975. The logo of the Northeast Seaboard is on a field of red with the letters of Tau Beta Sigma and Kappa Kappa Psi.



The Northeast District Flag: This flag was adopted in 1989/1990. The Northeast Seaboard logo is featured on a field of blue. The names of Tau Beta Sigma and Kappa Kappa Psi are featured. This flag is currently missing in action.



Raymond D. Shannon – Early Guiding Spirit of the Northeast District:

Kappa Kappa Psi has been blessed with 10 incredible Founding Fathers, all of which have made great impacts on the musical world.

However, it is undeniable that history shows particular bias to some more than others. For example, A. Frank Martin, “Mr. Kappa Kappa Psi,” has had very well documented contributions in the musical field due to his tenure as National Executive Secretary within the fraternity. But many other founding fathers left Oklahoma A&M and entered musical professions, and their careers and achievements have been less readily available to interested Brothers.

The following is an attempt to bring light to one of our “forgotten” founding fathers, recounting his achievements and making a case for how he carried the ideals of Kappa Kappa Psi with him throughout the rest of his life.



Education

Founding Father Raymond D. Shannon was the Governor of the Eastern District. He received his B.S. in 1921 from Oklahoma A&M. He was a trumpet soloist for the college band, an active member of the men’s glee club and men’s quartet. He was also co-founder of the Dramatic Fraternity, Theta Alpha Phi. In the fall of 1921, he was the featured male soloist with the Redpath Lyceum Bureau quartet. He later taught dramatics and music in Oklahoma and was the first to organize an all Girls High School Band. Shannon did his graduate work at Northwestern University. In 1926, he received his M.A. from Columbia University. For the next three years he was music director in the Lincoln School of Teachers College, Columbia University. At the same time he became a member of the National Music Fraternity, Phi Mu Alpha and National Honorary Education Fraternity, Phi Delta Kappa.

Life & Career

During the 1930’s Shannon stayed involved with music. He helped organize music departments with twenty boards of education in New York. In his spare time he directed a community chorus located in Gibson, New York.

In 1940, Raymond D. Shannon accepted the task of the organizing the Music Department of Long Island University from scratch. He was extremely successful. In

1941, a Spring Music Festival was held in which the Long Island music ensembles performed. However, later that year Shannon chose to leave the University to aid in the war effort. He served as social director to the U.S.O. at Fort Monroe, VA. Unfortunately, the Long Island University Music Department faded into obscurity upon his departure.

Shannon returned to Long Island University in 1946, where he was able to resurrect the Music Department. This time, he was able to grow his program into one with a full faculty. Professor Renee Fisher joined the program in the fall of 1947, and Professor William Eicher and Mr. Jonah Binder being hired in September 1948.

Upon his return to the University, Shannon became much more than a local band director, blossoming into a major public figure in the New York community. In 1947, the Brooklyn Dodgers brought the pennant back to New York City. For the ensuing celebration, Shannon and Long Island University were chosen to lead the festivities out of all of the programs in New York. The caption from a Long Island newspaper illustrates the scope of this honor:



“Professor Shannon leading Long Island University Band and a chorus of over 100,000 Brooklyn voices in the National Anthem... [marking] the first time the University Band was featured over a radio...”

September 26, 1947

As a founding father of Kappa Kappa Psi, Shannon was keenly aware of the positive impact a Chapter would have on his program. Raymond D. Shannon was responsible for the installation of the Beta Zeta Chapter of Kappa Kappa Psi and the Nu Chapter of Tau Beta Sigma, and acted as sponsor for Beta Zeta. His wife, Esther, served as the sponsor of Nu Chapter of Tau Beta Sigma. She was often seen at receptions for the band and was very involved with her chapter.

Raymond D. Shannon’s contributions to the fraternity were not limited to Long Island. He and his wife both served pivotal roles in shaping the fraternity on the eastern seaboard. The Shannon’s served simultaneously in the developing Eastern District, with Raymond as the District Governor of Kappa Kappa Psi and Esther as the District Counselor of Tau Beta Sigma.

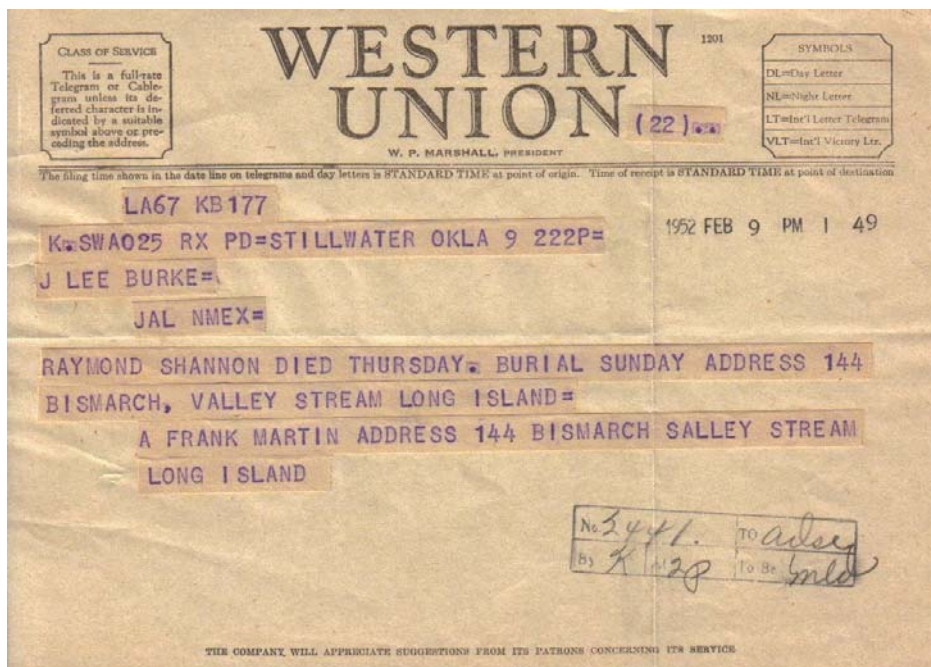
After battling a terrible illness, Raymond Shannon died at the age of 52. He passed away at Long Beach Memorial Hospital, Long Island, New York. He left behind his wife and his daughter Mary Lou.

Legacy

As Brothers of the Northeast District, there are times we can feel distanced from Kappa Kappa Psi's rich history. Stillwater is a vague and mysterious site for pilgrimages, a 20 hour drive, so far removed from our region, even our culture. The direct connections that other Districts have to our Fraternity's beginnings are largely unavailable to us.

Raymond D. Shannon is a figure that the Northeast District can look to as uniquely our own. His home is the Northeast. He is our founding father. He is our Guiding Spirit. At a time when our region of the country was sparsely populated with Chapters, Shannon served as a local figure for Brothers to strive to be like. His enthusiasm and skill in his profession, instilled in him by Bohumil Makovsky himself, earned him fame in both the musical world and the New York community. The Shannon's tenures as the Eastern District Governor and Counselor provided powerful advocates for our organizations when the District most desperately needed it. While Shannon was Governor, the entire country experienced a colonization boom, which he likely played a pivotal role in.

Upon Shannon's passing at the age of 52, his friends and Brothers were united in remembrance of their friend. The Stillwater Archives have the original telegram that was sent to Brother A. Frank Martin by Brother J. Lee Burke. Separated by thousands of miles and decades of time spent apart, the instant rekindling of their Bond of Brotherhood serves as an inspiration to all and a reminder of the foundations Kappa Kappa Psi was build on.



Kappa Kappa Psi District Governors

1949

Raymond D. Shannon (Eastern District)

1950

Raymond D. Shannon (District X)
Robert L. Arthur (District XI)

1951

Raymond D. Shannon (District X)
Robert L. Arthur (District XI)

1952

Raymond D. Shannon (District X)
Robert L. Arthur (District XI)

1957

W. Eldridge Lowe (District XI)

1962

Alan E. Gillespie (District X)

1963

Acton Ostling (District IX)

1964

Allan E. Gillespie (District X)

1970 (District IX)

Jack Lipphardt

1971-1973

Allan E. Gillespie

1975-1977

Allan E. Gillespie

1979-1981

Rick Albani

1982-1983

Don Wilcox

1983-1985

John Newson

1987-1989

Melvin Miles

1989-1991

Al Saloky

1991-1993

Pat Rooney

1993-1995

Debra Eakins
George Parks (1994-1995)

1995-1997

Debra Eakins
Dana Rothlisberger

1997-2003

Debra Eakins

2002

Marie Burleigh
John Laverty

2003

Marie Burleigh
John Laverty

2004

Marie Burleigh

Tau Beta Sigma District Counselors

1949

Mrs. Ester Shannon (District X)

1950

Mrs. Ester Shannon (District X)

1951

Mrs. Ester Shannon (District X)

1952

Mrs. Ester Shannon (District X)

1957

1962

Mrs. Henry Romersa (District XI)

1963

Ann McMillen Colbert (District XI)

1964

Mrs. Patricia Gillespie

1970 (District IX)

Natalie S. Hartzell

1972

Natalie S. Hartzell

1971

1974

Jean Matthew

1981

Year?

Kathy Rodeffer

Year?

Sue Carr

1989-1991

Suzanne Sturgis

1994

Cathy Miles

Year?

Nicole Knisley

Year?

Melanie LeBlanc

Year?

Melanie Meehan

2001

Maisha Davis

2002

Maisha Davis

2003

Cathy Miles

2004

Cathy Miles

Kappa Kappa Psi District Officers:

1958

President: John Pickeral (Beta Chi)
Vice President: Frances Helmczi (Alpha Omega)
Secretary Treasurer: Lowell Honaker (Beta Chi)

1969

President: Steven Swank
Vice President: Michael Zinn
Secretary Treasurer: William Trusheim

1970

President: William Trusheim (Alpha Phi)
Vice President: Richard Leepson (Omicron)
Secretary Treasurer: Charles Schlotter (Alpha Omega)
Member at Large: Moishe Pepic Gelman (Delta Omicron)

1971

President: Peter Glass (Delta Omicron)
Vice President: Bill Luzader (Omicron)
Secretary Treasurer: David Hill (Alpha Phi)
Member at Large: Bob Boiselle (Epsilon Nu)
Alternate Member at Large: Hank Amann (Gamma Xi)

1972

President: Jerry Somazze (Omicron),
Michael Vetere
Vice President: Jim Seidel (Epsilon Iota)
Secretary Treasurer: Robert Allison (Delta Omicron)

1973

President: Ken Finn (Alpha Omega)
Vice President: Alan Saloky (Epsilon Nu)
Secretary Treasurer: Wayne Rush (Zeta Mu)
Member at Large: Steve Berkowitz

1974

President: Steve Berkowitz (Gamma Xi)
Vice President: Mike Dearn (Epsilon Nu)
Secretary Treasurer: Jim D'Annabile (Zeta Mu)
Member at Large: Tom Libbey (Epsilon Upsilon)

Tau Beta Sigma District Officers:

1969

President: Susan Mahn
Vice President: Zavolia Dortch

1970

President TBS: Susan Mahn (Gamma Kappa)
Vice President: Zavolia Dortch (Beta Eta)
Secretary: Jan Baker (Gamma Omega)

1971

President: Sandy Konefal (Gamma Omega)
Vice President: Diane Trask (Gamma Omega)
Secretary Treasurer: Jacqueline Brown (Beta Eta)

1972

President: Margaret Spearly (Gamma Chi)
Vice President: Libby LaFramboise (Gamma Kappa)
Secretary Treasurer: Dolores Gill (Beta Eta)

1973

President: Kay Long (Gamma Chi)
Vice President: Sheila Cnartkoff (Delta Delta)
Secretary Treasurer: Coral Naggy (Delta Beta)

1974

President: Kay Long (Gamma Chi)
Vice President: Shelia Chartkoff (Delta Delta)
Secretary Treasurer: Dolores Gill (Beta Eta)