


MPS SENIOR MANAGEMENT

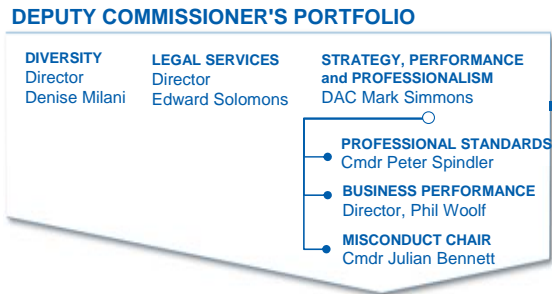
September/October
2011

COMMISSIONER



Bernard
Hogan-Howe

**COMMISSIONER'S
CHIEF OF STAFF**
Caroline Murdoch





**DEPUTY
COMMISSIONER**



Tim Godwin

Key


-  Management Board Members
-  Senior Management Team

**SPECIALIST CRIME
CENTRAL OPERATIONS**



Assistant
Commissioner
Lynne Owens

**SPECIALIST
OPERATIONS**



Assistant
Commissioner
Cressida Dick

**OLYMPICS /
PARALYMPICS**



Assistant
Commissioner
Chris Allison

**TERRITORIAL
POLICING**



Assistant
Commissioner
Ian
McPherson

**DIRECTORATE OF
RESOURCES**




Director
Anne McMeel

**DIRECTORATE OF
PUBLIC AFFAIRS**



Director
Dick Fedorcio

**DIRECTORATE OF
INFORMATION**



Director
Ailsa Beaton

Specialist Crime

- CONFIDENTIAL & SENSITIVE INVESTIGATIONS**
DAC Sue Akers
- OPERATIONS**
A/DAC Allan Gibson
- BUSINESS SUPPORT**
Director Mark Thomson
- INTELLIGENCE & COVERT POLICING**
Cmdr Mark Streater
- FORENSIC SERVICES**
Director Gary Pugh
- OLYMPIC INTELLIGENCE**
Cmdr Sue Wilkinson
- ORGANISED CRIME**
Cmdr Martin Hewitt
- SPECIALIST CRIME INVESTIGATION**
Cmdr Simon Foy

Central Operations

- OPERATIONS**
DAC Rose Fitzpatrick
- BUSINESS SERVICES**
Director Bev Butterworth
- CRIMINAL JUSTICE**
A/Cmdr Steve Bloomfield
(ACC Sue Fish takes up post on 03/10/2011)
- PUBLIC ORDER & OPERATIONAL SUPPORT**
Cmdr Simon Pountain
- SPECIALIST FIREARMS & ROADS POLICING**
Cmdr David Martin

PROTECTION & SECURITY
DAC Janet Williams

SENIOR NATIONAL CO-ORDINATOR TERRORIST INVESTIGATIONS
DAC Stuart Osborne

BUSINESS SERVICES
Director Brian Sweeting

PROTECTION COMMAND
Cmdr Peter Loughborough

SECURITY COMMAND
Cmdr Michael Wood

SO15 CT COMMAND
Cmdr Richard Walton

BUSINESS SERVICES
Director Bev Butterworth

OLYMPIC POLICING CO-ORDINATION
Cmdr Richard Morris

OLYMPICS GOLD
Cmdr Robert Broadhurst

OLYMPICS SILVER
Cmdr Michael Johnson

OPERATIONS
DAC Stephen Kavanagh

CRIME & CUSTOMER STRATEGY
Cmdr Steve Rodhouse

MSC CHIEF OFFICER
Lorraine Woolley

NORTH AREA CMDR
Cmdr Makhдум Chishty

NORTH EAST AREA CMDR
Cmdr Steve Watson

NORTH WEST AREA CMDR
Cmdr Christine Jones

PUBLIC CONTACT
Cmdr Tony Eastaugh

SAFER TRANSPORT
Cmdr Adrian Hanstock

SOUTH EAST AREA CMDR
Cmdr David Zinzan

SOUTH WEST AREA CMDR
Cmdr Maxine de Brunner

TP DEVELOPMENT
Director, Nina Cope

TP OPERATIONAL RESOURCING
Director, Mark Gilmartin

WESTMINSTER AREA CMDR
Cmdr Simon Bray

FINANCE SERVICES
Director Nicholas Rogers

PROPERTY SERVICES
Director Jane Bond

CUSTOMER & COMMERCIAL SERVICES
Director Caroline Mortimer

PEOPLE SERVICES
Director Majella Myers

PROCUREMENT SERVICES
Director Lee Tribe

PROGRAMME INFORMATION & INFORMATION MANAGEMENT
Assistant Director
Lucy Dunn

DEPUTY DIRECTOR OF PUBLIC AFFAIRS
Chris Webb

CHIEF PRESS OFFICER
Assistant Director
Ed Stearns

INTERNAL COMMUNICATION
Assistant Director
Jim O'Donnell

PUBLICITY
Assistant Director
Stephanie Day

INFORMATION SERVICES
Deputy Director of Information
David Wish

SECURITY, STRATEGY & PERFORMANCE
Deputy Director of Information
Andrew Watson

HEAD OF BUSINESS & ENTERPRISE ARCHITECTURE
Simon Hill

OLYMPICS ICT PROGRAMME and CORPORATE PROJECTS PORTFOLIO
Steve Whatson

