



UNIVERSAL YARN

PATTERN COLLECTION: WOMEN



PATTERN NO.

Free

PATTERN NAME

Wysteria Shawl

SKILL LEVEL

Intermediate

FINISHED MEASUREMENTS

Length: 32"

Width: 70"

MATERIALS

Yarn: 4 – 100g/600yd balls

Universal Yarn *Swiss Mohair*
(60% acrylic, 20% mohair, 20%
nylon) color 2503 Ram

Needles: US Size 6 (4.0 mm) 24"
circular needles OR SIZE TO
OBTAIN GAUGE

GAUGE

21 sts x 28 rows in St st, blocked

**Take your time to check for
correct gauge.**

ABBREVIATIONS

dec	decrease
inc	increase
K	knit
Maint	maintain
Patt	pattern
RS	right side
st(s)	stitch(es)
WS	wrong side

Knit. Relax. Smile. Repeat!

2010 © Universal Yarn, Inc.

All rights reserved.

www.universalyarn.com

This pattern may not be reproduced for business, trade or sale.

Note: Work all patterns as charted.
WS rows are uncharted: purl all WS rows.

SHAWL

Cast on 360 sts, do not join.

Knit 1 row (WS).

Work even in Garter st for 6 more rows.

Next row (WS): Knit, inc 6 sts evenly across – 366 sts.

Next row (RS): K5, work row 1 of Wysteria Chart to last 5 sts, end K5.

Maint Garter border, work even in patt until piece measures 10” from cast on, ending after a RS row.

Purl 1 WS row, dec 3 sts evenly across —363 sts.

Next row (RS): K5, work row 1 of Climbing Vines Chart, end K5.

Work even in patt as set until piece measures 22”, ending after a WS row.

Next row (RS): K5, work row 1 of Terrace chart, end K5.

Work even in patt as set until piece measures 31 ½”, ending after a WS row.

Next row (RS): Knit.

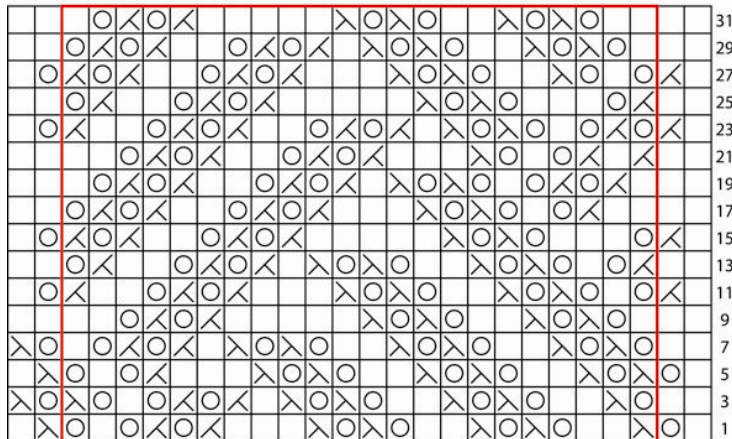
Work even in Garter st for 7 more rows.

Bind off all sts loosely.

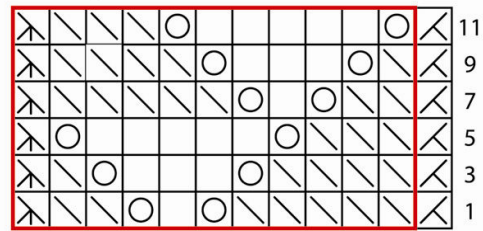
FINISHING

Weave in all ends. Block.

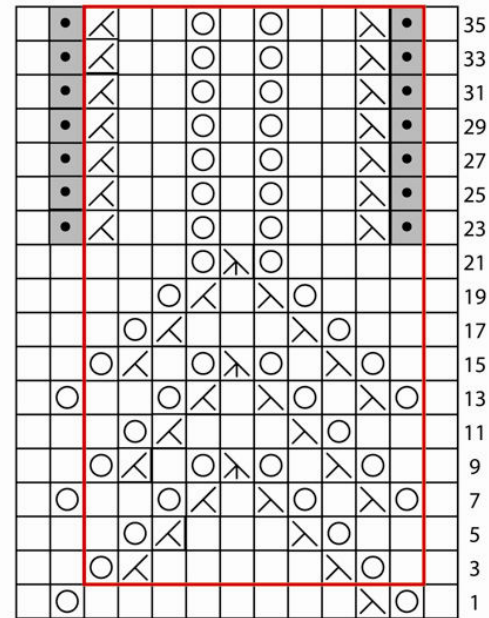
Wysteria Chart



Climbing Vines Chart



Terrace Chart



Key

-  Knit
-  Purl
-  K2tog
-  Yarnover
-  SSK
-  Sl 2 sts tog kswise, K1, P2SSO

Knit. Relax. Smile. Repeat!

2010 © Universal Yarn, Inc.

All rights reserved.

www.universalyarn.com

This pattern may not be reproduced for business, trade or sale.