



Autumn Leaves (knit)



GAUGE

17 sts and 23 rows = 4" [10 cm] in stocking st.

INSTRUCTIONS

Cast on 31 sts.

Knit 3 rows, noting first row is WS.

1st row: (RS). K3. *yo. K2. ssk. K2tog. K2. yo. K1. Rep from * twice more. K1.

2nd row: K1. Purl to last st. K1.

3rd row: K2. *yo. K2. ssk. K2tog. K2. yo. K1. Rep from * twice more. K2.

4th row: As 2nd row.

5th to 8th rows: Rep 1st to 4th rows.

9th to 12th rows: Knit.

Rep last 12 rows for pat until work from beg measures approx 62" [157.5 cm], ending on an 11th row of pat.

Cast off knitwise (WS).

Fringe: Cut 15" [38 cm] lengths of yarn. Taking 4 strands tog, knot into fringe evenly across each end of Scarf. Trim fringe evenly. **BERNAT**

MEASUREMENTS

Approx 7" x 62" [18 x 157.5 cm].

MATERIALS

Bernat® Mosaic (100 g /3.5 oz; 191 m/209 yds)

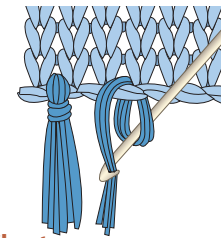


44222
(Envy)

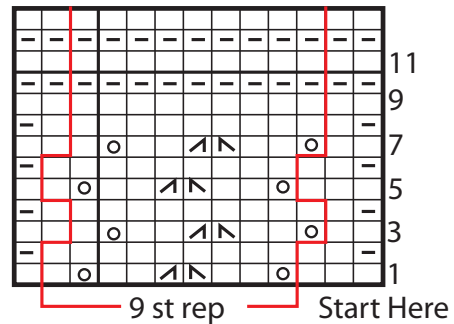
2

balls

Size 5.5 mm (U.S. 9) knitting needles **or size needed to obtain gauge.**



Chart



Key

□ = Knit on RS rows. Purl on WS rows.

▣ = Purl on RS rows. Knit on WS rows.

○ = yo

▤ = K2tog

▥ = ssk

ABBREVIATIONS

www.bernat.com/abbreviations

Approx = Approximately.

Beg = Beginning.

K = Knit.

K2tog = Knit next 2 stitches together.

Pat = Pattern.

Rep = Repeat.

RS = Right side.

Ssk = Slip next 2 stitches knitwise one at a time. Pass them back onto left-hand needle, then knit through back loops together.

St(s) = Stitch(es).

Tog = Together.

WS = Wrong side.

Yo = Yarn over.