

308 Red-rumped Swallow



Red-rumped Swallow. Adult (17-IV).

RED-RUMPED SWALLOW (*Hirundo daurica*)

IDENTIFICATION

18-20 cm. Glossy dark blue upperparts; rusty brown neck and rump; streaked pale underparts; long outermost tail feathers.

SIMILAR SPECIES

Recalls a **Barn Swallow**, which lacks pale rump and neck band and has chestnut on the head. **House Martin** lacks chestnut on the head and has white rump.

House Martin



B a r n
Swallow

SEXING

Sexes with very similar plumage, but length of the outermost tail feathers can be an useful character to sex this species: **male** with the outermost tail feather longer than 100 mm; distance between tips of longest and shortest tail feathers longer than 50 mm. **Female** with the outermost tail feather shorter than 92 mm; distance between tips of longest and shortest tail shorter than 50 mm. **Juveniles** cannot be sexed.

AGEING

2 types of age can be recognized:

Juvenile with dull upperparts, mainly head feathers; tertials and wing coverts with white buff tips; dull grey tail and flight feathers; short and rounded outermost tail feathers (shorter than 80 mm); buff brown neck and very pale rump.

Adult with metallic blue upperparts; tertials and wing coverts without white buff tips; glossy grey tail and flight feathers; long and pointed outermost tail feathers (longer than 80 mm); rusty brown neck and rump.

After the **postbreeding/postjuvenile** moult, ageing is not possible using plumage characters.

MOULT

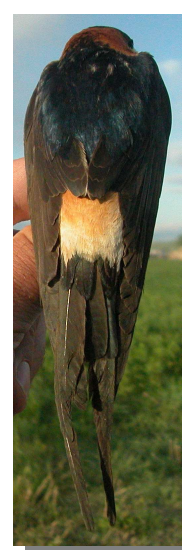
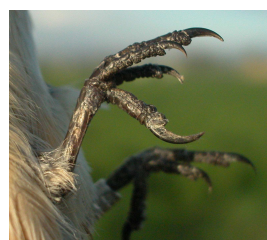
Complete **postbreeding** and **postjuvenile** moults, which can start in Europe and finish in the wintering quarters.

PHENOLOGY

I	II	III	IV	V	VI	VII	VIII	IX	X	XI	XII

STATUS IN ARAGON

Summer visitor, very scarce in the Region with a few number of breeding pairs in mountainous areas.



Red-rumped Swallow. Pattern of tail, legs and upperparts.

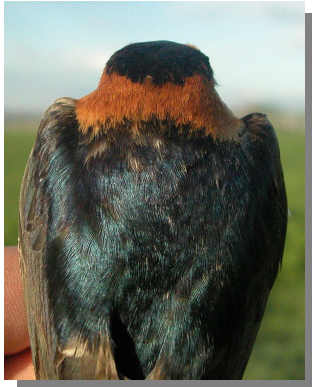
308 Red-rumped Swallow



Red-rumped Swallow. Head pattern: adult (17-IV).



Red-rumped Swallow. Adulto: pattern of wing (17-IV).



Red-rumped Swallow. Upperpart pattern: adult (17-IV).



Red-rumped Swallow. Pattern of throat and breast: adult (17-IV).



Red-rumped Swallow. Length of the outermost tail feathers: adult (17-IV).