

333 Whinchat



Whinchat. Spring. Adult. Male (16-IV).

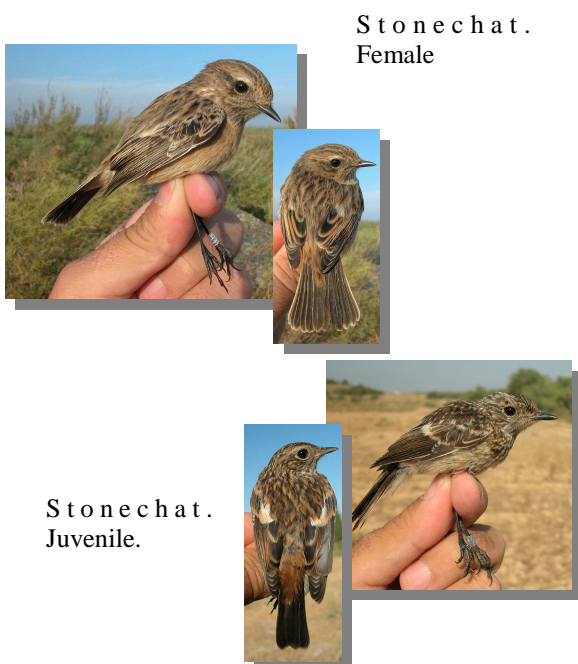
WHINCHAT (*Saxicola rubetra*)

IDENTIFICATION

12-13 cm. Brown upperparts, spotted dark; head with white supercilium, white in **male**, yellowish in **female**, brown wing, with white patch on inner coverts; dark tail with white base.

SIMILAR SPECIES

Similar to **female** and **juveniles Stonechat**, without white supercilium, lacks white patch on base of the tail feathers and without spotted uppertail coverts.



Stonechat.
Female

Stonechat.
Juvenile.

SEXING

Male in **breeding** plumage with brown-black ear coverts; pure white supercilium; tail feathers with a pronounced demarcation between black and white areas; without dark spots on breast; some wing coverts with pure white on bases; wing longer than 79 mm. **Female** with brownish ear coverts; buff whitish supercilium; tail feathers with bad defined demarcation between dark brown and white areas; most of the birds with dark spots on breast; some wing coverts with pale patches on bases but not pure white; wing shorter than 72 mm. In **autumn**, **juveniles** and **1st year** birds can be sexed by pattern of inner greater coverts: **male** with three or more feathers with white patch on tips; **female** with three or less feathers with white patch on tips; tail pattern like **adults**.

AGEING

4 types of age can be recognized:

Juvenile with fresh plumage; inside of upper mandible pinkish or yellow.

1st year autumn, if wing coverts have been moulted, then with moult limit between changed and retained feathers (**CAUTION:** moult limit can be between median coverts); tail feathers with pointed tips; pale colour inside of upper mandible.

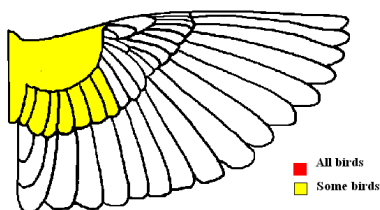
2nd year spring only in birds with pale colour inside of upper mandible; **adults** and **2nd year** have two generation of feathers on the wings due to **prebreeding** moult, but in **2nd year males** moult limit between changed inner greater coverts and juvenile retained outer greater coverts and primary coverts is very distinct (**CAUTION:** in **females** this moult limit is very difficult to see); primary coverts in **males** with small white patches on bases.

Adult in **autumn** without moult limit on wing feathers; tail feathers with rounded tips; dark colour inside of upper mandible; in **spring**, in **males**, moult limit between moulted inner greater coverts and unmoulted outer greater coverts and primary coverts is not very distinct (**CAUTION:** in **females** this limit is very difficult to see); primary coverts in **males** with large white patches on bases.

333 Whinchat

MOULT

Complete **postbreeding** moult, usually finished in September before migration. Partial **postjuvenile** moult which is very variable with birds moulting all body feathers and a variable number of wing coverts before migration and others, when migration starts, with still juvenile body and lesser and median wing coverts; finished or suspended in August-September. Both types of age have a **prebreeding** moult including body feathers, lesser and median coverts and, usually, some greater coverts.



Whinchat
Extent
of
postjuvenile
moult.

■ All birds
■ Some birds

PHENOLOGY

I	II	III	IV	V	VI	VII	VIII	IX	X	XI	XII

STATUS IN ARAGON

Scarce breeders in Central Pyrenees; widely distributed on passage.



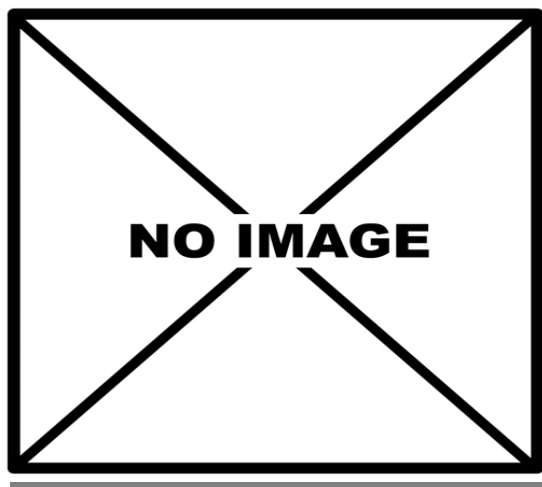
Whinchat. Spring. Adult. Female (16-IV)



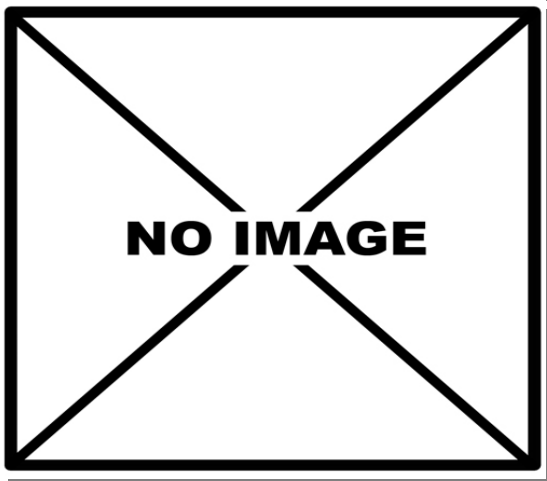
Whinchat. Spring. 2nd year. Male (16-IV)



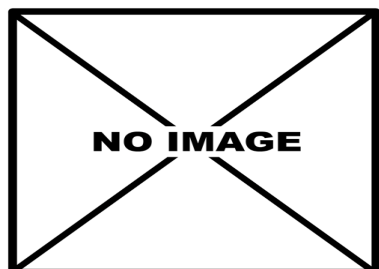
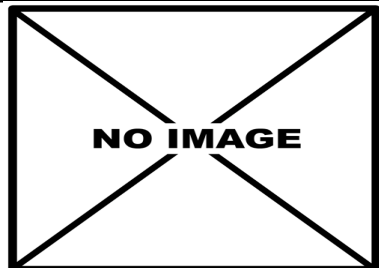
Whinchat. Spring. 2nd year. Female (16-IV)



Whinchat. Spring. Juvenile. Male ()

333 Whinchat

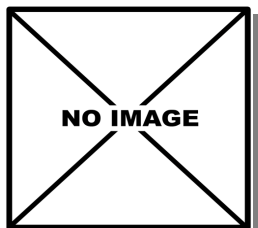
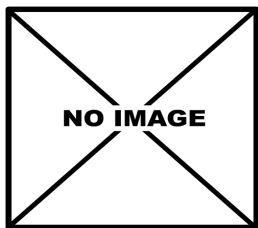
Whinchat. Spring. Juvenile. Male ()

Whinchat.
Spring.
Juvenile.
Head
pattern: top
male ();
bottom
female ().Whinchat.
Spring.
Adult. Head
pattern: top
male (16-
IV); bottom
female (16-
IV).

Whinchat. Spring. Adult. Breast pattern: left male (16-IV); right female (16-IV).

Whinchat.
Spring. 2nd
year. Head
pattern: top
male (16-
IV); bottom
female (16-
IV).

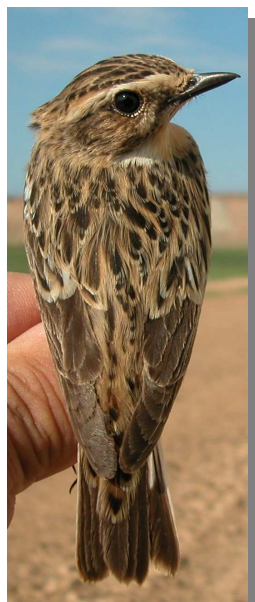
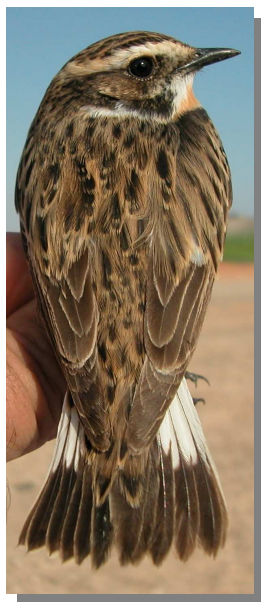
Whinchat. Spring. 2nd year. Breast pattern: left male (16-IV); right female (16-IV).

333 Whinchat

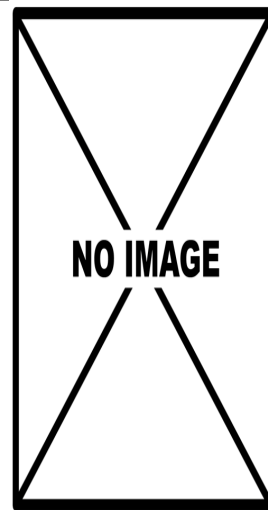
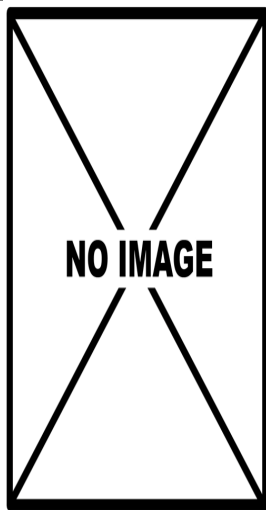
Whinchat. Spring. Juvenile. Breast pattern: left male (); right female ().



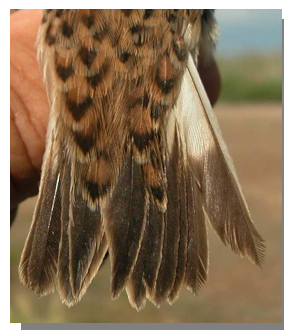
Whinchat. Spring. Adult. Upperpart pattern: left male (16-IV); right female (16-IV).



Whinchat. Spring. 2nd year. Upperpart pattern: left male (16-IV); right female (16-IV).



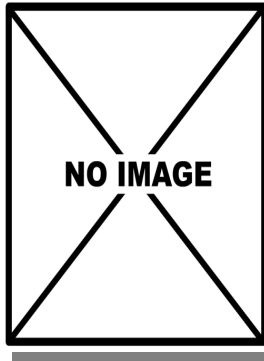
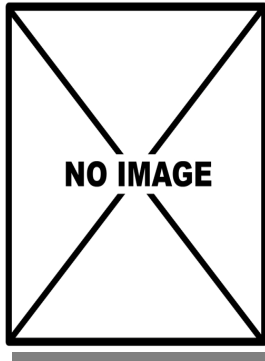
Whinchat. Spring. Juvenile. Upperpart pattern: left male (); right female ().



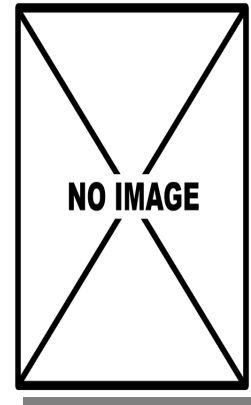
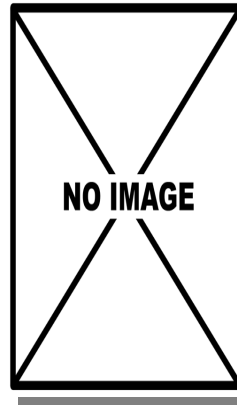
Whinchat. Spring. Adult. Tail pattern: left male (16-IV); right female (16-IV).



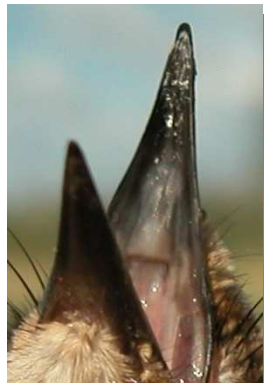
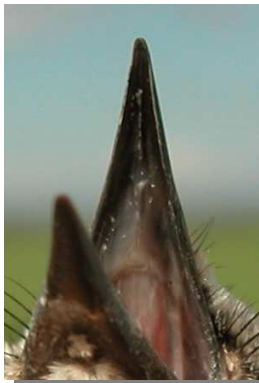
Whinchat. Spring. 2d year. Tail pattern: left male (16-IV); right female (16-IV).

333 Whinchat

Whinchat. Spring. Juvenile. Tail pattern: left male (); right female ().



Whinchat. Spring. Juvenile. Colour inside of upper mandible: left male (); right female ().



Whinchat. Spring. Adult. Colour inside of upper mandible: left male (16-IV); right female (16-IV).



Whinchat. Spring. Adult. Male: pattern of wing coverts (16-IV).



Whinchat. Spring. 2nd year. Colour inside of upper mandible: left male (16-IV); right female (16-IV).



Whinchat. Spring. Adult. Female: pattern of wing coverts (16-IV).

333 Whinchat



Whinchat. Spring. 2nd year. Male: pattern of wing coverts (16-IV).



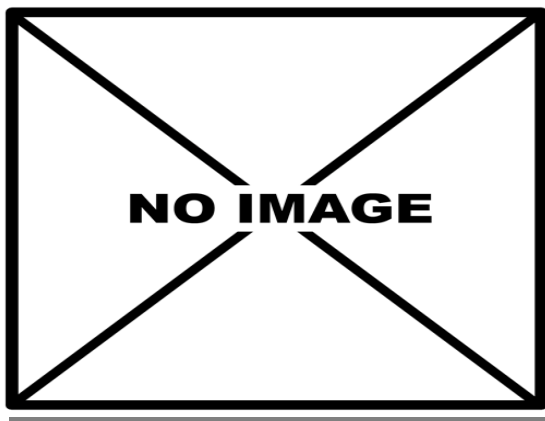
Whinchat. Spring. Juvenile. Female: pattern of wing coverts (02-VII).



Whinchat. Spring. 2nd year. Female: pattern of wing coverts (16-IV).



Whinchat. Spring. Adult. Male: pattern of primary coverts (16-IV).



Whinchat. Spring. Juvenile. Male: pattern of wing coverts ().



Whinchat. Spring. Adult. Female: pattern of primary coverts (16-IV).

333 Whinchat



Whinchat. Spring. 2nd year. Male: pattern of primary coverts (16-IV).



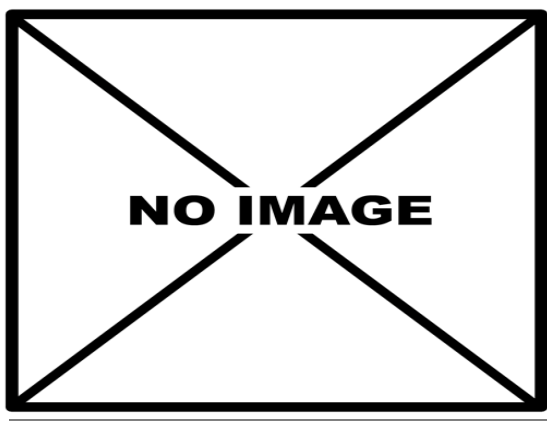
Whinchat. Spring. Juvenile. Female: pattern of primary coverts (02-VII).



Whinchat. Spring. 2nd year. Female: pattern of primary coverts (16-IV).



Whinchat. Spring. Adult. Male: pattern of wing (16-IV).



Whinchat. Spring. Juvenile. Male: pattern of primary coverts ().



Whinchat. Spring. Adult. Female: pattern of wing (16-IV).

333 Whinchat



Whinchat. Spring. 2nd year. Male: pattern of wing (16-IV).



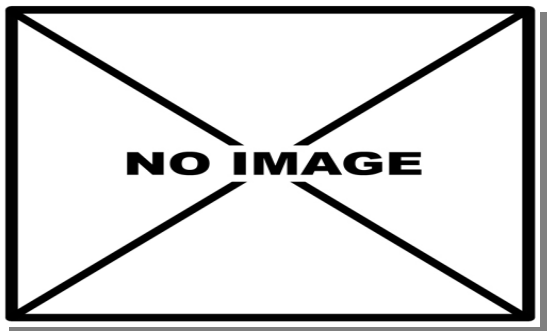
Whinchat. Autumn. Adult. Male (10-IX).



Whinchat. Spring. 2nd year. Female: pattern of wing ().



Whinchat. Autumn. Adult. Female (24-IX).



Whinchat. Spring. Juvenile. Male: pattern of wing ().



Whinchat. Autumn. 1st year. Male (12-IX).



Whinchat. Spring. Juvenile. Female: pattern of wing (02-VII).

333 Whinchat



Whinchat. Autumn. 1st year. Female (09-IX).



Whinchat.
Autumn.
Adult. Head
pattern: top
male (10-
IX); botton
female (24-
IX).



Whinchat.
Autumn. 1st
year. Head
pattern: top
male (12-
IX); botton
female (09-
IX).



Whinchat. Autumn. Adult. Breast pattern: left male (10-IX); right female (24-IX).

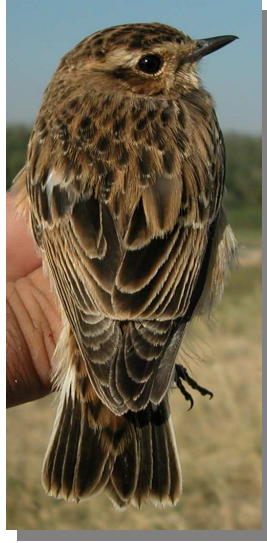
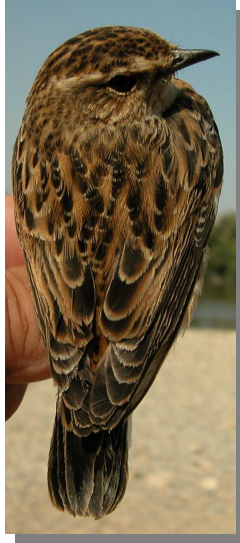


Whinchat. Autumn. 1st year. Breast pattern: left male (12-IX); right female (09-IX).

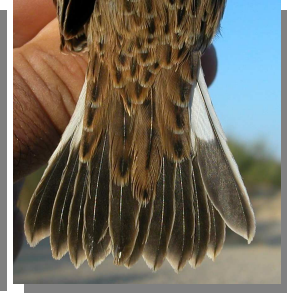
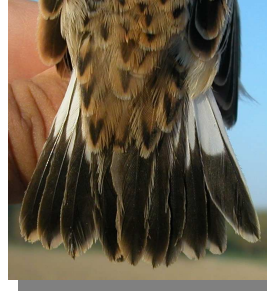


Whinchat. Autumn. Adult. Upperparts pattern: left male (10-IX); right female (24-IX).

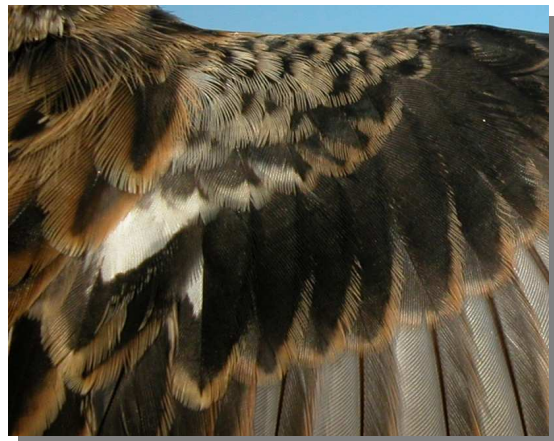
333 Whinchat



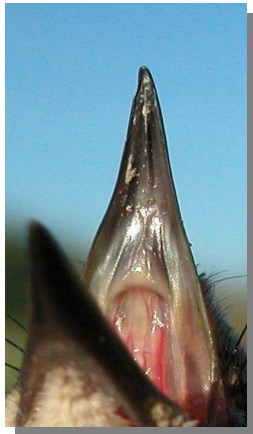
Whinchat. Autumn. 1st year. Upperparts pattern: left male (12-IX); right female (09-IX).



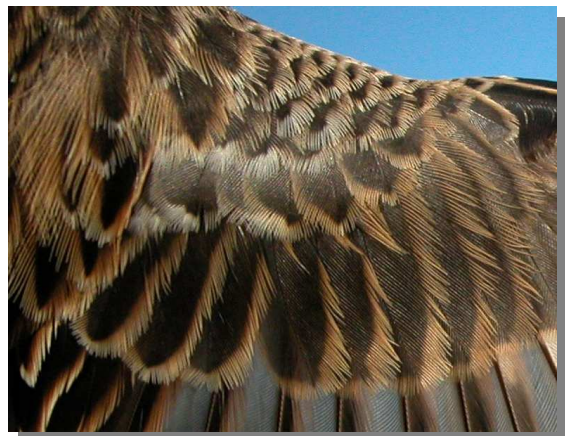
Whinchat. Autumn. 1st year. Tail pattern: left male (12-IX); right female (09-IX).



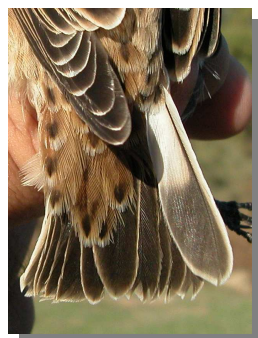
Whinchat. Autumn. Adult. Male: pattern of wing coverts (10-IX).



Whinchat. Autumn. Colour inside of upper mandible: left adult (24-IX); right 1st year (09-IX).

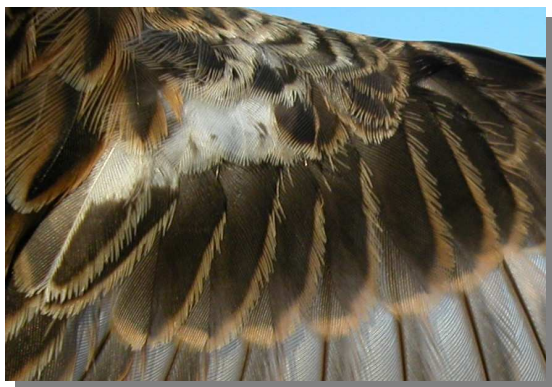


Whinchat. Autumn. Adult. Female: pattern of wing coverts (24-IX).



Whinchat. Autumn. Adult. Tail pattern: left male (10-IX); right female (24-IX).

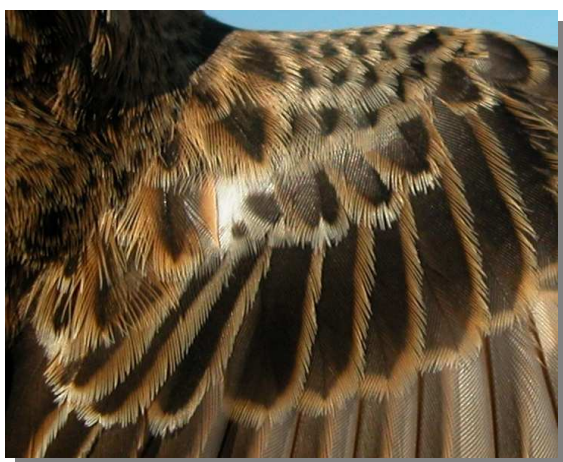
333 Whinchat



Whinchat. Autumn. 1st year. Male: pattern of wing coverts (12-IX).



Whinchat. Autumn. Adult. Female: pattern of primary coverts (24-IX).



Whinchat. Autumn. 1st year. Female: pattern of wing coverts (09-IX).



Whinchat. Autumn. 1st year. Male: pattern of primary coverts (12-IX).

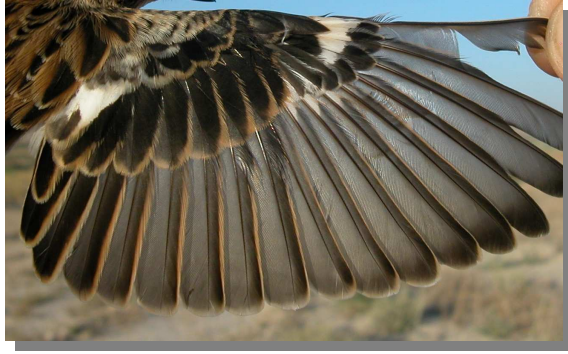


Whinchat. Autumn. Adult. Male: pattern of primary coverts (10-IX).



Whinchat. Autumn. 1st year. Female: pattern of primary coverts (09-IX).

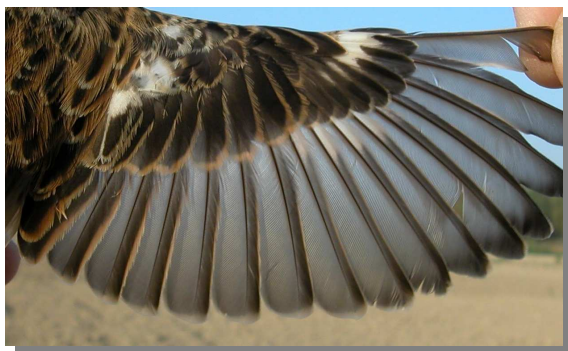
333 Whinchat



Whinchat. Autumn. Adult. Male: pattern of wing (10-IX)



Whinchat. Autumn. Adult. Female: pattern of wing (24-IX)



Whinchat. Autumn. 1st year. Male: pattern of wing (12-IX).



Whinchat. Autumn. 1st year. Female: pattern of wing(09-IX).