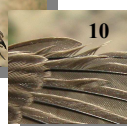


367 Subalpine Warbler



Subalpine Warbler. Spring. Adult. Male (01-VI).



Top Spectacled Warbler: left female; right juvenile; left juvenile Sardinian Warbler.

SUBALPINE WARBLER (*Sylvia cantillans*)

IDENTIFICATION

12-13 cm. **Male** with grey head and upperparts; breast orange; iris and eye-ring reddish. **Female** duller than **male**, with brownish upperparts; whitish underparts; white eye-ring and grey-brown iris. Wing between 57-64 mm; 10th primary with the same length than primary coverts; both sexes with a white moustache and pale legs.

SIMILAR SPECIES

Male recalls a **Dartford Warbler** which lacks white moustache and has breast with white spots. **Female** recalls a **Spectacled Warbler** which has buff wings, lacks pale moustache and grey on head. **Juveniles** can be more difficult to determine: **Spectacled Warbler** has greater coverts, tertials and secondaries with broad buff edges; some with wing shorter than 55 mm. **Sardinian Warbler** has darker upperparts; flanks grey and no buff; fluffy plumage; 10th primary usually longer than primary coverts.



Dartford Warbler

SEXING

In **spring**, **male** with grey upperparts, red eye-ring, white moustache, reddish breast; **female** with duller colours, white eye-ring, pale throat and breast (**CAUTION**: some **2nd year males** are very similar to **adult females**); **juveniles** cannot be sexed using plumage characters. In **autumn**, after **postjuvenile** moult, a limited sexual dimorphism in **1st year** birds can be found: **male** usually grey with faint orange-brown tinge below; **female** brown and without orange-brown tinge below (**CAUTION**: most of the birds are intermediate and sexing only **male-like** birds are recommended); **adults** as birds in **spring**.

AGEING

4 types of age can be recognized:

Juvenile with fresh plumage; without moult limit; iris grey-olive.

1st year autumn with moult limit on greater coverts; dark iris.

2nd year spring with moult limit on wing between moulted feathers and juvenile retained, with brown edges; the outermost tail feathers with brownish tinge.

Adult without moult limits on the wing; the outermost tail feathers white; iris reddish.

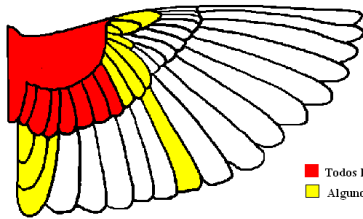
CAUTION: in **spring**, after **prebreeding** moult, both types of age have moult limits; some **2nd year** have a complete moult being indistinguishable from **adults**.

367 Subalpine Warbler



MOULT

Complete **postbreeding** moult, usually finished in September. Partial **postjuvenile** moult, including lesser and median coverts and most of the greater coverts; some birds can moult all greater coverts, tertials and some flight feathers; usually finished in September. Both types of age have a **prebreeding** moult which can be complete in **juveniles** and most of the wing in **adults**.



■ Todos los ejemplares
■ Algunos ejemplares

Subalpine Warbler. Extent of postjuvenile moult.

PHENOLOGY

I	II	III	IV	V	VI	VII	VIII	IX	X	XI	XII

STATUS IN ARAGON

Summer visitor. Widely distributed throughout the Region, absent from the highest mountains and deforested areas.



Subalpine Warbler. Spring. 2nd year. Male (05-VII).



Subalpine Warbler. Spring. 2nd year. Female (21-V).



Subalpine Warbler. Pattern of tertials and length of 10th primary



Subalpine Warbler. Spring. Adult. Female (11-VI).



Subalpine Warbler. Spring. Juvenile (13-VII).

367 Subalpine Warbler



Subalpine Warbler. Spring. Adult. Pattern of head, colour of eye-ring and iris: top male (01-VI); bottom female (11-VI).



Subalpine Warbler. Spring. Breast pattern: top left 2nd year male (05-VII); top right 2nd year female (21-V); left juvenile (13-VII).



Subalpine Warbler. Spring. 2nd year. Pattern of head, colour of eye-ring and iris: top male (05-VII); bottom female (21-V).



Subalpine Warbler. Spring. Juvenile: Pattern of head, colour of eye-ring and iris (13-VII).

Subalpine Warbler. Spring. Adult. Upperpart pattern: left male (01-VI); right female (11-VI).

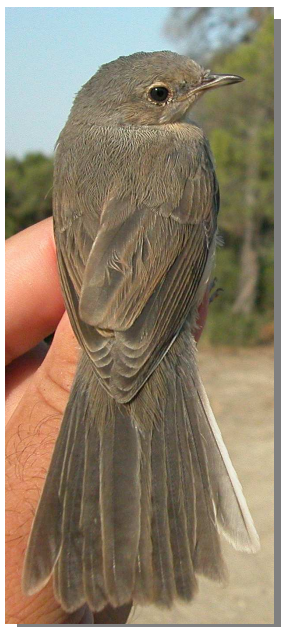


Subalpine Warbler. Spring. Adult. Breast pattern: left male (01-VI); right female (11-VI).

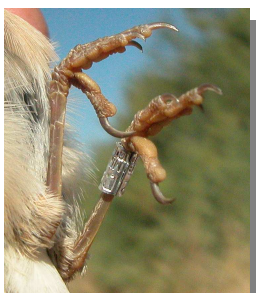
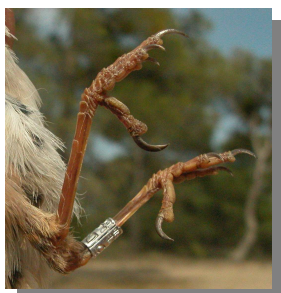
367 Subalpine Warbler



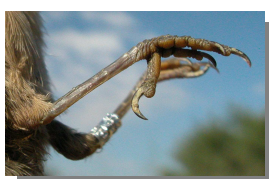
Subalpine Warbler. Spring. Adult. Tail pattern: left male (01-VI); right female (11-VI).



Subalpine Warbler. Spring. Upperpart pattern: top left 2nd year male (05-VII); top right 2nd year female (21-V); left juvenile (13-VII).



Subalpine Warbler. Spring. Tail pattern: top left 2nd year male (05-VII); top right 2nd year female (21-V); left juvenile (13-VII).



Subalpine Warbler. Colour of legs: top left adult (25-V); top right 1st year (06-VIII); left juvenile (07-VII).

367 Subalpine Warbler



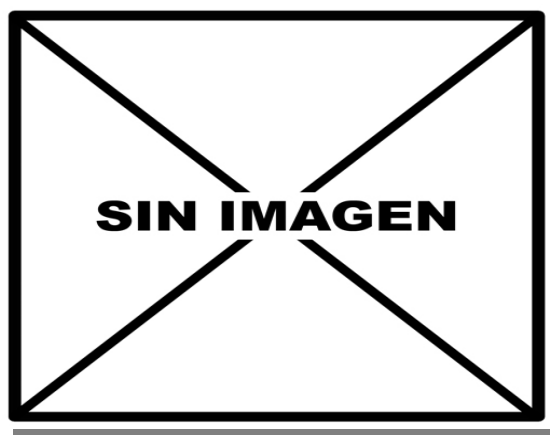
Subalpine Warbler. Spring. Adult. Male: pattern of wing (01-VI).



Subalpine Warbler. Spring. Juvenile: pattern of wing (13-VII).



Subalpine Warbler. Spring. Adult. Female: pattern of wing (11-VI).



Subalpine Warbler. Autumn. Adult. Male ().



Subalpine Warbler. Spring. 2nd year. Male: pattern of wing (05-VII).



Subalpine Warbler. Autumn. Adult. Female (09-VIII).



Subalpine Warbler. Spring. 2nd year. Female: pattern of wing (21-V).

367 Subalpine Warbler



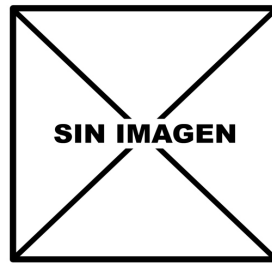
Subalpine Warbler. Autumn. 1st year. Male (15-VIII).



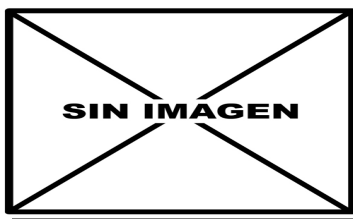
Subalpine Warbler. Autumn. 1st year. Head pattern and iris colour: top male (15-VIII); bottom female (15-VIII).



Subalpine Warbler. Autumn. 1st year. Female (15-VIII).



Subalpine Warbler. Autumn. Adult. Breast pattern: left male (); right female (09-VIII).



Subalpine Warbler. Autumn. 1st year. Head pattern and iris colour: top male (); bottom female (09-VIII).



Subalpine Warbler. Autumn. 1st year. Breast pattern: left male (15-VIII); right female (15-VIII).

367 Subalpine Warbler



Subalpine Warbler. Autumn. Adult. Upperpart pattern: left male (); right female (09-VIII).



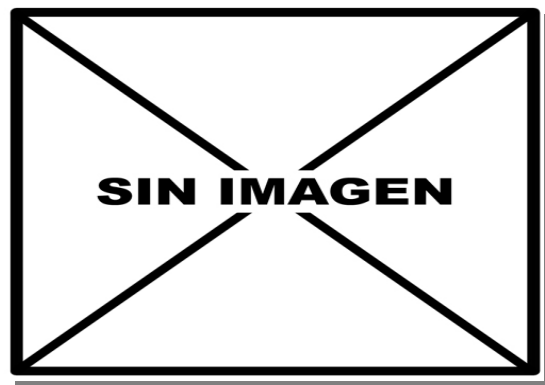
Subalpine Warbler. Autumn. 1st year. Upperpart pattern: left male (15-VIII); right female (15-VIII).



Subalpine Warbler. Autumn. Adult. Tail pattern: left male (); right female (09-VIII).



Subalpine Warbler. Autumn. 1st year. Tail pattern: left male (15-VIII); right female (15-VIII).



Subalpine Warbler. Autumn. Adult. Female. Post-juvenile moult: pattern of wing ().

367 Subalpine Warbler



Subalpine Warbler. Autumn. Adult. Female. Post-juvenile moult: pattern of wing (09-VIII).



Subalpine Warbler. Autumn. 1st year. Male. Post-juvenile moult: pattern of wing (15-VIII).



Subalpine Warbler. Autumn. 1st year. Female. Postjuvenile moult: pattern of wing (15-VIII).