

445 Cirl Bunting



Cirl Bunting. Spring. Adult. Male (25-IV).

CIRL BUNTING (*Emberiza cirlus*)

IDENTIFICATION

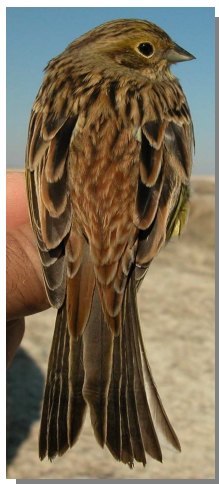
14-18 cm. **Adults** with brown upperparts; yellowish underparts; brown-olive rump; flanks with brown tinge; bluish bill. **Male** with black throat and green-grey breast. **Female** without black throat and breast with diffuse streaks. **Juveniles** with greenish lesser coverts.

SIMILAR SPECIES

Male is unmistakable. **Female** similar to **female Yellowhammer** which has chestnut rump and a pale patch on nape. **Female Ortolan Bunting** has brown rump and brown-yellowish underparts. **Juveniles Cirl Bunting** are similar to **Rock Bunting** which have grey lesser coverts; **Yellowhammer** have chestnut rump; **Ortolan Bunting** have brown-yellowish throat and breast; **Corn Bunting** is bigger (16-19 mm) and without white on outermost tail feathers.



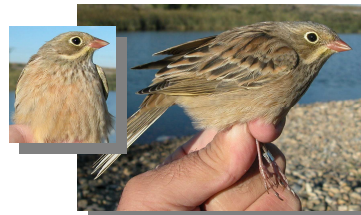
Corn Bunting



Yellowhammer. Female



Rock Bunting. Juvenile



Ortolan Bunting. 1st year

SEXING

In **breeding** plumage, **male** with black chin and throat; wing 75-84 mm. **Female** with white-yellowish chin and throat; wing 71-79 mm. After **postbreeding/postjuvenile** moults, **male** has black feathers on chin and throat with white-buff tips; reddish upperparts. **Female** has chin and throat buff-yellowish, little or no reddish on upperparts (**CAUTION:** some **1st year males** are similar than **adult females** so it is necessary a right ageing). **Juveniles** cannot be sexed using plumage characters.

AGEING

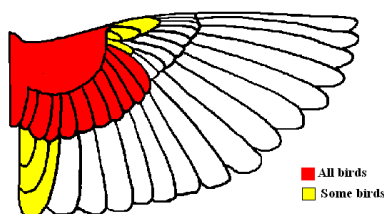
3 types of age can be recognized:
Juvenile similar to **females** but greyer; with fresh plumage.
1st year autumn/2nd year spring with moult limits on wing between tertials or between tertials and secondaries; tail feathers with pointed tips due to wear (sometimes moulted the central pair).
Adult without moult limits on wing; tail feathers with rounded tips.

445 Cirl Bunting



MOULT

Complete **postbreeding** moult; usually finished in October. Partial **postjuvenile** moult including body feathers, lesser, median, all greater coverts and sometimes tertials and central tail feathers; usually finished in October. Both types of age have a **prebreeding** moult including only body feathers.



C i r l
B u n t i n g .
Extent of
postjuvenile
moult.



Cirl Bunting. Spring. 2nd year. Male (02-V).

PHENOLOGY

I	II	III	IV	V	VI	VII	VIII	IX	X	XI	XII

STATUS IN ARAGON

Resident. Widely distributed throughout the Region, absent from the highest areas of the Pyrenees and the most deforested zones of the Ebro Basin.



Cirl Bunting. Spring. Adult. Female (03-IV).



Cirl Bunting. Spring. 2nd year. Female (02-V).



Cirl Bunting. Spring. Juvenile (27-VI).

445 Cirl Bunting



Cirl Bunting. Spring. Adult. Head pattern: left male (25-IV); right female (03-IV).



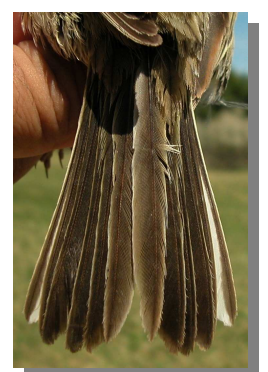
Cirl Bunting. Spring. Adult. Breast pattern: left male (25-IV); right female (03-IV).



Cirl Bunting. Spring. Head pattern: top left 2nd year male (02-V); top right 2nd year female (02-V); left juvenile (27-VI).



Cirl Bunting. Spring. Adult. Tail pattern: left male (25-IV); right female (03-IV).



Cirl Bunting. Spring. Breast pattern: top left 2nd year male (02-V); top right 2nd year female (02-V); left juvenile (27-VI).



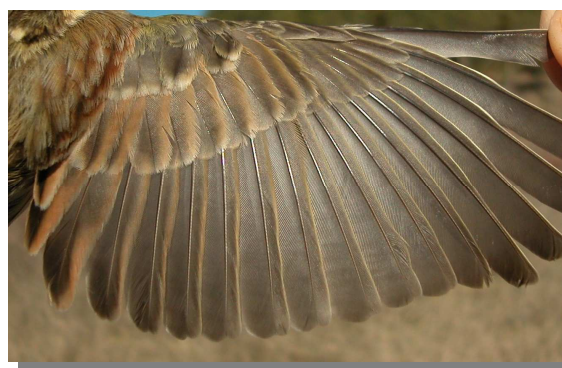
Cirl Bunting. Spring. Tail pattern: top left 2nd year male (02-V); top right 2nd year female (02-V); left juvenile (27-VI).

445 Cirl Bunting



Cirl Bunting. Spring. Adult. Male: pattern of wing (25-IV).

Cirl Bunting. Spring. Adult. Upperparts pattern: left male (25-IV); right female (03-IV).



Cirl Bunting. Spring. Adult. Female: pattern of wing (03-IV).



Cirl Bunting. Spring. 2nd year. Male: pattern of wing (02-V).



Cirl Bunting. Spring. Upperparts pattern: top left 2nd year male (02-V); top right 2nd year female (02-V); left juvenile (27-VI).

445 Cirl Bunting



Cirl Bunting. Spring. 2nd year. Female: pattern of wing (02-V).



Cirl Bunting. Autumn. Adult. Female (26-XII).



Cirl Bunting. Spring. Juvenile: pattern of wing (27-VI).



Cirl Bunting. Autumn. 1st year. Male (25-IX).

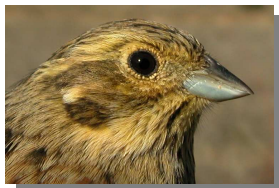


Cirl Bunting. Autumn. Adult. Male (10-X).



Cirl Bunting. Autumn. 1st year. Female (27-XI).

445 Cirl Bunting



Cirl Bunting. Autumn. Adult. Head pattern: left male (10-X); right female (26-XII).



Cirl Bunting. Autumn. 1st year. Head pattern: left male (25-IX); right female (27-XI).



Cirl Bunting. Autumn. Adult. Upperparts pattern: left male (10-X); right female (26-XII).



Cirl Bunting. Autumn. Adult. Breast pattern: left male (10-X); right female (26-XII).



Cirl Bunting. Autumn. 1st year. Upperparts pattern: left male (25-IX); right female (27-XI).

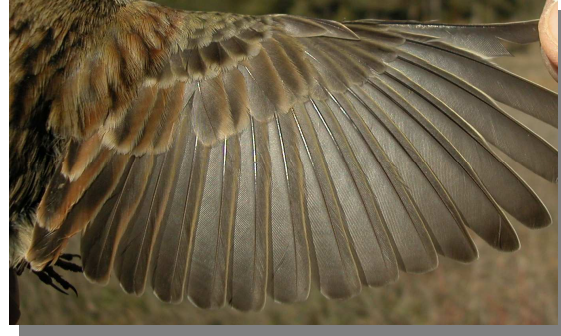


Cirl Bunting. Autumn. 1st year. Breast pattern: left male (25-IX); right female (27-XI).

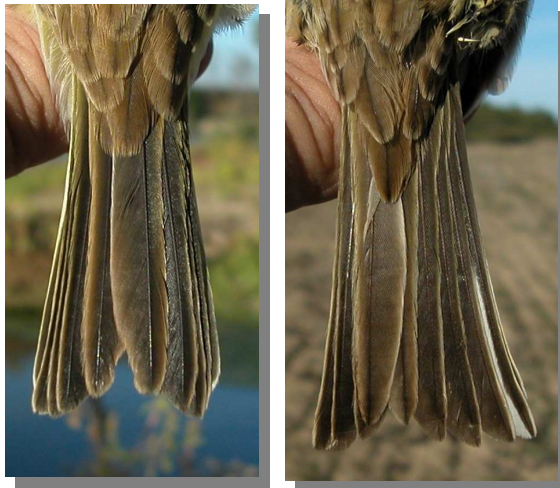
445 Cirl Bunting



Cirl Bunting. Autumn. Adult. Tail pattern: left male (10-X); right female (26-XII).



Cirl Bunting. Autumn. Adult. Female: pattern of wing (26-XII).



Cirl Bunting. Autumn. 1st year. Tail pattern: left male (25-IX); right female (27-XI).



Cirl Bunting. Autumn. 1st year. Male: pattern of wing (25-IX).



Cirl Bunting. Autumn. 1st year. Female: pattern of wing (27-XI).

Cirl Bunting. Autumn. Adult. Male: pattern of wing (10-XI).