

# 451 Reed Bunting



Reed Bunting. Late winter. Male (12-II).

**REED BUNTING** (*Emberiza schoeniclus*)

### IDENTIFICATION

13-16 cm. Late **winter**, **male** with head and throat black and wide white band around neck. **Male** in **autumn/early winter** and **female** with head chestnut-reddish, supercilium and moutache buff; throat whitish. Bill grey and outer tail feathers white.

### SIMILAR SPECIES

**Male** in **breeding** plumage unmistakable. **Male** in **winter** and **female** recall that of a **female House Sparrow** which lacks white on tail.



House Sparrow. Female.

### SEXING

**Male** in **breeding** plumage with black head and throat. After **postbreeding/postjuvenile** moults **male** with similar plumage pattern than **female**, but with white band on nape; grey rump; black on base of neck feathers; black on base of crown feathers with rounded pattern. **Female** without (or quite hidden) white band on nape; brownish rump; lack black on base of neck feathers; black-grey on base of crown feathers with pointed pattern. **CAUTION:** some **females** have much white on neck and have greyish rump.

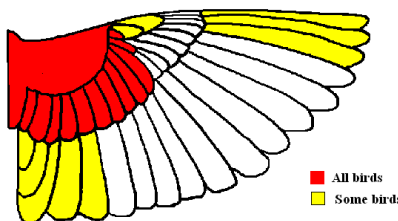
### AGEING

This species doesn't breed in Aragon, so only 2 types of age can be recognized:

**1st year autumn/2nd year winter** with moult limits on wing between tertials or between tertials and secondaries; tail feathers with pointed tips due to wear; tip of 8th and 9th primaries pointed; usually pale flight feathers.

**Adult** without moult limits on wing; tail feathers fresh and with rounded tips; tip of 8th and 9th primaries rounded; usually dark flight feathers.

**CAUTION:** some birds moult all tail feathers in their **postjuvenile** moult, so fresh and rounded feathers no necessary suggest an **adult** bird.



Reed Bunting. Extent of post-juvenile moult.

### PHENOLOGY

I	II	III	IV	V	VI	VII	VIII	IX	X	XI	XII

### STATUS IN ARAGON

Winter visitor. Widely distributed throughout marshlands and riversides from the Region,

### MOULT

Complete **postbreeding** moult; usually finished in October. Partial **postjuvenile** moult including body feathers, lesser, median and all greater coverts; some birds moult tertials, all tail feathers and some flight feathers; usually finished in October.

# 451 Reed Bunting



## ESTATUS EN ARAGÓN

En Aragón sólo se ha constatado su presencia con nidificante ocasional en la Laguna de Sariñena. En invierno es un ave común en las zonas de regadíos y sotos de toda la comunidad.



Reed Bunting. Outumn. Male poorly weared (21-X).



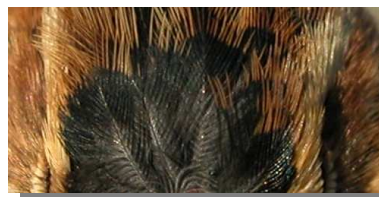
Reed Bunting. Autumn. Weared male (19-X).



Reed Bunting. Female (19-X).



Reed Bunting. Head pattern. From top to bottom: male in late winter (12-II); male poorly weared in autumn (21-X); male weared in autumn (19-X); female (19-X).



Reed Bunting. Pattern of base of crown feathers: top male (20-X); bottom female (20-X).

# 451 Reed Bunting



Reed Bunting. Pattern of base of neck feathers: left male (20-X); right female (20-X).



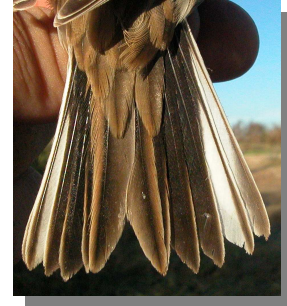
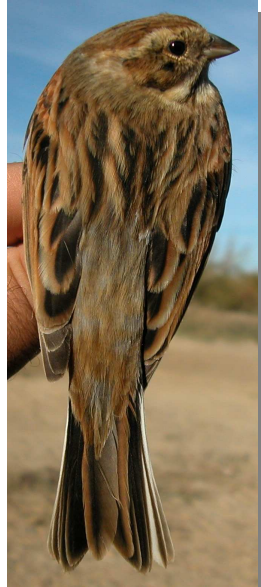
Reed Bunting. Nape pattern. From top to bottom: male in late winter (12-II); male poorly weared in autumn (21-X); male weared in autumn (19-X); female (19-X).



Reed Bunting. Breast pattern. From top to bottom: male in late winter (12-II); male poorly weared in autumn (21-X); male weared in autumn (19-X); female (19-X).



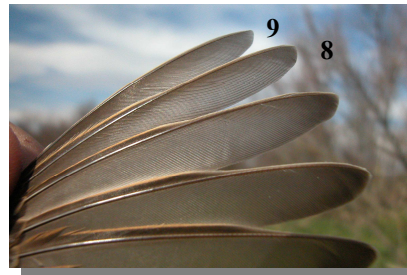
# 451 Reed Bunting



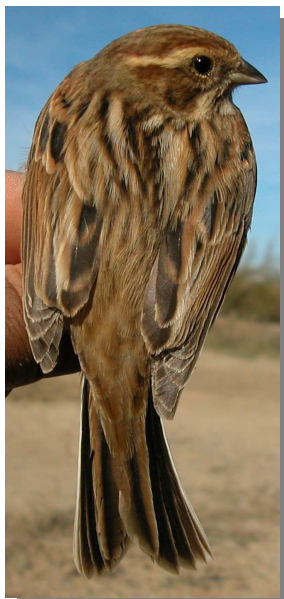
Reed Bunting. Tail wear: left adult (20-X); right 1st year (20-X).



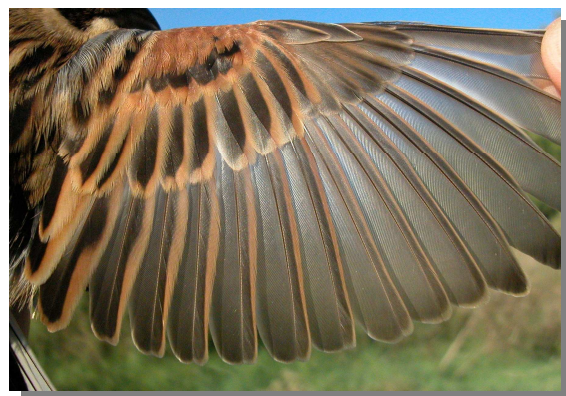
Reed Bunting. Male. Pattern of rump and upperpart: top left late winter (12-II); top right poorly worn in autumn (21-X); left worn in autumn (19-X).



Reed Bunting. Tip pattern of 8th and 9th primaries: top adult (12-II); bottom 1st year (20-X).



Reed Bunting. Female. Pattern of rump and upperpart (19-X).



Reed Bunting. Adult. Male: pattern of wing (21-X).

# 451 Reed Bunting



Reed Bunting. Adult. Female: pattern of wing (21-X).



Reed Bunting. 1st year. Male: pattern of wing (29-X).



Reed Bunting. 1st year. Female: pattern of wing (19-X).