

210-211-535 Nukunuku Rover Snood

© Pierrot Yarns (Gosyo Co., Ltd.). Translation by Linda Lanz.



Materials

- Pierrot Yarns Nukunuku Rover [60% acrylic, 40% wool; 47 yds/43m per 1.41 oz./40g skein]; color #5 dark moss green; 5 skeins [190g]
- 5.7mm (approx US 9) knitting needles or size necessary to achieve gauge
- darning needle

Gauge

- seed stitch: 12 sts and 21 rows = 10cm/4" square
- pattern stitch: 16 sts = 8cm/3.15" and 21 rows = 10cm/4"

Finished measurements

- width 22cm/8.66"
- length 130cm/51.18"

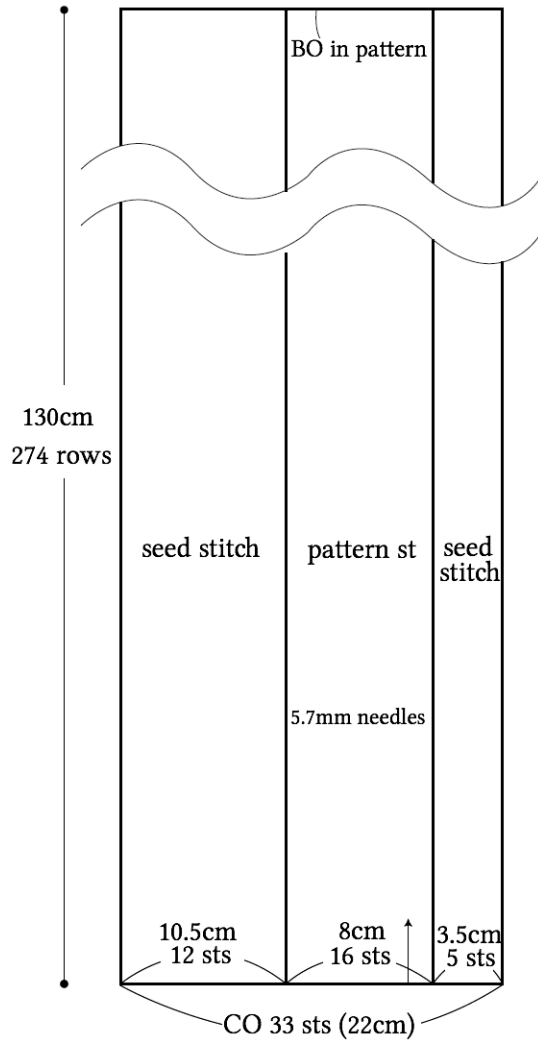
Knitting Tips

Cast on with long-tail cast-on and knit in seed stitch, pattern stitch, and seed stitch according to schematics. When finished, bind off in pattern. Seam cast-on row to bind-off row using woven seam.

Abbreviations: BO = bind off; CO = cast on

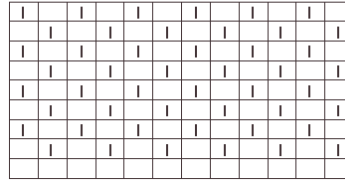


●snood



●seed stitch

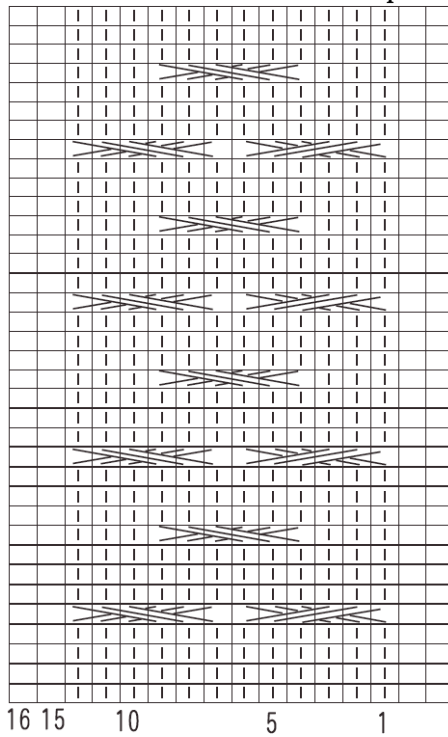
□ = □ purl stitch



→ 2
← 1 (CO row)

●pattern stitch

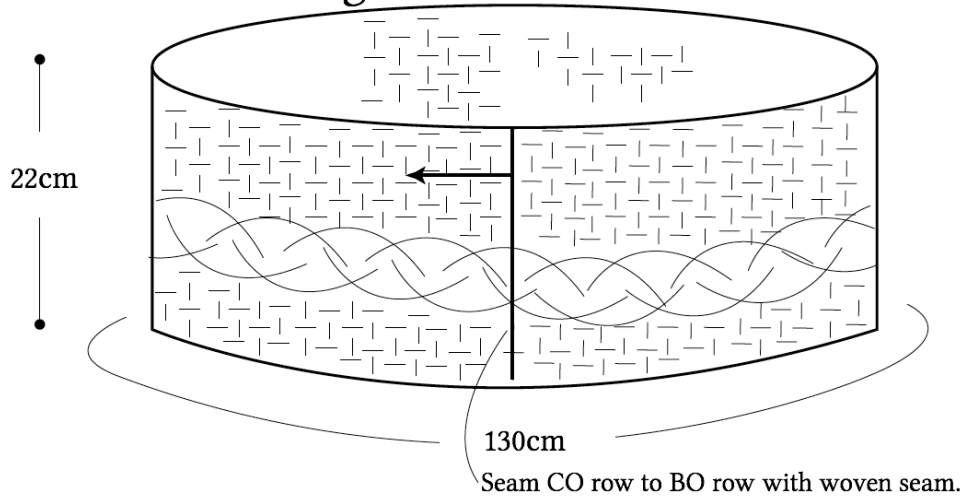
□ = □ purl stitch



□ = C6B

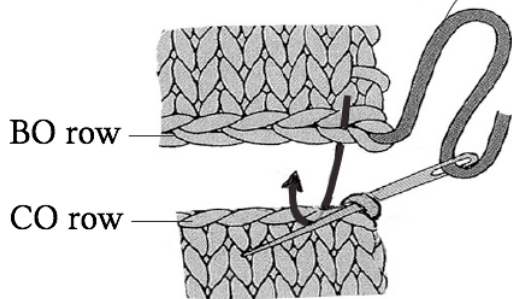
□ = C6F

● finishing

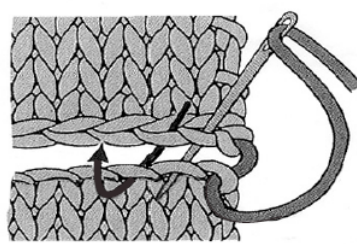


● woven seam

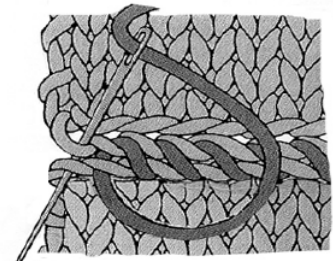
after binding off, leave yarn tail approx. 1.5 times the width of the snood



- ① Insert needle into first stitch of CO row (i.e., the side with no yarn tail). Insert needle into stitch of BO row, then into next stitch of CO row as indicated.



- ② Insert needle through one loop of stitch on BO row, then into stitch on CO row.



- ③ After inserting needle into two last stitches, woven seam is complete.