



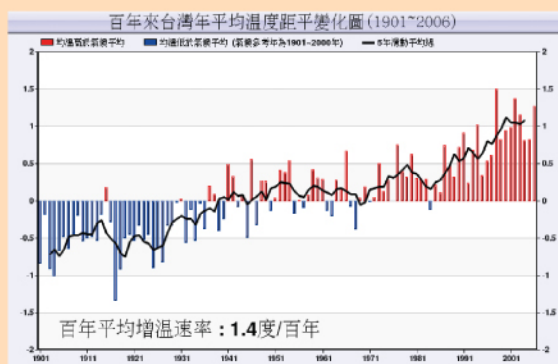
Central Weather Bureau
中央氣象局氣象預報中心

Weather Forecast Center

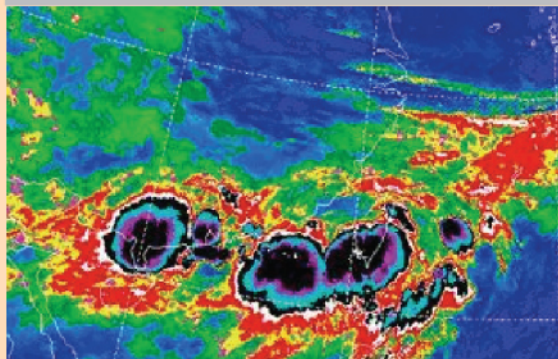


台灣的天氣預報業務發展甚早，可遠溯自民國前15年日治時期官署之開辦，而民國38年之後，因隨著機關的多次改制，負責天氣預報單位的名稱由預報組、氣象預報測站改為今日的氣象預報中心。業務職掌包含：定時發布短、中、長期天氣預報，適時發布災害性天氣特報、颱風警報，從事天氣守視及氣候監測，建立發布管道及提供便捷之預報資訊服務等。

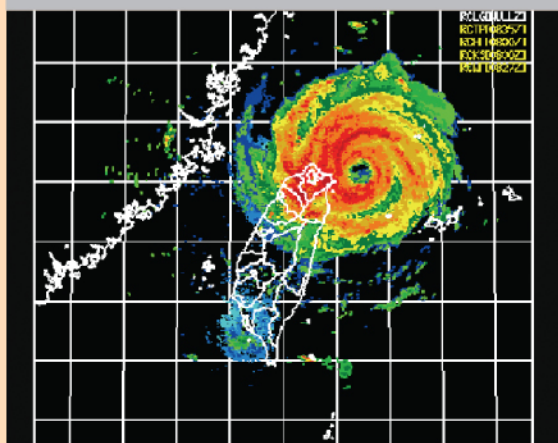
Weather forecast services in Taiwan can be traced back to the early time of the Japanese occupation in the year of 1896. When the Central Government moved to Taiwan in 1949, the name of the forecast unit was changed from the Forecast Division, Forecast Station, to the Weather Forecast Center (WFC). It falls under the jurisdiction of the Central Weather Bureau (CWB). The main duties are: short-range to long-range weather forecasts, appropriately released severe weather advisories and typhoon warnings, weather watch and climate monitoring, and products issuance and services.



▲ 台灣氣候監測 Taiwan climate monitoring



▲ 衛星觀測資料 Satellite observations



▲ 雷達觀測資料 Radar observations

氣象監測

Weather / Climate Monitoring

1 氣候監測

Climate Monitoring

監測台灣及全球主要城市的氣候概況以及海洋和大氣環流場的演變狀態。

Data collection and analysis of climate variation over Taiwan area and major cities around the world. Also, monitoring of general atmospheric circulation and ocean condition.

2 天氣守視

Weather Watch

採24小時全天候作業，即時監測各種天氣現象，包含寒流、梅雨、颱風及中小尺度對流系統之變化。

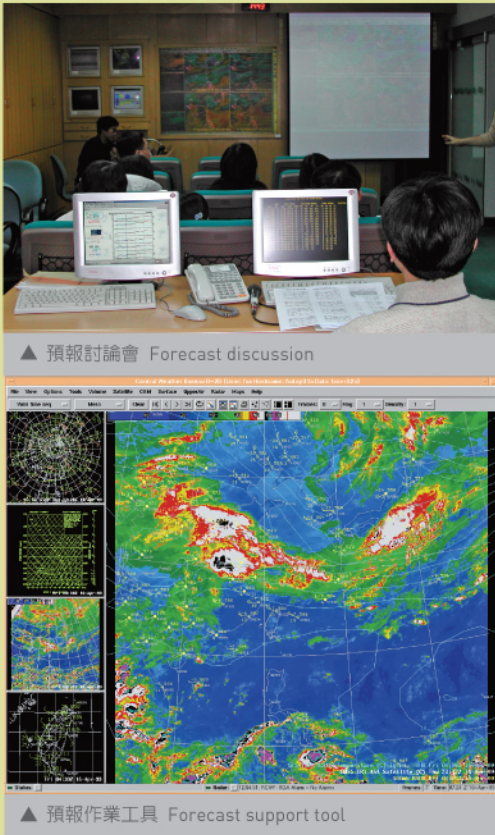
24 hours a day, real-time monitoring of all kinds of weather phenomena which may affect Taiwan area, including cold surge, Mei-Yu front, typhoon, and meso- to small-scale convective systems.

氣象預報

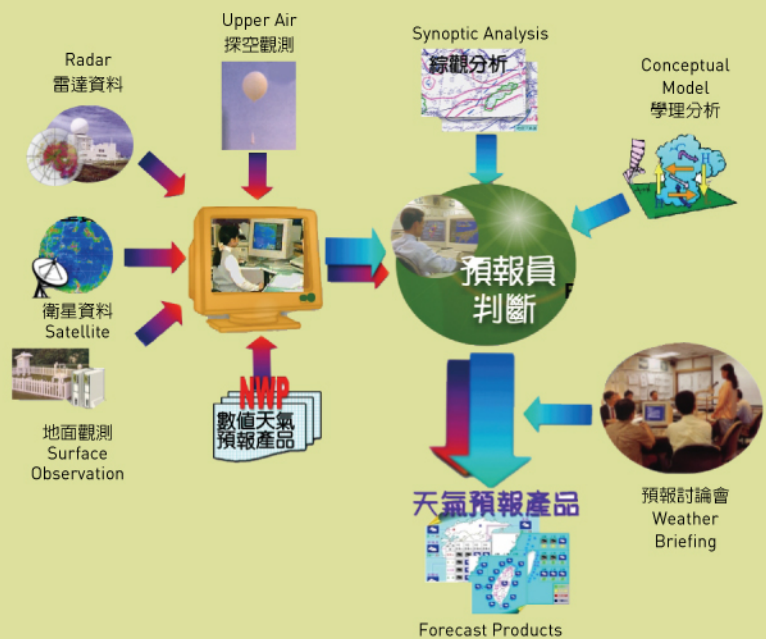
Weather Forecast

預報作業流程包括蒐集各種氣象觀測資料，經過處理、分析與電腦運算之結果，供預報人員進行分析與研判，並透過詳細討論過程，獲得預報結論，據以發布各類預報產品。

The process of preparing weather forecasts includes data collection, data analysis, numerical model prediction, forecast discussion, and forecast issuance.



預報作業流程圖 Weather Forecast Process



1 短中期天氣預報

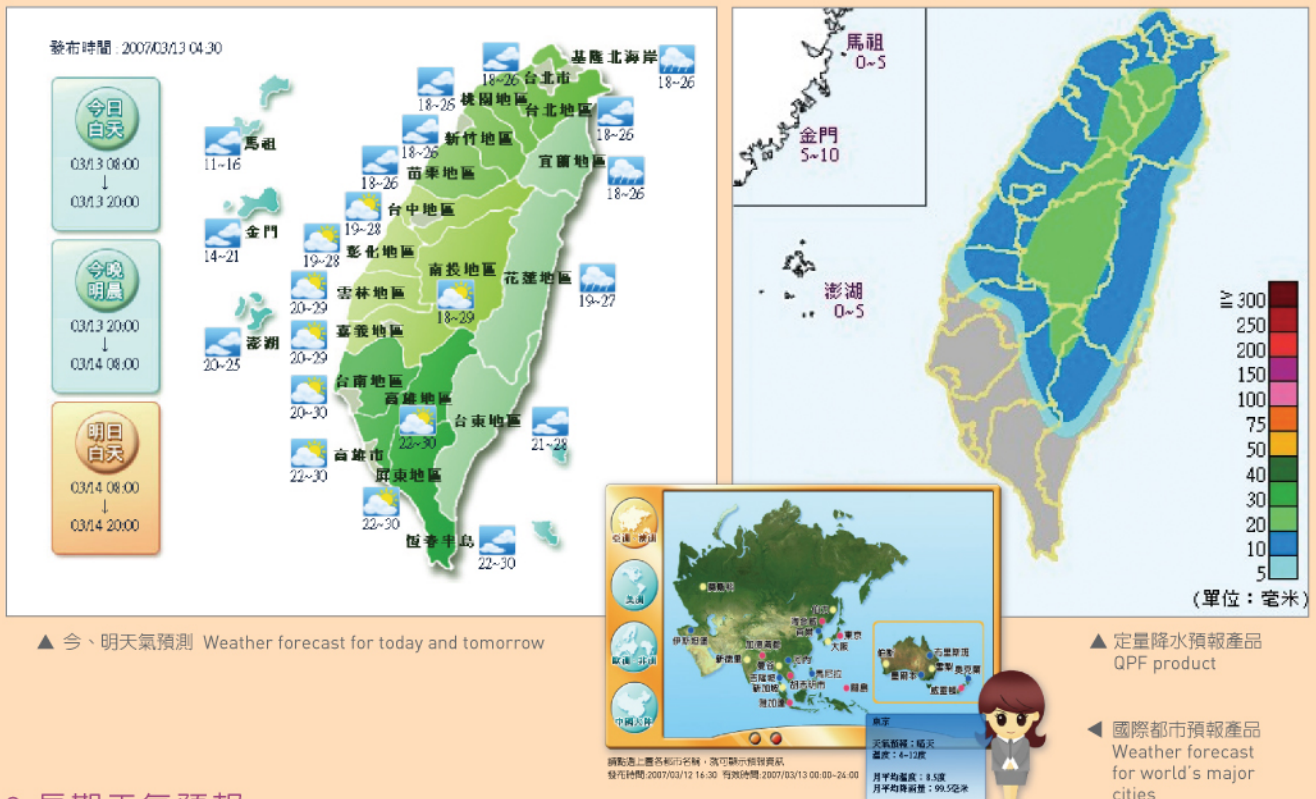
Short-Range and Medium-Range Weather Forecasts

每天定時發布台灣各地各種短期(12至36小時)及中期(3-7天)天氣預報。預報產品包括今日、今夜、明日、明夜、一週、一週旅遊、大陸主要城市、國際都市、近海漁業、三天漁業、降雨機率、舒適度指數及定量降水預報等。

The WFC issues various short-range and medium-range weather forecasts which include: weather outlook, today's and tomorrow's weather forecast, 7-day weather forecast, weather forecast for major cities around the world and mainland China, fishery weather forecast, Probability of Precipitation forecast, comfort index forecast, and Quantitative Precipitation Forecast.



▲ 地面天氣分析及預測圖 Surface weather analysis and forecast charts



2 長期天氣預報

Long-Range Weather Forecasts

預報某一較長時段內的天氣變化趨勢，如氣溫的偏暖或偏冷、雨量的偏多或偏少等，可供農工商各業、公、民營事業與政府相關部門作為營運規劃參考。預報產品包括月長期天氣展望、季長期天氣展望及氣候監測報告。

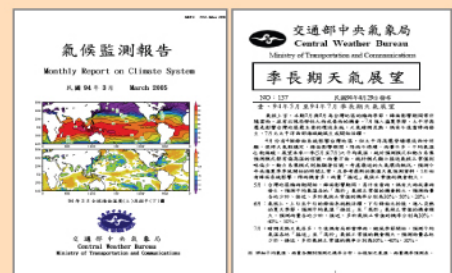
Long-range weather forecasts provide trend information for weather over a longer period of time. For example, the average temperature of a certain month tends to be higher or lower than in historical records. These data provide government and private organizations a reference in planning agricultural, industrial, or business activities.

3 災害性天氣特報

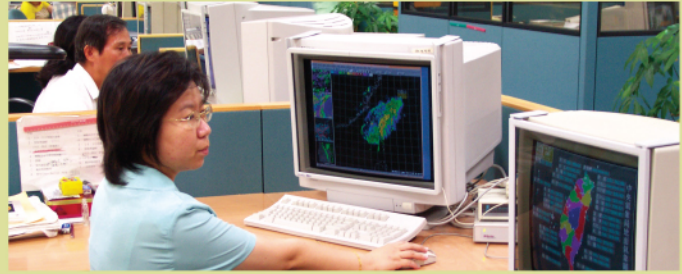
Severe Weather Advisories

預報人員隨時守視天氣並適時發布各種災害性天氣特報，通報有關機關及傳播媒體轉知民眾即時採取防範措施，以減少氣象災害。主要項目包括大雨、豪雨、低溫、濃霧及強風等。

Forecasters keep close watch on and issue timely advisories for severe weather to related agencies and the media in order to alert the general public to take precautionary measures. The forecast products include: heavy rain, extremely heavy rain, cold surge, strong wind / gale / storm, and dense fog advisories.



▲ 災害圖片 Severe weather hazards



▲ 天氣監測 Severe weather monitoring

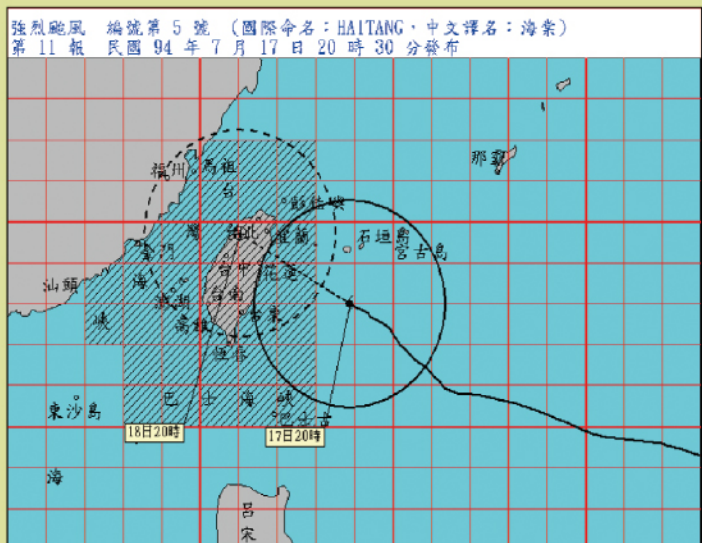
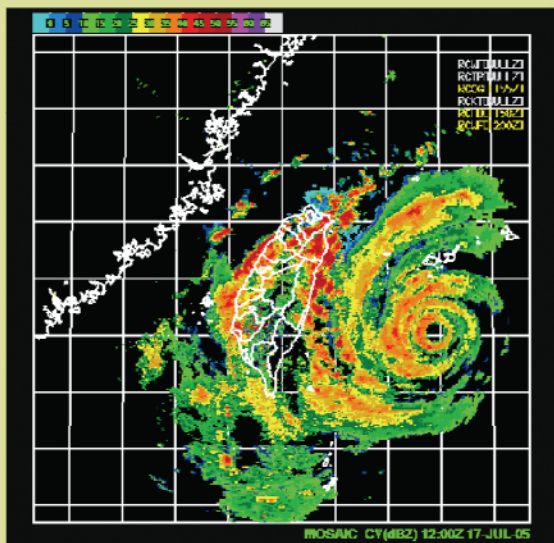
4 颱風預報及警報 Typhoon Warnings



▲ 颱風預報產品及警報發布 Typhoon track prediction and dissemination

嚴密守視颱風動態，積極建立颱風作業系統，並適時發布颱風警報，提供相關單位及民衆防颱參考。項目包括海上颱風警報、海上陸上颱風警報及解除颱風警報。

The WFC intensively monitors the movement of a typhoon when it is expected to affect Taiwan area and issues timely warnings to agencies involved and to the general public so that they may take precautionary measures.



海棠颱風警報圖及雷達回波 Typhoon warning for Haitang (right) and its radar reflectivity (left)



▲ 多種不同氣象服務管道 Diversified weather services

氣象服務

Meteorological Service

為提供各界便捷之氣象預報資訊服務，及因應政府防救災作業需求，建置多重服務管道，包括氣象諮詢及媒體連線服務、166、167氣象資訊電話語音查詢系統、氣象資訊語音傳真回覆系統、傳真服務系統、點對點防災服務系統、國際無線電廣播、SSB氣象廣播、氣象影音視訊服務、簡訊及E-mail 服務、網際網路及專業氣象服務。

To meet various demands from the government, private firms, and the general public, the WFC has established multi-channels for users to access the information. Currently weather forecasts are available through the weather consulting hot line, media interview service, "166/167" weather forecast phonetic inquiry system, Fax-On-Demand system, Hi-Fax service, point-to-point disaster prevention weather service system, international radio broadcasting, SSB meteorological broadcasting, internet audiovisual service, SMS and email service, World Wide Web, and specialized weather forecast services.



Weather Forecast Center
Central Weather Bureau

中央氣象局氣象預報中心

10048 臺北市公園路 64 號

64, Gongyuan Road

Taipei 10048, Taiwan (R. O. C.)

Tel : +886 2 23491000

<http://www.cwb.gov.tw>