



FIRST CAPITOL AUCTION INC.

Northern California's Leading Auction Company

NO MINIMUM ★ NO RESERVE ★ GOVERNMENT ENDORSED

PUBLIC AUCTION

PACIFIC GAS & ELECTRIC



United Rentals



35 San Francisco Bay Area Government Agencies

3 AUCTION RINGS ★ ALL SELLING ONE DAY

RING 1: Construction & Utility Equipment, Large Trucks & Trailers ★ **RING 2:** Over 250 Government Fleet Vehicles, Asset Seizures, & Real Estate ★ **RING 3:** Jewelry & Recovered Property



BID ONSITE OR ONLINE!

FREIGHTLINER FL60 SERVICE TRUCK

SKYTRAK 10042 TELESCOPIC FORKLIFT



DYNAPAC CA150PD PADFOOT COMPACTOR

FORD LOUISVILLE SEWER VAC RODDER TRUCK (ONLY 27,300 MILES)

SATURDAY, DECEMBER 17, 2011 AT 9:00 A.M. SHARP!

San Francisco Bay Area • 50 Solano Avenue, Vallejo, California 94590

INSPECTION: Friday, December 16, 2011, 9:00 A.M.–4:30 P.M.



FIRST CAPITOL AUCTION INC.

COMMERCIAL LIQUIDATORS & APPRAISERS

LIVE INTERNET BIDDING
Available Through **proxibid™**

Phone (707) 552-0739
Fax (707) 552-8613

50 Solano Ave., Vallejo, CA 94590

Visit our Website at www.1stcapitolauction.com

e-mail: auctioncap@aol.com
BOND #14663700622 • CSL #A1621



RING 1: STARTS AT 9:00 A.M. SHARP

CONSTRUCTION & RENTAL EQUIP., POWER & UTILITY EQUIP. & LARGE TRUCKS



1997

PETERBILT 385 TRUCK TRACTOR WITH WILSON L 4870FT MUVALL TRAILER



2005

JOHN DEERE 317 SKID STEER LOADER



2005

FORD F650 BOBTAIL DUMP TRUCK



SULLAIR 375 CFM TOWABLE AIR COMPRESSOR



2000

FREIGHTLINER FL60 FLATBED WITH AUTO CRANE



MIDMARK 321 RIDE ON TRENCHER (ONLY 493 HOURS)



CEMENTECH BATCH PLANT

TRACK EQUIPMENT

CATERPILLAR D4-D Crawler Tractor, 4-way blade, rippers, OROPS, s/n 78A413.
ALLIS-CHALMERS HD11 Crawler Tractor, 4-way blade, OROPS, s/n 11-6471.
(2) CATERPILLAR D4 Crawler Tractors, aux. hyd., s/n 76585 and 7010653.

RUBBER TIRE, BACKHOE & SKIP LOADERS

FORD A66 RT Loader, GP bucket, enclosed cab, rippers, 6.6LT diesel eng., s/n 34110.
2005 JOHN DEERE 310G 4X4 Backhoe Loader, 4-in-1 bucket, extendahoe, 2,144 hours.
JOHN DEERE 302-A Skip Loader, GP bucket, scraper box, s/n 303860.

SKID STEER LOADERS & UTILITY TRACTORS

2005 JOHN DEERE 317 Skid Steer Loader, flotation tires, 4-in-1 bucket, aux. hyd., 2,039 hours.
2005 TAKEUCHI TL130 Track Skid Loader, rubber tracks, aux. hyd., 1,888 hours.
FORD 3500 Tractor, GP bucket, 3-pt. hitch, s/n C23877.
FORD 2000 Utility Tractor, 3-pt. hitch, roll bar, s/n 432424.
FORD 2910 LCG Utility Tractor, 3-pt. hitch, roll bar, s/n BC24307.
FORD 905 Auger Attachment.

COMPACTION EQUIPMENT & BATCH PLANT

2006 DYNAPAC CA150PD Pad Drum Roller, 66" pad drum, drum drive, backfill blade, 1,048 hours.
2006 WACKER RD11A Double Drum Roller, 36" drums, water system, 534 hours.
INGERSOLL-RAND DD22 Double Drum Roller, Duetz diesel eng., water system.

2003 WACKER RT56-SC Pad Trench Compactor, diesel eng., w/remote, 361 hours.
2007 BOMAG BPR45/55D Rev. Vib. Plate.
2006 WACKER BS 70-21 Rammer.
2006 BOMAG BR65/4 Rammer.
CRAFCO Super Shot 125 Towable Crack Sealer.
1999 MARATHON RamSet RJ 88-SC Trash Compactor, 43,100-lb. force rating, s/n 97314WB.
MC CAIN TRASH Compactor, s/n 36751.
CEMENTECH Mdl. SCD4.5-100 Batch Plant, s/n B4.5SCD306335EH.

FORKLIFTS & REACH EQUIPMENT

2004 SKYTRAK 10042 Telescopic Forklift, 10,000-lb. cap., Cummins diesel eng., 42' 3 stage mast, 1980 hours.
2004 SKYTRAK 6036 Telescopic Forklift, 6,000-lb. cap., Cummins diesel eng., 36' 3-stage mast, 1,729 hours.
2004 GENIE Z34/22IC Boom Lift, 40' 10" working height, 22'3" horizontal reach, 2VWD, 1,420 hours.
2001 JLG E400AN Boom Lift, 40' boom, narrow, non marking tires, electric, 1,671 hours.
2005 GENIE GS-2032 Scissor Lift, 20' platform height, non marking tires, 198 hours.
2001 GENIE GR-12 Personnel Lift, 12' platform height, electric, 309 hours.
2004 KOMATSU FG25T-14 Industrial Forklift, 5,000-lb. cap., 188" 3-stage mast, 1495 hours.
CLARK C500Y50 Cap Forklift, 3500-lb., 15' 3-stage mast, gas eng.

GENERATOR SETS, AIR COMPRESSORS & WELDERS

2005 MULTIQUIP DCA255S1U2C Generator, 19-29 kva, 8,577 hours.
DAYTON 2500 Watt Generator.
HOMELITE 2500 Watt Generator.
SULLAIR 375H Towable Air Compressor, John Deere diesel eng., 375 cfm, 150 psig, 4053 hours.



2004 SKYTRAK 6036 TELESCOPIC FORKLIFT



JLG E400AN BOOM LIFT



GENIE Z34-22IC BOOM LIFT

INSPECTION: Friday, December 16, 2011
9:00 A.M.-4:30 P.M.
No Children or Pets Please!

From the Staff at First Capitol Auction

RING 2 STARTS IMMEDIATELY AFTER RING 1 APPROXIMATELY 11:00 A.M.

- ★ SPECIAL INTEREST, ASSET SEIZURES ★
- ★ FOLLOWED BY REAL ESTATE ★
- ★ OVER 250 GOVERNMENT FLEET VEHICLES,
LIGHT TRUCKS & BUSES ★

NEW & UNUSED EQUIPMENT

New & Unused: (2) MUSTANG 6500DP Silent Diesel Generators; (3) MUSTANG CV 3500 Concrete Vibrators; (2) MUSTANG MP 4800 2" Submersible Pumps; WP30 3" Water Pump; MUSTANG RC20 3/4" Rebar Cutter; (6) New 3-Pc. 14" Premium Diamond Blades; (3) 6-Pack 14" Abrasive Blades; (2) 3/4" X 50 Ft. Jack Hammer Air Hoses; (3) Stiff Neck Pintle Hitches; 1" Drive Air Impact Wrench; 1/2" Drive Air Impact Wrench Kit; 3-Pc. Air Spray Gun Kit; (2) 4-Pack 10,000-Lb. Ratchet Cargo Straps; HUSKIE 11218 SDS Hammer Drill; (2) GEOTOP GL-5 Self Leveling Laser Level; GEOTOP 32X Long Range Automatic Level; Geotop 20X Builders Transit Level.

TRENCHER, LANDSCAPING & MISCELLANEOUS EQUIPMENT

MIDMARK 321 4X4 Ride On Trencher, 6' digging depth, backfill blade, only 493 hours, s/n 3213701.

JOHN DEERE 6400 Mower, John Deere diesel eng., 11' mower.

JOHN DEERE F930 Rotary Mower, John Deere diesel eng., 11' mower.

JOHN DEERE 1600 Turbo 4X4 Ride On Mower, John Deere 4-cyl. turbo diesel eng., only 2,233 hours.

FMC Pesticide Sprayer.

54" TORO Walk Behind Mower.

(2) HR-15 72" Multideck Mowers.

BACPAC Blowers; Line Trimmers; Safety Helmets; SHOP VACS; GEARMORE Pendulum Fertilizer Spreader; LAND PRIDE 15-72 Commercial Slit Seeder; MCLANE Reel Walk Behind Mowers; Pressure Washers; 200-Gallon Diesel Fuel Tank; SPARTAN & ELECTRIC EEL Sewer Snakes; VAPOR-ROOTER Mini Foamer; (2) 150 Hp. Electric Eng.; MIKASA & WACKER Tampers; Piranha Trimmers; RST 1400 Pipe Inspection System; Roto Tillers; Log Splitters; WONDER Cement Mixers; ESSICK Cement Mixers; ALCOTA 2122 Steam Cleaners.

MOTORCYCLES, UTILITY CARTS & TRAILERS

2001 KAWASAKI KL650 Dual Sport Motorcycle, 14,804 miles.

2003 KAWASAKI KLX400SR Dual Sport Motorcycle, 8,319 miles.

2007 CLUB CAR DSV8V1Q Utility Electric Cart.

(2) TAYLOR DUNN 3000 Electric Cart.

(2) GO-4 BT57 3-Wheel Scooters.

Trailers & Bison Handlers

DISPLAY SOLUTIONS Towable Arrow Board, s/n 5010329.

Standard HRD88 4-Reel Cable Trailer, 1S9RF62DOK1078226.

1997 WILSON 4870 FT. Muvall Equipment Trailer, 10' upper 40' lower, hyd. tail, Braden winch, 86000-lb. GVW.

2005 ZIEMAN 2327-D Equipment Trailer, 30'9" length, 27,570 GVW, w/hyd. pump.

2007 BERLINIC Towable Bison Handling Facility, portable squeeze chute, crowd alley, w/Subaru EH72 aux. pump, only 7 hours.

ASSET SEIZURE & FLEET VEHICLES, PICKUP TRUCKS, VANS & SUV'S

Government Fleet Vehicles Partial Listing Including: (25-30) 2008-2000 FORD Crown Victorias; 2006 FORD Taurus SE; (8) 2001-1998 HONDA Civics; 2001 HONDA Accord LX; (3) 2000-1997 TOYOTA Camrys; 1999 TOYOTA Avalon XLS; (12) 2003-1998 CHEVROLET Cavaliers; CHEVROLET Malibus; 2005 PONTIAC Grand AM; 1998 PONTIAC Grand Prix; 1997 NISSAN Maxima; BUICK Centuries.

Pickups: 2005-1999 FORD F-150s, F-250s, F-350s; (5) 2003-2000 Rangers; (4) 2002-2000 DODGE Dakotas; (5) 2003-2002 CHEVROLET 1500s; 1999 Sierra 1500 Pickup, 9378.

Vans: (6) 2006 CHEVROLET Amerivans, V8 gas eng., auto. trans.; (10-15) 2003-1998 GMC Safari Vans; 2000 GMC AWD Safari Van; (5) 2001 CHEVROLET Cargo Vans; (10) 1999-1998 CHEVROLET Astro Cargo Vans; (5) 1999 GMC Savana Vans; (3) DODGE Ram 2500 Vans.



GOVERNMENT FLEET VEHICLES



(12) GILLIG PHANTOM TRANSIT BUSES



ASSORTED GO-4 SCOOTERS & MOTORCYCLES



(1 OF 6) FIRE ENGINES



BMW MOTORCYCLE

SUVs: 1998 FORD Explorer XLT; Ford Expeditions; 1999 GMC 1500 Suburban; DODGE Durangos; JEEP Cherokees; 2003 CHEVROLET Trail Blazers; 1998 SUZUKI Sidekick.

CNG VEHICLES

2002 FORD F-150 CNG.
2001 HONDA Civic CNG.
2000 TOYOTA Camry CNG.
(2) 1998 HONDA Civic CNG.

More Vehicles Arriving After Publishing Deadline Check Our Website For Additions!

BUSES & PARATRANSIT VANS

(14) GILLIG Phantom M11-T-40-102 43-Passenger Transit Buses, some w/wheelchair lifts.

(6) 1995 GILLIG 40-Passenger Transit Buses.

(4) 1983 GMC RTS 40-Passenger Transit Buses.

JEWELRY, BICYCLES, & RECOVERED PROPERTY

Over (200) Lots of Assorted Miscellaneous Jewelry.

(15-20) Assorted Bicycles.

Can't be there? Visit Our Website & Click on the proxibid™ Link, or Leave an Absentee Bid.



**FIRST CAPITOL
AUCTION INC.**
COMMERCIAL LIQUIDATORS & APPRAISERS

**SELLING EQUIPMENT—
CALL US TODAY! (707) 552-0739**



RING 3

**STARTS AT 11:00 A.M.
JEWELRY, & SURPLUS PROPERTY**

**HELP FIRST CAPITOL
AUCTION GO GREEN!**

*Leave us your email address and
help your environment.*

Printed on Recycled Paper with Soy Based Inks

AUCTION CALENDAR

FIRST CAPITOL THE AUCTION COMPANY
— A California Joint Venture Company —



SOUTHERN CALIFORNIA LOCATION
PHONE (951) 657-5300
FAX (951) 657-5244
4461 WADE AVE., PERRIS, CA 92571
Website: www.theauctioncompany.net



**STATE OF CALIFORNIA
PLUS CONSTRUCTION EQUIPMENT FOR
SOUTHERN CALIFORNIA CONTRACTORS**

DATE: SATURDAY, FEBRUARY 11, 2012
DEADLINE FOR BROCHURE: JANUARY 28, 2012



**NORTHERN CALIFORNIA LOCATION
FIRST CAPITOL AUCTION INC.**
PHONE (707) 552-0739 • FAX (707) 552-8613
50 SOLANO AVE., VALLEJO, CA 94590
Website: www.1stcapitolauction.com

**CONSTRUCTION & RENTAL EQUIPMENT FROM
PACIFIC GAS & ELECTRIC, HERTZ, UNITED RENTALS
& GOVERNMENT FLEET & ASSET SEIZED VEHICLES**

DATE: SATURDAY, JANUARY 28, 2012
DEADLINE FOR BROCHURE: JANUARY 6, 2012

www.1stcapitolauction.com

TERMS & CONDITIONS

TERMS & CONDITIONS: Additional terms and conditions available day of sale, or visit www.1stcapitolauction.com.

LOCATION & DIRECTIONS:
50 Solano Avenue, Vallejo, CA. Interstate 80 to 780 West. Then to second light (Solano Avenue) and left to auction site on right side. Check our website www.1stcapitolauction.com for map.



DATES & SELLING TIMES:
DECEMBER 17 – 9:00 A.M.

RING 1 – 9:00 A.M. SHARP – Construction, Rental Equipment, & Large Trucks
RING 2 – IMMEDIATELY AFTER RING 1, APPROX. 11:00 A.M. –
Over (250) Government Fleet Vehicles, Buses, Asset Seizures & Real Estate
RING 3 – 11:00 A.M. SHARP – Jewelry, & Recovered Property

INSPECTION: Friday, December 16, 9:00 A.M. to 4:30 P.M., before or after equipment auction. No inspection during auction.

REGISTRATION: You must register in order to bid. A valid driver's license is required for registration. If you are registering as a dealer you will need a copy of your Dealer's License and Seller's Permit. Your bidder number is a contractual document and you are responsible for anything sold to that number. Guard it carefully. No one under the age of 21 years old is allowed on any piece of equipment. **NO CHILDREN OR PETS.**

INSPECTION & DISCLAIMERS: Principals, auctioneers, and advertising counsel will not be held responsible for advertising inaccuracies and discrepancies. It is the responsibility of the buyer to make their own determination as to the accuracy of the item's descriptions, **relative to age, condition, make, model, mileage, and serial number.** All items are sold on an "as is, where is" basis without any warranty, expressed or implied. Buyer agrees that they understand all of the verbal and written terms of the auction and agrees to abide by all of them.

PAYMENT & BUYER'S PREMIUM: All payments must be made by cash, certified funds (cashier's check or money order), wire transfers, or a company check with a bank letter of guarantee to First Capitol Auction, Inc. Twenty-five percent (25%) deposit required day of sale and balance due the following Monday. We DO NOT accept credit cards or personal checks. If the buyer neglects to leave a 25% deposit and the property is not paid in full by the close of business on Monday, First Capitol Auction, Inc. reserves the right to rescind the sale of any and all items bid upon by the purchaser. A **12.5% buyer's premium** is assessed to all items located in the warehouse, all items located along the fence line "F" and all items marked with a "P." **ALL SALES ARE FINAL, NO REFUNDS, OR ADJUSTMENTS.**

PURCHASE OF VEHICLES: First Capitol Auction, Inc. is a California licensed automobile dealer and guarantees legal title. Any vehicle that does not pass smog or California safety requirements cannot be auctioned to the public and can be sold only to licensed auto dealers or dismantlers. All vehicles purchased will be registered with DMV in the name of the person registered to the bidder number. No exceptions... No changes.

FEES:

1. A \$55.00 processing fee will be added to the sale of any items involving titles, registration, any DMV documentation or processing.
2. A \$58.25 fee for smog inspection and certificate will be assessed on all vehicles that require smog certification.
3. Applicable sales tax on all items including vehicles will be collected.
4. On titled vehicles, First Capitol Auction, Inc. will collect all appropriate DMV fees and register the vehicle for you. It is possible that the DMV fees due are more or less than is estimated on the contract. Any additional fees due to DMV will be the buyer's responsibility.

REMOVAL: No purchases may be removed until 2:00 P.M. All property must be removed no later than 5:00 P.M. Wednesday. **It is the sole responsibility of the buyer to assume all liability for the safe removal, cost of removal and security of items purchased once the award of bid is made.** No exceptions. Purchases must be removed from the premises in the time allocated as announced and/or posted by the auctioneers. First Capitol Auction Inc. reserves the right to charge the purchaser for the costs of storage and/or disposal beyond the removal period. **Items not picked up in the time allocated will be considered abandoned. Storage fees in the amount of \$50.00/day per item will be charged for any items left in our yard three (3) business days after the removal deadline.**

SELLING SURPLUS EQUIPMENT: We conduct large construction equipment/vehicle auctions on behalf of municipalities, contractors, lending institutions and rental yards. Please call and talk with any member of our professional staff if you have equipment you would like to sell. Call (707) 552-0739.

CALL FOR ADDITIONS OR DELETIONS.

ATTENTION OUT OF STATE BUYERS: We will be selling non-compliant government diesel vehicles and equipment legal everywhere but California. Do not miss this opportunity!

DIESEL VEHICLES & EQUIPMENT: Diesel vehicles (over 14,400 GVW) or off-road diesel vehicles when operated in California may be subject to the State of California Air Resource Board (CARB) in-use off-road diesel vehicle regulation and may not be operated or registered in the State of California without being retrofitted. It is the buyer's sole responsibility to determine if diesel engines or equipment with diesel engines can be permitted or registered in the State of California. All non-compliant Pacific Gas & Electric vehicles and equipment will be sold to registered out-of-state buyers only! For more information contact the State of California Air Resource Board (CARB). www.arb.ca.gov, or call (800) 242-4450. Those vehicles that do pass smog and California safety requirements will be sold to the public and will be subject to all vehicle processing fees.

NO MINIMUM ★ GOVERNMENT ENDORSED PUBLIC AUCTION

GOV'T FLEET VEHICLES FROM OVER 35 SAN FRANCISCO BAY AREA CITIES, COUNTIES & MUNICIPALITIES



2006

WACKER RD11A
DOUBLE-DRUM ROLLER



(2) CATERPILLAR D4
CRAWLER TRACTORS



2005

JOHN DEERE 310G 4X4 BACKHOE LOADER



(1 OF 5) JOHN DEERE RIDE ON MOWERS

3 WAYS TO BUY AT A FIRST CAPITOL AUCTION
★ Live Onsite ★ Absentee Bid
★ Live on the Internet @ www.proxibid.com



ALLIS-CHALMERS HD11
CRAWLER TRACTOR

SAYLOR-BEALL Shop Compressor.
KELLOGS American Shop Compressor.
LINCOLN SP-150 Arc Welder.

BUCKET & CRANE TRUCKS

(4) 2007-2001 FORD F-550 XL Bucket Trucks, International 6.0LT. Power Stroke diesel eng., auto. trans., w/Telex Telelect Hi-Ranger TL38P boom, from 89,362 miles.

(3) 2003-2001 FORD F-550 XL Super Duty Bucket Trucks, International Power Stroke diesel eng., auto. trans., w/Altec AT37G boom, 100,925, 100,947 and 122,155 miles.

1995 GMC 3500 HD CK Bucket Truck, gas eng., 5-speed trans., w/Versalift P3100N 31' boom.

2001 FORD F-550 Crane Truck, V8 diesel eng., auto. trans., w/Liftmoore 2550 crane, aux. hyd.

TRUCK TRACTORS & MECHANICS TRUCKS

1997 PETERBILT 385 3-Axle Truck Tractor, Cat C10 6-cyl. turbo diesel eng., Eaton 10-speed trans., Protech Headache Rack, wet kit, air ride suspension.

2004 FREIGHTLINER Business Class M2 Utility/Service Truck, Mercedes Benz 6-cyl. turbo diesel eng., Allison auto. trans., w/Miller Big Blue 402D welder/generator, 4,473 hours and 6006H auto. crane, 58,324 miles.

2000 FREIGHTLINER FL60 Utility Crane Truck, Cummins 5.9LT turbo diesel eng., Allison auto. trans., w/Warn 10,000-lb. front winch, 6006H auto. crane, aux. hyd., 50,300 miles.

2000 CHEVROLET 2500 Utility Truck, V8 gas eng., auto. trans., utility body.

1999 DODGE BR2500 Utility Truck, V8 gas eng., auto. trans., utility body.

DUMP & WATER TRUCKS

2005 FORD F-650 5 Yard Dump Truck, Cummins diesel eng., 6-speed trans., 32,675 miles.

2001 DODGE BR2500 Dump Truck, Cummins diesel eng., 5-speed trans., w/flat bed dump.

1990 GMC Sierra 7000 Dump Truck, GM 8.2LT General Motors diesel eng., auto. trans., 35,388 miles.

(2) 1987 FORD F-800 Dump Trucks, Detroit 8.2LT diesel eng., Allison auto. trans., 40,495 miles.

1995 FORD NT800 5,000-Gallon Water Truck, diesel eng., 10-speed trans., self loading pump, front rear and side sprays.

SWEEPER, & SPECIAL USE TRUCKS

2000 GMC W5500 Sweeper Truck, Isuzu UHC diesel eng., auto. trans., Schwarze A4000 sweeper body, 19,922 miles.

1998 FORD Louisville Sewer Vac/Rodder Truck, Cummins 8.3LT diesel Allison auto. trans., Perkins diesel aux. eng., w/Vactor 2100 series body, 4,626 hours, 27,250 miles.

1990 FORD F-600 Patch Truck, Ford diesel eng., auto. trans.

INTERNATIONAL 4600 Patch Truck, International diesel eng., 10-speed trans.

1992 FORD F700 Box Van, Ford 636 L diesel eng., auto. trans., Daily body Mason RC 2B lift gate, 84,440 miles.

1984 FORD E350 4X4 Box Van, 7.5LT gas eng., auto. trans., w/Onan generator, only 12,950 miles.

FIRE TRUCKS

1996 CHEVROLET 3500 HD 4X4 Brush Fire Truck, 6.5LT Vortec gas eng., auto. trans., Harbor utility body, Briggs & Stratton HP100IFX 18 hp. pump, Hannay hose reel, Robwen foam system.

1993 MACK Water Tender, Mack diesel eng., Allison auto. trans., Eaton Fuller 9-speed trans., CAFF system, 3,000-gallon porta tank, ladder rack controls.

1977 FORD/PIERCE 50' Snorkel Truck, Caterpillar 3208 diesel eng., auto. trans., Telesquirt B5042 boom.

1987 FORD Howe Pumper Truck, Caterpillar 3208 diesel eng., Allison auto. trans., Chrysler 396 aux. eng., only 13,000 miles.

1989 FORD/BECK Pumper Truck, Caterpillar 3208 diesel eng., Allison auto. trans., Chrysler 396 aux. eng.

(2) 1983 FORD/BECK PUMPER TRUCKS, Caterpillar 3208 diesel eng., Allison auto. trans., Chrysler 396 aux. eng., (Non Runner).



2007

(1 OF 7) ASSORTED BUCKET TRUCKS



2007

BERLINIC TOWABLE BISON HANDLER



2005

MULTIQUIP DCA25SS TOWABLE
GENERATOR



2005

TAKEUCHI TL130 SKID STEER LOADER



2000

GMC SCHWARZE A4000 SWEEPER TRUCK

We Would Like to Wish Everybody a Happy Holiday!



FIRST CAPITOL AUCTION INC.

COMMERCIAL LIQUIDATORS & APPRAISERS

50 Solano Ave., Vallejo, CA 94590

For more information call (707) 552-0739

Visit our Website at www.1stcapitolauction.com

or e-mail us at: auctioncap@aol.com

Liquidators & Appraisers

CSL #A1621

NO MINIMUM ★ NO RESERVE

PUBLIC AUCTION

PACIFIC GAS & ELECTRIC



San Francisco Bay Area Gov't Agencies

3 AUCTION RINGS ★ ALL SELLING ONE DAY

SATURDAY, DECEMBER 17, 2011
AT 9:00 A.M. SHARP

INSPECTION: Friday, December 16, 9:00 A.M.–4:30 P.M.

50 SOLANO AVENUE, VALLEJO, CALIFORNIA 94590

AUCTION HELD RAIN OR SHINE!

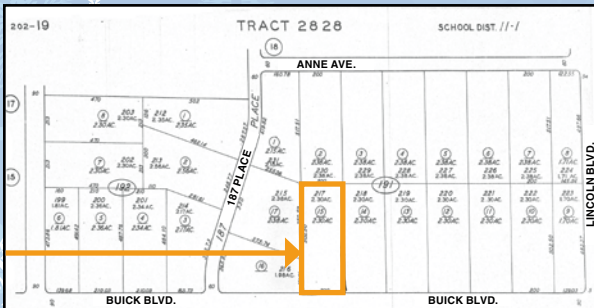
QS-0011075



Presorted
First Class Mail
U.S. Postage
PAID
Eugene, Oregon
Permit No. 17



REAL ESTATE PROPERTY AUCTION



All Taxes Paid

LOT 1 – 2-1/3 Acres
Located on Buick Blvd.,
Between Oldsmobile & Lincoln

Tract 2828; Block 217; APN# 202-191-15-00-9;
Kern County, California

Real Estate Lots
to Be Sold
at the
First Capitol
Auction Facility
Before the
Fleet Vehicles
Approximately
11:00 A.M.

Inspection Will Be
Available the Week of
December 12–17



All Taxes Paid

LOT 2 – 2 Acres
Located on 12th Street & Madison
Twin River Ranchos

Unit 3; Lot 8; Block 29; APN# 025-029-008;
Elko, Nevada



FIRST CAPITOL AUCTION INC.

LIQUIDATORS & APPRAISERS ★ (707) 552-0739 ★ Vallejo, CA