



MITCHELL
INSTITUTE

SENATOR GEORGE J. MITCHELL
SCHOLARSHIP RESEARCH INSTITUTE

ahead of the curve

2010-2011 ANNUAL REPORT



table of contents

- 1 Mission
- 2 Workforce: The Economic Impact
- 3 Leadership and Service
- 4 Workforce and Leadership
- 5 Service
- 6 Pioneer Scholar Awards
- 7 Financial Summary
- 8 Support for Career Exploration
- 9 Alumni Council
- 10 Stephen B. Center Diversity Leadership Scholarships
KeyBank Mitchell Scholars
Shepard Lee Pioneer Award
- 11 Harold Alfond Pioneer Award
- 12 William J. Ryan Pioneer Award
- 13 Investing In Maine's Future
Special Giving Programs
Cumulative Gift Donors
- 14 Donors
- 16 Board of Directors,
Advisory Board,
Staff & Alumni Council
- 17 2010 Mitchell Scholars

Graphic Design:
Greater Good Marketing

Credits:
Pgs. 6 & 10 Tim Byrne Photography

a message from the board of directors

Since its inception, the Mitchell Institute has been about Maine and Maine's young people. We are keenly aware that the students we help to educate and support today will be the workers, leaders and volunteers of tomorrow. There are already over 1,300 Mitchell Scholars who have earned their college degree. Many are pursuing graduate studies and most are working right here in Maine.

When Senator Mitchell created this scholarship in 1994, he did so with two goals in mind. The first was to help young people in the ways in which he had been helped as a young man. And the second was to support the state's efforts to create a more educated workforce for the new century.



With \$8 million provided in support to over 1,800 Maine students so far, we are well on our way to having this lasting impact.

Already we can see the difference this program makes in the lives of the young people we serve. And as these Mitchell Scholars join the ranks of our teachers, our doctors, our policymakers and our business leaders we can also begin to see the impact on the state.

Thank you for your support of this important and effective program. Together we are creating a more promising future for our young people—and our state.

David E. Johnson
Board President

the mitchell institute mission

Since its founding, the Mitchell Institute has worked hard to ensure that our Mitchell Scholars are **“ahead of the curve”** when it comes to their career and personal development. By selecting one graduating senior from every public high school in Maine—every year—we have the opportunity to work with a wide range of students of diverse backgrounds and interests. And by providing myriad, ongoing opportunities for support we help our Scholars and our Alums position themselves for a bright future.

We are at the leading edge of positive change for Maine: preparing young people for the jobs of tomorrow while also deepening their connections to their home state. We keep them anchored even as they reach for the stars. Mitchell Scholars are selected on the basis of three criteria: academic potential, community service and financial need.

By combining personal support and career exploration with the financial support of

the scholarship, we help the whole Scholar develop to reach his or her highest and best potential. This pays great dividends for the student, and for the state.

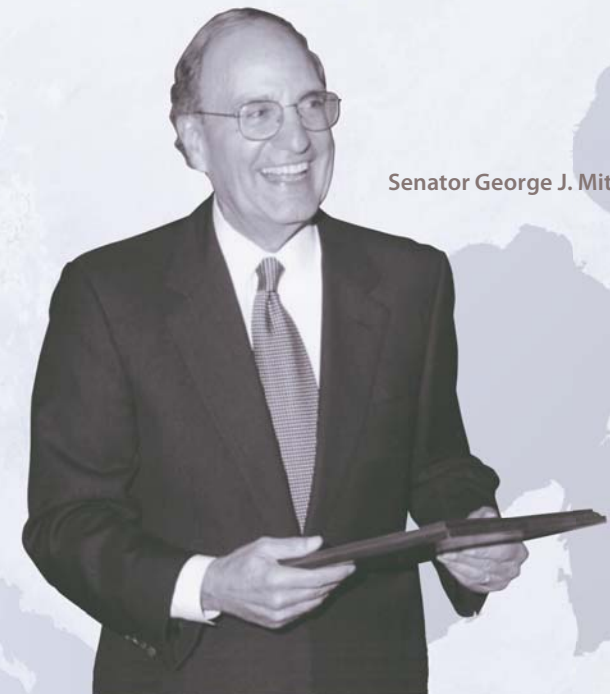
Working one-on-one with our scholarship recipients allows us to build strong relationships that make a difference in their lives. And they, in turn, make a difference to others—volunteering in their communities and on their campuses.

Even as we are clearly focused on the individual students whom we serve, we are also working strategically to ensure that the collective impact of our investment in these Mitchell Scholars benefits the state as a whole.

Workforce. Leadership. Community & Service. These are the by-words of the Mitchell Scholars and the Mitchell Scholarship Program.



ahead of the curve



Senator George J. Mitchell

workforce: the economic impact

Lauren Duplin graduates this spring from the University of Maine with a degree in Accounting. Before she graduates, she will have taken the first of her CPA exams. And she will walk across the stage and reach for her diploma confident in the knowledge that she has a job.

Lauren is a hard-working student who is savvy about taking advantage of opportunities given to her. And she is smart enough to know that persistence pays off. After getting to know
Scholars and staff

CAREER EXPLORATION is at the core of many of the Mitchell Institute's programs and opportunities offered to our Scholars and Alums.

Whether reviewing resumes, making a call on behalf of a Scholar, or sitting over coffee to talk about the future, the Mitchell Institute staff and Board regularly serve as a resource for our Scholars and Alums. We offer programming that provides insight on career paths, help identify and secure internships that allow for career exploration and skill-building, and more and more connect current Scholars with Alums in their fields of interest. We have Alums come to us several years after graduation,

at a leadership retreat, she followed up to seek our help in securing a summer internship. It took several tries, but Lauren was persistent—and so were we. She ultimately joined several other Mitchell Scholars working at BIW last summer. They were looking for engineering students and, primarily, business students. Lauren

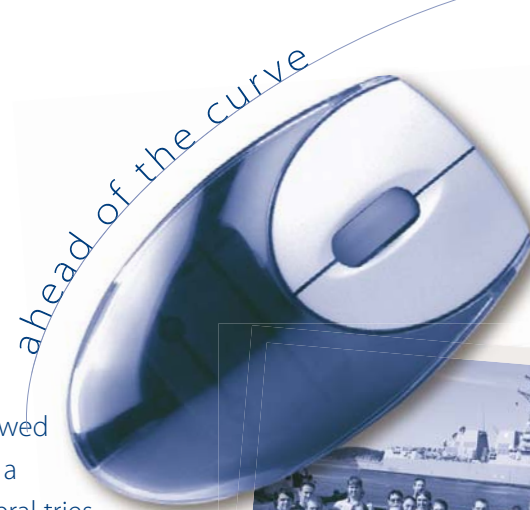


had a great experience, building both networks and skills.

looking to come back to Maine to work and asking for our help.

These kinds of resources and connections not only help our Mitchell Scholars in their professional development, they also provide opportunities for broader awareness and deeper connection with opportunities right here in this state we care about so deeply.

The cumulative effect of all of this: workforce development for Maine.



In the fall, knowing she is an Accounting major, we invited Lauren to join 50 or so other Mitchell Scholars at our annual Fall Gala dinner. And we seated her at a table sponsored by Macdonald Page. Long story short, she starts there in September as a Staff Accountant!

Lauren is a classic Maine kid, and a classic Mitchell Scholar. She worked hard and did her part—and so did we. The end result is good for her, and good for Maine.

LEADERSHIP & SERVICE

This year's MILE program was spent, as most of the programs have been, at the New England Outdoor Center in Millinocket. The weekend began with a visit from the park ranger, to introduce our Scholars to the history of Baxter State Park. This was in preparation for the next day's hike on various park trails. One group ascended the peak—where they enjoyed some early snow with the spectacular fall foliage. Another group hiked to Chimney Pond. And a third group took a more leisurely trek in to Katahdin Lake. Whichever path they chose, Scholars had the opportunity to connect with one another and with the beauty of the state. Many commented they had never had the opportunity to come to Baxter even though they had grown up in Maine.

Since the MILE weekend was being held a few short weeks prior to the gubernatorial elections, we created a program as part of the experience that asked the

Scholars to articulate a Vision for Maine. The viewpoints expressed by the students covered many topics and a wide range of perspectives. Students were thoughtful, insightful and respectful. All spoke with pride and a clear sense of place when they talked about their home state. Among the questions we asked our Scholars:

- What are the factors that will influence your decision to stay in Maine or to leave after graduation?
- What kinds of factors will influence your decision to return to Maine if you do leave?
- What do you think should be the top 3



priorities
for our new
Governor?

- What is YOUR vision for Maine?

We had the opportunity to then share this vision with members of the Legislature at a forum in December. For more information on this project and to see a sample of student responses to the exercise, visit www.mitchellinstitute.org.

The weekend concluded with the Scholars pitching in to clear brush on nearby trails owned by the Nature Conservancy. As always, the MILE weekend proved to be a terrific vehicle for creating connections and for helping our Scholars to understand more deeply their role as future leaders of the state.

MILE Weekend

Each year the Mitchell Institute hosts a weekend retreat for our Scholars. We call it MILE—the Mitchell Institute Leadership Experience. Sponsored by Unum, the weekend provides an outstanding opportunity to build connections between and among Scholars and staff. Through programs and activity, we work on leadership skills and teamwork. The tone of the weekend is informal and thoughtful. Programs have covered such topics as ethical

decision-making, facilitative leadership and career and personal development training. Students challenge themselves, and each other, even as we build a sense of community and teamwork by coming together to tackle challenging activities. Community service is always an integral part of the weekend and, for many of our Scholars, the highlight.

When the program first developed we saw it as an opportunity to help our Scholars develop their leadership skills. What we have come to understand, and appreciate, over time is that it also serves the role of developing a cadre of leaders among our Mitchell Scholars. These are the students that we know best, and who we can count on to help with new programs and other important efforts. By giving something of value to them, we receive something of value in return.

workforce & leadership

MILE II. This year's MILE II day had a theme that will sound familiar: *Ahead of the Curve*. Scholars and Alums from across the state and even outside its borders came together to listen, learn and roll up their sleeves.

Morning sessions included keynote remarks by a Maine teacher who is also a member of the Legislature, followed by a panel discussion led by four young professionals and emerging leaders, who shared tips and insights on how to position oneself in a recovering economy.

Following lunch, participants broke into groups to engage in several exercises: mock interviews, resume review and a group networking exercise.

The day closed with remarks from Portland Press Herald columnist Bill Nemitz who shared his own professional journey and reminded Scholars and Alums that very few successful professionals move in a straight line from their undergraduate studies to the pinnacle of their career.



In addition to the one-on-one support we routinely provide to our Scholars and Alums, the Mitchell Institute also offers numerous programs that help support career exploration and professional development.

One of these programs, described in greater detail on p. 8, provides modest financial support to ensure that Scholars and Alums can say Yes to great opportunities that come their way.



Ahead of the Curve



Another of these programs, one we call "MILE II", takes the form of a day-long conference for Scholars and Alums that creates a venue in which they can hear from current professionals across different industry sectors and participate in interactive sessions to help them hone their skills. The program is hosted by our

friends at Unum, planned and implemented by our Alumni Council, and is available at no cost to our Scholars and Alums.

DUSTIN GRAHAM

Dusty Graham is a classic Maine kid. He grew up in Aroostook, graduated from Presque Isle High School two years ago, and is a hard worker who really “gets” what it means to be part of a community. He has worked at the local IGA while in high school and during his two years at Northern Maine Community College. An active member of Aroostook Teen Leadership Camp program, he has also been involved in community theater and numerous teams and activities at NMCC including the school soccer team, serving as Vice President of the Student Senate, and participating in numerous planning committees—all while holding a work-study job in the Development and College Relations Office. When he graduates this spring from NMCC with an associate’s degree in Liberal Studies, Dusty will go on to the Alumni and Friends Board of the college. Among his many community service projects in the region, Dusty coordinated



the Children’s Book Drive at NMCC that culminated in the distribution of over 3,000 books to children in Presque Isle during the annual Light Parade.

Next fall, Dusty resumes his studies at the University of Maine, where he is excited to transition into a secondary education major. While in Orono, he fully expects to be involved both on and off campus and has already inquired about how to connect with other Mitchell Scholars at UMaine.

Dusty’s goals are to teach at the high school level, perhaps ultimately moving into administration—and becoming a published author.

SERVICE

Service is a way of life for many of our Mitchell Scholars. Each year our Scholars and Alums volunteer a total of over 30,000 hours of community service—most of it right here in Maine. It is part of who they are when we select them, and we work hard to reinforce the value of service throughout their college years and beyond.

Most young people decrease their hours of community service after high school—but not our Mitchell Scholars. By providing opportunities for service, encouraging and celebrating service to others we continually reinforce its value and importance. In many cases, the service performed by our Mitchell Scholars deepens their connection to their home state.

Last fall a group of nearly 75 Mitchell Scholars from UMaine and Husson came together with business leaders in the city of Bangor to engage in a Bangor Beautification Day. A group of UMaine Mitchell Scholars came together last spring to clean up a baseball field in a nearby town, getting it ready for the upcoming little league season. And, of course, individual Scholars and Alums serve their communities in myriad ways each year.



Commitment to Others

PIONEER SCHOLAR AWARDS

2010 Paddy Frank Walsh Pioneer Scholar Award

Sam Portera

Limestone Community School
University of Maine Presque Isle

Recognizes a Mitchell Scholar who has overcome tremendous obstacles to achieve success.



2010 Ott Family Pioneer Scholar Award

Terri Bastarache

Gorham High School
University of Maine

Recognizes the Mitchell Scholar from Gorham High School, who has demonstrated academic promise and a history of community service.



2010 Sam L. Cohen Foundation Pioneer Scholar Award

Jaclyn McCurry

Biddeford High School
University of Maine

Recognizes the Mitchell Scholar from Biddeford High School in Mr. Cohen's hometown.



2010 Leon and Lisa Gorman Pioneer Scholar Award

In honor of Senator George J. Mitchell

Nathan Kinney

Mt. Abram High School
University of Maine

Recognizes a Mitchell Scholar who has demonstrated strong qualities of leadership, character, and hard work.



2010 John & Nellie Jackson Pioneer Scholar Award

Patrick Gallagher

Telstar High School
Maine Maritime Academy

Recognizes a student who will be attending Maine Maritime Academy and who represents personal humility and hard work.



2010 Sam L. Cohen Foundation Pioneer Scholar Award

Kim Dao

Thornton Academy
University of Maine

Recognizes the Mitchell Scholar from Thornton Academy.



2010 George & Mintaha Mitchell Pioneer Scholar Award

Ameena Khan

Waterville High School
Bowdoin College

Recognizes the Mitchell Scholar from Waterville High School, Senator Mitchell's alma mater.



2010 Janet Fraser Mitchell Pioneer Scholar Award

Hannah Belanger

Upper Kennebec Valley High School
Colby College

Recognizes an outstanding Mitchell Scholar at Colby College.



2010 Bath Iron Works - Buzz Fitzgerald Pioneer Scholar Award

Mallory Plummer

Morse High School
University of Vermont

Recognizes a Mitchell Scholar who is a child or grandchild of a BIW employee, and who embodies the characteristics of leadership and compassion for which Buzz Fitzgerald was known.



2010 Morton K. & Jane Blaustein Foundation Pioneer Scholar Award

Honoring the life of Morton K. Blaustein

Kim Lim

South Portland High School
University of Southern Maine

Recognizes first-generation college students and students from recently immigrated families.



2010 Jack and Charlie Canning Pioneer Scholar Award

Andy Estrada

Hall-Dale High School
Colby College

Recognizes a Mitchell Scholar from the greater Augusta area who has demonstrated academic growth, leadership, and enthusiasm for the community.



2010 Casella Environmental Pioneer Scholar Award

Teresa Cooper

Nokomis High School
Bates College

Recognizes a Mitchell Scholar who is entering the field of environmental studies.



2010 Mitchell Senate Staff Pioneer Scholar Award

In memory of Gayle Cory

Kaylie Thornton

Carrabec High School
Thomas College

Recognizes a student whose love for the state of Maine, belief in public service, faith in people, and dedication to the greater good are a model for all.



2010 Walt Disney Company Pioneer Scholar Award

Cassandra Engstrom

Ellsworth High School
University of Southern Maine

Recognizes a Mitchell Scholar who has demonstrated an interest and talent in the arts.



2010 George J. Mitchell Pioneer Scholar Award

Alex Cornell du Houx

Carrabec High School
Bowdoin College

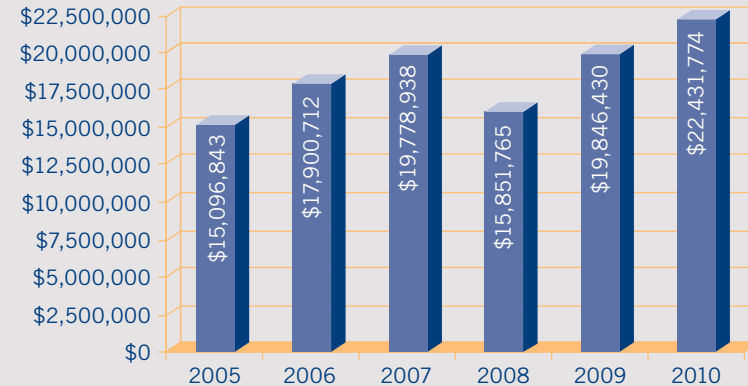
Recognizes a Mitchell Scholar alumnus who has demonstrated a deep commitment to the Mitchell Institute and its work.



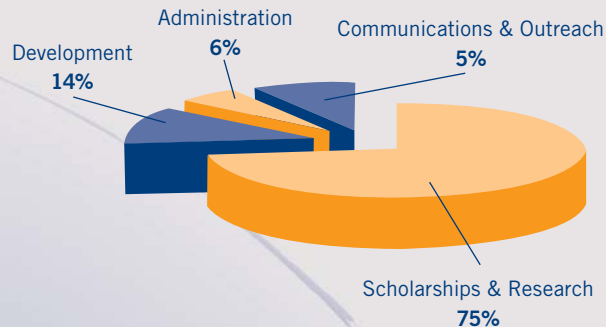
endowment growth report & cash flow summary | december 31, 2010

Scholarship Endowment Growth Report	Jan-Dec 2009	Jan-Dec 2010
Beginning Balance	<u>\$15,851,765</u>	<u>\$19,846,430</u>
Individual Gifts	235,886	311,475
Corporate/Foundation Gifts	-	-
Contributions Receivable *	17,287	399,841
Net Investment Income	3,853,242	2,356,528
Total Contributions	4,106,415	3,067,844
Less: Scholarships Paid 2009-10 (Net) **	(99,250)	(482,500)
Other	(12,500)	-
Year Activity, Total	<u>3,994,665</u>	<u>2,585,344</u>
Ending Balance	<u>\$19,846,430</u>	<u>\$22,431,774</u>

Endowment Growth | 2005–2010



Functional Expense Ratio | 2010



Revenue and Expense Summary

Revenue		Expense	
Contributions	\$775,668	Development	\$200,974
Transferred From Endowment	482,500	Communications & Outreach	73,115
Prior Year Carry-over	<u>214,101</u>	Scholarship & Research	1,087,689
Total Revenue	\$1,472,269	Administration	<u>90,113</u>
		Total Expense	\$1,451,891
		Excess Revenue over Expense ***	\$20,378

* Excludes pledge payments received on prior year pledges.

** Payments in 2010 were paid from the scholarship endowment. A significant portion of the 2009 payments were paid with grant dollars; however, some endowment funds were used.

Institutional Endowment Growth Report	Jan-Dec 2009	Jan-Dec 2010
Beginning Balance	-	-
Corporate/Foundation Gifts	-	500,000
Ending Balance	-	<u>\$500,000</u>

cosa scholars



Noah Burke

Camden Hills
High School,
Bates College

Noah used his grant to intern with Youthlinks, where he created a program in his home town that helped high school students connect with volunteer opportunities in their community.



Paige Piper

Poland Regional
High School,
Bentley University

Paige used her grant to cover transportation costs for her daily commute from Minot to the South Portland offices of Wright Express, where she helped the company refine and define their corporate giving program.



Eric Brooks

Narraguagus
High School,
University of Maine,
Farmington

Eric used his grant to intern with the Maine Farm Bureau, gaining valuable experience as he learned about policy matters and worked to plan the Youth Agricultural Policy Summit



Casandra Engstrom

Ellsworth High School,
University of
Southern Maine

Casi, a music major, utilized her grant to support an internship with the Portland Symphony Orchestra, where she worked on everything from archival research to press and social media communications.

support for career exploration

Each year the Mitchell Institute awards a number of small, additional grants to Mitchell Scholars and Alums to help them pursue career and personal development opportunities. These programs—formerly known as COSA (Career Opportunity Summer Awards) and ACAP (Alumni Council Awards Program)—have now been restructured and renamed the Mitchell Fellowship Awards. Through a generous grant from the J.A. & E.S. Hughes Fund at the Maine Community Foundation, we will be able to make awards totaling \$35,000 in each of the next four years beginning in the spring of 2011.

In more recent years, these grants were funded through contributions from a variety of foundations, corporations and individuals. The following is a small sample of the kinds of opportunities this program has supported in recent years.

The Mitchell Institute Alumni Council has been part of the Mitchell Institute for more than eight years now. This group of dedicated alums—ably led by Alex Cornell du Houx and Dakotah Atchinson—provide inspiration, support and ideas to help our programming for Mitchell Scholar Alums grow. Through monthly conference calls and occasional in-person meetings, the Alumni Council has been the driving force behind the MILE II day (see p. 4). The Council has also worked hard to foster connections among Alums and between Alums and current Scholars. With a new Scholarship Director coming on board this spring, the Alumni Council members are eager to put their great ideas into action and to help ensure the Mitchell Institute sustains its relevance and value as a resource long after graduation.



Jason Long/the alumni council

Jason Long—a graduate of South Portland High School and Bowdoin College—is now in his sixth year of teaching at Oxford Hills Comprehensive High School. He recently had the experience of having lunch at our MILE II program (see p. 4) with one of his former students, Mariah Kimball, who was the 2010 Mitchell Scholar from Oxford Hills. Jason tells us that two other Mitchell Scholar Alums join him on the faculty at the high school today!

Like many Mitchell Scholars, neither of Jason's parents attended college. Also like many Mitchell Scholars, Jason has from the outset been keen to take advantage of the opportunities provided to him through the Mitchell Institute—leadership weekends, professional development opportunities, and personal support. He also found that informal connections with people like former longtime Commissioner of Education in Maine, Duke Albanese, were instrumental in his decision to stay in Maine after graduation.

Jason has for several years been a member of the Mitchell Institute Alumni Council (see left).

We are excited that Jason was recently invited to join the Mitchell Institute Board of Directors—our first Mitchell Scholar to serve in that role.

He recently sent a note to Senator Mitchell, expressing his thanks for the opportunities provided to him by the Mitchell Institute. Included in that letter was the following sentiment, ***“Upon reflection I can say that nothing, aside from my family, has been as important to who I am as the support I have received from the Mitchell Institute team. In the end, I am proud because by their example I know the full measure of what it means.”***



STEPHEN B. CENTER DIVERSITY LEADERSHIP SCHOLARSHIPS

sponsored by a grant from Unum

Every year, Unum supports the Stephen B. Center Diversity Leadership Scholarships, which honor Mitchell Scholars who have shown great leadership in the area of diversity.

Senator Mitchell with several of the 2010 Stephen B. Center Scholars.



Brooke Swanson

Mount Desert Island High School
University of New England

Kimberly Dao

Thornton Academy
University of Maine

Joice Bongomin

Portland High School
Southern Maine Community College

Vinh Nguyen

Rockland District High School
Indiana State University

Nathan Davis

Casco Bay High School
Bates College

KEYBANK MITCHELL SCHOLARS

Each year, sixteen Scholars—one from each county in Maine—are selected as KeyBank Mitchell Scholars. KeyBank underwrites these \$6,000 scholarships, which are awarded with preference to students who are the first in their family to go to college.

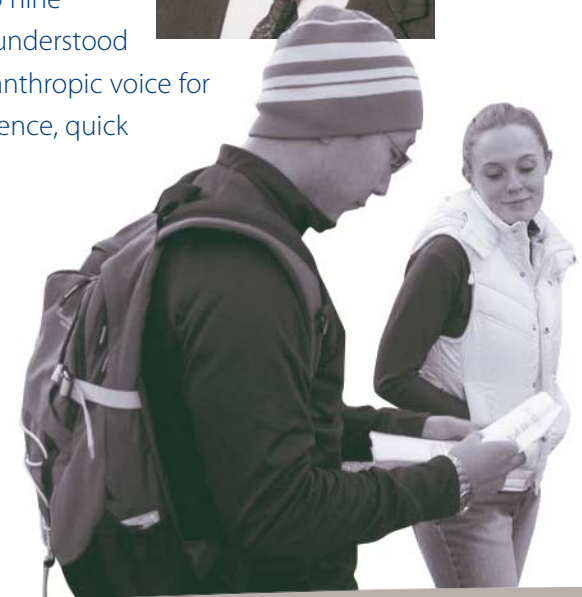


Senator Mitchell with several of the 2010 KeyBank Mitchell Scholars.

The Shepard Lee Pioneer Award

Shep Lee was one of George Mitchell's oldest and dearest friends. With Shep's passing last summer, the Mitchell Institute lost one of its staunchest supporters and longest-standing Board members. A successful entrepreneur known for his integrity and commitment to community, Shep led his family business, Lee Auto Malls, from a single location car dealership to nine dealerships across the state of Maine. Shep understood the importance of education and was a philanthropic voice for that cause and many others. His gentle presence, quick wit and kindness will be greatly missed.

The Mitchell Institute joins Shep's family in honoring his lasting legacy to Maine with this Pioneer Award. Beginning this year, the Mitchell Scholar from Lewiston High School—Shep's hometown—will be known as the Shepard Lee Pioneer Mitchell Scholar.



Ann-Marie Beverage

North Haven Community School
Southern Maine Community College

Benjamin Denison

Edward Little High School
University of Maine

Brett Lyons

Washington Academy
Maine Maritime Academy

Harold Alfond Pioneer Award

Harold Alfond was a noted Maine businessman and philanthropist. Perhaps best known in the business community for founding Dexter Shoe and creating the model for the factory outlet,



Mr. Alfond is also both known and loved throughout Maine for his tremendous generosity. He

established the Harold Alfond Foundation, the first private foundation in Maine, in 1950.

Mr. Alfond brought a lifelong commitment to the people of Maine and was deeply committed to his charitable causes. He brought his business mindset to his philanthropy by partnering with organizations he felt were well run and had important missions, and by fostering teamwork and partnerships through his challenge grants.



The Mitchell Institute is honored to partner with the Alfond Foundation in many ways, including the visionary Harold Alfond College Challenge — Mr. Alfond’s legacy gift for every Maine baby.

Beginning in 2011, the Mitchell Scholar selected from Dexter High School and from Messalonskee High School will be known as Harold Alfond Pioneer Mitchell Scholars.

ahead of the curve



Cassandra Leighton
Massabesic High School
University of Southern Maine

Daniel Kiley
Mountain Valley High School
University of Maine Farmington

Johanna Verney
Wiscasset High School
St. Joseph’s College

Jordan Faloon
Penobscot Valley High School
University of Maine

Kaylie Thornton
Carrabec High School
Thomas College

Kelsey Tucker
Sumner Memorial High School
University of Maine

Kim Lim
South Portland High School
University of Southern Maine

Kory Peckham
Gardiner Area High School
University of Maine Augusta

Mallory Bonnevie
Jay High School
University of Maine Farmington

Megan Duprey
Van Buren District Secondary School
Husson University

Nicholas Knight
Mount View High School
University of Maine

Rebeka Bryer
Mt. Ararat High School
Wheaton College

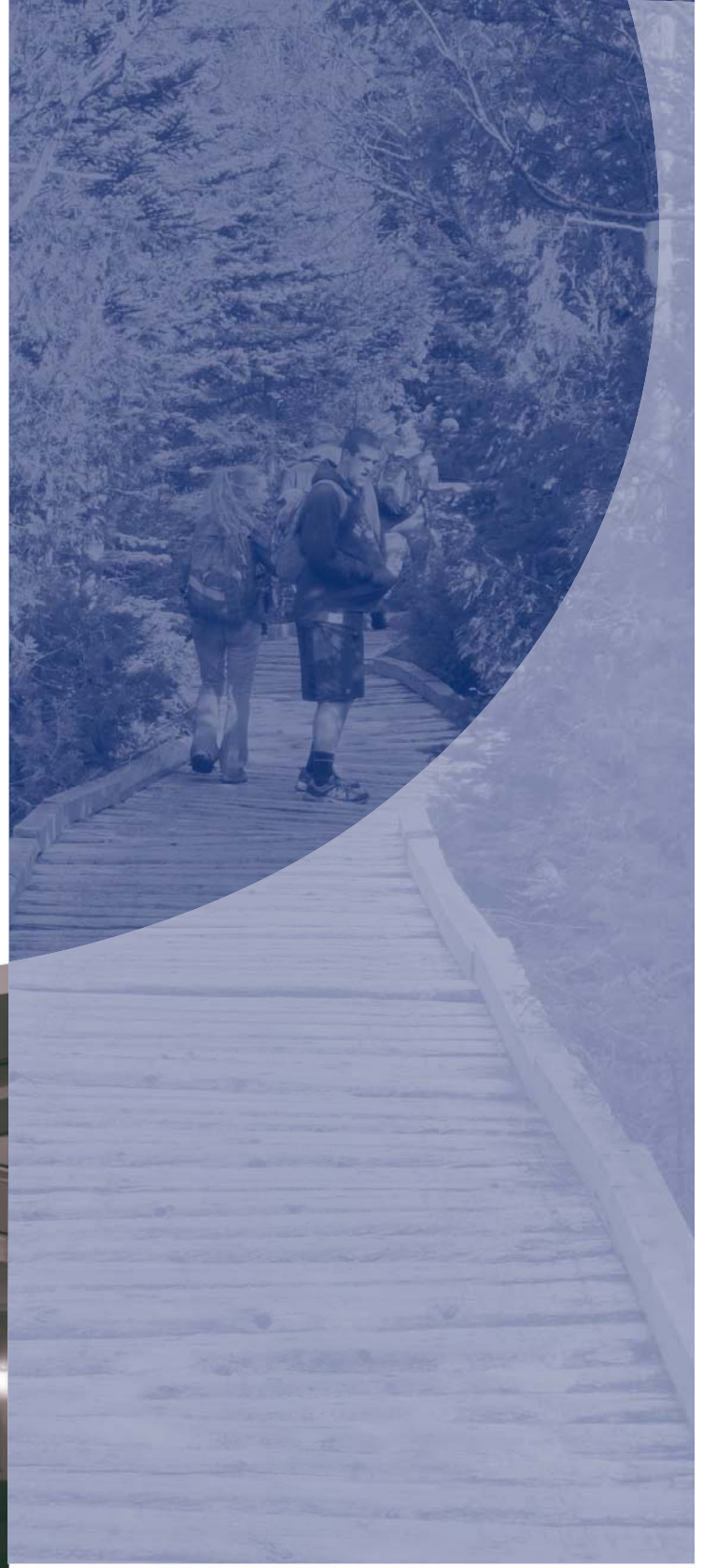
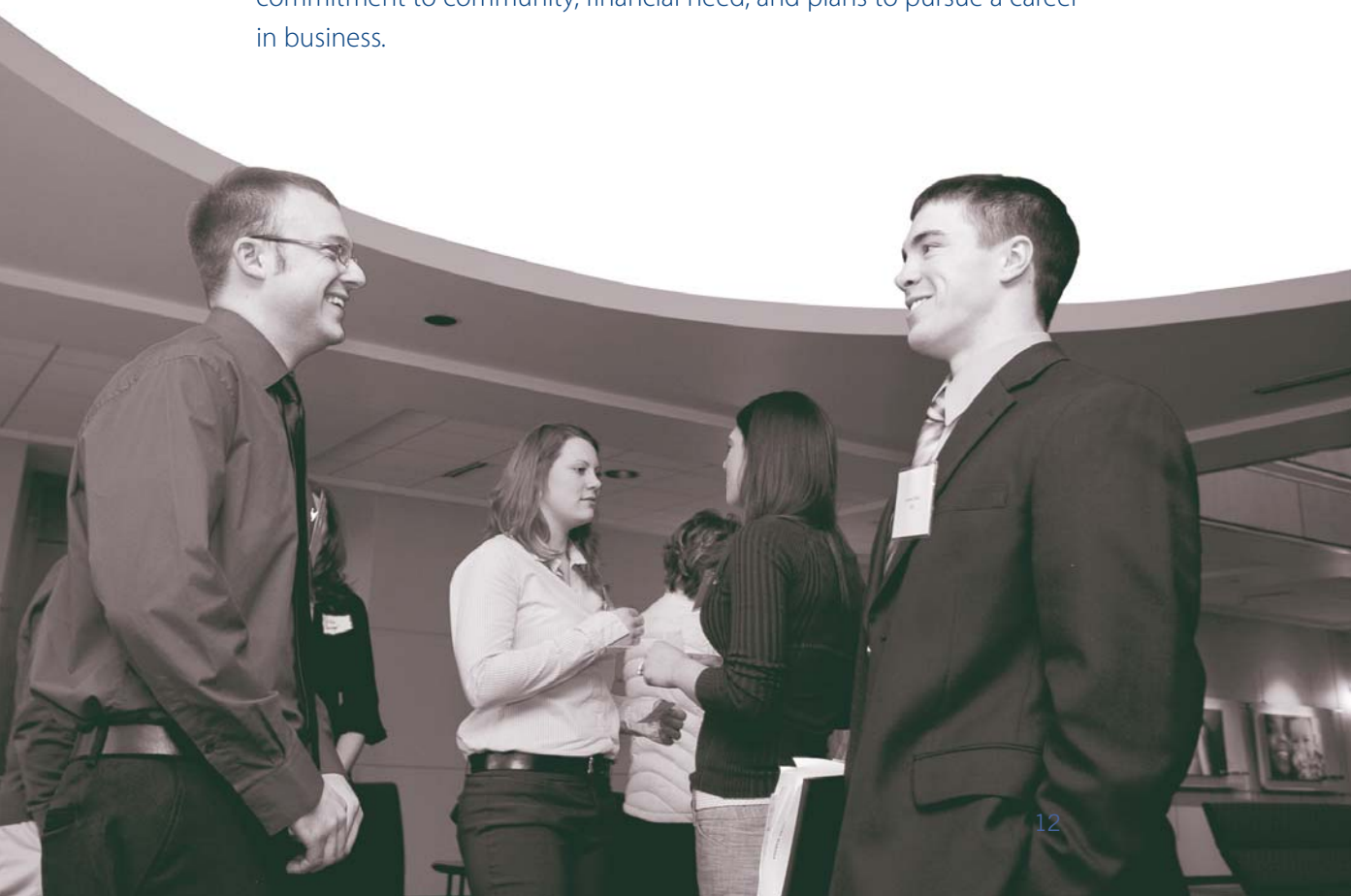
Saige Weeks
Greenville High School
University of Maine

William J. Ryan Pioneer Award

The Mitchell Institute and TD Bank are pleased to recognize and honor Bill Ryan with this Pioneer Award. Bill's many years of service to the bank—and to Maine—make this award especially meaningful. Our Mitchell Scholars exemplify the kind of commitment to community that Bill exhibited in both his professional and his personal life. This award will be a special honor among our Mitchell Scholars due to the integrity and respect with which people hold Bill Ryan.



Each year the Mitchell Institute will select from among its Mitchell Scholars a William J. Ryan Pioneer Mitchell Scholar—a student who has demonstrated commitment to community, financial need, and plans to pursue a career in business.



investing in maine's future

The work of the Mitchell Institute is made possible because of the generosity of those who believe in the program's mission and have stepped forward to help secure the future prosperity of Maine and its young people. Through their generous gifts, these individuals, businesses, and foundations are making a significant impact on the quality of life for Maine and its citizens.

Making a Financial Commitment You can make your financial gift to the Mitchell Institute by cash, check or money order, stock transfer or credit card. On-line donations may be made at www.mitchellinstitute.org. Please call our office (207) 773-7700 if you have questions or need assistance in making a gift. Some gifts provide more tax advantages than others, making it easier to achieve financial goals.

The Mitchell Institute has tax-exempt status under section 501(c)(3) of the Internal Revenue Code. All donations are deductible for federal and state income tax purposes to the full extent provided by law.

SPECIAL GIVING PROGRAMS

Millennium Awards honor important donations to the Mitchell Institute. They signify contributions of at least \$50,000.

Pioneer Awards are our signature scholarship naming opportunity for donors who support the Mitchell Institute at the \$125,000 level. This unique partnership between the donor and the Mitchell Institute provides the opportunity to honor individuals, groups or businesses for their achievements through the naming of an annual scholarship that will be given in perpetuity in the name of the Pioneer donor or the Pioneer's designee. The Pioneer Scholarship Program also enables the Mitchell Institute to honor certain Mitchell Scholars, who, through their contributions to school and community—and their demonstration of certain exemplary qualities as students and as citizens—stand out for acknowledgement.

Founders Awards are typically bestowed upon individuals and organizations who are already Pioneer donors and whose additional gifts bring their cumulative giving total to \$250,000 or more.

THESE AWARDS HONOR CUMULATIVE GIFTS TO THE MITCHELL INSTITUTE

FOUNDERS AWARDS (\$250,000+)

The Harold Alfond Foundation
Anonymous (4)
The Betterment Fund
Sam L. Cohen Foundation
Bill & Melinda Gates Foundation
Leon & Lisa Gorman KeyBank
Nellie Mae Education Foundation
TD Bank
Unum
Tom & Linda Walsh

PIONEER AWARDS (\$125,000-\$249,999)

Anonymous (2)
Anonymous in honor of Senator George J. Mitchell
Bath Iron Works in memory of Buzz Fitzgerald
Morton K. & Jane Blaustein Foundation
Casella Waste Systems, Inc.
The Friedman Family in honor of Janet Fraser Mitchell
Mickey & Kathi Greene in memory of John & Nellie Jackson
George & Heather Mitchell
The Mitchell Family in memory of George & Mintaha Mitchell
Mitchell Senate Staff in memory of Gayle Cory
The David & Martha Ott Family
Pine State Trading in honor of Jack & Charlie Canning
Felicity Reynolds & David Kerr
Walt Disney Company

MILLENNIUM AWARDS (\$50,000-\$124,999)

Anonymous in honor of Senator George J. Mitchell
Bank of America
Estate of Macky Bennett
Mr. Charles Butt
Central Maine Power/Energy East Foundation, Inc.
FedEx Corporation
Jane's Trust
William Sloane Jelin Charitable Foundation
David Johnson & Charrisse Kaplan
L.L. Bean
Lee Auto Malls
Levine Family Foundation in memory of Arthur B. Levine
Carol Mitchell
Christopher & Nancy Pierce Charitable Foundation
Bill & Peg Ryan
Verizon

CENTURY AWARDS (\$25,000-\$49,999)

Tim & Aileen Agnew
Anonymous
Estate of James Boyd
Marjorie McHenry Bride
Bob & Brenda Daigle
Shelby Cullom Davis Foundation
GHM Insurance Agency
William Hiss & Colleen Quint
Jeff & Martha Leathe
Shepard & Candice Lee
Emanuel & Pauline Lerner Foundation
Elaine Gorbach Levine Charitable Foundation
Maine Community Foundation
Bill & Vicki Mitchell
Preti Flaherty Beliveau & Pachios
Linda Mitchell Price Charitable Foundation
Swardlick Marketing Group
Time Warner Cable of Maine
Daniel & Sheryl Tishman
Richard J. Warren
Wright Express

2010 DONORS

SENATOR'S CIRCLE

Anonymous (4)
GHM Insurance Agency
Bob and Tricia Quirk
Harold and Claudia Bokinsky Pachios
Joseph Foley and Patricia O'Carroll
Alere Scarborough
National Philanthropic Trust
Jack Katz
IDEXX Laboratories, Inc.
Bangor Savings Institution
Lee Auto Malls
Bill and Vicki Mitchell
Time Warner Cable-Northeast
Marjorie Bride
Senator and Mrs. George Mitchell
KeyBank
TD Bank
Unum
Mr. Donald Sussman
Mary and Harold Friedman
Timothy and Aileen Agnew
Casella Waste Systems, Inc.
Wright Express
Betterment Fund
Iberdrola USA Foundation
Christopher and Nancy Pierce Charitable Foundation
Bob and Brenda Daigle
David Johnson and Charrisse Kaplan
Sam L. Cohen Foundation
Mr. Thomas Walsh
Felicity Kerr and David Reynolds
Mr. Charles Butt
Estate of Macky Bennett
New York Community Trust
Ms. Carol Mitchell
Marriott Hotel at Sable Oaks
Mr. and Mrs. Leon Gorman
Jane's Trust
L. L. Bean Inc.
Harold Alford Foundation

LEADERSHIP CIRCLE

Chagit and Roger M. Deitz
Mr. and Mrs. Jeffrey Leathe
Paul Carliner
One Beacon Charitable Trust
Bangor Daily News

Central Maine Power
Schwab Charitable Fund
Cousins Charitable Foundation
Preti, Flaherty, Beliveau & Pachios, LLC
Greg and Donna Barmore
Mr. and Mrs. Eliot Cutler, Esq.
Sara J. and Robert Burns
Institute for International Sport
Mirimac Fund
Maine Community Foundation

PATRON

Anonymous (2)
Bob and Marcia Ellis
Caroline and Wayne Morong
Harry Konkell
Mark Porter
Mr. & Mrs. Clement McGillicuddy
Mr. & Mrs. Whitney Dickey
Alex Agnew and Lisa Markushewski
Mr. and Mrs. George Putnam
Mr. David Flanagan
Paula Volent
Peter and Kathleen Leslie
William Kennedy, Jr.
Colleen Quint and Bill Hiss
Bates College
Bowdoin College
Cloutier, Conley & Duffet P.A.
Morton K. and Jane Blaustein Foundation
Robert Levine and Vilean Taggersell
Merle and Leonard Nelson
Joyce McPhetres and Ronald Turcotte
Neil and Carla Rolde
Doyle & Nelson
Ray and Sandy Gauvin
L.L. Bean, Inc.
Morgan Stanley Smith Barney,
The Downeast Group
Great Schools Partnership
Daniel Goldenson
Diana Davis Spencer
Mr. and Mrs. Lawrence Pugh
Bath Iron Works
Friedman, Gaythwaite, Wolf & Leavitt
Macdonald Page Schatz Fletcher & Co., LLC
Maine Maritime Academy
Norway Savings Bank
Pine State Trading
Wein Hirshon Charitable Organization
St. Joseph's College

BENEFACTOR

Anonymous (1)
Andrew and Kathleen Greene
Charles and Judy Micoleau
Duke and Nancy Albanese
Edward and Emily Demetriou
Joe and Carole Long
People's United Bank
Melinda Monks
Mr. and Mrs. Robert Mitchell
Mr. and Mrs. William Eacho
Mr. H. Timothy O'Neil
Mr. Maurice Sonnenberg
Ms. Julie Canniff and Mr. Karl Smith
Ms. Louisa Anderson
Tina and Richard Levy
Aurora Financial Group LLC
Coca-Cola Scholars Foundation, Inc.
Husson University
Pan Atlantic Consultants
Phillips-Green Foundation, Inc.
Bruce and Virginia Henkle
Jeff and Alison Nathanson
Northeast Bank
Alpha Psi Chapter Delta Kappa Gamma
Mr. and Mrs. David Ott
Ms. Estelle Lavoie
University of Maine
University of Maine System
Peter and Donna Rubin
James Mitchell
Jon Edwards and Nancy Fox
Hannaford Brothers, Co.
Bill and Marge Medd
Stanford Management

SUPPORTER

Anonymous (2)
Abby Saffold
Ann Staples Waldron
Barry and Judith Valentine
Brad McCurtain
Carole Cory in memory of Donald Cory
Cynthia Howland
Francis G. Coleman
Franklin and Susan Burroughs, Jr.
Harley Knowles
Jacque Carter
Majid Anouar
Barbara Keefe

Mr. and Mrs. Albert Edson
Mr. and Mrs. Allan Walch
Mr. and Mrs. John Bielecki
Mr. and Mrs. Roger Griffith
Mr. and Mrs. William Newlin
Mr. Scott Carlisle
Ms. Amy Davidoff
Ms. Nancy Wilds, Ph.D.
Brann & Isaacson
East Coast Bio, Inc.
Harpwell Capital Management
Sites Realty
Sean Findlen
Greg Dean
Dick and Judy Lucas
Bob and Susie Peixotto
Charles Jacobs and Rebecca Stanley
Donna Beck
Edward and Priscilla Simmons
George and Virginia Kiesewetter
Greg Powell
Hal and Brigitte Kingsbury
Jean and John Marr
John and Anita Oliver
John Bragg
John Opperman
John Rohman
Larry Wold
Marianne and Robert Dodge
Michele Johns
Mike and Melissa Bourque
Mr. and Mrs. Charles Frost
Mr. Anthony Buxton and Ms. Elizabeth Hognlund
Mr. Jay McCloskey, Esq.
Mr. Michael Dubyak
Mr. Patrick McGowan
Ms. Ruth Yeazell
Ms. Toni Passerman
Pamela Angell and Richard Carr
Rollin and Averil Fessenden
The Honorable and Mrs. David Cohen
Black Bear Inn/Lafayette Hotels
Christine Williams in memory of Tom Bertocci
Mr. and Mrs. Elliott Barker, III
Mrs. Janet Mitchell
Johann von Hoffmann
Mr. Frank Moya, M.D.
Tom and Diana Allen
Mott Foundation
Mary Jane and Terrance Sheehan
Mr. Nicholas Gess
Peter and Karen Chapman
Phyllis and Bernard Givertz

Robert and Rosalie Thomas
Virginia Swain
William and Nancy Hanger
Mr. and Mrs. John Mitchell
United Way of Androscoggin

DONOR

Anonymous (5)
Mr. Russell Lovejoy
Kathryn Bacon and L Somos
Audrey Amidon
Jessica McGreehan
Katherine Curtis
Mr. and Mrs. Walter Turner
Ms. Patricia Winslow
Rachel Deans in memory of Tom Bertocci
Wesley and Donna King
Collin Henry
Ms. Patricia Luchetti
Mr. and Mrs. James McCarthy
Abbi Darling
Bruce and Joan Jenkins
Jessica Violette
Kate and Timothy Bathras
Megan Patey
Robert Guerette
Zacharie Boyce
Dale J. Gordon in memory of Tom Bertocci
David Martines
Dominic and Veronica Dolge
Hobart and Martha Denison
Iris Guimond
Jacqueline (O'Hare) Walker
Janet Silvers
Julie Kramer
Kevin Doyle
Kyle Crabtree
Leslie and Jill Fleisher
Malcolm Brackett and Sylvia Ritz
Marilyn Baer
Mark and Ruth Ann Wooster
Mark Lutte
Meris Esterly
Michael and Carol Ann Girman
Mr. and Mrs. David Beattie
Mr. and Mrs. David Turesky
Mr. and Mrs. Raymond Little
Mr. and Mrs. Robert White
David Plimpton and Mary Esposito
Mr. John Fitzpatrick, Jr.

Mr. Michael Beaudoin
Ms. Joan Root
Ms. Muriel Wilhelm
Nicholas Ordway
Robert and Anne Marie Bussey in
memory of Tom Bertocci
Sidney LeFavour
Stefani and Jeremy Foster
Susan Palfrey
Mr. and Mrs. Robert Clifford
Brooke Stowell and James Kline
Clinton King
Michele Martin
Mr. and Mrs. Burton Smith
Sandra Miller-Sanchez
Shannon Hulst
Deborah Weare Slavin
Mr. and Mrs. Robert Shaw
Ms. Ellen Klain
Ms. Lisa Tessler and Mr. Mark Ireland
Barry and Lori Saltz
Alexander Cornell du Houx
Craig and Linda Thulen
Mr. and Mrs. Michael Wormser
Ms. Vivian Mancine
Ezra Berry
Alex Gaeth and Alison Brown
Alice Aughtry
Aurilla Fusco Thibodeau
Charlotte Rahaim in memory of
Paula Cazeault
Donald Spicer and Nthakoana Peko in
memory of Tom Bertocci
Elaine Beaupain
Eugene and Joyce Long
Gary Vogel
Geoffrey Scott
George and Diana Hambleton
Charlie and Eddy Ann Dibner
Holly Weidner
Jeffrey and Susan DeBlois
Jo Ann Adams
John and Gillian Trattner
John O'Dea
Kathleen Armstrong
Mary and Wilbur Trautman
Marcia Harmon
Michael and Lee Wygant
Mr. and Mrs. Allen Brackett
Mr. and Mrs. Bruce Stedman
Mr. and Mrs. Dean Beaupain
Mr. and Mrs. Donald Goodwin
Mr. and Mrs. James Cummings
Mr. and Mrs. Richard Kronauer
Mr. and Mrs. Samuel Emerson

Mr. and Mrs. Stephen Allen
Mr. Jamie Kaplan, Esq. and
Ms. Suzanne Meeker
Mr. Samuel Greene and
Mrs. Phyllis Gansz-Greene
Mr. William D. Carr, Jr.
Mrs. Annette Rosen
Ms. Anne Campbell
Ms. Jan Phillips and Mr. Dennis Grafflin
Ms. Jean Potuchek
Piotr and Rachel Stamieszkin
Sarah and Chip Carpenter
Scot and Lorraine Miller
Senator and Mrs. Peter Bowman
Willard and Edith Sawyer
William and Suzanne Finn in memory
of William Burns
Maine Development Foundation
Mathew Greenwald & Associates, Inc.
National Semiconductor
Sun Journal/The Forecaster
Son Nguyen
Mr. and Mrs. Richard Lawrence
Beverly Bustin-Hatheway and Darwin
Hatheway Sr.
Mr. and Mrs. Edward Moriarty
David Hart
David Squires
George Seel in memory of Tom Bertocci
Melinda Davis
Mr. and Mrs. Charles Whitney
Mr. and Mrs. Peter Drivas
Mrs. Helene Quint
Ms. Margaret Samways
Ronald Severance in memory of
Tom Bertocci
Cassandra Cote Grantham
Alan and Donna M.W. Miller
Barbara and Richard Trafton
Barbara Atkins
Beverly and Donald Esson
Brett O'Brien
Chris and Betsy Keiter
Christopher Deering
David and Judy McKelvey
Deborah and Peter Murray
Dr. and Mrs. Peter Harbage
Dr. Edward and Dr. Candace Walworth
Elizabeth Cole
Ernest and Clarissa Elliott
Frederick and Jennifer Aronson
Guy and Patricia Norton Vaillancourt
Scott and Carrie McGilvery Logan
James and Jane Lester
Jan and Roberta Nagle

Janet Martin
Jeff and Ida Peterson
Jesse and Dara McIntire
John and Denise Cole
John and Marilyn Taylor
Judith Montgomery and
Paul D'Alessandro
Kala Hardacker
Laurence and Susan Ach
Lloyd Wolf
Mark Stillman
Maurice and Margaret Daigle
Monica Healy
Mr. & Mrs. Elliot Cohen and Joanne
Cohen
Mr. & Mrs. Richard Milliard and Ann
Milliard
Mr. and Mrs. Brian Rines, Ph.D.
Mr. and Mrs. Charles George
Mr. and Mrs. Eben Adams
Mr. and Mrs. Eli Zwicker, Sr. in memory
of Justin Eli Gerrish
Mr. and Mrs. Frederick Bishop
Mr. and Mrs. John Gower
Mr. and Mrs. Kevin Forrest
Mr. and Mrs. Lawrence Dwight
Mr. and Mrs. Michael Keller
Mr. and Mrs. Neil Jamieson, Jr.
Mr. and Mrs. Richard Goff
Mr. and Mrs. Robert Morrell
Mr. Andrew Cook and
Ms. Jacqueline Ellis
Mr. Daniel Hildreth
Mr. Desmond Fitzgerald and
Ms. Lucinda Ziesling
Mr. F. Kingston Berlew and Jeanne
Berlew, Esq.
Mr. Frederick Barton
Mr. John McNaughton
Mr. Merton Henry
Mr. Paul Machlin and Ms. Susan Sterling
Mr. William Harwood, Esq.
Ms. Ann Dorney and Mr. David Axelman
Ms. Jana Lapoint
Ms. Judith Johnson
Ms. Kathy Ouellette
Ms. Rosalind Lewis
Nan Sawyer
Oliver Fein, M.D. and Charlotte Phillips
Patricia and Arthur Hopkins
Richard and Michele Pattenaude
Richard and Tori Rosu-Myles
Richard LaChance
Ruth and George Thurston
Shelly Chasse-Johndro

Susan Peck
Tim and Anne Marie Samway
Toni Lynn Robbins
Tristan Noyes
Willard Hertz
Fidelity Charitable Fund
Just Give
Jason Long
Dakotah Atchinson
Clyde and Trudy MacDonald in memory
of Tom Betocci
Dr. Phillip Thompson, Jr.
Faith Williams in honor of Christine
Williams
Gene Moll
John James in memory of Tom Bertocci
Meg Haskell
Mr. and Mrs. Samuel Shapiro in memory
of Jack Plavin
Mr. and Mrs. William Lott
Mr. Michael Klein
Robert and Edith Schmidt
Samantha Howe
Loren Bowley Dow

GIFTS IN MEMORY OF SHEP LEE

Alexander Transport Inc. DBA Crafts
Transport
AlliedCook Construction
Barry Saltz D.D.S., P.A.
Cheri Walker
City of Old Town
Daniel Perkins
Elizabeth Moser
Finance Authority of Maine
Hurley Travel
Maine International Trade Center
Neokraft Signs Inc.
The Buckley Group of Portland, Inc.
Thomas and Gretchen Tietenberg
Grace Tagliabue
Marcy Plavin
Harry Larchian
Portland Press Herald
James and Bonnie Klein
James Hatch
Jean Bogner
Jean McQuade
Joel and Jill Botler
Jeb Balise Jr
John and Ann Bay
Jonathan and Nancy Aldrich

Mark Malone
Mr. and Mrs. Robert Daigle
Great Schools Partnership
Michael Cantara
Michelle Atherton
Mr. and Mrs. Sam Barouch
Mr. Frederick Pape, Jr.
Pauline Murray
Rabbi David J. Gelfand
Richard and Adele Aronson
Richard Berne
Robert and Lorraine Kingsbury
Robert Moriarty
Ryan and Stephanie Linnehan
Santo and Elizabeth Cimino
Spurwink Services
Stephen and Lisa Dickson
Suzanne and Andre Janelle
Thomas Davidow
Unifirst Corporation
Vincent and Anne Oliviero
William and Janet Randall
John Zumba
Nancy and Michael Marino
Bob and Marcia Ellis
L.L. Bean, Inc.
Nan Sawyer
Ms. Patricia Luchetti
Richard and Michelle Pattenaude
Sun Journal/The Forecaster
Ms. Madeline Corson
Ms. Jana LaPointe
Ms. Ellen Klain
Mr. William Harwood, Esq.
Mr. Merton Henry
Mr. H. Timothy O'Neil
Mr. Daniel Hildreth
Mr. and Mrs. Leon Gorman
Barbara and Leighton Cheney
Barbara and Michael Stoddard
Barbara and Richard Trafton
Barbara Atkins
Bill and Marge Medd
Brann & Jacobson
Bruce and Joan Jenkins
Guy and Patricia Norton Vaillancourt
Julie Kramer
KeyBank
Laurence and Susan Ach
Maine Community Foundation
Maine Development Foundation
Merle and Leonard Nelson

BOARD OF DIRECTORS

Senator George J. Mitchell
Honorary Chairman

David Johnson
Board President
Portland, Maine

Joseph Foley
Vice President
Portland, Maine

Tim Agnew
Treasurer
Portland, Maine

Mary Mitchell Friedman
Past President
Cape Elizabeth, Maine

Margie Bride
Watertown, Massachusetts

Sara Burns
Augusta, Maine

Charles de Sieyes
Falmouth, Maine

Charlie Dibner
Scarborough, Maine

Sterling Kozlowski
Portland, Maine

Estelle Lavoie
Portland, Maine

Catherine Lee
Westbrook, Maine

Jason Long
South Paris, Maine

Mary McAleney
South Portland, Maine

Marge Medd
Norway, Maine

Jeffrey Nathanson
Portland, Maine

Heather Mitchell
New York, New York

Merle Nelson
Falmouth, Maine

Linda Mitchell Price
Tulsa, Oklahoma

Tom Walsh
Bar Harbor, Maine

HONORARY BOARD

Bro Adams
Colby College

James Banks
Maine State Board of Education

Selma Botman
University of Southern Maine

Steve Bowen
Maine Department of Education

Robert Clark
Husson University

James Davis
Maine Counseling Association

Dori Fellman
Maine Educational Opportunity Association

John Fitzsimmons
Maine Community College System

Mark Gray
Maine Education Association

David Hales
College of the Atlantic

Allyson Hughes Handley
University of Maine Augusta

Elaine Tuttle Hansen
Bates College

Wilson Hess
University of Maine Fort Kent

Cynthia Huggins
University of Maine Machias

Theo Kalikow
University of Maine Farmington

Robert Kennedy
University of Maine

Gus LeBlanc
Maine Principals' Association

Joseph Lee
St. Joseph's College

Barry Mills
Bowdoin College

Richard Pattenau
University of Maine System

Danielle Ripich
University of New England

Roger Shaw
Maine School Superintendents Association

George Spann
Thomas College

Mitchell Thomashow
Unity College

Donald Tuski
Maine College of Art

Nicole Vachon
Maine Association of Student Financial Aid Administrators

Don Zillman
University of Maine Presque Isle

STAFF

Colleen Quint
Executive Director

Betsy Bowen
Development Director

Lisa Plimpton
Research Director

ALUMNI COUNCIL

Alex Cornell du Houx, '02
Co-chair
Carrabec High School
Bowdoin College

Dakotah Woitko Atchinson, '03
Co-chair
Fryeburg Academy
University of Southern Maine

Zach Boyce '03
Piscataquis Community High School
University of Maine

Loren Bowley Dow '00
Bonny Eagle High School
University of Maine

Alex Gaeth '00
Lincoln Academy
Colby College

Johann von Hoffmann '02
Orono High School
Colby College

Shelly Chasse Johndro '00
Wisdom High School
University of Maine Farmington

Jared Cash
Scholarship Director

Lisa Sirois
Accountant

Catherine MacKinnon
Administrative Assistant

Clinton King '00
Jay High School
University of Maine Fort Kent

Carrie McGilvery Logan '96
Yarmouth High School
Bowdoin College

Jason Long '01
South Portland High School
Bowdoin College

Michele Savage Martin '99
Scarborough High School
University of Maine

Son Nguyen '98
Bangor High School
University of Maine

Megan Patey '04
Kennebunk High School
Bates College

2010 MITCHELL SCHOLARS ■ **ANDROSCOGGIN COUNTY** ■ Edward Little High School, Benjamin Denison ■ Leavitt High School, Samantha Varney ■ Lewiston High School, Michelle Caron ■ Lisbon High School, Cameron Blouin ■ Livermore Falls High School, Willie Brown ■ Oak Hill High School, Erin Plant ■ Poland Regional High School, Brittany Nye ■ **AROOSTOOK COUNTY** ■ Ashland Community High School, Taylor Baker ■ Caribou High School, Kellie Moody ■ Central Aroostook High School, Ethan Stiles ■ Easton High School, Anna Sherwood ■ Fort Fairfield High School, Kelsie Wilson ■ Fort Kent Community High School, Amelia Steven ■ Hodgdon High School, Emmaly Jurson ■ Houlton High School, Jordan Codrey ■ Limestone Community High School, Salvadore Portera Jr. ■ Madawaska High School, Elisha Lizotte ■ Maine School of Science and Math, Kiri Strack-Grose ■ Presque Isle High School, Jordan Harris ■ Southern Aroostook Community School, Logan Desmond ■ Van Buren District Secondary School, Megan Duprey ■ Washburn District High School, Sydney Beckwith ■ Wisdom High School, Kayla Guerrette ■ **CUMBERLAND COUNTY** ■ Brunswick High School, Chelsea Bruno ■ Cape Elizabeth High School, Samuel Naseef ■ Casco Bay High School, Nathan Davis ■ Deering High School, Keleigh O'Neil ■ Falmouth High School, Sophie Holbrook ■ Freeport High School, Joshua Sturtevant ■ Gorham High School, Terri Bastarache ■ Gray-New Gloucester High School, Katherine Hotham ■ Greely High School, John Visentin ■ Lake Region High School, Caitlyn Paul ■ Portland High School, Joice Bongomin ■ Scarborough High School, Gabrielle Mozie ■ South Portland High School, Kim Lim, ■ Westbrook High School, Jeffrey Morse ■ Windham High School, Garrett Clemmer ■ Yarmouth High School, Patricia Borderia ■ **FRANKLIN COUNTY** ■ Jay High School, Mallory Bonnevie ■ Mount Abram High School, Serena Richard ■ Mount Blue High School, Amanda Hall ■ Rangeley High School, Emily Christensen ■ **HANCOCK COUNTY** ■ Bucksport High School, Cody Farrell ■ Deer Isle-Stonington High School, Goldie Garcia ■ Ellsworth High School, Gabrielle Huebner ■ George Stevens Academy, Joshua Sawyer ■ Mount Desert Island High School, Brooke Swanson ■ Sumner Memorial High School, Kelsey Tucker ■ **KENNEBEC COUNTY** ■ Cony High School, Jacob Lachance ■ Erskine Academy, Samuel Seekins ■ Gardiner Area High School, Kory Peckham ■ Hall-Dale High School, Christopher McArthur ■ Maranacook Community High School, Erik Ogren ■ Messalonskee High School, Cale Knox ■ Monmouth Academy, Amanda Bouchard ■ Waterville High School, Ameena Khan ■ Winslow High School, Kimberly Curtis ■ Winthrop High School, Andrew Emery ■ **KNOX COUNTY** ■ Camden Hills High School, Christopher Crippen ■ Georges Valley High School, Alec Young ■ North Haven Community School, Ann-Marie Beverage ■ Rockland District High School, Vinh Nguyen ■ Vinalhaven High School, Jennifer Guptill ■ **LINCOLN COUNTY** ■ Boothbay Region High School, Aleksandra Smith ■ Lincoln Academy, Brendan Mamma ■ Medomak Valley High School, Jonathan Dailey ■ Wiscasset High School, Johanna Verney ■ **OXFORD COUNTY** ■ Buckfield High School, Jedidiah Allen ■ Dirigo High School, Kirstin Blood ■ Fryeburg Academy, Michael Hagenow ■ Mountain Valley High School, Daniel Kiley ■ Oxford Hills High School, Mariah Kimball ■ Sacopee Valley High School, Meagan Ouellette ■ Telstar High School, Tyler Aldrich ■ **PENOBSCOT COUNTY** ■ Bangor High School, Justina Ventucci ■ Brewer High School, Eric White ■ Central High School, Brett White ■ Dexter Regional High School, Katie Eastman ■ Hampden Academy, Christina Fortin ■ Hermon High School, Caitlin Barrow ■ John Bapst High School, Mary DeLorenzo ■ Katahdin High School, Jordan Osnoe ■ Lee Academy, Ben Guido ■ Mattanawcook Academy, Sean Sibley ■ Nokomis High School, Benjamin Taylor ■ Old Town High School, Grace Gonnella ■ Orono High School, Kaylie Smith ■ Penobscot Valley High School, Jordan Faloon ■ Schenck High School, Devvan Powers ■ Stearns High School, Jessica Rogers ■ **PISCATAQUIS COUNTY** ■ Foxcroft Academy, Angel Peterson ■ Greenville High School, Saige Weeks ■ Penquis Valley High School, Ethan Herrell ■ Piscataquis Community High School, Matthew Pinkham ■ **SAGADAHOC COUNTY** ■ Morse High School, Mallory Plummer ■ Mt. Ararat High School, Rebekah Bryer ■ Richmond High School, Zachary Towne ■ **SOMERSET COUNTY** ■ Forest Hills Consolidated School, Scott Rivas ■ Lawrence High School, Miranda Liberty ■ Madison Memorial High School, Nicholas Tart ■ Maine Central Institute, Tessa Hathaway ■ Skowhegan High School, Janet Dosseva ■ Upper Kennebec Valley High School, Hannah Belanger ■ **WALDO COUNTY** ■ Belfast Area High School, Dylan Hahn ■ Islesboro Central School, Roxanne Pendleton ■ Mount View High School, Nicholas Knight ■ Searsport High School, Kali Berenyi ■ **WASHINGTON COUNTY** ■ Calais High School, Hillary Provencher ■ East Grand School, Aaron Henn ■ Jonesport-Beals High School, Whitney Norton ■ Lubec Consolidated School, Chase Fitzsimmons ■ Machias Memorial High School, Brittany Shults ■ Narraguagus High School, Jesse Blackburn ■ Shead High School, Kit Cates ■ Washington Academy, Brett Lyons ■ Woodland High School, Felicia Vincent ■ **YORK COUNTY** ■ Biddeford High School, Jaelyn McCurry ■ Bonny Eagle High School, Ashley Cram ■ Kennebunk High School, Molly Nunan ■ Marshwood High School, Amy Cole ■ Massabesic High School, Cassandra Leighton ■ Noble High School, Amarinda Keys ■ Old Orchard Beach High School, Kelsea Dixon ■ Sanford High School, Nicholas Legere ■ Thornton Academy, Kimberly Dao ■ Traip Academy, Amber Robinson ■ Wells High School, Samantha Paquette ■ York High School, Kelsey Heroux



MITCHELL
 **INSTITUTE**
SENATOR GEORGE J. MITCHELL
SCHOLARSHIP RESEARCH INSTITUTE

22 Monument Square, Suite 200
Portland, Maine 04101

Tel: 207.773.7700

Toll Free: 1.888.220.7209

Fax: 207.773.1133

info@mitchellinstitute.org

www.mitchellinstitute.org

Non-Profit Org.

U.S. Postage

PAID

Permit No. 517

Portland, ME