



Estimated Inundation

MISSISSIPPI RIVER:
Bonnet Carre flow = 100% Capacity

ATCHAFALAYA RIVER BASIN:
Simmesport flow = 760,000 cfs
Assuming Morganza flow = 50% Capacity

Pre-Decisional Document

DISCLAIMER:
This map has been completed using the best information available and is believed to be accurate; however, its preparation required many assumptions. Actual conditions during a flood event may vary from those assumed, so the accuracy cannot be guaranteed. The limits of flooding shown should only be used as a guideline for emergency planning and response action. Actual areas inundated will depend on specific flooding conditions and may differ from the areas shown on the map.

Information on this map is intended to permit state and local agencies to plan emergency evacuation and flood response actions.

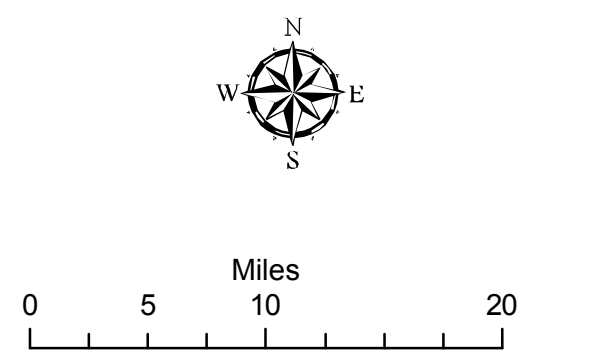
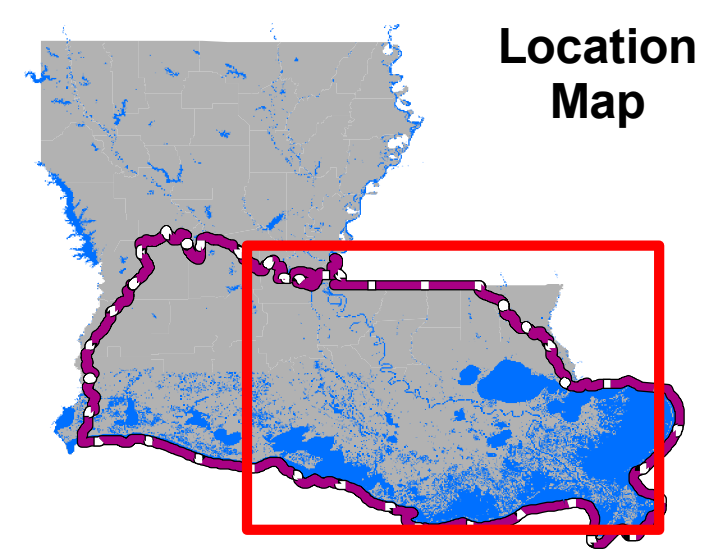
Estimated Flood Depth

- 0 ft - 5 ft
- 5 ft - 10 ft
- 10 ft - 15 ft
- 15 ft - 20 ft
- 20 ft - 25 ft
- 25 ft - 30 ft
- 30 ft - 40 ft

Geographic Features

- Selected Channel Floodgate
- Flood Control Systems
- xxAnalysis Boundary
- New Orleans District

NOTE: Future revisions of this map are expected to occur for changed forecasts.



Estimated Inundation Spring 2011 Flood

Date: 06 May 2011 - Version 1

