

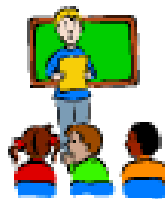
ABERDEEN SCHOOL DISTRICT 6-1

DISTRICT REPORT CARD

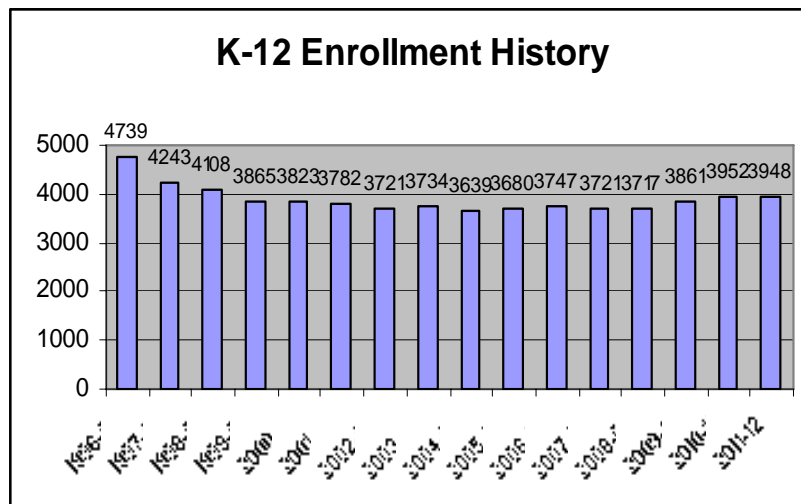
Aberdeen, South Dakota

Published Fall 2005

Updated Fall 2011



DEMOGRAPHICS OF OUR SCHOOL DISTRICT



Socio-Economic Status of Students

% of Students
Eligible for Free and
Reduced Lunches

	2005-06	2006-07	2007-08	2008-09	2009-10	2010-11
Elementary	31.5%	32.1%	34.9%	37.7%	41.4%	39.3%
Middle School	25.7%	27.4%	29%	26.7%	29.4%	32.6%
High School	17.0%	17.9%	19%	19.4%	22.8%	25.0%

2011-12

STUDENTS BY BUILDINGS as of September 30, 2011

410	C.C. Lee Elementary
389	Lincoln Elementary
378	May Overby
335	Simmons Elementary
390	O.M. Tiffany
408	Holgate Middle School
456	Simmons Middle School
1182	Central High School
3948	Total

ATTENDANCE CENTER	1999-00	2000-01	2001-02	2002-03	2003-04	2004-05	2005-06	2006-07	2007-08	2008-09	2009-10	2010-11
Elementary	97%	96%	97%	97%	97%	96%	96%	97%	97%	97%	97%	97%
Middle School	96%	95%	94%	94%	95%	95%	96%	96%	94%	94%	96%	96%
High School	91%	93%	94%	90%	90%	90%	92%	94%	93%	93%	94%	93%

ETHNIC MAKE-UP

ETHNICITY	2007-08	2008-09	2009-2010	2010-2011	2011-12
American Indian	252	255	272	274	280
Asian or Pacific Islander	35	44	50	58	63
Hispanic	49	44	45	57	61
Black, Not Hispanic Origin	54	53	57	62	60
White, Not Hispanic Origin	3278	3321	3437	3493	3449
Two or more races	N/A	NA	N/A	10	35
Total	3668	3717	3861	3954	3948

SPECIAL EDUCATION ENROLLMENT

Students Served in Special Education: 2006/2007/2008/2009/2010

DISABILITY CATEGORY	NUMBER OF STUDENTS						PERCENTAGE OF TOTAL STUDENTS*					
YEAR	'06	'07	'08	'09	'10	'11	'06	'07	'08	'09	'10	'11
Deafness-Blind	0	0	0	1	1	1	0%	0%	0%	0%	0%	0%
Emotional Disability	44	49	44	51	40	41	1.2%	1.3%	1.2%	2%	1.1%	1.1%
Cognitive Disability	71	65	70	62	52	46	1.9%	1.8%	1.9%	1.4%	1.4%	1.2%
Hearing Impaired	2	2	4	2	3	3	0%	0%	0%	0%	0%	.1%
Learning Disabled	143	161	164	172	176	165	3.8%	4.3%	4.4%	4.5%	4.5%	4.2%
Multiple Disability	10	11	9	13	18	23	.3%	.3%	.2%	.4%	.5%	.6%
Orthopedic Impairment	4	2	2	5	5	5	0%	0%	0%	.2%	.2%	.2%
Visual Loss	1	3	2	3	3	2	0%	0%	0%	.1%	0%	.1%
Deaf	7	4	4	3	5	2	.2%	.1%	.1%	.1%	.2%	.1%
Speech/Language	176	149	137	148	158	163	4.7%	4%	3.7%	3.9%	4.1%	4.2%
Other Health Impairments	97	98	104	107	79	78	2.6%	2.6%	2.8%	2.8%	2.1%	.2%
Autism	33	34	38	40	39	34	.9%	1.0%	1.0%	1.1%	1.0%	.9%
Traumatic Brain Injury	2	2	2	2	4	3	0%	0%	0%	0%	.1%	.1%
Developmental Delay	54	52	60	60	53	53	1.4%	1.4%	1.6%	1.6%	1.4%	.1%
Total	644	632	640	669	636	619	17.2%	17%	17.2%	17%	16.2%	15.6%

Percentage is rounded to the nearest tenth.

*The percentage sums do not add up to the total percentage due to rounding errors.

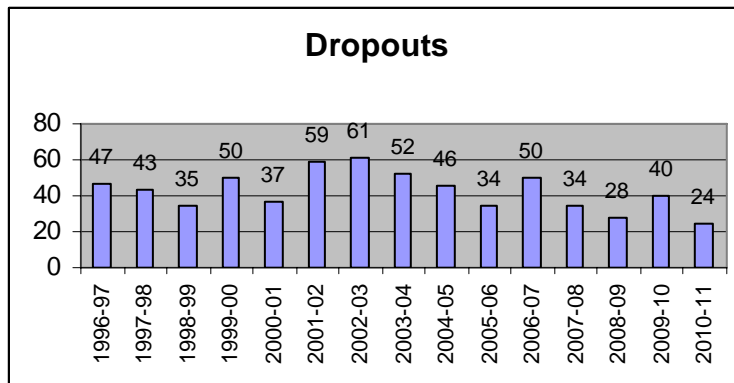
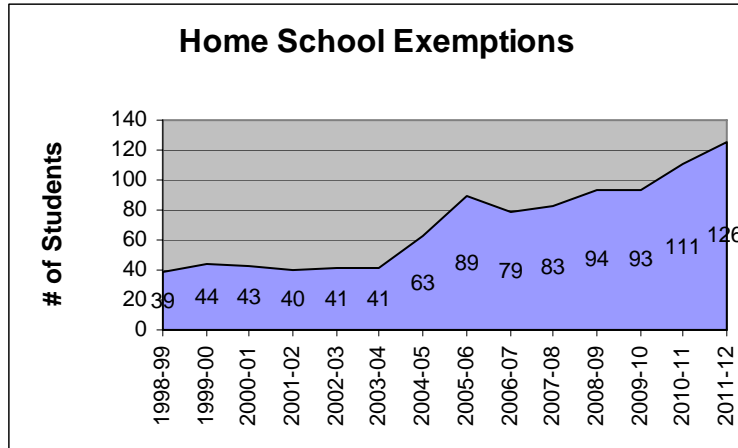
TOTALS FOR SPECIAL EDUCATION

	2002	2003	2004	2005	2006	2007	2008	2009	2010	2011
Number Of Special Education Students	540	610	606	633	644	632	640	669	636	619
Percent of Total Population	14.5%	16.5%	16.5%	17.4%	17.2%	17%	17.2%	17%	16.2%	15.6%
All K-12 Students*	3721	3693	3642	3649	3749	3722	3717	3885	3921	3952

*As of December 2011

OPEN ENROLLMENT

	2002-03	2003-04	2004-05	2005-06	2006-07	2007-08	2008-09	2009-10	2010-11	2011-12
Coming to Aberdeen (In)	26	39	26	23	22	24	27	29	24	12
Leaving Aberdeen (Out)	39	34	27	20	26	23	23	34	6	34
Difference	-13	5	-1	3	-4	1	4	-5	18	-22



LIMITED ENGLISH PROFICIENT 2010-2011

Spanish	Amharic	Samoan	Chinese, Zhongwer	Lakota	Hmong	Russian	Tagalog	Portuguese	Mandarin	Vietnamese
13	1	1	3	2	4	3	1	1	2	1

SCHOOL ALERT STATUS
2010-2011

SCHOOL	STATUS
Central High School	School Improvement
Holgate Middle School	Meets Qualifications
Simmons Middle School	Meets Qualifications
C.C. Lee Elementary School	Meets Qualifications
O.M. Tiffany Elementary School	Meets Qualifications
Lincoln Elementary School	Meets Qualifications
May Overby Elementary School	Meets Qualifications
Simmons Elementary	Meets Qualifications

Aberdeen School District 6-1

Mission Statement



Vision

To provide all students with the knowledge and skills necessary to reach their potential in a global community through high expectations of academic achievement, diverse educational opportunities, and community involvement in a safe environment.

Beliefs

- All students can succeed when given the opportunity to learn through appropriate instruction, academic experiences and involvement in activities.
- All students benefit from a safe and nurturing learning environment.
- All students benefit from positive role models.
- Student progress is achieved by holding all students, parents and the school district accountable.
- Students' success is enhanced with the school, parents and community work together as partners.

Goals

- To meet AYP in all schools in the areas of math and reading.
- Provide a safe and supportive learning environment for all students and staff.
- Provide equitable access to current and developing technology tools for all students and teachers.
- Ensure a positive climate/culture that promotes collegiality among/between staff, parents, and students.
- Promote active partnerships within the community.

2011-2012 SUPERINTENDENT GOALS

- **Safety**
 - **Bullying**
 - **Review student drop-off points at elementary school**
- **Achievement**
 - **Implement ICU K-12**
 - **Begin transition to Danielson's teacher standards/evaluation model**
- **Climate/Culture**
 - **Monitor climate issues within buildings**
- **School/Community Involvement**
 - **Form partnerships with NBP, MFG, and other growing business**

CENTRAL HIGH SCHOOL SENIOR ACHIEVEMENT ON THE ACT TEST

YEAR	CHS AVERAGE SCORE	STATE AVERAGE SCORE	NATIONAL AVERAGE SCORE
2010-11	22.0	21.8	21.1
2009-10	21.1	21.8	21.0
2008-09	22.1	22.0	21.1
2007-08	22.1	22.0	21.1
2006-07	22.0	21.9	21.2
2005-06	21.5	21.8	21.1
2004-05	21.2	21.5	20.9
2003-04	21.2	21.5	20.9
2002-03	20.7	21.4	20.8
2001-02	20.8	21.4	20.8
2000-01	21.2	21.4	21.0
1999-00	20.7	21.5	21.0
1998-99	20.8	21.2	21.0
1997-98	21.5	21.4	21.0

CENTRAL HIGH SCHOOL ACT TEST TAKING HISTORY

YEAR	ACT NUMBER	GRADUATE NUMBER	PERCENTAGE
2010-11	188	262	71.8%
2009-10	206	265	77.7%
2008-09	176	241	73%
2007-08	186	245	75.9%
2006-07	190	256	74.2%
2005-06	172	244	70.5%
2004-05	189	250	75.6%
2003-04	202	277	72.9%
2002-03	178	254	70.1%
2001-02	182	286	63.6%
2000-01	196	287	68.3%
1999-00	218	329	66.3%
1998-99	182	301	60.5%

CENTRAL HIGH SCHOOL SAT HISTORY

CLASS OF	SAT NUMBER	VERBAL/CRITICAL READING- CHS	NAT'L AVERAGE	MATH CHS	NAT'L AVERAGE	WRITING CHS	NAT'L AVERAGE
2011	7	570	497	614	514	496	499
2010	3	610	501	617	516	563	492
2009	8	594	501	595	515	588	493
2008	14	617	502	618	515	589	494
2007	11	600	502	603	515	538	494
2006	11	597	503	631	518	597	497
2005	14	575	508	579	520	N/A	N/A
2004	13	573	508	585	518	N/A	N/A
2003	17	558	N/A	532	N/A	N/A	N/A
2002	12	542	N/A	558	N/A	N/A	N/A
2001	6	542	N/A	562	N/A	N/A	N/A
2000	7	596	N/A	509	N/A	N/A	N/A
1999	9	601	N/A	573	N/A	N/A	N/A

PSAT/NMSQT

	2000		2001		2002		2003		2004		2005	
	Local Mean	Nat'l Mean	Local Mean	Nat'l Mean	Local Mean	Nat'l Mean	Local Mean	Nat'l Mean	Local Mean	Nat'l Mean	Local Mean	Nat'l Mean
Verbal	50.1	48.4	48.6	48.5	50.4	48.1	48.4	47.9	49.5	46.9	50.6	47.6
Math	49.3	49.3	50.2	49.1	51.7	49.3	49.2	48	51.5	48.8	53.8	49.3
Writing	49.8	48.7	50.5	49.1	52.1	48.9	50.2	50.2	51.8	50.4	51.8	49.4
Comp	149.2	146.4	149.4	146.7	154.2	146.4	147.8	146.7	152.9	146	156.2	146.3
	N=90		N=82		N=83		N=94		N=97		N=96	

	2006		2007		2008		2009		2010		2011	
	Local Mean	Nat'l Mean	Local Mean	Nat'l Mean	Local Mean	Nat'l Mean	Local Mean	Nat'l Mean	Local Mean	Nat'l Mean	Local Mean	Nat'l Mean
Verbal	51.5	47.5	49.8	49.6	46.9	46.8	50.0	47.0				
Math	51.7	48.5	51.7	51.4	51.2	48.9	51.6	48.3				
Writing	49.2	45.7	49.6	49.5	46.5	45.9	48.0	45.9				
Comp	152.4	141.7	151.1	140.9	144.6	141.6	149.5	141.1				
	N=98		N=96		N=106		N=89					

PLAN

	2000		2001		2002		2003		2004		2005	
	Local Mean	Nat'l Mean	Local Mean	Nat'l Mean	Local Mean	Nat'l Mean	Local Mean	Nat'l Mean	Local Mean	Nat'l Mean	Local Mean	Nat'l Mean
English	21.1	16.1	21.6	16.1	20.6	16.1	20.8	16.1	20	16.1	20.1	16.1
Math	21.1	16.3	21.9	16.3	20.1	16.3	21	16.3	20.2	16.3	21.3	16.3
Reading	21.7	15.8	21.9	15.8	19.7	15.8	20.5	15.8	20.6	15.8	20.2	15.8
Scientific Reason	21	17.4	21.6	17.4	21.2	17.4	20.9	17.4	20.9	17.4	21.2	17.4
Comp Sel Index	21.3	16.5	22	16.5	20.6	16.5	20.9	16.5	20.5	16.5	20.8	16.5
	N=32		N=34		N=50		N=43		N=70		N=56	

	2006		2007		2008		2009		2010		2011	
	Local Mean	Nat'l Mean	Local Mean	Nat'l Mean	Local Mean	Nat'l Mean	Local Mean	Nat'l Mean	Local Mean	Nat'l Mean	Local Mean	Nat'l Mean
English	21.2	16.9	19.1	16.9	19.9	16.9	20.1	19.6				
Math	21.9	17.4	20.6	17.4	20.4	17.4	21.3	17.4				
Reading	22.5	16.9	19.3	16.9	19.4	16.9	19.8	16.9				
Scientific Reason	22.5	18.2	20.6	18.2	21.1	17.5	21.1	18.2				
Comp Sel Index	22.2	17.5	20	17.5	20.3	17.5	20.7	17.5				
	N=53		N=70		N=80		N=80		N=		N=	

SEMIFINALISTS IN THE COMPETITION FOR MERIT SCHOLARSHIP AWARDS National Merit Scholarship Program

Year Tested	Number Tested	CHS Mean	National Mean	CHS High	SD High	Semi finalists
2011	85					
2010	79	154.5	141.7	216	231	3
2009	89	149.5	141.1	225	237	1
2008	106	144.6	141.6	198	229	0
2007	96	151.1	140.9	214	231	2
2006	86	152.4	141.7	207	240	2
2005	96	156.2	146.3	218	224	3
2004	97	152.9	146.0	217	228	2
2003	95	147.8	146.7	198	233	0
2002	84	154.2	146.4	206	238	1
2001	82	149.4	146.7	194	237	0
2000	90	149.2	146.4	213	240	1
1999	89	146.4	146.7	193	235	0
1998	91	150.3	147.2	197	238	0
1997	102	150.4	147.4	218	231	1
1996	101	145.4	146.2	207	236	1
1995	87	154.8	145.5	217	232	2
1994	97	147.1	146.4	222	232	2
1993	78	140.0	126.4	218	218	2

1992	99	129.1	126.7	192	226	2
1991	95	139.8	125.8	216	221	3
1990	87	134.0	124.7	189	219	1
1989	97	130.8	127.1	191	214	1
1988	86	141.1	126.0	206		4
1987	83	136.9	127.0	186		0
1986	76	139.3	127.0	198		2
1985	73	136.2	127.0	185		0

New scores began in 1994.

**ABERDEEN CENTRAL HIGH SCHOOL'S COLLEGE
FRESHMAN GPA AT SOUTH DAKOTA REGENTAL
INSTITUTIONS**

GRADE	CHS AVERAGE GPA	SD GRADUATE GPA
Class of 2010	3.07	3.02
Class of 2009	3.07	2.84
Class of 2008	2.83	2.80
Class of 2007	3.13	2.85
Class of 2006	2.69	2.82
Class of 2005	2.69	2.82
Class of 2004	2.82	2.79
Class of 2003	2.67	2.73
Class of 2002	2.60	2.76
Class of 2001	2.91	2.78
Class of 2000	2.60	2.74
Class of 1999	2.67	2.74

**ABERDEEN CENTRAL HIGH SCHOOL GRADUATES NEEDING
REMEDIAL HELP IN MATHEMATICS AT SD REGENTAL INSTITUTIONS**

GRADE	CHS AVERAGE PERCENT	SD GRADUATE PERCENT
Class of 2010	35.64	26.45
Class of 2009	33.33	26.32
Class of 2008	27.47	23.79
Class of 2007	27.03	21.83
Class of 2006	32.22	24.35
Class of 2005	37.08	25.56
Class of 2004	34.44	26.80
Class of 2003	44.30	29.03
Class of 2002	50.75	28.50
Class of 2001	33.82	28.69
Class of 2000	47.25	28.88
Class of 1999	13.68	13.46

**ABERDEEN CENTRAL HIGH SCHOOL GRADUATES NEEDING
REMEDIAL HELP IN ENGLISH AT SD REGENTAL INSTITUTIONS**

GRADE	CHS AVERAGE PERCENT	SD GRADUATE PERCENT
Class of 2010	16.83	14.22
Class of 2009	21.67	14.83
Class of 2008	13.19	14.25
Class of 2007	10.81	9.06
Class of 2006	14.44	12.83
Class of 2005	16.85	13.97
Class of 2004	12.22	13.78
Class of 2003	17.72	14.76
Class of 2002	20.90	16.19
Class of 2001	19.21	14.21
Class of 2000	23.08	13.51
Class of 1999	24.21	8.25

Conclusions: The huge jump in the percentage of students beginning with the Class of 2000 taking remedial classes is due to a change in the way our public universities assign students to remedial classes. Previously, students were assigned based upon GPAs and placement testing. Beginning with the Class of 2000, placements was based on ACT English and Math scores. The Board of Regents believes this new placement system increases student success.

ABERDEEN CENTRAL HIGH SCHOOL COURSEWORK OFFERED

SUBJECT AREA	GRADE
AP English, Math, History	10 to 12
AP Science	10 to 12
Art	9 to 12
Business Education	9 to 12
Computer Studies	9 to 12
Driver Education	8 to 12
Dual Enrollment with Northern State University or Presentation College	12
English/Language Arts	9 to 12
Family & Consumer Science	9 to 12
Foreign Language (French 1 – 2)	9 to 12
Foreign Language (Spanish 1 – 4)	9 to 12
Gifted Education	9 to 12
Health Education	9 to 12
Hub Area Technical School classes	10 to 12
Instrumental Music	9 to 12
Mathematics	9 to 12
Physical Education	9 to 12
Science	9 to 12
Social Studies	9 to 12
Special Education	9 to 12
Theatre	9 to 12
Vocal Music	9 to 12

ABERDEEN CENTRAL HIGH SCHOOL AP TESTING RESULTS

Class	Year	Enrolled	Tested	5	4	3	2	1	Average
Biology	2010-11	35	8	4	1	1	2	0	3.875
Calculus AB	2010-11	25	13	1	8	3	0	1	3.615
Calculus BC	2010-11	25	6	3	1	2	0	0	4.167
Chemistry	2010-11	14	6	3	1	2	0	0	4.167
English Lang/ Comp	2010-11	59	55	2	9	22	18	4	2.764
English Lit/Comp	2010-11	24	24	7	7	5	5	0	3.667
European History	2010-11	15	12	1	3	7	0	1	3.250
U.S. Gov't & Politics	2010-11	6	2	1	0	1	0	0	4.000
MacroEconomics	2010-11	20	3	1	1	1	0	0	4.000
MicroEconomics	2010-11	-	-	-	-	-	-	-	-
Physics B	2010-11	2	2	1	0	1	0	0	4.000
Physics C: Electricity and Magnetism	2010-11	1	1	0	0	0	0	0	5.000
Physics C: Mechanics	2010-11	1	1	0	0	0	0	0	5.000
Psychology	2010-11	9	9	1	4	3	0	1	3.444
Statistics	2010-11	28	15	1	1	7	4	2	2.667
U.S. History	2010-11	59	53	3	5	18	19	8	2.381
Biology	2009-10	4	4	4	0	0	0	0	5.000
Calculus AB	2009-10	19	16	3	6	2	0	5	3.125
Calculus BC	2009-10	2	2	1	1	0	0	0	4.500
Chemistry	2009-10	13	11	4	4	1	1	1	3.818
English Lang/ Comp	2009-10	51	41	3	4	15	16	3	2.707
English Lit/Comp	2009-10	0	-	-	-	-	-	-	-
European History	2009-10	24	18	3	4	5	5	1	3.167
U.S. Gov't & Politics	2009-10	4	4	1	0	2	1	0	3.250
MacroEconomics	2009-10	4	4	1	0	1	1	1	2.500
MicroEconomics	2009-10	3	3	1	1	1	0	0	4.000
Physics B	2009-10	0	-	-	-	-	-	-	-
Psychology	2009-10	1	1	1	0	0	0	0	5.000
Statistics	2009-10	14	8	0	2	5	1	0	3.125
U.S. History	2009-10	51	42	1	3	12	21	5	2.381
US History	2008-09	54	43	0	3	10	23	7	2.209
Biology	2008-09	17	13	6	2	2	2	1	3.769
MacroEconomics	2008-09	2	2	2	0	0	0	0	5.000
MicroEconomics	2008-09	0	-	-	-	-	-	-	-
Eng Lang/Comp	2008-09	54	39	1	6	14	17	1	2.718
Eng Lit/Comp	2008-09	18	17	6	4	7	0	0	3.941
European History	2008-09	0	-	-	-	-	-	-	-
Calculus AB	2008-09	22	14	2	7	3	2	0	3.643
Calculus BC	2008-09	7	7	4	1	2	0	0	4.286
Chemistry	2008-09	16	11	4	1	4	1	1	3.545
US Govt & Politics	2008-09	4	4	1	0	3	0	0	3.500
Psychology	2008-09	2	2	1	0	0	0	1	3.000
Statistics	2008-09	19	10	0	1	3	4	2	2.300
Physics B	2008-09	1	1	0	0	0	1	0	2.000
US History	2007-08	56	38	0	9	9	8	12	2.395
Biology	2007-08	25	14	5	2	3	3	1	3.500
MacroEconomics	2007-08	4	3	0	1	1	1	0	3.000
MicroEconomics	2007-08	0	-	-	-	-	-	-	-

Eng Lang/Comp	2007-08	56	34	2	2	14	15	1	2.676
Eng Lit/Comp	2007-08	9	6	0	1	3	2	0	2.833
European History	2007-08	24	15	4	4	6	1	0	3.733
Calculus AB	2007-08	24	18	4	9	4	1	0	3.889
Calculus BC	2007-08	2	2	1	1	0	0	0	4.500
Chemistry	2007-08	16	10	2	5	2	0	1	3.700
US Govt & Politics	2007-08	0	-	-	-	-	-	-	-
Psychology	2007-08	2	2	0	1	0	1	0	3.000
Statistics	2007-08	16	7	0	1	0	4	2	2.000
US History	2006-07	58	40	1	4	14	17	4	2.525
Biology	2006-07	21	18	9	5	2	2	0	4.167
Macroeconomics	2006-07	4	4	1	2	1	0	0	4.000
MicroEconomics	2006-07	3	3	3	0	0	0	0	5.000
Eng Lang/Comp	2006-07	58	41	2	4	14	20	1	2.659
Eng Lit/Comp	2006-07	18	18	2	6	7	3	0	3.389
Calculus AB	2006-07	17	16	8	6	2	0	0	4.375
Calculus BC	2006-07	1	1	1	0	0	0	0	5.000
Chemistry	2006-07	12	11	6	4	1	0	0	4.455
US Govt & Politics	2006-07	1	1	0	0	0	1	0	2.000
Psychology	2006-07	1	1	1	0	0	0	0	5.000
Statistics	2006-07	46	5	0	1	0	1	3	1.800
US History	2005-06	31	22	1	4	9	6	2	2.818
Biology	2005-06	22	18	8	4	2	4	0	3.889
Macroeconomics	2005-06	0	3	2	1	0	0	0	4.667
Eng Lang/Comp	2005-06	31	26	0	2	11	12	1	2.538
Eng Lit/Comp	2005-06	13	13	2	1	5	4	1	2.923
European History	2005-06	18	12	5	1	3	3	0	3.667
Calculus AB	2005-06	14	13	5	3	4	1	0	3.923
US History	2004-05	39	23	0	5	3	7	8	2.217
Biology	2004-05	20	11	3	4	3	1	0	3.818
Chemistry	2004-05	12	5	4	1	0	0	0	4.800
Eng Lang/Comp(10)	2004-05	39	25	0	2	10	10	3	2.440
Eng Lit/Comp (12)	2004-05	24	22	3	5	10	4	0	3.318
European History	2004-05	19	16	2	5	7	1	1	3.375
Calculus AB	2003-05	17	7	3	1	3	0	0	4.000
Physics B	2004-05	6	2	0	0	1	1	0	2.500
US History	2003-04	31	19	2	6	4	4	3	3.000
Biology	2003-04	16	16	3	3	8	2	0	3.438
Chemistry	2003-04	11	7	2	0	5	0	0	3.571
Macroeconomics	2003-04	1	1	0	1	0	0	0	4.000
Eng Lang/Comp(10)	2003-04	31	25	2	3	8	10	2	2.720
Eng Lit/Comp (12)	2003-04	20	20	4	1	8	5	2	3.000
Calculus AB	2003-04	42	34	6	8	11	7	2	3.265
Physics B	2003-04	9	9	0	1	3	1	4	2.111
Statistics	2003-04	1	1	1	0	0	0	0	5.000
US History	2002-03	44	33	0	7	8	15	3	2.576
Biology	2002-03	27	23	9	7	3	2	2	3.826
Eng Lang/Comp (10)	2002-03	44	40	1	1	16	20	2	2.475
Eng Lit/Comp (12)	2002-03	29	24	0	7	8	9	0	2.917
Calculus AB	2002-03	16	12	0	5	4	2	1	3.083
Physics B	2002-03	2	2	0	1	1	0	0	3.500
Psychology	2002-03	1	1	0	1	0	0	0	4.000

**ABERDEEN CENTRAL HIGH SCHOOL
SCHOLARSHIP AWARDS**

YEAR	NUMBER	AMOUNT
Class of 2011	282	\$2,216,240
Class of 2010	244	\$2,039,121
Class of 2009	277	\$2,205,327
Class of 2008	282	\$1,892,046
Class of 2007	280	\$1,860,637
Class of 2006	241	\$1,209,943
Class of 2005	223	\$1,654,385
Class of 2004	200	\$1,379,893
Class of 2003	204	\$1,035,675
Class of 2002	176	\$1,050,837
Class of 2001	152	\$1,010,172
Class of 2000	159	\$ 823,667
Class of 1999	140	\$ 608,500
Class of 1998	137	\$ 808,897
Class of 1997	143	\$ 446,736

PLANS OF CENTRAL HIGH SCHOOL GRADUATES

YEAR	% Pursuing non-Military, post-secondary studies	% Entering Military	% Directly to Workforce	% Other	% Undecided	% Unreported
Class of 2011	70%	4%	7%			19%
Class of 2010	69%	3%				28%
Class of 2009	75%	2%				23%
Class of 2008	70%	2%	11%	8%	9%	
Class of 2007	75.6%	3.5%	7%	3.9%	10%	
Class of 2006	73%	2.5%	8%	N/A	16.5%	
Class of 2005	78.2%	3.8%	4.2%	N/A	13.8%	
Class of 2004	79%	2.5%	7.2%	N/A	11.3%	

**PLANS OF ABERDEEN CENTRAL HIGH SCHOOL'S
2011 GRADUATES**

PLACEMENT	NUMBER OF STUDENTS
Alexandria Technical & Community College	1
Anoka-Ramsey Community College	1
Anoka Technical College	1
Augustana College	3
Bismarck State College	1
Black Hills Beauty College	2
Black Hills State University	1
Boise State University	1
Brigham Young University	2
Concordia College - Moorhead	1

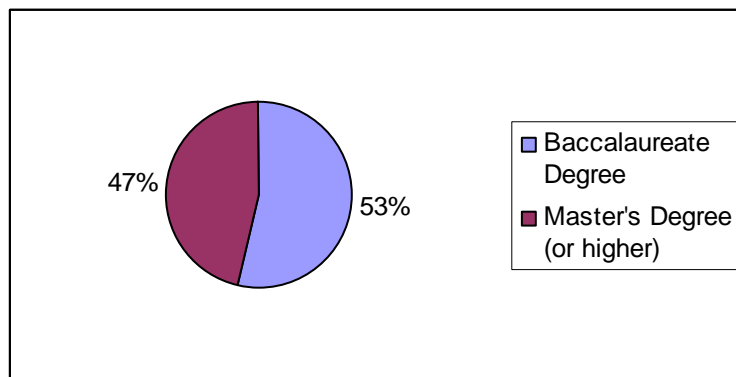
Dordt College	1
Full Said University	1
Lake Area Technical Institute	10
Macalester College	1
McNally Smith College of Music	1
Minnesota State University - Moorhead	3
Mitchell Technical Institute	8
Morningside College	1
North Central College	1
North Dakota State College of Science	3
North Dakota State University	3
Northern State University	55
Northwestern College	1
Presentation College	12
Riverside Community College	1
South Dakota School of Mines & Technology	1
South Dakota State University	22
Southeast Technical Institute	3
Southwest Minnesota State University	1
Southwestern Assemblies of God University	1
St. Cloud State University	2
Stewart's School of Hairstyling	1
United Tribes Technical School	1
University of Mary	2
University of Michigan	1
University of Minnesota-Duluth	1
University of Minnesota-Morris	2
University of Minnesota-Twin Cities	5
University of Nebraska-Lincoln	3
University of North Dakota	5
University of North Texas	1
University of Sioux Falls	1
University of South Dakota	10
University of St. Thomas	1
Valley City State University	1
Western Iowa Tech Community College	1
WyoTech Institute	2
Job	17
Military	11
Unreported	51

FACULTY OF OUR SCHOOL DISTRICT

FACULTY LEVEL OF EDUCATION

FACULTY LEVEL OF EDUCATION	2007-08	2008-09	2009-10	2010-11	2011-12
Baccalaureate Degree	55	60	54	57	56
Baccalaureate Degree + 15 Hours	81	71	75	76	70
Baccalaureate Degree + 45 Hours	36	31	27	27	30
Master's Degree	35	51	57	53	51
Master's Degree + 15 Hours	23	22	26	26	24
Master's Degree + 30 Hours	15	16	14	16	22
Master's Degree + 45 Hours	13	9	14	14	12
Master's Degree + 60 Hours	21	22	22	26	24
PhD	4	4	5	5	5
Total	283	286	294	300	294

HIGHEST TERMINAL DEGREE	2007-08	2008-09	2009-10	2010-11	2011-12
Baccalaureate Degree	172	162	156	160	156
Master's Degree (or higher)	111	124	138	140	138
Total	283	286	294	300	294



FACULTY EXPERIENCE

NUMBER OF YEARS	2005-06	2006-07	2007-08	2008-09	2009-10	2010-11
1 – 5 Years	67	131	79	66	59	67
6 – 10 Years	26	30	38	42	54	54
11 – 15 Years	38	29	33	35	27	26
16 – 20 Years	40	42	39	36	37	37
21 – 25 Years	40	22	32	45	36	34
26 – 30 Years	37	16	38	35	40	37
31 – 35 Years	16	7	18	23	25	26
36 – 40 Years	6	4	6	4	10	13
40 – 50 Years	0	0	0	0	4	2

FINANCES OF OUR SCHOOL DISTRICT

Sources of Revenues

Revenues: General Operating Fund

There are four sources for revenues for the general operating fund:

<u>Local</u>	<u>County</u>	<u>State</u>	<u>Federal</u>
Property Taxes	Fine	State Aid	Title I – Reading
Student Tuition and Fees		Public Land Revenue	Title II – Class Size Reduction
Interest		Bank Franchise Fees	Title VII – Indian Education
Ticket Sales		State Grants	Other Federal Grants
Facility Rentals			
Donations			
Local Grants			
Medicaid Revenues			
Gross Receipt Taxes			

Receipts

General Operating Fund

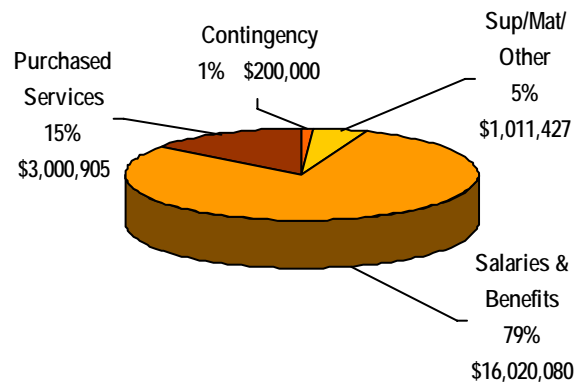
Comparisons of Receipts

Year	Local	County	State	Federal	Total
1997-98	\$10,122,314	\$215,378	\$6,323,359	\$745,822	\$17,406,873
1998-99	10,139,500	225,649	6,239,900	682,913	17,287,962
1999-00	10,266,302	242,319	5,742,794	740,793	16,992,208
2000-01	9,637,623	254,048	6,113,660	763,019	16,768,350
2001-02	9,156,545	257,204	6,716,903	897,677	17,028,329
2002-03	9,611,372	267,459	6,410,938	1,075,517	17,365,286
2003-04	9,531,264	293,070	7,067,845	1,049,955	17,942,134
2004-05	9,234,646	284,473	7,452,209	1,234,857	18,206,185

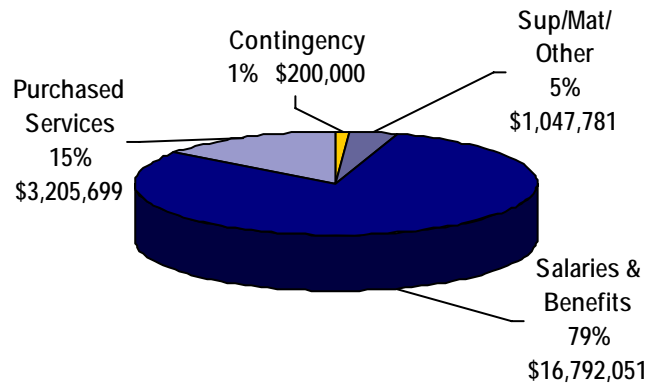
2005-06	9,389,961	291,187	7,506,118	1,271,073	18,458,339
2006-07	9,578,493	366,520	8,180,536	1,259,486	19,385,035
2007-08	9,391,790	354,336	9,398,089	1,291,103	20,435,318
2008-09	9,494,119	380,557	9,370,658	1,717,750	20,963,084
2009-10	9,642,256	358,772	9,594,889	2,098,974	21,694,891
2010-11	8,914,279	335,329	9,438,337	2,714,916	\$22,402,861

General Fund Expenditure Budgets by Object

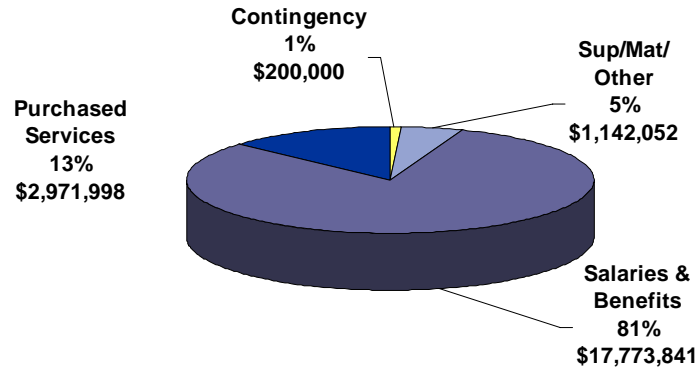
2007-08



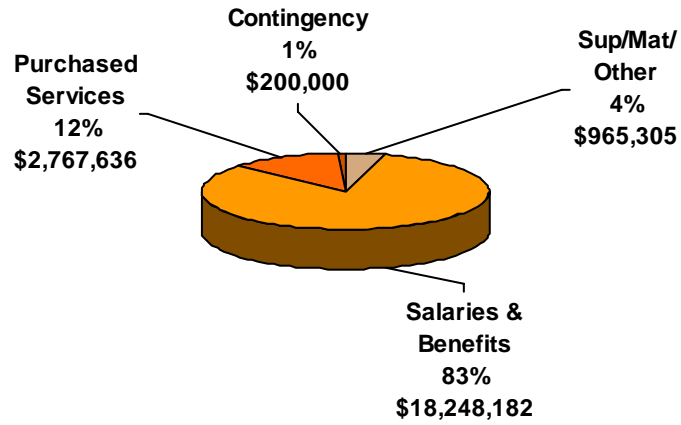
2008-09



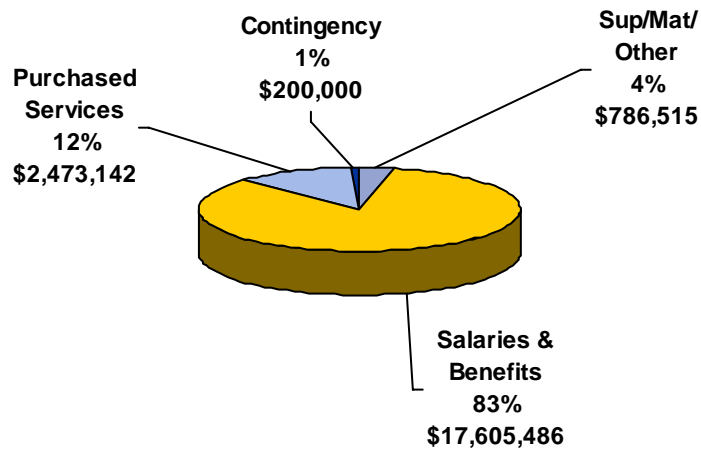
2009-10



2010-11



2011-12



General Fund Per Pupil Costs

Year	District Per Pupil Cost	State Finance Formula Rate Per Pupil
1997-98	\$4,013	\$3,440.45
1998-99	4,141	3,540.91
1999-00	4,467	3,604.65
2000-01	4,630	3,665.93
2001-02	4,489	3,775.91
2002-03	4,518	3,889.19
2003-04	4,608	3,967.88
2004-05	4,861	4,086.56
2005-06	5,006	4,237.72
2006-07	5,055	4,364.85
2007-08	5,441	4,528.80
2008-09	5,657	4,664.66
2009-10	5,497	4,804.60
2010-11	4,431	4,804.60

Ending Fund Balances for Major Funds

Year	General	Capital Outlay	Special Education	Food Service
1997-98	\$5,723,630	\$2,176,063	\$695,419	\$215,079
1998-99	5,585,265	2,314,199	720,792	285,327
1999-00	4,803,396	2,722,271	944,660	308,337
2000-01	3,409,996	189,412	622,766	257,578
2001-02	2,990,653	541,650	768,585	157,622
2002-03	3,159,862	1,256,105	1,025,852	83,970
2003-04	3,599,692	1,159,936	791,255	104,623
2004-05	3,698,955	856,855	864,820	83,444
2005-06	3,776,249	612,962	852,589	177,826
2006-07	4,148,255	1,385,074	827,482	305,375
2007-08	4,275,721	2,524,381	716,124	386,020
2008-09	4,091,871	1,208,706	660,620	644,624
2009-10	4,489,277	1,363,189	704,072	687,962
2010-11	5,315,456	1,427,419	508,291	719,675

Solvency Ratio

The District's solvency ratio is determined by dividing the ending fund balance in the general fund by the total expenditures. A healthy financial solvency ratio is between 15-20%.

Year	Solvency Ratio
1997-98	33.05%
1998-99	31.70%
1999-00	27.02%
2000-01	18.79%
2001-02	17.14%
2002-03	18.22%
2003-04	20.57%
2004-05	20.43%
2005-06	20.54%
2006-07	21.82%
2007-08	21.05%
2008-09	19.35%
2009-10	21.08%
2010-11	

AUXILIARY SERVICES OF OUR SCHOOL DISTRICT

	Central High School	Holgate Middle School	Simmons Middle School	District Service Center
Year Built	2004	1971	2008	1959
Recent Improvements	built athletic complex Grandstand replacement in process	science lab renovation boiler room piping server room locker/shower room upgrades security cameras HVAC/ Electrical upgrades	Kitchen & Gym remodel, 1966 Addition Remodel	Remodeled for District Service Center 2008
Annual Building Costs				
Building Square Footage	250,683	99,400	86,401	16,387
Number of Students in October 2010	1,194	409	446	
Average Building Operational Cost Per Square Foot	84¢	84¢	84¢	

Building Operational Cost Per Student					
Square Footage Per Student					
Computers					
Student/Computer Ratio					
	C. C. Lee Elementary School	Lincoln Elementary School	May Overby Elementary School	O. M. Tiffany Elementary School	Simmons Elementary School
Year Built	1973	1956/1977	1958	1941	1955
Recent Improvements	office/music room addition server room gym addition/old gym renovation (2007)	roof replacement administration area renovations remodel 1956 building/special ed area	media center/classroom addition kitchen/special services remodel landscaping, playground improvements roof replacement new windows administrative area remodel 2009 classroom addition	kindergarten remodel windows east elevation annex playground dirt work and re-seed parking lot, curb and gutter server room classroom addition completed in 2010	administrative office remodel kindergarten drop off completion Media Center/Classrooms 1989 Classrooms and gym addition & remodeling completed in 2011
Annual Building Costs					
Building Square Footage	52,158	56,283	46,659	46,362	56,349
Average Building Operational Cost Per Square Foot	84¢	84¢	84¢	84¢	84¢
Building Operational Cost Per Student					
Square Footage Per Student					
Computers					
Student/Computer Ratio					
2001-2003 all five elementary schools received: classroom renovations HVAC, lighting/mechanical upgrades cold storage garage communication/data enhancements					

TRANSPORTATION

	2006-07	2007-08	2008-09	2009-10	2010-11
Number of Routes	6	6 ½	6	6	6
Regular Route Buses Available	10	9	10	9	8
Average Bus Age	9 years	10 years	9 years	10 years	11 years
Average Bus Mileage	88,362	93,600	122,896	115,449	80,892
Average Miles Traveled per Bus for 6 Routes	15,222	14,167	15,045	15,439	13,842
Total Cost of Regular Route Busing	\$205,960 w/fuel adjustment	\$222,860	\$214,381	\$211,416	\$171,006 w/fuel adjustment
Cost Per Mile for Bus Operation	\$1.672	\$1.699	\$1.996	\$2.072	\$2,114
Number of Children Transported Daily	342	379	357	338	350
Number of Bus Routes Miles Each Day	516	559	510	489	457
Bus Route Miles Per Year	97,492	98,234	90,270	86,632	83,889
Extracurricular Activity Miles Per Year	97,545	106,858	118,633	116,190	107,378

FOOD SERVICE

	2006-07	2007-08	2008-09	2009-10	2010-11
# of Breakfasts Served	73,929	77,547	76,112	85,918	95,56
# of Lunches Served	431,341	431,597	438,173	439,992	454,382

	Elementary 06-07/07-08/08-09 09-10/10-11/11-12	Middle School 06-07/07-08/08-09 09-10/10-11/11-12	High School 06-07/07-08/08-09 09-10/10-11/11-12
Cost of Breakfast	\$1.65/\$1.65/\$1.65 \$1.65/\$1.75/\$1.75	\$1.60/\$1.75/\$1.80 \$1.80/\$1.90/\$1.90	\$1.90/\$1.95/\$1.95 \$1.95/\$2.05/\$2.05
Cost of Lunch	\$2.10/\$2.20/\$2.20 \$2.25/\$2.35/\$2.35	\$2.25/\$2.35/\$2.35 \$2.40/\$2.50/\$2.50	\$2.50/\$2.60/\$2.60 \$2.65/\$2.75/\$2.75

% of Children Eligible	2007-08	2008-09	2009-10	2010-11	2011-12
Free Meals	19%	19%	20%	24%	25%
Reduced Price Meals	8%	8%	9%	9%	8%
Full Price Meals	73%	73%	71%	67%	67%

Average Daily Participation in Food Service Program	2006-07	2007-08	2008-09	2009-10	2010-11
Simmons Elementary	80.91%	83.36%	82.32%	84.90%	84.00%
Lincoln Elementary	85.98%	83.18%	86.95%	91.60%	83.00%
O.M. Tiffany Elementary	*82.13%	81.35%	83.19%	84.00%	88.00%
May Overby Elementary	*80.69%	76.45%	81.52%	84.10%	89.00%
C.C. Lee Elementary	70.14%	*75.73%	76.50%	77.20%	80.00%
Simmons Middle School	87.18%	82.18%	**87.93%	89.50%	91.00%
Holgate Middle School	85.24%	81.87%	86.47%	88.20%	84.00%
Central High School	71.06%	70.48%	74.61%	73.30%	76.00%
Alternative Learning Center	100.00%	100.00%	100.00%	100.00%	100.00%

*Elementary Surges attributed to the implementation of all day/every day Kindergarten

**Simmons Middle School Kitchen Remodeling completed October 2008

EXTRACURRICULAR PROGRAMMING OF

THE ABERDEEN SCHOOL DISTRICT ACTIVITIES OFFERED



SDHSAA PARTICIPATION SURVEY

2006-07

	Boys Participation	Girls Participation	Total Enrollment
9 th Grade	180	169	349
10 th Grade	145	150	295
11 th Grade	140	130	270
12 th Grade	131	155	286

ACTIVITY	BOY PARTICIPATION				TOTAL	GIRL PARTICIPATION				TOTAL
	9th	10th	11th	12th		9th	10th	11th	12th	
Basketball	15	15	6	4	40	14	6	4	4	28
Cross Country	2	7	1	5	15	5	3	6	2	16
Football	44	25	26	14	109	0	0	0	0	0
Golf	3	6	5	5	19	5	7	2	2	16
Gymnastics						11	2	2	3	18
Tennis	4	6	3	3	16	5	2	0	1	8
Track & Field/Outdoor	18	16	17	12	63	16	13	11	8	48
Volleyball						32	13	8	8	59
Wrestling	11	9	5	3	28	0	0	0	0	0
Competitive Spirit	0	0	0	0	0	0	0	0	0	0
Cheerleading	0	0	0	0	0	0	0	0	0	0
Drill Team	0	0	0	0	0	0	0	0	0	0
Pom Pom Squad	0	0	0	0	0	0	0	0	0	0
Band	17	17	16	8	58	19	20	10	10	59
Orchestra	13	5	9	1	28	15	10	12	7	44
Vocal	18	10	16	10	54	50	30	18	9	107
Newspaper	1	0	0	0	1	3	3	3	3	12
Yearbook	1	0	0	0	1	3	3	3	3	12
Student Council	1	2	2	2	7	3	2	4	6	15
Oral Interp	5	4	1	1	11	5	1	0	2	8
Debate: Policy	27	6	4	3	40	22	3	4	2	31
Lincoln- Douglas	2	1	0	1	4	1	1	0	1	3
+Individual Events	20	6	4	3	33	18	3	4	5	30
++Drama: Fall	6	7	5	8	26	8	6	10	12	36
++Drama: Winter	4	4	5	5	24	5	5	8	9	28
++Drama: Spring	4	7	9	13	33	8	11	11	14	44

* **COMPETITIVE SPIRIT SQUAD:** Squads/Participants compete in a state championship, regardless whether sponsored by a state association.

** **CHEER:** Participants do not compete in a state championship

+ **SPEECH: Individual Events** consists of extemp. Speaking and original oratory and is not to be confused with oral interp. which occurs at a different time during the school year.

++ **DRAMA** includes 3-act plays, 1-act plays and musicals.

2007-08

	Boys Participation	Girls Participation	Total Enrollment
9 th Grade	151	131	282
10 th Grade	163	170	333
11 th Grade	134	157	291
12 th Grade	147	131	272

ACTIVITY	BOY PARTICIPATION					GIRL PARTICIPATION				
	9th	10th	11th	12th	TOTAL	9th	10th	11th	12th	TOTAL
Basketball	14	11	9	5	39	12	9	3	2	26
Cross Country	4	2	6	1	13	4	5	2	4	15
Football	33	30	18	19	100	0	0	0	0	0
Golf	15	5	6	4	30	1	1	3	0	5
Gymnastics						1	3	3	1	8
Tennis	2	4	5	2	13	3	4	2	0	9
Track & Field/Outdoor	16	15	16	8	55	16	9	9	3	37
Volleyball						17	12	7	3	39
Wrestling	8	14	9	4	35	0	0	0	0	0
Competitive Spirit	0	0	0	0	0	8	5	13	4	30
Cheerleading	0	0	0	0	0	2	3	11	1	17
Drill Team	0	0	0	0	0	0	0	0	0	0
Pom Pom Squad	0	0	0	0	0	0	0	0	0	0
Band	20	14	14	13	61	13	20	18	9	60
Orchestra	7	13	5	7	32	14	6	9	13	42
Vocal	14	12	11	12	49	39	31	18	17	105
Newspaper	0	0	1	1	2	0	0	9	8	17
Yearbook	0	0	1	1	2	0	0	9	8	17
Student Council	3	3	2	3	11	1	1	4	5	11
Oral Interp	5	4	3	0	12	9	2	1	0	12
Debate: Policy	34	2	2	1	39	29	1	1	0	31
Lincoln- Douglas	0	3	2	0	5	0	1	1	0	2
Public Forum	4	1	0	1	6	0	1	1	0	2
+Individual Events	29	4	3	2	38	20	3	2	2	27
++Drama: Fall	1	2	4	2	9	2	2	3	1	8
++Drama: One- Act	5	3	4	3	15	2	4	4	3	13
++Drama: Spring	1	1	4	2	8	1	2	3	1	7

* **COMPETITIVE SPIRIT SQUAD:** Squads/Participants compete in a state championship, regardless whether sponsored by a state association.

** **CHEER:** Participants do not compete in a state championship

+ **SPEECH: Individual Events** consists of extemp. Speaking and original oratory and is not to be confused with oral interp. which occurs at a different time during the school year.

++ **DRAMA** includes 3-act plays, 1-act plays and musicals.

2008-09

	Boys Participation	Girls Participation	Total Enrollment
9 th Grade	136	143	279
10 th Grade	154	138	292
11 th Grade	144	148	292
12 th Grade	137	146	283

ACTIVITY	BOY PARTICIPATION					GIRL PARTICIPATION				
	9th	10th	11th	12th	TOTAL	9th	10th	11th	12th	TOTAL
Basketball	15	10	10	5	40	9	7	6	2	24
Cross Country	4	5	3	4	16	6	6	3	2	17
Football	39	30	20	10	99	0	0	0	0	0
Golf	3	10	7	1	21	0	2	1	2	5
Gymnastics						1	1	3	1	6
Tennis	2	2	2	6	12	8	2	3	2	13
Track & Field/Outdoor	20	15	16	6	57	16	10	9	4	39
Volleyball						17	8	9	5	39
Wrestling	15	8	7	6	36	0	0	0	0	0
Competitive Spirit	0	0	0	0	0	7	9	3	11	30
Cheerleading	0	0	0	0	0	3	4	2	3	12
Drill Team	0	0	0	0	0	0	0	0	0	0
Pom Pom Squad	0	0	0	0	0	0	0	0	0	0
Band	15	12	7	9	43	13	9	15	9	46
Orchestra	7	6	11	4	28	8	12	4	2	26
Vocal	12	9	7	8	36	30	32	18	16	96
Newspaper	0	0	0	2	2	0	0	7	10	17
Yearbook	0	0	0	2	2	0	0	7	10	17
Student Council	0	1	2	3	6	4	3	3	5	15
Oral Interp	3	3	2	2	10	3	2	1	1	7
Debate: Policy	31	5	3	2	41	44	1	2	1	48
Lincoln- Douglas	3	0	3	2	8	2	1	1	0	2
Public Forum	0	1	1	0	2	6	1	1	2	10
+Individual Events	20	5	7	3	35	22	0	3	2	27
++Drama: Fall	4	4	6	9	23	3	6	5	13	27
++Drama: One- Act	2	2	6	3	13	3	2	3	4	12
++Drama: Spring	3	5	5	13	26	5	3	8	14	30

* **COMPETITIVE SPIRIT SQUAD:** Squads/Participants compete in a state championship, regardless whether sponsored by a state association.

** **CHEER:** Participants do not compete in a state championship

+ **SPEECH: Individual Events** consists of extemp. Speaking and original oratory and is not to be confused with oral interp. which occurs at a different time during the school year.

++ **DRAMA** includes 3-act plays, 1-act plays and musicals.

2009-10

	Boys Participation	Girls Participation	Total Enrollment
9 th Grade	156	138	294
10 th Grade	150	163	313
11 th Grade	144	131	275
12 th Grade	152	157	309

ACTIVITY	BOY PARTICIPATION					GIRL PARTICIPATION				
	9th	10th	11th	12th	TOTAL	9th	10th	11th	12th	TOTAL
Basketball	16	9	5	8	38	12	6	7	4	30
Cross Country	1	4	4	3	12	4	6	7	3	20
Football	36	30	21	21	108	0	0	0	0	0
Golf	11	4	7	5	27	4	0	1	0	5
Gymnastics	0	0	0	0	0	2	1	1	3	7
Tennis	3	3	3	7	16	4	6	2	2	14
Track & Field/Outdoor	14	20	18	10	62	13	11	13	8	45
Volleyball	0	0	0	0	0	18	12	8	6	44
Wrestling	8	11	10	8	37	0	0	0	0	0
Competitive Spirit	0	0	0	0	0	4	6	7	2	19
Cheerleading	0	0	0	0	0	4	8	7	2	21
Drill Team	0	0	0	0	0	0	0	0	0	0
Pom Pom Squad	0	0	0	0	0	0	0	0	0	0
Band	17	6	7	7	37	19	12	13	6	50
Orchestra	5	5	5	9	24	6	7	9	1	23
Vocal	10	10	1	6	27	38	20	4	18	80
Newspaper	0	0	0	0	0	0	0	8	1	9
Yearbook	0	0	0	0	0	0	0	8	1	9
Student Council	2	1	4	3	10	3	4	2	3	12
Oral Interp	2	3	0	2	7	5	5	4	0	14
Debate: Policy	5	2	4	3	14	2	0	0	1	3
Lincoln- Douglas	2	1	0	2	5	0	3	0	2	5
Public Forum	1	3	1	0	5	8	3	2	1	14
+Individual Events	6	3	1	3	13	2	1	0	2	5
++Drama: Fall	11	5	12	8	36	12	13	8	15	48
++Drama: One- Act	13	8	12	8	41	9	14	11	13	47
++Drama: Spring	5	8	12	6	31	14	16	12	17	59

* **COMPETITIVE SPIRIT SQUAD:** Squads/Participants compete in a state championship, regardless whether sponsored by a state association.

** **CHEER:** Participants do not compete in a state championship

+ **SPEECH: Individual Events** consists of extemp. Speaking and original oratory and is not to be confused with oral interp. which occurs at a different time during the school year.

++ **DRAMA** includes 3-act plays, 1-act plays and musicals.

2010-11

	Boys Participation	Girls Participation	Total Enrollment
9 th Grade	164	145	309
10 th Grade	148	133	281
11 th Grade	140	157	297
12 th Grade	142	124	266

ACTIVITY	BOY PARTICIPATION					GIRL PARTICIPATION				
	9th	10th	11th	12th	TOTAL	9th	10th	11th	12th	TOTAL
Basketball	13	9	6	3	31	15	10	5	2	32
Cross Country	2	0	2	4	8	3	3	6	5	17
Football	40	28	18	22	108	0	0	0	0	0
Golf	8	7	4	4	23	5	5	1	1	12
Gymnastics	0	0	0	0	0	9	1	1	1	12
Tennis	3	2	9	2	16	4	3	5	1	13
Track & Field/Outdoor	19	10	14	6	49	19	9	6	5	39
Volleyball	0	0	0	0	0	20	15	3	4	42
Wrestling	16	7	5	7	35	0	0	0	0	0
Competitive Spirit	0	0	0	0	0	2	6	4	7	19
Cheerleading	0	0	0	0	0	4	1	4	1	10
Drill Team	0	0	0	0	0	0	0	0	0	0
Pom Pom Squad	0	0	0	0	0	0	0	0	0	0
Band	22	15	3	13	53	19	16	12	7	54
Orchestra	11	4	4	5	24	15	6	5	6	32
Vocal	18	4	10	5	37	37	30	18	19	104
Newspaper	0	0	1	0	1	0	0	2	6	8
Yearbook	0	0	1	0	1	0	0	2	6	8
Student Council	0	3	1	4	8	2	5	5	2	14
Oral Interp	2	3	4	2	11	2	2	5	1	10
Debate: Policy	5	2	2	5	14	4	2	0	0	6
Lincoln- Douglas	1	1	0	0	2	0	0	2	0	2
Public Forum	1	2	4	1	8	2	3	3	0	8
+Individual Events	10	5	6	6	27	6	6	5	0	17
++Drama: Fall	3	4	5	24	36	2	7	9	16	34
++Drama: One- Act	5	2	4	8	19	4	8	6	8	26
++Drama: Spring	7	5	8	18	38	4	4	8	14	30

* **COMPETITIVE SPIRIT SQUAD:** Squads/Participants compete in a state championship, regardless whether sponsored by a state association.

** **CHEER:** Participants do not compete in a state championship

+ **SPEECH: Individual Events** consists of extemp. Speaking and original oratory and is not to be confused with oral interp. which occurs at a different time during the school year.

++ **DRAMA** includes 3-act plays, 1-act plays and musicals.

