



| Vessel name    | Built | IMO no. | Flag              | Vessel name    | Built | IMO no. | Flag              |
|----------------|-------|---------|-------------------|----------------|-------|---------|-------------------|
| BBC Amber      | 2011  | 9563706 | Antigua & Barbuda | BBC Opal       | 2013  | 9504762 | Antigua & Barbuda |
| BBC Amethyst   | 2012  | 9504724 | Antigua & Barbuda | BBC Pearl      | 2013  | 9504786 | Antigua & Barbuda |
| BBC Aquamarine | 2012  | 9504736 | Antigua & Barbuda | BBC Sapphire   | 2013  | 9504798 | Antigua & Barbuda |
| BBC Citrine    | 2012  | 9504748 | Antigua & Barbuda | BBC Ruby       | 2013  | tba     | Antigua & Barbuda |
| BBC Coral      | 2012  | 9563720 | Antigua & Barbuda | BBC Quartz     | 2014  | 9504774 | Antigua & Barbuda |
| BBC Emerald    | 2012  | 9504750 | Antigua & Barbuda | BBC Topaz      | 2014  | tba     | Antigua & Barbuda |
| BBC Moonstone  | 2012  | 9563732 | Antigua & Barbuda | BBC Tourmaline | 2014  | 9504803 | Antigua & Barbuda |

## MAIN DATA

|                            |  |
|----------------------------|--|
| <b>Vessel type</b>         | Multipurpose Heavylifter   |
| <b>Classification</b>      | GL + 100 A5 E3 IW BWM DG + MCE3 AUT  |
| <b>GT/NT</b>               | 12,838 / 5,968   |
| <b>Deadweight (summer)</b> | 14,360 mt  |
| <b>Max. draft (summer)</b> | 9.10 m   |
| <b>Length o.a.</b>         | 153.44 m   |
| <b>Breadth moulded</b>     | 23.20 m  |
| <b>Depth to main deck</b>  | 11.95 m  |
| <b>Height above keel</b>   | 40.85 m  |
| <b>Speed</b>               | 17.5 knots   |
| <b>Fuel consumption</b>    | 38.5 mt RMG 380 fuel per day at sea<br>2.0 mt MGO DMA per day in port without gear<br>4.0 mt MGO DMA per day in port with gear |

## HOLDS/HATCHES/CRANES

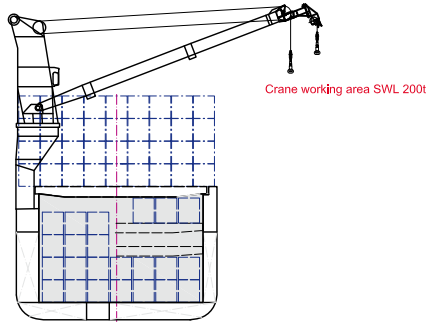
|                               |   |
|-------------------------------|---|
| <b>Cargo hold capacity</b>    | 18,176 cbm / 641,878 cbft   |
| <b>Floor space under deck</b> | 2,986 sqm / 32,141 sqft   |
| <b>Floor space on deck</b>    | 1,891 sqm / 20,354 sqft   |
| <b>Cranes</b>                 | 2 NMF cranes situated portside<br>400 mt capacity each /<br>800 mt capacity combined<br>Plus 1 NMF crane situated starboardside<br>80 mt capacity |
| <b>Container intake</b>       | 985 TEU nominal   |
| <b>Deck strengths per sqm</b> | 20.00 mt on tanktop<br>5.00 mt on tweendeck<br>5.00 mt on hatchcovers   |

>>> see reverse side for further info/details

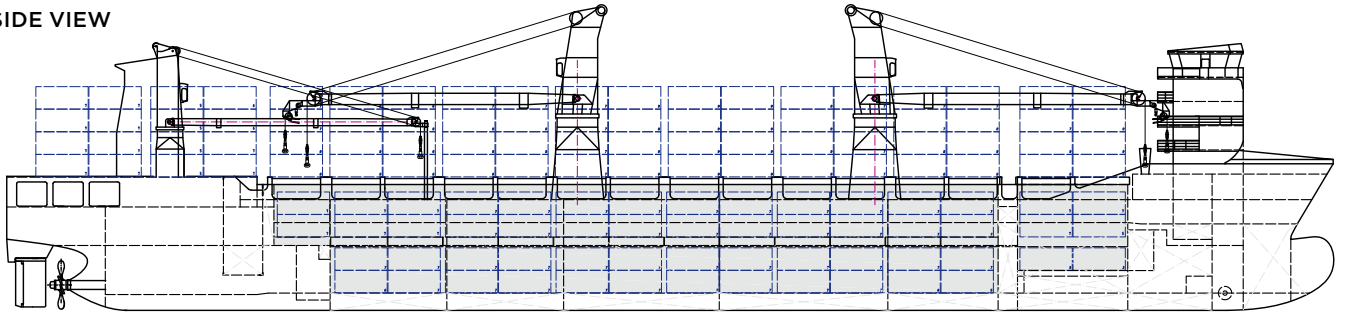
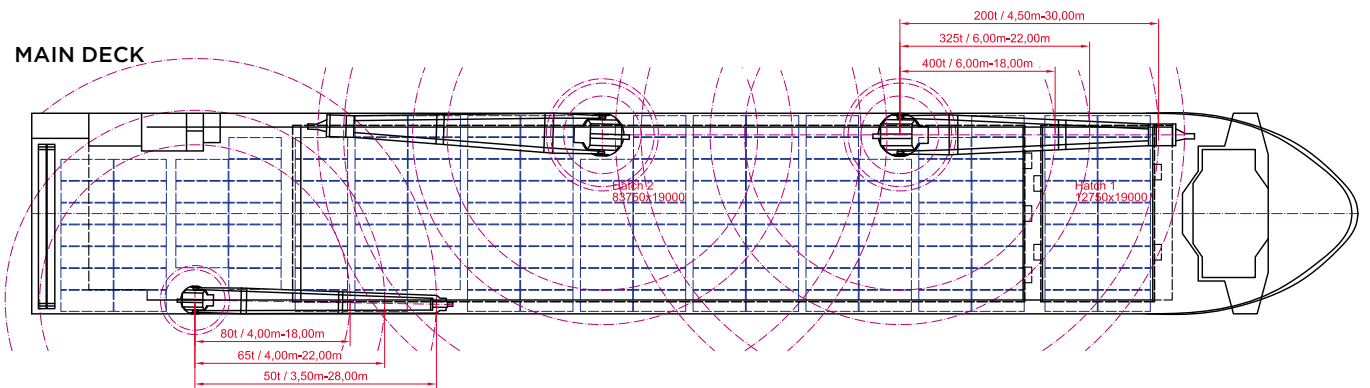
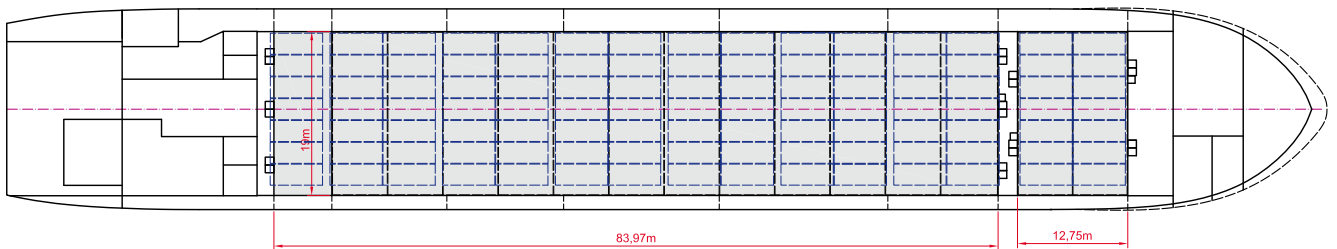
## SPECIAL EQUIPMENT/FEATURES

Fitted for trading Australia.  
Fitted for carriage of dangerous goods of all IMO classes.

Speed and consumption figures are calculated basis maximum Beaufort 2, no swell and no adverse currents. Consumption data assumes shaft generator and reefer plugs disconnected. Vessel is burning fuels according to ISO 8217-2005. Intake is always subject to vessel's stability, trim, permissible weights and is subject to regulations of visibility. Lifting capacity of vessel's cranes is subject to vessel's stability and can depend on cargo/ballast on board. Container data as well as bale capacity assumes tweendeck ashore. All details including speed and consumption are given in good faith and are „about“ and are given without guarantee. They must not be used as basis for charterparties or contracts without BBC's explicit written authority.



|                |                |
|----------------|----------------|
| BBC Amber      | BBC Opal       |
| BBC Amethyst   | BBC Pearl      |
| BBC Aquamarine | BBC Sapphire   |
| BBC Citrine    | BBC Ruby       |
| BBC Coral      | BBC Quartz     |
| BBC Emerald    | BBC Topaz      |
| BBC Moonstone  | BBC Tourmaline |

**SIDE VIEW**

**MAIN DECK**

**TWEENDECK**

**HOLDS & DOUBLE BOTTOM**
