

# DECOYS & SPORTING COLLECTIBLES

## Auction October 26, 2008 The Taylor Pavillion

5th Avenue and Ocean Avenue • Belmar, NJ

**Preview:** Saturday, October 6, 11:00 a.m. to 4:00 p.m.  
Sunday, October 7, 8:00 a.m. to 9:45 a.m.

**Auction:** Sunday, October 7, 10:00 a.m. Start Time

**Directions:** Garden State Parkway to Exit 98, Proceed through toll to Belmar exit (Route 138 East.) Continue east for approximately 2 miles. Bear left at merge to Route 35 North (Belmar.) Make right turn at Waterview Pavilion (8th Avenue.) Continue east to Ocean Avenue. Make left turn and continue 3 blocks to the Taylor Pavilion on the boardwalk.

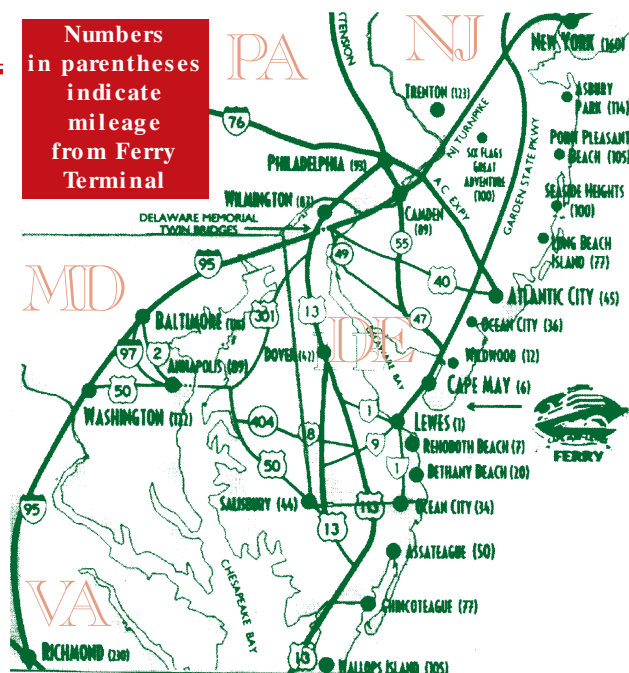
**Catalog:** Fully illustrated, \$25.00 (\$34.00 Outside U.S.) -- includes post sale price key.

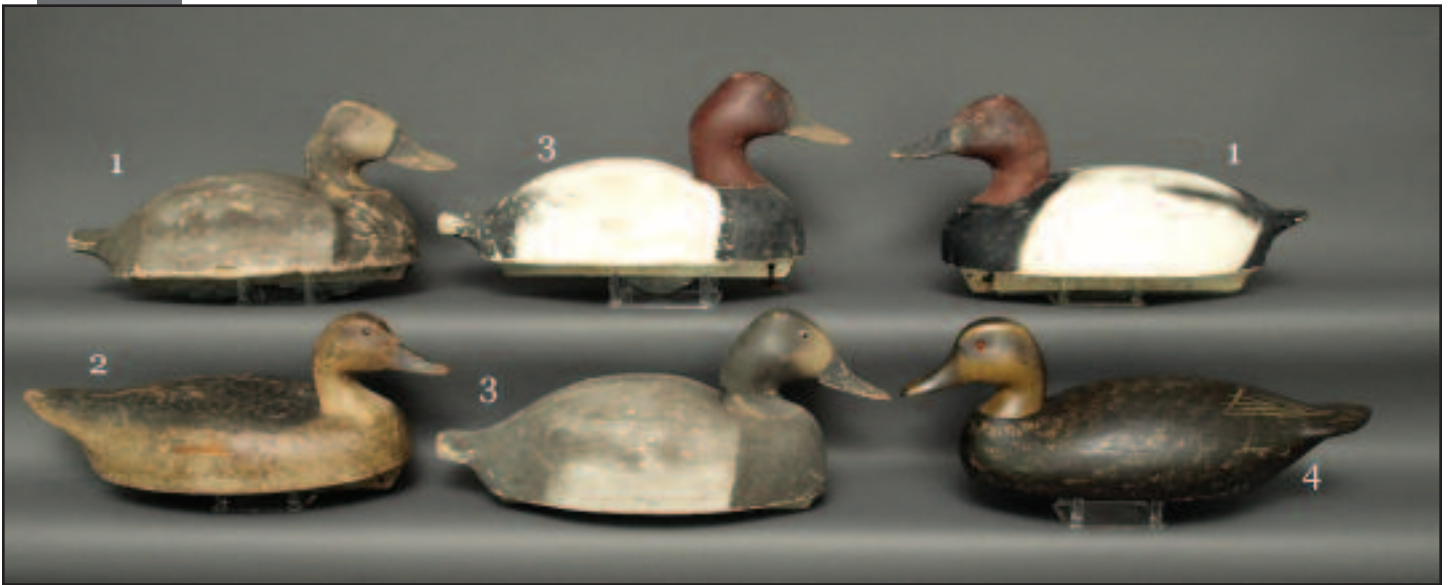
**Information:** For auction information and absentee/phone bidding information:  
Frank & Frank Sporting Collectibles LLC  
422 Lakewood-Farmingdale Road  
Howell, NJ 07731  
Phone/Fax: (732) 938-2988

Visit us at: [www.frankandfrankdecoys.com](http://www.frankandfrankdecoys.com) • Email: [afrank1807rh@cs.com](mailto:afrank1807rh@cs.com)



will be accepting  
**CONSIGNMENTS**  
for our  
**MARCH 2008  
AUCTION**  
Call Early  
to reserve space!  
Limited to 400 lots.





**1. PAIR OF CANVASBACKS** by the Wildfowler Decoy Company, Quogue, NY. Weathered original paint with some rubs and structurally good condition. One with circular brand. Both branded WGH. 100-200

**2. PINTAIL HEN** by the Wildfowler Decoy Company, Old Saybrook, CT. Retains good original paint showing in-use wear. Structurally very good with a 1" chip in tail tip. Hollow carved with inlet head. Full weighted keel. Brand on bottom. 300-400

**3. PAIR OF CANVASBACKS** by the Wildfowler Decoy Company, Quogue, NY. Weathered original paint and structurally sound condition. Both with bottom keels. One with round brand. Both branded WGH. 200-300

**4. SPECIAL ORDER BLACK DUCK** by the Wildfowler Decoy Company, Pt. Pleasant, NJ. Excellent original paint and structurally sound condition. Hollow carved with bottom keel removed. Strong Wildfowler brand. Also branded CHM. 200-300

**5. RARE PAIR OF BOOKENDS** by the Wildfowler Decoy Company, Old Saybrook, CT, comprising a black duck and a canvasback drake. Both IN excellent detailed paint and fine structural condition. Minute paint spatters on both. Both on walnut bases. 200-300

**6. FOUR DECOY BOOKS** by Henry Fleckenstein, Jr. Decoys of the Mid-Atlantic Region, signed and dedicated by author, American Factory Decoys, Shorebird Decoys, dedicated and signed, and New Jersey Decoys, dedicated and signed. All with dust jackets. All in exceptional condition. 200-300

**7. BROADBILL DRAKE** by the Wildfowler Decoy Company, Old Saybrook, CT. Superior balsa model in near-mint original paint and condition. Unused, unrigged. Exceptionally well-executed paint with fine feather work. See Wildfowler Decoys by Cowan and LaFountain. 300-400





**8. RARE WIDGEON DRAKE** by the Wildfowler Decoy Company, Old Saybrook, CT. Near-mint original paint and condition. Balsa Superior model, never rigged. An exceptionally well-painted and rare example of this factory's craftsmanship. See *Wildfowler Decoys* by Cowan and LaFountain. 400-600

**9. PINTAIL DRAKE** by the Wildfowler Decoy Company, Old Saybrook, CT. Superior balsa model in near-mint original paint and condition. Outstanding example with exceptional paint and patina. Arguably one of the finest Wildfowler decoys. A true classic! 300-400

**10. BLACK DUCK** by the Wildfowler Decoy Company, Old Saybrook, CT. Superior balsa model in near-mint original paint and condition. High-head model with bottom keel removed. Exceptional feather detail and ticking to head. For additional information, see *Wildfowler Decoys* by Cowan and LaFountain. 300-400

**11. MALLARD DRAKE** by the Wildfowler Decoy Company, Old Saybrook, CT. Superior balsa model in near-mint original paint and unused condition. Outstanding early example of the Wildfowler factory's finest work. The keel has been removed and original glass eyes are intact. 300-400

**12. REDHEAD DRAKE** by the Wildfowler Decoy Company, Old Saybrook, CT. Superior balsa model in near-mint original paint and condition. Unrigged. Exceptionally well-executed paint and a rare Wildfowler decoy. 300-400

13. **MALLARD DRAKE** by the Wildfowler Decoy Company. Old working paint. Together with a **BLACK DUCK** by the Wildfowler Decoy Company in old working paint. Both in good condition with full keels. 50-100 Not Shown

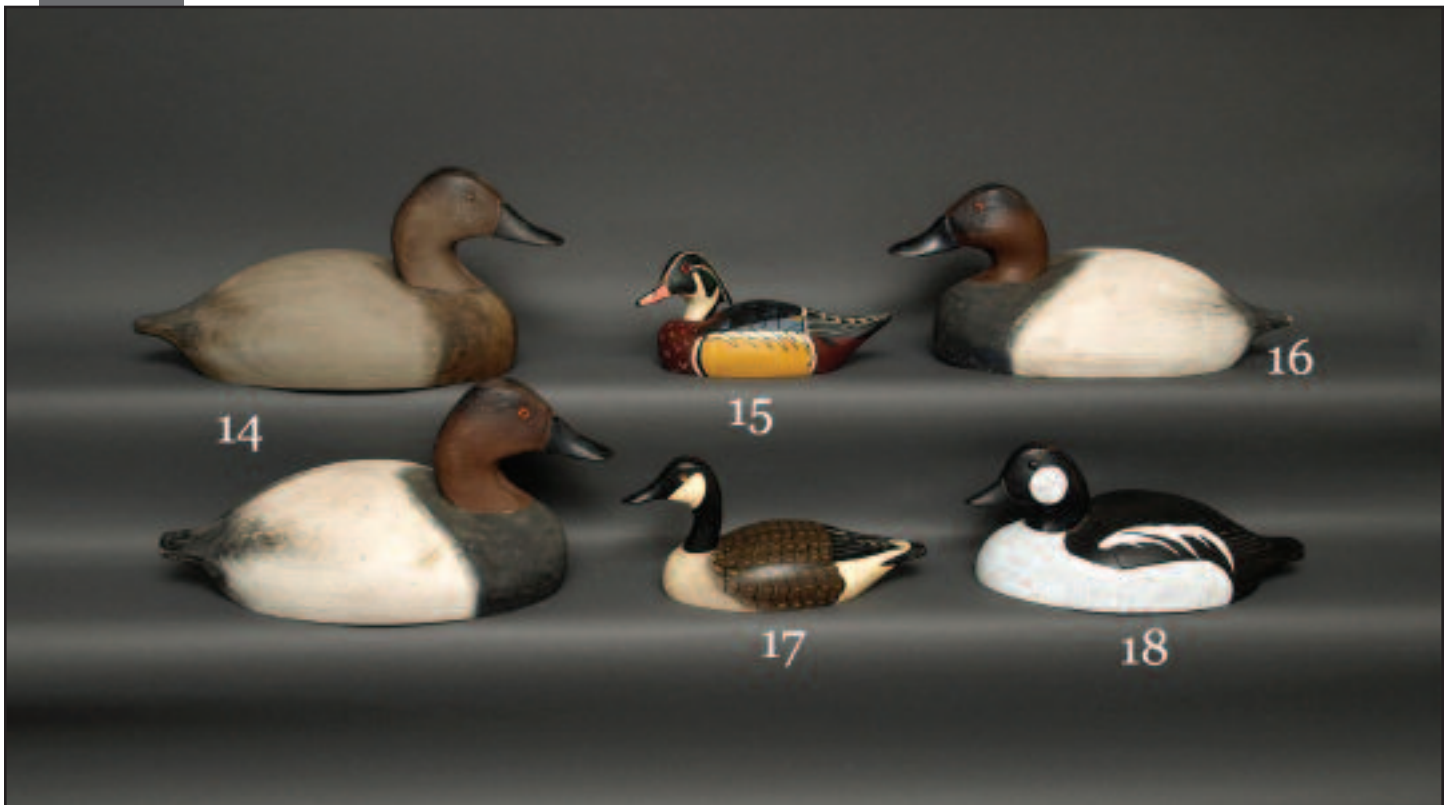
14. **PAIR OF CANVASBACKS** by the Wildfowler Decoy Company, Old Saybrook, Ct. Excellent original paint and condition with minor rubs to drake's tail. Both with keels removed. Both with good Wildfowler brands. 200-300

15. **ONE-HALF SIZE WOOD DUCK** by the Wildfowler Decoy Company, Pt. Pleasant, NJ. Mint original paint and condition. Signed DC (Dottie Clayton) under bill. Head turned sharply left. 100-200

16. **CANVASBACK DRAKE** by the Wildfowler Decoy Company, Old Saybrook, Ct. Excellent original paint and unused condition. Bottom keel removed. Slight opening of grain on left bottom side. Wildfowler brand. 100-200

17. **ONE-THIRD SIZE GOOSE** by the Wildfowler Decoy Company, Pt. Pleasant, NJ. Mint original paint and condition. DC (Dottie Clayton) under bill. Bears ink Wildfowler stamp on bottom. Signed Charles R. Birdsall and dated 1971. 100-200

18. **FINE GOLDENEYE DRAKE** by the Wildfowler Decoy Company. Excellent original paint and unused condition. Shows very good wing detail carving and comb painting on back. 100-200





**19. PAIR OF BROADBILLS** by the Wildfowl Decoy Company. Both with good original paint showing in-use wear. Both with full keels. Very early Wildfowlers. 75-150

**20. GROUP OF THREE SHOREBIRDS** by the Herter's Decoy Company, Waseca, MN. Mint original paint and condition. Group consists of a plover, a yellowleg and a whimbrel. All with bases. From the Murray Mitterhoff estate. 100-200

**21. PAIR OF PINTAILS** by the Mason Decoy Company, Detroit, MI. Early Standard grade models in excellent restored paint and good structural condition. Tip of drake's tail chipped. Fine hairline check to hen's head and back. 200-300

**22. RED-BREASTED MERGANSER DRAKE** by the Herter's Decoy Company, Waseca, MN. Excellent original paint and unused condition. Branded on bottom. 75-125

**23. WIDGEON DRAKE** by the Herter's Decoy Company, Waseca, MN. Mint unused condition. 50-75

**24. BLUEBILL DRAKE** by the Mason Decoy Company, Detroit, MI, circa 1905. Challenge grade in restored Mason style with paint by Bob Biddle, Media, PA. Structurally sound with bottom weights removed. 50-100

**25. BLUEBILL HEN** by the Mason Decoy Company, Detroit, MI. Premier grade, hollow carved with traces of original paint and overpaint. Bottom weight removed. 300-400

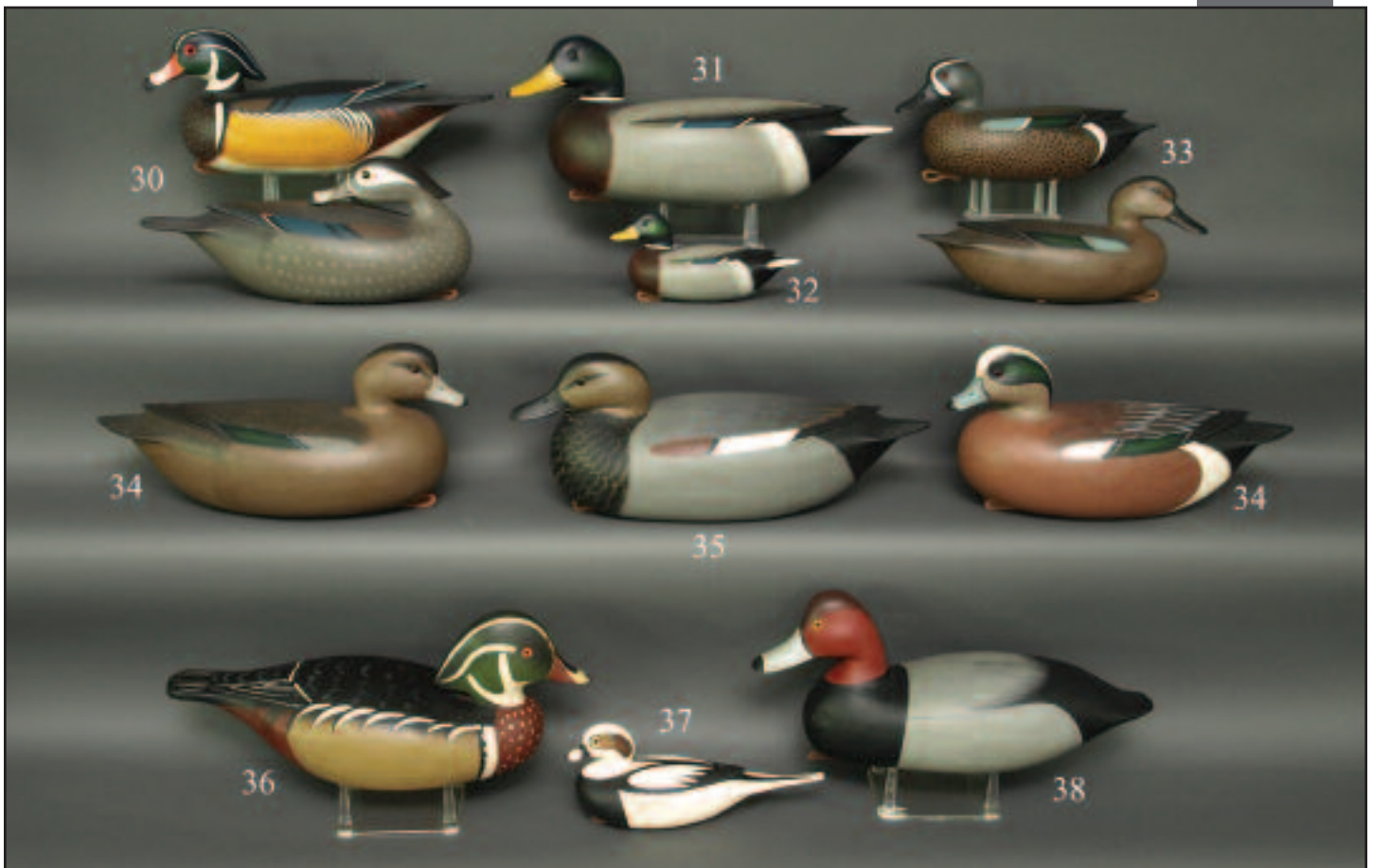
**26. RARE OVERSIZED CANVASBACK DRAKE** by the Mason Decoy Company, Detroit, MI. Seneca Lake Premier model in good original paint showing in-use wear to paint, exposing wood in areas. Wing tip and tail feather paint are strong. Solid model retaining bottom weight and eye ring. A similar example can be found in Mason Decoys by Goldberger and Haid, page 52. 500-700

**27. ONE-QUARTER SIZE MERGANSER HEN** by the Wildfowler Decoy Company, retailed through Wildlife Creations, Spring Lake, NJ. Mint in all respects. Wildlife Creations stamp on bottom. 50-75  
**ONE-QUARTER SIZE MERGANSER HEN** by the Wildfowler Decoy Company, retailed through Wildlife Creations, Spring Lake, NJ. Mint in all respects. Wildlife Creations stamp on bottom. 50-75

**28. FINE AND EARLY GREEN WING TEAL DRAKE** by the Mason Decoy Company, Detroit, MI, circa 1900, from the Murray Mitterhoff estate. Retains very good original paint showing some minor in-use wear. Structurally very good condition with a typical check in the center of the back extending from the base of the neck to the beginning of the tail. Small piece of wood missing where the neck meets the body. Retains original glass eyes. Retains strip weight and rigging staple. For similar examples see Mason Decoys by Goldberger and Haid. 500-700

**29. GROUP OF THREE FACTORY DECOYS** consisting of a MALLARD DRAKE by the Victor Decoy Co., original paint, an early BLUE BILL HEN, Herter's, cork, and a TEAL, varnished natural wood with glass eyes. All in good condition. 100-150





**30. PAIR OF WOOD DUCKS** by Fredrick C. Brown, Pt. Pleasant, NJ. Mint original paint and condition. Detailed feather paint overall. Both hollow carved with hen in a preening position. Both with bottom weights, maker's copper tag. Signed and dated 2005. 300-500

**31. MALLARD DRAKE** by Fredrick C. Brown, Jr., Pt. Pleasant, NJ. Mint original feather detailed paint and excellent condition. Carved with raised, carved wing detail and fluted tail. Head turned slightly left. Bottom weight, maker's tag. Signed and dated 2006. 200-300

**32. ONE-THIRD SIZE MALLARD DRAKE** by Fredrick C. Brown, Pt. Pleasant, NJ. Mint original paint and condition. Fine painted feather work overall. Raised, carved wing tips and fluted tail. Slightly turned head. Bottom weight. Signed and dated 2006. 100-150

**33. FINE PAIR OF BLUE WING TEAL** by Fredrick C. Brown, Pt. Pleasant, NJ. Mint original paint with detailed feather work. Excellent structural condition. Both with raised wing tips and fluted tail. Both hollow carved with bottom weights and maker's copper tag. Signed and dated 2005. 300-500

**34. PAIR OF WIDGEON** by Fredrick C. Brown, Pt. Pleasant, NJ. Excellent original paint showing very minor sap bleed. Both with excellent feather paint detail. Both with raised carved wing tips and fluted tail. Hollow carved. Both with bottom weights and maker's copper tags. Signed and dated 2005. 300-500

**35. GADWALL DRAKE** by Fredrick C. Brown, Pt. Pleasant, NJ. Mint original detailed feather paint and excellent condition. Raised carved wing tips and fluted tail. Hollow carved in a snug-head position. Bottom weight and maker's copper tag. Signed and dated 2005. 200-300

**36. WOOD DUCK DRAKE** by Barnegat Bay Decoy Company, Pt. Pleasant, NJ. Near-mint original paint and unused condition. Hollow carved with notation: "Rick Brown 1980." 200-300

**37. ONE-THIRD SIZE OLD SQUAW DRAKE** by Fredrick C. Brown, Pt. Pleasant, NJ. Mint original paint and condition. Raised carved wing tips and elongated fluted tail. Hollow. Head turned slightly. Bottom weight on bottom. Signed and dated 2006. 100-150

**38. EARLY REDHEAD DRAKE** by Fredrick C. Brown, Pt. Pleasant, NJ. Excellent original paint and unused condition. Fine comb work to paint on back. Hollow carved. Retains original bottom pad weight and rigging. 100-200



**39. ONE-THIRD SIZE PAIR OF BUFFLEHEADS** by Fredrick C. Brown, Pt. Pleasant, NJ. Mint original paint and condition. Both heads slightly turned. Raised carved wing tips and fluted tails. Both with weights. Both signed and dated 2000. 200-300

**40. PAIR OF BUFFLEHEADS** by Fredrick C. Brown, Jr., Pt. Pleasant, NJ. Near-mint original paint and unused condition. Fine feather detail. Hollow carved with tucked heads and raised carved wing tips and fluted tails. Both retain bottom weights. Signed and dated 1999. 200-300

**41. PAIR OF ONE-THIRD SIZE CANVASBACKS** by Fredrick C. Brown, Pt. Pleasant, NJ. Mint original condition. Both hollow carved with raised carved wing tips and fluted tails. Both heads slightly turned. Both with weights and thongs. Signed and dated 2002. 200-300

**42. ONE-THIRD SIZE WIDGEON DRAKE** by Fredrick C. Brown, Pt. Pleasant, NJ. Mint original paint and condition. Hollow carved with raised carved wing tips and fluted tail. Fine feather paint detail. Bottom weight and thong. Signed and dated 2006. 100-150

**43 CANADA GOOSE** by Fredrick C. Brown, Jr., Pt. Pleasant, NJ. Excellent original paint and unused condition. Hollow carved in a low-head position. Raised carved wing tips and broad fluted tail. Fine bill carving. Retains pad weight, rigging thong and maker's copper tag. Signed. 300-400

**44. THREE ONE-QUARTER SIZE CARVINGS** consisting of a PAIR OF PINTAILS AND A BLUE-WING TEAL DRAKE. All with excellent original detailed feather paint and structurally fine condition. All three signed J. Rinker on bottoms with decoy species also noted. 100-200



45. **BLACK DUCK** by the Wildfowler Decoy Company, Old Saybrook, CT. Very old working paint in good condition. Hollow carved with carved speculums. One eye missing. Retains bottom keel and full brand. 50-100
46. **EARLY BROADBILL DRAKE** by the Victor Decoy Company in excellent original paint showing light wear. Structurally sound condition. Together with a **MALLARD DRAKE** by the Victor Decoy Company. Excellent original paint with light wear. Structurally sound. Both branded VICTOR on bottom. Both with owner's copper tag. 200-300
47. **BROADBILL DRAKE** by the Animal Trap Decoy Company in good original paint. Appears to be unused. Together with a **BROADBILL DRAKE**, possibly Wisconsin, in old working paint and structurally sound condition. 50-100
48. **SEVEN BOOKS** consisting of *The Great Book of Wildfowl Decoys*, J. Engers, *American Bird Decoys*, W. Mackey, and *New Jersey Decoys*, by H. Fleckenstein. All in excellent condition with dust jackets. Also, four auction catalogs. 50-75
49. **GROUP OF FOUR MINIATURES** consisting of an Old Squaw and a wood duck drake by H.P. Mears and two standing geese by "Mutt" Cranmer. All with excellent original paint. All in structurally fine condition. 100-200
50. **TWELVE MISCELLANEOUS BOOKS AND CATALOGS**, related to decoys and bird carving, including *The Art of the Decoy* by Earnest, Ward Bros., and others. 75-125
51. **FOUR DECOY BOOKS** consisting of *American Bird Decoys* by William J. Mackey, Jr., signed and dedicated by author, *Floating Sculpture* by Huster and Knight, signed and dedicated by Bob White, *Decoys* by Quintina Coleo, signed and dedicated by author. *Mason Decoys*, with forward by Byron Cheever. First edition, signed by Cheever. All in good condition. Three with dust covers. 200-300





**52. YELLOWLEG SHOREBIRD** by George Strunk, Glendora, NJ. Excellent original antiqued paint and structurally fine condition. Split-tail carving. Branded GS on bottom. Mounted on a custom base. 100-200

**53. GOLDEN PLOVER** by Russ Allen, Port Republic, NJ. Excellent original paint and structurally fine condition. Together with a small PLOVER in excellent antiqued paint and structurally excellent condition with raised, relief-carved wings. Both branded RA. 200-300

**54. TWO CURLEWS.** The first by George H. Cooke, Island Heights, NJ. Good original paint with some scuffs. Structurally sound condition. Branded GHC on bottom. The second, by an unknown carver, in good original antiqued paint. Split-tail carving, iron bill and iron carrying loop. 100-200

**55. GROUP OF FOUR SHOREBIRDS** carved by George Elmer, Bruce Bieber, Ed Clark and Z. McAnney. All in very good original paint. Three with split-tail carving. One carved in the manner of A. Hildreath. 100-200

**56. THREE BIRD CARVINGS** consisting of two doves and a sanderling by J.P. Hand, Cape May Courthouse, NJ. All in excellent original paint and structurally sound condition. All branded on bottoms. All on custom bases. 100-200

**57. THREE FINE SHOREBIRDS** by Steve Morey, Tuckerton, NJ, consisting of a BLACK-BREAST PLOVER, a GOLDEN PLOVER and a WHIMBREL. All in excellent original structural condition. The plover with a natural split on side. All with split-tail carving. All with carved M on bottoms. All on custom bases. 300-400

**58. THREE WELL-CARVED SHOREBIRDS** consisting of a Golden Plover, a Lesser Yellowlegs and a Sanderling. All in excellent original paint and structurally fine condition. All with raised carved tail work. All stamped JR on bottom. 100-200



**59. TWO NEW JERSEY CROWS.** One by M. Yannelli, the second by B. DaGross. Both with split-tail carving. One with pinned wings with small area of white paint. Both on custom bases. 100-200

**60. TWO CROWS** by B. DaGross, in excellent original paint and structurally fine condition. Both with applied pinned wings. Both with carved split tails. Both signed and on custom bases. 100-200

**61. TWO CROWS** by J.P. Hand, Cape May Courthouse, NJ. Both with excellent original paint and structurally sound condition. Both with carved split tail. Both branded JPH. Both on custom bases. 100-200



62. **DECORATIVE SHOREBIRD** from Chincoteague, VA. Excellent original paint and structurally fair condition. Bottom part of bill tip is missing. Mounted on a driftwood base with applied base. Illegible signature on bottom. 75-125
63. **PAIR OF WHIMBRELS** by Dave Rhodes, Absecon, NJ. Near-mint original paint and structurally very good condition. One with a hairline crack in underside of bill near face. Both with deep relief-carved wings and split tail. Both with heads turned slightly left. One of Rhodes' earlier works. Both mounted on display stands. 200-300
64. **YELLOWLEG** by Harry V. Shourds, Seaville, NJ. Excellent original paint and condition with carved split tail. Together with a small plover by H.V. Shourds, Seaville, NJ. Excellent original paint and condition. Both signed on underside of decoys. 100-150
65. **PAIR OF HOODED Mergansers** by noted New Jersey carver Bob Brown. Near-mint original paint and unused condition. Both hollow carved with wing detail and carved fluted crests. Both heads slightly turned. Both retain bottom pad weights and rigging straps. Branded RJ Brown. 300-500
66. **PAIR OF AMERICAN Mergansers** by Bob Biddle, Media, PA. Excellent original paint and condition. Both solid carved swimmers. Both retain bottom weights stamped RGB. Both signed. 100-200
67. **TWO ENGRAVINGS** by Churchill Ettinger titled Pitching Mallards and Scaling In. Both in generally good condition with some foxing on Scaling In. Both signed LR. Both images approximately 8 1/2" x 12 1/4". Both framed, one glazed. 100-200



68. **AN UNUSUAL FISH DECOY** carved in the form of a pumpkin seed, in original paint with inset metal fins and inlet bottom weight. Retains early glass eyes. 100-150
69. **EARLY ICE FISHING LURE** carved in the form of a pike. Good original paint with minor wear. Metal fins and two inlet weights in bottom. Overall length is 10". 100-150
70. **GREEN WING TEAL DRAKE** by Louis Kean, Jr. Near-mint original paint and condition. Competition shooting model. Together with a Wood Duck Hen by Charl Greene in near-mint paint and condition. Hollow carved in a preening position. Signed and dated 1978. 100-200
71. **BUFFLEHEAD HEN** by Norm Walsh. Gunning competition model in near-mint original paint and unused condition. Very minor dent on forehead. Relief-carved wings and broad tail. Head turned slightly right. Full deep keel. Signed and dated 1987. 75-125
72. **GREEN WING TEAL DRAKE** by Jack Tierney, Stratford, CT. Excellent original paint and unused condition. Competition model. Together with a Ruddy Duck by Phil Rothernut in excellent original paint and unused condition. Cork body competition gunning stool. 100-200



**73. PAIR OF BUFFLEHEADS** by the Barnegat Bay Decoy Company, Pt. Pleasant, NJ. Shourds models in near-mint original paint and unused condition. Both hollow carved with inlet bottom weights. Hen signed Fredrick C. Brown and dated 1981 with notation: "1 of 50." 200-300

**74. FINE BLACK-BREAST PLOVER** by John Hillman, Sea Girt, NJ. Near-mint original paint with fine feather detail. Structurally excellent condition. Relief-carved wing detail. Small knot area on left front side. Exceptional carving by this decoy legend. 200-300

**75. PAIR OF MINIATURE OLD SQUAWS** by George Strunk, Glendora, NJ. Mint original paint and condition. Both with raised carved wings and heads turned slightly left. Both signed and dated 1989 on bottoms. 200-300

**76. OVERSIZED BLACK DUCK** by J.P. Hand, Cape May Courthouse, NJ. Near-mint original paint by George Strunk, Glendora, NJ. Structurally sound, hollow carved. Deep ice groove and bottom pad weight. Branded by carver and signed by painter. 200-400

**77. WOOD DUCK DRAKE** by J.P. Hand, Cape May Courthouse, NJ. Excellent original paint and unused condition. Hollow carved. Branded on bottom. Together with a HOODED MERGANSER HEN by John Holloway, Florence, NJ. Excellent original paint and unused condition. Hollow carved. Branded on bottom. 100-200

**78. RED-BREASTED MERGANSER HEN** by H.V. Shourds, Seaville, NJ. Excellent original paint and unused condition. Hollow carved with the head turned slightly right. Inlet bottom weight with leather thong. Signed on bottom by maker. 100-200

**79. ONE-QUARTER SIZE GADWALL HEN** by "Pokey" Tilton, Barnegat, NJ. Near-mint original paint and condition. Very fine painted feather detail and fine ticking. Head turned slightly left. An exceptionally well-executed carving in the Barnegat Bay tradition. 100-200

**80. EARLY PAIR OF WOOD DUCKS** by John Holloway, West Creek, NJ. Fine early pair of wood ducks in near-mint paint and unused condition. Both hollow carved with carved crests, raised wings and fanned tail carving. Both with deep crisp JRH brands. Both with pad weights and rigging. 200-400

**81. PAIR OF RED-BREASTED MERGANSERS** by Dolph Hall. Near-mint original paint and unused condition. Both hollow carved with deep ice groove. Both retain pad weights and rigging. Both branded D HALL. 200-400





82. **EARLY RED-BREASTED MERGANSER DRAKE** by Steve Morey, Tuckerton, NJ. Very good original paint that has crazing on breast and rear back and underside. Unused condition. Head turned slightly left. Carved M in bottom. 100-200
83. **HOODED MERGANSER DRAKE** by Roger Mitchell, Kingston, MA. Near-mint original paint and unused condition. Painted feather crest. Unweighted. Maker's stamp on bottom. 200-400
84. **BLACK DUCK** by Roger Mitchell, Kingston, MA. Near-mint original paint and unused condition. Fine painted feather detail executed in the Crowell tradition. Unweighted. Maker's name carved in bottom. 200-400
85. **GRAY-BACK GULL AND AN OYSTER CATCHER** by J.P. Hand, Cape May Courthouse, NJ. Both with very good original paint with minor shelf scuffs. The gull with inlet bottom weight. Both branded JPH on bottoms. 200-300
86. **PINTAIL DRAKE SLEEPER** by Roger Mitchell, Kingston, MA. Near-mint original paint and unused condition. Fine feather paint detail. Raised carved crossed wing tips with fluted tail carving. Unweighted. Maker's stamp on bottom. 300-500
87. **BLUE WING TEAL DRAKE** by Roger Mitchell, Kingston, MA, in near-mint original paint and unused condition. Painted feather detail, deep ice groove and carved fluted tail. Full bottom keel. Maker's stamp on bottom. 100-300
88. **WIDGEON DRAKE** by Roger Mitchell, Kingston, MA. Near-mint original paint and condition. Fine painted feather detail with carved fluted tail. Unweighted, with maker's stamp on bottom. 200-400
89. **WOOD DUCK DRAKE** in antiqued original paint and structurally sound condition. Hollow carved in a preening position. Raised carved wing tips and inlet bottom weight. 100-200
90. **FOUR DUCK CALLS** consisting of a Marv Meyer duck call in the original box in mint unused condition, a Marv Meyer presentation duck call with brass tag, unused condition, a Bill Green carved duck call with redheads on barrel, and a Marv Meyer wood call in good condition. 100-200
91. **BUFFLEHEAD DRAKE** by G.P. Trout, Smithfield, VA. Near-mint original paint and condition. Competition gunning model. Deep keel. Signed and dated 1979 on bottom. 100-200
92. **THREE SMALL BOAT CARVINGS** consisting of two sneak boxes and a New Jersey garvey. All in good condition. 40-50
93. **OLD SQUAW DRAKE** by Frank Dobbins, ME, from the Murray Mitterhoff estate, in original unused paint and condition. Signed on bottom. 100-200
94. **RARE EARLY PUFFIN** by Charles "Pete" Wilber, Island Heights, NJ. Excellent original paint and condition. Spit-tail carving. Signed and branded CW on bottom. 100-200
95. **GOLDENEYE DRAKE** by William Veasey in excellent original paint and unused condition. Competition gunning model with deep keel. Exhibits fine bill carving, knot head and drop tail. 100-200



**96. EXCELLENT FULL-SIZE WHISTLING SWAN** by Oliver "Tuts" Lawson, Crisfield, MD. Retains near-mint original paint with painted wing feather detail. Structurally excellent with deep ice groove wing separation and finely carved bill detail. High-head model turned slightly right. Hollow carved. Signed and dated 2003 on bottom. 6000-8000

**96.A LIMITED EDITION HAND-TINTED PHOTO-LITHOGRAPH** of a period pick-up truck loaded with Upper Bay decoys. No. 16/250. Signed Ken Hutchinson LR. Image size approximately 20" x 30". Together with an UPPER BAY BLACK DUCK in excellent original paint and unused condition. This is one of the decoys photographed in the truck. KH carved in bottom. 200-300

**96.B CANVASBACK DRAKE** from the Upper Bay in very weathered working paint. Structurally good condition. Retains bottom weight. 100-200

**96.C BLUEBILL HEN** from the Delaware River region in very weathered working paint and structurally good condition. Hollow carved with fluted tail. Paint worn mostly to the wood. Bottom weight. 75-125

**96.D CANVASBACK HEN** by Stoney Point  
Decoys in excellent original paint and unused condition. Retains bottom medallion. Together with a BLUEBILL DRAKE, solid carved in antiqued paint and condition. 75-125





**97. FULL-SIZE AVOCET** by Dick and Tallie Knoer, in near-mint original paint and condition. Deep wing relief carving. Mounted on an abalone shell. Signed and dated 1985. 200-400

**98. SICKLE-BILL CURLEW** by Dick and Tallie Knoer. Deep relief carved wings and split tail. Exceptional feather paint detail. Long curved bill with notched tip. Mounted on a driftwood base. Signed and dated 1984. 300-400

**99. EXQUISITE SHOREBIRD** by Dick and Tallie Knoer. Deep relief carved wings with split tail. Outstanding paint and feather work. Mounted on realistic legs atop an abalone shell. 300-400

**100. PREENING GREATER YELLOWLEG** by Dick and Tallie Knoer. Mint original paint and condition. Deep carved relief wings with bill near breast. Signed and dated 1989 on bottom. Mounted on a cork base. 100-200

**101. PLOVER** in near-mint original paint and condition. Split-tail feather detail with realistic feet mounted on a custom base. 50-75

**102. AVOCET** by Jack Tierney, Stratford, CT. Near-mint original paint and condition. Carved relief wings with painted detail. Mounted atop a custom base. Signed JET under tail. 100-200





**103. OLD SQUAW DRAKE** by John Mullican in excellent original paint and condition. Competition gunning model with relief carved wings. Competition keel with head turned left. Made for the Lem and Steve Shootin' Stool contest. Signed and dated 1976. 100-200

**104. EXCEPTIONALLY WELL-EXECUTED WHIMBREL** by Connecticut carver Keith Mueller. Near-mint original paint and condition. Fine painted feather detail. Excellent elongated split-tail carving with fanned and cupped tail. Mounted on a derelict fishnet float which is encrusted with barnacles and mussels. Signed and dated 4/84 on lower left side. 600-800.

**105. OLD SQUAW DRAKE** by Josef Wooster, Ashley, OH. Excellent original paint and condition. Exceptionally well carved with keep competition keel. Signed and dated 71 on bottom. 200-300

**106. OLD SQUAW DRAKE** by Stephen Brettell in excellent original paint and unused condition. Gunning model with deep ice groove, elongated tail and head turned sharply right. Unweighted. Signed on bottom. 100-200

**107. OLD SQUAW DRAKE** by Keith Mueller. Excellent original paint and unused condition. Working model with ice groove and elongated tail. Solid construction with head turned very slightly left. Signed and dedicated by carver. Retains Mueller weight. 200-400

**108. TWO OLD SQUAW DRAKES** by John E. "Jack" Tierney, Stratford, CT. Both with excellent original paint and structurally sound condition. Both high-head models that retain original tear drop weights and leather riggings. JACK TIERNEY carved in both. 2-300



**109. CANVASBACK DRAKE**, possibly by Taylor Boyd, Perryville, MD, (1856-1944). Retains weathered working paint. Structurally good with hairline checks in head and bottom. Retains weight, staple and rigging ring. WPF carved in bottom. 500-700

**110. CANADA GOOSE** from the Chesapeake Bay, possibly Dorchester County. Good original paint with minor in-use scuffs. Structurally very good with a hairline check in back and small rub to the tail edge. Stylish head is two-piece construction. Weights and rigging have been removed. An early Chesapeake classic goose. 400-500

**111. EARLY CANVASBACK DRAKE** by R. Madison Mitchell, Havre de Grace, MD, circa 1955, from the Murray Mitterhoff estate. Very good original paint showing some in-use rubs and wear. Structurally very good with typical hairline check at mid-neck. Retains bottom weight, rigging staple and ring. Together with an original watercolor with pastel of this decoy. Signed M. Mitterhoff '72 beneath tail. Image size is approximately 10 1/2" x 13 3/4". Framed and glazed. 300-500

**112. CANVASBACK DRAKE** by Carroll "Wally" Algard, Charlestown, MD, (1883-1959). Retains original paint with in-use wear with shot scarring to the right side. Structurally good with typical mid-neck check. Retains bottom weight, ring and staple. 800-1200

**113. EARLY CANVASBACK DRAKE** by Bob McGaw, Havre de Grace, MD. Early working paint with white paint that appears to be original. Rare high-head model in structurally good condition with body checks to sides and length of back. Retains original dog bone weight, ring and staple. Very early McGaw canvasback. 800-1200

**114. CANVASBACK DRAKE** by Will Heverin, Charlestown, MD. Retains excellent paint by Charles Joiner, Chestertown, MD. Structurally sound with typical hairline crack at mid-neck. Retains original weight, ring and staple. Partial hairline check in upper bill. Branded BAYARD on bottom. Signed by Charles Joiner. 500-700

**115. VERY EARLY UPPER BAY CANVASBACK DRAKE** in old working paint and structurally good condition. Sliver of wood missing from underside of bill. Carved with very sharp chines. Retains original bottom weight, rigging staple and ring. 50-75

**116. OVERSIZED CANVASBACK DRAKE** by Sam Barnes, Havre de Grace, MD. Weathered paint, some of which may be original. Structurally very good with minor shot scarring on left side of head. Retains bottom weight, ring and staple. 600-800

117. **CANVASBACK DRAKE** by a member of the Holly family, Havre de Grace, MD. Very old weathered working paint. Structurally good with typical mid-neck check. Some shot scarring. Retains weight and rigging wire. 600-900

118. **CANVASBACK DRAKE** by John "Daddy" Holly, Havre de Grace, MD, (1819-1892). Very rare high-head model with old working paint worn to the wood in areas. Structurally fair with very old neck repair and rub to crest of head. Removable plug on mid-back, possibly indicating its use as a "john" duck. Retains bottom weight, ring and staples. Very rare Holly decoy. 800-1200

119. **CANVASBACK DRAKE** attributed to James Holly, Havre de Grace, MD, (1855-1935). Very old weathered working paint and structurally good condition. Rubs to bill tip. Retains bottom weight, ring and staple. Tight check at mid-neck. 800-1200

120. **CANVASBACK DRAKE** attributed to James Holly, Havre de Grace, MD. Very old working paint worn to the wood in areas. Very good structural condition with typical check mid-neck. Retains bottom weight and rigging staple. 800-1600

121. **VERY EARLY RED HEAD DRAKE** by a member of the Holly family, Havre de Grace, MD, circa 1860's. Very old working paint and structurally good condition with open repaired break at mid-neck and some loss to bill tip edges. Retains bottom weight. For a similar example, see *Decoys of the Susquehanna Flats* by J.E. McKinney, pg. 51. 400-600

122. **BLUEBILL DRAKE** attributed to a member of the Holly family, Havre de Grace, MD. Very good paint, some of which may be original, showing some minor in-use wear. Check and repair to right side of body. Retains bottom weight, ring and anchor. Branded H three times on bottom. Very rare Holly in original paint. 2000-3000





**123. PAIR OF GREEN WING TEAL** by J. Evans McKinney, Elkton, MD. Excellent original paint and unused condition. Both structurally sound with a small area of raised knot on drake's bottom. Both with weights and rigging leather. Both signed and dated 1990 on weights. 400-600

**124. OUTSTANDING PAIR OF GREEN WING TEAL** by R. Madison Mitchell, Havre de Grace, MD. Christmas models with near-mint original paint and excellent facial and bill carving. Both heads turned slightly right. Both with flat bottoms. Unweighted. Signed and dated 1975. 600-900

**125. PAIR OF BLUE WING TEAL** by J. Evans McKinney, Elkton, MD. Excellent original paint and unused condition. Very small flake patch on drake's head. Both with bottom weights and rigging intact. Both signed on weights and dated 1990. 400-600

**126. COOT DECOY** by J. Evans McKinney, Elkton, MD. Near-mint original paint and unused condition. Solid construction. Retains bottom weight, ring and staple. Signed by maker and dated 1988. 300-500

**127. PAIR OF BLUE WING TEAL** by R. Madison Mitchell, Havre de Grace, MD. Excellent original paint and condition. Two small areas of filler loss on top of hen's head. Both with slightly turned heads. Both retain bottom weights, rings and staples. Both signed and dated 1977. 600-900

**128. COOT** by Chandler Sawyer in good original paint with minor wear to bill. Structurally sound. Carved in a swimming position. Signed and dated 12/07. 75-125

**129. BISHOP'S WILDFOWL** by Richard Bishop, copyright 1948. First edition, published and bound in hand-crafted mission leather by Brown and Bigelow. Fine copy with gilt edges. The leather is showing minimal rubbing at corners. 100-200

**130. DECOYS AND DECOY CARVERS OF ILLINOIS** by Paul W. Parmalee and Forrest D. Loomis. First edition is in especially fine condition, protected by heavy brown paper dust jacket. Some very minor foxing to edges. 200-300

**131. WILDFOWL DECOYS** by Joel Barber. Garden City Publishing Company, Garden City, NY, 1937. Generally good condition with some foxing to pages. Some fading and foxing to back cover. Blue cloth with gold etching. 100-200

**132. TWO BOOKS**, consisting of Bishop's Wildfowl, first edition. Published and bound in Mission leather by Brown and Bigelow with gilt edges. Some minor rubs to edges. Together with Frank W. Benson, Master of the Sporting Print, by John T. Ordeman. No. 137 of limited edition, signed by author. Very good condition with original dust cover. 100-200



133. **VERY RARE CANADA GOOSE** by Samuel T. Barnes, Havre de Grace, MD, (1827-1926). Appears to be in original paint with a second coat to white area on underside of tail. Structurally excellent with two neck cracks and a small bit of filler missing from rear of neck. Also a one-inch rectangular knot patch on back. Stick placement hole drilled in bottom. Typical age check running length of bottom. 10000-15000



**134. PAIR OF WIDGEON** by R. Madison Mitchell, Havre de Grace, MD. Outstanding original paint and unused condition. Both structurally sound. Head turned just slightly. Both original bottom weights, rings and staples. Both signed and dated 1976. 600-900

**135. AN EXCEPTIONAL PAIR OF SLEEPING MALLARDS** by R. Madison Mitchell, Havre de Grace, MD. Both in excellent original paint and unused condition. Both retain the original weights, rings and staples. The hen with a hairline check in bottom. 600-900

**136. PAIR OF BLUEBILLS** by R. Madison Mitchell, Havre de Grace, MD. Fine early pair in excellent original paint showing some minor use. Drake with typical hairline crack at mid-neck and knot crack at right side. Hen structurally sound. Both heads slightly turned. Both retain bottom weights, rings and staples. 300-500

**137. PAIR OF MALLARDS** by Bill Collins, Havre de Grace, Md. Near-mint original paint and unused condition. Both heads slightly turned. The hen with hairline check on right side. Both signed and dated 1988. 200-400

**138. BROADBILL DRAKE** by Bob McGaw, Havre de Grace, MD. Excellent Severin Hall paint and structurally very good condition. Typical mid-neck check. Retains original dog bone weight, rigging ring and staple. From the John Schaffer rig. 800-1200

**139. BLUEBILL DRAKE** by Bob McGaw, Havre de Grace, MD, (1879-1958). Excellent paint that may be the original. Structurally good condition with typical mid-neck crack. Retains dog bone weight with ring and staple. This decoy is from the John Schaffer rig. For a similar example see Decoys of the Susquehanna Flats by J.E. McKinney, pg. 67. 800-1200

**140. FINE CANADA GOOSE** by Charles Joiner, Chestertown, MD. Excellent original paint and unused condition. Retains bottom weight, ring and staple. Signed and dated 1983 on bottom. 1400-1800

**141. PAIR OF OUTSTANDING REDHEADS** by Bob McGaw, Havre de Grace, MD. Excellent Severin Hall paint. Both structurally very good with typical hairline checks at mid-neck. Both retain original dog bone weights, rigging rings and staples. Both formerly in the Schaffer rig. For a rigmate pair see Decoys of the Susquehanna Flats by Evans McKinney, pg. 66. 1500-2500

**142. COOT** by R. Madison Mitchell, Havre de Grace, MD. Very good original paint showing some in-use wear. Structurally very good with some grain separation to left breast area. Retains original weight, ring and staple. Branded HWJ on bottom. 200-300

**143. VERY EARLY BLACK DUCK** by R. Madison Mitchell, Havre de Grace, MD. Part of a special order rig in very good original paint showing strong scratch feather pattern. Wear to paint exposing wood in areas. Filled check the length of back. Retains bottom weight and leather rigging thong. Small black circle painted near weight for owner identification. 800-1200

**144. EARLY COOT** by R. Madison Mitchell, Havre de Grace, MD. Excellent original paint and unused condition. The head is turned slightly right. Signed and dated 1961 by Mr. Mitchell. 400-600



**145. PAIR OF CANVASBACK WING DUCKS** by Charles Joiner, Betterton, MD. Excellent original paint and condition. Both signed by the artist on lower left rear of body. 300-500

**146. OUTSTANDING PAIR OF SLEEPING CANVASBACKS** by Charlie Joiner, Chestertown, MD. Both in near-mint original paint and unused condition. Both with original weights, rings and staples. Both signed and dated 2005. 800-1200



**147. MATCHED PAIR OF CANVASBACKS** by Will Heverin, Charlestown, MD. Very old working paint, some of which may be the original. Both in very good structural condition with original weights, rings and staples. Both have glass eyes that were added at a later date. This pair is part of the early Carpenter Point, MD, decoys made by Heverin. 3000-4000

**148. PAIR OF PINTAILS** by R. Madison Mitchell, Havre de Grace, MD. Excellent original paint and unused condition. Structurally very good with typical mid-neck check to neck. Drake's head turned slightly left. Both retain original weights,

rings and staples. A fine early pair of Mitchell pintails. 500-700



**149. GOLDENEYE HEN** by R. Madison Mitchell, Havre de Grace, MD. Near-mint original paint and unused condition. Retains its original weight, ring and staple. Signed clearly on bottom and dated 1974. 200-400

**150. PRESENTATION BLACK DUCK** by Pat Vincenti, Havre de Grace, MD. Near-mint original paint and unused condition. Fine scratch feather paint overall. Retains weight, ring and staple. Signed and dated 1993 on custom base with brass plaque. 100-200

**151. REDHEAD DRAKE** by R. Madison Mitchell, Havre de Grace, MD. Excellent original paint and unused condition. Structurally sound with head turned slightly left. Very fine typical hairline crack at mid-neck. Retains bottom weight and rigging. Signed and dated 1975. 200-300

**152. PAIR OF MALLARDS** by Jim Pierce, Havre de Grace, MD. Excellent original paint and unused condition. Both structurally excellent, retaining bottom weights, rigging rings and staples. An early pair made for gunning. Both stamped JP at rear of weight and P on both sides of weight. 400-600

**153. TWO SHOT SHELL BOXES AND A GROUP OF RELOADING ITEMS**, including a tin of Winchester primers, and two gunpowder tins and a powder measure. Shot shell boxes for 12 ga. The first is a Nitro Club Flying Mallard box. The second is a Peter's Ideal box. Both in good condition with rubs and foxing. See American Waterfowl Decoys, Dr. James McCleery sale, pgs. 222-223. 100-200

**154. VERY EARLY CANVASBACK DRAKE** by R. Madison Mitchell, Havre de Grace, MD. Very early working repaint by Mr. Mitchell in structurally very good condition. A fine example of this maker's work. 200-300

**155. BLACK DUCK** by a member of the Holly family, possibly William Holly, Havre de Grace, MD. Very old working paint with some original still remaining. There is an old repair to lifted grain on bottom and tight check to rear underside and tail top. Retains bottom weight and rigging staple. 600-900

**156. EARLY UPPER BAY**

**CANVASBACK DRAKE** in old working paint and structurally good condition. Old repair to the upper neck. Solid carved with weight, ring and staple and owner's stamp on bottom. Together with an **UPPER BAY CANVASBACK DRAKE** in old working paint. Solid construction. Weight and strap on bottom. Repaired crack to neck. 100-200 One Shown

**157. CANVASBACK DRAKE** by Jess Urie, Rock Hall, MD. Weathered original paint with some touch-up to bottom white area. Some areas of wood showing. Structurally very good with hairline cracks on back and bottom. Retains original weight, ring and staple. 300-400

**158. RARE BLACK DUCK** by Josiah Franklin Travers, Vienna, MD, (1900-1965). Excellent original paint and out-of-rig condition. Raised wing cork body construction with relief-carved wings. Alert position wood head and wood bottom board. Small piece of cork missing from tail. See Chesapeake Bay Decoys by R. Richardson, pgs. 112 and 142. 100-200

**159. EARLY REDHEAD DRAKE** attributed to August George Heinfeld. Very old working paint and structurally good condition. Retains bottom weight, rigging ring and staple. 50-100







**160. PAIR OF BLUE BILLS** by the Elliott Brothers, Easton, MD. Good original paint showing some in-use wear to head and breast. Both with hairline checks. Both with bottom weights, rings and staples. Check to drake's neck. 500-800

**161. RARE CANADA GOOSE** by the Elliott Brothers, Easton, MD. Retains original paint showing signs of paint wear to the head and back. Solid carved with checks on back. Retains original bell weight, ring, staple and screw eye. Very few geese by Bill and Chank are known to exist in original paint. 600-900

**162. PINTAIL DRAKE** from the Crisfield, MD, area. Possibly by Pied Jones. Retains weathered original paint that is worn to the wood in areas. Structurally very good with numerous shot marks on the right side. Bottom weights removed. 300-500

**163. PAIR OF CANVASBACKS** from Crisfield, MD. Carved in the manner of the L.T. Ward Bros. Outstanding early pair of high-head canvasbacks in very good original paint showing back stippling and painted feather work. Very minor in-use wear. Both in very good structural condition. Hen with very old crack repair at the base of the neck. Both heads are turned slightly right. Bottom weights have been removed from both. Both retain hand written notations on bottoms. 1200-1500



**164. FINE PAIR OF RUDDY DUCKS** by Delbert "Cigar" Daisey, Chincoteague, VA. Near-mint original paint and unused condition. Both have fine feather work with good bill carving. Both are branded CIGAR on bottoms. Hand written notation: Delbert Cigar Daisey, Hunting Decoy. See Southern Decoys, pg. 25 for information on this carver. 600-800

**165. AMERICAN OYSTER CATCHER** by Jack Tierney, Stratford, CT. Mint original paint and condition. Relief-carved wings and fine painted feather work and split tail. Mounted on a custom base. 200-300

**166. EARLY BLACK DUCK** by Miles Hancock, Chincoteague, VA. Very good scratch feather paint showing some in-use wear. Structurally very good with a repaired crack in neck and small chip missing from neck base. One eye missing. Retains original Hancock bottom weight and rigging. 300-400

**167. GREY PIGEON** by R. Madison Mitchell, Havre de Grace, MD. Excellent original paint and structurally sound condition. Raised, carved split wings and dropped tail. Signed and dated 1974 by the artist. Mounted on a custom base. 400-600

**168. DOVE** by R. Madison Mitchell, Havre de Grace, MD. Near-mint original paint and unused condition. Signed and dated 1981 by Mr. Mitchell. Mounted on its original custom base with felt bottom. 400-600

**169. PAIR OF RING NECKS** by Bill Schaubert, Chestertown, MD. Near-mint original paint and condition. Both heads slightly turned. Both retain original arrow head weights. Part of the limited edition Nos. 31 of 75. Signed and dated 1995 on bottom. 400-600

**170. EARLY WHIMBREL** by Dave Rhodes, Absecon, NJ. Together with a MINIATURE MALLARD by Bernie Daisey, and a miniature WHITE WING SCOTER by H. Doughty. All in good original paint and condition. Also, a very early engraving by A. Lawson depicting a goose and ducks. 100-200

**171. GROUP OF SIX BOOKS.** American Bird Decoys by William J. Mackey, Jr., first edition, Decoys of the Mississippi Flyway by Alan Haid, first edition, The Art of the Decoy by Adele Earnest, The Outlaw Gunner by Walsh, Decoy Collectors Guide by Sorenson and Wildfowl Decoys by Joel Barber, Dover Publications. All generally good condition. Four with original dust jackets. 100-200

**172. SMALL SHOREBIRD** by Timothy Mulcahy, Berlin, MD. Mint original paint and condition. Relief carved wings. Mounted on a custom base. Signed and dated 1987. 100-200

**173. GROUP OF SEVEN BOOKS.** Factory Decoys by J. Delph, New England Decoys by J. Delph, Chesapeake Bay Decoys by R. Richardson, Duck Decoys by Connnett, Wildfowl Decoys by J. Barber, soft cover, Decoys of the Atlantic Flyway by G. Starr, and Bird Illustrators by Skipwith. All with dust covers. All in good condition. 100-200

**174. COMMON WREN** by Greg Daisey, Chincoteague, VA. Mint original condition with detailed carving and paint. Upswept tail. Mounted on a wood perch. Signed and dated 1978 on bottom. 50-75

**175. THREE BOOKS** consisting of American Bird Decoys by William F. Mackey, Jr., first edition with dust jacket and protective cover. American Waterfowl by Phillips and Lincoln, first edition, 1930, and Wildfowl Decoys by Joel Barber, soft cover. Also, a group of decoy brochures and catalogs. All in good condition. 100-200



176. **OUTSTANDING BLACK DUCK** by Ira Hudson, Chincoteague, VA., circa 1930s. Excellent fine feather paint showing some very minor paint shrinkage to back of head crest. Head has fine scratch feather work. Full-bodied balsa carving with ice groove on back and broad carved fluted tail. Small dent on back and a small dent at right tail edge. Very tight hairline crack in center of back. This outstanding decoy retains pad weight and original rigging leather strap. Appears to be in unused condition. Paint patterns are referenced in Ira D. Hudson by H. Stansbury, pg. 59, as being Hudson's finest effort. See Decoy Magazine, Year In Review 2006, pg. 23, for an almost identical example. 15000-18000





**177. REDHEAD DRAKE WING DUCK** by Purnell Curles, Churches Island, NC. Good original paint showing in-use wear. Structurally very good with typical mid-neck check and hairline body checks. 100-200

**178. REDHEAD DRAKE** by W.L. Curles, Churches Island, NC. Excellent original paint and unused condition. Unrigged. Minor rubs to paint surface and chines. Similar to style of Ned Burgess. 100-200

**179. BLACK DUCK**, possibly Churches Island, NC. Canvas and wire frame construction. Paint appears to be original with feather work to body. Structurally good with crack at mid-head. Unweighted. 200-300

**180. EARLY CANADA GOOSE**, probably Churches Island, NC. Very good original paint with a canvas-covered wire- framed body showing wear to canvas. Atop a wood bottom board. May have been used as an ice or land decoy. Unrigged. Hairline crack in left side of head. 100-200

**181. FOUR SHOREBIRDS** consisting of a sleeping flatty, a sanderling, a greater yellowleg and a kildeer. All in very good original paint with some scuffs. All with placement sticks. 75-125 One Shown

**182. BLUEBILL DRAKE** by noted Maryland maker Charlie Bryan in excellent original paint showing very minor rubs. Structurally excellent condition. Good feather work and stippling. Bottom weight and rigging weight removed. Signed on bottom and dated 1964. 300-500

**183. MERGANSER HEN** from Chincoteague, VA. Excellent original paint and unused condition. Structurally sound. Paint shows some staining and very minor rubs. Folky head carving with leather crest and elongated tail. 100-200

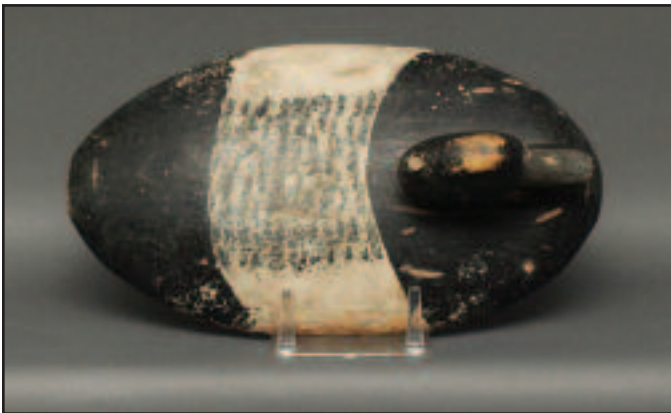
**184 PAIR OF RED-BREASTED MERGANSERS** by Mark A. Daisey, Chincoteague, VA. Near-mint original paint and unused condition. Detailed carving and fine feather detail paint. Both with carved wing tips and spread, fluted tails and flowing crests. Heads turned left. Signed and dated 1989. 200-400

**185. EXTREMELY RARE AND POSSIBLY UNIQUE PINTAIL DRAKE** similar to the work of Bob Morse, Churches Island, NC, circa 1930. Retains excellent original paint and is in structurally good condition. Check to lower back of the neck and two very tight hairline checks to back. Some wear to paint on bill and breast. Solid carved with foundry weight removed. Retains leather rigging thong. Examples of this maker's work can be found in Southern Decoys by H. Fleckenstein, Jr. This pintail drake is in original untouched condition with fine painted feather work. Outstanding in all respects. 8000-12000





**186. EARLY AND EXCEPTIONAL WOOD WING DUCK**, probably North Carolina. Excellent original paint showing in-use wear to the edges, right side and head crest. Bottom may be a second coat of gray paint. Structurally very good with hairline cracks to the head and a chip missing from right underside of bill. Several shot marks to body. Extremely rare early decoy. 800-1200



**186A. EARLY CANADA GOOSE** by Charles Birch, Willis Wharf, VA. Retains very old working paint and is structurally very good with a small space where the neck meets the body. Bottom weight removed some time ago. Head on a shelf raised from the body. Original pinned bill. For a similar example see *Southern Decoys* by H. Fleckenstein, Jr., page 135, Plate 243. 1200-1500



**187. DOWNY WOODPECKER** by Mary M. Worrilow. Mint paint and condition. Outstanding detailed carving and exceptional blended feather paint. Perched on a branch atop a custom wood base. Signed and dated 5/81. 200-300

**188. TWO TUFTED TITMICE** by Jack and Betty Holt, Wilmington, DE. Mint paint and condition. Excellent detailed feather carving and fine blended paint work. The pair mounted on a branch with one titmouse holding a pumpkin seed in its beak. Signed and dated 1979. 200-300

**189. AN EXCEPTIONAL DOWNY WOODPECKER** by Ernie Muehimatt. Mint condition with extremely fine and detailed carved and painted feather work. Perched on wood limb mounted on custom base. Signed and dated 12/80. 300-500

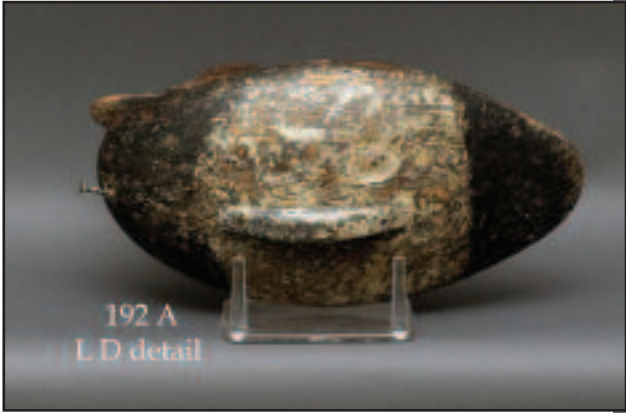
**190. SLEEPING SHOREBIRD** by Dick and Tallie Knoer. Mint original paint and condition. Relief-carved wings and split tail. Fine detailed painted feather work. Glass eyes slightly closed. Signed and mounted on cork base. 75-125

**191. RUDDY TURNSTONE** by Jack and Betty Holt, Wilmington, DE. Near-mint original paint and condition. Elaborate feather carving overall. Raised crossed split wing tips. An exceptional work by this world champion couple. Head turned left. Signed and dated 1990. 300-500

**192. FINE CARVING OF A SANDPIPER** by Walt Ebersole, Bellport, NY. Near-mint original paint and condition. Very fine painted feather work. Relief-carved wings with raised tips. Glass eyes. Mounted on driftwood base. Signed and dated 1987. 75-125



**192A. EXTREMELY RARE AND EARLY REDHEAD DRAKE** by Lee Dudley, Knotts Island, NC. Retains very old working paint and is in structurally fine condition. Bill repair by Cameron McIntyre. This decoy is part of the famous rig used at the Pocahontas Gun Club and is probably part of the rig used by the club secretary. This fine decoy has a very fine crisp LD brand. This decoy is the rig mate to the Dudley canvasback drake sold March 28, 2008, Lot 114. For literature see Southern Decoys by H. Fleckenstein, Jr. This decoy has been exhibited at the Baymen's Museum, Tuckerton, NJ, the Ward Museum, Salisbury, MD, and most recently at the Upper Bay Museum, Havre de Grace, MD. 15000-25000





**193. ONE-QUARTER SIZE PINTAIL DRAKE** by world championship carver Tan Brunet. Mint condition with extremely fine carved feather detail and exceptionally detailed painted feather work. Raised wing tips, elongated sprig tail. Head turned slightly left. An exceptionally well-executed carving that has dedication and is dated 5/21/86. Accompanied by a signed and dated wood base. 600-800

**194. MINIATURE PINTAIL AND MALLARD DRAKE** by Charlie Berry, Salisbury, MD. Both in near-mint paint and condition. Both rigged as decoys with weights and keels. Mounted on custom stands. Both signed and dated 1987 on bottoms. 100-200

**195. PAIR OF ONE-THIRD SIZE GREEN WING TEAL** by Tom Pitzen, carved in the Mason style. Mint original paint and condition. Mounted on a custom base. Signed by the maker. 100-200

**196. ONE-QUARTER SIZE CANVASBACK DRAKE** by world champion carver Tan Brunet. Mint original condition. Extremely fine detail to carving and painted feather work. Mounted on custom base that bears artist dedication and is dated 1987. 600-800

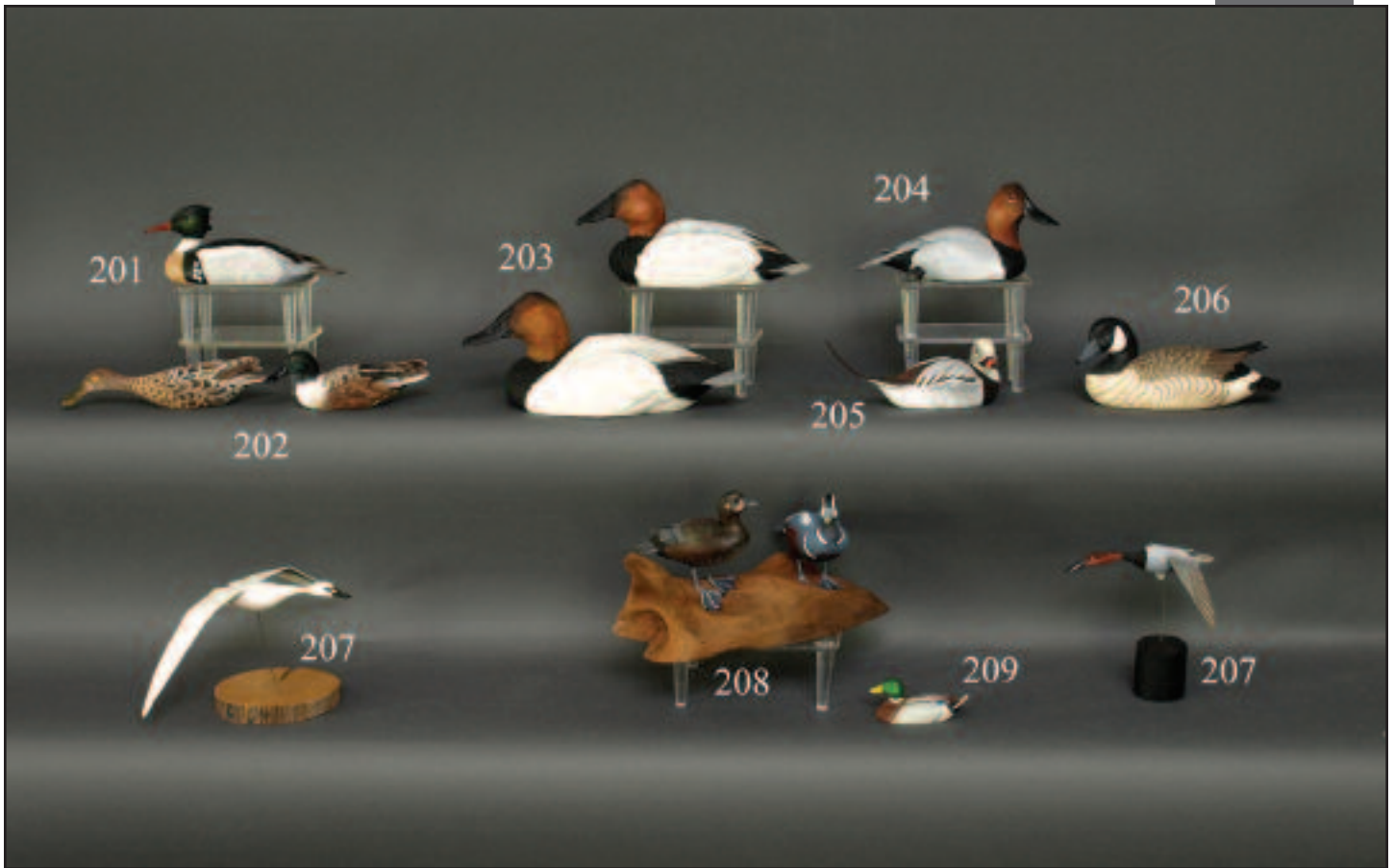
**197. MINIATURE AVOCET** by Manfred K. Scheal. Mint original paint and condition. Mounted on a driftwood base atop a custom base. Signed and dated 1980. 200-300

**198. MINIATURE FLYING CANADA GOOSE** by Paul Nock. Mint paint and condition. Mounted on a wood base. Together with a flying SEA GULL in mint paint and condition. Mounted on a wood base. 75-125

**199. MINIATURE BLUE HERON** by Manfred Scheal. Near-mint original paint and condition. Mounted on a driftwood base. Signed and dated 1987. 100-200

**200. MINIATURE AVOCET** by W. Reinbold in very good original paint and structurally good condition with front of bill missing. Detailed raised carved wings. Mounted on a driftwood base with wire legs. Signed on bottom. 50-100





**201. MINIATURE RED-BREASTED MERGANSER DRAKE** by Norm Walsh. Mint paint and condition. Detailed carving overall with raised crossed wing tips. Fine delicate paint pattern with head turned slightly left with flowing crest. Overall length is approximately 5 3/4". Signed and dated 1979. 100-200

**202. EXCEPTIONAL PAIR OF MINIATURE SHOVELLERS** by C.W. Miller, Westport, ONT. Mint original paint and condition. Highly detailed feather work and especially fine paint. Extraordinary in all respects. 400-800

**203. TWO ONE-QUARTER SIZE CANVASBACK DRAKES** by Dan Brown. Both highly carved with excellent detail. Near-mint original paint. Both heads turned slightly left. Both signed with dedication. One is dated 1988, the other is dated 2000. 300-500

**204. MINIATURE CANVASBACK DRAKE** by Paul Nock. Mint original paint and condition. Exceptional carving and paint with raised wing tips and fluted tail. Signed and dated 1982. 100-200

**205. MINIATURE OLD SQUAW DRAKE** by Ken Scheeler in mint original paint and condition. Highly detailed feathering with head turned sharply right. Signed and dated 1982 on bottom. 100-200

**206. MINIATURE CANADA GOOSE** by Knute Bartrug, Salisbury, MD. Carved in the Crisfield style with raised relief wings and crossed wing tips. Mint original paint and condition. Signed on bottom. 100-200

**207. TWO FLYING MINIATURES** by Paul Nock, consisting of a CANVASBACK DRAKE and a SWAN. Both in near-mint original paint and condition. Both mounted on a signed bases. 100-200

**208. PAIR OF MINIATURE HARLEQUINS** by Charlie Berry, Salisbury, MD. Mint original paint and condition. Both with carved wing and tail feathers. Both mounted on a driftwood base that is signed and dated 1988. 100-200

**209. MINIATURE MALLARD DRAKE** by Dan Brown in mint original paint and condition. Overall length is 2 1/2". Signed and dated 1995. 50-100

210



**210. ONE-THIRD SIZE PINTAIL**

**DRAKE** by Paul Nock, in mint original paint and condition. Highly decorative carving mounted on a sand base. Signed by carver. 200-400

211



**211. MINIATURE TURKEY** by Harry Vreeland in mint original condition. Exquisitely carved and painted rendition with multi-layered feathers over the body, wings and tail displaying iridescence inherent on Tom turkeys. Atop realistically formed feet and mounted on woodland base. Signed and dated '79 with dedication on bottom. 400-600



**212. AN EXCEPTIONAL AND UNIQUE BLACK CROWNED NIGHT HERON** by Peter Kaune. Mint original condition. This outstanding example of this artist's work in elaborately carved and placed in a marsh setting. Signed and dated 5/86 on bottom. Enclosed in a glass display dome. 500-700

**213. COCK PHEASANT** by Harry Vreeland in mint condition. This extraordinarily fine carving depicts a calling pheasant with spread wings and fanned tail. Carved and painted feather work overall. Realistically formed feet descend to custom base. Signed and dated '78. Enclosed in a glass display dome. 600-900

**214. MINIATURE SHRIKE** by Peter Kaune. Mint condition with extremely fine carving and painted feather work. The calling bird is mounted on a branch with grasshopper on lower limb. Mounted atop a custom base. Signed and dated 7/87. Enclosed in a glass display dome. 400-600





**215. LOGGERHEAD SHRIKE CHICK** by Don Briddell, Mt. Airy, MD. This world class carving is in mint condition and part of a limited edition group carved by the artist in 1983. The entire piece is, including simulated rocks, carved from Vermont bass wood. This rare example of this artist's work is accompanied by a certificate of authenticity. The carving is executed with minute detail to all of the elements. Encased in a glass display dome. Signed and dated on bottom of work. Edition No. 8. 800-1200

**216. MINIATURE OWL** by Richard Palmer. Highly detailed carving perched on a limb in mint overall condition. Carved with multiple overlapping feathers over the entire piece. Split crossed wing tips and tail. Fine paint detail. Outstanding work from this world-class carver. Signed and dated 1982 on perch. Enclosed in glass display dome. 600-900



**217. DECORATIVE CARVING OF A CARDINAL** by Andy Wynowski. Mint original paint and condition with detailed carving and painted feathering. Wings slightly raised. Head turned slightly right. Mounted atop a wood perch on custom base. Signed and dated Nov. '88. 200-400

**218. ONE-HALF SIZE SNOWY EGRET** by G.P. Trout in excellent original paint and condition. Detailed carved and painted feather work. Raised wings with head turned slightly right. 100-200

**219. MINIATURE DECORATIVE CORMORANT** by New Jersey carver Joan Seibert in mint original paint and condition. Fine relief and detailed wing carving. Broad fluted tail. Head sharply turned left and upward. Mounted atop a driftwood base. Signed and dated 1980. 100-200



**220. AN EXQUISITE PAIR OF BUFFLEHEADS** by A.G. Evans in mint original paint and condition. Very detailed painted feather work and detailed carving overall. Deep wing carving with crossed raised tips and broad fluted tail. Both heads slightly turned with good bill carving. Both with incised signatures and dated 1996. 400-600

**221. BUFFLEHEAD DRAKE** by Norm Walsh in near-mint original paint and condition. Fine competition gunning model with outstanding feather work and fluted tail. Hollow carved with head turned smartly right. Retains bottom keel. Signed by artist. 200-300

**222. FINE PAIR OF BUFFLEHEADS** by Del Herbert in mint original paint and condition. Both with relief carved wings with crossed raised tips. Exceptional painted feather work. Both with fine bill carving. Both heads turned slightly left. Signed. 200-300

**223 BUFFLEHEAD DRAKE** by Donald K. McKinlay in near-mint original paint and condition. Fine feather detail and crossed, raised wing tips. Hollow carved with head in restful tucked position. Signed on bottom twice and dated VIII IV. 200-300

**224. DOVE** by Manfred Scheal in excellent original paint and condition. Relief-carved wings and extended raised tail feathers. Head turned slightly left. M.S. carved in bottom. Mounted on custom base. 100-200

**225. BUFFLEHEAD DRAKE** by Ken Scheeler in excellent original paint and condition. Shooting model with keel removed. Signed on bottom and dated 1982. 100-200

**226. FULL-SIE WHISTLING SWAN** by C.E. Franti. Excellent original paint and condition. Relief-carved wing detail and gracefully curved head. Excellent in all respects with fine paint detail and carving. 300-500

**227. FULL-SIE WHISTLING SWAN** by C.E. Franti. Excellent original paint and condition. Relief-carved wing detail and gracefully curved head. Excellent in all respects with fine paint detail and carving. 300-500

**228. WIDGEON DRAKE** by C.W. Miller, Westport, ONT. Mint original paint and condition. Exceptionally detailed carving with fine feather work. Deep relief-carved wings and finely carved primary and secondary feathers. Head turned slightly right. Keel removed. Signed on bottom. 600-900

**229. RINGBILL DRAKE** by Norm Walsh in mint original paint and condition. Gunning competition model with excellent feather detail and raised, crossed wing tips. Deep competition keel. Hollow carved. Signed on bottom. 200-300



**230. MALLARD HEN** by Del Herbert in mint original paint and condition. Highly detailed feather work. Raised carved wing tips. Head turned slightly left. Signed with notation #97-178. 200-400



**231. SWIMMING**

**BRANT**, Long Island, NY, in very old working paint with some original showing. Carved root head with solid body. Retains original weights. A very early decoy. 200-400

**232. DIMINUTIVE BROADBILL DRAKE**

by a member of the Verity family, Long Island, NY. Original paint with cork body construction. Small piece of cork missing from lower breast. Head fastened with wooden pegs and iron nails. Retains weight and rigging leather. 200-400

**233. BRANT** attributed to the Ackerly family, Long Island, NY, circa 1870. Very old weathered paint, some possibly the original. Very good structural condition. Fine hairline cracks. Solid carved. Retains mule shoe weight. Branded R.J. For additional example, see *The Great Book of Wildfowl Decoys* by J. Engers, pg. 108. 800-1200

**234. VERY EARLY MERGANSER** by the Verity family, Long Island in good original paint with possible touch up. Cork body construction joined with wood pegs. Structurally very good. Head fastened with wood pegs. Retains original weights fastened with wood pegs. Some shot scarring to head and body. An outstanding early Long Island merganser. 500-700

**235. EARLY AMERICAN MERGANSER HEN** by a member of the Verity family, Long Island, NY. Very old working paint with some original paint showing. Solid carved, in structurally good condition. Splinter missing from bill top. Chip to right side of head and lower neck. Retains original weight. Some overall shot scarring. A very early Long Island gunning decoy. 500-700

**236. MERGANSER HEN** by a member of the Verity family, Long Island, NY. Retains what appears to be weathered original paint worn to the wood in areas. Structurally very good condition with some shot scarring overall. Carved eyes. Retains two bottom weights that appear to be original. CV carved in bottom. For reference see *The Great Book of Wildfowl Decoys* by J. Engers, pgs. 98-109. 1500-2500

**237. BLACK DUCK**, possibly Long Island, NY, in original paint. Cork body construction and bottom board. Structurally very good. Retains bottom weight. 75-125

**238. VERY EARLY LONG ISLAND BLACK DUCK**, similar to the work of William Bowman. Pieced cork body construction joined together with wooden pegs. Head with original paint and shoe-button eyes held in place with pegs. Bottom weight and original thong held together with wood pegs. Very early example of Long Island artistry. 400-800



**239. FINE PORTRAIT** by Judith R. Dickinson of Hurley Conklin seated at home holding his trademark carving of a Red-Breasted Merganser drake. Oil on canvas. 19 1/2" x 15 1/2" image size. Custom frame. Together with the RED-BREASTED MERGANSER that Hurley Conklin is holding in the portrait. The decoy is in excellent original paint and unused condition. Branded H. CONKLIN. 1200-1500





**240. PLOVER** by Hurley Conklin, Manahawkin, NJ. Excellent original paint and structurally sound condition. Carved with split tail. Signed and dated 9/27/89 on bottom by Hurley Conklin. Mounted on placement stick.

**241. OVERSIZED CROW** by Hurley Conklin, Manahawkin, NJ. Excellent original paint and structurally sound condition. Eye screw in back for use as a hanging decoy. Retains original glass eyes. Signed on bottom. 300-400

**242. YELLOWLEG** by Hurley Conklin, Manahawkin, NJ. Original antiqued paint and structurally sound condition. Carved in a running pose. Branded H.C on bottom. Mounted on a Conklin stand. 200-300

**243. FINE CURLEW** by Hurley Conklin, Manahawkin, NJ. Near-mint original paint and unused condition. Hollow carved with split tail. Branded H.C on bottom. Mounted on a signed Conklin base. 300-400

**244. CURLEW** by Hurley Conklin, Manahawkin, NJ. Excellent original antiqued paint and structurally sound condition. Hollow carved with split tail. Branded H. CONKLIN on bottom. 300-500

**245. CANADA GOOSE** by Hurley Conklin, Manahawkin, NJ. Excellent near-mint original paint and unused condition. Structurally excellent. Carved in a snakey-head position. Deep ice groove and carved wing tips. 600-900

**246. EGRET** by Hurley Conklin, Manahawkin, NJ. Excellent original paint and structurally sound condition. Deep ice groove and snakey head. Signed by carver on underside of decoy. Mounted on a driftwood base. 200-300

**247. CURLEW** by Hurley Conklin, Manahawkin, NJ. Excellent original paint with areas of sap bleed. Excellent structural condition with split carved tail. Mounted atop a Conklin base, signed by the carver. 200-300





**248. RARE EARLY PAIR OF WOOD DUCKS** by Hurley Conklin, Manahawkin, NJ. Both in near-mint original paint and structurally fine condition. Both hollow carved with deep ice grooves and inlet bottom weights. Both rigged for use, but appear to be unused. Drake is branded twice on bottom. The hen is branded once. Both have head crest carving. An outstanding and exceptional pair of decoys. 1000-1500

**249. BLACK-BACK GULL STICKUP** by Hurley Conklin, Manahawkin, NJ. Excellent original antiqued paint. Hollow carved with long, raised split wing tips. Excellent bill carving and detail. Some minor seam separation to bottom. Branded H.C. Mounted atop a lobster pot buoy. 400-600

**250. RACEY PAIR OF AMERICAN MERGANSERS** by Hurley Conklin, Manahawkin, NJ. Near-mint original paint and unused condition. Both hollow with carved wing detail. Both with inlet bottom weights. H. CONKLIN branded in bottoms. Both with heads slightly turned. 600-800

**251. PAIR OF HOODED MERGANSERS** by Hurley Conklin, Manahawkin, NJ. Near-mint original paint and unused condition. Both hollow carved with ice grooves and carved wing tips. Both heads slightly turned. Both with inlet bottom weights and rigging thongs. Both branded H. CONKLIN. 500-800

**252. PAIR OF BLUE WING TEAL** by Hurley Conklin, Manahawkin, NJ. Near-mint original paint and unused condition. Hollow carved with relief-carved wing tips. Both with heads slightly turned. Both with round inlet bottom weights. Both with crisp H. CONKLIN brand. 500-700

**253. VERY EARLY WIDGEON DRAKE** by Hurley Conklin, Manahawkin, NJ. Appears to be in good original paint and structurally sound condition. Pre-brand model with pad weight and leather rigging. Marked H. CONKLIN on bottom. 200-300

**254. MALLARD HEN** by Hurley Conklin, Manahawkin, NJ. Early pre-brand model with especially fine near-mint paint and condition. Hollow carved with deep ice groove. Head turned slightly left. Round inlet bottom weight. 300-400





**255. PAIR OF RED-BREASTED MERGANSERS** by Hurley Conklin, Manahawkin, NJ. Near-mint original paint and unused condition. Both hollow carved. The hen is in a sleeping position. The drake has deep ice groove. Both with carved wing tips. Both with inlet bottom weights and rigging strap. Both branded H. CONKLIN on bottoms. 600-800

**256. PINTAIL DRAKE** by Hurley Conklin, Manahawkin, NJ. Excellent original paint and unused condition. Hollow carved with head turned slightly left. Deep ice groove, carved wing tips and elongated tail. Nice full body with inlet bottom weight. Branded H. CONKLIN on bottom. 300-400

**257. FINE PAIR OF MALLARDS** by Hurley Conklin, Manahawkin, NJ. Near-mint original paint and unused condition. Fine painted feather detail and stippling. Very full bodies. Both with deep ice grooves and carved wing tip detail. Both with inlet bottom weights. Both branded H. CONKLIN on bottoms. 500-700

**258. RARE PAIR OF PINTAILS** by Hurley Conklin, Manahawkin, NJ. Near-mint original paint and unused condition. Both hollow carved with deep ice grooves. Carved wing detail. Drake with elongated tail. Both with full round bodies. Inlet bottom weights and rigging thongs. Both branded H. CONKLIN. 600-800

**259. RED-BREASTED MERGANSER** by Hurley Conklin, Manahawkin, NJ. Antiqued original paint. Solid carved. Retains bottom pad weight and rigging leather. HC carved in weight. 200-300

**260. PAIR OF PINTAILS** by John Hamilton, Cedar Run, NJ. Both in excellent original paint and unused condition. Very full-bodied, hollow-carved decoys. The drake with elongated split tail. Both have inlet bottom weights. Both branded J HAMILTON. 500-800

**261. PAIR OF HOODED MERGANSERS** by Hurley Conklin, Manahawkin, NJ. Excellent original paint and structurally sound. Two small flecks of paint missing on left side of drake. Hollow carved with heads slightly turned. Nice high crests. Carved wing tips and round inlet bottom weight. Branded H.C. on bottom. 200-300





**262. PAIR OF WOOD DUCKS** by John Hamilton, Cedar Run, NJ. Excellent original paint and unused condition. Drake with an open calling bill. The hen with a fine crack in the bill. Both hollow carved with heads slightly turned. Bottom weights, branded. 200-400

**263. UNIQUE CARVED OCEANIC WHITE-TIP SHARK** by Anthony Hillman in mint original paint and condition. Mounted on a custom presentation base with brass plaque. Notation on bottom: "Oceanic Whitetip 1995. This is my original carving for 'Carving Sharks'. Dover Pub. Co. 1996." 100-200

**264. GREAT WHITE HERON** with George Strunk body and Hand Mears head and paint. Good original paint with some areas of grain showing and some minor nicks. Mounted on a custom base. 200-300

**265. MINIATURE SNEAK BOX** by noted New Jersey carver Anthony Hillman and Harry V. Shourds. Excellent original condition. Carved with side boards and spray screen. Includes a pair of oars and six finely carved miniature Canada geese. Signed on bottom by Harry V. Shourds and Anthony Hillman. 100-200

**266. EARLY SHOREBIRD**, possibly a Stilt. Good original paint showing crazing and wear to back and head. Probably New Jersey. The bill appears to be a replacement. 100-200



**267 LEAST SANDPIPER** by Thomas W. Carlock, Fair Haven, NJ. Outstanding near-mint original paint and fine structural condition. Exceptionally well-painted wing detail. Finely carved wings and fluted tail. Running position with head turned slightly left. Mounted on old dock spike driven through a piece of driftwood. All atop a custom base with brass name plate. Signed and dated 1973 on bottom. 500-800

**268. GREATER YELLOWLEG** attributed to Lloyd Johnson, Bay Head, NJ. Early gunning model in very good original paint. Structurally very good condition with the very tip of bill chipped. Raised notched "V" tail carving. 400-600

**269. RARE EARLY GREEN WING TEAL DRAKE** by Bill Beardsley, Silverton, NJ. Excellent original paint and unused condition. Shows very minor shelf rubs. Relief-carved heart-shaped wing detail. Scratch-feather painting on body. Head is turned very slightly right. Retains

**269A** Rigging strap. Signed on bottom. 200-300

**270. RARE DOVE CARVING** by Davidson Hawthorne, Seaford, DE. Near-mint original paint and structural condition. Very fine painted feather detail and carved, crossed wing tips. Relief-carved wing detail. Mounted on a custom base. Signed by artist on bottom. 300-500

**271. SLEEPING SWAN** in excellent original paint with some very minor flaking to two filler holes and neck joint. Structurally excellent with a hairline check the length of back and left side. Retains old bottom board. 400-600



**272. RARE AND FINE PAIR OF BOB WHITE QUAIL** by Lloyd Johnson, Bay Head, NJ. Both with excellent original feather work paint. The hen with paint crazing typical of many of Lloyd Johnson's earlier works. Crazing present on head, breast and tail areas of the hen. Excellent carved wing detail to both. Both with relief carved wings. The male with very minor crazing to breast and tail areas. Both mounted on realistically formed legs atop burl wood bases. Both signed on bases and dated 1960. 2000-4000

**273 ORIGINAL LANDSCAPE** by Gerard Rutgers Hardenbergh, Bay Head, NJ, showing a marsh scene with seven mallards taking off, tall grasses with placid water and hint of sunrise in distance. Image size 8 1/2" x 16 1/4". Professionally framed, glazed and matted. 1500-2000

**274. EARLY BUFFLEHEAD DRAKE** probably by Lloyd Johnson, Bay Head, NJ. Very good original paint showing some crazing to the breast, head crest and wing feathers and underside of tail. Structurally very good with the head turned sharply right. Carved wing detail and fluted carved tail. Notation on bottom: "Barry Johnson Bufflehead, George W. 1/60." 300-500



**275 CANADA GOOSE** by Leonard Friscia, Tinton Falls, NJ. Excellent original paint and structurally fine condition. Large full body decoy with a high head position. Fine paint blending with painted bar detail to sides. Retains original bottom pad weight and leather rigging. L FRISCIA stamped on bottom. 300-500

**276 HISSING CANADA GOOSE** by Jamie P. Hand, Goshen, NJ. Excellent original paint showing some shelf scuffs. Structurally good condition. Two hairline checks in body. Hollow carved with inlet bottom weight. Branded on bottom. 200-300

**277 CANADA GOOSE**, probably New Jersey, in old working paint and fair structural condition with old repairs to head. Retains bottom weights. 100-200

**278 EARLY CANADA GOOSE** by H.V. Shourds, Tuckerton, NJ. Very old working paint, some of which is worn to bare wood. Hollow carved with a very full round body. Classic Shourds head. Retains Shourds bottom weight with a bottom pad weight removed. Fine New Jersey goose. 1800-2200

**279. PREENING BLACK DUCK** by Liz Beth in antiqued original paint and structurally fine condition. Deep carved wing separation and tail detail. Unrigged. Signed and dated 1/2003. 100-200





**280. TWO FINE BROADBILLS** by “Dipper” Ortle, Pt. Pleasant, NJ. Near-mint original paint and unused condition. For similar examples, see *New Jersey Decoys* by Henry Fleckenstein, Jr., page 64. 200-300

**281. BLACK DUCK** by Gene Hendrickson, Lower Bank, NJ. Original paint and structurally good condition. Some seam separation. Hollow carved with inlet bottom weights. Fine paint ticking to head. 200-300

**282. RARE MALLARD DRAKE** attributed to William Corson, Corson's Inlet, NJ. Appears to be very good original paint showing some in-use wear, worn to the wood in areas. Very good structural condition. Hollow carved with applied bottom pad weight and rigging. It is very rare to find an early New Jersey mallard in original paint. An outstanding early New Jersey example. 1200-1500

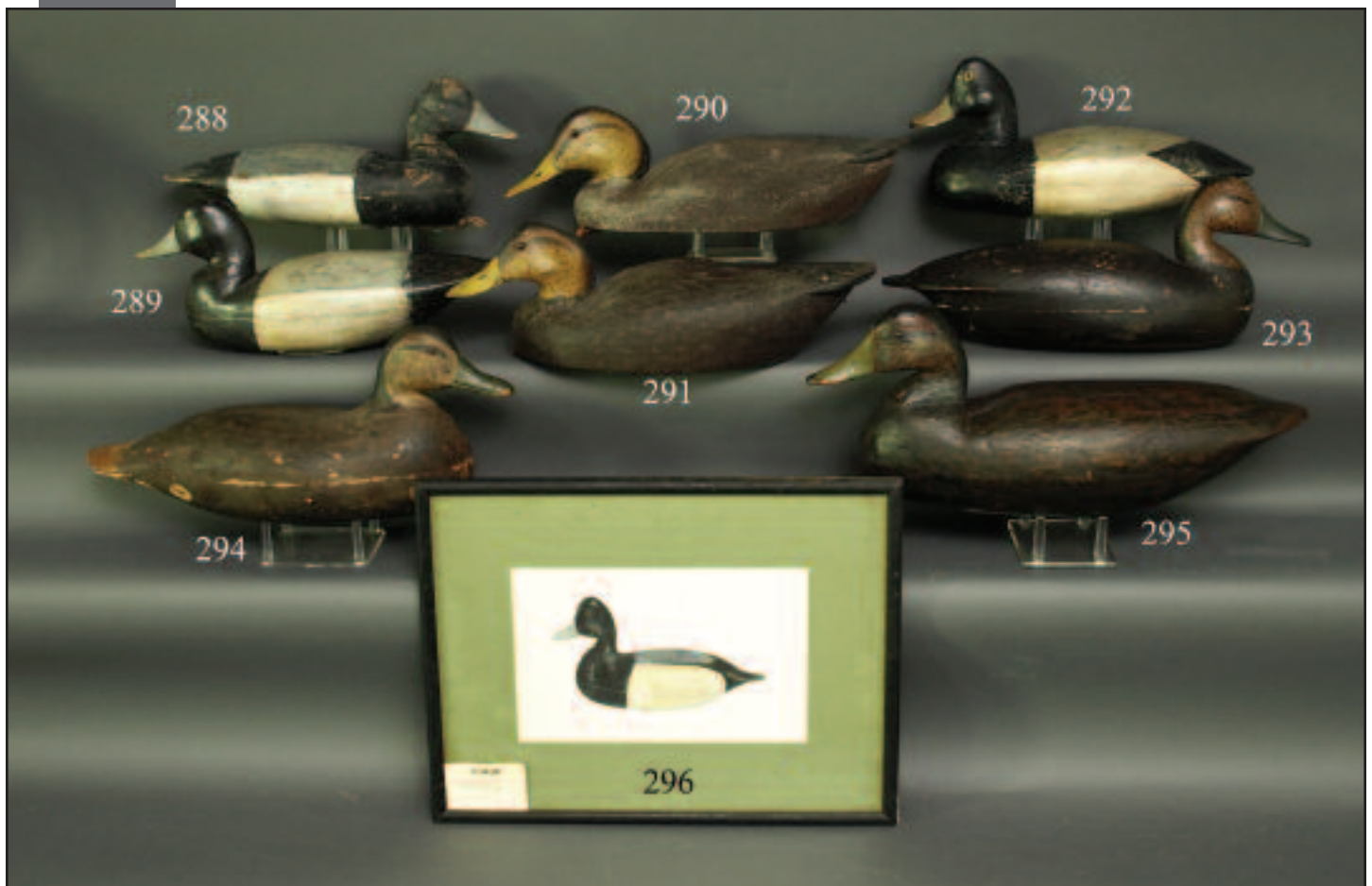
**283. TWO EARLY NEW JERSEY BLACK DUCKS**, both in old working paint. Both hollow carved. Both retain bottom weights and rigging. 100-200 One Shown

**284. GROUP OF FOUR DECOY HEADS** consisting of an oversized black duck head signed by John McLoughlin, a mallard drake head on plaque, a black duck head and a old brant head, possibly H.V. Shourds. All in excellent condition. 100-200

**285. BLACK DUCK** by H.M. Shourds, Ocean City, NJ. Old working paint and structurally good condition. Separation to body seam. Old repair at mid-neck. Inlet bottom weight. 200-300

**286. RARE SWIMMING BLACK DUCK** by John Updyke, Green Bank, NJ, circa 1930. Excellent original flocked paint. Structurally excellent. Hollow carved with inlet bottom weight and leather thong. See *New Jersey Decoys* by H. Fleckenstein, Jr., pg. 56, plate 76 for rig mate. 600-900

**287. EARLY BLACK DUCK** from Barnegat Bay, NJ, in weathered original paint showing scratch feather painting. Structurally very good. Hollow carved with bottom weight and rigging removed. 150-250



**288. EARLY BLUE BILL DRAKE**, Barnegat Bay, in old working paint. Hollow carved, structurally good condition. Old repair at mid-neck. Retains bottom pad weight. C CHAFEY brand. Together with a BLUE BILL DRAKE, Mason Decoy Company, in old working paint. 75-125 One Shown

**289. TWO BARNEGAT BAY BROADBILL DRAKES** both with very old working paint. Both structurally very good with neck repairs. Hollow carved. One with bottom pad weight, the other with inlet bottom weight and stamped SGH three times. 200-300 One Shown

**290. BLACK DUCK** attributed to William Cranmer, Beach Haven, NJ. Excellent original flocked paint and unused condition. Hollow carved with ice groove in back. Ticked head turned slightly left. Branded WH CRANMER on bottom. Very early decoy by this maker. 400-800

**291. BLACK DUCK** attributed to Franklin Reeder, Cedar Run, NJ. Excellent original paint and unused condition. Retains original flocking with feather design on back. Head retains ticking and is turned slightly left. Hollow carved and unweighted. 400-800

**292. BROADBILL**, Barnegat Bay, NJ. Very old working paint and structurally sound condition. Hollow carved with the bottom weight removed. 100-200

**293. RARE BLACK DUCK** by Lloyd Parker, Parkertown, NJ, (1859-1921). Excellent original paint and structurally fine condition. Partial hairline crack at mid-neck and a small splinter missing at lower left side. Paint shows some minor in-use wear. Hollow carved with inlet bottom weight. Stamped SGH twice on bottom. Lloyd Parker decoys in this fine condition are rarely, if ever, found. 2500-3500

**294. BLACK DUCK** attributed to Clark Madara, Pittman, NJ. Old flocked paint that appears to be original but worn to wood in areas. Hollow construction, structurally good condition. 100-200

**295. BLACK DUCK**, possibly Joe King, Manahawkin, NJ. Very weathered paint with scratch feather paint visible. Hollow carved with deep ice groove. Structurally very good. Large weight on bottom. Tack eyes. 200-300

**296. THREE ORIGINAL WATERCOLORS** by Murray Mitterhoff. The first is a redhead by the Stevens Decoy Co. The second is a Shourds broadbill and the third is a bufflehead drake. All framed and matted. Two are glazed. All signed by artist, lr. 100-200



297. **BRANT** Barnegat Bay, NJ. Very early model with dowelled construction. Very early working paint and fair structural condition. Inlet bottom weight. 200-300 Not Shown

298. **EARLY BLACK DUCK** by Gene Hendrickson, Lower Bank, NJ. Old working paint and very good structural condition. Old neck repair. Hollow carved with inlet bottom weight. 75-125 Not Shown

299. **GOLDENEYE DRAKE** attributed to Charles Parker, Parkertown, NJ. Very old working paint and excellent structural condition. Bottom weight and John Hillman collection tag. 200-300 Not Shown

300. **BRANT** Barnegat Bay, NJ. Very old working paint and structurally very good condition. Typical neck check. Hollow carved with bottom weight removed.

301. **PAIR OF BROADBILLS** by Charles "Pete" Wilber, Island Heights, NJ. Both are in excellent original paint and appear to be unused. Drake with hairline crack in upper bill. Both branded CW on bottom. 100-200

302. **BLACK DUCK** attributed to Rhodes Truex, Atlantic City, NJ. Old flocked paint and structurally sound condition. Crack in neck. Scarred by large shot on left side. Inlet bottom weight and original glass eyes. 100-200

303. **CANADA GOOSE**, probably Barnegat, NJ, attributed to Henry Kilpatrick. Weathered working paint and sound condition, with possible bill repair. Retains bottom weight. JG stamped on bottom. 300-500

304. **BLACK DUCK**, possibly Parkertown, NJ. Very old working paint. Hollow carved with deep ice groove. Pad weight and rigging thong on bottom. Old John Hillman staple on bottom. 100-200

305. **EARLY BLACK DUCK** attributed to Charles Lippincott, Tuckerton, NJ. Very old working paint and structurally sound condition. Hollow carved. Rare New Jersey black duck. 150-250

306. **BLACK DUCK** by Ruben Corliss, Manahawkin, NJ. Very old working paint showing in-use wear. Structurally very good. Hollow carved with inlet bottom weight and leather rigging thong. Fine example of this maker's work. 100-200

307. **CANADA GOOSE**, Barnegat Bay, NJ. Very old working paint and structurally good condition. Hollow carved with inlet bottom weight. Carved H in bottom. Classic New Jersey style. 300-500

308. **BLUEBILL HEN** by H.V. Shourds, Tuckerton, NJ. Old in-use repaint by Hurley Conklin. Hollow carved with inlet bottom weight. 200-400



**309. SWIMMING BARNEGAT BAY BRANT** attributed to Harland Price, Parkertown, NJ. Old working paint and structurally good condition. Bottom weight removed. Hollow carved. 200-300 Not Shown

**310. EARLY GOLDENEYE**, possibly New Jersey, in very old working paint. Structurally very good with bottom pad weight, ring and staple. 100-200 Not Shown

**311. BROADBILL DRAKE** attributed to Lloyd Parker, Parkertown, NJ. Old working paint worn at edges. Hollow carved with deep ice grooves. Inlet bottom weight and rigging eye. 100-200 Not Shown

**312. BRANT**, Barnegat Bay, NJ. Very old working paint and structurally good condition. Hollow carved. Retains bottom weight and leather rigging. 100-200 Not Shown

**313. PAIR OF BROADBILLS** by Rube Corliss, Manahawkin, NJ. Good original paint showing some in-use wear and staining. Both structurally very good. Both hollow carved with inlet bottom weights and rigging leathers. See Plate 127, New Jersey Decoys, by H. Fleckenstein, Jr. 200-300

**314. BLACK DUCK**, Barnegat Bay, NJ, attributed possibly to a member of the Forsythe family. Very old working paint. Structurally good condition with a crack in the back and checks and repairs to neck. Possibly part of the Vorhees rig. Hollow carved. Bottom pad weight. 200-300

**315. BLACK DUCK** by H.V. Shourds, Tuckerton, NJ. Old working repaint in very good condition with some flaking and separation at seam. Hollow carved with inlet bottom weight. Retains tack eyes. Nice full carving. 300-400

**316. THREE ORIGINAL PIECES OF ARTWORK** by Murray Mitterhoff, consisting of a sleeping black duck, watercolor on paper, a upper body Canada goose, water color on paper, and a hen merganser, watercolor on artist paper. All signed LR. All framed and matted. 100-200

**317. BLACK DUCK** attributed to Ellis Parker, Beach Haven, NJ. Very old working paint with feather detail. Structurally very good. Hollow carved with wood peg construction. Retains bottom pad weight. Fine full bodied example. 100-200

**317A. BLACK DUCK** attributed to Mark Kears, Linwood, NJ. Near-mint flocked and painted surface. Structurally excellent. Hollow carved with inlet weight and rigging intact. 200-300

**317B. BRANT** attributed to Joe King, Manahawkin, NJ. Very old working paint and structurally very good condition. Old repair to upper neck. Hollow carved with deep ice groove and dowel construction. Weight removed. 100-200





**318. OUTSTANDING PAIR OF HALF-MALLARDS** by Nathan Rowley Horner, Tuckerton/West Creek, NJ, 1881-1943. This outstanding pair of half-mallards is mounted on artist board that has been painted in a manner to reflect a sunset on a water ground. Both are in very dry condition, the result of having been stored in an attic until recently found in New Jersey. Both in original paint and untouched condition. Both appear to be hollow carved. Both retain original eyes. This extraordinary pair of recently discovered decoy carvings are in "as found" condition. 5000-7000

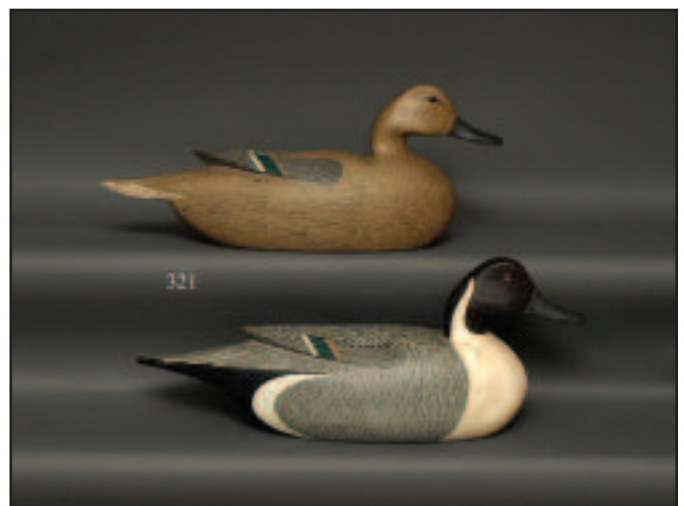




**319. RARE EARLY CANVASBACK DRAKE** by Caleb Ridgeway Marter, Burlington, NJ. Appears to be in original paint and condition. This fine hollow carved example of Marter's work has detailed feather carving on back and fluted tail. Fine bill carving with see-through nostril. Retains original bottom weight, rigging and Marter identification tag. An exceptionally rare and well-carved decoy for this maker. 800-1200

**320. OUTSTANDING EARLY PINTAIL HEN** by Caleb Ridgeway Marter, Burlington, NJ. Excellent original fine feather paint. Unrigged, unused condition. Hollow carved with raised carved wings and elongated cupped fluted tail. This decoy was given as a wedding gift to a member of the Marter family and has been a shelf carving for display until the present time. Outstanding example of this maker's work. 800-1200

**321. OUTSTANDING AND RARE PAIR OF PINTAILS** by Ridgeway "Reg" Marter, Burlington, NJ. Excellent original paint and unused condition. Both hollow carved and structurally sound. Both decoys have raised carved wing feathers and elongated tail tips. The underside of the tails are cupped. Both painted with fine ticking and feather work overall. Both retain original glass eyes. Outstanding pair of Delaware River decoys. This particular pair of decoys was collected by Bud Seaman who got them directly from Reg Marter or Tom Fitzpatrick. Never rigged for use but displayed as shelf birds. Considered to be one of the finest existing pairs of Marter's work. See *New Jersey Decoys* by H. Fleckenstein, Jr., pg. 227, Plate 559. 4000-6000





**322. BLACK DUCK** by Caleb Ridgeway Marter, Burlington, NJ. Very old working paint by Marter. Fine feather paint detail overall. Bold carved raised wings and cupped fluted tail. Retains original bottom weight, rigging and Marter id tag. 200-300

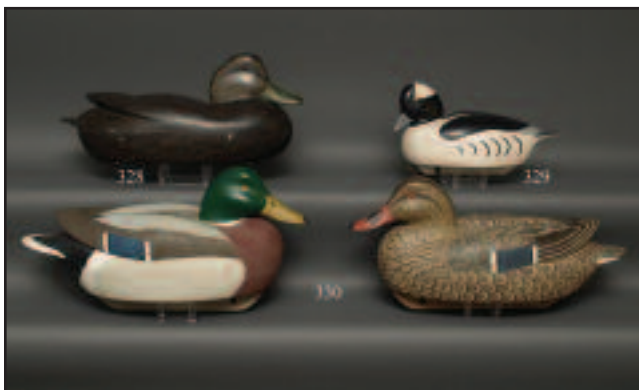
**323. BLUEBILL HEN** possibly a very early Caleb "Reg" Marter, Burlington, NJ. Very old working paint and structurally sound condition. Fine early Delaware River decoy. Hollow carved. Retains original bottom weights, rigging leather and Marter identification tag. 200-300

**324. MALLARD DRAKE** by Caleb Ridgeway Marter, Burlington, NJ. Old working paint by Marter. Structurally sound condition. Exhibits bold relief carved wings with broad fluted tail. Retains bottom weights and owner identification tag. 200-300

**325. VERY EARLY PINTAIL DRAKE** by Caleb Ridgeway Marter, Burlington, NJ. Excellent working paint by Marter with fine feather detail. Structurally sound with raised carved wing tips and long fluted tail. Hollow carved. Retains original bottom weight, ring and maker's identification on bottom. 200-300

**326. VERY EARLY BLUEBILL DRAKE** possibly a very early "Reg" Marter, Burlington, NJ. Very old working paint and structurally sound condition. Raised carved wings and fluted tail in the classic Delaware River style. Old hairline crack in upper bill. Bottom weight, ring and maker's identification on bottom. 200-300

**327. EARLY BLACK** by Caleb Ridegway Marter, Burlington, NJ. Very good working paint by Marter with fine feather detail overall. Structurally sound. Hollow carved with raised carved wing tips and fluted tail. Snug head model with original bottom weight, ring and maker's identification. 200-300



**328. BLACK DUCK** by Joe Bauer, Roebling, NJ. Excellent original paint showing some minor in-use rubs. Hollow carved, snug-head model with raised carved wing detail and weep hole. Retains pad weight, leather rigging and maker's information on bottom. 600-900

**329. RARE BUFFLEHEAD DRAKE** by Joe Bauer, Florence, NJ. Excellent original paint and structurally sound condition. Hollow carved with nice wing separation and full bottom keel. Head is turned slightly left. Maker's identification on bottom. This decoy is the first bufflehead offered at auction by this carver and was part of the of the carver's shooting rig. 500-700

**330. RARE AND FINE PAIR OF MALLARDS** by Joe Bauer, Florence, NJ. Excellent original paint with very fine paint detail and feather work to the hen. Both decoys are structurally sound with very full bodies exhibiting raised carved relief wings and weep holes. Both with deep ice grooves. Both hollow carved with full bottom keels. Carver's name tag affixed to both. Both bills have detailed carving. Drake's head turned slightly right. Rare pair of Delaware River decoys and possibly the first true mallard pair by this carver to come to auction. 1500-2000



**331. VERY EARLY BLACK DUCK** possibly Blair School, in old working paint. Hollow carved. Retains weight. Together with a FOLDING TIN CROW SILHOUETTE in weathered original paint. Hinges and rigging intact. 100-200 One Shown

**332. BROADBILL DRAKE** by Clark Madara, Pitman, NJ. Appears to be in original paint with possible touch-up to bill top. Paint has in-use wear with wood showing through in areas. Structurally excellent with relief carved wings and raised carved wing tips. Carved detail to speculums. Bottom weight removed. Very early and fine example of this maker's work. 600-900

**333. BROADBILL HEN** by James West, Bordentown, NJ. Very old working paint and structurally sound condition. Hollow carved with bottom weight and rigging eye. 100-200

**334. BLACK DUCK** Delaware River, by W.K. Allen. Excellent original paint showing very minor in-use rubs. Hollow carved, snug-head model with raised wing detail and weep hole. Retains bottom pad weight impressed with owner's information. 300-500

**335. RARE BUFFLEHEAD DRAKE** by J.J. West, Bordentown, NJ. True Delaware River gunning model in excellent original paint showing minor in-use wear. Hollow carved with deep ice groove and head turned slightly right. Bottom keel removed. 500-700

**336. BLACK DUCK** by John Egeli, II, Roebling, NJ. Excellent original paint and structurally sound condition. Hollow carved with raised wing detail and fluted tail. Excellent bill carving and painted ticking on head. Retains bottom weight, rigging and identification. 300-500

**337. PAIR OF MALLARDS** attributed to John McLoughlin, Bordentown, NJ. Very good original paint showing some in-use wear. Structurally excellent with some minor rubs to edges. Cork body construction with deep relief wing detail and raised carved wing tips. Both retain original full keels. 500-800

**338. EARLY BLACK DUCK** by John McLoughlin, Bordentown, NJ. Excellent original flocked paint with very minor rubs to bill and tail edge. Hollow carved with split tail and full bottom keel. Unweighted. 800-1200

**339. EARLY CANADA GOOSE** with very early working paint by Caleb Ridgeway Marter, Burlington, NJ. Fine feather paint detail to back. Hollow carved with bottom pad weight. Branded FEGC on bottom. 200-300





**340. RARE SURF SCOTER** by Caleb Ridegway Marter, Jr., Burlington, NJ. Near-mint paint and structurally fine condition. Hollow carved with exceptionally well-executed carved head detail. Retains original bottom pad weight with maker's name and leather rigging. 400-600

**341. ESPECIALLY FINE BRANT** by Caleb Ridegway Marter, Jr. Mint original paint and condition. Hollow carved with fine bill and face carving. Retains original bottom pad weight leather rigging. Weight stamped with maker's name. Exceptional! 400-600

**342. FINE PAIR OF GREEN WING TEAL** by John "Jack" Wood, Trenton, NJ. Mint original paint and unused condition. Fine feather work overall. Carved raised crossed wing tips. Hollow carved with both heads slightly turned. Retains bottom weight and rigging. Both signed and dated 12/03. 600-800

**343. EXCEPTIONALLY WELL-CARVED BLACK DUCK** by Ron Sabatini, Levittown, PA. Mint original paint and condition. Tucked head, Delaware River model with relief-carved wings, detailed wing tips and fluted carved tail. Fine feather detail overall. Hollow carved with original pad weight and carver's signature. 150-250

**344. PAIR OF PINTAILS** by Ron Sabatini, Levittown, PA. Mint original paint and unused condition. Both with fine feather detail and raised split tail carving with fluting. Both heads turned slightly left. Both hollow carved in the Delaware River manner. Both signed and dated '05. 200-400



**345. EXTREMELY RARE AND EARLY WIDGEON HEN** from the Blair school, Delaware River, circa 1870-1890. Fine detailed original paint that is almost identical to the paint of John Blair, Sr. Exhibits fine ticking to the head and traditional feather work to the breast and sides. The paint shows in-use wear but remains strong overall with signature oval painted bottom. The decoy is in excellent structural condition. Hollow carved with raised shelf for head placement. Retains original tack eyes. Right side struck by shot. Bottom weight has been removed. Branded twice on bottom W.P. PATTON with a crisp sharp brand. This extremely fine decoy is in out-of-rig condition. An exceptional rarity for the Blair Delaware River school. See *Floating Sculpture* by Huster and Knight and *American Bird Decoys* by W. Mackey for additional information. 4000-6000





**346. FINE GREEN WING TEAL DRAKE** by John McLoughlin, Bordentown, NJ. Mint original paint with very fine feather detail. Carved with deep ice groove separation to wings. Raised layered and carved wing tips and fluted tail. Head turned slightly right with carving to bill. Signed by the artist on bottom. 800-1200

**346A. FINE GREEN WING TEAL HEN** by John McLoughlin, Bordentown, NJ. Mint original paint and condition. Carved with deep ice groove separation. Carved layered wing tips and fluted spread tail. Head is turned slightly right. Very fine paint ticking on head and face with bill carving. A very fine carving by this noted artist. 800-1200



**347. EARLY MALLARD DRAKE** by Bob White, Tullytown, PA. Excellent original paint and structurally sound condition. Very full-bodied, hollow-carved decoy with head turned sharply right. Carved wing separation and carved split tail with small curled feather detail. Shot mark on left side back. Retains early bottom pad weight and Bob White's gunning tag indicating that it was a part of Bob's shooting rig at one time. Bob White stated that this decoy was part of a gunning rig that he made, used and gunned over with John McLoughlin on the Delaware River. A true gunning decoy by this famous Delaware River carver. 1200-1800



**348. OUTSTANDING TRUE PAIR OF BLACK DUCKS** by Bob White, Tullytown, PA. Mint original paint and unused condition. Both with especially fine painted feather detail and head ticking. Both decoys are hollow carved and have raised carved wing tips and broad carved fluted tails. Both heads are slightly turned. Both decoys have Mr. White's trademark triangular embossed weights. Both have the original leather rigging. An outstanding pair of decoys by this master craftsman. See *Floating Sculpture*, by Huster and Knight for information. 3000-4000

**349. FINE PINTAIL DRAKE** by Bob White, Tullytown, PA. Mint original antiqued paint and structurally fine condition. This decoy exhibits excellent painted feather detail and is hollow carved with a restful head position and partially closed eyes. Raised carved wing tips and elongated feather-carved sprig tail. Retains signature triangular quail embossed weight and rigging leather. Signed and dated 1997 on bottom. For additional literature see *Floating Sculpture*, by Huster and Knight, pg. 112, Plate 55 for a similar example. 1500-2500



**350. VERY FINE PAIR OF MALLARDS** by Bob White, Tullytown, PA. Fine mint original paint and structurally sound unused condition. Hen with very fine detailed painted feather work and head ticking. The drake with fine painted feather work and comb painting. Both decoys carved with upswept crossed wing tips and fluted cupped tails. Both heads carved in a content position with eyes partially closed. Both with heads slightly turned. Drake also exhibits carved curled feather between crossed wing tips. Both hollow carved with Mr. White's signature quail embossed weights affixed to bottoms. Both signed and dated 1994 on bottoms. See *Floating Sculpture* by Huster and Knight for additional information. 3000-4000





**351. VERY RARE AND FINE PAIR OF SPECKLED TEAL** by Bob White, Tullytown, PA. Both in near-mint original paint and condition. Both with excellent detailed feather painting and raised carved wing tips and cupped fluted tails. One in a sleeping position; the other is in a content position. Both with partially closed eyes. Both hollow carved and retain Mr. White's signature triangular weights with embossed quails and leather thongs. Both are signed and dated 7-26-04. Both bear the notation Argentina Speckled Teal, referencing Bob White's shooting trip to Argentina. 2500-3500



**352. RUDDY DUCK** by Bob White, Tullytown, PA. Excellent antiqued paint and structurally fine condition. Very sleek with elongated tail. Head turned slightly left. Inlet bottom weight with rigging. Crisp oval brand. 500-800

**353. PAIR OF BUFFLEHEADS** by Bob White, Tullytown, PA. Mint original paint and unused condition. Both with fine paint detail and raised carved wings. Broad fluted tails. Both heads slightly turned. Very plump pair of butterballs. Both retain triangular quail embossed weights. Both signed and dated 1995. 1200-1500.



**354. GROUP OF SEVEN DECOY BOOKS** consisting of Wildfowl Decoys by J. Barber, soft cover, Decoys of the mid-Atlantic Region by H. Fleckenstein, American Bird Decoys by R. Mackey, Mason Decoys, Hillcrest Publications, Chesapeake Bay Decoys by R. Richardson, Art of the Decoy by A. Earnest and Decoys of the Atlantic Flyway by G. Starr, M.D. Six with dust jackets. All in good condition. 200-300

**355. RUDDY TURNSTONE SHOREBIRD** by Bob White, Tullytown, PA. Excellent original paint and antiqued condition. Structurally sound with the original bill. Signed Bob White 1981 under tail. Mounted on a burlwood base. 400-600

**356. BLACK DUCK**, possibly by Gene Hendrickson, Lower Bank, NJ. Excellent original paint with some minor in-use wear. Structurally

sound condition. Retains tack eyes and inlet bottom weight. Nice early New Jersey black duck. 100-200

**357. FLATTY YELLOWLEG** attributed to Chris Sprague, Beach Haven, NJ. Excellent original paint in the H.V. Shourds style. Structurally sound with an X carved under the tail. Provenance: Ex-Mort Hansen collection. 200-300

**358. SMALL CANADA GOOSE**, restored condition. Hollow carved with inlet bottom weight. 100-200

**359. THREE SPEAR-FISHING DECOYS** in weathered original paint and structurally fine condition. Rusting to fins. Consists of a striped fish, spotted fish and a beaver. 75-125

**360. BOOK-STYLE FOLIO** of a selection of trout flies with one page containing wet flies and one page containing dry flies and nymphs. All expertly tied and labeled with printed descriptions. Very early and unusual presentation folio illustrating what appear to be American trout flies. Both sides sealed with clear plastic windows. Excellent overall condition. 115 in total with three loose from fastening. 100-200

**361. THREE ICE FISHING DECOYS** in weathered original paint and structurally fine condition. Rusted fins. Group consists of a tadpole, a herring and a trout. 75-125

**362. GROUP OF SIX FEDERAL DUCK STAMP FOLIOS** encompassing the years 1989, 1990, 1992, 1993, 1994 and 1996. First day of issue from Washington, DC. All in a gold embossed brown folio. 100-200

**363. THREE WHIMSICAL FISH DECOYS** in weathered original paint consisting of a salamander, a sunfish and a cottontail rabbit. All in excellent condition with rust on metal fins. 75-125





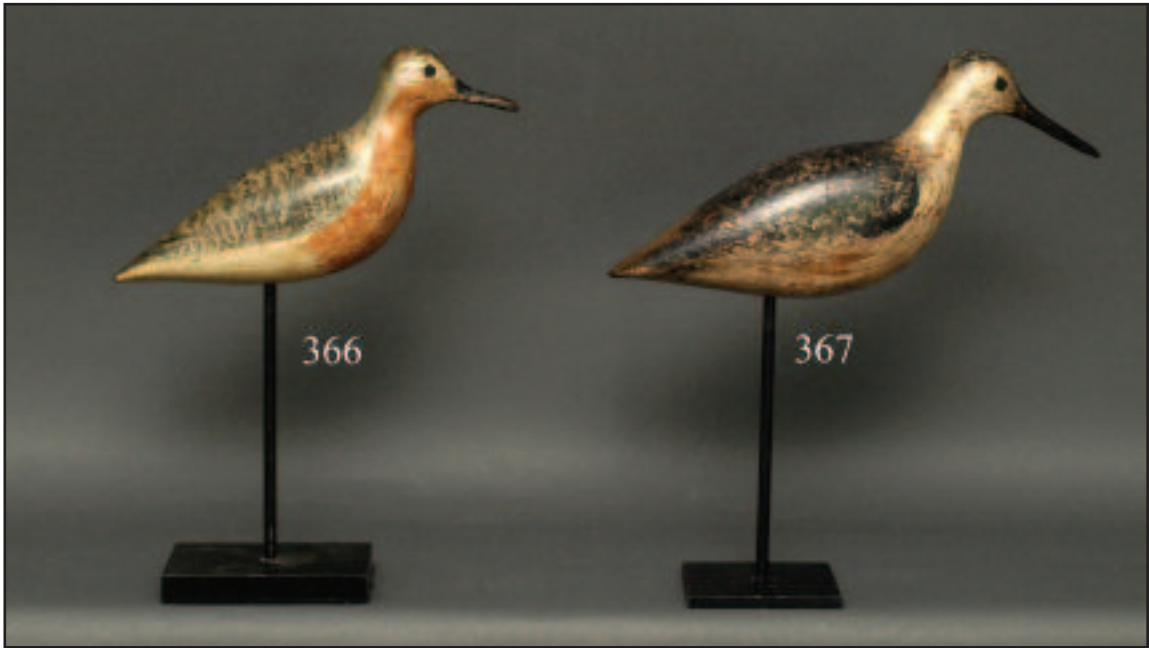
**364. BLACK-BREASTED PLOVER** from the Charles Turner rig, Atlantic City, NJ, circa 1880. Excellent original paint showing looped feather paint pattern on body. Retains original inset bill pinned through back of head. An exceptionally fine example of a New Jersey shorebird in excellent paint and condition. Charles Turner is said to have been the buoy light tender for the Atlantic City area. This shorebird is a fine example of American folk art. 4000-6000

**365. YELLOWLEG SHOREBIRD** from the famous Charles Turner rig, Atlantic City, NJ, circa 1880. Excellent original paint and structurally fine condition. Paint shows detailed wing feathers and bar pattern feather work on back, head and breast. Retains original inset bill that is pinned from the back of head. Outstanding early example of a New Jersey

shorebird with classic lines. It was believed that Charles Turner was one of the buoy tenders of the Atlantic City region. A rare and outstanding example. 5000-7000

**366. RARE ROBIN SNIPE** by Harry V. Shourds, Tuckerton, NJ. Excellent original paint and structurally sound condition. Paint showing some minor wear to breast area. Back retains very strong feather detail and wing tip bar painting. Retains original bill. For examples, see *New Jersey Decoys* by H. Fleckenstein, Jr. This rare, early New Jersey classic is a nice plump example by this legendary carver. Formerly part of the Mort Hansen collection. 4000-6000

**367. RARE DOWITCHER** by Harry V. Shourds, Tuckerton, NJ. Very good original paint with what appears to have been some very old touch-up to white area of neck and underside. Very strong pattern to the back feathering. Very good structural condition with approximately a 1 3/8" bark sliver from left side. Retains original bill. Fine early example of Shourds' work with a nice plump body. See *New Jersey Decoys*, by Henry Fleckenstein, Jr. for carver information. Formerly in the Mort Hansen collection. 3000-4000





**368. MIT EST \* BLACK BREASTED PLOVER**, probably New Jersey from the Murray Mitterhoff estate. Very good original paint showing minor in-use wear and flaking. Structurally very good with what appears to be the original bill with chip missing from tip. Carved in the beetle head style with applied wings. Bears the Mackey stamp. 300-500

**369. TWO EARLY BEETLE-HEAD SHOREBIRDS**, probably New Jersey, from the Murray Mitterhoff estate. Excellent original paint and structurally sound condition. Both with extended necks in an alert position. Both retain original iron bills. Mounted on a driftwood base. 400-600



**370. OUTSTANDING YELLOWLEG** by William Southard, Bellmore, NY, circa 1880-1890. This very early shorebird retains weathered original paint exposing wood in areas. Fine feather detail and paint ticking still visible and is strongest on breast, underside and back. Structurally very good with deep relief-carved wings and carved eyes. Retains original pinned bill. Lightly hit by shot. Worn area on bottom placement hole was tightened by Russ Allen. A similar example was sold in the Dr. James McCleery sale, January 2000, Lot No. 412. For a similar example, see *The Great Book of Wildfowl Decoys*, J. Engers, pg. 103. 4000-6000





370A. ROBIN SNIPE (RED KNOT) by Taylor Johnson, Bay Head, NJ, circa 1880. Retains excellent original paint with very minor wear. Structurally fine condition with thin sliver of wood missing on bottom and left side. Bill is pinned through the back of the head. Screw eye through bottom tail for carrying. Formerly in the William J. Mackey collection and bears the Mackey stamp. Sold at the McCleery sale, January 2000, Lot 363. 6000-8000





**371. GROUP OF 16 FIELD AND STREAM MAGAZINES**, with issues spanning 1935 through 1944. Also a Sports Afield, 1953, and an issue of Outdoor Life, 1942. Two issues of Field and Stream missing covers. All in generally good condition. 100-200

**372. WATERCOLOR ON ARTIST BOARD** of a black duck by Lemuel T. Ward, Crisfield, MD. Notation reads: "HI HEAD '69." Signed lower right and dated 8/22/70. Framed and matted. Image size is approximately 8 1/2" x 11 3/4". From the Murray Mitterhoff collection. 200-300

**373. THREE EARLY WOOD SHOT SHELL CASES**, including Western, Winchester and a Remington boxes. All with printed names. All in fair condition. 100-200

**374. GROUP OF DRAWINGS AND ORIGINAL ARTWORK** by Murray Mitterhoff, Springfield, NJ. Together with advertising posters and lithographs. Eight pieces. 50-75

**375 FULL-SIZE FLYING BRANT** by Jamie P. Hand, Cape May Courthouse, NJ. Excellent original paint and structurally fine condition. Minor filler raising at wing joints. Outstretched wings and elongated neck. Branded JP HAND on bottom. 200-400

**376. RUDDY DUCK DRAKE**, possibly by Murray Mitterhoff, Springfield, NJ. Good original paint with scuffs. Balsa construction with crack at mid-tail. 50-100

**377. ETCHING** by Roland Clark titled "The Takeoff." An edition of 65, signed LR. Image size approximately 7 1/2" x 6". Together with "To Keep a Tryst with the Dawn, An Appreciation of Roland Clark" by John T. Ordeman. Limited edition book, No. 177. Signed by author. 100-200

**378. GROUP OF FOUR SHOREBIRDS**. Three in unfinished condition and one-half of a tinny. 50-75

**379. TWO WORKS** by Richard E. Bishop. The first is a Christmas card depicting two swans. The second is a dedication to the Pennsylvania State Fish and Game Protective Association. Personalized to Elmer P. Weisel and signed LR by artist. 100-200





Both retain original weighted keels. Both from the Jimmy Robinson rig used at the Sports Afield Hunting Lodge, St. Ambrose. 1800-2200

**385. BLACK DUCK** by Evereste Savage, Quebec, Canada. Very good original paint and structurally sound condition. The paint with very strong scratch feather work and head ticking. Shows minor paint rubs to edges. Unweighted with leather rigging strap. 200-300

**386. MALLARD DRAKE** from the Quebec, Canada, area. Very good original paint with some minor rubs to head and bill. Deep feather carving overall. Weight removed. Retains rigging ring. 100-200

**387. CANADA GOOSE**, probably the Maritime provinces, in very good original paint showing rubbing to the edges. Solid carved, structurally sound. Notched carved tail. Possibly a field goose. Two circular brands on bottom. Neck loose at base. 200-400

**388. TWO DECORATIVE DECOYS** consisting of a CANVASBACK DRAKE and a REDHEAD. Both in original paint and structurally good condition. 75-125

**389. EARLY PRIMITIVE BRANT** probably Maritime provinces. Early weathered working paint with a root-style two-piece head. Probably used as a field decoy as it is unweighted. Head turned slightly right. 100-200

**390. BLUEBILL DRAKE** by Marcel Racette, Montreal, Canada. Excellent original paint showing very minor wear to edges. Structurally sound condition. Heavily carved wing feathers and carved fluted tail. Some flaking and loss of paint on head and neck. Retains inlet circular bottom weight. Head turned slightly right. 600-900



**391. VERY EARLY DECOY**, possibly a hen teal from the Weedsport area, New York. This unusual decoy retains original paint in unused condition. Structurally sound with carved eyes and carved bill detail. Faint hairline crack at mid-bill. Decoy has never been weighted. Overall crazing. A very rare decoy. 2000-3000

**392. FINE BLACK DUCK** by Donald Stewart, Castine, ME. Very good original paint and structurally sound condition. Solid body with inlet head and full keel. Tight hairline check on rear back. One of six made for the Bagaduce River circa 1950. 100-200

**393. FINE PAIR OF SWIMMING EIDERS** by Richard Chmiel, East Lyme, CT. Excellent original paint and structurally fine condition. Hollow carved with deep ice grooves and fine bill detail. Both retain bottom tear drop weight, large rigging ring and maker's identification tag. 300-500

**394. RARE MINIATURE SCOTER** attributed to Gus Wilson, South Portland, ME, 1864-1950. Fine

carving with typical inlet head. Excellent original untouched paint and condition. Carved with a fine cupped underside to tail. Overall length is 4". 800-1200

**395. PAIR OF EIDERS** by Fulton Newcombe, Ship Harbour, NS. Very good original paint and unused condition. Both solid carved with bottom rigging. Both with maker notation and dated 1992. 100-200

380. NO LOT

381. NO LOT

382. NO LOT

**383. GOLDENEYE HEN** by Carr Eyri, from the Thousand Island area. Together with a BLUEBILL DRAKE by Frank Lewis, Ogdensburg, NY, in old working paint and good structural condition. 100-200

**384. FOLKY PAIR OF CANVASBACKS** attributed to Duncan Ducharme, Ambrose, Manitoba. Both retain excellent original paint with minor rubs. Structurally excellent. The hen with minor shot scarring; the drake with tight check to back.





**396. FINE WATERCOLOR** by Murray Mitterhoff of an Ira Hudson Canada goose. Good fresh image on artist paper with good detail. Signed lr. Image size is approximately 12 1/2" x 19". Glazed, framed and matted with some foxing to matting. 100-200

**397. RED-BREASTED MERGANSER DRAKE** by Herb Miller, Ship Bottom, NJ. Competition shooting model in near-mint original paint and condition. Relief-carved wings. Hollow construction. Head turned right and sharply upward. Deep keel. Signed and dated '75 on

bottom. 200-300

**398. EXCEPTIONAL GREEN WING TEAL HEN** by Geo. "Coot" Garton. Detailed carved and painted feather work. Raised wings and fluted tail. Back and wing feathers overlap. Dedicated, signed and dated 1974. Also branded COOT. 300-600

**399. AMERICAN MERGANSER HEN** by Ken Scheeler in near-mint original paint and condition. Competition gunning model. Ice groove. Head turned slightly left. Deep weighted keel. Signed and dated 1976 on bottom. 200-300

**400. LESSER SCAUP** by Kent E. Duff, Rochester, MN. Excellent original paint and condition. Relief-carved wings with crossed, raised tips. Competition gunning model with deep keel. Hollow carved. Signed and dated '84. 100-200

**401. AN UNUSUAL STICK-UP GOOSE** in original paint with some in-use wear overall. Hollow carved with a relief carved heart on back. Three placement holes drilled in bottom. TD carved under tail. 400-600

**402. BLACK DUCK** by Jimmy Vizier in near-mint original paint and condition. Relief-carved wings with crossed tips and fluted tail. Head turned slightly left. Signed and dated 1988 on bottom. 200-300

**403. MALLARD DRAKE** by Del Herbert in mint original paint and condition. Exceptional feather detail and raised carved wing tips. Mounted with competition keel. Signed, with #95-142. 200-400

**404. MALLARD DRAKE** by Jack Tierney, Stratford, CT. Excellent original unused paint by Bob Kerr. Structurally sound with relief carved wings. Head turned slightly left. Notation on bottom reads Painted by Bob Kerr. 75-125

**405. PAIR OF MALLARDS** by Joseph Verdin, Bayou Blue, LA. Near-mint original paint and unused condition. Never rigged. Structurally sound with carved wing separation and raised split tail. Hen signed Joe V. on bottom. 300-500

**406. PAIR OF RING NECKS** by Sidney J. Tregue, Des Allemands, LA. Both in excellent original paint and condition. Both with maker's name carved in bottom. 200-300

**407. BLUE WING TEAL DRAKE** by Ed Legendre, Thibodaux, LA. Excellent original paint and unused condition. Raised split carved tail. Signed with notation July 10 Hurricane Dennis on bottom. 200-400

**408. BLUE WING TEAL** by Andrew Tom Beary, Gonzales, LA. Near-mint original paint and unused condition. Raised wing-tip carving. ATB branded in bottom. 200-400





**409. CANVASBACK DRAKE** by Dan Williams in mint original paint and condition. Exceptional detailed feather work and fine carving. Raised wing tips, detailed bill. Head turned slightly left. Signed and dated 1987 on bottom. 300-400

**410. EXCEPTIONAL BASS RELIEF WOOD CARVING DEPICTING A WOOD THRUSH** with carved leaves atop a carved base. Appears to be carved from a single piece of wood. Natural dark finish. Signed J. Sharp '81. 200-400

**411. CANVASBACK DRAKE SILHOUETTE** by Dan Brown. Excellent original comb-feather paint and structurally sound condition. Mounted on a bottom board and keel. Signed and dated April 86. 100-200

**412. BLUEBILL HEN** by Hans Bolte in excellent original paint and unused condition. Relief-carved wings with head turned slightly left. Full bottom keel. Signed on bottom with notation #57. 75-125

**413. UNUSUAL RING NECK DR** by Lawrence J. Reader in near-mint original paint and condition. Split tail with head turned slightly right. Bottom signed and dated 1983. 100-200

**414 BROADBILL HEN** by champion carver Ken Scheeler in near -mint original paint and unused condition. Deep relief-carved wings and full competition teal. Hollow construction with head turned slightly left. 300-500

**415. CANADA GOOSE** by Hans Bolte in very good original paint and structural condition. Hollow carved with full bottom keel. Signed by maker. Together with a BLUE GOOSE by Cliff Hollestelle in excellent original paint and condition. Hollow carved. Signed on bottom. Also, a CANADA GOOSE carved in the Shourds manner in excellent original paint and condition. Hollow carved. 200-300 One Shown

**416. BRANT** by John Petti in near-mint original paint and unused condition. Head turned slightly left. Hollow carved, competition model. Signed and dated 1978. 100-200



**417. TWO BLACK DUCKS** by Jack Tierney, Stratford, CT. Excellent original paint and unused condition. One is a sleeper. Both weighted with rigging. One is signed. 100-200

**418. FOUR DECORATIVE CARVINGS** consisting of a one-half size Canada goose by W. Burns, a metal-bill curlew by Coot Garten, a curlew in natural wood by Jack Tierney and a natural wood snipe by an unknown maker. All in excellent condition. 100-200 One Shown

**419. EARLY BLUEBILL HEN** by Bob Kerr, Smiths Falls, Ont. Excellent original paint and condition. Some very minor rubs to tail edge. Hollow carved with full keel. Head turned slightly left. 200-400

**420. EARLY CANADA GOOSE** possibly New England, in very good original paint showing minor rubs especially to bottom edges. The paint with overall crazing. Structurally very good with a very fine hairline crack in the upper neck. Deep ice groove the length of back. Fine hairline crack along the back. Retains bottom weight and rigging screw. 800-1200

**421. TWO WHITE WING SCOTERS** by John E. "Jack" Tierney, Stratford, CT. Both in very good original paint and structurally sound condition. Both hollow carved in the classic Stratford, CT, style. Both retain full bottom keels and detailed carved bills. Bodies both with ice grooves. Both with JACK TIERNEY carved in bottoms. 200-300

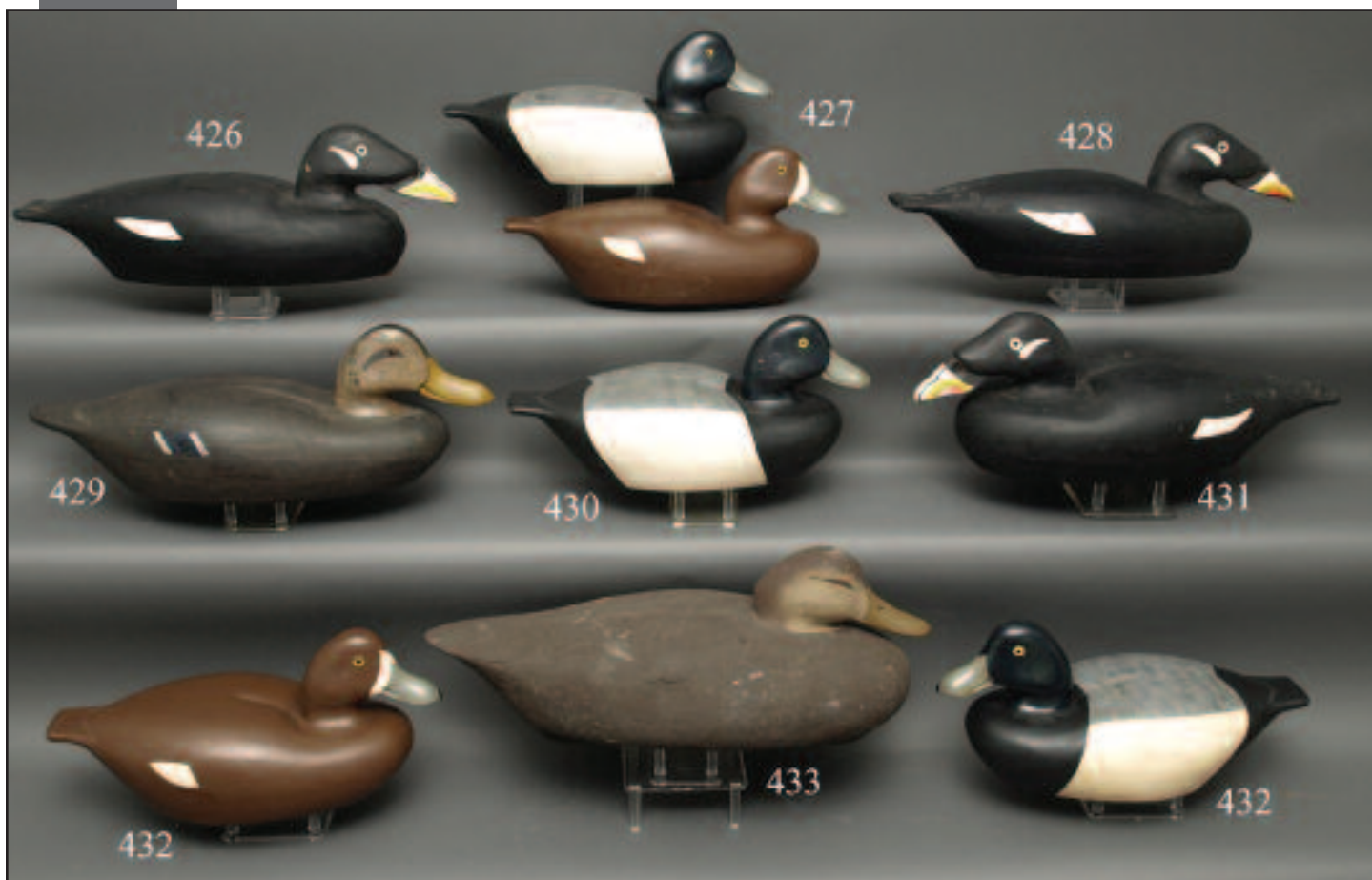
**422. AMERICAN COOT** by Jay Polite in mint original paint and condition. Detailed feather carving with head turned slightly right. Upswept tail. Signed and dated 1976 on bottom. 200-300

**423. BLACK DUCK** by Roswell Bliss, Stratford, CT. Excellent original paint and unused condition. Head with fine feather ticking. Ice groove and carved wing separation. Typical Connecticut tail carving. Retains tear drop weight and rigging. Branded R BLISS and JET. 200-300

**424. FINE BROADBILL DRAKE** by Roswell Bliss, Stratford, CT. Excellent original paint and unused condition. Ice groove on back with comb feather painting. Retains original teardrop weight and rigging thong. Branded R. BLISS and J.E.T. 200-300

**425. BLACK DUCK** by Roswell Bliss, Stratford, CT. Excellent original paint and unused condition. Head with fine feather ticking. Ice groove and carved wing separation. Typical Connecticut tail carving. Retains tear drop weight and rigging. Branded R BLISS and JET. 200-300





**426. WHITE WING SCOTER** by Roswell Bliss, Stratford, CT. Excellent original paint and unused condition. Ice groove in back and typical carved Connecticut tail. Retains original teardrop weight and leather rigging. Branded R. BLISS on bottom. 200-300

**427. PAIR OF BROADBILLS** by Roswell Bliss, Stratford, CT. Excellent original paint and unused condition. Both retain original weights and rigging. Both branded R BLISS on bottoms. Also branded JET. 300-500

**428. WHITE WING SCOTER** by Roswell Bliss, Stratford, CT. Excellent original paint and unused condition. Ice groove in back and typical carved Connecticut tail. Retains original teardrop weight and leather rigging. Branded R. BLISS on bottom. 200-300

**429. BLACK DUCK** by Roswell Bliss, Stratford, CT. Excellent original paint and unused condition. Head with fine feather ticking. Ice groove and carved wing separation. Typical Connecticut tail carving. Retains tear drop weight and rigging. Branded R BLISS and JET. 200-300

**430. BROADBILL DRAKE** by Roswell Bliss, Stratford, CT. Excellent original paint and structurally sound condition. Fine comb painting on back with shallow ice groove. Retains tear drop and rigging. Branded R. BLISS and JET on bottom. 200-300

**431. WHITE WING SCOTER** by Roswell Bliss, Stratford, CT. Excellent original paint and unused condition. Ice groove in back and typical carved Connecticut tail. Retains original teardrop weight and leather rigging. Branded R. BLISS on bottom. 200-300

**432. PAIR OF BROADBILLS** by Roswell Bliss, Stratford, CT. Excellent original paint and unused condition. Both retain original weights and rigging. Both branded R BLISS and JET on bottoms. 300-500

**433. OVERSIZED BLACK DUCK** by Al McCormick. Very good original paint and excellent condition. Tucked-head model. Cork body construction. Bottom keel board branded MC CORMICK and LANGDON. 75-125

**434. TIP-UP BRANT** probably Delaware River, in good original paint with some wear to edges. Two upper leg segments attached to belly area. Two bottom weights attached. Raised carved wings and drop tail. Together with six folding wood crow silhouettes in original paint and used condition. 100-150



# Index

## A

Ackerly Family 233  
Algard, C. 112  
Allen, R. 53  
Allen, W.K. 334  
Animal Trap Decoy Co. 47

## B

Barnes, S. 116, 133  
Bartug, K. 206  
Bauer, 328, 329, 330  
Beardsley, B. 269  
Beary, T. 408  
Berry, C. 194, 208  
Beth, L. 279  
Biddle, B. 66  
Bieber, B. 55  
Birch, C. 186  
Blair School 345  
Bliss, R. 423-432  
Bolte, H. 412, 415  
Boyd, T. 109  
Brettel, S. 106  
Briddell, D. 215  
Brown, B. 65  
Brown, D. 203, 209, 411  
Brown, F. 30-43, 73  
Brunet, T. 193, 196  
Bryan, C. 182

## C

Carlock, T. 267  
Chmiel, R. 393  
Clark, E. 55  
Collins, B. 137  
Conklin, H. 239-259, 261  
Cooke, G. 54  
Corliss, R. 306, 313  
Corson, W. 282  
Cranmer, W. 290  
Curles, P. 177, 178

## D

DaGross, B. 60  
Daisey, D. 164  
Daisey, G. 174  
Daisey, M. 184  
Dobbins, F. 93  
Ducharme, D. 384  
Dudley, L. 192A  
Duff, K.E. 499

## E

Ebersole, W. 192  
Egeli, J. II 336  
Elliott Brothers 160, 161  
Elmer, G. 55  
Evans, A.G. 220  
Eyri, C. 383

## F

Franti, C.E. 226, 227  
Frischia, L. 275

## G

Garton, G. 398

## H

Hall, D. 81  
Hamilton, J. 260, 262

Hancock, M. 166  
Hand, J.P. 56, 61, 76, 77, 85, 276, 375  
Hardenbergh, G.R. 273  
Hart, C. 380, 381, 382  
Hawthorne, D. 270  
Heinfeld, A.G. 159  
Hendrickson, G. 281, 356  
Herbert, D. 222, 230, 403  
Herter's Decoy Co. 20, 22, 23, 29  
Heverin, W. 114, 147  
Hillman, A. 263, 265  
Hillman, J. 74  
Holloway, J. 80  
Holly, James, 119, 120  
Holly, John 118  
Holly, W. 155  
Holt, J. and B. 188, 191  
Horner, N.R. 318  
Hudson, I. 176

## J

Johnson, L. 268, 272, 274  
Johnson, T. 370A  
Joiner, C. 140, 145, 146

## K

Kaune, P. 212, 214  
Kean, L. 70  
Kears, M. 317A  
Kerr, B. 419  
King, J. 295, 317B  
Knoer, D. and T. 97-100, 190

## L

Lawson, O. 96  
Legendre, E. 407  
Lippincott, C. 305

## M

Madara, C. 294, 332  
Marter, C.R. 319, 320, 321, 326, 322- 327  
Marter, C. R., Jr. 340, 341  
Mason Decoy Co. 21, 24-26, 28  
McAnney, Z. 55  
McCormick, A. 433  
McGaw, B. 113, 138, 139, 141  
McKinley, D. 223  
McKinney, J.E. 123, 125, 126  
McLoughlin, J. 337, 338, 346, 346A  
Mears, H.P. 49  
Miller, C.W. 202, 228  
Miller, H. 397  
Mitchell, R. 83, 83, 86, 88  
Mitchell, R. M. 111, 124, 127, 134-136, 142-144, 148, 149, 151, 154, 167, 168  
Mitterhoff, M. 296, 316, 376, 396  
Morey, S. 57, 82  
Morse, B. 185  
Muehimatt, E. 189  
Mueller, K. 104, 107  
Mulcahey, T. 172  
Mullican, J. 103

## N

Newcombe, F. 395  
Nock, P. 198, 204, 207, 210

## O

Ortley, D. 280

## P

Palmer, R. 216  
Parker, E. 317  
Parker, L. 293, 299, 311

Petti, J. 416  
Pierce, J. 152  
Pitzen, T. 195  
Polite, J. 422  
Price, H. 309

## R

Racette, M. 390  
Reader, L. 413  
Reeder, F. 291  
Reinbold, W. 200  
Rhodes, D. 63, 170  
Rinker, J. 44

## S

Sabatini, R. 343, 344  
Savage, E. 385  
Sawyer, C. 128  
Schauber, B. 169  
Scheal, M. 197, 199, 224  
Scheeler, K. 205, 225, 399, 414  
Seibert, J. 219  
Shourds, H.M. 285  
Shourds, H.V. (Seaville) 64, 78, 265  
Shourds, H.V.(Tuckerton) 278, 308, 315, 366, 367  
Southard, W. 370  
Sprague, C. 357  
Stewart, D. 392  
Strunk, G. 52, 75

## T

Tierney, J. 72, 102, 108, 165, 404, 417, 421  
Tilton, P. 79  
Travers, J. 158  
Tregue, S. 406  
Trout, G.P. 91, 218  
Truex, R. 302  
Turner, C. 364, 365

## U

Updyke, J. 286  
Urie, J. 157

## V

Veasey, W. 95  
Verdin, J. 405  
Verity Family 232, 234, 235, 236  
Victor Decoy Co. 29, 46  
Vincenti, P. 150  
Vizier, J. 402  
Vreeland, H. 211, 213

## W

Walsh, N. 71, 201, 221, 229  
West, J. 333  
West, J.J. 335  
White, B. 347-353, 355  
Wilber, C. 94, 301  
Wildfowler Decoy Co. 1-5, 7-19, 27, 45  
Williams, D. 409  
Wilson, G. 394  
Wood, J. 342  
Wooster, J. 105  
Worriow, M. 187  
Wynowski, A. 217

## Y

Yanelli, M. 59



# Conditions of Sale

**Property listed for sale in this auction will be sold in accordance with the following terms and conditions.**

1. Every effort has been made by Frank & Frank Sporting Collectibles LLC to describe articles offered for sale accurately. However, all property offered is sold "as is" and it is suggested that prospective bidders inspect the property before bidding or call this office for a detailed condition report.
2. A "Buyer's Premium" in the amount of 17-1/2% (discounted to 15% for cash or check) shall be added to the successful bid price and is payable by the purchaser as part of the total purchase price.
3. We reserve the right to withdraw any property or alter any catalog description prior to the sale and shall have no liability for such action.
4. We reserve the right to reject any bid. The highest bidder acknowledged by the auctioneer will be the purchaser. Should there be a dispute between bidders, the decision of the auctioneer will be binding.
5. We offer absentee and phone bidding as a service to our clients who are not present at auction. However, we are not responsible for errors or omissions in connection with the execution of such bids.
6. The auctioneer may reject any opening bid which he deems is insufficient and withdraw the article from the sale. The auctioneer may also reject any advance which he decides is insufficient.
7. All items purchased are subject to the 7% New Jersey Sales Tax, unless the purchaser possesses a valid tax exemption number.
8. Payment is due at time of purchase. No property will be released without payment in full. Methods of payment are cash, approved check, and Visa or Master Card.
9. All shipping and insurance charges are the responsibility of the purchaser. Unless otherwise noted, decoys are not sold with stands.
10. By participating in this sale, you indicate your acceptance of the above terms and conditions.
11. Any legal conflict arising from this auction will be heard and judged by the court system in the state of New Jersey. NJSA applies to the auction and participants.