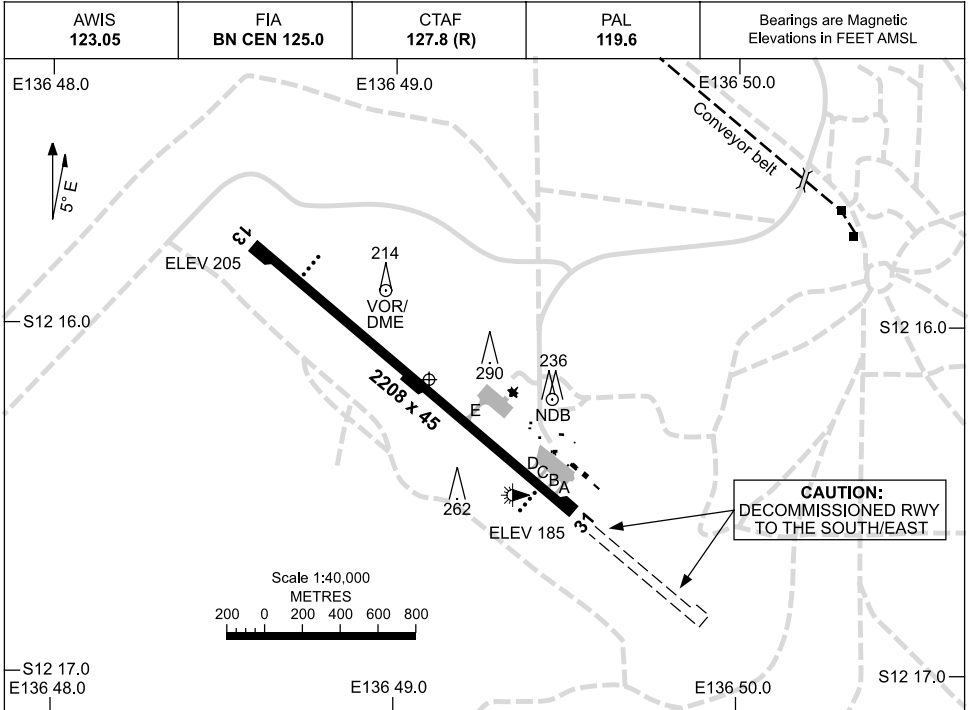


19 NOV 2009

AD ELEV 205
S12 16.2 E136 49.1

AERODROME CHART
GOVE, NT (YPGV)



	AERODROME LIGHTING
RWY	TAXIWAY : SIDELINE BLUE RL : PILOT ACTIVATED 119.6 , SDBY
13 ¹²⁵ ₃₀₅ 31	PAPI LEFT SIDE 3.0° 50FT LIRL

NOTES

TWY D NOT AVBL TO ACFT ABV 24M WINGSPAN.

Changes: 262FT OBST.

PGVAD01-121