

# MASTER PLAN

## 1. ABOUT THE TEMPLE

Now the temple area is very less about **25mtrsX25mtrs**. Many petty shops & houses have surrounded by this temple and has very narrow roads and it is not possible to control the large number of pilgrims coming to this temple. The temple area is to be widened by **200mtrsX200mtrs** surrounding by acquiring the private lands. In this connection it is identified that about 256 houses are obstacle within 200mtrs surroundings which requires rehabilitation. Further there is ongoing work of a **bridge-cum-barrage** for the **Bhima river** on right side of the temple. This **bridge-cum-barrage** leads connecting road to **Afzalpur & Javergi Taluks**. After completion of **bridge-cum-barrage construction**, the maximum water level comes very nearer to the temple and town. water bodies near by the temple & town leads to breeding of mosquito & and cause health hazards. The people **staying** surrounding the temple & town may be rehabilitated. It is known fact by the back history that last year **Bhima river** over flooded and about 6 people along with live stock washed away. Major care should be taken to protect the floods & proper stone pitching is to be done along the bank of back water of river. Further this back water area is to be developed for **Boating facilities** to the **tourist /pilgrims** who are coming from deferent states.

The *Development of Gangapur temple* is very important since this place considered as *Dakshina Kashi*. There is *Jathra mahotsava* around **6** months in a year. Apart from this more pilgrims are visiting this *Kshetra* on every thursday of the week and full Moon day to perform *auspicious poojas*. More number of pilgrims are coming from neighboring states. During *Jatra mahostava* the pilgrims may be increased 0.5 lakh to 1.0 lakh per day.

The historic and religious place *Datta Gangapur* needs improvements in all aspects. The river water can be used for drinking purpose after necessary water treatment and distribution network. At present the people of Gangapur & pilgrims coming to this place are using for their nature calls along the bank of the river and whole area is stinks with bad smell and whole *river water* will be *polluted*. The proper care should be taken for making good sanitation system with treatment plant.

*Dharma Shala / Yatri nivas* are to be constructed for the accommodation of **pilgrims** who are coming to this holy place with good water supply and sanitation system.

Now there is *one small bus shelter in the Gangapur town*. It has become *very old*. The slab of this shelter is *leaking during the rainy season* and it needs *major repair*. *It is not safety to the pilgrims for waiting the buses in this bus shelter*. There is *no space for parking the buses* near by this *bus shelter*. Number of buses are flying daily from this place to the part of the

country i.e. *Maharashtra, Andrapradesh, Tamilnadu* states as well as through out *Karnataka state*. Due to insufficient of space many buses are being parked beside of the road in the haphazard manner, which create very inconvenient to the pilgrims to reach the temple.

Apart from this many tourists are coming to this *Kshetra* through their private vehicles like *tracks / tata sumo / jeep / cars / tempu* etc. from long distances. There is no space for **parking these vehicles**. The vehicle drivers are parking their vehicles along the road in a haphazard manner, which has become very inconvenient to the pilgrims to go to the temple. Proper parking area is to be provided for these private vehicles with necessary dormitory facility. Further **one bus stand** is to be constructed near by temple by providing facilities like *shopping arcade, cafeteria and dormitory etc.* Big parking space is to be provided for parking of buses with necessary suitable bus depot.

In this connection the *Dattatreya temple committee* had made a *meeting* in the *Gangapur town* in a chairmanship of *Deputy Commissioner Gulbarga*, to develop this *Gangapur Kshetra* in a proper manner, like **Dharmastala / Sringeri** and **other pilgrims** in the state. Taking into consideration that thousands of pilgrims are coming daily to this temple from varies states ie *Maharashtra, Andhra Pradesh Tamil Nadu & Karnataka*, The *temple committee* has decided for total development of this temple by making evacuated the houses

surrounding 200 mtrs of the temple. All the roads connecting the temple are to be widened and asphalted. Further it is also decided by the temple committee to construct a ***bus-stand*** having a facilities of ***shopping arcades, cafeteria & dormitory*** with proper drinking water facilities & drainage system.

## **2. MASTER PLAN**

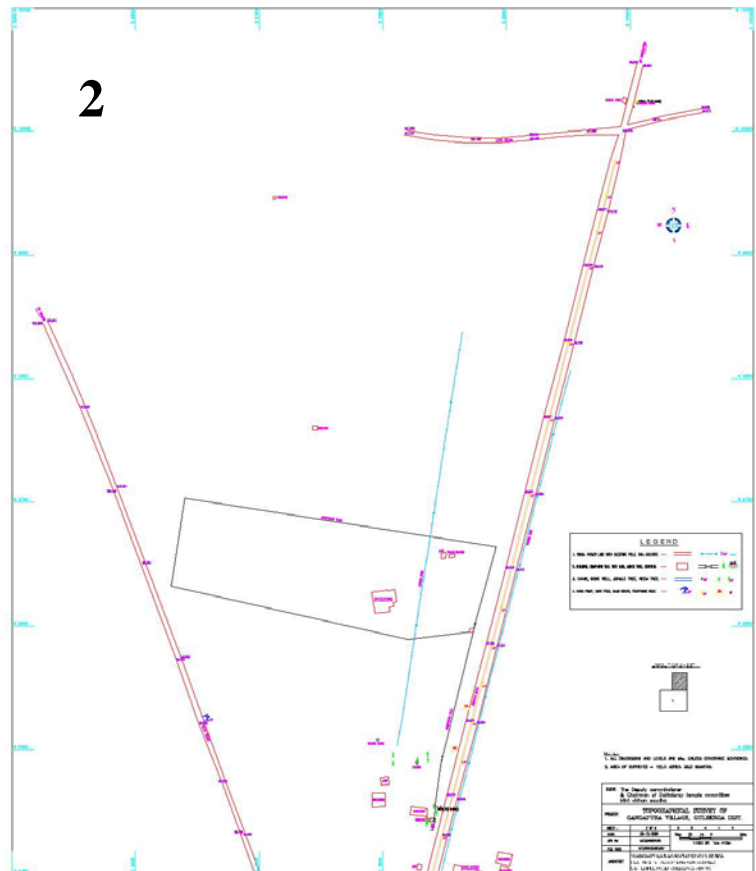
The temple committee decided further for preparation of ***Master plan*** for total development of the temple by making provision for ***rehabilitation*** for the houses who are staying within 200 mtrs surrounding by the temple and to make provision for construction of

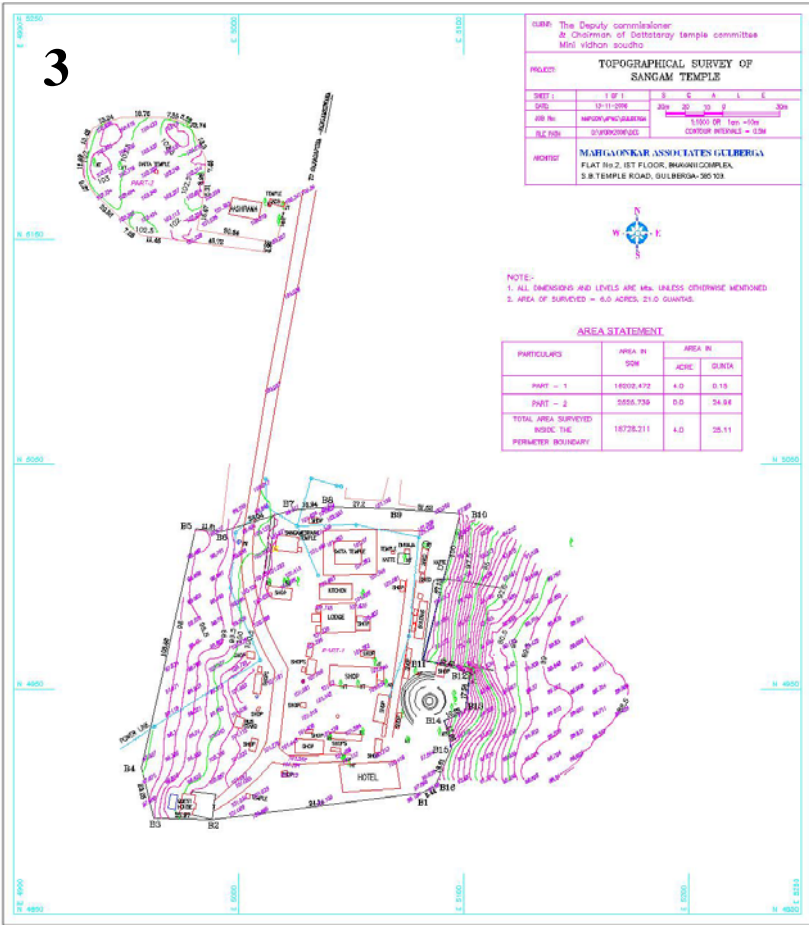
- ***Yatri nivas***
- ***Bus-stand with Bus-depot***
- ***Widening of road with asphaltting***
- ***Sufficient water supply & sanitation***
- ***Recreation . boating. wonder world, etc,***
- ***Housing layout.***
- ***Bank / post /telegraph /police station, etc,***

As such the total station survey was conducted for preparation of the ***Master plan***. About ***130 acres*** of land has been surveyed & demarcated the important places.



Contour Maps 1,2&3





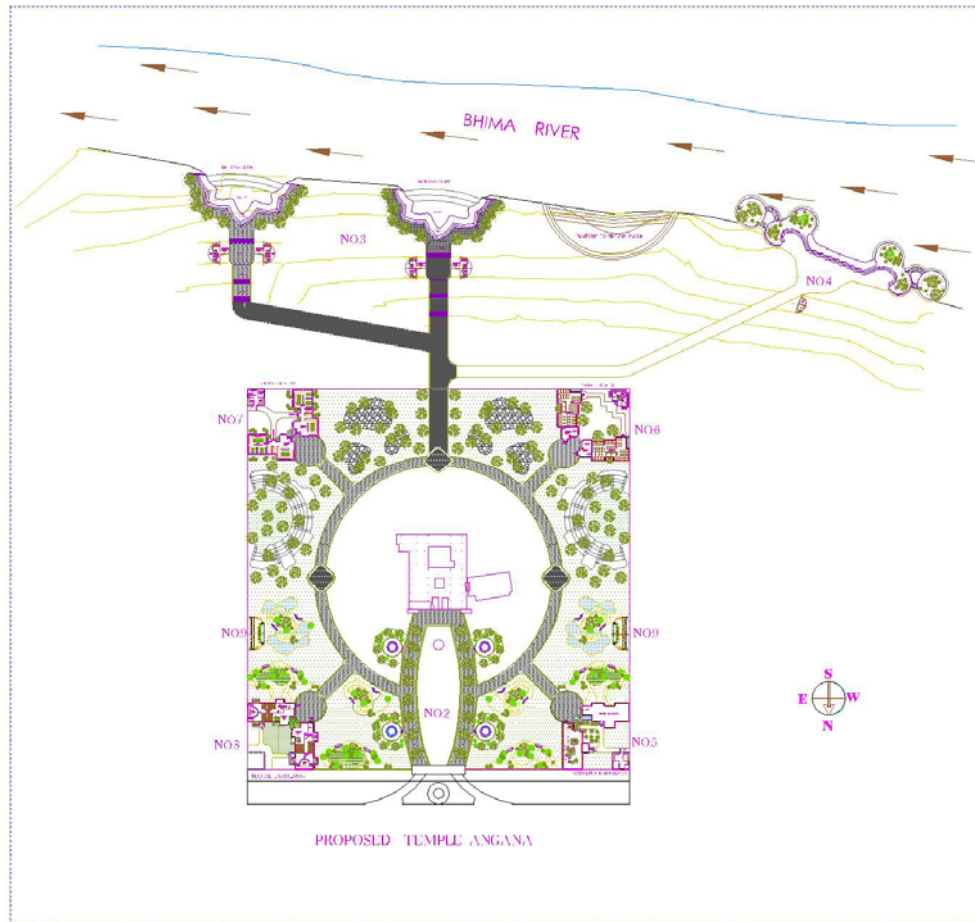
Taking into consideration of the decision of *Datta temple committee*, the Master plan has been prepared.



## MASTER PLAN

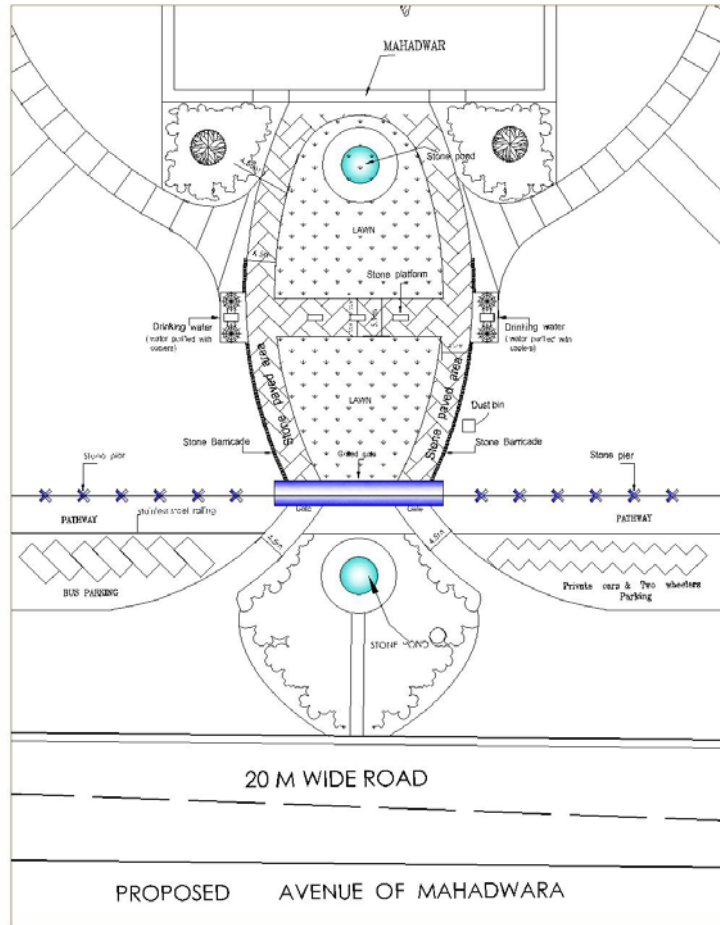
### 3. Provisions in the Master Plan

1. The avenue is created for the full view of mahadwara & temple at a distance of 200 mtr with widened roads & gates for the entry of temple

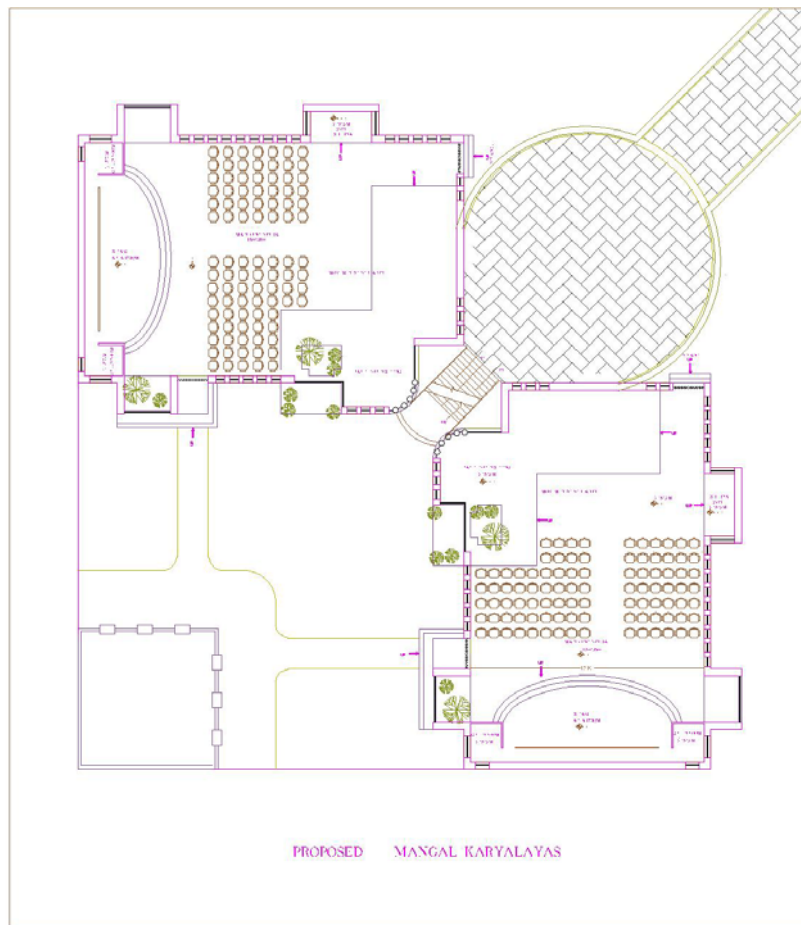


premises at front & back along with necessary footpaths.

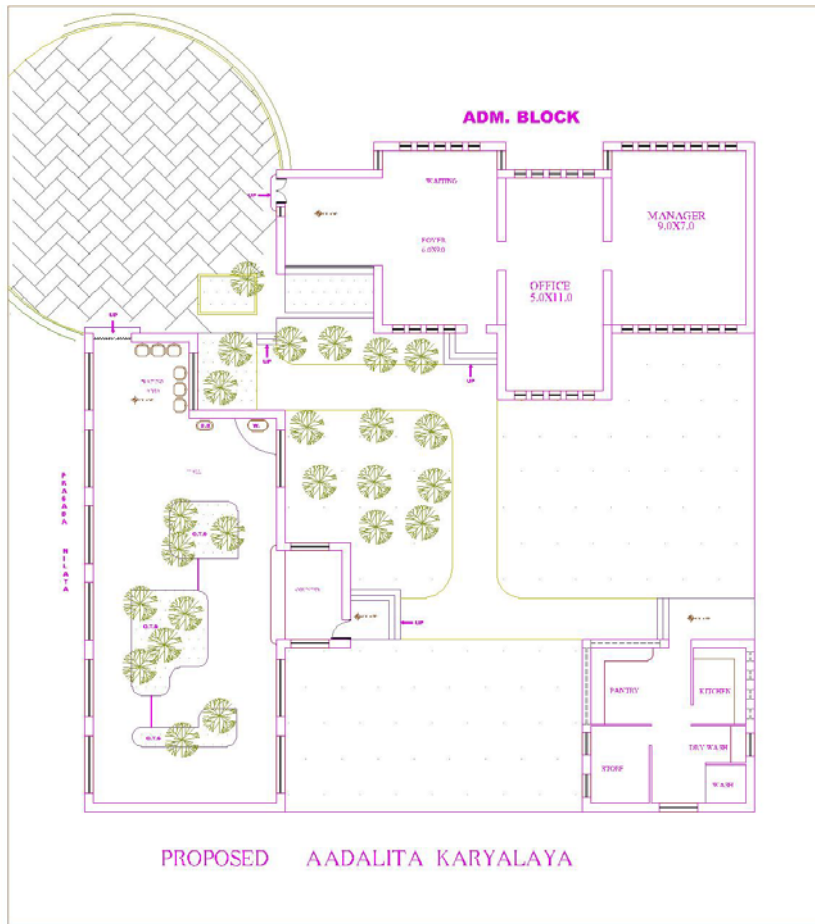




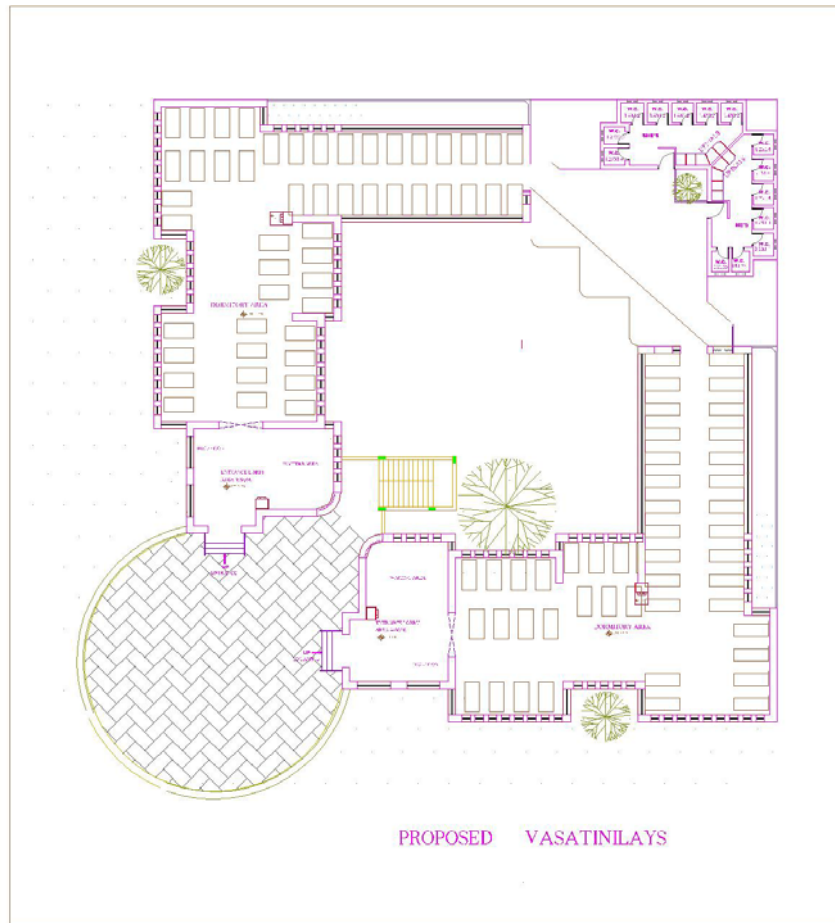
2. The provision has been made in the master plan for kalyan mantap at front right side of the temple for arranging marriages & other religious functions which includes function hall with stage, green rooms, dining hall, kitchen with sufficient bath/toilets & washing places etc.



3. The provision has been made for prasada nilaya at front left side of the temple to receive the prasada in rows by standing queue with a office, kitchen & pantry etc.

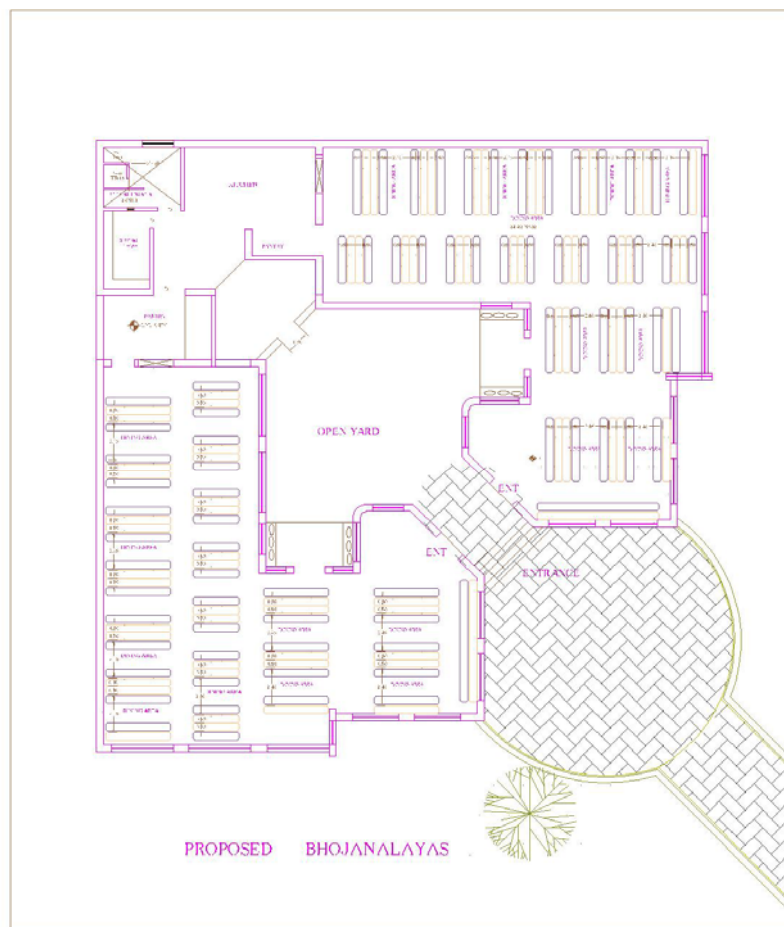


4. The provision has been made in the plan for dormitory in the left back side of temple for the stay of pilgrims with sufficient bath & toilet facilities.

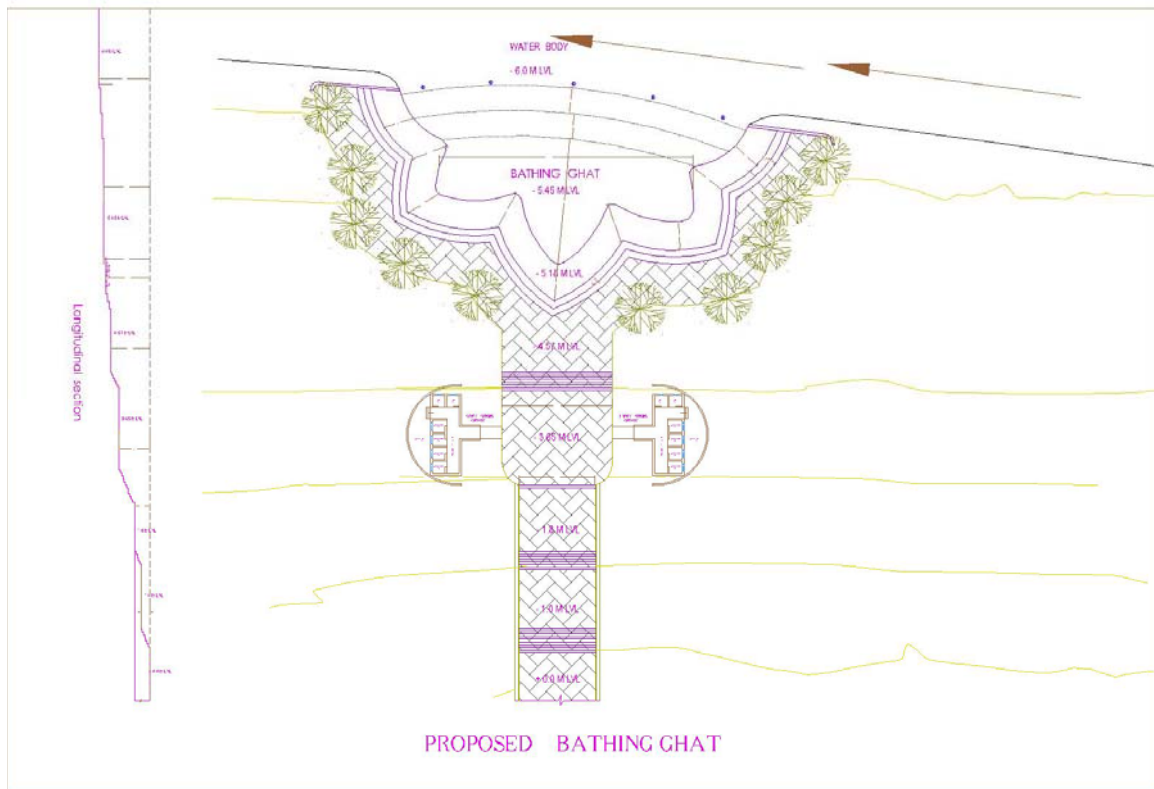


5. The provision has been made in the plan for the bhojanalaya at the right back side of the temple with dinning hall, sitting plat forms washing area, kitchen, and pantry with sufficient drinking water facilities.

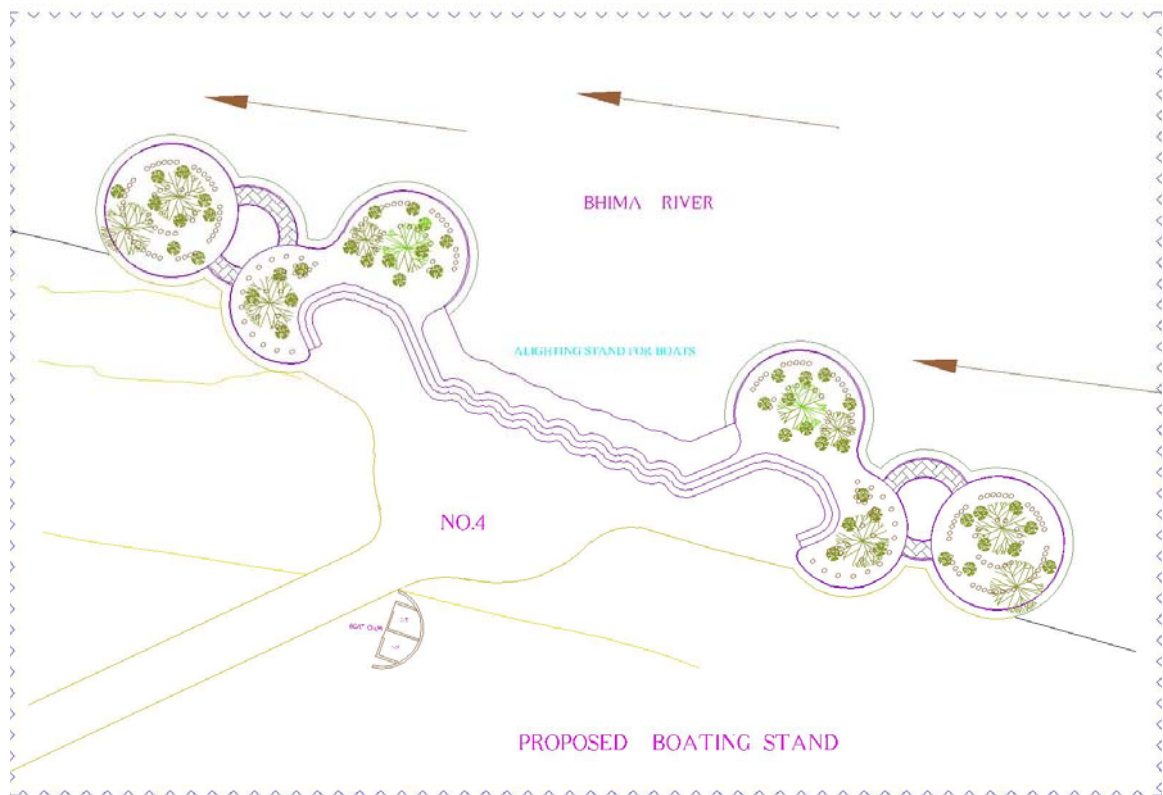
Further bath & toilet facilities have been made in between these blocks separately for gents & ladies.



6. The provision has been made in the plan for bathing ghats for gents & ladies with necessary toilet facilities along the Bank of River of back side of temple.
7. The provision for plat forms is made in the plan for performing poojas near by bathing ghats.

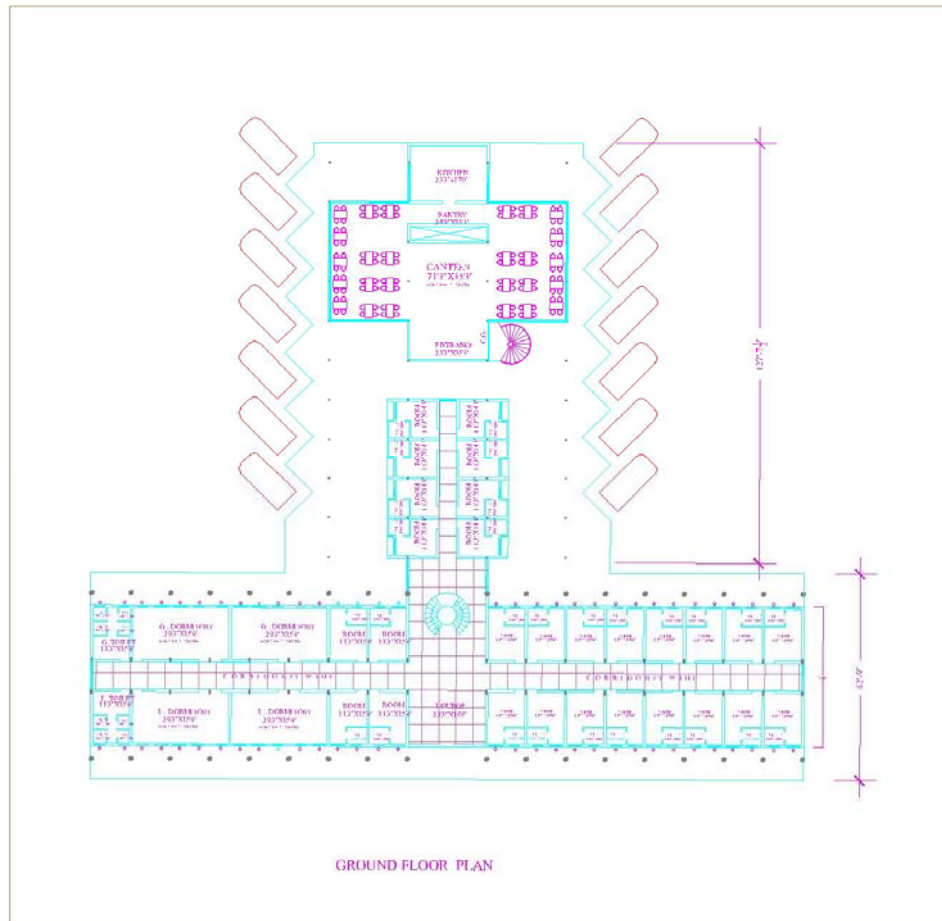


8. Boat club has been provided with office, store, bath, toilet & cafeteria for enjoying boating facilities to the pilgrims.



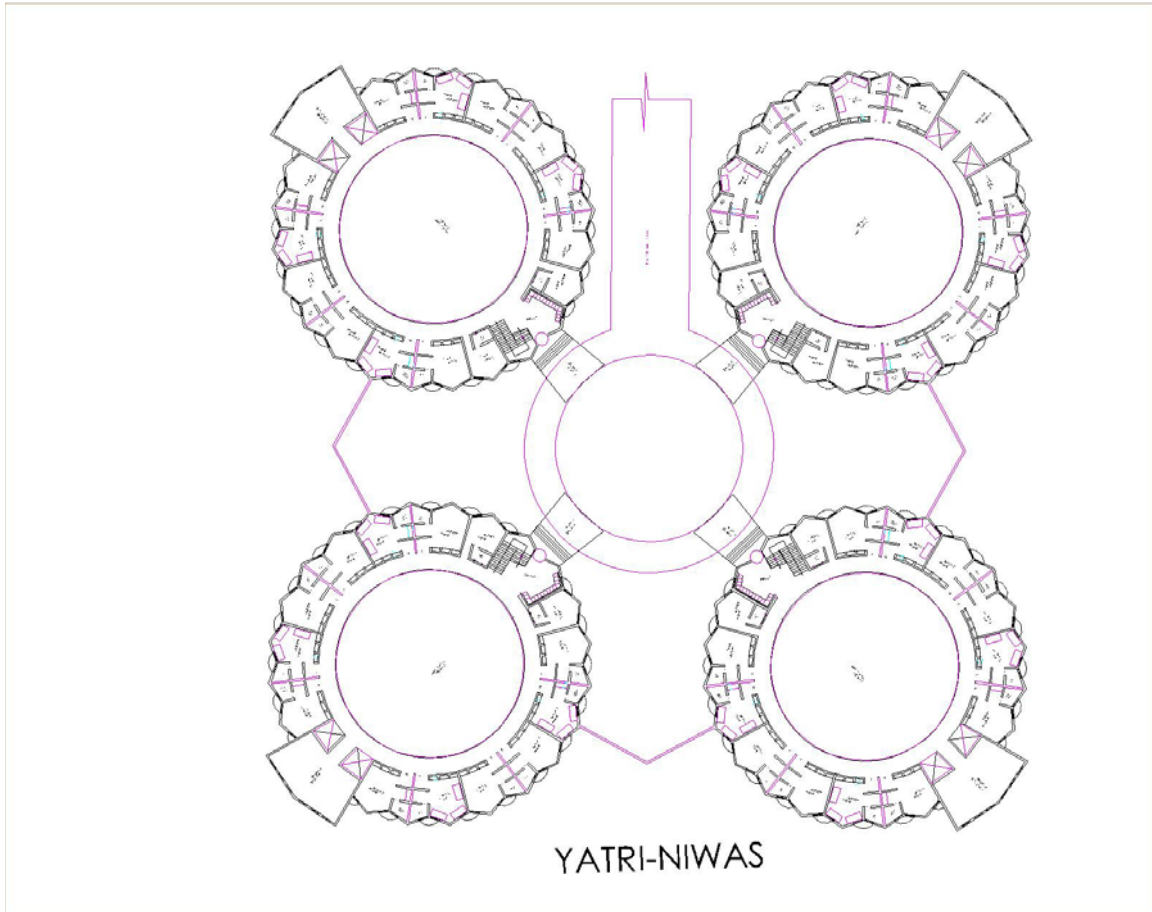
Apart from the above facilities the provisions have been made in master plan for.

1. Bus-stand with shopping arcade, cafeteria, & dormitory with sufficient parking area for parking the buses along with bus-depot are provided in the plan.





2. Provision for Yatri nivas with sufficient parking area for the private vehicles who are coming from different states for this Kshetra is made.

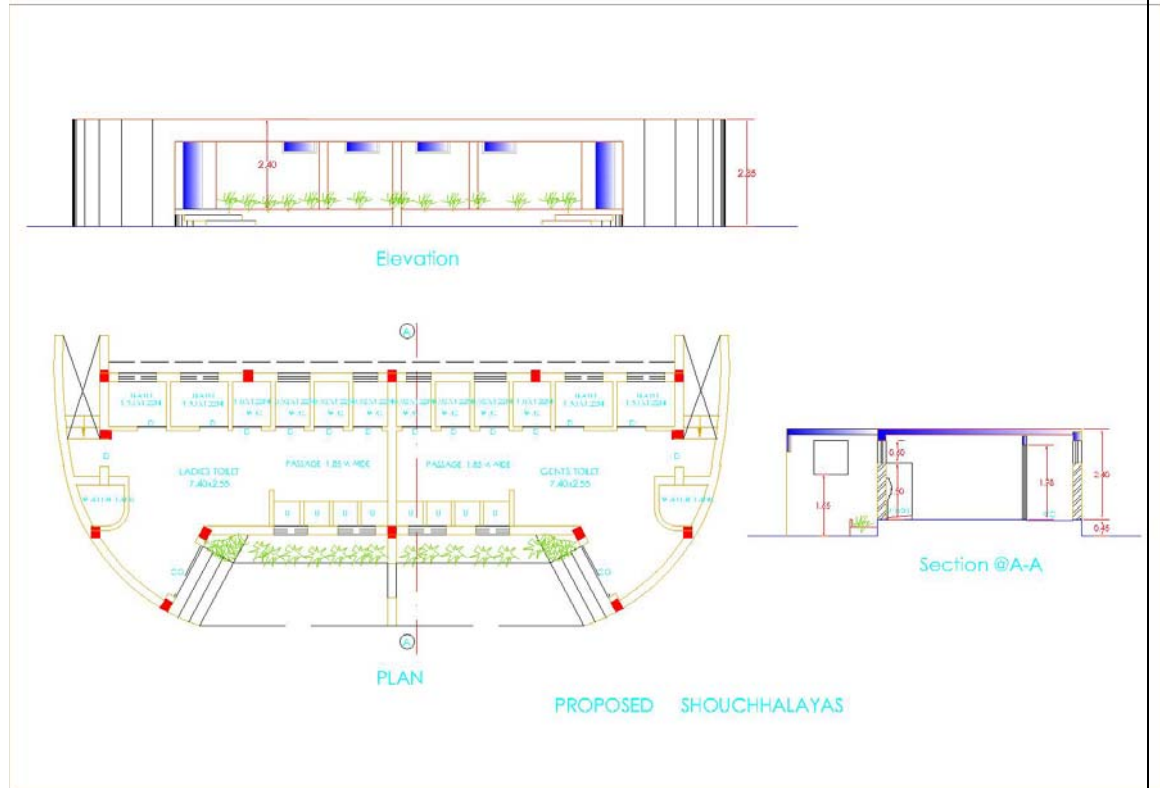


- 11 Overhead water tanks are proposed to supply sufficient water facilities to the tourists.
- 12 Trees are to be planted at dividers to create natural shelters & for healthy atmosphere along with drinking water facilities. The wet areas are to be separated to maintain the cleanly ness.



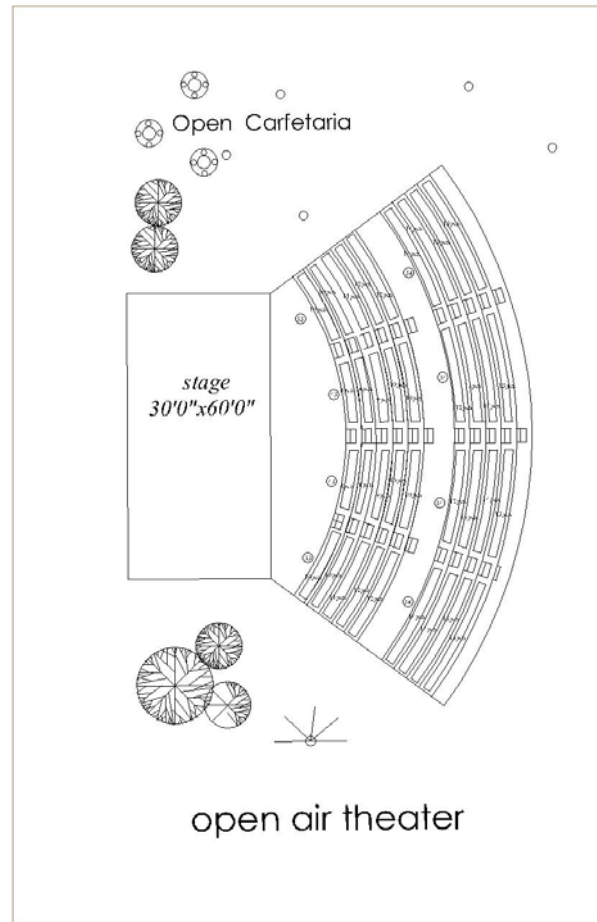
- 13 Paved areas are to be connected to drain water for rainwater harvesting pits.

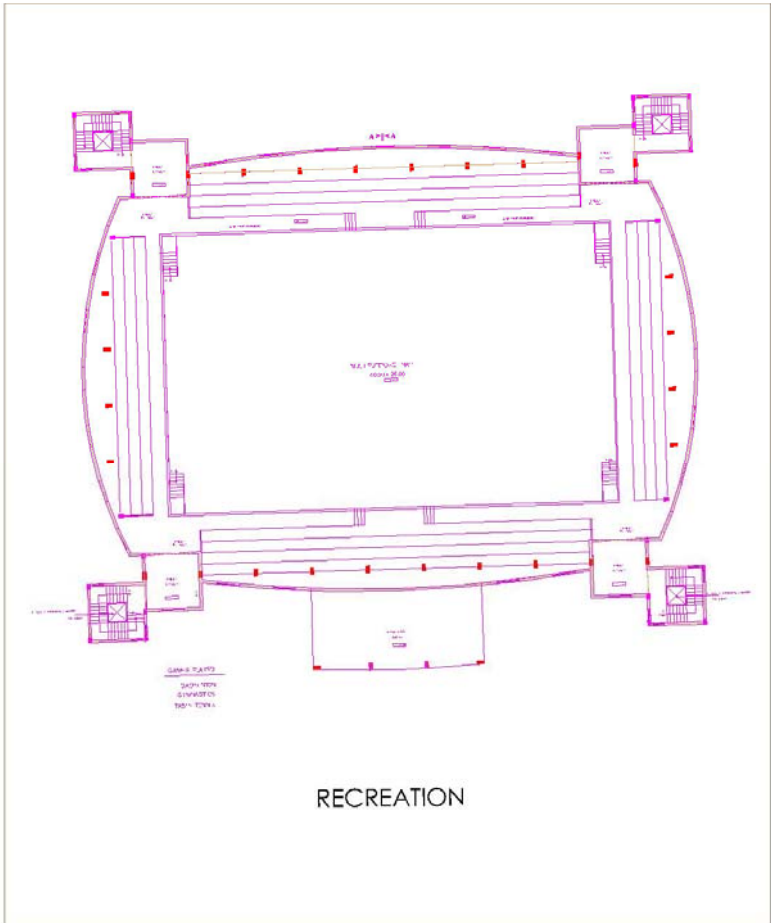
- 14 The sufficient bath & toilet facilities are to be provided as per the requirements of the pilgrims & distributed to the whole temple premises & they are connected properly to the bio -gas plants.

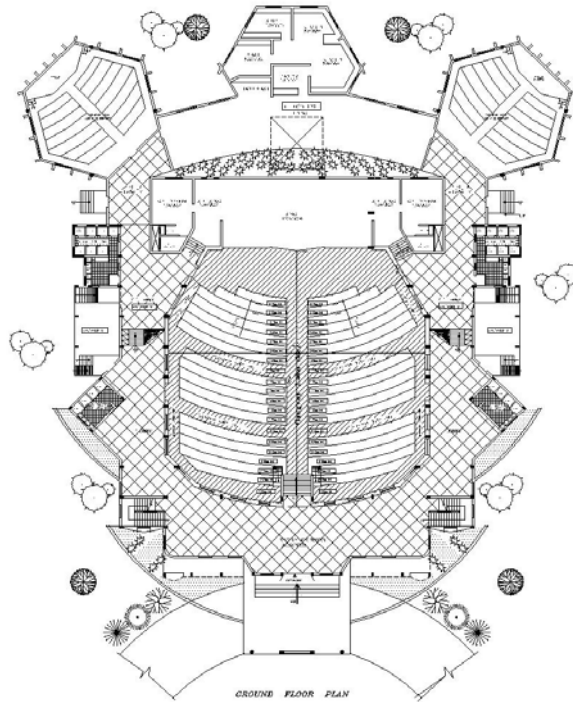


- 15 Proper & sufficient lighting arrangements are to be made along the roads, bathing ghats, pooja platforms, boating club & surrounding of temple.
- 16 The provision for housing facilities have been made in the plan for rehabilitation of the house people who are losing their houses in 200 mtr surrounding area of temple & for others.

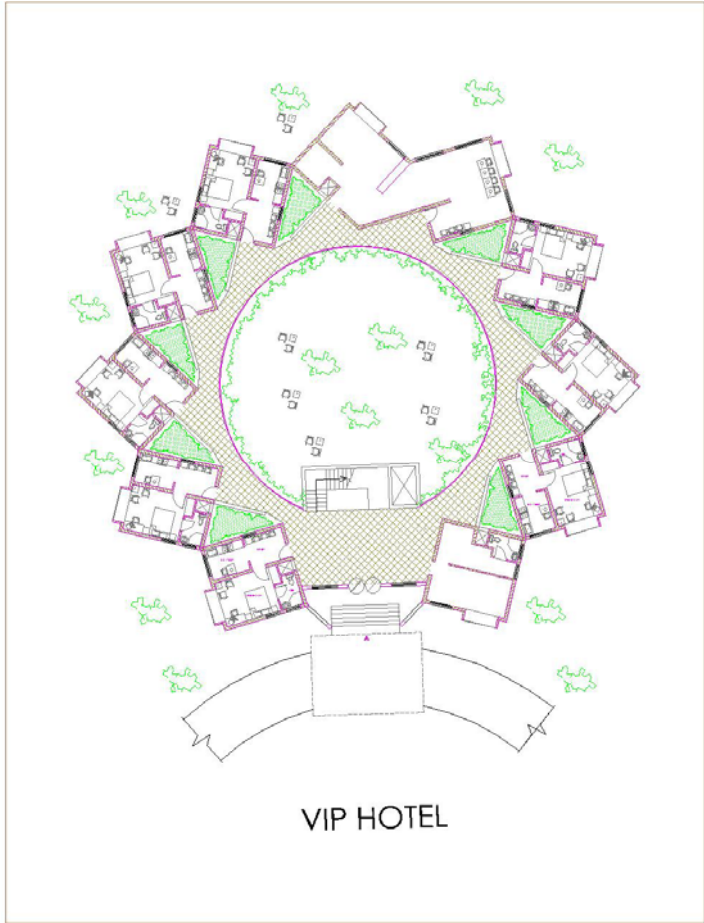
- 17 The provisions for open-air theatre, recreation hall, auditorium, V.I.P hotels, departmental stores residential quarters are made in the plan.



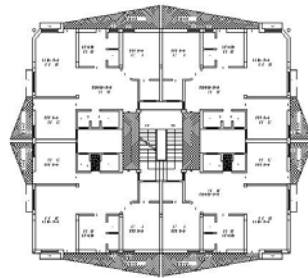
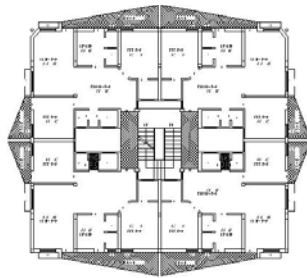
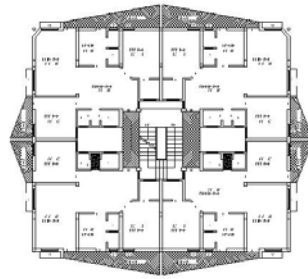
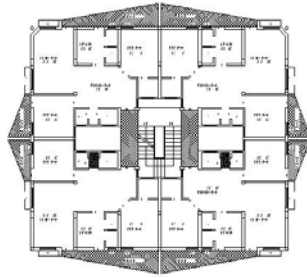




# AUDITORIUM

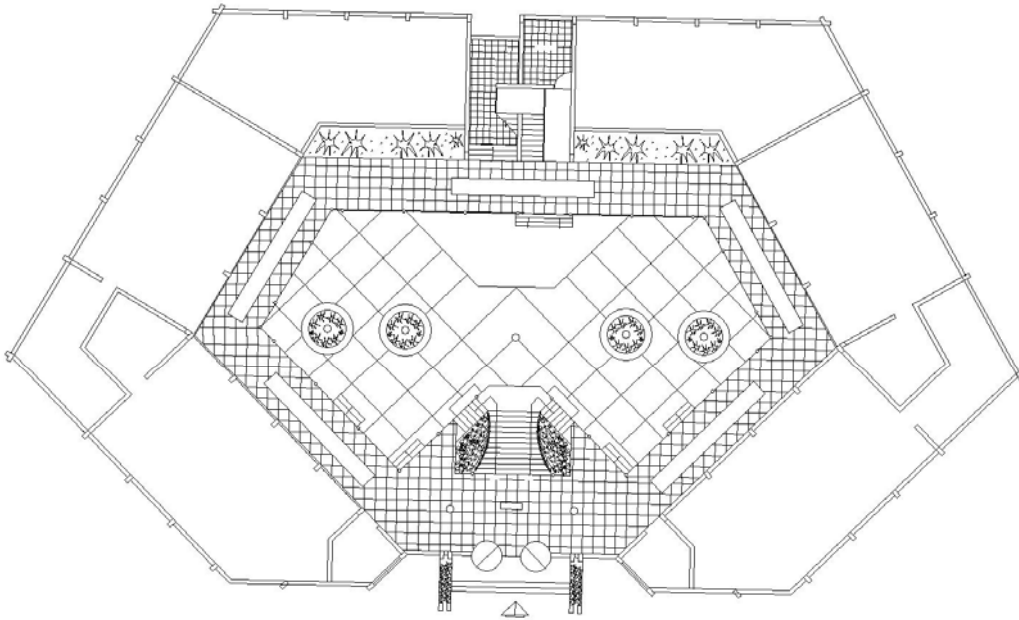


VIP HOTEL



## RESIDENTIAL QUARTERS





DEPARTMENTAL-STORES

**PROVISIONAL ABSTRACT ESTIMATE FOR DEVELOPMENT OF  
SRI KSHETRA DATTATREYA TEMPLE**

**AT GANGAPUR, TALUK: - AFZALPUR, DIST: - GULBARGA.**

\*\*\*\*\*

<b>SL.No</b>	<b>PARTICULARS</b>	<b>AMOUNT IN LAKHS</b>
01	Formation of Roads	60.00
02	Construction of C.C. Side Drains & Culverts	25.00
03	Providing H.T. power supply and street light fitting	50.00
04	Providing water supply arrangements	50.00
05	Providing Sanitation arrangements	30.00
05	Construction of Compound wall	20.00
06	Construction of Entrance Arch and fixing of Entrance Gates	10.00
07	Providing & fixing of interlock for pavements & paved parking	10.00
08	Construction of of Mangal Karyalaya	140.00
09	Construction of Bhojanalaya	180.00
10	Construction of Vasati Nilaya	150.00
11	Construction of Aadalita Karyalaya	50.00
12	Construction of Boating Club	150.00
13	Construction of Bathing Ghats	100.00
14	Construction of Yatri Nivas	200.00
15	Construction of Bus-Stand	100.00
16	Construction of Bus-Depot	100.00

17	Construction of Open air Theater	100.00
18	Construction of Recreation Center	75.00
19	Construction of Auditorium	100.00
20	Construction of VIP Hostel	100.00
21	Construction of Residential Quarters	100.00
22	Construction of Departmental Stores	75.00
23	Provision for rain water Harvesting	10.00
24	Construction of Sulab Sauchalaya	15.00
25	Land Acquisition 100 Acres for Rehabilitation & Feature Development of Temple	1000.00
	<b>TOTAL AMOUNT</b>	<b>Rs 3000.00</b>

## 4. TECHNICAL DATA

### Formation of Roads, Drains, Culverts

It is proposed cement concrete road with murrum cushioning of 0.45m, and compacting with a roller after watering the surface, then a bed concrete 0.10m thick is laid finally covered by cement concrete 1:2:4 proportion and a thickness of 0.15m

Where as Cement Concrete side drain are assumed on either side of the road along the pathways, these drains are connected to main drain to dispose off the water.

Necessary culverts are provided where side drains are crossing the main & sub main roads. The culverts are built up in stone masonry with cc bed and covered with deck RCC slab of designed thickness.

### Tapping of HT & LT power lines

This needs power lines & installation of Transformers & fixing up the Street lights, High mast light poles etc.,

### Water supply Arrangements

Over head water tanks are proposed. Main water pipe is to be laid from proposed Barrage & connected to the water treatment plant with necessary distribution network.

### Construction of Compound wall

It is proposed to construct the compound wall to safe guard the Temple Premises.

### Archways & Gates

Constructions of Entrance Archways & Gates are to be kept in provision, the entrance arch gives a grand look to entrance of the Temple. Along with security rooms & check posts.

### Interlock for Pavements & Paved Parking

Interlock Pavement to the foot path is necessary to maintain road clean from dust & makes pedestrians to walk over it, same as a proposal for parking area is to be developed with heavy duty pavers.

## **5. INFRASTRUCTURE PROVIDED AS FOLLOWS**

Solar Lighting: Provision for solar lighting is advisable positively installation of power street lamps apart from general lighting, this reduces the cost in electric bills, more over a subsidy from 20 to 40 % can be avail, from the power companies. Installation of solar product is growing fast which is also eco-friendly. It will also a unique project in its kind in the Gangapur Town.

Rain Water Harvesting: As we all know about the climatic condition of Gangapur, the temperature in summer always rises due to this heavy temperature normally the water table almost goes below from normal position and much of the bore well goes dry. To recharge these dry bore wells it is very necessary to maintain the water table this can be only done by rain water harvesting by constructing huge underground tank near by the bore wells or allowing the rain water to flow toward the dry bore wells this help a lot.

Parking Facility : separate places are shown for parking of vehicles for easy movement of pilgrims.