



Subscribe to Caron Connections, our free e-newsletter.

Enter your e-mail address

Subscribe

[yarn](#) [free projects](#) [where to buy](#) [links](#) [learning](#) [contact us](#) [caron connections](#) [news](#) [latch hook](#) [blog](#)



Fuzzy Kitty

with



designed by KJ Hay

TECHNIQUE USED: Knit



FINISHED MEASUREMENTS

Kitty measures approximately 13"/33cm tall.

MATERIALS

[Buy Now](#)

[Caron International's Dazzleaire](#) (80% Acrylic/20% Nylon, 3oz/85g, 155yds/141m)

Shown in: #0007 Linen (A), #0004 Clay Pot (B), and #0011 Russett (C), 3 oz/85g each; #0014 Black (D), small amount

[Buy Now](#)

[One pair size U.S. 7\(4.5mm\) needles](#) or size needed to obtain gauge

Stitch holders

Stitch markers

Polyester fiberfill

One pair cat safety eyes, 18mm diameter (optional)

One triangular safety nose, 18mm (optional)

Yarn needle

GAUGE

In Stockinette st, 18 sts and 24 rows = 4"/10cm.

Gauge is not critical for this project.



click image to enlarge

- Caron Yarns
- Simply Soft®
- Simply Soft® Brites
- Simply Soft® Chunky **NEW**
- Simply Soft® Collection **NEW**
- Simply Soft® Eco
- Simply Soft® Heather
- Simply Soft® Paints
- Simply Soft® Party **NEW**
- Simply Soft® Shadows

Craft & Rug Yarn

Dazzleaire **NEW**

Natura®

One Pound

Wintuk®



Check out our newest yarns!

Caron Latch Hook Kits

Caron® Classics

Natura®

WonderArt®



ABBREVIATIONS

K1-f/b: Knit next st, then knit it through backloop. (1 st increased)

M1: Lift strand between needles to LH needle and knit strand through back loop. (1 st increased)

K2tog: Knit 2 stitches together. (1 st decreased)

Ssk: Slip next 2 stitches, 1 at a time, to RH needle as if to knit, return sts to LH needle in new orientation, knit 2 stitches together through back loop. (1 st decreased)

S2kp2: Slip next 2 sts to RH needle together as if to knit 2 together, knit 1, pass 2 slipped sts over knit st. (2 sts decreased)

charts

 **Printer Friendly PDF**

STITCHES USED

Stockinette stitch (St st): Knit on RS, purl on WS.

Stripe Pattern: Working in St st, *[work 4 rows with B, 2 rows with C] twice, work 6 rows with B, then 2 rows with C; rep from * for Stripe Pattern.

NOTES

Body is worked in 2 pieces, Front and Back, then sewn together around side edges. Ears, Tummy, Muzzle, and Tail are worked separately and sewn to Body.

Front and Back can be made by following written instructions or chart. Read chart from right to left on RS rows, and left to right on WS rows. With the exception of Body and Head charts, all charts begin on a WS row.

When working stripe Pattern, carry color not in use up outside edge.

HELPFUL

Customize your cat. Print out the blank charts and color them to match your cat. Then work from written instructions or chart, changing colors as in your customized charts.

FRONT**Leg (make 2)**

With A, CO 11 sts.

Row 1 (WS): Purl.

Row 2: *K1-f/b; rep from * across—22 sts.

Rows 3–7: Work even in St st.

Row 8: [Ssk] 6 times, [k2tog] 5 times—11 sts.

Rows 9–11: Work even in St st.

Rows 12–27: Begin Stripe patt; work even.

Place sts of first Leg on a st holder and cut yarn. Keep sts of second Leg on needle.

Body

Join Legs (RS): Continue in Stripe patt as est in Legs, knit across second Leg, CO 3 sts, knit across first Leg from st holder—25 sts.

Row 1 (WS): Purl.

Row 2: K1, M1, k9, M1, k5, M1, k9, M1, k1—29 sts.

Row 3: Purl

Row 4: K1, M1, knit to last st, M1, k1—31 sts.

Row 5: Purl.

Row 6: K11, M1, k9, M1, k11—33 sts.

Rows 7–21: Begin Stripe patt; work even.

Row 22: K2tog, knit to last 2 sts, ssk—31 sts.

Rows 23: Purl.

Rows 24 and 25: Rep Rows 22 and 23—29 sts.

Place sts on st holder and cut yarn.

Arms (make 2)

With A, CO 5 sts.

Row 1 (WS): Purl.

Row 2: *K1-f/b; rep from * across—10 sts.

Row 3: Purl.

Row 4: K2, [M1, k2] 4 times—14 sts.

Rows 5–7: Work even in St st.

Row 8: [K2tog] twice, knit to last 4 sts, [ssk] twice—10 sts.

Row 9: Purl.

Rows 10–25: Begin Stripe patt; work even.

Place sts of first Arm on st holder and cut yarn. Keep sts of second Arm on needle.

Head

Join Arms: Continuing in Stripe patt as est in Body, work across sts of first Arm and Body from st holders, then sts of second Arm, as follows: [K4, ssk, pm] 3 times, k13, [pm, k2tog, k4] 3 times—43 sts.

Shape Shoulders

Row 1 (WS): Purl.

Row 2: [Knit to 2 sts before next marker, ssk, slip marker (sm)] 3 times, [k to next marker, sm, k2tog] 3 times, knit to end of row—37 sts.

Row 3: Purl.

Rows 4–9: Rep Rows 2 and 3—19 sts. Remove markers while working Row 8.

Row 10: [Ssk, k1] 3 times, k1, [k1, k2tog] 3 times—13 sts.

Rows 11–13: Begin Stripe patt; work even.

Shape Head

Row 14: K1, M1, knit to last st, M1, k1—15 sts.

Row 15: Purl.

Row 16: [K1, M1] twice, knit to last 2 sts, [M1, k1] twice—19 sts.

Rows 17–20: Rep Rows 15 and 16—27 sts.

Rows 21–35: Work even in Stripe patt.

Row 36: [Ssk] twice, knit to last 4 sts, [k2tog] twice—23 sts.

Row 37: Purl.

Rows 38 and 39: Rep Rows 36 and 37—19 sts.

Row 40: Rep Row 36—15 sts.

BO.

BACK

Leg (make 2)

With A, CO 7 sts.

Row 1 (WS): Purl.

Row 2 (RS): K2, [M1, k1] 4 times, k1—11 sts.

Rows 3–11: Work even in St st.

Rows 12–27: Begin Stripe patt; work even.

Place sts of first Leg on st holder and cut yarn. Keep sts of second Leg on needle.

Work remainder of Back as for Front.

EARS (make 2)

Outer Ear

With B, CO 11 sts.

Row 1 (WS): Purl.

Row 2: Ssk, knit to last 2 sts, k2tog—9 sts.

Rows 3–8: Rep Rows 1 and 2—3 sts.

Row 9: Purl.

Row 10: S2kp2—1 st.

BO.

Inner Ear

With A, CO 7 sts.

Row 1 (WS): Purl.

Row 2: Ssk, knit to last 2 sts, k2tog—5 sts.

Rows 3 and 4: Rep Rows 1 and 2—3 sts.

Row 5: Purl.

Row 6: S2kp2—1 st.

BO. Place Inner Ear on top of Outer Ear, with RS of Inner Ear facing WS of outer Ear, so that purl side of Inner Ear is facing out. With B, sew side edges together.

TUMMY (optional)

With A, CO 13 sts.

Row 1 (WS): Purl.

Row 2: [K1, M1] twice, knit to last 2 sts, [M1, k1] twice—17 sts.

Row 3: Purl.

Row 4: K1, M1, knit to last st, M1, K1—19 sts.

Rows 5 and 6: Rep Rows 3 and 4—21 sts.

Rows 7–17: Work even in St st.

Row 18: Ssk, knit to last 2 sts, k2tog—19 sts.

Row 19: Purl.

Rows 20 and 21: Rep Rows 18 and 19—17 sts.

Row 22: [Ssk] twice, knit to last 4 sts, [k2tog] twice—13 sts.

Row 23: Purl.

BO.

MUZZLE

With A, CO 13 sts.

Rows 1 (WS)–6: Work as for Rows 1–6 of Tummy—21 sts.

Row 7: Purl.

Row 8: [Ssk] 3 times, knit to last 6 sts, [k2tog] 3 times—15 sts.

Rows 9 and 10: Rep Rows 7 and 8—9 sts.

Row 11: Purl.

Row 12: [Ssk] twice, k1, [k2tog] twice—5 sts.

Row 13: Purl.

Row 14: K2tog, k1, k2tog—3 sts.

Row 15: Purl.

Row 16: S2kp2—1 st.

BO.

TAIL

With A, CO 3 sts.

Row 1 (WS): Purl.

Row 2: K1, M1, knit to last st, M1, k1—5 sts.

Rows 3–8: Rep Rows 1 and 2—11 sts.

Row 9: Purl.

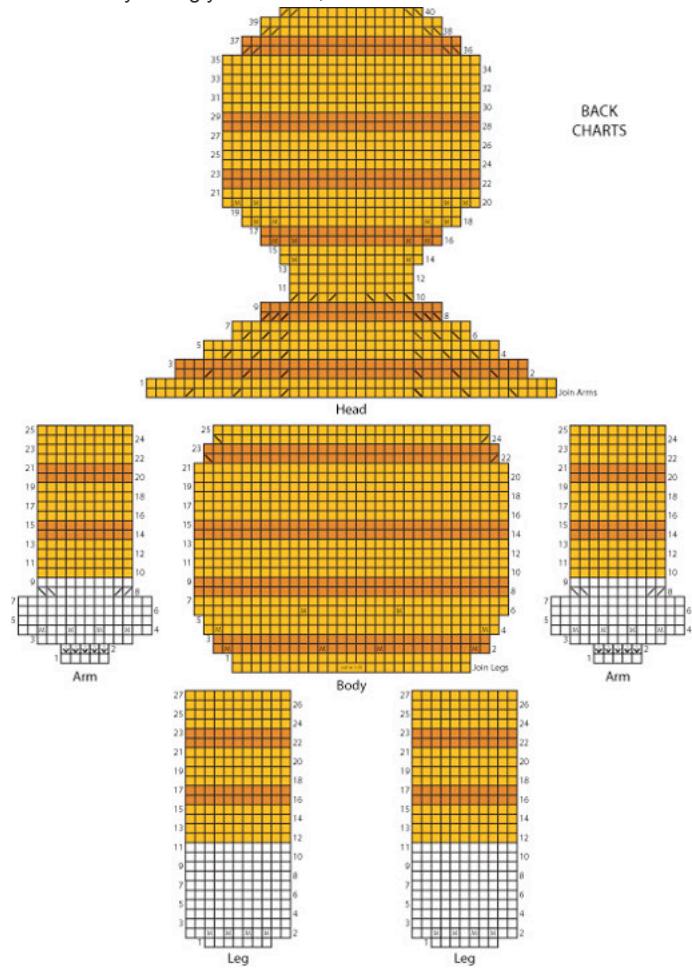
Rows 10–45: Begin Stripe patt; work even.

BO.

FINISHING

Refer to photos for placement of embroidery and pieces. With A, sew Tummy to center of Front Body. Attach nose to center of Muzzle, or embroider nose with D. With D, embroider straight st whiskers on either side of nose. Sew Muzzle to face, stuffing lightly with fiberfill before sewing final seam. Attach

eyes above Muzzle, or embroider eyes with D. With WSs of Front and Back together, sew side seams all the way around, stuffing with fiberfill as you go. With C, sew Ears to top of Head. Sew side edges of Tail together; sew Tail to back of Body. Using yarn needle, weave in ends.

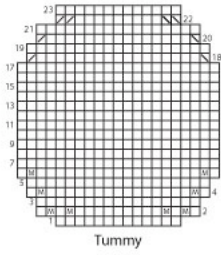
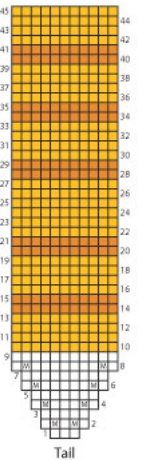
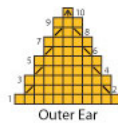
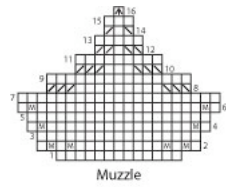
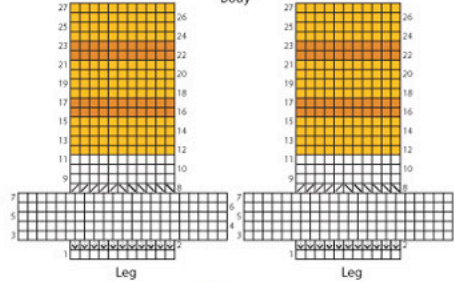
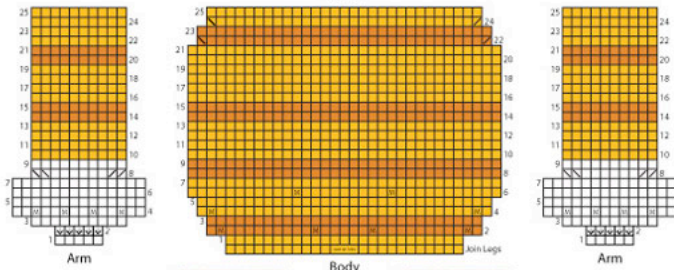
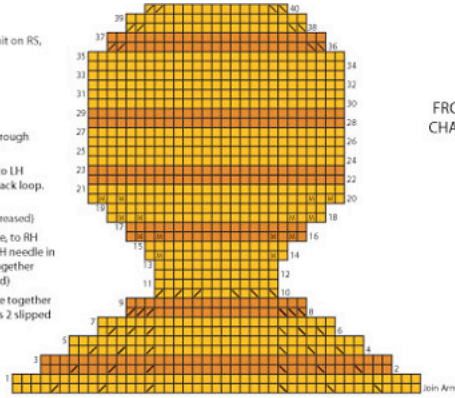


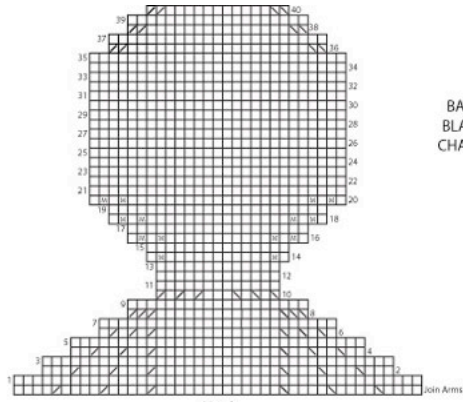
LEGEND

Except where otherwise indicated, knit on RS, purl on WS.

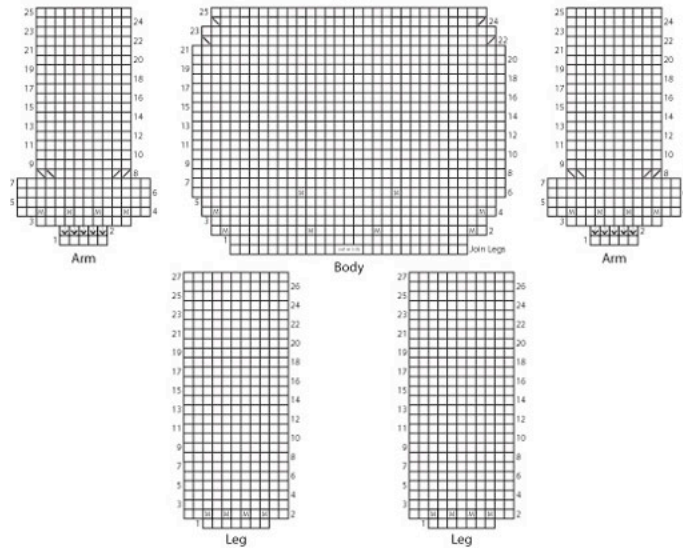
- A
- B
- C
- K1-l/b: Knit next st, then knit it through back loop. (1 st increased)
- M1: Lift strand between needles to LH needle and knit strand through back loop. (1 st increased)
- K2tog: Knit 2 sts together. (1 st decreased)
- Ssk: Slip next 2 stitches, 1 at a time, to RH needle as if to knit, return sts to LH needle in new orientation, knit 2 stitches together through back loop. (1 st decreased)
- S2kp2: Slip next 2 sts to RH needle together as if to knit 2 together, knit 1, pass 2 slipped sts over knit st. (2 sts decreased)

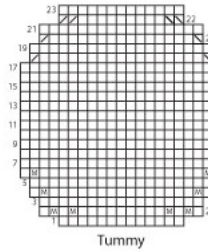
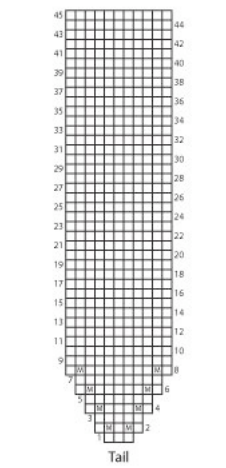
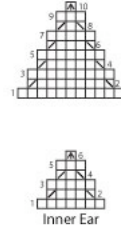
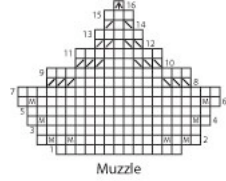
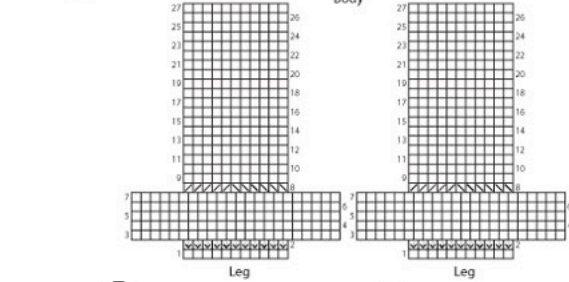
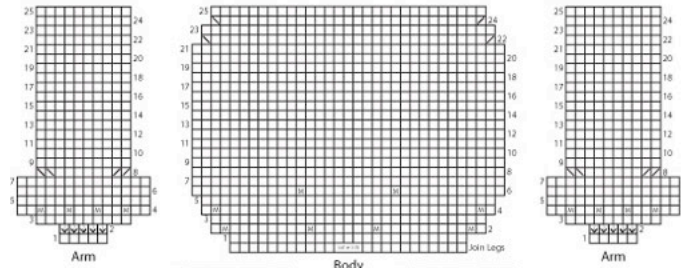
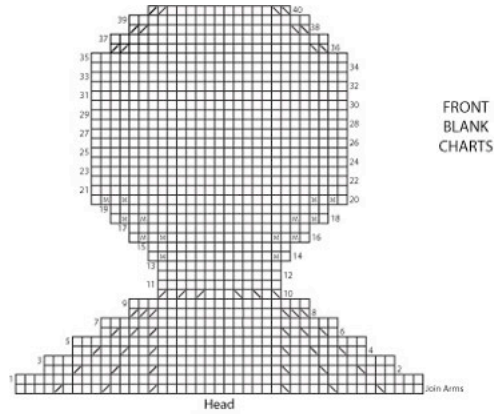
FRONT CHARTS





BACK
BLANK
CHARTS





|| Yarns || Free Projects || Where to Buy || Links || Learning || Contact Us || Caron Connections || News || Latch Hook ||

Visit Bond America online

©2011 Caron International