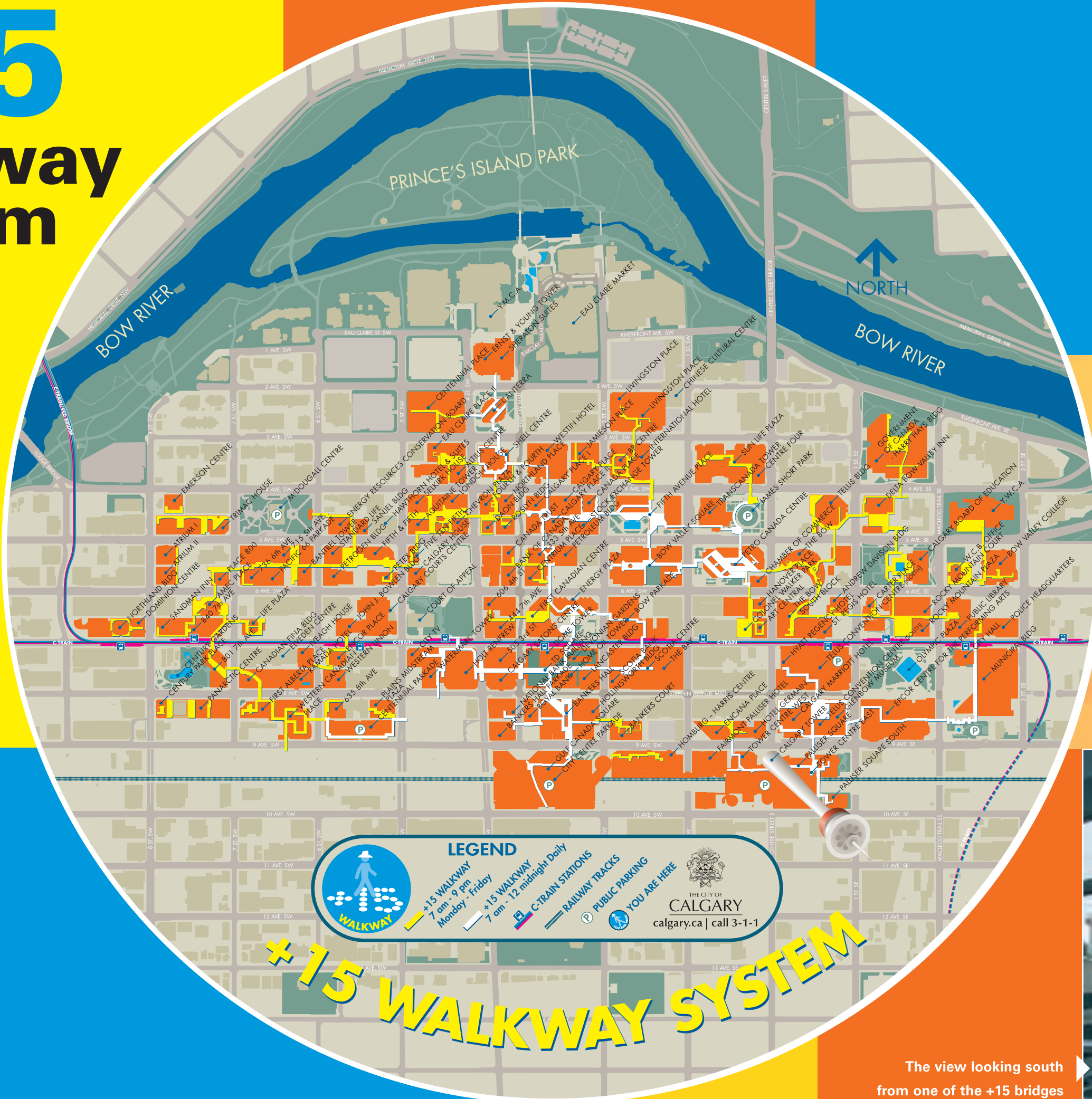


+15 walkway system



+15 WALKWAY SYSTEM

The view looking south from one of the +15 bridges over Barclay Mall.





This walkway system is the most extensive pedestrian corridor of its kind in North America

This is the official first +15 bridge built in 1970. It connects the Westin Hotel to Calgary Place across fourth Avenue S.W.

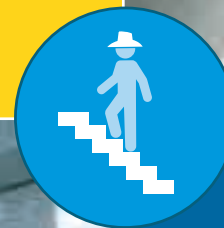
- Most of the bridges are built 15 feet or 4.57 metres above grade level and the traffic below, hence the name +15. The enclosed system is constantly monitored to ensure pedestrians enjoy comfortable temperatures regardless of Calgary's unpredictable weather outside.
- Calgary planners first conceived of the elevated walkway system in the late 1960s. It has since mushroomed into an extensive network consisting of 57 bridges and 16 kilometres of public walkways. Various retail businesses and services can be found throughout the network and artwork complements some of the walkways.



The architectural design of this bridge which is near the CPR tracks, symbolizes the numerous railway bridges in Calgary.

Overhead directional signs above bridge entrances match graphic borders encircling +15 pedestals maps. Signage above bridge entrances indicate the immediate destination beyond the bridge. Streets and avenues are named on signs at the centre of each bridge. Stairs leading off the +15 are marked by pictographs.

Calgary's first bridge of the new millennium connects the Telus Convention Centre buildings across Stephen Avenue Mall.



Business people and shoppers can be seen below this +30 bridge located inside Bankers Hall downtown.

The signage system

The signage system is designed to take the mystery out of the +15 in a way that is friendly and easy to understand. The icons of the system are based upon Calgary's history and characteristics.

The white cowboy hat has been symbolic of Calgary's western hospitality for the past 50 years, and conveys a warm welcome to use the +15 system.

The +15 map shows all bridges and walkways and their access to commercial buildings, hotels, public buildings and parking areas throughout the downtown core.



Maps of the +15 system are mounted on pedestals throughout the pedestrian walkway to guide you from building to building in the downtown core.



Traffic flows along Barclay Mall 15 feet below the +15 bridges.



West

West A mountain range is combined with the word West. The prominent view to the west of Calgary is the Canadian Rockies.

North

North Fish are combined with the word North, representing the Bow River, which borders downtown on the north. The Bow River is known for some of the world's best trout fishing.

East

East Fort Calgary is combined with the word East. The original fort site and interpretive centre border the city centre on the east.

South

South A turn-of-the-century train image is combined with the word South. The Canadian Pacific Railway tracks form a boundary on the south side of downtown.

The system provides a comfortable sheltered walkway where temperatures are regulated to provide a pleasant pedestrian environment.

