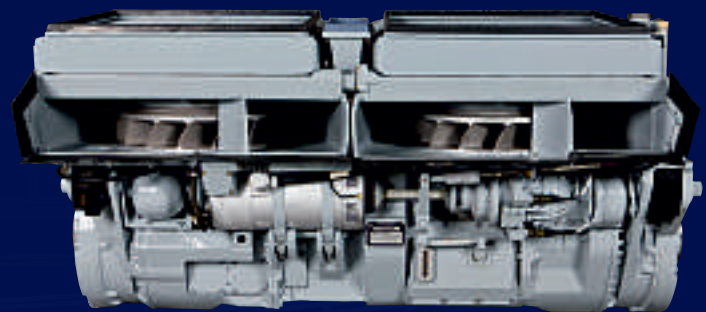


Innovative Power Transmission

ESM 350



**Modern Powerpacks
for T-72/T-90 tanks
new production and
upgrade programs**

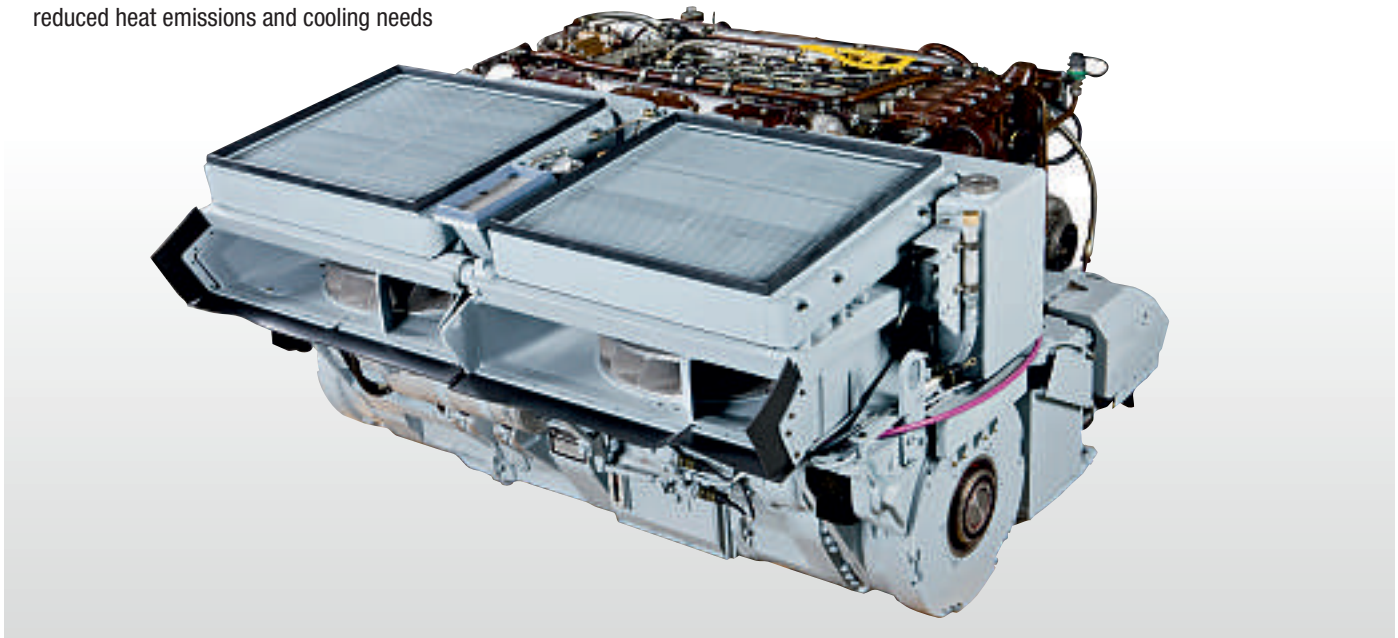
Powerpack ESM350 for T-72/T-90 and derivatives new production and upgrade programs up to 850 kW/1150 hp

Superior mobility by the addition of an automatic powershift transmission and increased engine power (up to 1150 hp)

- Top speed of 70 km/h and 23 km/h reverse, start-up on 60% slope for a 50 tons vehicle
- Increased vehicle speeds even with inexperienced drivers, especially in difficult terrain
- More intelligent use of engine power and elimination of driver error thanks to the electronic transmission control
- Increased operating range, reduced fuel consumption, reduced heat emissions and cooling needs

Enhanced operation in hot climatic conditions due to the high performance cooling system

- Drastically increased cooling air flow compared to conventional design
- Automatically and permanently optimized fan speed adapted to cooling needs to minimize power losses
- Increased engine lifetime due to a more stable engine coolant temperature
- Availability of full engine power even in extreme hot conditions
- Option to switch off the cooling fans for special operations such as fording



Transmission characteristics

- Fully automatic power shifting – 8 speed forward – 3 speed reverse with manual override
- Mechanical emergency gear shift system allowing vehicle drive without power supply
- Infinitely variable hydrostatic steering system actuated by a steering wheel
- Pivot on the spot feature
- Integrated multi-disk service and parking brake
- PTO for existing vehicle power units such as dynamo-starter, air compressor etc...
- PTO for fan drive with full digital speed control
- 200 kW PTO available for special applications
- Engine tow-start capability
- BITE and extended diagnostic plug for quick and easy failure analysis
- Electronic control unit with CAN bus

Various engine option up to 1200 hp

- Use of existing engine is feasible
- French
- Italian
- Polish
- Russian
- Other

Various engine options including French, Italian, Polish or Russian diesels up to 1150 hp



Complete vehicle integration work realized by SESM

- Easy integration process
- No changes to hull, only minor internal modifications
- No affect on the gun depression angle
- Improved mine protection, no more maintenance hatches necessary below vehicle



Improved vehicle availability due to the powerpack concept

- Integration of engine, transmission and cooling system in one single and very compact block
- Better reliability of the components compared to conventional equipment
- Exchange of the PP for maintenance purposes in less than one hour, even in field conditions
- Vehicle downtime in case of repair limited to one hour compared to several days with the existing vehicles



Advantages for fleet availability, logistics and total operating cost

- Better fleet availability resulting from high equipment reliability and quick PP exchange capability
- Simplified maintenance and spare parts logistics
- Focus on handling complete PPs for front line logistics instead of thousands of individual spare-parts and separate repair jobs
- Standardisation of powerpacks across various vehicles types like T-72, T-90 and their derivatives (AEV, ARV or AVLB)

One standard powerpack for all your vehicles (MBT, ARV, AEV, AVLB)

- Suitable for
MBTs T-72, T-90, T-91, PT-91, TR-125, M-84, etc...
ARVs BREM, WZT-3, etc...
AEVs MID, IMR, etc...
AVLBs BLT-T72, PMC-90, MTU-72, MTU-90, etc...
- In serial production for PT91-M Poland/Malaysia, WZT-4, MID-M and PMC-Leguan



Superior mobility especially in hot and difficult conditions, excellent fleet availability, improved combat effectiveness with limited financial investment

SESM, your partner for mobility upgrade programs



SESM 

67 rue d'Epluches • ST OUEN L'AUMÔNE • 95315 CERGY-PONTOISE Cedex, France
Phone: +33 (1) 34 48 37 00 • Fax: +33 (1) 34 64 55 43 • E-Mail: contact@sesm.renk.biz
SESM is member of the RENK group