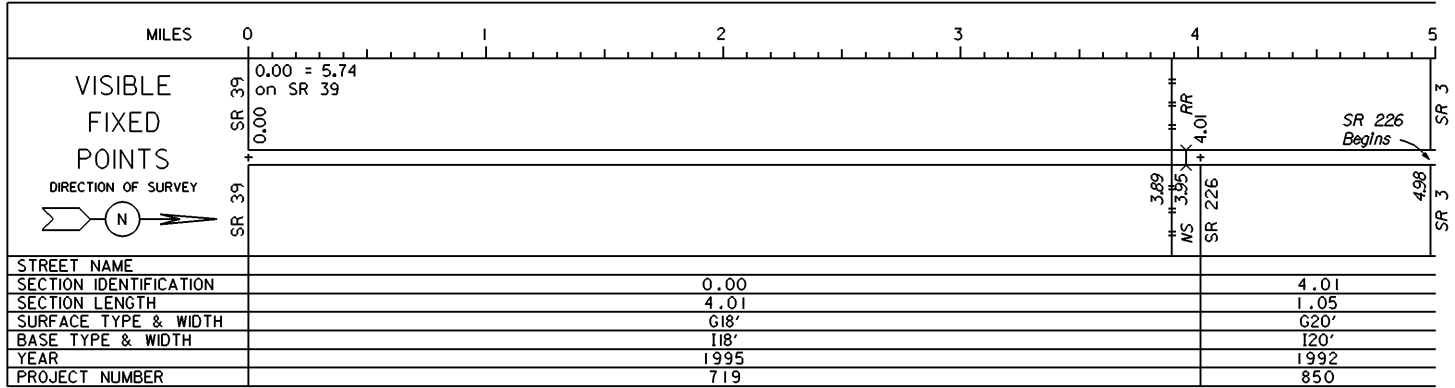
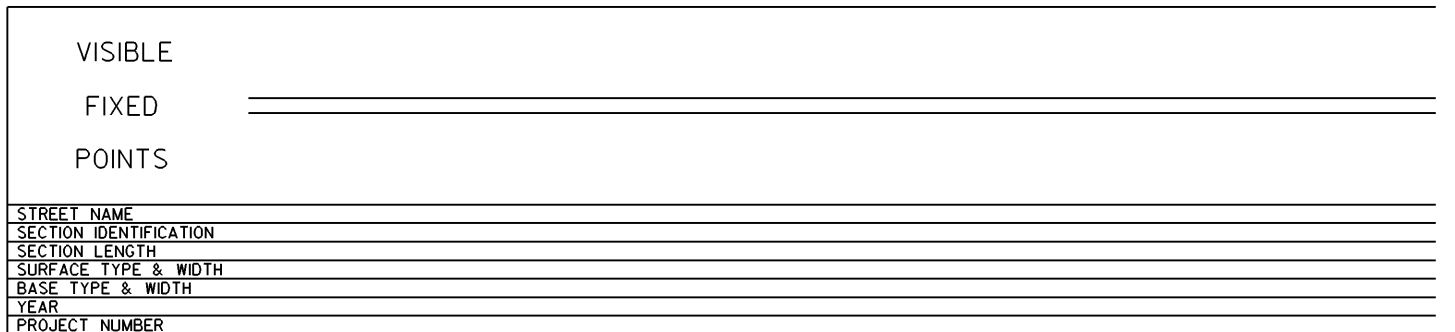
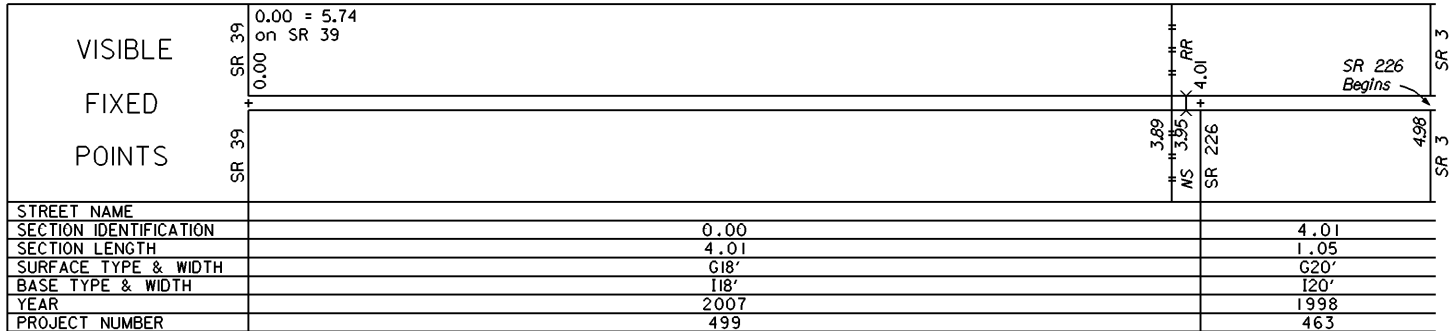


STATE OF OHIO - DEPARTMENT OF TRANSPORTATION
STATE ROUTE SECTIONS ON CONTINUOUS MILEAGE STATIONING

DISTRICT 11
COUNTY HOLMES
ROUTE SR 179



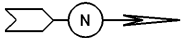
PERPETUATION



STATE OF OHIO - DEPARTMENT OF TRANSPORTATION

STATE ROUTE SECTIONS ON CONTINUOUS MILEAGE STATIONING

DISTRICT 11
 COUNTY HOLMES
 ROUTE SR 179

	MILES	5.00	5.20	5.40	5.60	5.80	6.00
VISIBLE FIXED POINTS DIRECTION OF SURVEY 	CO CO + 5.06 CO HOLMES COSOCTON						
STREET NAME							
SECTION IDENTIFICATION		4.01					
SECTION LENGTH		1.05					
SURFACE TYPE & WIDTH		G20'					
BASE TYPE & WIDTH		I20'					
YEAR		1992					
PROJECT NUMBER		850					

PERPETUATION

	MILES	5.00	5.20	5.40	5.60	5.80	6.00
VISIBLE FIXED POINTS	CO CO + 5.06 CO HOLMES COSOCTON						
STREET NAME							
SECTION IDENTIFICATION		4.01					
SECTION LENGTH		1.05					
SURFACE TYPE & WIDTH		G20'					
BASE TYPE & WIDTH		I20'					
YEAR		1998					
PROJECT NUMBER		463					

	MILES	5.00	5.20	5.40	5.60	5.80	6.00
VISIBLE FIXED POINTS	CO CO + 5.06 CO HOLMES COSOCTON						
STREET NAME							
SECTION IDENTIFICATION							
SECTION LENGTH							
SURFACE TYPE & WIDTH							
BASE TYPE & WIDTH							
YEAR							
PROJECT NUMBER							