



Disaster Risk Management Arrangement - Fiji



AIM

An overview of the Disaster Risk
Management Arrangement for Fiji



SCOPE

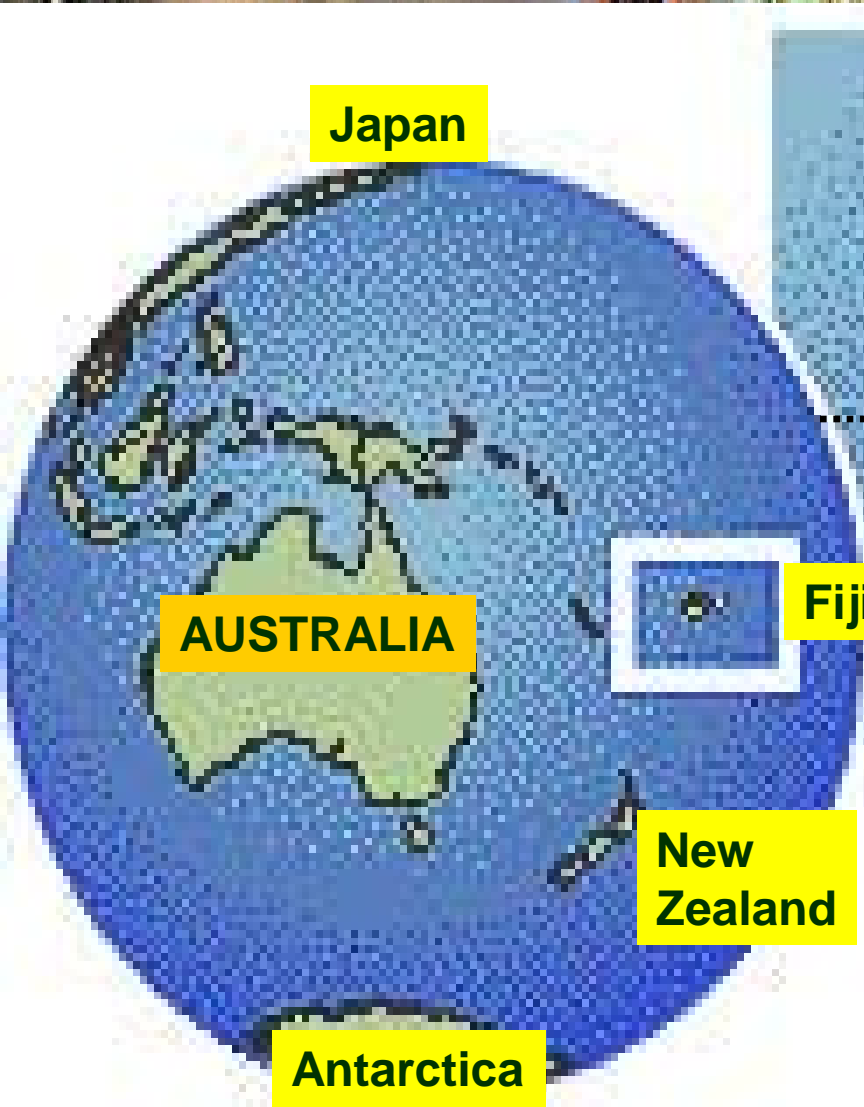
- Fiji's Geographical Location,
- Population Distribution and Weather Pattern
- DRM Machinery
 - Global and Regional DRM Instruments
 - National Disaster Management Plan and Act
 - National Disaster Management Structure
 - National Disaster Management Office
 - Disaster and Risk Management Programs
 - Conclusion



World, April 2005

Fiji's location in relation to the world



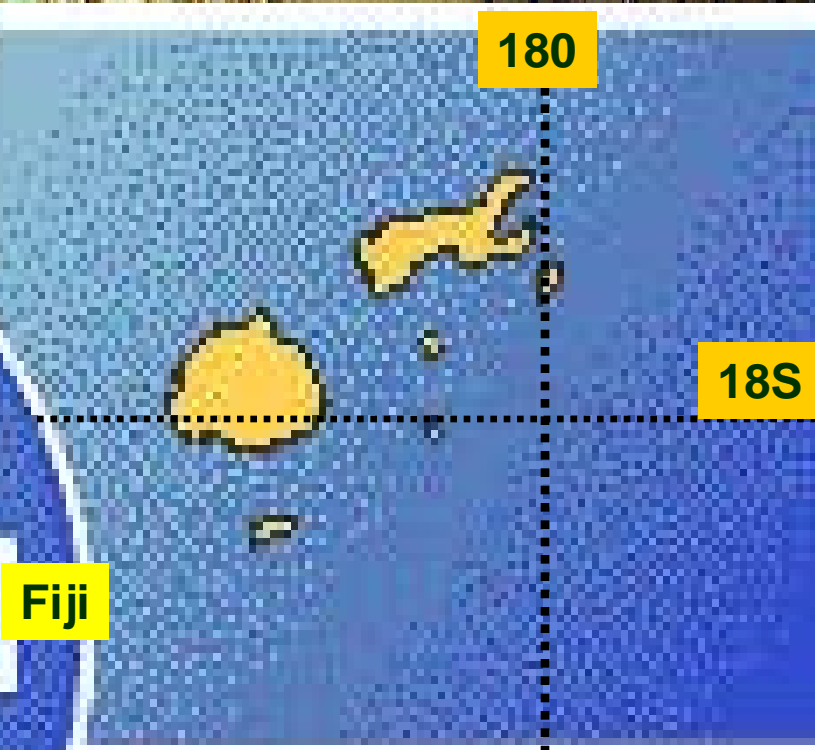


Japan

AUSTRALIA

New Zealand

Antarctica

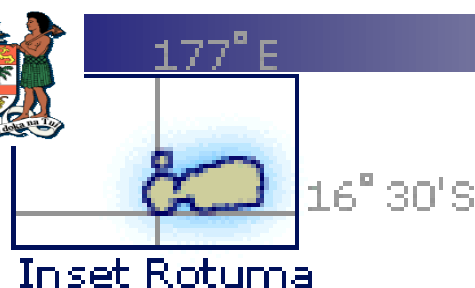


180

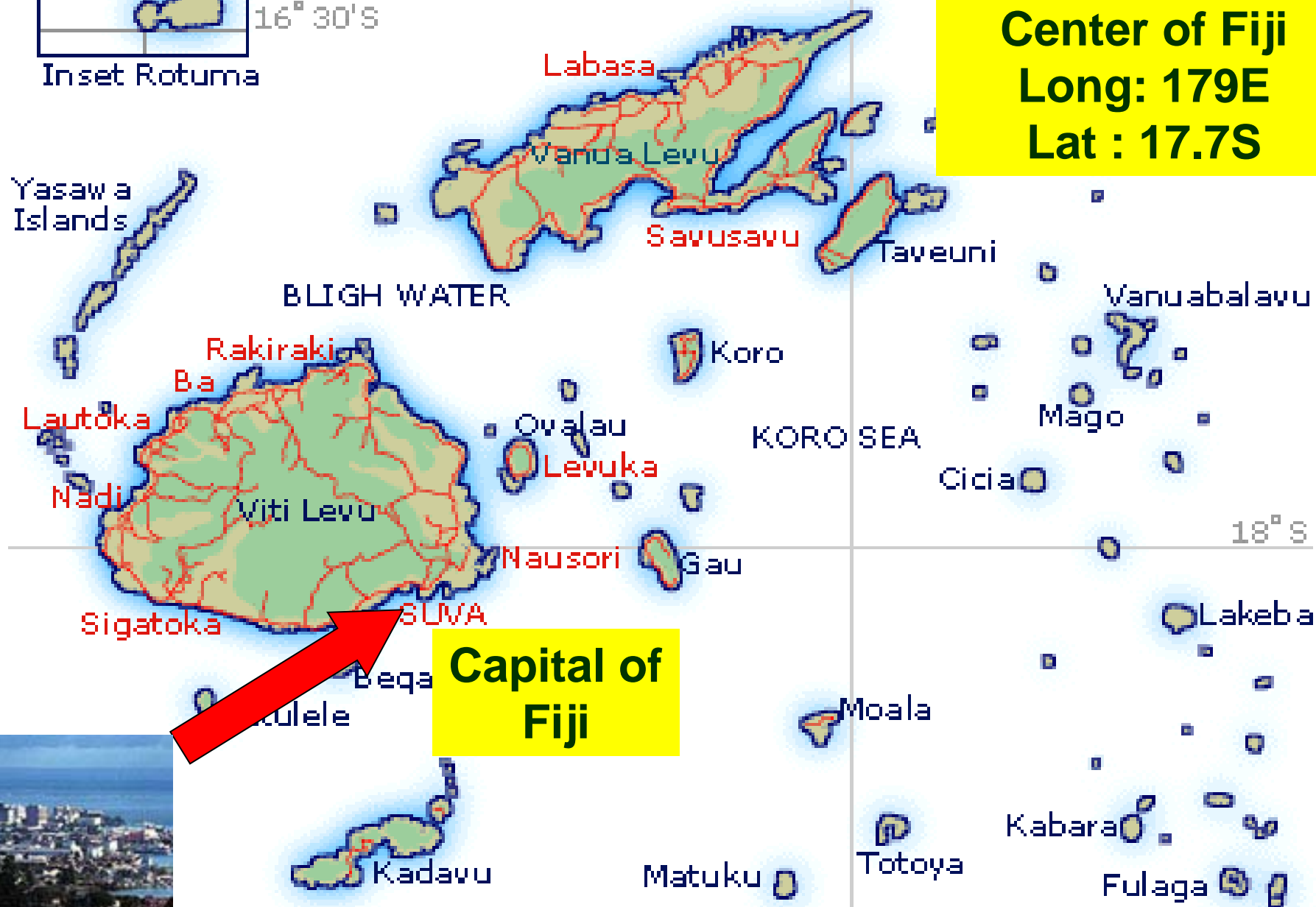
18S

Fiji

FIJI IN THE PACIFIC



Center of Fiji
Long: 179E
Lat : 17.7S





BASIC GEOGRAPHIC INFORMATION

■ Location:

Lies in the centre of PACIFIC OCEAN, mid way between the equator and the South Pole.

• Land Area:

- 330 islands , two major islands
- **Viti Levu** - 10,429 square Km
- **Vanua Levu** - 5,556 square Km

• Other main islands are :

- Taveuni (470sq km), Kadavu (411sq km), Gau (140 km) and Koro (400 sq km) ,
- Remaining 916 sq km - shared by 323 scattered small islands.

• Total land area: 18,330 sq km.



POPULATION - 2007 CENSUS

Fijians	Indians	Others	Total Population
473,983	311,591	42,326	827,900



WHY DRM FOR FIJI

■ Our location –

- Fiji is in the hub of the South West Pacific –
 - transit point to regional countries, air and sea routes between mainland America to Australia and New Zealand
- Cyclone belt region of SW Pacific
- “Pacific Ring of Fire”



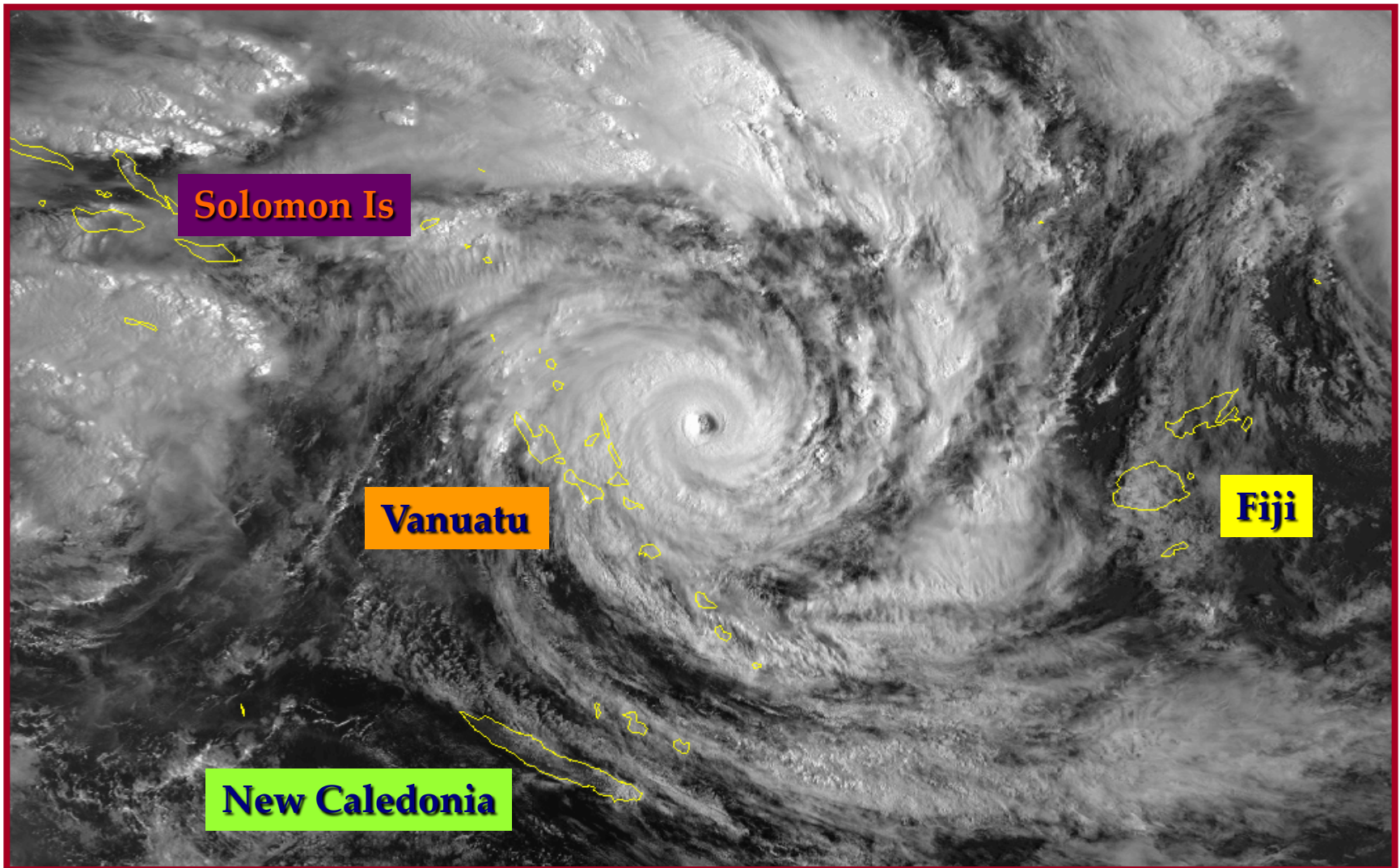
World, April 2005

Fiji's location in relation to the world





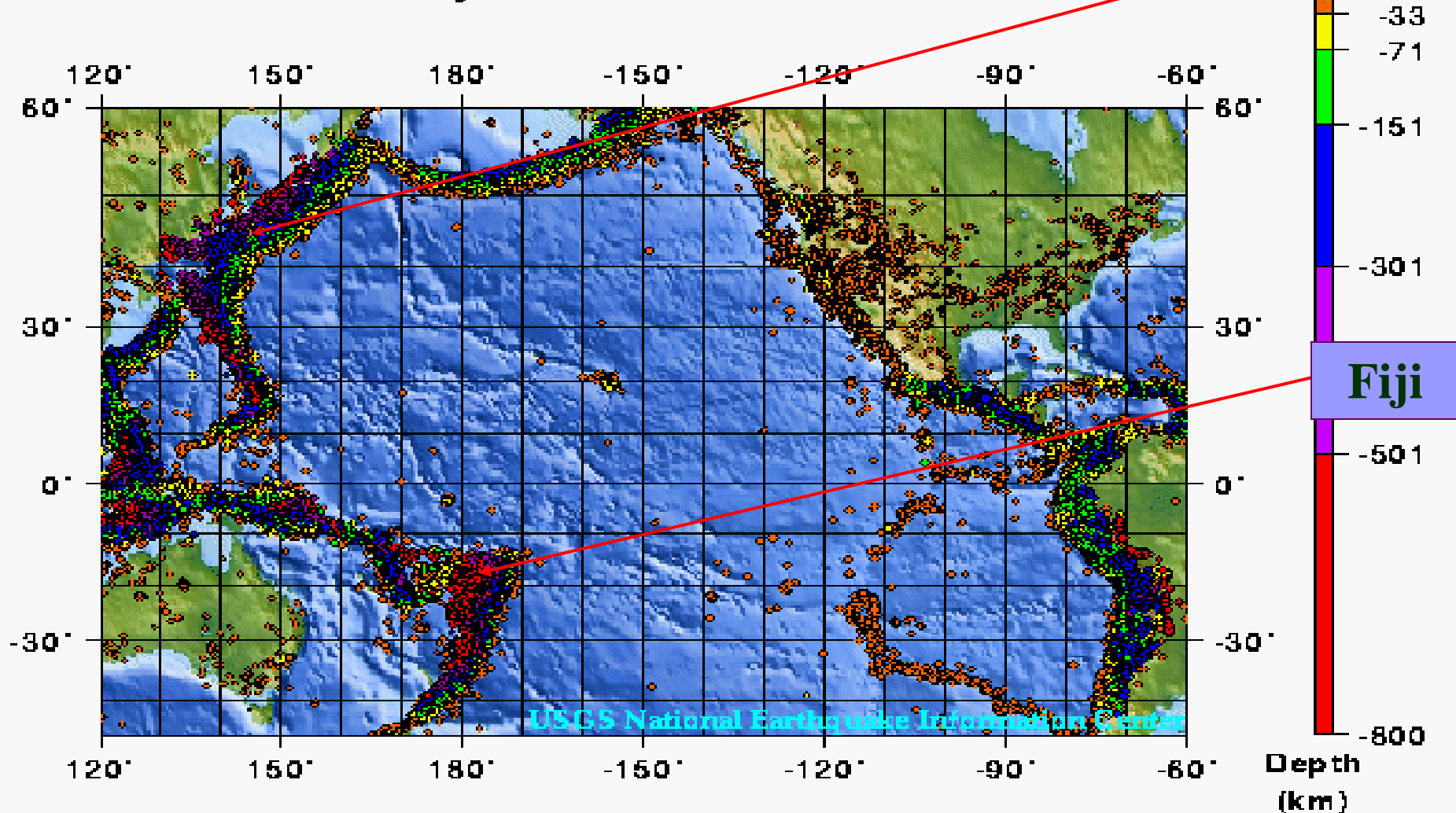
In the Cyclone Belt





Fiji – Located in the “Pacific Ring of Fire”

Seismicity of the Pacific Ring 1975 - 1995





COMMON HAZARD PICTURES



Flood



Flood



Flood



Drought



Tsunami



Cyclone/Landslide



DISASTER DAMAGE COSTS 1985-2004

DISASTER NAME	YEAR	ESTIMATED DAMAGE COSTS US \$
TC ERIC & NIGEL	1985	39,712,636.00
TC RAJ	1986	14,000,000.00
TC RAE & TC SINA	1990	36,300,000.00
TC JONI	1992	1,600,000.00
TC KINA	1993	100,000,000.00
TC GAVIN	1995	18,300,000.00
TC JUNE	1997	60,000,000.00
TC DANI	1999	2,000,000.00
TC PAULA	2001	800,000.00
TC AMI	2003	22,089,200.00
FLASH FLOOD	2004	11,585,392.00
TOTAL DAMAGE COSTS		US \$306,387,228.00

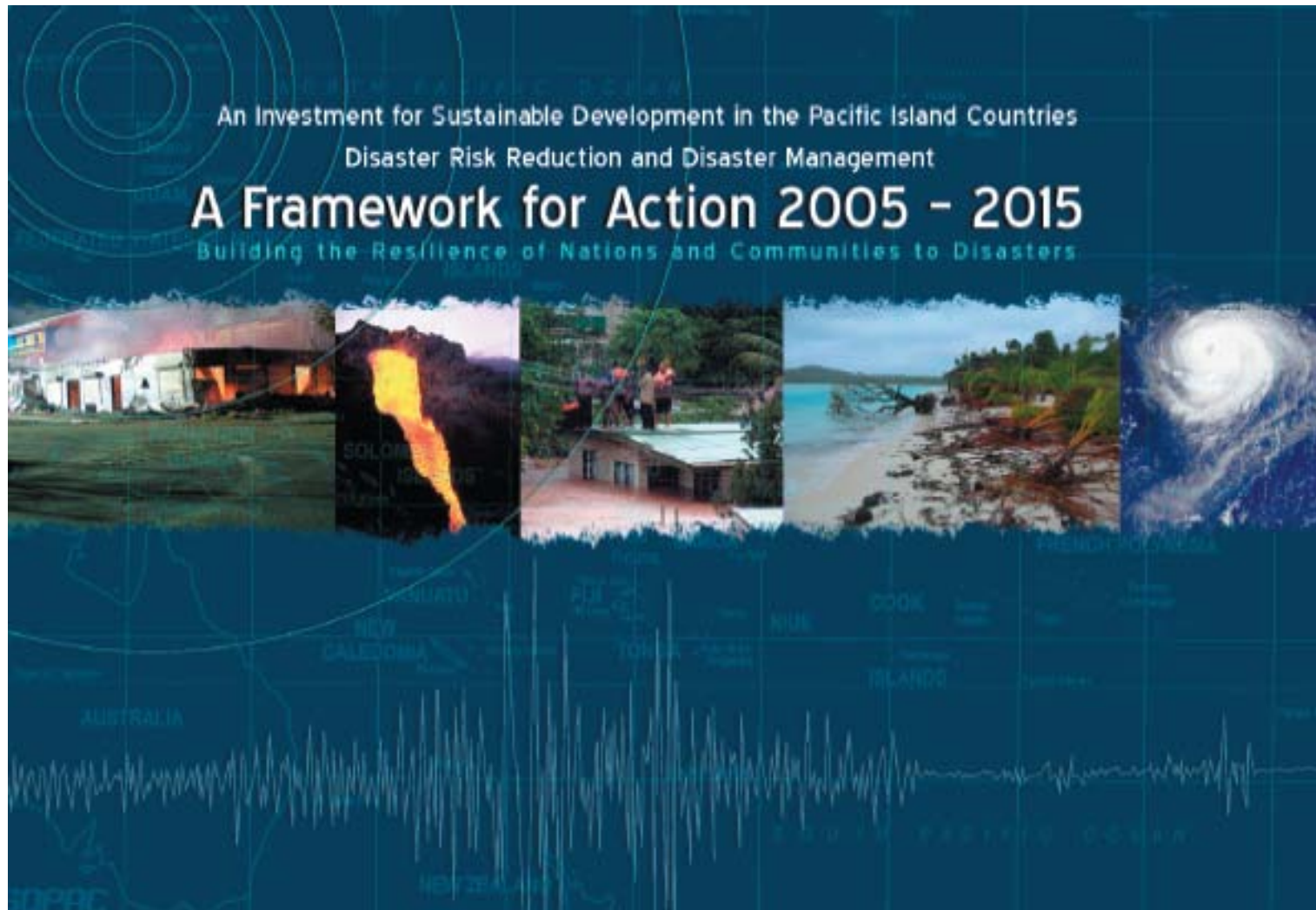


DISASTER DAMAGE COSTS 2005-2007

YEAR	DISASTER	COST IN FJD \$
2005	Flash Flood Western Central Division	113,066,08
2007	February Flood Northern Division (Vaturova Tikina and Labasa District)	15,145,378.73
	TC Cliff and Flood February, March and April- Northern Easter and Western Division	4,308,991.00



REGIONAL FRAMEWORK FOR ACTION





PACIFIC DRM PARTNERSHIP NETWORK

- Formed in February 2006 to assist Pacific countries in developing and implementing disaster risk reduction and disaster management strategies to help ensure sustainable development.
- Open ended partnership (currently 32 members)

Main Priorities

- Establishment of a **regional information database** to provide Pacific countries with an overview of existing Pacific Island Country DRR and DM capacities, needs, information sources, resources, policies, plans and regulations.
 - **Pacific Disaster Net:** www.pacificdisaster.net
- Development and implementation of **National Action Plans** for Pacific countries in line with the Regional Framework for Action.

Pacific Islands Applied Geoscience Commission (SOPAC) **Pacific Islands Forum Secretariat (PIFS)** Secretariat for the Pacific Regional Environment (SPREP), **Secretariat of the Pacific Community (SPC)** International Federation of the Red Cross and Red Crescent (IFRC) **United Nations Development Programme (UNDP)** United Nations Office of the Coordination for the Humanitarian Affairs (UNOCHA) **International Strategy for Disaster Reduction (UNISDR)** United Nations Children's Fund (UNICEF) **Asian Development Bank (ADB)** The Asia Foundation (TAF) / Office of United States Foreign Disaster Assistance (OFDA) **United Nations Economic and Social Commission for Asia and the Pacific / Pacific Operations Centre (UNEPOC)** Pacific Disaster Center (PDC) **South Pacific Tourism Organisation (SPTO)** University of the South Pacific (USP) **Fiji School of Medicine (FSM)** Regional Specialised Meteorological Centre-Fiji **World Meteorological Organization (WMO)** Australasian Fire Authorities Council (AFAC) **Emergency Management Australia (EMA)** New Zealand Ministry of Civil Defence and Emergency Management (NZMCDEM) **Ministry of Foreign Affairs-France** World Bank (WB) **European Union Commission for the Pacific (EU)** Australian Agency for International Development (AusAID) **New Zealand's International Aid & Development Agency (NZAID)**, The Foundation of the Peoples of the South Pacific International (FSPI) **National Institute of Water and Atmospheric Research (NIWA)** Japan International Cooperation Agency (JICA) **Maddocks** Pacific Islands Telecommunications Association (PITA), Sentinel Asia.



NDM PLAN 1995

- Accordingly in 1990, the Government (SVT) decided to upgrade the operation of EMSEC and change its name to National Disaster Management Office (NDMO)
- Not only this, the whole Unit was moved to the Ministry of Provincial Development as Cabinet sees the portfolio would best fit the Disaster Management Framework for Fiji – National, Division, District and Community levels



AIM OF THE NDM PLAN

- The major aim of the Plan is to clearly outline the arrangements for control and coordination of all disaster related activities in Fiji . This will serve to :
 - Reduce the potential losses and other adverse effects of known natural hazards
 - Assure prompt and appropriate disaster assistance to disaster survivors when necessary (Relief)
 - Achieve rapid and durable recovery following any devastation event

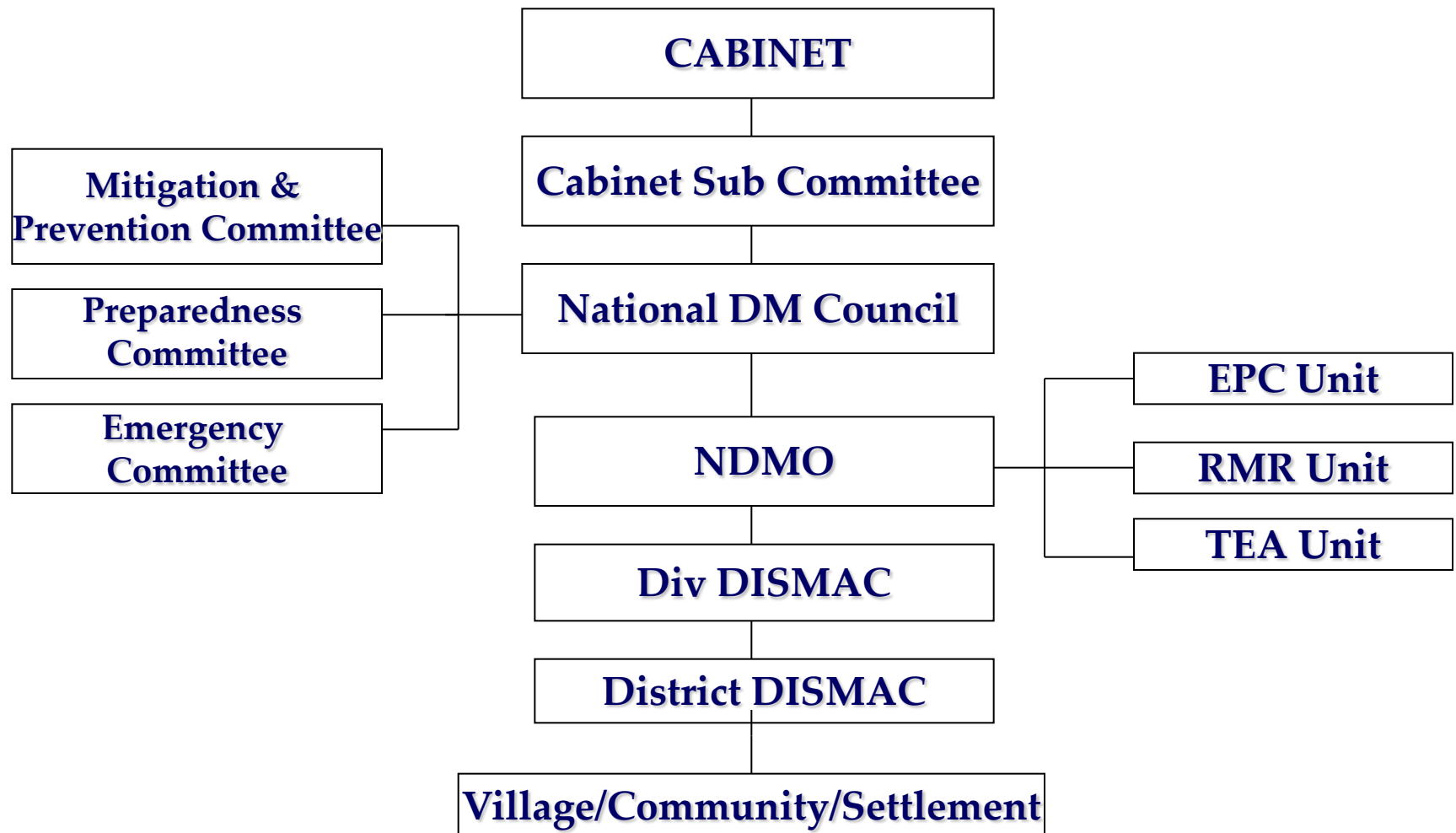


NDMO ACT 1998

- This NDM Act 1998 was formulated from the NDM Plan 1995 (after 3 years)
- The NDM Act 1998 is currently in use



NATIONAL DISASTER MANAGEMENT STRUCTURE (Decision Making)





NDRM OPERATIONAL ARRANGEMENT

**National Disaster Management
Council**

**National Disaster Management
Office**

**Commissioner
Western Division**

**Commissioner
Central Division**

**Commissioner
Northern Division**

**Commissioner
Eastern Division**

8 District Officers

7 District Officers

8 District Officers

4 District Officers

Village/Community/Settlements Based Disaster Management Committee



NATIONAL DRM ARRANGEMENT

- National
- 4 Divisions
- 27 Districts
- 189 Tikina
- 1171 Villages
- 13 Municipalities
- Settlements



NDMO VISION

Disaster Resilient Fiji



NDMO MISSION

**Building the National Resilience to
Disasters**



PRINCIPLES – NDMO MANDATE

❑ NDMO is guided by the following SIX Principles:

- ❑ Governance – Organisational, Institutional, Policy and Decision-making Framework
- ❑ Knowledge, Information, Public Awareness and Education
- ❑ Analysis & Evaluation of Hazards, Vulnerabilities and Elements at Risk
- ❑ Planning for effective Preparedness, Response and Recovery
- ❑ Effective, Integrated and People-Focused Early Warning Systems
- ❑ Reduction of Underlying Risk Factors



NDMO DRM PROGRAMS

- Ongoing training and awareness programs at all level
- Annual National Disaster Awareness Week Program
- Installation of Flood Early Warning System for major rivers e.g. Navua, Rewa, Sigatoka, Nadi and Ba
- Installation of Tsunami Early Warning System
- Strengthening of information database and information network



NDMO DRM PROGRAMS

- UNCRD School Retrofit Project
- IT Development Program
- CHARM Development & Implementation
- Extension of DRM Structures to villages and settlement level (community)
- Development of Disaster Plans at all levels
- EOC Upgrading Project at all levels



WINDS PROGRAM

- Survey for installation site completed
- ITC to host the installations
- MOA hopefully to be signed in August 2010



NDMO CONTACT

- Telephone: 679 3313400, 679 3319255
- Fax: 679 3319315
- Postal:
PO Box 2219,
Government Buildings,
Suva