

Figure 1. Overview map of the Ash River Watershed showing access roads and Hydropower facilities at Elsie Lake.

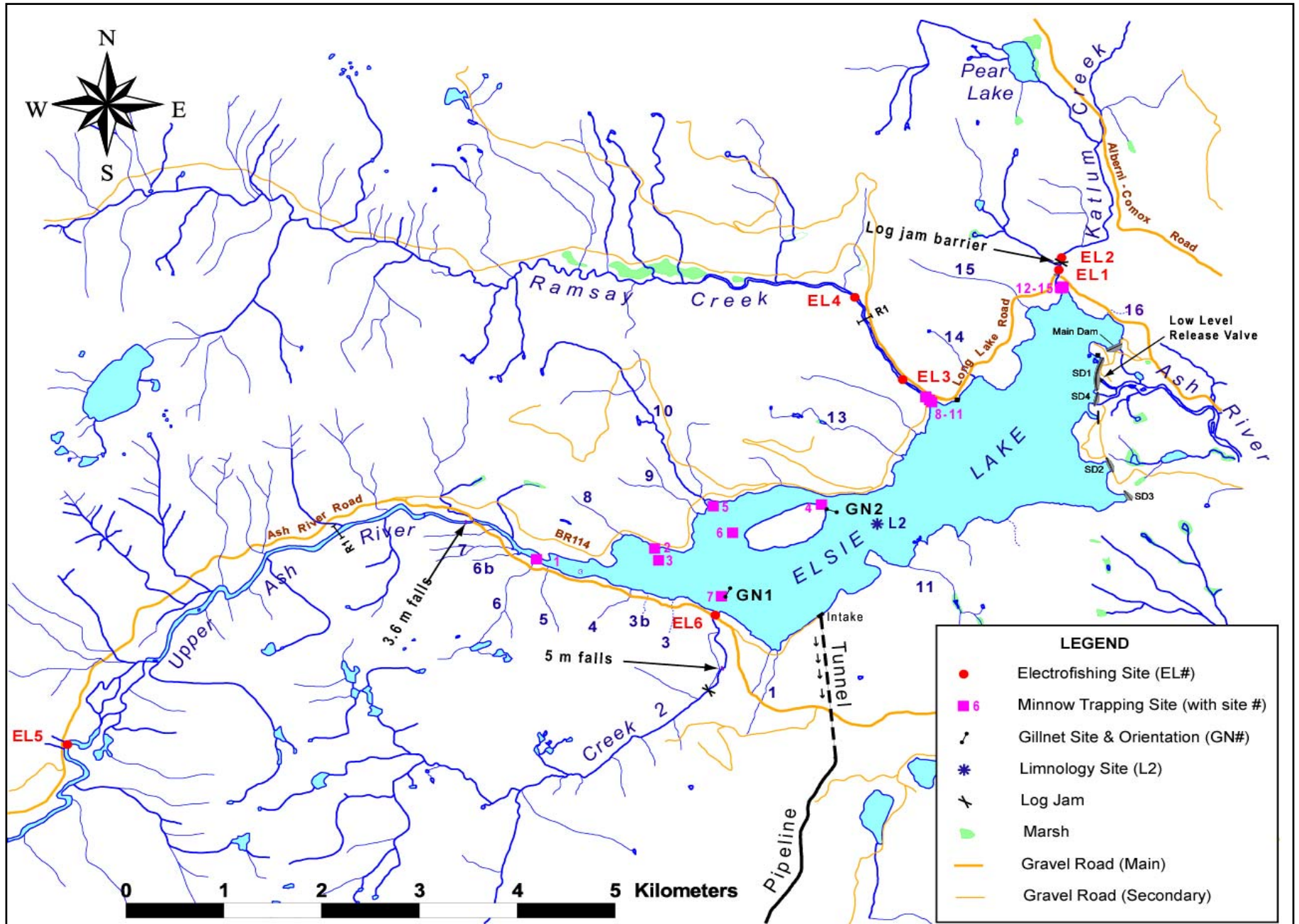


Figure 2. Map of the Elsie Lake basin showing named and unnamed survey streams (unnamed streams are numbered), as well as electrofishing, minnow trapping, gillnet, and limnology site(s).

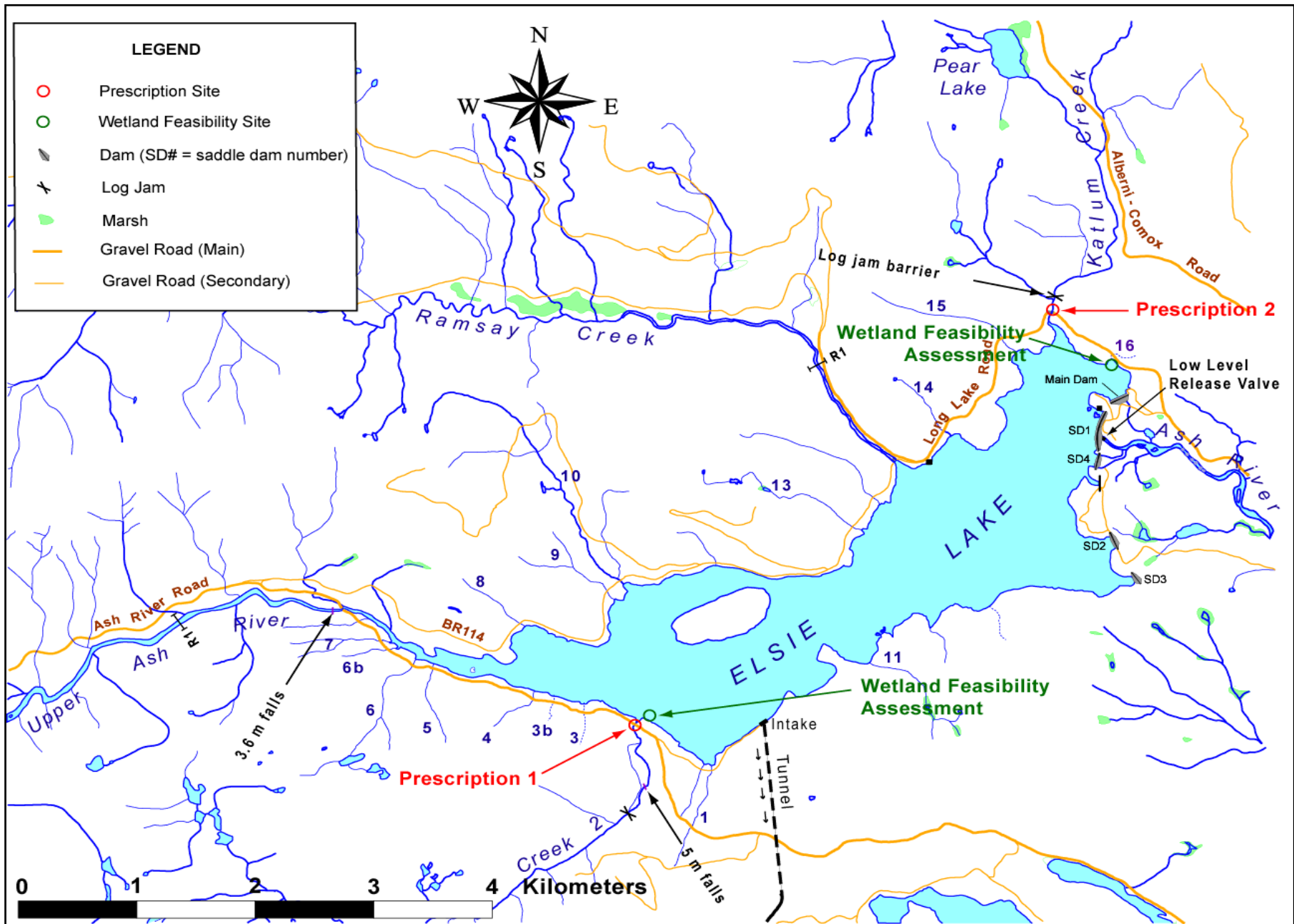


Figure 3. Map of the Elsie Lake area showing proposed prescription sites (red) and sites recommended for wetland feasibility assessment (green).

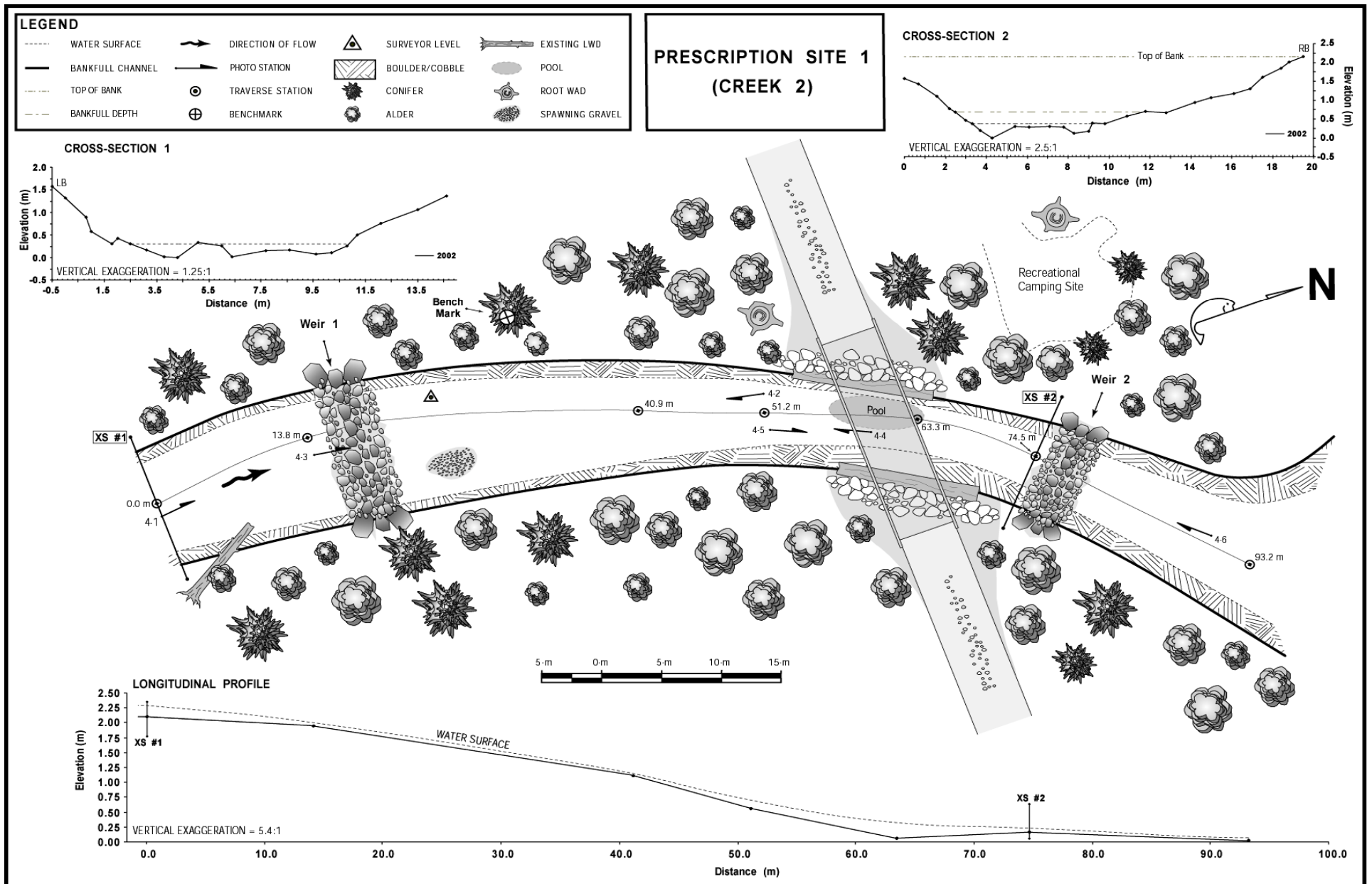


Figure 4. Prescription Site 1 (Creek 2) showing plan view, cross-sections, and longitudinal profile. The prescription involves the installation of 2 spawning gravel platforms held in place by low rock weirs (Weir 1 and Weir 2 in the plan view).

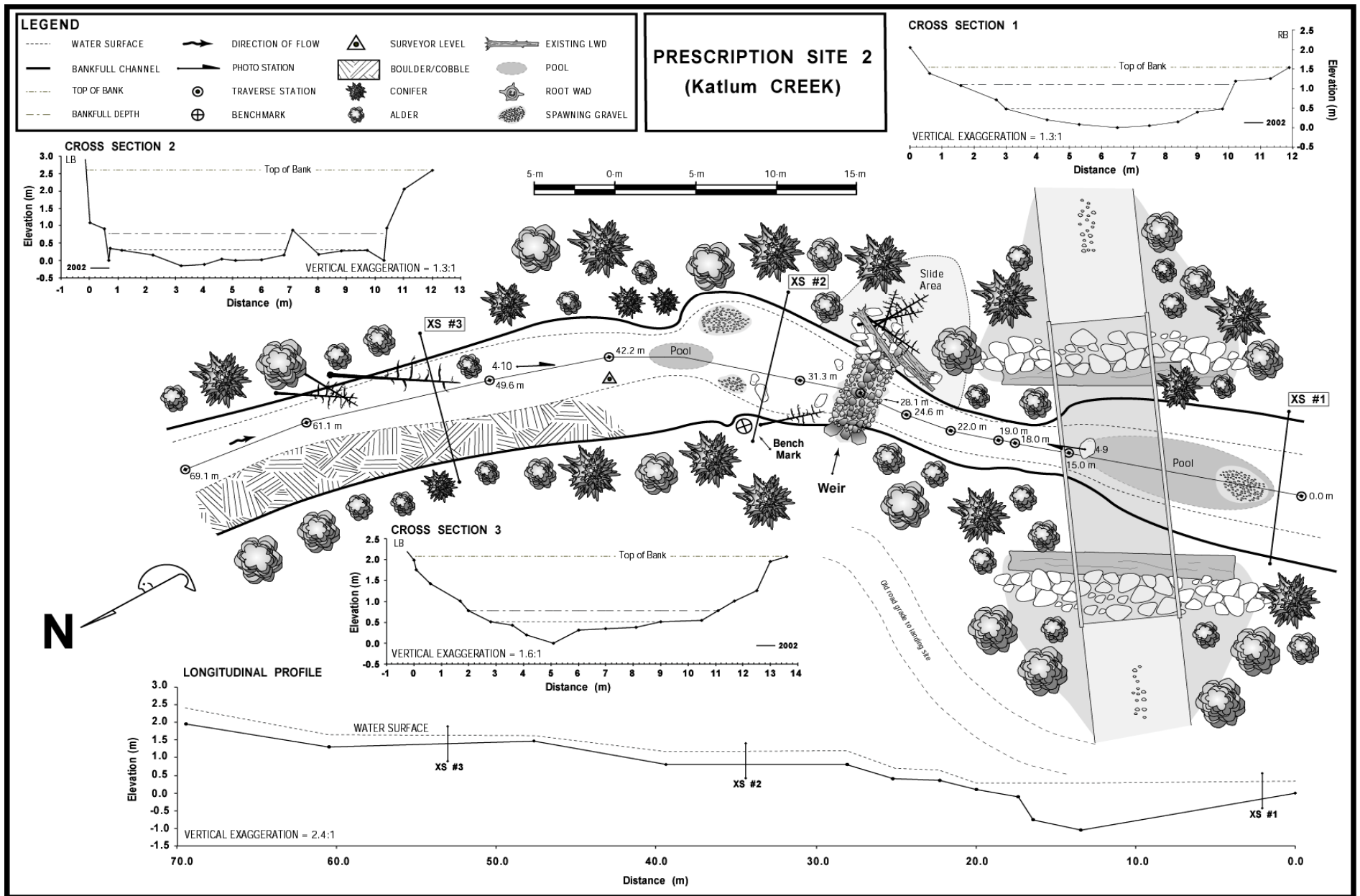


Figure 5. Prescription Site 2 (Katlum Creek) showing plan view, cross-sections, and longitudinal profile. The prescription involves the installation of 1 spawning gravel platform held in place by low rock weirs.

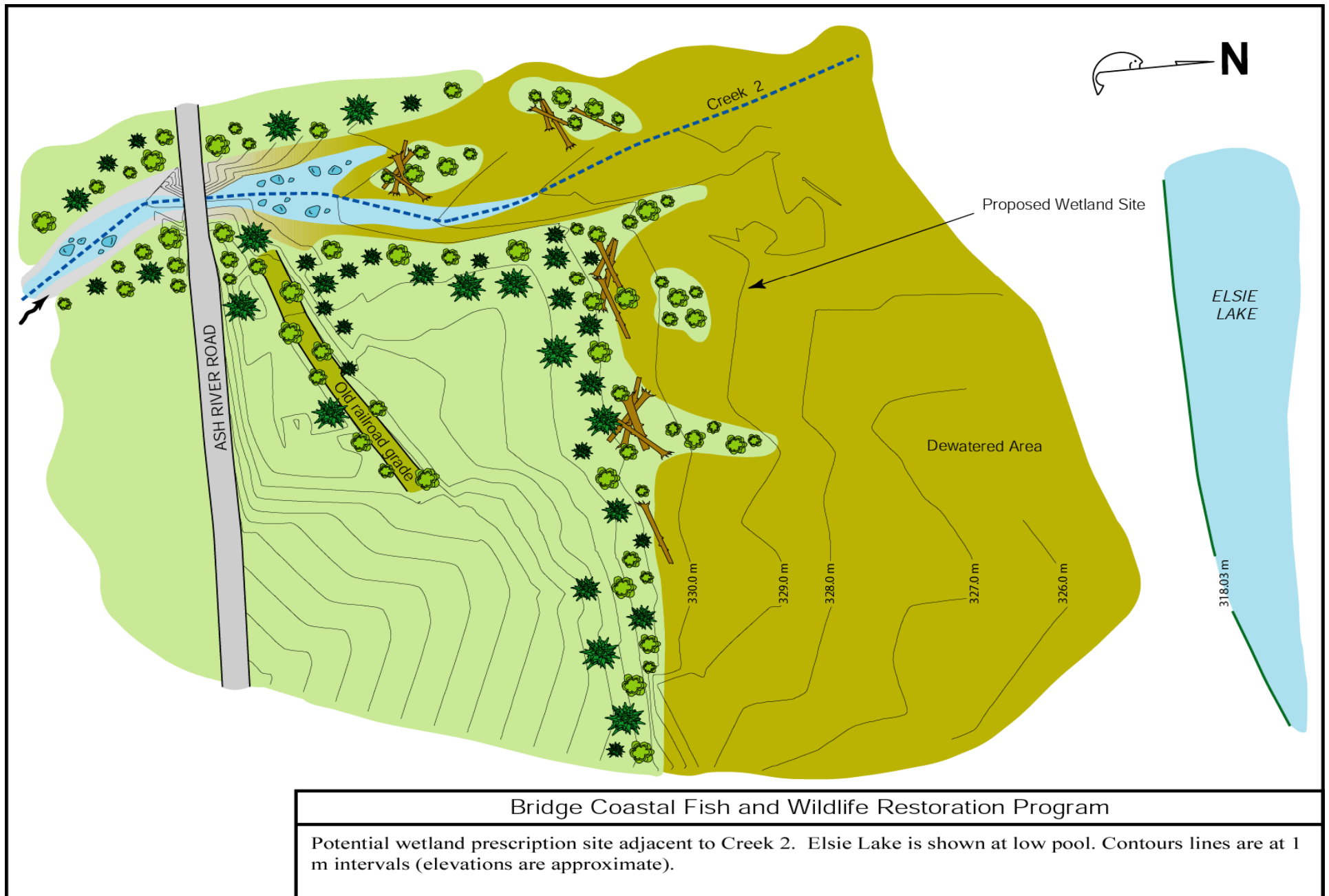
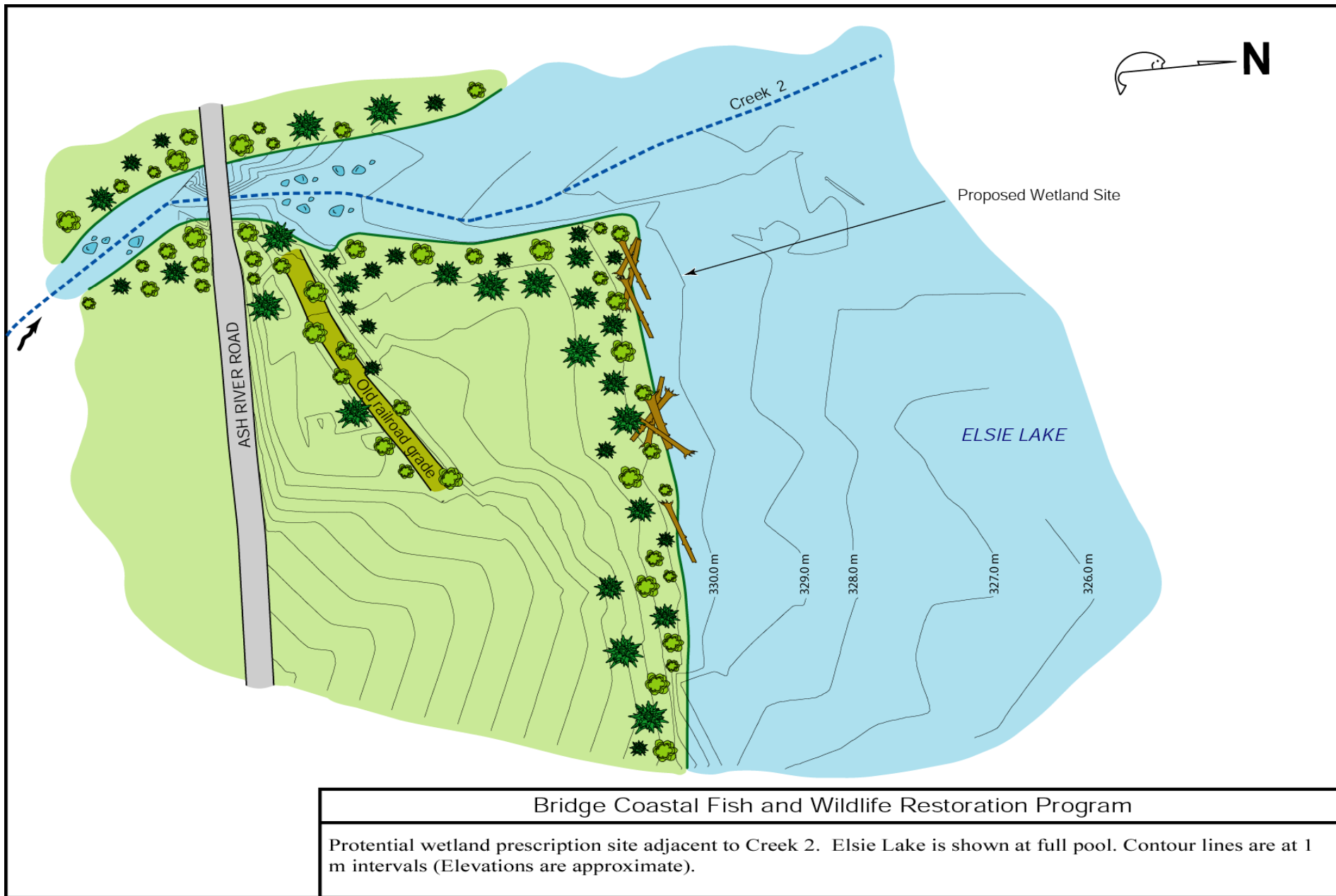


Figure 6. Drawing of the potential wetland prescription area adjacent to the mouth of Creek 2 (Elsie Lake at low pool).

Figure 7. Drawing of the potential wetland prescription area adjacent to the mouth of Creek 2 (Elsie Lake at full pool).



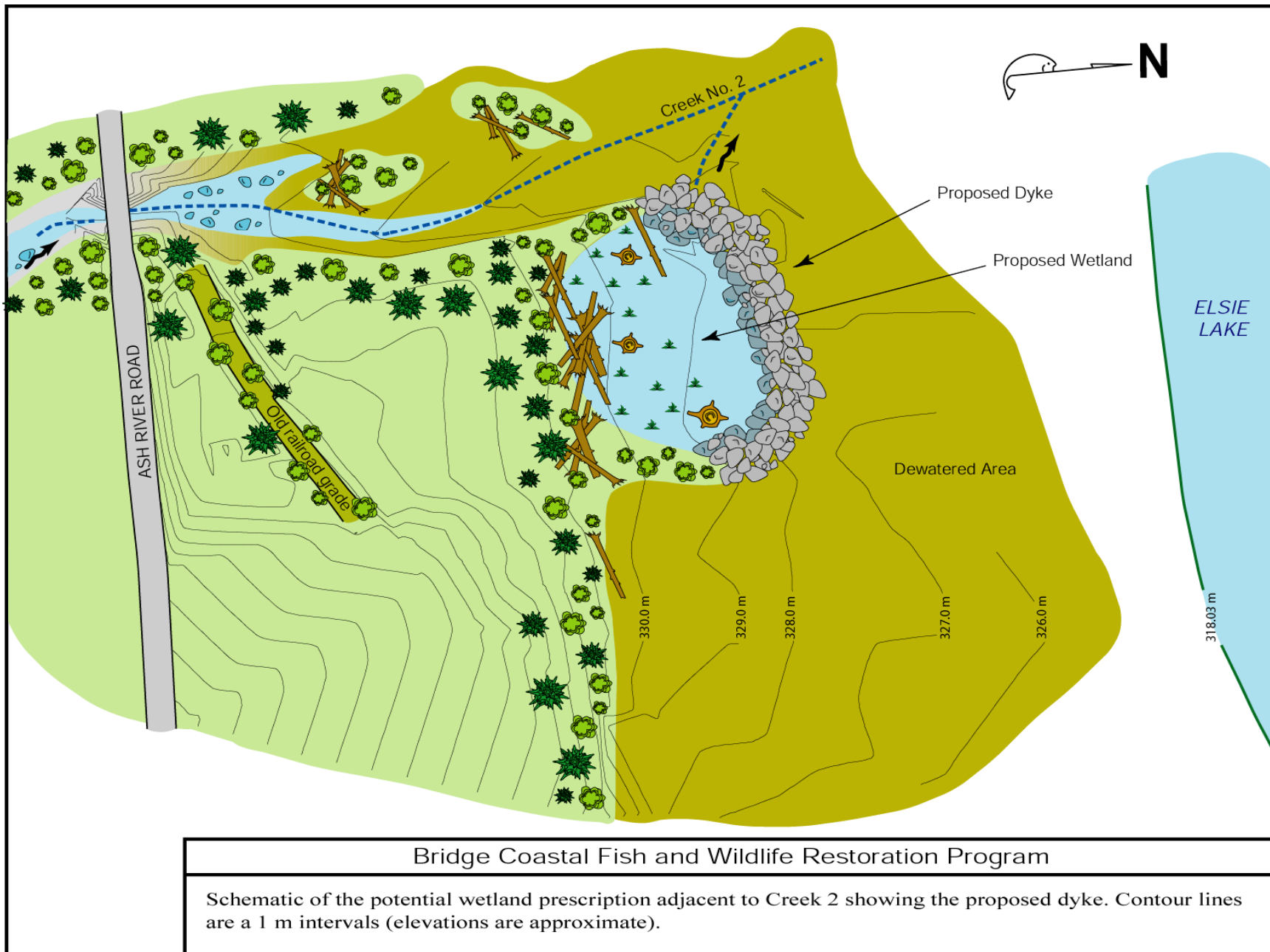


Figure 8. Schematic of the potential wetland prescription for the area adjacent to the mouth of Creek 2.

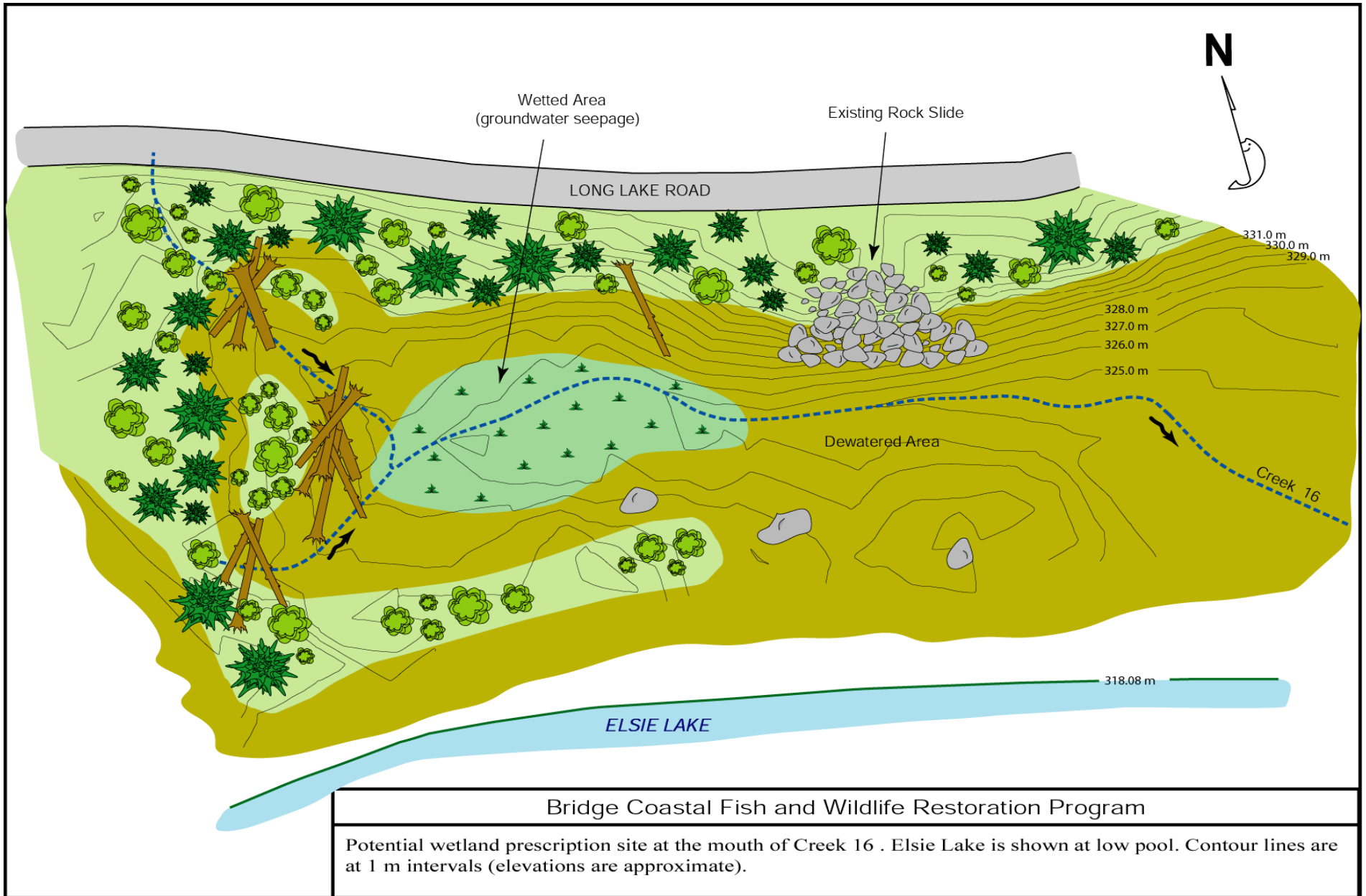


Figure 9. Drawing of the potential wetland prescription area at the mouth of Creek 16 (Elsie Lake at low pool).

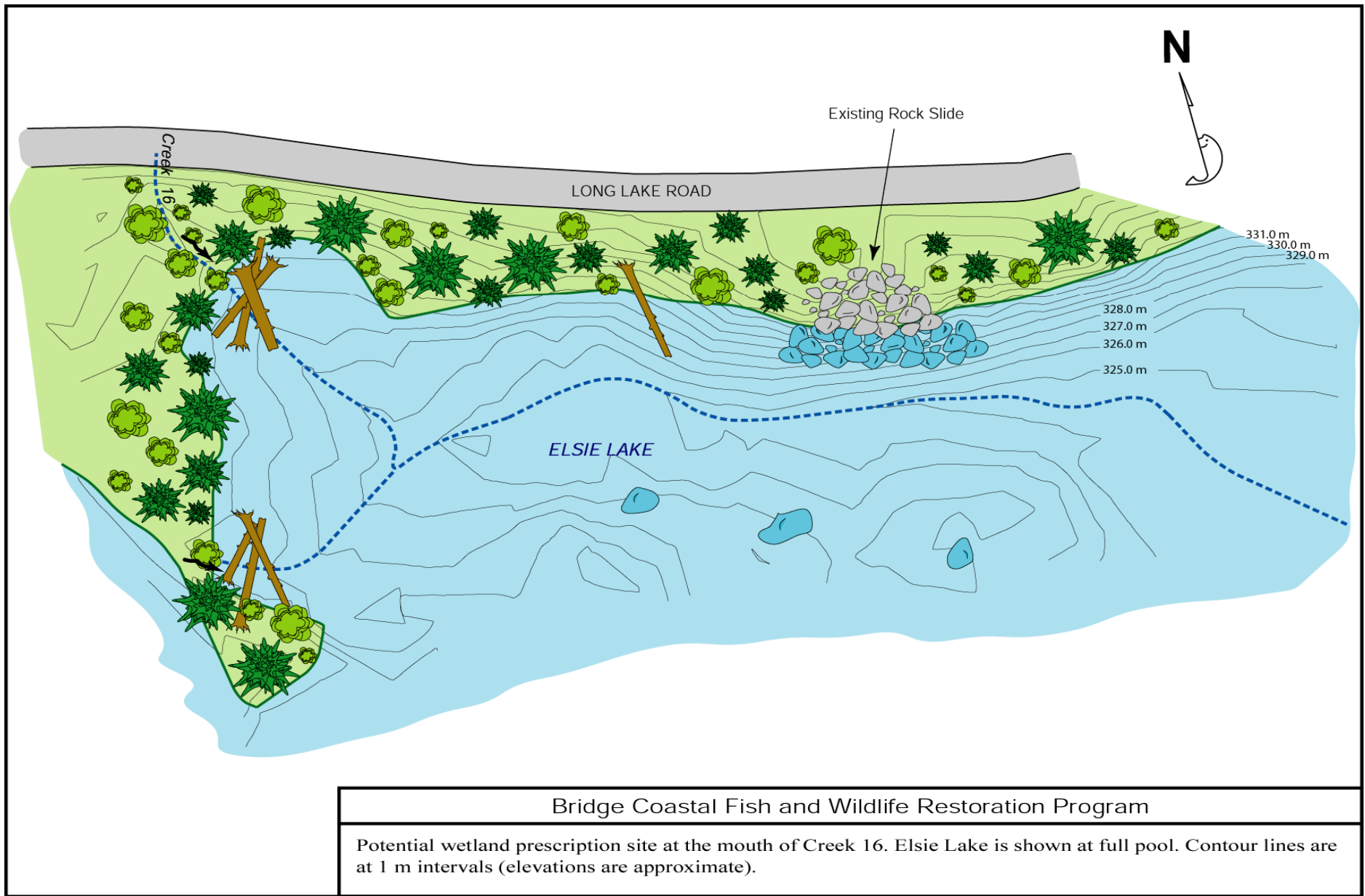


Figure 10. Drawing of the Potential wetland prescription area at the mouth of Creek 16 (Elsie Lake at full pool).

Figure 11. Schematic of the potential wetland prescription for the area off the mouth of Creek 16.

