

For further information,
visit our website at www.uclan.ac.uk

For all course enquiries,
telephone 01772 892400
email cenquiries@uclan.ac.uk

To become a member of the
Alumni Association,
telephone 01772 892344
email aassociation@uclan.ac.uk


uclan
MAKES YOU THINK.

UNDERGRADUATE COURSES

The University offers nearly **600 courses, including:**

Alternative Entry Routes – preparatory courses leading to degree level study

Foundation Degrees

BA/BSc(Hons) Degrees

More than 3,000 possible combinations of subjects through the flexible Combined Honours programme

Many courses available by part-time study

www.uclan.ac.uk/courses



POSTGRADUATE COURSES & RESEARCH

We offer over 180 taught postgraduate programmes. Graduates of this university are entitled to a 20% discount on all postgraduate courses. UCLan has a research reputation in a range of fields and we offer higher degrees up to MPhil and PhD level. Full time bursaries, research assistantships and fellowships are available.

For further information contact Enquiry Management on 01772 892400, email cenquiries@uclan.ac.uk or Research Support on 01772 894287, email researchdegrees@uclan.ac.uk



INTERNATIONAL

UCLan has a truly international focus and there is a thriving international population of approximately 1500 students, representing over 40 countries. We have formal links with over 120 institutions worldwide and there are opportunities for students to study abroad as part of their degree.

www.uclaninternational.org



ALUMNI

We are proud of our graduates and are constantly building up our Alumni Association. Membership is available to all former students of the University. Benefits include: free attendance at public lectures, reunions, help with locating lost friends, special alumni events, open days, careers advice, use of sports centres, library, computing services, on-line message board and 20% discount on postgraduate course fees. Merchandise and memorabilia are also available to buy.

www.uclan.ac.uk/home/alumni

INVESTMENT

During the last 10 years, UCLan has invested over £50 million in new buildings and facilities to provide a modern working and learning environment.

New buildings include:

Computing and Technology – Sept 2005

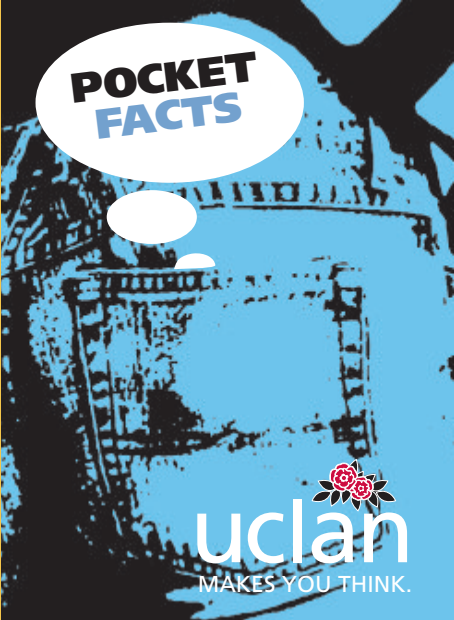
Students' Union – Apr 2005

Faculty of Science, Darwin Building – Aug 2005

Faculty of Health and Lancashire Business School, Brook Building – Aug 2005

Art House Cinema – March 2006

Performing Arts Building – new £15.3 million project due for completion Sept 2007



POCKET
FACTS


uclan
MAKES YOU THINK.

HISTORY

- 1828** Institution for the Diffusion of Knowledge
- 1882** Harris Institute
- 1956** Harris College
- 1973** Preston Polytechnic
- 1984** Lancashire Polytechnic
- 1992** University of Central Lancashire
- 1992** Integration of Lancs College of Midwifery
- 1996** Integration of Lancs College of Nursing
- 1998** Integration of Newton Rigg College (UCLan Penrith)
- 2004** Integration of Carlisle Business School (UCLan Carlisle)
- 2005** Integration of West Lakes Research Institute

PARTNER COLLEGES

We have a wide network of Partner Colleges delivering our courses throughout the North West. *Our Partner Colleges are:*

- | | |
|---------------------------------|----------------------------------|
| Burnley College | Lakes College |
| Blackburn College | West Cumbria |
| Blackpool and the Fylde College | Lancaster & Morecambe College |
| Carlisle College | Lancashire Fire & Rescue College |
| Cumbria Institute of the Arts | Myerscough College |
| Eastleigh College | Oldham College |
| Fire Service College of Nursing | Preston College |
| Furness College | Runshaw College |
| Greater Manchester Fire Service | Skelmersdale & Ormskirk Colleges |
| Hugh Baird College | Southport College |
| Isle of Man College | St Helens College |
| Kendal College | Stockport College |
| | Wigan & Leigh College |

LOCATION, LOCATION, LOCATION

UCLan has campuses in Preston, Penrith and Carlisle.

UCLan Preston is right in the heart of the city, which in recent years has undergone a multi-million pound regeneration, involving major retail, leisure and cultural facilities. The campus has a compact, friendly feel with most buildings within 10 minutes' walk of each other.

UCLan Penrith is 70 miles north of Preston, on the edge of the beautiful Lake District, providing a unique environment to live and study.

UCLan Carlisle is located in the heart of Cumbria's regional capital, close to the Scottish borders and the Lake District, combining city living with the great outdoors.

SCHOLARSHIPS

A range of scholarships is available from September 2006. Visit www.uclan.ac.uk/fees or www.dfes.gov.uk/studentsupport for further information.



STUDENTS' UNION

It's an exciting time for the Students' Union with a new £6.5 million building and award winning night club venue, 53°, providing UCLan students with one of the largest and most impressive student facilities in the country.

www.yourunion.co.uk



OPEN DAYS

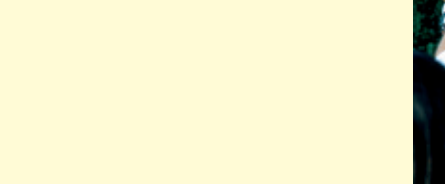
UCLan Preston

- | | |
|------------------------|-------------------|
| Saturday | 7 October 2006 |
| Saturday | 24 March 2007 |
| Saturday | 16 June 2007 |
| Saturday/Sunday | 18/19 August 2007 |

UCLan Penrith and UCLan Carlisle

- | | |
|------------------------|-------------------|
| Saturday | 30 September 2006 |
| Saturday | 17 March 2007 |
| Saturday | 9 June 2007 |
| Saturday/Sunday | 18/19 August 2007 |

www.uclan.ac.uk/opendays



FACTS & FIGURES

- No. of full time undergraduate students: 15,070
- No. of postgraduate students: 2,810
- No. of part-time undergraduate students: 9,310
- No. of FE students: 5,425
- No. of university staff: 2,611



uclanSPORT

There are excellent facilities here at UCLan and we've created *uclansport* to bring together all aspects of sport at the University including academic work, competitive sport and recreation. With a newly refurbished indoor Foster Sports Centre, our £12m Preston Sports Arena and our climbing wall at Penrith, *uclansport* has something for everyone.

www.uclan.ac.uk/sport

