



United Nations Population Fund

## Population Counts (Provisional)

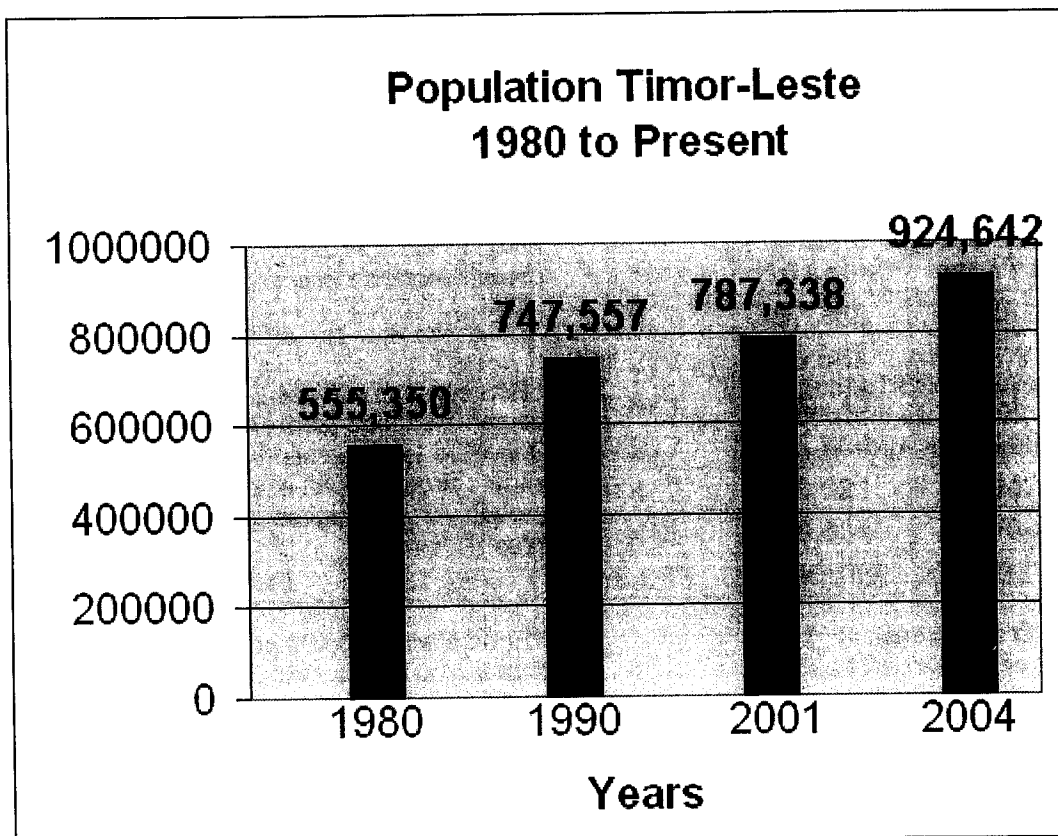
## Census Timor-Leste 2004

*The information in this bulletin is based on the census usually resident population count on census day and also includes visitors.*

### Introduction

On July 11th, 2004, the first census of Timor-Leste as a new nation was taken. This bulletin contains a summary of key information available from the provisional counts and makes comparisons with counts from the 2001 Suco Survey totals as appropriate.

The chart below compares the 2004 population count with population estimates from the 2001 Suco Survey together with official population figures from the 1990 and 1980 censuses of Timor Timur taken under Indonesian administration.





## Population Counts

### Population Counts by District

District	Number of Households	Population		Totals 2004 Census	2001 Suco Survey	Percent Difference +/-
		Male	Female			
Aileu	8,177	19,049	17,840	36,889	31,826	15.9
Ainaro	12,128	26,964	26,665	53,629	45,092	18.9
Baucau	23,815	52,483	52,088	104,571	101,517	3.0
Bobonaro	18,575	40,955	41,430	82,385	69,932	17.8
Covalima	10,546	28,018	27,923	55,941	49,234	13.6
Dili	30,400	88,373	79,404	167,777	120,474	39.3
Ermera	21,028	51,960	51,209	103,169	88,415	16.7
Lautem	13,382	28,174	29,279	57,453	53,466	7.5
Liquica	11,099	27,786	27,272	55,058	45,575	20.8
Manufahi	8,704	22,564	21,671	44,235	38,616	14.6
Manatuto	8,797	19,363	19,217	38,580	35,445	8.8
Oecussi	13,016	29,119	29,402	58,521	45,042	29.9
Viqueque	15,276	32,949	33,485	66,434	62,704	5.9
<b>Total</b>	<b>194,943</b>	<b>467,757</b>	<b>456,885</b>	<b>924,642</b>	<b>787,338</b>	<b>17.4</b>

\* The overall increase in population for Timor-Leste since the 2001 Suco Survey is 137,304 persons or 17.4 percent.

\* Dili has grown by 47,303 persons since 2001, which is equal to a huge 39.3 percent increase in population.

\* Districts to the West have recorded strong population growth since 2001 while those to the East have recorded the lowest growth.

\* Border areas such as Oecussi (29.9 percent), Liquica (20.8 percent) and Bobonaro (17.8 percent) have also shown strong growth since 2001, most probably from refugees returning from West Timor.

\* The Baucau District with an increase in population of only 3,054 or 3.0 percent has recorded the smallest increase over that period.

\* Ermera with 103,169 people is challenging Baucau with 104,571 people as the second most populated district.



United Nations Population Fund

## Sub-District Counts (Provisional)

## Census Timor-Leste 2004

The information in this bulletin is based on the census usually resident population count on census day and also includes visitors.

### Introduction

On July 11th, 2004, the first census of Timor-Leste as a new nation was taken. This bulletin contains a summary of key information on Sub-Districts, available from the provisional counts and makes comparisons with counts from the 2001 Suco Survey totals as appropriate.

### Population Counts by District

District	Number of Households	Population		Totals 2004 Census	2001 Suco Survey	Percent Difference +/-
		Male	Female			
Aileu	8,177	19,049	17,840	36,889	31,826	15.9
Ainaro	12,128	26,964	26,665	53,629	45,092	18.9
Baucau	23,815	52,483	52,088	104,571	101,517	3.0
Bobonaro	18,575	40,955	41,430	82,385	69,932	17.8
Covalima	10,546	28,018	27,923	55,941	49,234	13.6
Dili	30,400	88,373	79,404	167,777	120,474	39.3
Ermera	21,028	51,960	51,209	103,169	88,415	16.7
Lautem	13,382	28,174	29,279	57,453	53,466	7.5
Liquica	11,099	27,786	27,272	55,058	45,575	20.8
Manufahi	8,704	22,564	21,671	44,235	38,616	14.6
Manatuto	8,797	19,363	19,217	38,580	35,445	8.8
Oecussi	13,016	29,119	29,402	58,521	45,042	29.9
Viqueque	15,276	32,949	33,485	66,434	62,704	5.9
<b>Total</b>	<b>194,943</b>	<b>467,757</b>	<b>456,885</b>	<b>924,642</b>	<b>787,338</b>	<b>17.4</b>

#### Aileu

Sub District	Number of Households	Population		Total	2001 Suco Survey	Percent Difference
		Male	Female			
Aileu	3,642	8,846	8,480	17,326	14,535	19.2
Remexio	1,844	4,743	4,509	9,252	8,776	5.4
Lequidoe	1,387	3,162	2,879	6,041	4,252	42.1
Laulara	1,304	2,298	1,972	4,270	4,263	0.2
<b>Total</b>	<b>8,177</b>	<b>19,049</b>	<b>17,840</b>	<b>36,889</b>	<b>31,826</b>	<b>15.9</b>



## Sub-District Counts

### Ainaro

Sub District	Number of Households	Population		Total	2001 Suco Survey	Percent Difference
		Male	Female			
Ainaro	2,902	6,871	6,796	13,667	10,562	29.4
Hatu Bulico	2,333	5,453	5,343	10,796	9,770	10.5
Maubisse	4,816	10,097	10,075	20,172	17,623	14.5
Hatudo	2,077	4,543	4,451	8,994	7,137	26.0
<b>Total</b>	<b>12,128</b>	<b>26,964</b>	<b>26,665</b>	<b>53,629</b>	<b>45,092</b>	<b>18.9</b>

### Bobonaro

Sub District	Number of Households	Population		Total	2001 Suco Survey	Percent Difference
		Male	Female			
Atabae	2,098	4,816	4,737	9,553	8,195	16.6
Balibo	3,224	6,867	6,735	13,602	8,207	65.7
Bobonaro	5,044	10,741	11,280	22,021	21,293	3.4
Cailaco	1,987	4,209	4,196	8,405	7,833	7.3
Lolotoe	1,520	3,427	3,594	7,021	6,450	8.9
Maliana	4,702	10,895	10,888	21,783	17,954	21.3
<b>Total</b>	<b>18,575</b>	<b>40,955</b>	<b>41,430</b>	<b>82,385</b>	<b>69,932</b>	<b>17.8</b>

### Baucau

Sub District	Number of Households	Population		Total	2001 Suco Survey	Percent Difference
		Male	Female			
Baguia	2,260	4,586	4,840	9,426	9,962	-5.4
Baucau	8,566	20,815	20,063	40,878	36,616	11.6
Laga	4,048	8,010	8,063	16,073	16,275	-1.2
Quelicai	3,973	7,793	8,125	15,918	16,995	-6.3
Vemase	1,834	4,135	3,992	8,127	6,912	17.6
Venilale	3,134	7,144	7,005	14,149	14,757	-4.1
<b>Total</b>	<b>23,815</b>	<b>52,483</b>	<b>52,088</b>	<b>104,571</b>	<b>101,517</b>	<b>3.0</b>

### Covalima

Sub District	Number of Households	Population		Total	2001 Suco Survey	Percent Difference
		Male	Female			
Fatululic	366	909	984	1,893	1,982	-4.5
Fatumean	698	1,712	1,672	3,384	3,121	8.4
Fohorem	804	2,172	2,089	4,261	4,477	-4.8
Maucatar	1,107	3,010	3,008	6,018	7,119	-15.5
Suai	4,025	11,145	11,095	22,240	16,540	34.5
Tilomar	1,189	3,154	3,068	6,222	5,993	3.8
Zumalai	2,357	5,916	6,007	11,923	10,002	19.2
<b>Total</b>	<b>10,546</b>	<b>28,018</b>	<b>27,923</b>	<b>55,941</b>	<b>49,234</b>	<b>13.6</b>



## Sub-District Counts

### Dili

Sub District	Number of Households	Population		Total	2001 Suco Survey	Percent Difference
		Male	Female			
Vera Cruz	5,803	17,597	15,866	33,463	25,421	31.6
Nain Feto	3,895	12,049	10,751	22,800	17,399	31.0
Metinaro	772	1,875	1,882	3,757	3,001	25.2
Atauro	1,696	3,883	3,974	7,857	7,122	10.3
Dom Aleixo	11,014	31,124	27,335	58,459	34,708	68.4
Cristo Rei	7,220	21,845	19,596	41,441	32,823	26.3
<b>Total</b>	<b>30,400</b>	<b>88,373</b>	<b>79,404</b>	<b>167,777</b>	<b>120,474</b>	<b>39.3</b>

### Ermera

Sub District	Number of Households	Population		Total	2001 Suco Survey	Percent Difference
		Male	Female			
Railaco	1,632	4,560	4,321	8,881	6,897	28.8
Ermera	5,546	14,195	14,022	28,217	23,962	17.8
Letefoho	4,361	10,152	9,878	20,030	18,559	7.9
Atsabe	3,437	7,852	7,997	15,849	12,506	26.7
Hatolia	6,052	15,201	14,991	30,192	26,491	14.0
<b>Total</b>	<b>21,028</b>	<b>51,960</b>	<b>51,209</b>	<b>103,169</b>	<b>88,415</b>	<b>16.7</b>

### Liquica

Sub District	Number of Households	Population		Total	2001 Suco Survey	Percent Difference
		Male	Female			
Bazartete	3,871	9,791	9,872	19,663	17,689	11.2
Liquica	3,583	9,660	9,120	18,780	15,641	20.1
Maubara	3,645	8,335	8,280	16,615	12,245	35.7
<b>Total</b>	<b>11,099</b>	<b>27,786</b>	<b>27,272</b>	<b>55,058</b>	<b>45,575</b>	<b>20.8</b>

### Lautem

Sub District	Number of Households	Population		Total	2001 Suco Survey	Percent Difference
		Male	Female			
<b>Lautem</b>						
Lospalos	6,045	13,559	14,066	27,625	22,696	21.7
Lautem	3,345	6,426	6,576	13,002	14,395	-9.7
Iliomar	1,606	3,101	3,497	6,598	6,803	-3.0
Luro	1,596	3,501	3,435	6,936	6,313	9.9
Tutuala	790	1,587	1,705	3,292	3,259	1.0
<b>Total</b>	<b>13,382</b>	<b>28,174</b>	<b>29,279</b>	<b>57,453</b>	<b>53,466</b>	<b>7.5</b>



## Sub-District Counts

### Manufahi

Sub District	Number of Households	Population		Total	2001 Suco Survey	Percent Difference
		Male	Female			
Same	5,088	12,764	12,267	25,031	21,284	17.6
Alas	1,287	3,262	3,201	6,463	5,253	23.0
Fatuberliu	1,226	3,228	3,096	6,324	6,567	-3.7
Turiscaí	1,103	3,310	3,107	6,417	5,512	16.4
<b>Total</b>	<b>8,704</b>	<b>22,564</b>	<b>21,671</b>	<b>44,235</b>	<b>38,616</b>	<b>14.6</b>

### Manatuto

Sub District	Number of Households	Population		Total	2001 Suco Survey	Percent Difference
		Male	Female			
Manatuto	2,644	5,719	5,409	11,128	9,551	16.5
Laleia	914	1,584	1,604	3,188	3,183	0.2
Lacio	1,481	3,173	3,165	6,338	5,446	16.4
Soibada	543	1,445	1,481	2,926	2,992	-2.2
Barique/Natarbora	1,108	2,547	2,356	4,903	4,462	9.9
Laclubar	2,107	4,895	5,202	10,097	9,811	2.9
<b>Total</b>	<b>8,797</b>	<b>19,363</b>	<b>19,217</b>	<b>38,580</b>	<b>35,445</b>	<b>8.8</b>

### Oecusse

Sub District	Number of Households	Population		Total	2001 Suco Survey	Percent Difference
		Male	Female			
Pante Makassar	6,666	14,682	14,431	29,113	22,771	27.9
Nitibe	2,588	5,481	5,504	10,985	8,352	31.5
Oesilo	2,609	5,329	5,563	10,892	9,975	9.2
Passabe	1,153	3,627	3,904	7,531	3,944	90.9
<b>Total</b>	<b>13,016</b>	<b>29,119</b>	<b>29,402</b>	<b>58,521</b>	<b>45,042</b>	<b>29.9</b>

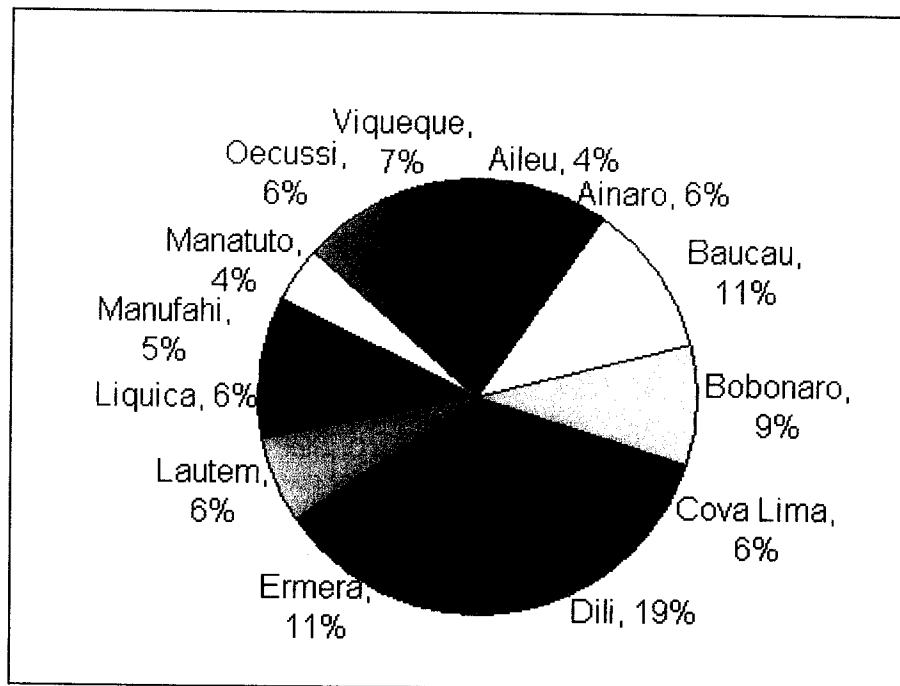
### Viqueque

Sub District	Number of Households	Population		Total	2001 Suco Survey	Percent Difference
		Male	Female			
Uatucarbau	1,483	3,120	3,307	6,427	5,946	8.1
Ossu	3,991	8,104	8,435	16,539	16,989	-2.6
Watulari	3,761	8,052	8,530	16,582	15,618	6.2
Viqueque	4,730	10,793	10,555	21,348	18,885	13.0
Lacluta	1,311	2,880	2,658	5,538	5,266	5.2
<b>Total</b>	<b>15,276</b>	<b>32,949</b>	<b>33,485</b>	<b>66,434</b>	<b>62,704</b>	<b>5.9</b>

**Census website : <http://dne.mopf.gov.tp>**

Information from the 2004 Census is available on the census website above. You can access this information free. Some mapping information from the census is also available directly via this source

## Percentage Population by District



\* Dili has now grown to 19 percent of the population (16 percent in 2001), at the expense of Baucau, Viqueque and Manatuto which have all dropped.

## Male and Female Ratio

In 2001, the Male population was estimated at 398,403 while Females were estimated at 388,935 giving a ratio of Males to Females of 50.6 to 49.4 percent. In 2004 the number of Males was recorded at 467,757 and Females at 456,885 leaving the ratio unchanged. In Dili, the Male population was recorded at 88,373 while the Female population was 79,404, giving a percentage ratio of 52.7 to 47.3. The Districts of Lautem, Bobonaro, Oecussi and Viqueque all recorded more Females than Males.

## Households

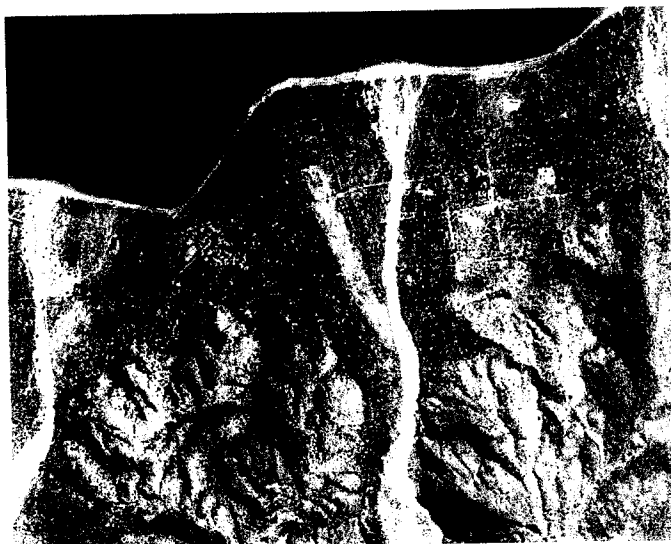
The Census covers both population and housing and so records all habitable dwellings which are empty as well as those from which interviews were carried out. Dwellings that are destroyed and not habitable of which there are many, are not counted. The total number of households recorded in the census was 194,943 representing a growth of 16.4 percent over the 167,435 recorded in the 2001 Suco Survey.



## Provisional Counts

### Mapping and GPS

The Global Positioning System (GPS) was used extensively in the 2004 Census to record the location of each household. This meant it could be used as a checking tool to ensure that all areas of Timor-Leste were covered and as a means of publishing geographical data on the census.



\* Liquica District is made up of a small coastal plain with mountainous areas inland. The map alongside shows a sample of GPS records for houses in the Liquica District. It can be seen that interviewer coverage, especially in the mountain areas is complete.

\* Census maps used by interviewers were based on digitised aerial photographic maps of Timor-Leste taken by the Australian Defence Forces in 2001 and made available to Census by the Department of Justice - Lands and Property Office.

### For more information on the 2004 Census

The National Statistics Directorate has collected a considerable amount of information from the 2004 Census. This will be made available in other publications, on Cd and in other formats towards the end of the year. Census information is a resource available to Government, District Administrations, Suco Administrations, International Agencies, NGO's, businesses, communities and the public of Timor-Leste. Topics include:

age

sex

birthplace

mother tongue

languages

marital status

religion

occupation

livestock owned

crops grown

**Census website : <http://dne.mopf.gov.tp>**

Information from the 2004 Census is available on the census website above. You can access this information free. Some mapping information from the census is also available directly via this source