

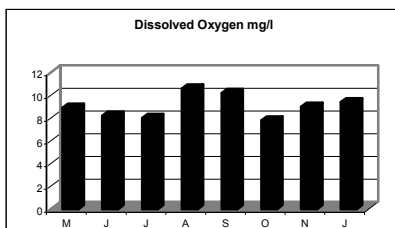
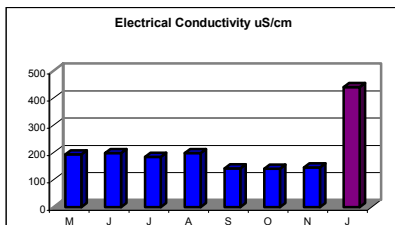
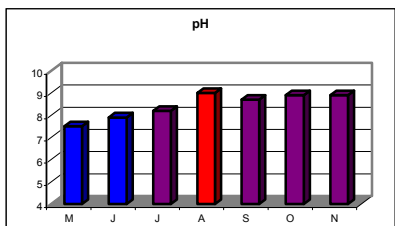
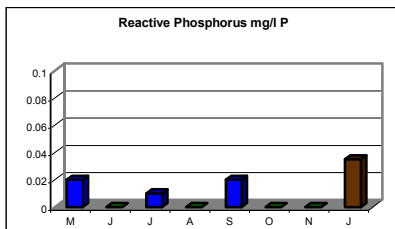
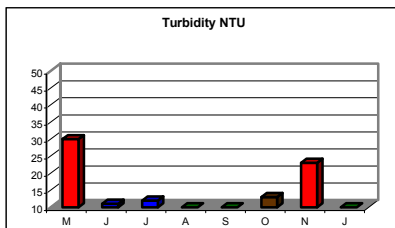
# Lower Tuggeranong Creek—Tuggeranong Creek



## Participant Comments: J. Horsfield

- Light rainfall did not impact on water quality.
- Low flow rates throughout the year have been fairly constant.
- No sedimentation as such, but growth of reeds and algae choke off the water flow.
- Pollution upstream (i.e. in dam or Upper Tuggeranong creek catchment) may occasionally cause high phosphate levels.
- There is a resurgence of weeds and many trees have died. The water levels below the dam wall is low and has little movement in it.
- Some resident populations of small scrub birds (e.g. wrens) have come back.
- No rehabilitation programs have been implemented.
- Increase in the algae have spread over the surface of rocks and waterways.

## Water Quality



## Habitat Recovery



June 2003