

MUNICIPAL HERITAGE INVENTORY

PRECINCT 9 - COMO

Incorporates all adoption and deletion of places by the Council as at 28 February 2006.

- Co 1 Penrhos College and Pine Trees
- Co 2 Pine Trees at Collier Golf Course
- Co 3 Residence: 426 Canning Highway - 'Blue Waters'

CITY OF SOUTH PERTH**MUNICIPAL HERITAGE INVENTORY
PLACE RECORD FORM
Prepared by *Heritage* TODAY****LGA Place No: Co 1****Penrhos College and Pine Trees****Photograph of *Penrhos College and Pine Trees***

**The front of the original 1971 Classroom Block (now extended).
(Heritage TODAY 1999)**

LOCATION

HCWA Reference Number	
Other Reference Number	
Name of Place	<i>Penrhos College and Pine Trees</i>
Other names	
Address	6 Morrison Street
Suburb/Town	Como
Local Government Authority	City of South Perth

LAND DESCRIPTION

Reserve No.	Lot	Location No.	Plan/Diagram	Vol/Folio
29866	-	Canning 2199	173604	

PERIOD

	Late Twentieth Century
Design Style	Late Twentieth Century Stripped Classical
Construction Date	1971 (Stage One occupied)
Source/Details	City of South Perth Municipal Heritage Inventory (No.1) 1994.

USE(S) OF PLACE

Original	School and Boarding House
Present	School
Other	

HISTORICAL NOTES

Penrhos College has a history that goes back beyond its current home in Como. The story of private school education in South Perth started with Miss Burnet's school held in the Mends Street Hall. For a number of years children were educated by a variety of teachers who sometimes started schools nearby, in opposition to the one at the hall. This situation continued until one teacher had 'won over' the majority of the pupils and the beaten teacher became resigned to her fate and left. The school at Mends Street Hall also had a number of different names and patrons. One of the last teachers in the hall was Jill Hargrave who had named her school Saint Ann's.

In 1940 the school's population had expanded beyond the capacity of the hall and Jill Hargrave sought other premises. The new Saint Ann's was built on blocks at 13-15 Angelo Street, opposite the Perth Zoo. The school had been a difficult project owing to the outbreak of World War II as building materials and tradesmen were in more limited supply. After the move to the new school, boys were no longer taken into the school over the age of six. In 1951 Jill Hargrave offered Saint Ann's College to the Church of England but they were not interested. However, the Methodist Church bought it to be developed as a sister school to Methodist Ladies College (MLC) in Claremont.

Margaret Way commenced as the new Principal of MLC South Perth in 1952 and continued in the position until 1971. During her time as Principal, Margaret Way guided the school through a number of developments. In 1958 the school became independent of MLC Claremont and in 1961 the school expanded to allow girls to continue their education through to Year 12 standard. Achieving independent status led to a name change for the school in 1964 when Mrs Way chose the Welsh name 'Penrhos' [*'Pen'* meaning 'top' or 'summit', as in mountain or hill, and *'rhos'* meaning 'heath' or 'plain']. There are several places thus named in Wales, including Penrhos castle near Raglan.] The school continued to expand through the 1960s leading to overcrowding and the development of a primary school in an old house on the corner of Onslow and Angelo Streets. However, this house was only a temporary measure as Mrs Way sought a bigger area for her school.

The current site occupied by *Penrhos College* was made available in 1966. Previously the land had been part of the Collier Pine Plantation. Architects Forbes and Fitzhardinge, in consultation with the Principal, Margaret Way developed the original concept plan. Mrs Way had been impressed with the elevations of the University of Western Australia as seen from Stirling Hwy and the school was designed to reflect these elements. The architects developed a plan, which has seen all subsequent additions to the school follow the earlier policies making the school a pleasing aesthetic whole. After the hard work of establishing the school at its new site, Mrs Way retired. The new Principal was Dr Vincent Horner, who stayed at the helm until 1980, when there were 800 students at *Penrhos College*.

Stage One of the buildings including the science laboratories, was completed in 1971 with a Commonwealth Grant. 1971 also saw the introduction of boarding facilities to the school at Colwyn House. Stage Two in 1972 included the original resource centre using Library Grant funding. Considerable fund raising by Parents and Friends resulted in the addition of further classrooms, an Olympic sized pool, a language centre, and a commerce and business centre. New Home Economics and Resource Centres were designed and built as part of Stage Five. The Chapel with its stunning stained glass windows was built in 1986, in the last year of Principal Revd Alan Green (1980-1986). The design was the result of an architectural competition, as was the Performing Arts Centre in 1994. Since 1986 Graham Rixon has been the Principal of *Penrhos College*. The population of the school in 1998 was approximately 1100 students.

DESCRIPTION

The campus of *Penrhos College*, set in undulating grounds, has high integrity, as there has been a conscious effort to continue the Late Twentieth Century Stripped Classical Style that was initiated in the original building program in 1971. The buildings of up to three storeys are built in a salmon coloured brick with aluminium framed windows. The landscaping around the school is extensive and carefully maintained. A stand of *Pine Trees* has been kept at one of the entrances to the school, a remnant of the Collier Pine Plantation.

ASSOCIATIONS**ASSOCIATION TYPE**

Mrs Margaret Way	Founding Principal
Forbes and Fitzhardinge	Architects

HISTORIC THEME/Subtheme**CATEGORIES OF SIGNIFICANCE**

Community Efforts/Education	Aesthetic
	Historic
	Social
	Representative

RATING AND ASSESSMENT**High****Low**

	1	2	3	4	5
Aesthetic value (streetscape, setting)	1 ✓	2	3	4	5
Architectural merit (design features)	1 ✓	2	3	4	5
Rarity value	1	2	3. ✓	4	5
Value as part of a group/precinct	1	2	3	4 ✓	5
Condition	1 ✓	2	3	4	5
Integrity	1	2 ✓	3	4	5

STATEMENT OF SIGNIFICANCE

Penrhos College has aesthetic, historic, social and representative cultural heritage significance. The campus is aesthetically pleasing to the eye and has a high integrity as there has been a conscious attempt to keep all new buildings in a similar style as its initial building program in 1971. The school has a history that extends far back in the story of private school education in South Perth. *Penrhos College* is a fine example of a purpose built campus for K-12 education.

MANAGEMENT RECOMMENDATIONS**Management Category: C**

Retain and conserve if possible: endeavour to conserve the significance of the place through the provisions of the Town Planning Scheme. A more detailed Heritage Assessment/Impact Statement may be required before approval given for any major redevelopment or demolition. Photographically record the place prior to demolition.

HERITAGE LISTINGS BY OTHER BODIES

For current information relating to listings by other bodies, it is important to check with the Heritage Council of Western Australia, National Trust and Australian Heritage Commission, as they are continually expanding their databases.

SUPPORTING INFORMATION/BIBLIOGRAPHY

- City of South Perth Municipal Heritage Inventory (No.1) 1994.
- Clarke, S., (Compiler) *Penrhos: Her Heritage*, Lamb Printers, WA, 1988.
- Apperly, R., Irving, R., Reynolds, P., *A Pictorial Guide to Identifying Australian Architecture*, Angus and Robertson NSW, 1989.

HISTORY OF LISTING IN MUNICIPAL HERITAGE INVENTORY

	Date Adopted by Council
Initial listing in MHI	December 1994
Updated	February 1996
Review of MHI	June 2000
Review of MHI	February 2006



Pine Trees – remnants of the former Collier Pine Plantation.
(Heritage TODAY 1999)



**One of the original classroom blocks
now Science Department and Staffroom.**
(Heritage TODAY 1999)



Colwyn Boarding House.
(Heritage TODAY 1999)



Menai Boarding House.
(Heritage TODAY 1999)



Entry to Senior School and Performing Arts Centre (note the Chapel on the right in background).
(Heritage TODAY 1999)



Performing Arts Centre.
(Heritage TODAY 1999)



One of two very creative stained glass windows in the Penrhos College Chapel.
(Heritage TODAY 1999)



Chapel Alter.
(Heritage TODAY 1999)



Entry to Chapel.
(Heritage TODAY 1999)

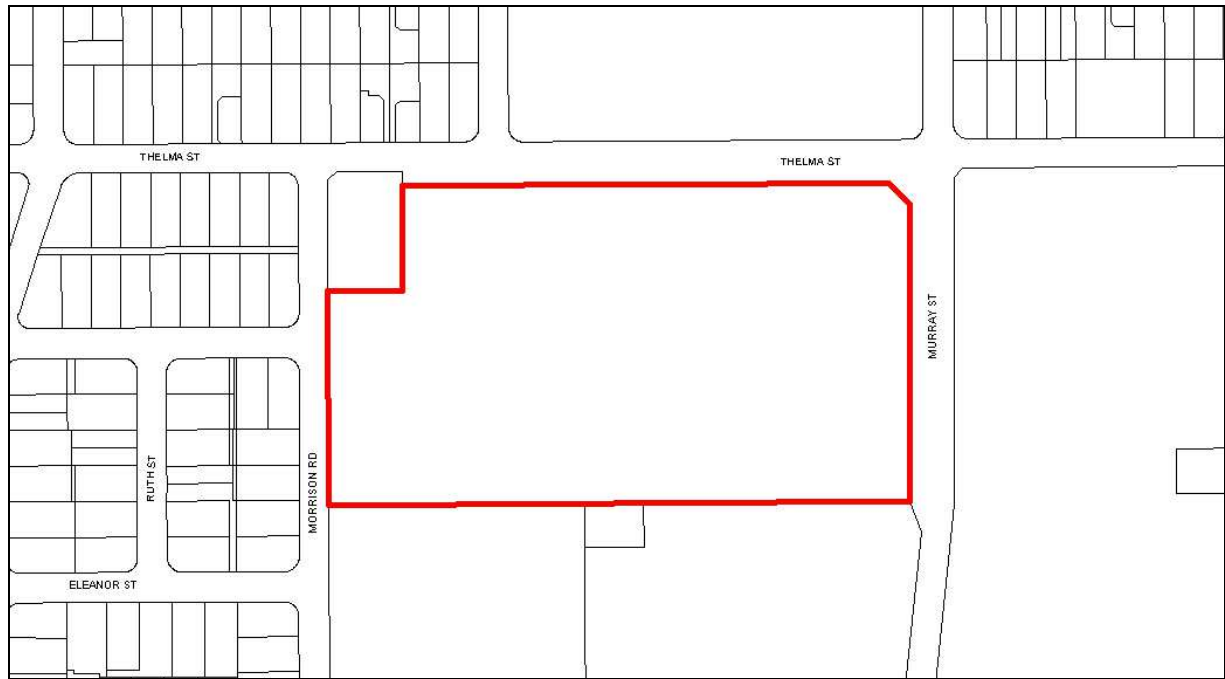


Junior School 1976.
(Heritage TODAY 1999)



**Magnolia Tree planted in 1997 as a Memorial to
Amanda Young, a former pupil of the school.
(*Heritage TODAY* 1999)**

LOCATION



CITY OF SOUTH PERTHManagement
Category**B****MUNICIPAL HERITAGE INVENTORY
PLACE RECORD FORM
Prepared by *Heritage* TODAY****LGA Place No: Co 2****Pine Trees at Collier Golf Course****Photograph of the *Pine Trees at Collier Golf Course***

A view of some of the *Pine Trees at Collier Golf Course*.
(Gina Fraser, City of South Perth. January 2007.)

LOCATION

HCWA Reference Number	
Other Reference Number	
Name of Place	<i>Pine Trees at Collier Golf Course</i>
Other names	Collier Pine Plantation
Address	
Suburb/Town	Como
Local Government Authority	City of South Perth

LAND DESCRIPTION

Reserve No.	Lot	Location No.	Plan/Diagram	Vol/Folio
36435, 38794, 1947291	-	Canning 3817, 3436, 3761	36435, 218457, 190445	

PERIOD	Inter-War
Planting Date	c1925 - 1930
Source/Details	Florey, Cecil C. <i>Peninsular City: A Social History of the City of South Perth</i> , City of South Perth, WA, 1995.

USE(S) OF PLACE

Original	Pine plantation
Present	Remnant trees amidst development
Other	

HISTORICAL NOTES

The Collier Pine Plantation was planted out after 1925, with the expectation that the trees would be cut down in the 1960s, and that the land would then be used for public purposes. The original area of trees was 900 acres, and the plantation was divided roughly in half by the boundary between the City of Perth and the City of South Perth. At the time there was some opposition to the scheme, with allegations that seedlings had been planted too close together, and that no weeding was being done between rows, resulting in the death of 95% of the first seedlings. However, the plantation eventually took off, with the trees growing to maturity over the next 30 years.

To relieve the housing shortages after 1947, homes were built close to the northern and eastern boundaries of the plantation. The areas of Collier and Como filled in around the plantation. In 1957 the first institution was built within the plantation, namely Ngai-A, a mothercraft centre, initially for unwed mothers.

By 1962 the original plantation area had been reduced from 900 acres to 600. A number of institutions grew up in the plantation area over the years that followed, including Bentley High School, Rowethorpe Retirement Village, Swan Cottages, Como High School, the West Australian Institute of Technology (later Curtin University), and Penrhos College (1971). In the late 1980s the Collier Golf Course was developed on a large parcel of land bordered by Thelma Street, Kent Street and Hayman Road. The *Pine Trees at Collier Golf Course* which were preserved are an attractive reminder of the earlier Collier Pine Plantation.

DESCRIPTION

The Collier Golf Course was built on land previously planted with pine trees, known as the Collier Pine Plantation. When the Golf Course was built in the late 1980s many of the trees were preserved, mainly along the boundary of the Golf Course property. The *Pine Trees at Collier Golf Course* generally have long straight trunks, with the greenery clustered at the top - in the manner of plantation pine trees.

ASSOCIATIONS**ASSOCIATION TYPE**

--	--

HISTORIC THEME/Subtheme**CATEGORIES OF SIGNIFICANCE**

Occupations/ <i>Timber</i>	Aesthetic
	Historic
	Representative

RATING AND ASSESSMENT**High****Low**

Aesthetic value (streetscape, setting)	1	2 ✓	3	4	5
Rarity value	1	2 ✓	3	4	5
Value as part of a group/precinct	1 ✓	2	3	4	5
Condition	1	2 ✓	3	4	5
Integrity	1	2	3 ✓	4	5

STATEMENT OF SIGNIFICANCE

The *Pine Trees at Collier Golf Course* have aesthetic, historic and representative cultural heritage significance. They are some of the last remnants of the original Collier Pine Plantation, established in the late 1920s. The plan was to harvest the trees by the 1960s, and then release the land for public purposes. A number of institutions have been built in the area which was formerly the plantation and selected trees have been retained. They provide an aesthetic backdrop for a wide range of institution buildings which include Curtin University, the headquarters of the Dept of Conservation and Land Management, Penrhos College and the Collier Golf Course, among others.

MANAGEMENT RECOMMENDATIONS

Management Category: B

Worthy of a high level of protection: provide maximum encouragement to the owner under the City of South Perth Town Planning Scheme to conserve the significance of the place. A more detailed Heritage Assessment/Impact Statement to be undertaken before approval given for any major redevelopment. Incentives to promote conservation should be considered.

HERITAGE LISTINGS BY OTHER BODIES

For current information relating to listings by other bodies, it is important to check with the Heritage Council of Western Australia, National Trust and Australian Heritage Commission, as they are continually expanding their databases.

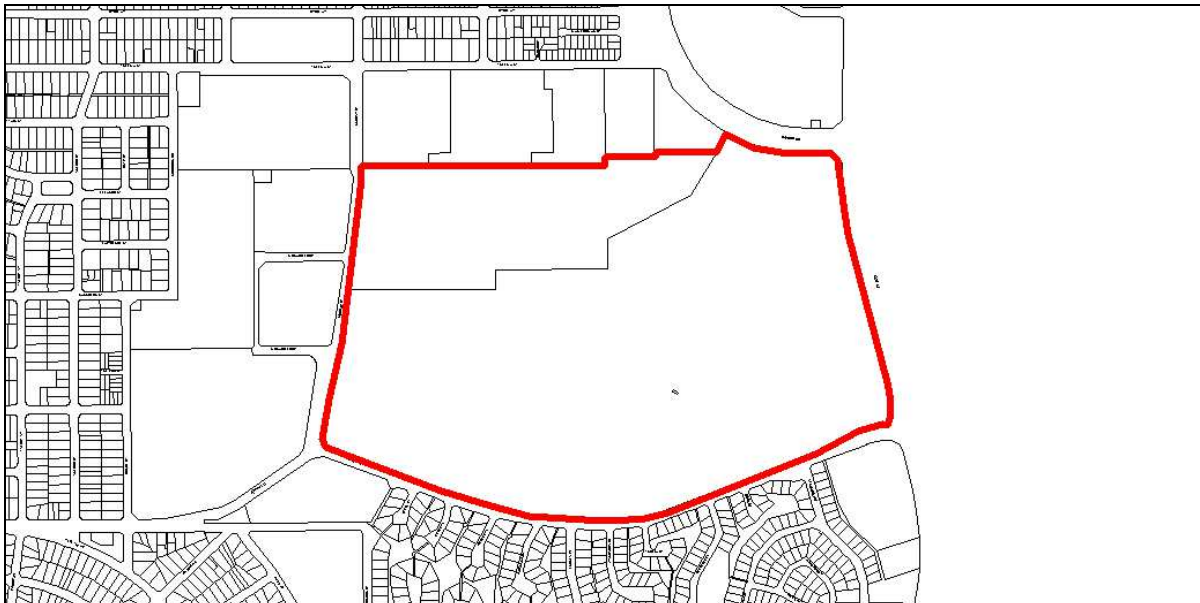
SUPPORTING INFORMATION/BIBLIOGRAPHY

- Florey, Cecil C. *Peninsular City: A Social History of the City of South Perth*, City of South Perth, WA, 1995.

HISTORY OF LISTING IN MUNICIPAL HERITAGE INVENTORY

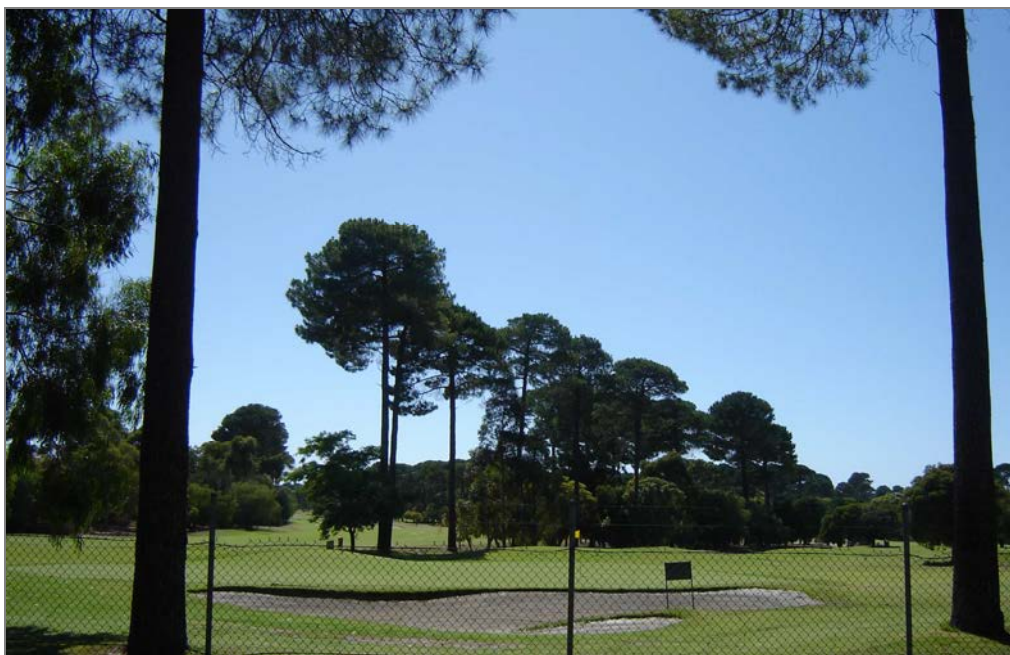
	Date Adopted by Council
Initial listing in MHI	December 1994
Review of MHI	June 2000
Update / Review of MHI	February 2006

LOCATION





(Heritage TODAY 1999)



A view of some of the Pine Trees at Collier Golf Course.
(Gina Fraser, City of South Perth. January 2007.)

CITY OF SOUTH PERTHManagement
Category**B****MUNICIPAL HERITAGE INVENTORY
PLACE RECORD FORM**
Prepared by *Heritage* TODAY

LGA Place No: Co 3

Residence: 426 Canning Highway -
'Blue Waters'

Photograph of the Residence: 426 Canning Highway - 'Blue Waters'

*(Heritage TODAY 1999)***LOCATION**

HCWA Reference Number	
Other Reference Number	
Name of Place	<i>Residence: 426 Canning Highway - 'Blue Waters'</i>
Other names	
Address	426 Canning Highway
Suburb/Town	Como
Local Government Authority	City of South Perth

LAND DESCRIPTION

Reserve No.	Lot	Location No.	Plan/Diagram	Vol/Folio
N/A	206	Swan 42	4156	

PERIOD	Post War (c1940-1960)
Design Style	Functionalist/International
Construction Date	1951
Source/Details	Oral History

USE(S) OF PLACE

Original	Residence
Present	Residence
Other	

HISTORICAL NOTES

Despite this *Residence: 426 Canning Highway - 'Blue Waters'* being recognised by two eminent architectural authorities as 1930s design style, it appears the house was actually built in 1951. It has been described as having functionalist, Art Deco and International Cubist characteristics.

DESCRIPTION

The *Residence: 426 Canning Highway - 'Blue Waters'* is situated on Canning Highway set back some distance from the road. It has a dominant curved (almost circular) two storey section with a one storey wing. The single garage is situated under the house. The mature palm trees that are the main feature of the landscaping in the front yard appear to fit with the almost nautical feel of the house.

This *Residence: 426 Canning Highway - 'Blue Waters'* has many features that place it in the Functionalist/Art Deco design style category. These include asymmetrical massing, simple geometric shapes, long horizontal balcony (similarities to a ship), roof concealed behind parapet, rounded corner and windows with curved glass and aluminium frames.

The house, though built in 1951, has the classic lines of a style of architecture first introduced in the 1920s and 1930s, which emphasised functionalism, clean lines and a complete disassociation from the past.

ASSOCIATIONS**ASSOCIATION TYPE**

HISTORIC THEME/Subtheme**CATEGORIES OF SIGNIFICANCE**

Demographic Settlement/ Residential Land Subdivision	Aesthetic
	Historic
	Rarity

RATING AND ASSESSMENT**High****Low**

Aesthetic value (streetscape, setting)	1	2 ✓	3	4	5
Architectural merit (design features)	1 ✓	2	3	4	5
Rarity value	1	2 ✓	3	4	5
Value as part of a group/precinct	1	2	3 ✓	4	5
Condition	1	2 ✓	3	4	5
Integrity	1	2 ✓	3	4	5

STATEMENT OF SIGNIFICANCE

Residence: 426 Canning Highway - 'Blue Waters' has aesthetic, representative and rarity cultural heritage significance. It has been recognised by a number of heritage and architectural professionals for its unusual design style. It has high streetscape value and is a fine representative of functionalist architecture. Residences of this design style with such high integrity and few changes to the original external plan are rare in the City of South Perth.

MANAGEMENT RECOMMENDATIONS

Management Category B
 Requires a high level of protection: provide maximum encouragement to the owner under the City of South Perth Town Planning Scheme to conserve the significance of the place. A more detailed Heritage Assessment/Impact Statement to be undertaken before approval given for any development. Incentives to promote conservation should be considered.

HERITAGE LISTINGS BY OTHER BODIES

For current information relating to listings by other bodies, it is important to check with the Heritage Council of Western Australia, National Trust and Australian Heritage Commission, as they are continually expanding their databases.

SUPPORTING INFORMATION/BIBLIOGRAPHY

- Apperly, R., Irving, R., Reynolds, P., *A Pictorial Guide to Identifying Australian Architecture*, Angus and Robertson NSW, 1989.
- City of South Perth Municipal Heritage Inventory (No.1) 1994.
- Molyneux, I., *Looking around Perth: A Guide to the Architecture of Perth and Surrounding Towns*. The Royal Institute of Architects, 1981.

HISTORY OF LISTING IN MUNICIPAL HERITAGE INVENTORY

	Date Adopted by Council
Initial listing in MHI	December 1994
Review of MHI	June 2000
Update / Review of MHI	February 2006

LOCATION





View of the classic front garden and Residence: 426 Canning Highway - 'Blue Waters' c1960.
(Courtesy of Mr David Cavanagh, 2006 owner.)



The hand-dug pool at the rear of Residence: 426 Canning Highway - 'Blue Waters' c1960.
(Courtesy of Mr David Cavanagh, 2006 owner.)



Front porch, steps and entrance.
(Gina Fraser, City of South Perth, 2006.)



View northwards from the balcony towards the City.
(Gina Fraser, City of South Perth, 2006.)



View along front balcony towards curved window feature.

(Gina Fraser, City of South Perth, 2006.)



Etching of sailing ship and birds on a rear window.

(Gina Fraser, City of South Perth, 2006.)