



Contract Region 10

Hurstville - Miranda - Menai - Bankstown



MINISTRY OF TRANSPORT

Connex NSW is undertaking a review of bus services in Contract Region 10 with a view to introducing an integrated bus network in 2006. This profile of Contract Region 10 has been prepared by the Ministry of Transport to assist stakeholders in preparing suggestions on issues which they may wish Connex to take into account in designing a new bus network in the region. This paper outlines some background geographic and demographic information and provides details of transport in the area and existing travel patterns of residents. The data comes from a variety of sources (see explanatory note on page 9).

Geography

Description

Contract Region 10 is located in the most southern suburbs of the Sydney metropolitan area, and is centred on the suburbs in and around Sutherland. It is roughly bounded by Bankstown in the north, Padstow and Lucas Heights in the west, through Sutherland to Waterfall in the south, east as far as Miranda, then north again as far as Bexley and Kingsgrove.

Area

Contract Region 10 comprises all or part of 26 postcodes and covers an area of 17 216 hectares.

Electorates

Contract Region 10 encompasses part of the State electorates of Miranda, Menai, Heathcote, Georges River, Rockdale, Kogarah and East Hills.

Local Government Area (LGA)

The Region covers parts of the LGAs of Sutherland, Bankstown, Kogarah, Rockdale, and Hurstville.

LGAs	LGAs as % pop of region
Sutherland	51%
Bankstown	27%
Kogarah	10%
Rockdale	7%
Hurstville	6%

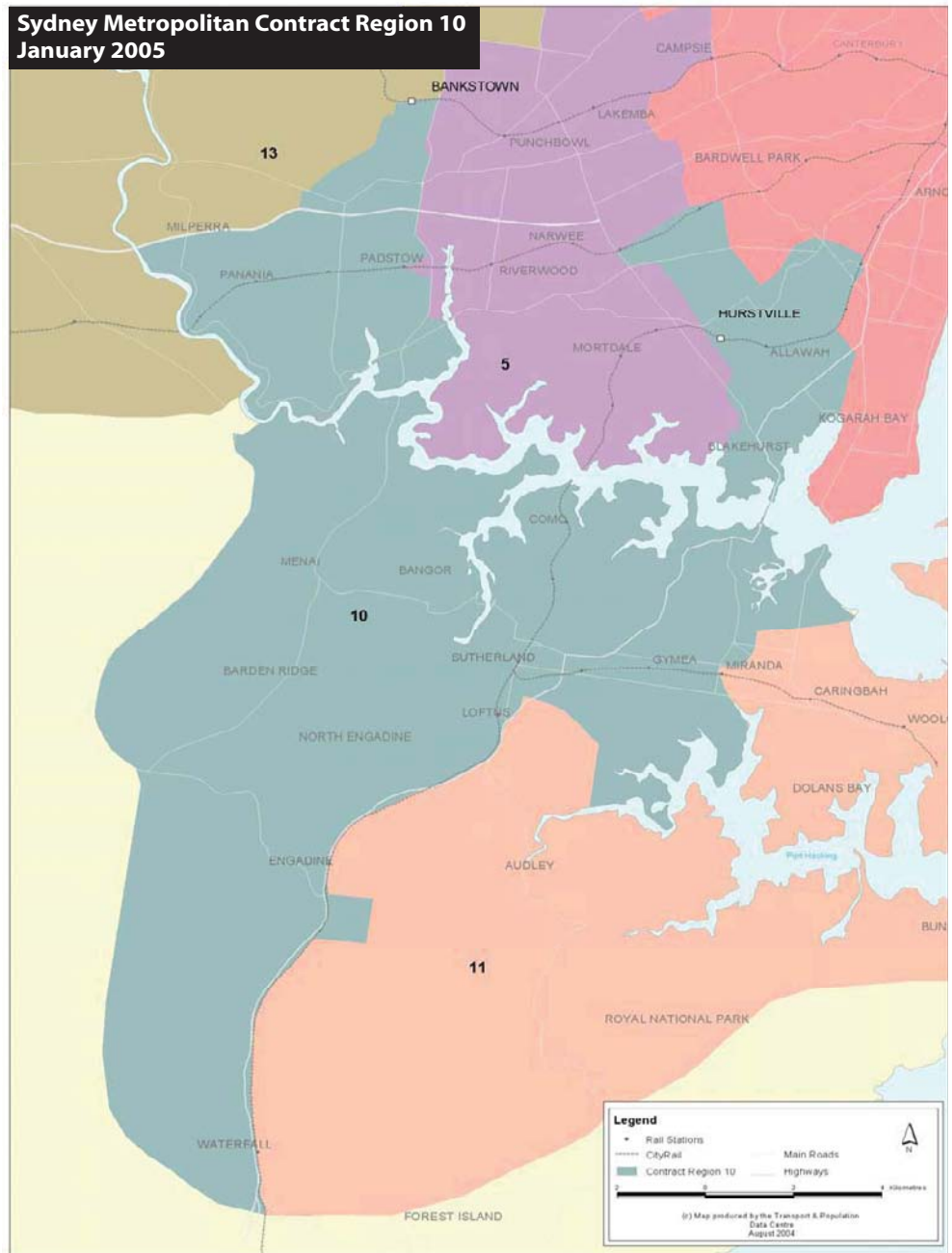
Regional Organisation of Councils

Sutherland, Kogarah, Rockdale and Hurstville Councils are all members of the Southern Sydney Regional Organisation of Councils (SSROC). Bankstown is a member of the Western Sydney Regional Organisation of Councils (WESROC)

Adjoining Contract Regions

Contract Region 10 is adjoined by Regions 13 and 5 to the north, Region 6 to the north-east and Region 11 to the east.

Sydney Metropolitan Contract Region 10
January 2005



Facilities

Aged Care facilities

Sixty four Aged Care facilities (self care, hostel, retirement villages and nursing homes) have been identified in Contract Region 10 (see Appendix 1 for a list of low care facilities in the region).

Hospitals

There are three public and four private hospitals that serve the residents of Contract Region 10.

Public

Sutherland Hospital, Caringbah
St George Hospital, Kogarah
Bankstown-Lidcombe Hospital, Bankstown

Private

Calvary Hospital, Beverley Park
President Private Hospital, Kirrawee
Kareena Private Hospital, Caringbah
St George Private Hospital, Kogarah

Educational Institutions (Universities, TAFE)

There are no universities within the region although the University of Western Sydney, Milperra Campus is nearby.

Sydney Institute of TAFE has 5 campuses in the region: Loftus, St George (Kogarah), Padstow, Gymea and Bankstown.

Tabor College, Miranda, a Christian tertiary education institution, is also within the region.

Educational Institutions (schools)

In the region there are:

- 21 high schools
- 49 primary schools
- 1 infants school
- 4 K-12 schools and
- 6 special schools.

and a number of schools nearby which serve the area (see Appendix 2).

Centres

A regional centre is generally located at a major rail station, has a department store(s), discount department store, a large range of specialty shops, cinemas and restaurants and office employment. It is generally the hub of a bus network. District centres provide a large supermarket and a limited range of specialty shops. Some district centres have a discount department store.

Regional Centres

Bankstown Hurstville Miranda

District Centres

Engadine Gymea Illawong
 Jannali Kareela Kogarah
 Menai Padstow Panania
 Revesby Rockdale Sutherland
 Sylvania

Data collected for the Household Travel Survey on all travel (walk, cycle, car, bus, train and other trips) is mapped to illustrate the catchment area for travel to centres.

Miranda

The catchment to Miranda covers most of the Sutherland Local Government Area, extending from the Georges River in the north to the Port Hacking in the south, and from Cronulla in the east to the Menai and Holsworthy tablelands to the west.

Major (>5001 trips) use occurs over the whole area with the exception of the Kurnell and Illawong peninsulas, where use is <1000 trips. There are dispersed pockets of low level use as far as the City, Liverpool, Bankstown, Wiley Park-Lakemba and Kyeemagh.

Bankstown

The catchment for Bankstown is dispersed. There are high concentrations (>5001 trips) in a band extending east from Villawood through Yagoona to Bankstown and across to Lakemba, with a southerly projection through Punchbowl, Riverwood and Lugarno across to Padstow Heights. There is another high concentration in the Revesby area.

Extending from this concentration, there is a lower level of use (<1000 trips) south to Menai, and west through Moorebank to Liverpool.

A lower level of trips to Bankstown also occurs in far flung pockets including Penrith, Mt Druitt, Blacktown, Bringelly, Camden, Minto, Parramatta, Gordon, Bondi Beach and Cronulla.

Hurstville

Trips focussed on Hurstville originate mainly in the St George area, from Hurstville, Kogarah and Rockdale LGAs. Lower level use stretches out to the south (generally following the railway lines to Waterfall and Cronulla, and including Kurnell), and north from Padstow and Bankstown to the City.

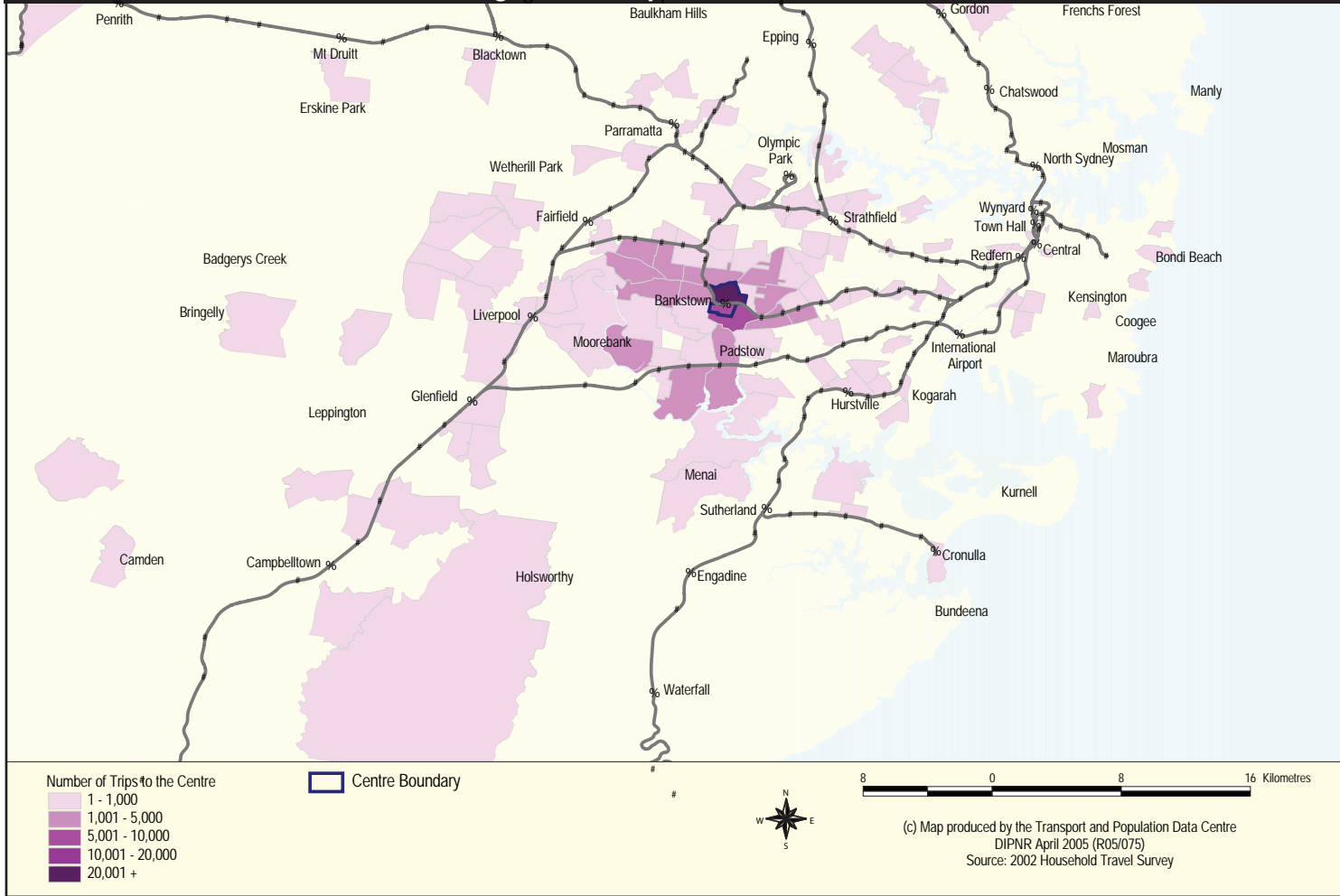
Other pockets of low level use include Camden, Bringelly, Liverpool, Penrith, and Botany.

Suburbs, % in Region, LGA and Electorate

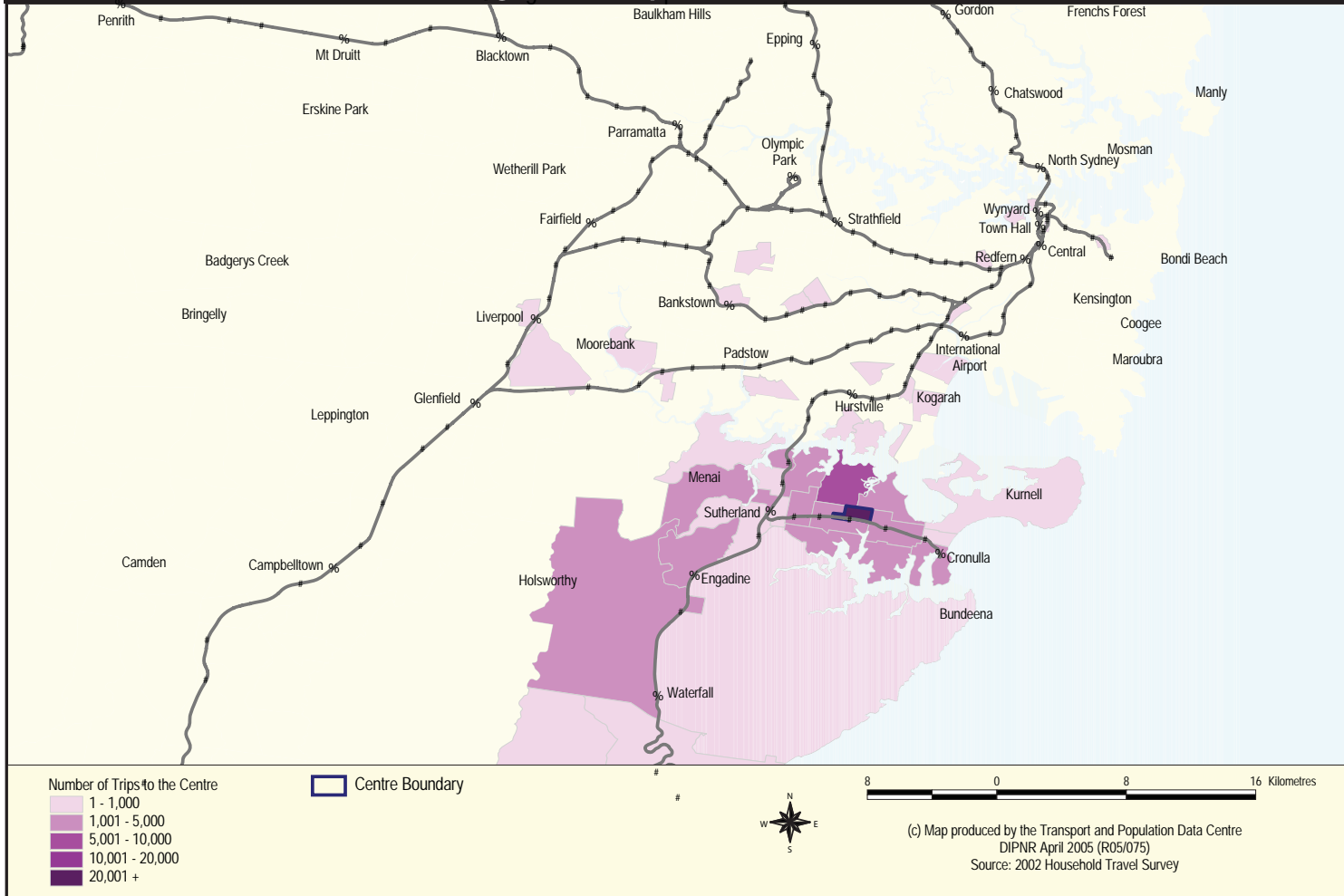
Suburb	% in CR 10	Contract Region 10 LGA	Contract Region 10 Electorate
Alfords Point	100	Sutherland	Menai
Allawah	100	Kogarah	Kogarah
Bangor	100	Sutherland	Menai
Barden Ridge	100	Sutherland	Menai
Bonnet Bay	100	Sutherland	Heathcote
Carlton	100	Kogarah	Kogarah
Carss Park	100	Kogarah	Kogarah
Como	100	Sutherland	Miranda/Heathcote
Gymea	100	Sutherland	Miranda
Gymea Bay	100	Sutherland	Miranda
Heathcote	100	Sutherland	Heathcote
Jannali	100	Sutherland	Miranda
Kangaroo Point	100	Sutherland	Miranda
Kareela	100	Sutherland	Miranda
Kirrawee	100	Sutherland	Miranda
Kogarah Bay	100	Kogarah	Kogarah
Loftus	100	Sutherland	Heathcote
Lucas Heights	100	Sutherland	Menai
Menai	100	Sutherland	Menai
Panania	100	Bankstown	East Hills
Picnic Point	100	Bankstown	East Hills
Revesby Heights	100	Bankstown	East Hills
Sylvania	100	Sutherland	Miranda
Sylvania Waters	100	Sutherland	Cronulla
Taren Point	100	Sutherland	Cronulla
Woronora	100	Sutherland	Menai
Woronora Heights	100	Sutherland	Heathcote
Yarrawarrah	100	Sutherland	Heathcote

Suburb	% in CR 10	Contract Region 10 LGA	Contract Region 10 Electorate
East Hills	>95%	Bankstown	East Hills
Engadine	>95%	Sutherland	Heathcote
Grays Point	>95%	Sutherland	Miranda
Oyster Bay	>95%	Sutherland	Miranda
Padstow Heights	>95%	Bankstown	Georges River
Sutherland	>95%	Sutherland	Heathcote
Illawong	>95%	Sutherland	Menai
Blakehurst	>90%	Kogarah	Kogarah
Waterfall	>90%	Sutherland	Heathcote
Yowie Bay	>80%	Sutherland	Miranda
Revesby	>80%	Bankstown	East Hills
Miranda	>70%	Sutherland	Miranda
Padstow	>70%	Bankstown	East Hills
Hurstville	>60%	Hurstville	Kogarah/Georges River
Bexley	>60%	Kogarah	Kogarah
Beverley Park	>50%	Kogarah	Kogarah
South Hurstville	>40%	Hurstville	Kogarah
Bankstown	>30%	Bankstown	East Hills
Kingsgrove	>30%	Rockdale	Kogarah/Georges River
Kogarah	>20%	Kogarah	Kogarah
Beverly Hills	>10%	Hurstville	Georges River
Milperra	>10%	Bankstown	East Hills
Kyle Bay	>10%	Kogarah	Kogarah
Rockdale	>10%	Rockdale	Rockdale
Condell Park	<10%	Bankstown	East Hills
Caringbah	<10%	Sutherland	Cronulla
Royal National Park	<10%	Sutherland	Heathcote

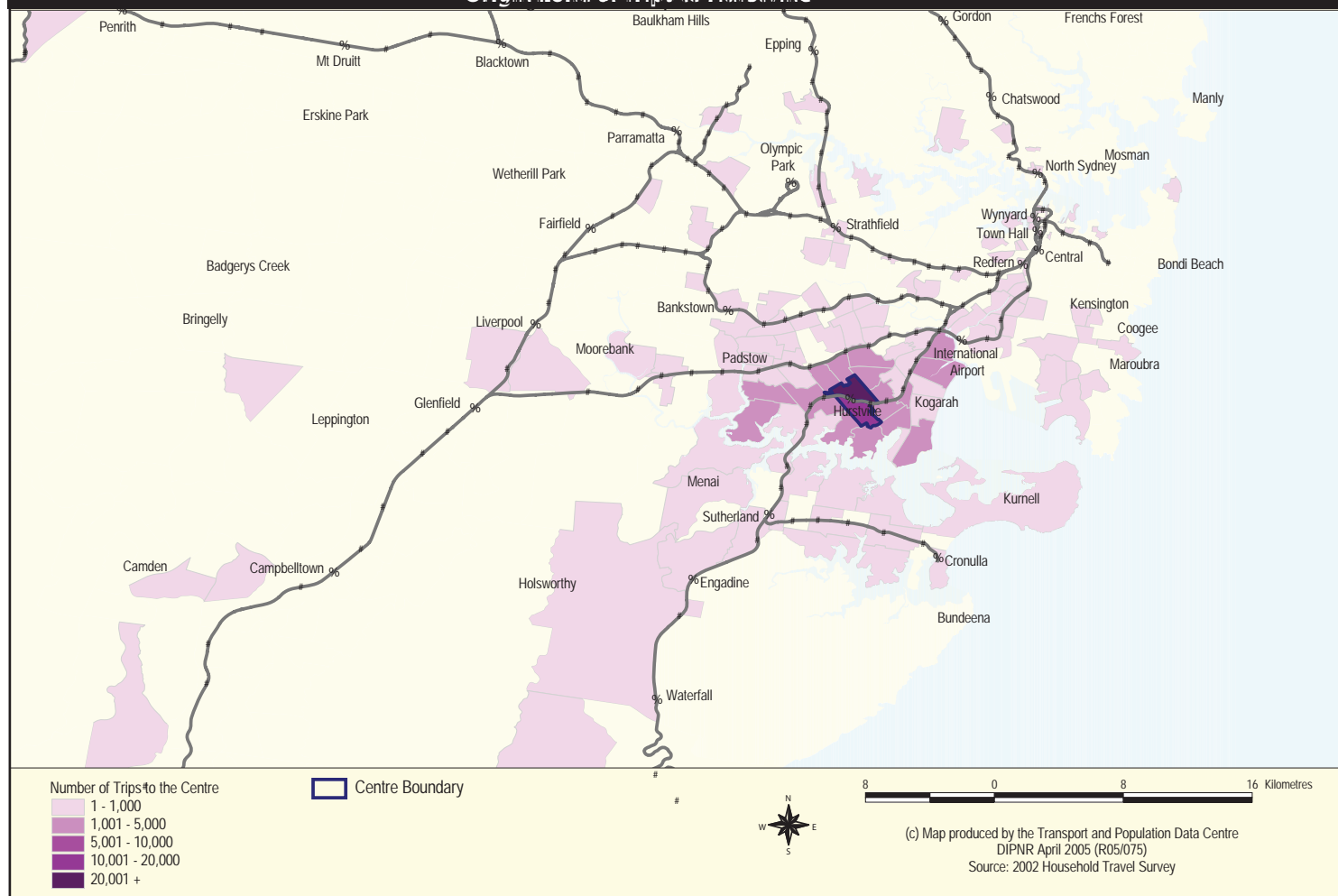
Origin Zone of Trips to Bankstown



Origin Zone of Trips to Miranda



Origin Zone of Trips to Hurstville



Centres

Centre	Major Tenants	Major Tenants m ²	No of Specialties	Specialties m ²	Total Retail m ²	Other Tenants	Other Tenants m ²	Office Tenants m ²	Total Centre m ²	Open Car Bays	Enclosed Car Bays	Total Car	Pedestrian pa
Westfield Miranda	Myer, DJs, Target, Big W, Woolworths, Lincraft, Franklins, Toys R Us, Rebel Sport, Aldi	66,105	343	36,075	102,180	Greater Union, Storerooms, Softplay	6,965	2,383	111,528	1,950	2,550	4,500	13,400,000
Centro Bankstown	DJs, Kmart, Target, Woolworths, Franklins	33,590	254	32,777	66,367		0	130	66,497	1,755	1,208	2,963	14,000,000
Westfield Hurstville	Myer, Kmart, Target, Coles, Toys R Us, Dan Murphy, Aldi, Food for Less	37,485	239	21,607	59,092	Greater Union, Storerooms, Car Wash	5,730	27	64,849	590	2,320	2,910	15,000,000
Southgate, Sylvania	Kmart, Coles, Woolworths	13,943	60	4,701	18,644	Bowling Alley, Library	2,465	0	21,109	789	270	1,059	3,600,000
Menai Marketplace	Big W, Woolworths	10,865	55	4,928	15,793		0	890	16,683	870	0	870	4,444,430
Engadine Court Shopping Centre	Franklins	2,423	28	2,449	4,872		0	0	4,872	0	151	151	1,140,000
Illawong Village Shopping Centre	Coles	1,800	42	2,947	4,747	Community Centre, Medical Centre	550	640	5,937	200	0	200	n/a
Parkside Plaza, Miranda	Coles	3,113	13	1,493	4,606		0	0	4,606	183	16	199	n/a
Kareela Shopping Centre	Coles	3,000	16	1,200	4,200		0	0	4,200	154	0	154	1,200,000
South Terrace Plaza, Bankstown	Franklins	2,200	14	1,330	3,530		0	0	3,530	25	160	185	n/a
Sylvania Waters Shopping Centre		0	19	587	587	Restaurant, Fish&Chips	254	0	841	22	0	22	n/a

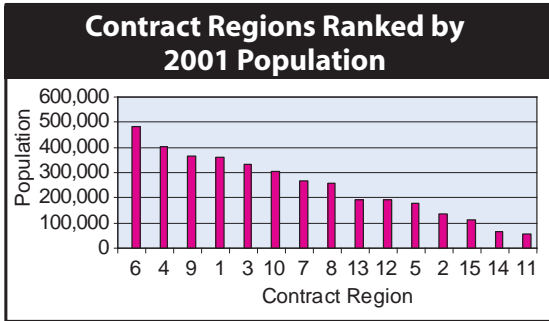
n/a - not available

Source: Property Council of Australia 2004 (Does not include strip shopping precincts.)

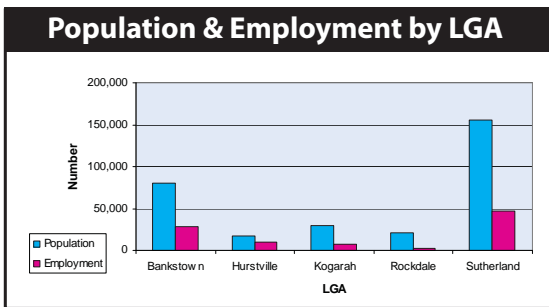
Demographics

Population

In 2001, the population of Contract Region 10 was approximately 300 000. Population in this part of Sydney is forecast to rise to 360 000 by 2031, reflecting an annual growth rate of 0.6%, which is around half of the rate for Sydney as a whole (0.9%). This region is ranked at number 6 out of the 15 Sydney metropolitan bus contract regions in terms of population size.



Region 10 encompasses (by population):
 73% of the Sutherland Shire LGA
 57% of Kogarah,
 47% of Bankstown,
 23% of Rockdale and
 23% of the Hurstville LGA.



Population Profile

78% of Contract Region 10's population is in the Sutherland Shire and Bankstown LGAs.

Language Other Than English (LOTE)

31% of the Region's population speak a language other than English at home.

The most common languages other than English spoken at home in Contract Region 10 are Chinese languages, Greek, Arabic, Macedonian, Italian, Vietnamese, Spanish, Croatian and Tagalog. However, most people speak either English only, or speak English well or very well.

This broadly reflects the most common languages in the Sydney region, which are English, Chinese languages, Arabic, Greek, Italian, Vietnamese, Spanish and Filipino.

Language Spoken at Home

Language	%
English	69
Chinese Languages	6
Greek	4
Arabic	4
Macedonian	2
Italian	2
Vietnamese	1
Spanish	1
Croatian	1
Tagalog	1
All other languages	9
Total	100

Age

22% of the population is aged 5-19, while 17% is aged 60 and over.

Population by Age

Age Group	% by Age Group	% Grouped by Age Group
Aged 0-4	6.7%	6.7%
Aged 5-9	6.8%	20.8%
Aged 10-14	6.9%	
Aged 15-19	7.0%	
Aged 20-24	6.7%	55.8%
Aged 25-29	7.2%	
Aged 30-34	7.4%	
Aged 35-39	7.9%	
Aged 40-44	7.7%	
Aged 45-49	7.1%	
Aged 50-54	6.7%	
Aged 55-59	5.2%	
Aged 60-64	4.0%	16.7%
Aged 65-69	3.4%	
Aged 70-74	3.3%	
Aged 75-79	2.8%	
Aged 80-84	1.8%	
Aged 85-89	1.0%	
Aged 90-94	0.4%	
Aged 95-99	0.1%	
Aged 100+	0.0%	
Total	100.0%	100.0%

Disadvantage

In terms of disadvantage, the index of Relative Socio-Economic Disadvantage shows that Bankstown is the most disadvantaged LGA in Contract Region 10, and is rated 7th of all Sydney LGAs, followed by Rockdale (11th), Hurstville (18th), Kogarah (24th), and Sutherland, which is rated 30th of 44.

Disability

Accurate statistics on the level of disabilities in the community are difficult to obtain. Based on about 9% of the population being in receipt of either an Age or Disability pension, there may be 30 000 people in this category. However, based on the ABS figure for disability in the community (20%), there may be 61 000 people in Contract Region 10 who identify as having some form of disability, reflecting the ageing of the overall population.

Employment

In 2001, based on Labour Force Statistics, employment in Contract Region 10 was 94 154. Over the 2001-2031 timeframe, employment is predicted to rise by an annual rate of 0.3%, to 101 512, ranking it ninth among the 15 contract regions in terms of employment.

Of Region 10's total employment:

- 50% (46 806) is in the Sutherland LGA.
- 30% (28 122) is in the Bankstown LGA
- 10% (9 827) is in the Hurstville LGA
- 7% (6 909) is in the Kogarah LGA
- 3% (2 490) is in the Rockdale LGA.

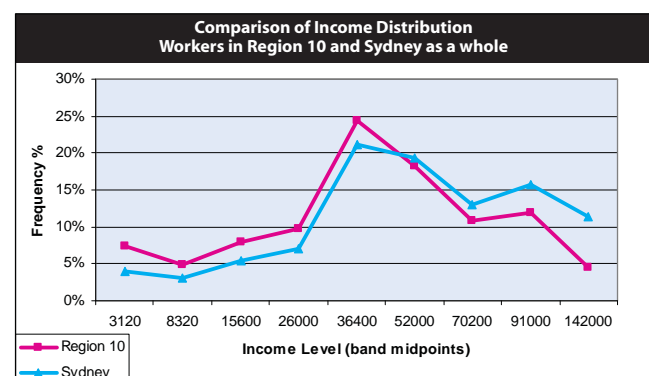
Workforce

Based on 2001 JTW data, the estimated resident workforce in Contract Region 10 is 136 147. This compares with employment available in the Region, which is 94 154.

The most common employment of the Region 10 resident workforce is the Services industry (44%), followed by Retail (22%) and Office (19%).

Household Incomes

The average household income (including multi-employee households) for employees in Contract Region 10 is \$47,742. A comparison with household incomes of Sydney as a whole shows that Contract Region 10 has a higher proportion of household incomes in the medium band, but a lower proportion in highest income bands.



LGA Profiles

Sutherland Shire

The vast majority of Sutherland Shire's population (78.6%) is Australian born. Other languages spoken include Chinese languages and Arabic, but the vast majority of overseas-born speak English only or 'well or very well'.

Bankstown LGA

Bankstown has a diverse population, with close to half from a non-English speaking background (NESB) - they speak a language other than English at home.

Bankstown's people were born in more than 32 countries, and speak more than 30 languages as well as English. However, most are very competent in English, with only 23% of those born overseas claiming to speak English not well or not at all.

Most NESB people have lived in Australia for more than 10 years, and speak Australian English. Most common five languages spoken at home are English, Arabic, Vietnamese, Chinese languages, and Greek. There is a high number of families with children.

In 2001, 23% were aged 55 and over. Bankstown also has significant numbers of children and young people with 31 217 children aged between 0 and 12 (18.8% of the total, which is slightly higher than the SSD figure of 17.3%). The suburbs in Bankstown City with the highest numbers of 0-12 year olds are Bankstown, Punchbowl and Greenacre. There were 29 809 young people aged between 12 and 24 on Census night.

Bankstown is predominantly a family area and has a greater share of couple families with children than the Sydney area as a whole (41% compared with 37.4%). The average household size on Census night was 2.95 people.

The major religions are Catholicism, Islam, and Buddhism, with Hinduism and Sikhism as the emerging religions. The proportion of Christians is consistent with the population of Sydney as a whole, while the proportion of Muslims in Bankstown is significantly higher (11.9% compared with 3.4% across Sydney).

Kogarah LGA

Kogarah is a culturally diverse community, with over 30% of the population born outside Australia, in some 130 different countries. In 2001, China has replaced the United Kingdom as the largest country of birth for migrants living in Kogarah.

Over 35% of Kogarah's residents speak a language other than English at home. After English, the most common languages are Greek, Cantonese and Mandarin, Arabic, Italian and Macedonian. The number of people who speak Mandarin has dramatically increased, from 741 people in 1996 rising to 1,987 people in 2001.

Of the 17 000 people born overseas, one-quarter speak English only, while over half indicated that they speak English 'well or very well'; 17% speak English 'not well or not at all'.

Kogarah has a large aged population, and this has been so for many years. However, while the aged population is becoming older, there has been a significant increase in the number of young people in Kogarah; the number of people aged less than 18 years there has increased continuously since 1991.

Rockdale LGA

In Rockdale City in 2001, almost 30 000 Rockdale residents were born in a non-English speaking country, and more than 42 000 speak a language other than English at home.

Hurstville LGA

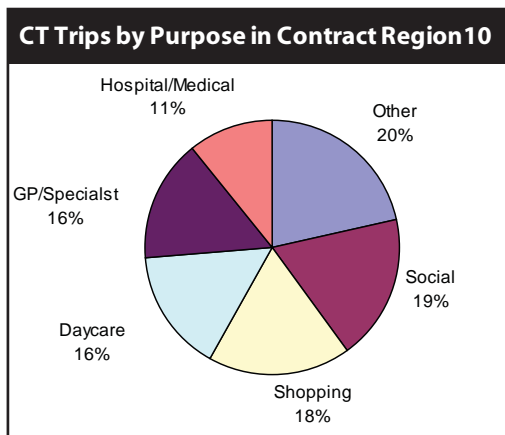
56% of Hurstville's population speak only English. The most common other languages spoken at home are Chinese languages, then Greek, Macedonian and Italian. However, more than half of those born overseas have been here for over 10 years, and speak English well or very well.

Community Transport

Community Transport within Region 10 is provided by four groups:

- St George Community Transport
- Sutherland Shire Community Transport (individual and bus transport)
- Bankstown Community Transport
- Bankstown Individual Transport

The Ministry of Transport estimates that 22 802 trips originate in Contract Region 10.



Annual Trips originating in each Contract Region 2004

Bus Contract Region	Community Transport Trips*
Region 1	22,918
Region 2	6,878
Region 3	8,568
Region 4	12,792
Region 5	19,704
Region 6	23,054
Region 7	26,037
Region 8	13,295
Region 9	19,481
Region 10	22,802
Region 11	10,026
Region 12	7,818
Region 13	15,413
Region 14	6,948
Region 15	7,295
Total	223,029

* Multiply by 2 to calculate the total number of one-way trips including originating trips and return journeys.

Source: Ministry of Transport 2005

The main trip purposes for community transport trips were social and shopping.

The main destinations for each Community Transport Service is as follows:

Service	Main destinations
Bankstown	Bass Hill Shopping Plaza, Liverpool Hospital and medical centres, Westmead Hospital and medical centres, Bankstown Hospital and RPA Camperdown.
Bankstown IT	All within Bankstown LGA mainly nursing homes, day care centres and occasionally the RSL
St George	St George Hospital and specialists, Sutherland Hospital, Peakhurst Community Health Centre, Canterbury Hospital, Bankstown Hospital, Calvary hospital, Liverpool Hospital, RPA, Prince of Wales Hospital, Westfield Hurstville, RSL Clubs
Sutherland	St George Hospital, Sutherland Hospital, Urunga Pde & Gibb St Miranda (doctors & specialists), City - Macquarie Street, Other out of area - Prince of Wales Hospital, Concord Hospital, Miranda Fair.

Transport

Level of car ownership

95% of resident workforce households in Contract Region 10 in 2001 had at least one vehicle, while 68% have two or more vehicles.

Current Bus Operations

The majority of bus services in Region 10 are provided by Connex (see the table below for a description of routes and frequencies). In addition, Connex operates an extensive network of school services.

State Transit also operates two route services, Routes 477 and 478, from Rockdale to Miranda via Taren Point and an occasional service, Route 474 from Kogarah to Miranda.

Strategic Bus Corridors

There are five strategic corridors in Contract Region 10:

Corridor 21	Miranda - City
Corridor 22	Heathcote - Miranda
Corridor 23	Bankstown - Miranda
Corridor 24	Miranda - Hurstville
Corridor 30	Hurstville - Bondi.

Connex Bus Routes: Description and Frequency

Route	Weekday				Saturday		Sunday	
	AM Peak	Off-Peak	PM Peak	Evening	Daytime	Evening	Daytime	Evening
452 Beverly Hills - Hurstville - Rockdale	20	30	20	30	30	NS	60	NS
453 Hurstville - Carlton - Rockdale	15	120	15	NS	120	NS	NS	NS
455 Kingsgrove - Hurstville - Rockdale Plaza	20-30	30-40	20-30	NS	30-40	NS	70	NS
922 East Hills - Bankstown	30	30	30	60	60	NS	60	NS
923 Panania - Revesby - Bankstown	30	30	30	60	30-60	NS	60	NS
924 East Hills - Revesby - Bankstown	60	60	60	NS	120	NS	NS	NS
925 East Hills - Milperra - Bankstown	60	120	60	NS	NS	NS	NS	NS
926 Revesby Heights - Revesby - Bankstown	60	60	60	NS	60	NS	(a)	NS
927 One Tree Point - Padstow - Bankstown	30	30	30	60	60	NS	60	NS
947 Hurstville - Ramsgate - Kogarah	20	40	20	60	40	NS	60	NS
948 Bankstown - Hurstville	20-30	30	20-30	60	30	NS	60	NS
958 Hurstville - Carss Park - Kogarah	30	30	30	60	60	NS	NS	NS
959 Bald Face - Hurstville	30	(b)	30	(b)	(b)	NS	NS	NS
960 Barden Ridge - Sutherland - Miranda	30	60	30	60 (c)	60	60 (c)	120	NS
962 Bankstown - Padstow - Sutherland - Miranda	15-30	30	15-30	60 (c)	60	60 (c)	60	NS
963 Bankstown - Padstow - Sutherland	30	120	30	NS	3 trips	NS	NS	NS
964 Sutherland - Bonnet Bay	15-30	60	30	NS	60	NS	NS	NS
965 Sutherland - Woronora	30	60	30	NS	60	NS	NS	NS
966 Jannali - Como	3 trips	60	2 trips	NS	NS	NS	NS	NS
967 Jannali - Oyster Bay	15-20	60	15	30	60	NS	60	NS
968 Jannali - Kareela - Miranda	30	60	30	30	60	NS	120	NS
970 Miranda - Sylvania - Hurstville	20	30	30	30	20-40	60	120	NS
971 Miranda - Hurstville	20	30	30	30	60	NS	120	NS
972 Kangaroo Point - Hurstville	4 trips	NS	60	NS	NS	NS	NS	NS
973 Miranda - Gymea - Yowie Bay	3 trips	60	30	NS	60	NS	120	NS
974 Miranda - Gymea Bay	15	60	30	60	60	NS	120	NS
975 Sutherland - Grays Point - Miranda	30	60	30	60	60	NS	120	NS
976 Miranda - Parraweena Road	NS	2 trips	NS	NS	NS	NS	NS	NS
991 Engadine - Yarrawarrah - Sutherland	30	60	30	NS	60	NS	NS	NS
992 Engadine - Kingswood Road	30	60	15-30	30	60	NS	60	NS
993 Engadine - Woronora Heights	15-30	60	15	30	60	NS	60	NS
996 Engadine - Heathcote	60	60	60	NS	3 trips	NS	NS	NS
997 Engadine - Heathcote - Waterfall	60	120	60	NS	2 trips	NS	NS	NS

(a) Selected 923 trips via Revesby Heights (b) Route 971 trips divert via Bald Face (c) Late night services on Friday/Sat via 962 NS - no service
Weekdays - am peak 6am to 9am, off peak 9am - 4pm, pm peak 4pm - 6.30pm, Evening after 6.30pm.
Saturdays & Sundays - Daytime 8am - 6pm, Evening after 6pm

Rail

There are 22 rail stations in Region 10. They are located on three CityRail Suburban lines (Bankstown, Eastern Suburbs/Illawarra and East Hills) and one Intercity line (South Coast). Hurstville, Sutherland and Waterfall are served by both the Eastern Suburbs/Illawarra line and the South Coast line.

The relative ranking of station usage is illustrated by CityRail's estimate of weekday station entry and exit counts.

2004 Weekday Station Entry and Exits

Station	Ranking	Passenger Counts
Bankstown Line		
Bankstown	29	7,850
Eastern Suburbs/Illawarra Line		
Hurstville	14	13,330
Kogarah	17	10,330
Rockdale	24	8,510
Sutherland	31	7,290
Miranda	67	3,200
Jannali	72	3,000
Gymea	109	1,780
Allawah	119	1,600
Carlton	136	1,310
Kirrawee	138	1,240
Como	154	950

source: CityRail 2004

Station	Ranking	Passenger Counts
South Coast Line		
Engadine	116	1,690
Heathcote	147	1,070
Loftus	156	940
Waterfall	211	270
East Hills Line		
Padstow	51	4,150
Kingsgrove	80	2,580
Revesby	105	1,840
Panania	122	1,560
Beverly Hills	123	1,530
East Hills	128	1,450

Commuter market

Resident Workforce

To get to work, most (56%) resident workers drive, and another 18% take the train.

Analysis of the travel mode (2001) for the commuter market in relation to household vehicle ownership shows that, in households with two or more vehicles, car driver is the most common mode used, and this is more than three times more likely to occur than where there is only one vehicle in the household. Households with two or more vehicles are nearly 50% more likely to have car driver as their mode, than HH with 1 vehicle. Car ownership levels do not appear to influence the small numbers travelling by bus.

Car Ownership

The majority of households (37%) have 1 vehicle. A further 34% have two vehicles, and 13% have 3 or more. Only 10% of households have no vehicle.

Journey to Work - residents of Contract Region 10

Mode	No vehicle	1 vehicle	2 or more vehicles	Other	Grand Total	%
Train	2,278	9,865	11,215	714	24,072	18
Bus	194	517	538	54	1,303	1
Car Driver	412	15,681	58,901	1292	76,286	56
Car Passenger	259	2,552	4,107	187	7,105	5
Other	723	2,803	5,299	413	9,238	7
Not Travel	490	4,488	12,761	356	18,095	12
Total	4,356	35,906	92,821	3,016	136,099	
%	3	26	68	2	100	

Car Ownership

No. of vehicles	Number	%
No vehicle	10,237	10%
1 vehicle	36,548	37%
2 vehicles	33,757	34%
3 or more vehicles	13,433	13%
Total Dwellings	99,987	100%

Industry Type

In Contract Region 10, commuters reach the following industry types by the modes shown:

Journey to Work - Employees working in Contract Region 10

Industry	Train	Bus	Car Driver	Car Passenger	Other	Not Travel	Grand Total	%
Manufacturing	581	159	7,737	896	684	1,021	11,078	14%
Office	1,304	270	9,691	810	852	2,785	15,712	19%
Retail	1,093	458	8,949	1,868	1,361	3,958	17,687	22%
Services	1,748	506	22,198	1,904	2,746	6,360	35,462	44%
Non-Classified	10	21	127	18	36	54	266	0.3%
Not Stated	41	13	235	34	102	91	516	0.6%
Grand Total	4,777	1,427	48,937	5,530	5,781	14,269	80,721	100%

The largest numbers of those driving a car are in the services industries (including health and community services (5 598), property and business services (5 152) and education (4 956), followed by retail trade (8 949) and manufacturing (7 737).

Self containment

The self-containment of the Resident Workforce within Contract Region 10 is calculated at 30%. (This is based on the maximum proportion of the resident workforce who could work within the region, and the proportion that works locally).

The proportion of self containment for each mode for trips originating in Contract Region 10 is calculated below.

Resident Trips Originating in Contract Region 10

Mode	Number	Proportion self contained by mode
Train	24,083	6%
Bus	1,328	46%
Car Driver	76,097	29%
Car Passenger	7,207	39%
Other	9,147	43%
Not travel	18,285	50%
Grand Total	136,147	30%

Commuting to the CBDs

11% of the Sydney CBD's workforce, and 1% of Parramatta's workforce comes from Contract Region 10. To travel to the Sydney CBD from Region 10, 83% use the train, 1% go by bus, 13% drive and 2% arrive as car passengers.

Commuting to other centres

12% of trips from Contract Region 10 are to other centres within the Region (26 446 out of a total of 216 660).

Of these, the greatest number of trips are to Hurstville (16%), Kogarah (12%), Miranda (10%) and Menai/Barden Ridge, Engadine and Bankstown (9%).

Travel to centres within Region 10

Centre	No of trips	%
Hurstville	4344	16%
Kogarah	3209	12%
Miranda	2682	10%
Menai/Barden Ridge	2398	9%
Engadine	2357	9%
Bankstown	2277	9%
Sutherland	1740	7%
Padstow	1689	6%
Jannali	1374	5%
Rockdale	1021	4%
Revesby	937	4%
Bexley	763	3%
Heathcote	642	2%
Blakehurst	486	2%
Lucas Heights	340	1%
East Hills	187	1%
Total	26446	100%

Journey To Work originating in Region 10

There are 216 660 weekday origins and destinations in Contract Region 10.

The most common modes of travel are:

Car as driver	58%
Train	13%
Car as passenger	6%
Bus	1%.

The most common mode for commutes of travel originating in Contract Region 10 are:

Car as driver	65%
Train	20%
Car as passenger	6%
Bus	1%.

For JTW trips within Contract Region 10: (ie self contained)

72% travel by car as driver
9% travel as car as passenger
5% travel by train
2% travel by bus.

The largest single destination for commute trips from Region 10 is:

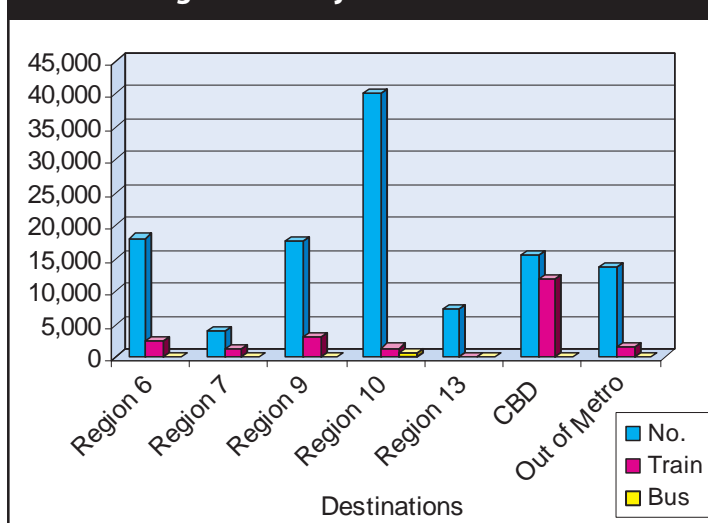
Region 10 - 30%	CBD - 11%
Region 6 - 13%	Out of metro - 10%
Region 9 - 13%	Region 13 - 5%

Proportionally, almost 30% of commutes originating in Contract Region 10 travel within the region. Another 13% commute to Region 9 (Eastern Suburbs), 13% to Region 6 (Inner West), 11% to the CBD and 10% to out of metro.

Of train travel from Region 10, the highest number of trips are to the following destinations:

CBD	49%
Region 9 - Eastern Suburbs	13%
Region 6 - Inner West	10%
Out of Metro	7%
Region 10 - Southern	6%
Region 7 - Inner North West	5%

Contract Region 10 - Major Destinations & PT Modes



Non-Resident Workforce

For the people who work within Contract Region 10 most households (69%) have 2 or more vehicles. Their household vehicle ownership is as follows:

Journey to Work - Workers in Contract Region 10

Mode	No vehicle	1 vehicle	2 or more vehicles	Other	Grand Total	%
Train	954	1,932	1,643	232	4,761	6
Bus	239	550	558	50	1,397	2
Car Driver	305	10,585	37,005	1,003	48,898	61
Car Passenger	210	1,923	3,210	164	5,507	7
Other	575	1,814	3,080	310	5,779	7
Not Travel	380	3,339	9,882	556	14,157	18
Total	2,663	20,143	55,378	2,315	80,499	
%	3	25	69	3	100	

JTW with destination in Region 10

For JTW with a destination in Contract Region 10, the most common mode is car as driver (61%), followed by car as passenger (7%), train (6%) and bus (2%).

The highest proportion of commuters with a destination in the Region come from within the Region (49.9%), then from Region 5 (Punchbowl - 8.75%), Region 11 (Cronulla - 8.26%), Region 6 (Inner West - 7.41%) and Region 13 (Inner South West - 5.81%).

Information and coverage

The area covered by the contract region, while following geographical features and some local government boundaries, is largely for administrative purposes and is likely to cut across travel patterns and some communities.

Population, employment and travel information is coded to units (travel zones), some of which straddle the contract regions' boundaries. Other information might be coded to even larger units such as local government areas, which cut across boundaries. There will be some residents and employees of adjoining contract regions that will be affected by decisions relating to Contract Region 10, because they live or work or go to school close to, but outside, the boundary.

Even though information is from different sources, which are not necessarily completely consistent, they do provide useful background information to generally assist the service planning process. However, care must be taken in the use of the information and readers are referred to the source of particular information of interest for further explanation of collection methods and other possible limitations.

Disclaimer

While all care is taken in producing and publishing this work, no responsibility is taken or warranty made with respect to the accuracy of any information, data or representation. The Ministry of Transport expressly disclaim all liability in respect of anything done or omitted to be done and the consequences upon the reliance of the contents of this information.

Sources of Data

The main sources of data in this publication are: Australian Bureau of Statistics: 2001 Census of Population and Housing for New South Wales, Monthly Labour Force Survey; NSW Transport Data Centre: Household Travel Survey; CityRail; Sutherland Shire Council; Bankstown City Council; Hurstville City Council; Kogarah City Council; Rockdale City Council; Department of Education and Training: NSW/ACT Shopping Centre Directory 2004, Property Council of Australia; Choosing a School for Your Child - NSW, Universal Magazines, No 20. 2004-2005 and Ministry of Transport.

Appendix 1: Aged Care facilities - Low Care Accommodation

BAYSIDE RETIREMENT VILLAGE

Address: 40 Bunyala Street, Blakehurst

Phone: (02) 9546-2897.

BENEVOLENT SOCIETY OF NSW - BEXLEY CENTRE

Address: 28 Harrow Road, Bexley

Phone: (02) 9567-1219

BIG SISTER MOVEMENT HOSTEL FOR THE AGED

Address: 2C Karimbla Road, Miranda

Phone: (02) 9524-0236

BEAUTY POINT RETIREMENT RESORT

33 Bernard Road, Padstow Heights

Phone: (02) 9773 7119

BEECHWORTH APARTMENTS

Address: 6/13 Kennedy Crescent,

Bonnet Bay

Phone: (02) 9586-1322.

BLAKEHURST AGED CARE CENTRE

Address: 20-24 Cheddar Street, Blakehurst

Phone: (02) 9546-2159.

CHRISTIAN ENTERPRISES LTD

Address: U22/440 Port Hacking Rd,

Caringbah

Phone: (02) 9526 6288

COLIN MCFAYDEN VILLAGE

Address: 47 Woniora Road, Hurstville

Phone: (02) 9546 5311

FRANK VICKERY RETIREMENT VILLAGE

Address: 101 Port Hacking Road, Sylvania

Phone: (02) 9522-6000

JOHN PAUL VILLAGE

Address: 15 The Avenue, Heathcote

Phone: (02) 9520 2444

JULIANA VILLAGE

Address: 58 Miranda Road, Miranda

Phone: (02) 9524-8409

LITHUANIAN VILLAGE

Address: 23 Laurina Ave, Engadine

Phone: (02) 9520-3908

MAYFLOWER RETIREMENT VILLAGE BRUCE SHARP LODGE

Address: 110 Frederick St, Rockdale

Phone: (02) 9567 3641

OUR LADY OF THE WAY RETIREMENT COURT

1-7 Adelaide Pl, Sylvania

OZANAM VILLA (ST VINCENT DE PAUL)

13 Neptune Street, Revesby

Phone: (02) 9771 2196

PERCY MILES VILLA

Address: 227-235 Forest Rd, Kirrawee

Phone: (02) 9545 1773

RESIDENTIAL LIFESTYLE SERVICES

Address: 6/13 Kennedy Crescent,

Bonnet Bay

Phone: (02) 9586-1322

ST BEDE'S HOSTEL

Address: 2 Russell Lane, South Hurstville

Phone: (02) 9547-1055

ST VINCENT DE PAUL BETHLEHEM HOUSE

Address: PO Box 741, Kogarah

Phone: (02) 9588-5824

THE LAURELS

Address: 45 English Street, Kogarah

Phone: (02) 9588-4312

THOMAS HOLT MEMORIAL VILLAGE

Address: 1-25 Acacia Road North,

Sutherland

Phone: (02) 9545-4799

WALTER SKELTON VILLAGE (EVENTIDE HOMES)

967 Henry Lawson Drive, Padstow Heights

Phone: (02) 9773 4646

WARENA CENTRE FOR AGED CARE (INCORPORATING WARENA GARDENS & WARENA VILLAGE)

Address: 15 Bangaroo St, Bangor

Phone: 9541 0366

Appendix 2: Schools

School	Suburb	Type of School	No. of Students
Alfords Point Public	Alfords Point	P	259
Aquinas College	Menai	H	n/a
Bald Face Primary	Blakehurst	P	283
Bangor Public	Bangor	P	633
Bankstown Girls High	Bankstown	H	626
Bankstown Public	Bankstown	P	916
Bankstown Senior College	Bankstown	H	365
Bankstown South Infants	Bankstown	I	61
Bates Drive School	Kirrawee	S	63
Bethany College	Hurstville	H	750
Beverley Hills Girls High	Beverley Hills	H	1000
Beverley Hills Public	Beverley Hills	P	396
Bexley Public	Bexley	P	403
Blakehurst High	Blakehurst	H	995
Blakehurst Public	Blakehurst	P	386
Bonnet Bay Public	Bonnet Bay	P	145
Boys Town	Engadine	S	n/a
Broderick Gillawarna School	Revesby	S	74
Caringbah High	Caringbah	H	899
Carlton Public	Carlton	P	812
Carlton South Primary	Carlton	P	532
Caroline Chisolm Special School	Padstow	S	60
Como Public School	Como	P	55
Como West Public	Como	P	274
Connells Point Public	Connells Point	P	453
Cook School	Loftus	S	5
Danebank Anglican School for Girls	Hurstville	C	900
De La Salle College	Caringbah	H	330
De La Salle College	Revesby Heights	H	330
East Hills Boys Technology High	East Hills	H	597
East Hills Girls Technology High	East Hills	H	957
East Hills Public	Panania	P	142
Endeavour Sports High	Caringbah	H	931
Engadine High	Engadine	H	892
Engadine Public	Engadine	H	314
Engadine West Public	Engadine	P	578
Grays Point Public	Grays Point	P	358
Gymea Bay Public	Gymea	P	804
Gymea North Public	Gymea	P	269
Gymea Technology High	Gymea	P	659
Heathcote East Public	Heathcote	P	166
Heathcote High	Heathcote	H	1003
Heathcote Public	Heathcote	P	302
Holy Family Primary	Menai	P	n/a
Hurstville Boys High	Hurstville	H	605
Hurstville Public	Hurstville	P	1084
Hurstville South Public	Hurstville South	P	419
Illawong Public	Illawong	P	302
Inaburra	Bangor	C	880
James Cook Boys High	Kogarah	H	541
Jannali East Public	Jannali	P	175
Jannali Public	Jannali	P	109
Kareela Public	Kareela	P	349
Kingsgrove High	Kingsgrove	H	1020
Kingsgrove Public	Kingsgrove	P	683
Kirrawee High	Kirrawee	H	1189
Kirrawee Public	Kirrawee	P	313
Kogarah High	Kogarah	H	595
Kogarah Public	Kogarah	P	350
La Salle College	Bankstown	H	n/a
Loftus Public	Loftus	H	348

School	Suburb	Type of School	No. of Students
Lucas Heights Community School	Lucas Heights	C	1117
Marist College Kogarah	Kogarah	H	1050
Marton Public	Engadine	P	396
Mater Dei Primary	Blakehurst	P	n/a
Menai High	Menai	H	1019
Menai Public	Menai	P	344
Milperra Public	Milperra	P	257
Minerva School	Sutherland	S	73
Miranda Public	Miranda	P	2320
Moorefield Girls High	Kogarah	H	735
Mount St Joseph	Milperra	H	980
Our Lady Star of the Sea Primary	Miranda	P	n/a
Oyster Bay Public	Oyster Bay	P	385
Padstow Heights Public	Padstow Heights	P	384
Padstow North Public	Padstow North	P	219
Padstow Park Public	Padstow	P	302
Panania North Public	Panania	P	320
Panania Public	Panania	P	395
Picnic Point High	Panania	H	914
Picnic Point Public	Picnic Point	P	378
Port Hacking High	Miranda	H	1025
Revesby Public	Revesby	P	300
Revesby South Public	Revesby	P	339
Sir Joseph Banks High	Revesby	H	550
Southern Cross Baptist Christian School	Engadine	C	22
St Brendans Primary	Bankstown	P	n/a
St Christophers Primary	Panania	P	n/a
St George Girls High	Kogarah	H	929
St George School	Kogarah	S	48
St John Bosco College	Engadine	H	815
St John Bosco Primary	Engadine	P	n/a
St Josephs Primary	Jannali	P	n/a
St Lukes Primary	Revesby	P	n/a
St Patricks College	Sutherland	H	1083
St Patricks Primary	Sutherland	P	n/a
St Patricks Primary	Kogarah	P	n/a
St Ursula's College	Kingsgrove	H	920
Sutherland North Public	Sutherland	P	177
Sutherland Public	Sutherland	P	209
Sutherland Shire Christian School	Sutherland	C	750
Sydney Technical High	Hurstville	H	923
Sylvania Heights Public	Sylvania Heights	P	510
Sylvania High	Sylvania	H	741
Sylvania Public	Sylvania	P	179
Sylvanvale Special School	Kirrawee	S	n/a
Taren Point Public	Taren Point	P	100
Tharawal Public	Illawong	P	347
The Jannali High School	Jannali	H	855
Tower Street Public	Panania	P	249
Waterfall Public	Waterfall	P	41
Woniara Road School	Hurstville	S	16
Woronora River Public	Woronora	P	142
Yarrawarra Public	Yarrawarra	P	185
Yowie Bay Public	Yowie Bay	P	325

I - Infants P - Primary H - High School
C - Combined K - 12 n/a - Not Available

Source: Public School Data - www.schools.nsw.edu.au accessed June 2005;
Independent Schools Data - *Choosing a School for Your Child* - NSW, 2004-2005, Universal Magazines

