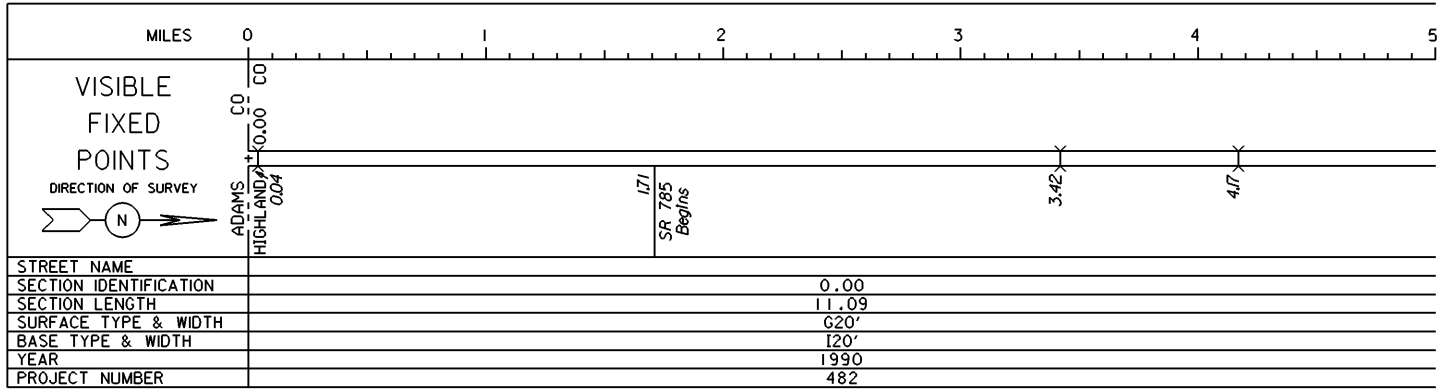


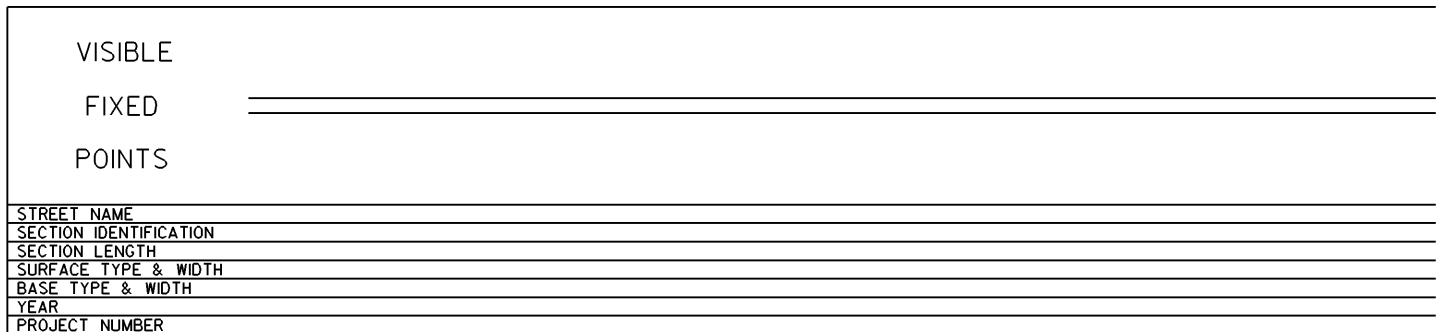
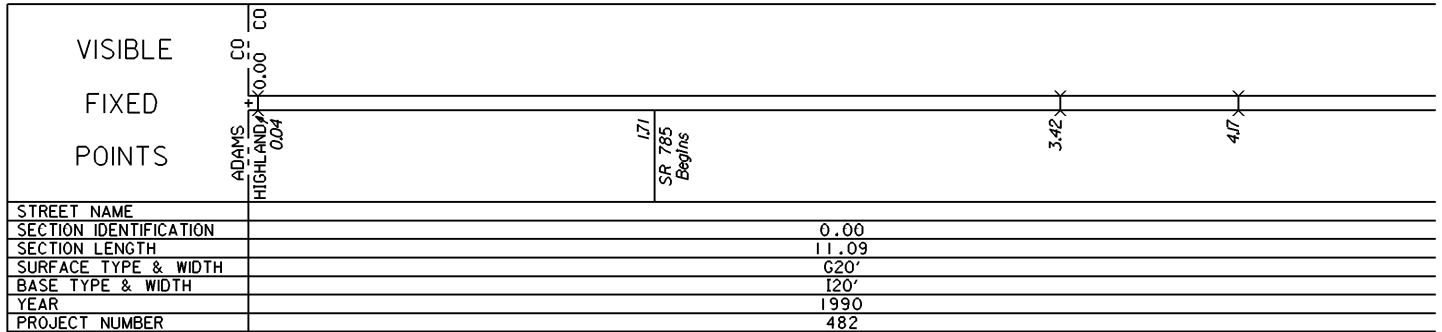
STATE OF OHIO - DEPARTMENT OF TRANSPORTATION

STATE ROUTE SECTIONS ON CONTINUOUS MILEAGE STATIONING

DISTRICT 9
 COUNTY HIGHLAND
 ROUTE SR 247



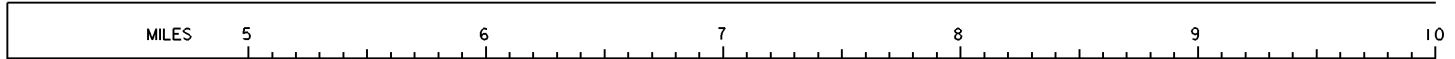
PERPETUATION



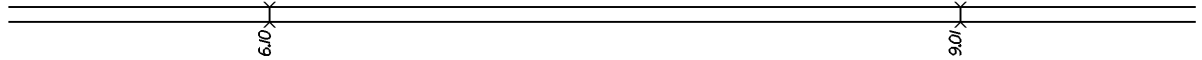
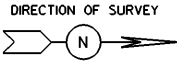
STATE OF OHIO - DEPARTMENT OF TRANSPORTATION

STATE ROUTE SECTIONS ON CONTINUOUS MILEAGE STATIONING

DISTRICT 9
 COUNTY HIGHLAND
 ROUTE SR 247



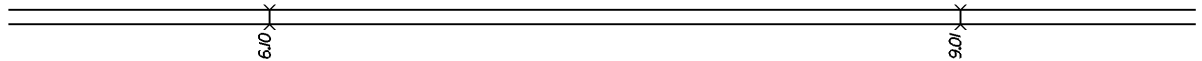
VISIBLE
 FIXED
 POINTS



STREET NAME	
SECTION IDENTIFICATION	0.00
SECTION LENGTH	11.09
SURFACE TYPE & WIDTH	G20'
BASE TYPE & WIDTH	I20'
YEAR	1990
PROJECT NUMBER	482

PERPETUATION 1995 M&R

VISIBLE
 FIXED
 POINTS



STREET NAME	
SECTION IDENTIFICATION	0.00
SECTION LENGTH	11.09
SURFACE TYPE & WIDTH	G20'
BASE TYPE & WIDTH	I20'
YEAR	1990
PROJECT NUMBER	482

2008
 491

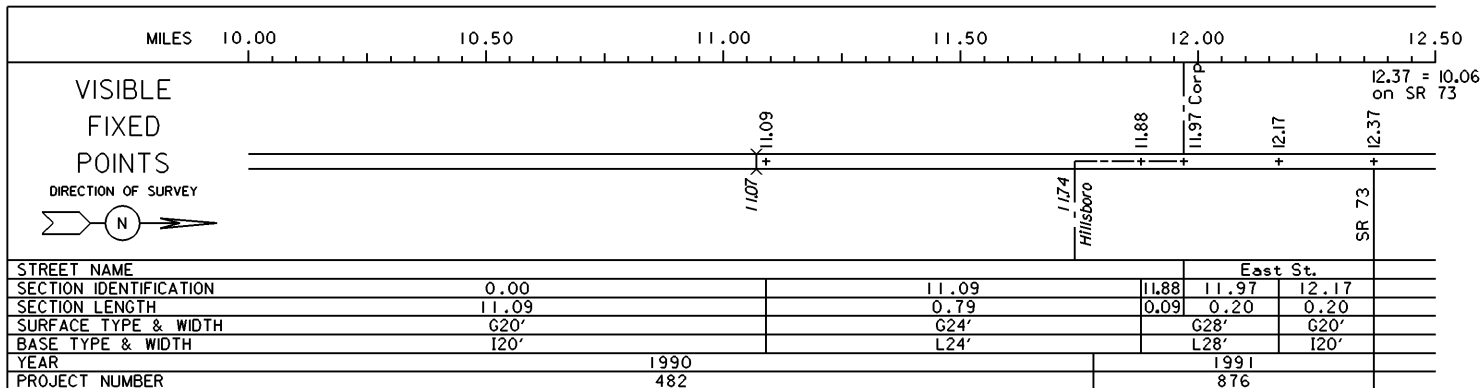
VISIBLE
 FIXED
 POINTS



STREET NAME	
SECTION IDENTIFICATION	
SECTION LENGTH	
SURFACE TYPE & WIDTH	
BASE TYPE & WIDTH	
YEAR	
PROJECT NUMBER	

STATE OF OHIO - DEPARTMENT OF TRANSPORTATION
STATE ROUTE SECTIONS ON CONTINUOUS MILEAGE STATIONING

DISTRICT 9
COUNTY HIGHLAND
ROUTE SR 247



PERPETUATION

