

**2011 PAN-AMERICAN GAMES REGATTA**  
**Puerto Vallarta, Jalisco, México**  
October 13<sup>th</sup>-23<sup>rd</sup>, 2011

**Organizing Authority:**

**GUADALAJARA 2011 Pan-American Games Organizing Committee (COPAG),  
and the Mexican Sailing Federation (FMV), in collaboration with the Pan  
American Sailing Federation (PASAF), and the Vallarta Yacht Club (VYC), as the  
hosting venue.**

## **SAILING INSTRUCTIONS**

### **1 RULES**

1.1 The regatta will be governed by the rules as defined in *The Racing Rules of Sailing*.

The Pan-American Games Regulation, PASO Statute, XVI Pan-American Games Guadalajara 2011 Entries Manual and XVI Pan-American Games Guadalajara 2011 Technical Manual for Sailing are included in the list of documents governing this event.

1.2 No national authority prescriptions will apply.

1.3 Decisions of the International Jury will be final as provided in RRS 70.5.

1.4 The RRS Appendix P, Special Procedures for Rule 42, will apply

1.5 For the Open Multihull, RRS 44.1 and RRS P2.1 are changed so that the Two-Turns Penalty is replaced by the One-Turn Penalty.

1.6 For medal races, ISAF Addendum Q, Umpired Fleet Racing, will apply and takes precedence over any conflicting instructions.

1.7 Class rules will apply except for any class rule dealing with the conditions for organizing and running of Class Championships.

1.8 The Equipment Inspection Regulations will apply

1.9 Coach boats regulation Pan-American Games 2011 will apply

1.10 RRS G3, Chartered or Loaned Boats, will apply

1.11 For the Open Keelboat, the boats shall sail with a crew of four persons on board, with a maximum total crew weight of 320Kg. The boats shall sail with J-24 class-approved mainsail, jib and spinnaker. The boats must compete with the class standard weight of 1270 kg, including the empty hull and the minimum set of equipment: life jackets for all crew members, anchor and respective chain and rope, one mainsail, one jib and one spinnaker plus all spars, lines and fittings. No genoa, engine, gas tank or cushions shall be carried. This changes the J-24 class rules.

1.12 If there is conflict between languages, the language in which the relevant

document was originally written will prevail.

1.13 RRS 63.7 is changed to read: "If there is a conflict between a rule that needs to be resolved before the International Jury can decide a *protest* or request for redress, the Jury shall apply the rule that it believes will provide the fairest result for all boats affected.

## **2 IDENTIFICATION AND ADVERTISING WHILE RACING**

2.1 Each day while racing, the first, second and third boats in series scores at the beginning of the day shall display a yellow, blue and red sticker respectively. The organizing authority will supply the stickers and instructions for their use at the team leaders' meeting.

2.3 Athletes are required to wear bibs provided by the organizing authority. Bibs shall be worn as the outer layer of clothing (over any other item of clothing or equipment). A hole for trapeze/hiking devices may be made.

2.4 Boats and sailboards may be required to display event sponsor advertisement

2.5 A boat's recall number will be her national letters. This changes RRS 30.3

2.6 For the purpose of scoring, only national letters will be used. Sail number are optional. Were sail number are present, they should be in accordance with the Class Rules. This change RRS appendix G1.1.

## **3 CAMERAS AND ELECTRONIC EQUIPMENT**

3.1 Boats may be required to carry cameras, sound equipment or positioning equipment as specified by the organizing authority.

## **4 NOTICES TO COMPETITORS**

4.1 Notices to competitors will be posted on the official notice board located directly in front of the Results Office (OVR), on the eastern side of the Tonina Tower of the Paradise Village resort

## **5 CHANGES TO SAILING INSTRUCTIONS**

5.1 Any change to the sailing instructions will be posted before 10:00 on the day it will take effect, except that any change to the schedule of races will be posted by 20:00 on the day before it will take effect.

## 6 SIGNALS MADE ASHORE

6.1 Signals made ashore for classes assigned to racing areas Bravo and Charley will be displayed at the mast outside the Vallarta Yacht Club clubhouse. When a signal is displayed over an area flag it applies to that area only.

6.2 Signals made ashore for classes assigned to racing area Alpha will be displayed at the mast located at the beach compound in front of the breakwater.

6.3 When flag AP is displayed ashore, '1 minute' is replaced with 'not less than 40 minutes' for racing area Alpha and Bravo, and with 'not less than 60 minutes' for racing area Charley in the race signal AP.

6.4 When flag Y is displayed ashore, rule 40.1 applies at all times while afloat. This changes the Part 4 preamble.

## 7 FORMAT OF RACING

7.1 The regatta will consist of an opening series and a medal race.

7.2 The five boats ranked highest in the opening series will be assigned to compete in the medal race.

7.3 Assignments to the medal race will be based on the ranking available at 0800 on the day of the medal race. The jury may extend the time limit.

## 8 SCHEDULE OF RACES

8.1 Dates of racing:

<b>October</b>	<b>Day</b>	<b>Activity</b>
16	Sun	Practice Race
17	Mon	Races
18	Tue	Races
19	Wed	Races
20	Thu	Spare Day
21	Fri	Races
22	Sat	Races
23	Sun	Medal Races

8.2 Eleven races are scheduled for each event. Of the 11 races, ten are scheduled as opening races and one as a medal race.

8.3 Two races per day are scheduled for each event.

8.4 One extra race per day may be sailed, provided that no class becomes more than one race ahead of schedule and the change is made according to instruction 5.1 .

8.5 The scheduled time of the warning signal for the first race each day is 13:00

8.6 There will be no starting signal after 17:00 hours on Sunday October 23<sup>rd</sup>,  
2011

8.7 To alert boats that a race or sequence of races will begin soon, the orange flag defining the starboard end of the starting line will be displayed, with one sound signal, for at least four minutes before a warning signal is displayed.

8.8 Spare day will be used to try to complete the 6 races.

8.9 Medal Race:

A medal race will be scheduled for each class with 3 or more opening series races completed.

## 9 EVENT FLAGS

9.1 Events and their flags will be as follows:

Event	Class	Flag
Men's Windsurfer	RS:X	'Class ensign on white background
Women's Windsurfer	RS:X	Class ensign on light blue background
Men's One Person Dinghy	Laser	Class ensign on white background
Women's One Person Dinghy	Laser Radial	Class ensign on light blue background
Open One Person Dinghy	Sunfish	Class ensign on white background
Open Two Person Dinghy	Snipe	Class ensign on white background
Open Three Person Dinghy	Lightning	Class ensign on white background
Open Multihull	Hobie 16	Class ensign on white background
Open Keelboat	J-24	Class ensign on white background

## 10 RACING AREAS

Attachment A shows the location of racing areas and the flags used to designate them.

10.2 Classes are assigned to racing areas as follows:

Event	Class	AREA
Men's Windsurfer	RS:X	Area Alpha
Women's Windsurfer	RS:X	
Open Multihull	Hobie 16	
Men's One Person Dinghy	Laser	Area Bravo
Women's One Person Dinghy	Laser Radial	
Open One Person Dinghy	Sunfish	
Open Two Person Dinghy	Snipe	Area Charley
Open Three Person Dinghy	Lightning	
Open Keelboat	J-24	

10.3 Race Committee may reassign an event to any Area, but not later than 3 hours before the scheduled warning signal. However, when flag AP is displayed ashore (see instruction 6.3) the racing area may be changed until 15 minutes before the AP is removed.

10.4 For the medal races, 1, 2 or 3 course areas will be used. Their locations will be posted on the official notice board.

## 11 THE COURSES

11.1 The diagrams in SI Attachment B show the courses illustration, the course signals, the approximate angles between legs, the order in which marks are to be passed, and the side on which each mark is to be left.

11.2 No later than the warning signal, the race committee signal boat will display the course signal and, except for boards, the approximate compass bearing of the first leg.

11.3 Mark 3 is shown as a gate, 3s and 3p, and Mark 4 is shown as a gate, 4s and 4p. One or both gates may be replaced by single marks, Mark 3 and Mark 4 respectively, to be left to port. When there is a gate, boats shall sail between the gate marks from the direction of the previous mark and round either gate mark.

## 12 MARKS

12.1 (a) Marks 1, 1a, 2, 3, 3s, 3p, 4, 4s and 4p will be tetrahedral inflatable buoys. With the exceptions for the J-24 and Hobie 16 classes stated below, the colour of the marks for each course will be as follows:

<b>Racing area</b>	<b>Mark colour</b>
Alpha	yellow
Bravo	orange
Charlie	green

For the J-24 class, Mark 1 will be yellow.

For the Hobie 16 class Mark 1a will be green.

(b) Marks S1, S2 and S3 will be white tetrahedrons.

(c) Offset marks will be white tetrahedrons.

12.2 New marks, as provided in instruction 14.1, will be of the same shape and colour as the original marks.

12.3 The starting marks will be the race committee signal boat at the starboard end and another race committee boat at the port end. Both boats will display orange flags.

12.4 Finishing line marks may be race committee vessels or inflatable marks.

### **13 THE START**

13.1 The starting line will be between staffs displaying orange flags on the starting marks.

13.2 Boats whose warning signal has not been made shall avoid the starting area during the starting sequence for other races.

13.3 A boat starting later than four minutes after her starting signal will be scored Did Not Start without a hearing. This changes rules A4 and A5.

13.4 Boats whose warning signal has not been made shall avoid the starting area. The starting area is defined as a rectangle 100 meters from the starting line and marks in all directions.

### **14 CHANGE OF THE NEXT LEG OF THE COURSE**

14.1 To change the next leg of the course, the race committee will lay a new mark (or move the finishing line) and remove the original mark as soon as practicable. When in a subsequent change a new mark is replaced, it will be replaced by an original mark.

### **15 THE FINISH**

15.1 The finishing line will be between a staff displaying an orange flag on the race committee vessel and an inflatable mark.

## 16 TIME LIMITS AND TARGET TIMES

16.1 Except for medal races, time limits and target times are as follows:

Class	Time Limit	Mark 1 Time Limit	Finish Window	Target Time
RS:X	<b>50</b>	<b>15</b>	<b>15</b>	<b>30</b>
Laser Radial, Laser Standard, Sunfish <b>Snipe</b>	<b>90</b>	<b>30</b>	<b>20</b>	<b>60</b>
<b>Hobie 16</b>	<b>90</b>	<b>30</b>	<b>20</b>	<b>60</b>
<b>J-24, Lightning</b>	<b>120</b>	<b>40</b>	<b>20</b>	<b>75</b>

16.2 Time limits and target times for medal races are as follows:

Class	Time Limit	Mark 1 Time Limit	Finish Window	Target Time
RS:X	<b>50</b>	<b>15</b>	<b>10</b>	<b>20</b>
All other classes	<b>50</b>	<b>30</b>	<b>10</b>	<b>30</b>

16.3 If no boat has passed Mark 1 within the Mark 1 time limit the race will be abandoned. Failure to meet the target time will not be grounds for redress. This changes rule 62.1(a).

16.4 Boats failing to finish within the time stated in the Finish Window after the first boat sails the course and finishes will be scored Did Not Finish. This changes RRS 35, A4 and A5.

## 17 PROTESTS AND REQUESTS FOR REDRESS

17.1 Protest forms are available at the race office, located at the Convention Centre of the Paradise Village resort. Protests and requests for redress or reopening shall be delivered there within the appropriate time limit.

17.2 For each class, the protest time limit is 90 minutes after the last boat has finished the last race of the day.

17.3 Notices will be posted within 30 minutes of the protest time limit to inform competitors of hearings in which they are parties or named as witnesses. Hearings will be held in the protest room, located at the south-eastern corner of the Tonina Tower of the Paradise Village resort, beginning at the time posted. Hearings may be scheduled to begin up to 30 minutes before the end of protest time.

17.4 Notices of protests by the race committee, the EIC or jury will be posted to inform boats under rule 61.1(b).

17.5 A list of boats that have been penalized under Appendix P for breaking RRS 42 will be posted.

17.6 Breaches of instructions 2, 20, 30, Equipment Inspection Regulations and Coach Boats Regulations will not be grounds for a protest by a boat. This changes rule 60.1(a).

17.7 Penalties for breaches of instructions 2, 3, 13.2, 20, 21, 23, 24, 25, 27, 28 and 32, or for breaches of RRS 41, or Class Rules or Equipment Inspection Regulations are at the discretion of the International Jury

17.8 On the last day of the opening series a request for reopening a hearing shall be delivered:

Within the protest time limit if the requesting party was informed of the decision on the previous day;

No later than 30 minutes after the requesting party was informed of the decision on that day.

This changes rule 66.

17.9 On the last day of the opening series a request for redress from a jury decision shall be delivered no later than 30 minutes after the decision was posted. This changes rule 62.2.

## **18 SCORING**

18.1 The Low Point System of RRS Appendix A will apply. RRS B8 is deleted.

18.2 Three races are required to be completed to constitute a regatta

18.3 When fewer than 10 opening series races have been completed, a boat's series score will be the total of her race scores.

18.4 When 10 opening series races have been completed, a boat's series score will be the total of her race scores excluding her worst score. However, the score from the medal race will not be excluded.

18.5 The scoring abbreviation for a discretionary penalty imposed under SI 17.7 will be DPI.

18.6 To request correction of an alleged error in posted race or series results, a boat may complete a scoring enquiry form available at the regatta office.

19 Medal Race:

The boats assigned to compete in the medal race will be ranked highest in the regatta except for a boat disqualified from the medal race under RRS 5 or 69.

19.1 RRS A4.1 is changed so that the points are doubled, and RRS A4.2 is changed so that the scores are based on the number of boats assigned to compete in that race.



19.2 For boats assigned to compete in the medal race, ties in the regatta score are broken by the medal race score. This changes RRS A8. For boats with the same points score in the medal race, ties in the regatta score are broken applying RRS A8 to the opening series scores.

19.3 A boat assigned to compete in the medal race shall make a genuine effort to start, sail the course and finish. The penalty for a breach of this instruction will ranking the boat fifth in the regatta. If there are two such boats, they will be fourth and fifth, in order of their opening-series ranks, and so on. This changes RRS A2.

## 20 SAFETY REGULATIONS

20.1 Check-In: All boats shall check-in on arrival at the racing area by closely passing the race committee signal boat on port tack. Boats not leaving the harbour for any of the day's racing shall so inform the race office.

20.2 A boat that retires from a race shall notify the race committee as soon as possible. The boat shall complete a retirement declaration form at the protest desk on return ashore.

## 21 EQUIPMENT AND MEASUREMENT

21.1 Boats are required to comply with the 2011 PAN\_AMERICAN Games Equipment Inspection Regulations

21.2 After boats, spars and sails have passed measurement and been marked accordingly with stickers or stamps, they shall not be removed from the venue, including the racing areas and the waters leading to them, without prior written permission of the organizing authority.

21.3 Replacements Ashore: Requests for substitution of damaged or lost equipment shall be made to the measurement coordinator for consideration by the measurement committee. Permission will be given only when the committee is satisfied that the item of equipment is severely damaged, not deliberately mistreated, and cannot be repaired satisfactorily. A request shall be made at the first reasonable opportunity on a form available at the protest desk.

21.4 Replacements Afloat: When an item of equipment is damaged or lost shortly before a race and is replaced, the boat shall notify the race committee before the warning signal. As soon as practicable after coming ashore, the boat shall comply with instruction 21.2 and the replaced item shall be presented to the measurement coordinator. If the measurement committee decides that the item could have been used in the race or had been purposely damaged by anyone associated with the boat, the measurement committee may request action under rule 69.1(a).

21.5 A boat or equipment may be inspected at any time for compliance with the class rules, measurement regulations and sailing instructions. When instructed to do so by a measurer on the water, a boat shall proceed immediately to a designated area for inspection.

## 22 OFFICIAL BOATS

22.1 Official boats will be marked as follows:

Flag	Category
black letter "J" on white background	Jury and umpire
white letters "CR" on blue background	Race committee
black letters "PRO" on white background	Race officers' chairman
black letter "M" on white background	Measurement
black letters "VIP" on white background	VIP
red letters "SOS" on white background	Rescue
red cross on white background	First aid
white letter "P" on green background	Press, photo
black letters "TD" on white background	Technical delegate

## 23 SUPPORT BOATS

Team leaders, coaches and other support personnel are required to comply with the 2011 PAN\_AMERICAN Games Sailing Competition Coach Boat Regulations.

## 24 TRASH DISPOSAL

Boats shall not put trash in the water. Trash may be placed aboard support and race committee boats.

## 25 BERTHING

During the event, boats shall be kept in their assigned places in the boat park or harbor.

## 26 HAUL-OUT RESTRICTIONS

26.1 Boats assigned places in the harbor shall not be hauled out during the regatta, except with and according to the terms of prior written permission of the Race Committee.

## 27 DIVING EQUIPMENT AND PLASTIC POOLS

27.1 Underwater breathing apparatus and plastic pools or their equivalent shall not be used around keelboats between the preparatory signal of the first race and the end of the regatta.

## 28 RADIO COMMUNICATION

28.1 Except in an emergency or when using equipment provided by the Race Committee, a boat shall neither make nor receive radio transmissions, text messages or cellular phone calls while racing.

## **29 PRIZES**

29.1 Medals will be awarded to the top three boats in each event. Diplomas will be awarded to fourth to eight finishers in each event.

## **30 INSURANCE**

30.1 Each participating team shall present a valid insurance certificate showing proof of third-party liability coverage of at least US\$100,000 or equivalent per incident.

## **31 DISCLAIMER OF LIABILITY**

31.1 Athletes participate in the regatta entirely at their own risk, as per RRS 4, Decision to Race. The Organizing Authority will not accept any liability for material damage or personal injury or death sustained in conjunction with or prior to, during, or after the regatta.

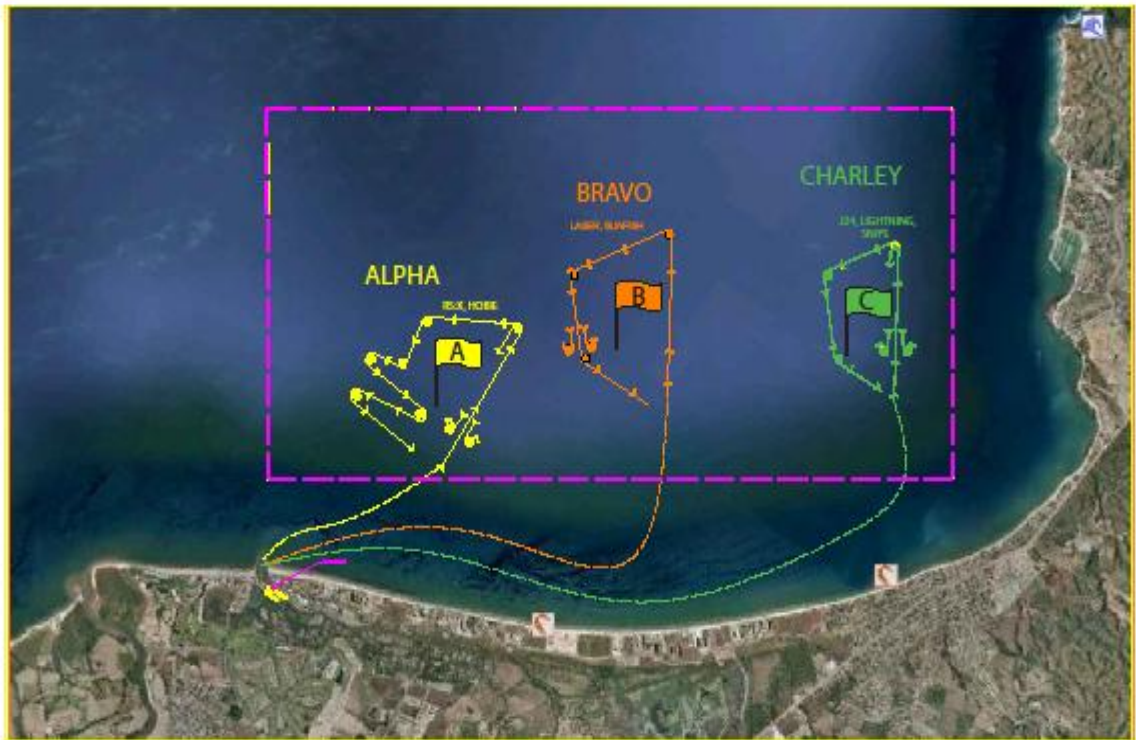
## **32 MEDIA RIGHTS**

32.1 By participating in the 2011 Pan-American Games Regatta an athlete automatically grants to the Organizing Authority and its sponsors the right in perpetuity to make, use and show, from time to time at their discretion, any motion pictures and live, taped or filmed television and other reproductions of him or her during the period of competition without compensation.

32.2 The top three competitors as well as the winners of individual races may be required to attend a media press conference each day.

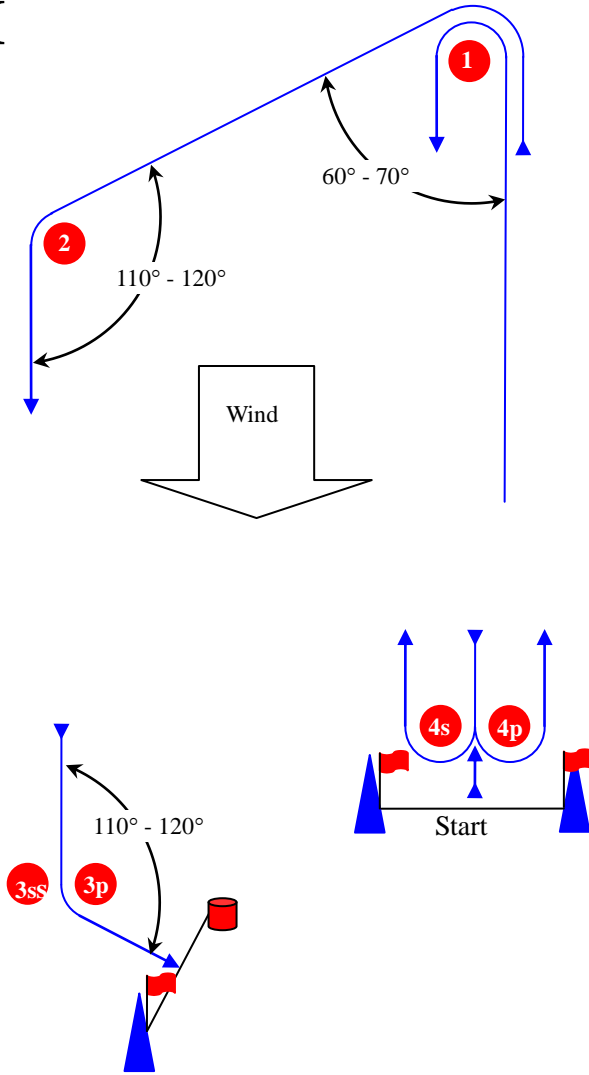
32.3 Competitors may be required for interviews at the regatta.

# Attachment A



**ATTACHMENT B, COURSE ILLUSTRATION**

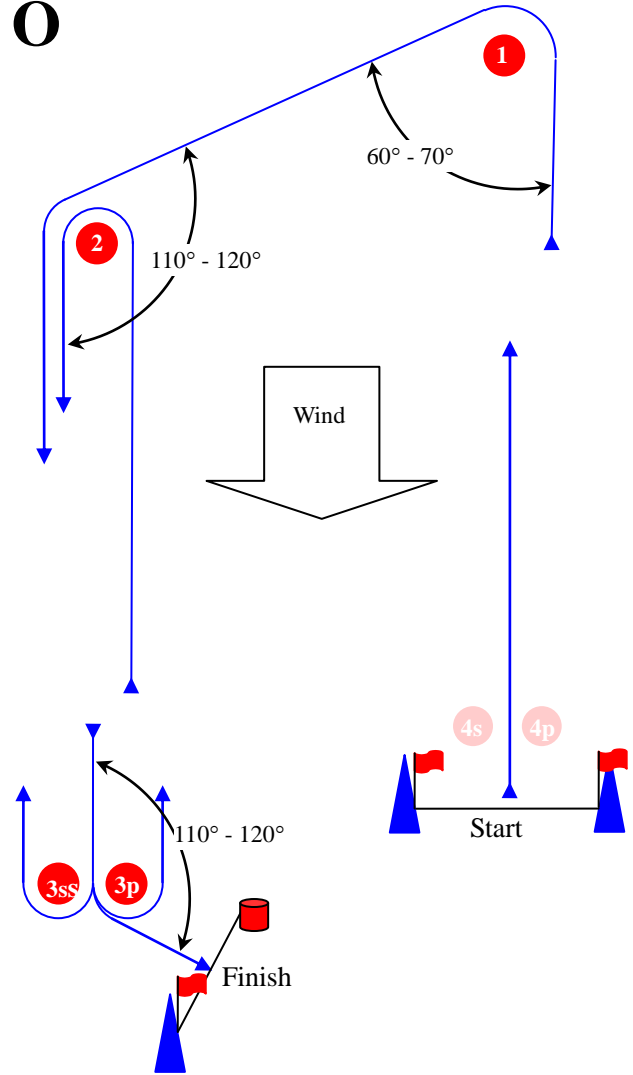
**I**



**Course: Inner Trapezoid**

Signal	Mark Rounding Order
<b>I2</b>	Start – 1 – 4s/4p – 1 – 2 – 3p – Finish
<b>I3</b>	Start – 1 – 4s/4p – 1 – 4s/4p – 1 – 2 – 3p – Finish
<b>I4</b>	Start – 1 – 4s/4p – 1 – 4s/4p – 1 – 4s/4p – 1 – 2 – 3p – Finish

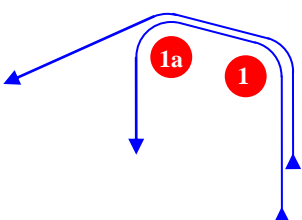
**O**



**Course: Outer Trapezoid**

Signal	Mark Rounding Order
<b>O2</b>	Start – 1 – 2 – 3s/3p – 2 – 3p – Finish
<b>O3</b>	Start – 1 – 2 – 3s/3p – 2 – 3s/3p – 2 – 3p – Finish
<b>O4</b>	Start – 1 – 2 – 3s/3p – 2 – 3s/3p – 2 – 3s/3p – 2 – 3p – Finish

**IA**

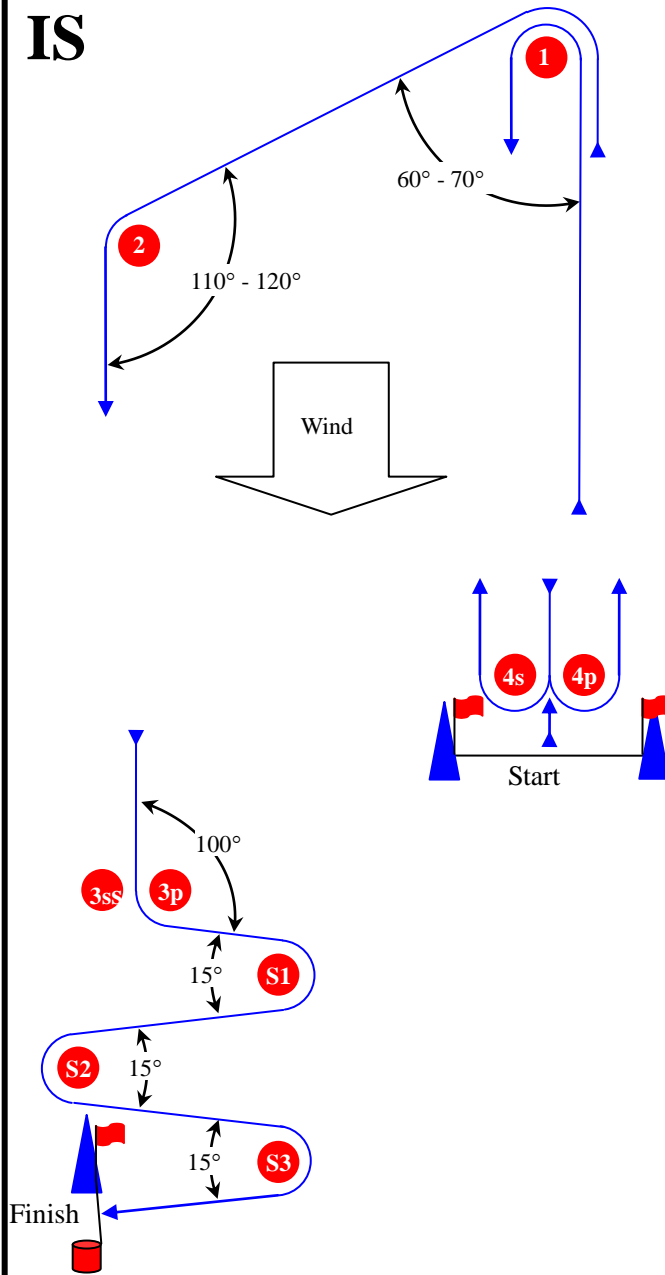


**Course: Same as course I except with offset mark 1a**

Signal	Mark Rounding Order
<b>IA2</b>	Start – 1 – 1a – 4s/4p – 1 – 1a – 2 – 3p – Finish
<b>IA3</b>	Start – 1 – 1a – 4s/4p – 1 – 1a – 4s/4p – 1 – 1a – 2 – 3p – Finish
<b>IA4</b>	Start – 1 – 1a – 4s/4p – 1 – 1a – 4s/4p – 1 – 1a – 4s/4p – 1 – 1a – 2 – 3p – Finish

**ATTACHMENT B, COURSE ILLUSTRATION**

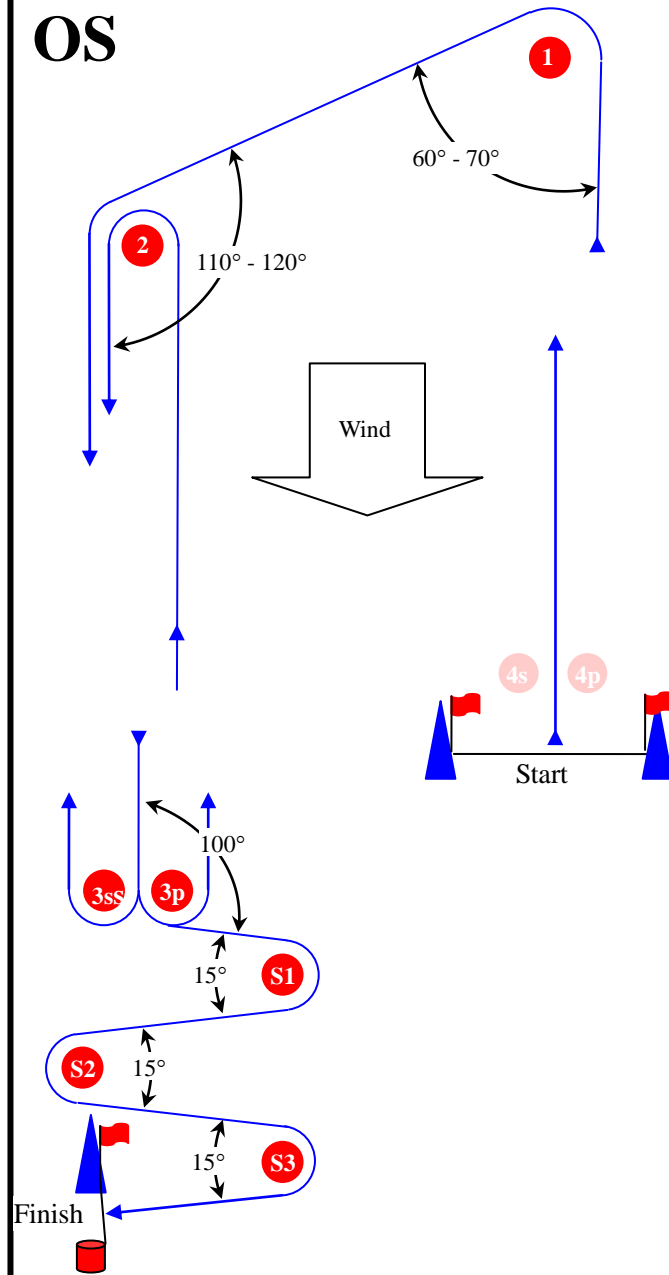
**IS**



**Course: Inner trapezoid slalom finish**

Signal	Mark Rounding Order
<b>IS2</b>	Start – 1 – 4s/4p – 1 – 2 – 3p – S1 – S2 – S3 – Finish
<b>IS3</b>	Start – 1 – 4s/4p – 1 – 4s/4p – 1 – 2 – 3p – S1 – S2 – S3 – Finish
<b>IS4</b>	Start – 1 – 4s/4p – 1 – 4s/4p – 1 – 4s/4p – 1 – 2 – 3p – S1 – S2 – S3 – Finish

**OS**

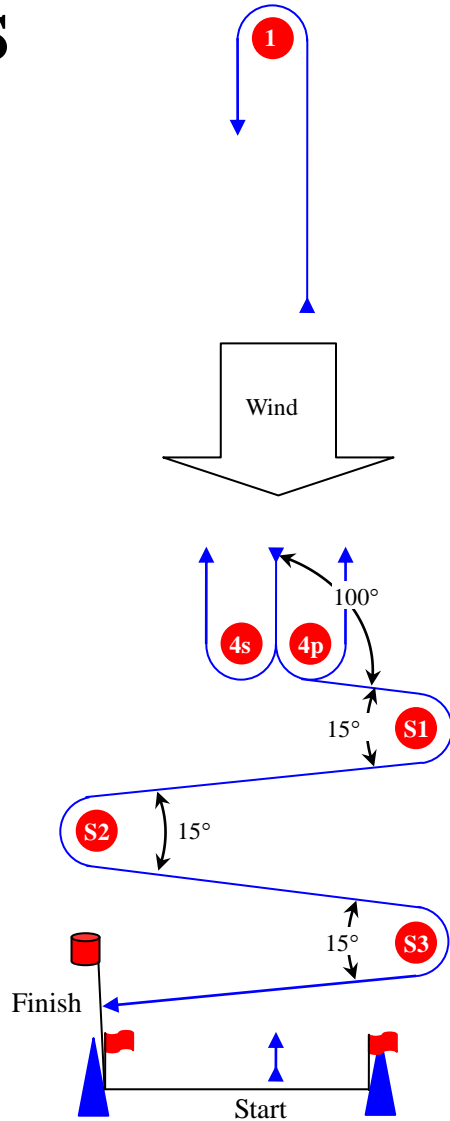


**Course: Outer trapezoid slalom finish**

Signal	Mark Rounding Order
<b>OS2</b>	Start – 1 – 2 – 3s/3p – 2 – 3p – S1 – S2 – S3 – Finish
<b>OS3</b>	Start – 1 – 2 – 3s/3p – 2 – 3s/3p – 2 – 3p – S1 – S2 – S3 – Finish
<b>OS4</b>	Start – 1 – 2 – 3s/3p – 2 – 3s/3p – 2 – 3s/3p – 2 – 3p – S1 – S2 – S3 – Finish

ATTACHMENT B, COURSE ILLUSTRATION

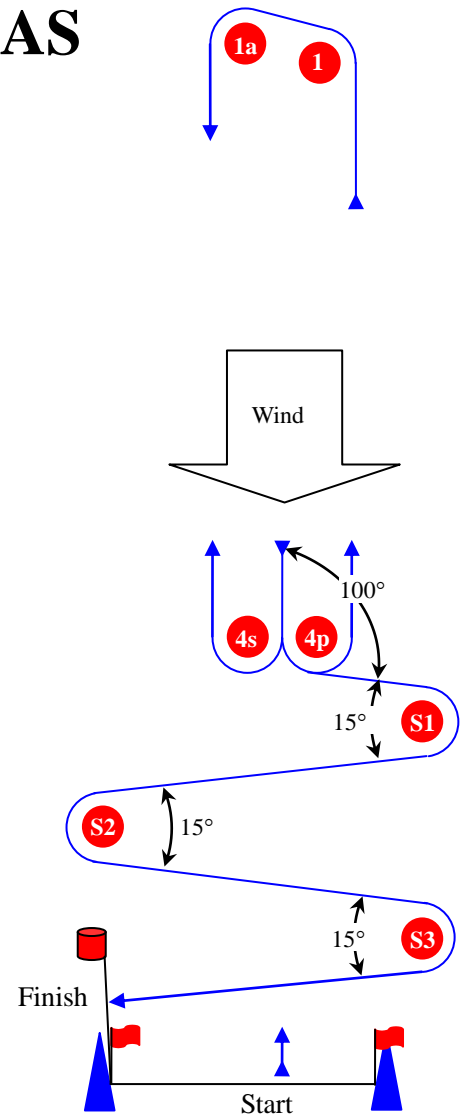
**LS**



Course: Windward Leeward slalom finish

Signal	Mark Rounding Order
<b>LS2</b>	Start - 1 - 4s/4p - 1 - S1 - S2 - S3 - Finish
<b>LS3</b>	Start - 1 - 4s/4p - 1 - 4s/4p - 1 - S1 - S2 - S3 - Finish
<b>LS4</b>	Start - 1 - 4s/4p - 1 - 4s/4p - 1 - 4s/4p - 1 - S1 - S2 - S3 - Finish

**LAS**

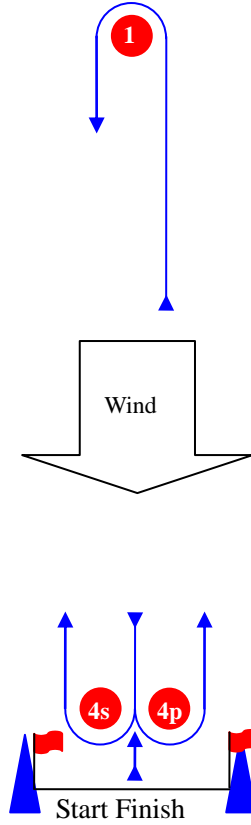


Course: Windward leeward with offset mark and slalom finish

Signal	Mark Rounding Order
<b>LAS2</b>	Start - 1 - 1a - 4s/4p - 1 - 1a - S1 - S2 - S3 - Finish
<b>LAS3</b>	Start - 1 - 1a - 4s/4p - 1 - 1a - 4s/4p - 1 - 1a - S1 - S2 - S3 - Finish
<b>LAS4</b>	Start - 1 - 4s/4p - 1 - 4s/4p - 1 - 4s/4p - 1 - S1 - S2 - S3 - Finish

**ATTACHMENT B, COURSE ILLUSTRATION**

**L**

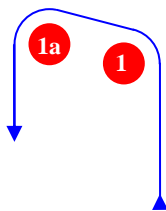


**Course: Leeward finish**

Signal	Mark Rounding Order
<b>L2</b>	Start – 1 – 4s/4p – 1 – Finish
<b>L3</b>	Start – 1 – 4s/4p – 1 – 4s/4p – 1 – Finish
<b>L4</b>	Start – 1 – 4s/4p – 1 – 4s/4p – 1 – 4s/4p – 1 – Finish

**LA**

**Course: Windward/leeward with offset mark 1a**



Signal	Mark Rounding Order
<b>LA2</b>	Start – 1 – 1a – 4s/4p – 1 – 1a – Finish
<b>LA3</b>	Start – 1 – 1a – 4s/4p – 1 – 1a – 4s/4p – 1 – 1a – Finish
<b>LA4</b>	Start – 1 – 1a – 4s/4p – 1 – 1a – 4s/4p – 1 – 1a – 4s/4p – 1 – 1a – Finish



