



Airport International Group
مجموعة المطار الدولي

QAIA Traffic Statistics Report

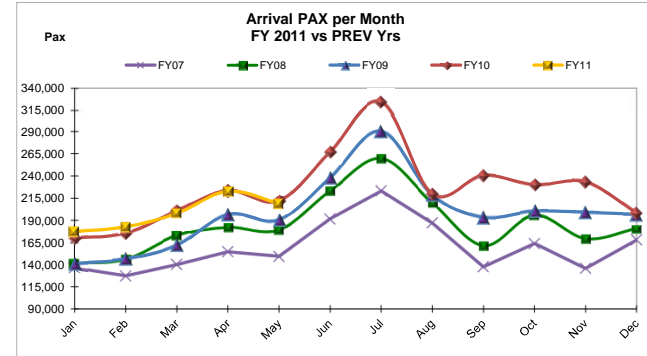
May 2011



HISTORICAL PASSENGERS (PAX)
May 31, 2011

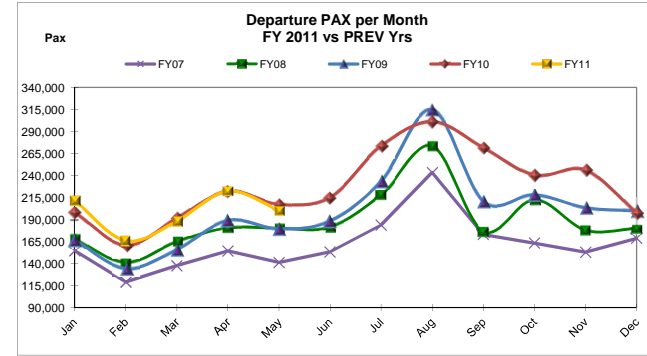
TOTAL ARRIVAL PAX

Month	FY11	FY10	Var %	FY09	Var %	FY08	Var %	FY07	Var %
Jan	177,386	170,280	4.17%	141,465	25.39%	141,893	25.01%	136,584	29.87%
Feb	182,889	175,501	4.21%	146,445	24.89%	145,788	25.45%	127,330	43.63%
Mar	197,952	200,865	-1.45%	161,812	22.33%	172,465	14.78%	140,178	41.21%
Apr	222,993	223,776	-0.35%	196,986	13.20%	182,056	22.49%	154,607	44.23%
May	208,811	211,998	-1.50%	190,696	9.50%	179,219	16.51%	149,341	39.82%
Jun		267,169	0.00%	238,065	0.00%	223,175	0.00%	191,563	0.00%
Jul		323,531	0.00%	290,910	0.00%	259,809	0.00%	223,250	0.00%
Aug		219,902	0.00%	218,876	0.00%	210,013	0.00%	187,112	0.00%
Sep		240,805	0.00%	193,841	0.00%	161,400	0.00%	137,692	0.00%
Oct		230,025	0.00%	200,516	0.00%	195,852	0.00%	163,732	0.00%
Nov		233,490	0.00%	199,302	0.00%	169,325	0.00%	135,874	0.00%
Dec		198,671	0.00%	197,050	0.00%	180,855	0.00%	167,974	0.00%
YTD May	990,031	982,420	0.77%	837,404	18.23%	821,421	20.53%	708,040	39.83%
Total	990,031	2,696,013		2,375,964		2,221,850		1,915,237	
Year-over-Year Growth		13.47%		6.94%		16.01%			



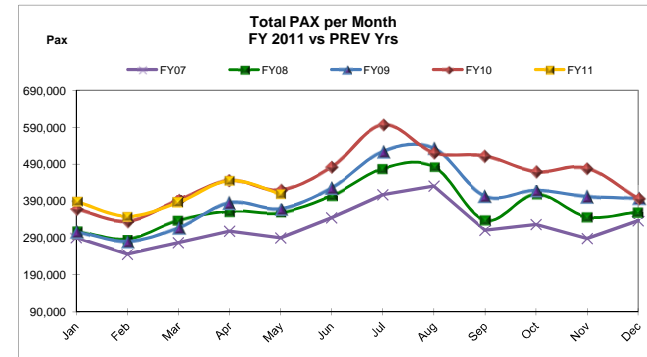
TOTAL DEPARTURE PAX

Month	FY11	FY10	Var %	FY09	Var %	FY08	Var %	FY07	Var %
Jan	211,614	198,182	6.78%	167,021	26.70%	168,038	25.93%	154,803	36.70%
Feb	165,943	161,022	3.06%	134,665	23.23%	141,376	17.38%	119,352	39.04%
Mar	188,251	191,550	-1.72%	155,989	20.68%	164,799	14.23%	137,580	36.83%
Apr	222,533	222,291	0.11%	189,009	17.74%	180,695	23.15%	154,309	44.21%
May	200,016	207,608	-3.66%	179,498	11.43%	180,216	10.99%	141,320	41.53%
Jun		215,239	0.00%	188,203	0.00%	181,706	0.00%	153,326	0.00%
Jul		273,537	0.00%	233,716	0.00%	218,293	0.00%	183,774	0.00%
Aug		301,192	0.00%	314,235	0.00%	273,545	0.00%	243,280	0.00%
Sep		271,650	0.00%	210,831	0.00%	176,597	0.00%	173,131	0.00%
Oct		240,282	0.00%	218,336	0.00%	212,812	0.00%	163,337	0.00%
Nov		246,158	0.00%	203,441	0.00%	177,992	0.00%	152,870	0.00%
Dec		197,577	0.00%	199,861	0.00%	179,892	0.00%	168,807	0.00%
YTD May	988,357	980,653	0.79%	826,182	19.63%	835,124	18.35%	707,364	39.72%
Total	988,357	2,726,288		2,394,805		2,255,961		1,945,889	
Year-over-Year Growth		13.84%		6.15%		15.93%			



TOTAL PAX COMBINED

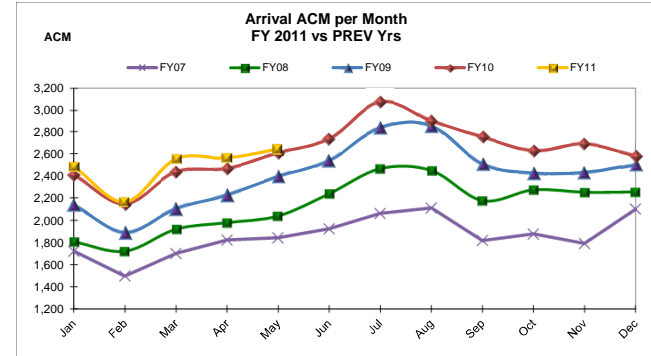
Month	FY11	FY10	Var %	FY09	Var %	FY08	Var %	FY07	Var %
Jan	389,000	368,462	5.57%	308,486	26.10%	309,931	25.51%	291,387	33.50%
Feb	348,832	336,523	3.66%	281,110	24.09%	287,164	21.47%	246,682	41.41%
Mar	386,203	392,415	-1.58%	317,801	21.52%	337,264	14.51%	277,758	39.04%
Apr	445,526	446,067	-0.12%	385,995	15.42%	362,751	22.82%	308,916	44.22%
May	408,827	419,606	-2.57%	370,194	10.44%	359,435	13.74%	290,661	40.65%
Jun		482,408	0.00%	426,268	0.00%	404,881	0.00%	344,889	0.00%
Jul		597,068	0.00%	524,626	0.00%	478,102	0.00%	407,024	0.00%
Aug		521,094	0.00%	533,111	0.00%	483,558	0.00%	430,392	0.00%
Sep		512,455	0.00%	404,672	0.00%	337,997	0.00%	310,823	0.00%
Oct		470,307	0.00%	418,852	0.00%	408,664	0.00%	327,069	0.00%
Nov		479,648	0.00%	402,743	0.00%	347,317	0.00%	288,744	0.00%
Dec		396,248	0.00%	396,911	0.00%	360,747	0.00%	336,781	0.00%
YTD May	1,978,388	1,963,073	0.78%	1,663,586	18.92%	1,656,545	19.43%	1,415,404	39.78%
Total	1,978,388	5,422,301		4,770,769		4,477,811		3,861,126	
Year-over-Year Growth		13.66%		6.54%		15.97%			



AIRCRAFT MOVEMENTS (ACM)
May 31, 2011

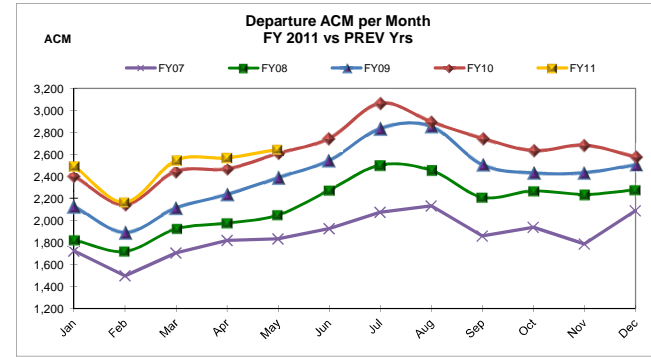
TOTAL ARRIVAL ACM

Month	FY11	FY10	Var %	FY09	Var %	FY08	Var %	FY07	Var %
Jan	2,487	2,410	3.20%	2,139	16.27%	1,807	37.63%	1,722	44.43%
Feb	2,167	2,149	0.84%	1,894	14.41%	1,721	25.92%	1,498	44.66%
Mar	2,556	2,437	4.88%	2,106	21.37%	1,920	33.13%	1,702	50.18%
Apr	2,564	2,472	3.72%	2,230	14.98%	1,979	29.56%	1,823	40.65%
May	2,645	2,611	1.30%	2,396	10.39%	2,039	29.72%	1,842	43.59%
Jun		2,736	0.00%	2,543	0.00%	2,240	0.00%	1,924	0.00%
Jul		3,068	0.00%	2,836	0.00%	2,466	0.00%	2,063	0.00%
Aug		2,899	0.00%	2,856	0.00%	2,449	0.00%	2,112	0.00%
Sep		2,753	0.00%	2,509	0.00%	2,177	0.00%	1,818	0.00%
Oct		2,628	0.00%	2,429	0.00%	2,275	0.00%	1,877	0.00%
Nov		2,690	0.00%	2,434	0.00%	2,253	0.00%	1,791	0.00%
Dec		2,582	0.00%	2,506	0.00%	2,256	0.00%	2,101	0.00%
YTD May	12,419	12,079	2.81%	10,765	15.36%	9,466	31.20%	8,587	44.63%
Total	12,419	31,435		28,878		25,582		22,273	
Year-over-Year Growth		8.85%		12.88%		14.86%			



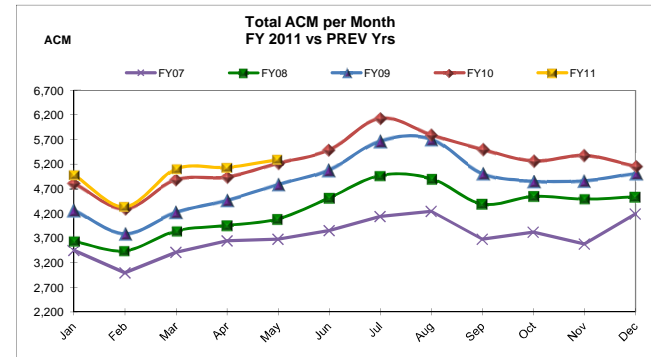
TOTAL DEPARTURE ACM

Month	FY11	FY10	Var %	FY09	Var %	FY08	Var %	FY07	Var %
Jan	2,495	2,401	3.92%	2,132	17.03%	1,825	36.71%	1,725	44.64%
Feb	2,166	2,146	0.93%	1,893	14.42%	1,720	25.93%	1,499	44.50%
Mar	2,548	2,446	4.17%	2,114	20.53%	1,924	32.43%	1,706	49.36%
Apr	2,570	2,470	4.05%	2,238	14.83%	1,977	29.99%	1,821	41.13%
May	2,648	2,610	1.46%	2,391	10.75%	2,050	29.17%	1,834	44.38%
Jun		2,747	0.00%	2,546	0.00%	2,276	0.00%	1,927	0.00%
Jul		3,066	0.00%	2,837	0.00%	2,504	0.00%	2,076	0.00%
Aug		2,896	0.00%	2,856	0.00%	2,456	0.00%	2,133	0.00%
Sep		2,748	0.00%	2,506	0.00%	2,213	0.00%	1,860	0.00%
Oct		2,635	0.00%	2,432	0.00%	2,270	0.00%	1,940	0.00%
Nov		2,686	0.00%	2,434	0.00%	2,237	0.00%	1,788	0.00%
Dec		2,577	0.00%	2,509	0.00%	2,280	0.00%	2,090	0.00%
YTD May	12,427	12,073	2.93%	10,768	15.41%	9,496	30.87%	8,585	44.75%
Total	12,427	31,428		28,888		25,732		22,399	
Year-over-Year Growth		8.79%		12.26%		14.88%			



TOTAL ACM COMBINED

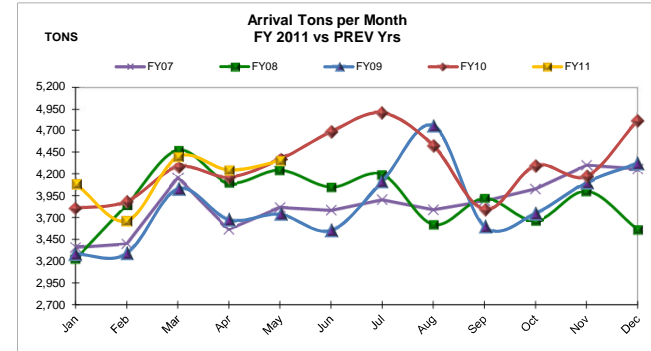
Month	FY11	FY10	Var %	FY09	Var %	FY08	Var %	FY07	Var %
Jan	4,982	4,811	3.55%	4,271	16.65%	3,632	37.17%	3,447	44.53%
Feb	4,333	4,295	0.88%	3,787	14.42%	3,441	25.92%	2,997	44.58%
Mar	5,104	4,883	4.53%	4,220	20.95%	3,844	32.78%	3,408	49.77%
Apr	5,134	4,942	3.89%	4,468	14.91%	3,956	29.78%	3,644	40.89%
May	5,293	5,221	1.38%	4,787	10.57%	4,089	29.44%	3,676	43.99%
Jun		5,483	0.00%	5,089	0.00%	4,516	0.00%	3,851	0.00%
Jul		6,134	0.00%	5,673	0.00%	4,970	0.00%	4,139	0.00%
Aug		5,795	0.00%	5,712	0.00%	4,905	0.00%	4,245	0.00%
Sep		5,501	0.00%	5,015	0.00%	4,390	0.00%	3,678	0.00%
Oct		5,263	0.00%	4,861	0.00%	4,545	0.00%	3,817	0.00%
Nov		5,376	0.00%	4,868	0.00%	4,490	0.00%	3,579	0.00%
Dec		5,159	0.00%	5,015	0.00%	4,536	0.00%	4,191	0.00%
YTD May	24,846	24,152	2.87%	21,533	15.39%	18,962	31.03%	17,172	44.69%
Total	24,846	62,863		57,766		51,314		44,672	
Year-over-Year Growth		8.82%		12.57%		14.87%			



CARGO (TONS) May 31, 2011

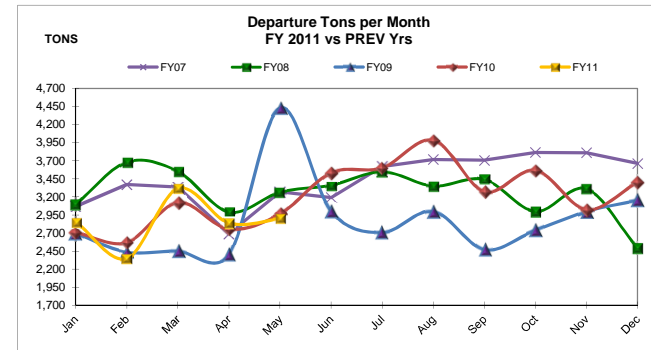
CARGO (TONS) ARRIVAL

Month	FY11	FY10	Var. %	FY09	Var. %	FY08	Var. %	FY07	Var. %
Jan	4,089	3,809	7.37%	3,285	24.49%	3,227	26.70%	3,356	21.84%
Feb	3,665	3,890	-5.77%	3,293	11.33%	3,847	-4.71%	3,396	7.93%
Mar	4,398	4,282	2.71%	4,033	9.06%	4,471	-1.62%	4,156	5.82%
Apr	4,248	4,168	1.92%	3,681	15.41%	4,100	3.61%	3,565	19.16%
May	4,352	4,370	-0.41%	3,739	16.41%	4,242	2.60%	3,813	14.16%
Jun		4,686	0.00%	3,557	0.00%	4,048	0.00%	3,783	0.00%
Jul		4,902	0.00%	4,118	0.00%	4,192	0.00%	3,904	0.00%
Aug		4,528	0.00%	4,757	0.00%	3,619	0.00%	3,787	0.00%
Sep		3,792	0.00%	3,605	0.00%	3,919	0.00%	3,887	0.00%
Oct		4,300	0.00%	3,752	0.00%	3,664	0.00%	4,025	0.00%
Nov		4,178	0.00%	4,108	0.00%	4,002	0.00%	4,299	0.00%
Dec		4,814	0.00%	4,324	0.00%	3,562	0.00%	4,257	0.00%
YTD May	20,754	20,520	1.14%	18,030	15.11%	19,887	4.36%	18,286	13.49%
Total	20,754	51,720		46,250		46,893		46,228	
Y-o-Y Growth		11.83%		-1.37%		1.44%			



CARGO (TONS) DEPARTURE

Month	FY11	FY10	Var. %	FY09	Var. %	FY08	Var. %	FY07	Var. %
Jan	2,851	2,706	5.34%	2,695	5.77%	3,093	-7.82%	3,067	-7.04%
Feb	2,349	2,569	-8.56%	2,436	-3.59%	3,680	-36.17%	3,369	-30.28%
Mar	3,315	3,122	6.21%	2,451	35.29%	3,551	-6.62%	3,334	-0.55%
Apr	2,838	2,753	3.06%	2,400	18.23%	2,989	-5.06%	2,688	5.56%
May	2,900	2,963	-2.15%	4,427	-34.51%	3,265	-11.19%	3,269	-11.30%
Jun		3,533	0.00%	3,005	0.00%	3,360	0.00%	3,192	0.00%
Jul		3,600	0.00%	2,707	0.00%	3,546	0.00%	3,621	0.00%
Aug		3,985	0.00%	3,002	0.00%	3,350	0.00%	3,716	0.00%
Sep		3,273	0.00%	2,469	0.00%	3,438	0.00%	3,706	0.00%
Oct		3,568	0.00%	2,737	0.00%	2,997	0.00%	3,815	0.00%
Nov		3,024	0.00%	2,998	0.00%	3,309	0.00%	3,809	0.00%
Dec		3,400	0.00%	3,150	0.00%	2,491	0.00%	3,662	0.00%
YTD May	14,252	14,114	0.98%	14,410	-1.09%	16,577	-14.02%	15,727	-9.37%
Total	14,252	38,496		34,477		39,069		41,247	
Y-o-Y Growth		11.66%		-11.75%		-5.28%			



TOTAL CARGO (TONS) COMBINED

Month	FY11	FY10	Var. %	FY09	Var. %	FY08	Var. %	FY07	Var. %
Jan	6,940	6,515	6.52%	5,980	16.05%	6,320	9.81%	6,423	8.05%
Feb	6,014	6,459	-6.88%	5,729	4.98%	7,526	-20.09%	6,765	-11.10%
Mar	7,714	7,404	4.18%	6,483	18.98%	8,021	-3.83%	7,490	2.99%
Apr	7,086	6,921	2.37%	6,081	16.53%	7,089	-0.05%	6,253	13.31%
May	7,252	7,334	-1.11%	8,166	-11.20%	7,507	-3.39%	7,082	2.41%
Jun		8,219	0.00%	6,562	0.00%	7,408	0.00%	6,974	0.00%
Jul		8,502	0.00%	6,825	0.00%	7,738	0.00%	7,525	0.00%
Aug		8,513	0.00%	7,759	0.00%	6,969	0.00%	7,504	0.00%
Sep		7,065	0.00%	6,074	0.00%	7,357	0.00%	7,592	0.00%
Oct		7,867	0.00%	6,489	0.00%	6,661	0.00%	7,840	0.00%
Nov		7,203	0.00%	7,106	0.00%	7,312	0.00%	8,108	0.00%
Dec		8,213	0.00%	7,474	0.00%	6,053	0.00%	7,919	0.00%
YTD May	35,006	34,633	1.08%	32,440	7.91%	36,464	-4.00%	34,013	2.92%
Total	35,006	90,216		80,727		85,962		87,475	
Y-o-Y Growth		11.75%		-6.09%		-1.73%			

