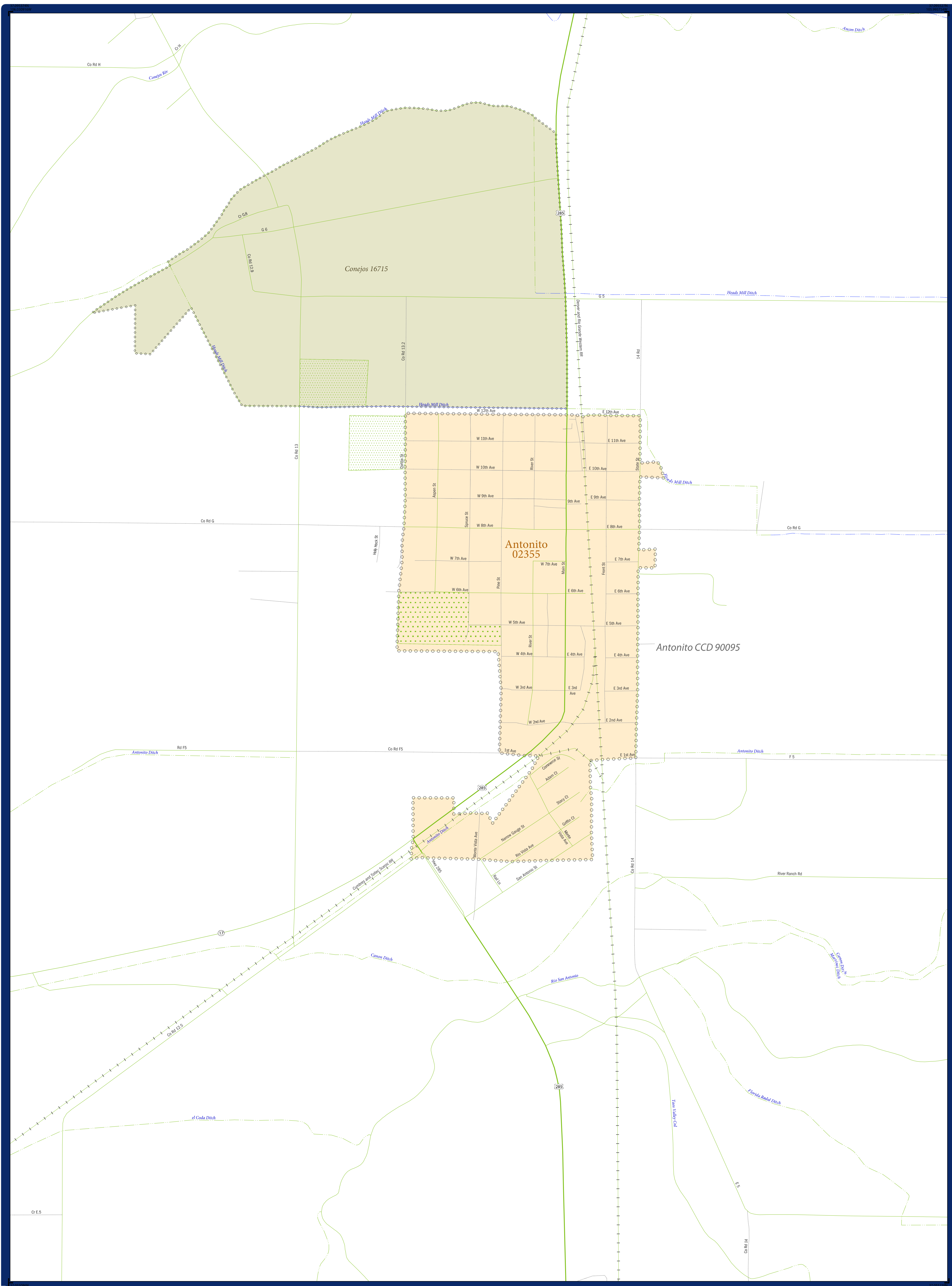


# 2011 BOUNDARY AND ANNEXATION SURVEY (BAS): Conejos County, CO (2080210000)



### 2011 BAS MAP LEGEND

SYMBOL DESCRIPTION	SYMBOL	LABEL STYLE
Federal American Indian Reservation	*****	L'ANSE RESERVATION (TA 1880)
Off-Reservation Trust Land	+++++	T1880
American Indian Tribal Subdivision	.....	SHONTO (620)
Alaska Native Regional Corporation	▼▼▼▼▼	NANA ANRC 52120
American Indian Area (Hill)	.....	
State (or statistically equivalent entity)		NEW YORK 36
County (or statistically equivalent entity)		ERIE 029
Minor Civil Division (MCD) <sup>1</sup>	.....	Lee town 41460
Census County Division (CCD) <sup>2</sup>	.....	Jemez CCD 91650
Consolidated City	.....	MILFORD 47500
Incorporated Place <sup>3</sup>	.....	Davis 18100
Census Designated Place (CDP) <sup>4</sup>	.....	Cochiti 16560

DESCRIPTION	SYMBOL	DESCRIPTION	SYMBOL
Interstate	— — —	Geographic Other and Corridor	— — —
U.S. Highway	— — —	Water Body	— — —
State Highway	— — —	Swamp or Marsh	— — —
Other Road	— — —	Airport	— — —
Cal-de-sac	— — —	Cemetery	— — —
Circle	— — —	Golf Course	— — —
Address Range Break <sup>4</sup>	— — —	Military	— — —
OTW Trail, Staircase, Alley, Walkway, or Ferry	— — —	National Park or Forest	— — —
Railroad	— — —	Other Park	— — —
Pipeline or Power Line	— — —	Nonvisible Boundary or Feature Not Elsewhere Classified	— — —
Ridge or Fence	— — —	Perennial Stream	— — —
Property Line	— — —	Intermittent Stream	— — —

Where state, county, and/or MCD/CCD boundaries coincide, the map shows the boundary symbol for only the highest-ranking of these boundaries. Where American Indian reservation and American Indian tribal subdivision boundaries coincide, the map shows only the American Indian reservation boundaries.

<sup>1</sup> "MCD" indicates a false MCD. These are for Census use only.  
<sup>2</sup> The CCD and CDP boundaries represent statistical entities only. They are not to be updated through the BAS.  
<sup>3</sup> Incorporated place name color correlates to the incorporated place fill color.  
<sup>4</sup> Address range break values represent the last address stored in the MAF/TIGER database for each street that crosses the boundary of your jurisdiction.

Due to space limitations, some road names, along with other feature and geography names on the map, may not be shown.  
 The Census Bureau stores primary and alternate road names, but only primary road names are used to label the roads on the BAS maps.  
 The Census Bureau is working to improve our road data to address inconsistencies in road classification and their resulting symbolization seen on the BAS maps.

### SIGNATURE BOX

The corrected boundaries shown on the map are accurate as of January 1, 2011.

Print Name: \_\_\_\_\_

Position: \_\_\_\_\_

Signature: \_\_\_\_\_

Telephone: \_\_\_\_\_ Date: \_\_\_\_\_

### For Census Use Only

#### NPC COUNTY PROCESSING SHEET CHANGES

State Code: \_\_\_\_\_ County Code: \_\_\_\_\_

Boundary Change: N B F A J (circle)

Late BAS: Y N A/L P/L

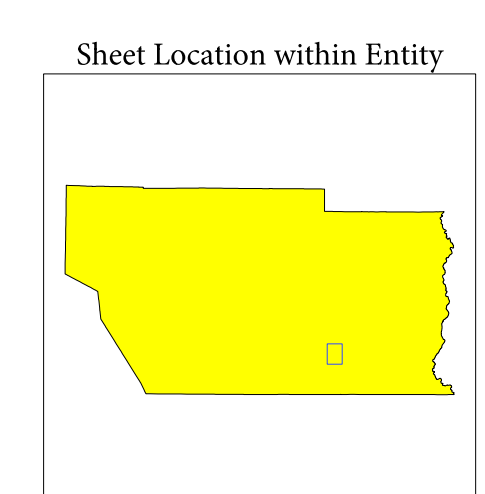
Other Entity Affected / Type of Change (circle)

\_\_\_\_\_ B F A L J

\_\_\_\_\_ B F A L J

\_\_\_\_\_ B F A L J

\_\_\_\_\_ B F A L J



Sheet B1 of 2 INSET sheets  
 Total Sheets: 26 (Index 1; Parent 23; Inset 2)

NAME: Conejos County (021)  
 ENTITY TYPE: County or statistically equivalent entity  
 ST: Colorado (08)

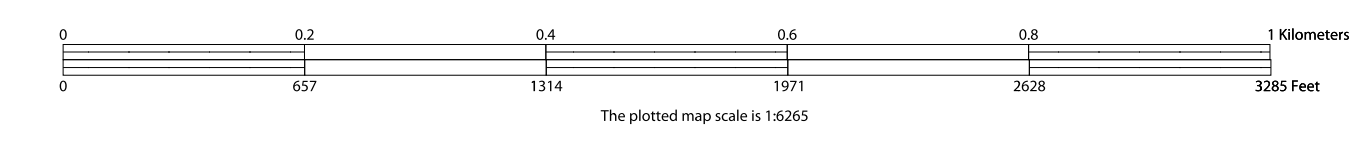
INDEX OR PARENT SHEET #: 017  
 INSET SHEET #: 006601

2011 BAS COUNTY MAP (INSET)

43702080210000017006601

All legal boundaries and names reported through the 2010 BAS. The boundaries shown on this map are for Census Bureau statistical data collection and tabulation purposes only; their depiction and designation for statistical purposes does not constitute a determination of jurisdictional authority or rights of ownership or entitlement.  
 Source: U.S. Census Bureau's MAF/TIGER database (TAB10)  
 Created by Geography Division: December 05, 2010  
 U.S. DEPARTMENT OF COMMERCE Economics and Statistics Administration U.S. Census Bureau

Projection: Albers Equal Area Conic  
 Datum: NAD83  
 Spheroid: GRS 80  
 1st Standard Parallel: 37 39 41  
 2nd Standard Parallel: 40 20 05  
 Central Meridian: -105 32 44  
 Latitude of Projection's Origin: 36 59 35  
 False Easting: 0  
 False Northing: 0



USCENSUSBUREAU

**BAS Submission Deadline: March 1, 2011**  
 PDF versions of the BAS maps are now available at:  
[www.census.gov/geo/www/bas/bashome.html](http://www.census.gov/geo/www/bas/bashome.html)  
 For more information, or to request additional maps, please email geo.bas@census.gov, call 1-800-972-5651, or visit www.census.gov/geo/www/bas/bashome.html.